

Two new genera and eight new species of jumping spiders (Araneae, Salticidae) from Xishuangbanna, Yunnan, China

Yejie Lin¹, Shuqiang Li²

1 Hebei Key Laboratory of Animal Diversity, College of Life Science, Langfang Normal University, Langfang 065000, China **2** Institute of Zoology, Chinese Academy of Sciences, Beijing 100101, China

Corresponding author: Shuqiang Li (lisq@ioz.ac.cn)

Academic editor: G. Blagoev | Received 8 March 2020 | Accepted 11 May 2020 | Published 23 July 2020

<http://zoobank.org/B06E0C6B-6A96-4AEA-8BE1-D121929504FD>

Citation: Lin Y, Li S (2020) Two new genera and eight new species of jumping spiders (Araneae, Salticidae) from Xishuangbanna, Yunnan, China. ZooKeys 952: 95–128. <https://doi.org/10.3897/zookeys.952.51849>

Abstract

Two new genera and eight new species of jumping spiders from Xishuangbanna Tropical Botanical Garden (XTBG) are diagnosed, described, and illustrated. The new genera are *Dendroicius* **gen. nov.** (type species *D. hotaruae* **sp. nov.** (♂♀)) and *Mega eupoa* **gen. nov.** (type species *M. yanfengi* **sp. nov.** (♂♀)). The new species are *Colyttus yiwui* **sp. nov.** (♂♀), *Euophrys xuyei* **sp. nov.** (♂♀), *Foliabitus weihangi* **sp. nov.** (♂♀), *Nigorella mengla* **sp. nov.** (♂♀), *Onomastus chenae* **sp. nov.** (♂♀), and *Synagelides platnicki* **sp. nov.** (♂♀). A new combination is proposed: *Mega eupoa gravehii* (Caleb, 2018), **comb. nov.**, ex *Brettus* Thorell, 1895. Two new synonyms have been proposed: *Irura prima* (Žabka, 1985), **syn. nov.** with *Irura mandarina* Simon, 1903; *Evarcha digitata* Peng & Li, 2002, **syn. nov.** with *Ptocasius montiformis* Song, 1991.

Keywords

All Species Inventory, taxonomy, tropical rainforest, XTBG

Introduction

Salticidae Blackwall, 1841, or jumping spiders, is the largest spider family, with 6183 species in 646 genera worldwide (WSC 2020). Of the 5078 species of spiders described from China, 526 are jumping spiders (Li 2020a). This paper describes two new genera and eight new species of jumping spiders from Xishuangbanna Tropical Botanical Garden (XTBG), Yunnan, southwestern China.

Xishuangbanna Tropical Botanical Garden is located on Hulu Island in Menglun Township, Mengla County. XTBG is separated from the mainland by the Luosuo River, a tributary of the Mekong River (known as the Lancang River in China). XTBG's 11.25 square kilometers includes a 2.50 square kilometer patch of well-preserved primary tropical rainforest, the main research area of our "All Species Inventory" on XTBG spiders for the past 20 years.

Until now, the Xishuangbanna spider checklist included 782 species in 46 families (Li 2020a). The species diversity from XTBG is greater than the number of species found in thoroughly studied regions, such as the United Kingdom, Norway, and Denmark (Nentwig et al. 2020). From our long-term study, we expect to find more spider species from XTBG.

Materials and methods

Specimens were collected by fogging in XTBG. All specimens were preserved in 100% ethanol. Epigynes were cleared in trypsin enzyme solution to dissolve non-chitinous tissues. Specimens were examined under a LEICA M205C stereomicroscope. Photomicroscope images were taken with an Olympus C7070 zoom digital camera (7.1 megapixels). Photos were stacked with Helicon Focus (version 6.7.1) or Zerene Stacker (version 1.04) and processed in Adobe Photoshop CC 2018. All measurements are in millimeters. Eye sizes are measured as the maximum diameter from either the dorsal or frontal view. Leg measurements are given as follows: total length (femur, patella+tibia, metatarsus, tarsus); however, in *Synagelides platnicki* sp. nov., because of the long patella, we use (femur, patella, tibia, metatarsus, tarsus). All specimens are deposited in the Institute of Zoology, Chinese Academy of Sciences (IZCAS) in Beijing, China.

Abbreviations used in the text and figures:

AER	anterior eye row	C	conductor
AERW	anterior eye row width	CD	copulatory duct
AG	accessory gland	CO	copulatory opening
AL	abdomen length	Cy	cymbium
ALE	anterior lateral eye	dEA	dorsal embolic apophysis
AME	anterior median eye	DH	distal hematodocha
AW	abdomen width	DTA	dorsal tibial apophysis
BH	basal hematodocha	E	embolus

EFL	eye field length	PME	posterior median eye
EO	embolic opening	PS	primary spermathecae
ED	embolic disc	PTA	posterior terminal apophysis
EP	embolic part	RSDL	retrolateral sperm duct loop
ES	embolic sheath	RTA	retrolateral tibial apophysis
FD	fertilization duct	rMA	retrolateral median apophysis
iTA	inferior terminal apophysis	S	spermathecae
LE	lamella of embolus	SP	spur on mesal branch of conductor
ITA	lateral terminal apophysis	Sp	spine
M	membrane	SD	sperm duct
MA	median apophysis	SS	secondary spermathecae
mDTA	mesal branch of DTA	ST	subtegulum
MH	median hematodocha	T	tegulum
MS	median septum	TA	terminal apophysis
MTP	membranous tegular peak	TL	tegular lobe
PA	patellar apophysis	TS	tegular sclerite
PER	posterior eye row	VTB	ventral tibial bump
PERW	posterior eye row width	W	window
PLE	posterior lateral eye		

Taxonomy

Family Salticidae Blackwall, 1841

Genus *Colyttus* Thorell, 1891

Type species. *Colyttus bilineatus* Thorell, 1891.

Colyttus yiwui sp. nov.

<http://zoobank.org/022B0848-4F66-4B45-83D1-17E9AFDD2316>

Figures 1, 2

Type material. *Holotype* ♂ (IZCAS-Ar40379), CHINA: Yunnan: Xishuangbanna, Mengla County, Menglun Township, XTBG, Leprosy Village, 21.8932N, 101.2883E, elevation ca 550 m, 27.IX.2017, Zhigang Chen leg. *Paratypes* 7♂3♀ (IZCAS-Ar40380–Ar40389), same data as holotype.

Etymology. This species is named after Mr. Yiwu Zhu, who has helped us greatly with this research; noun (name) in genitive case.

Diagnosis. The males of *Colyttus yiwui* sp. nov. are similar to *C. proszynskii* Caleb, Chatterjee, Tyagi, Kundu & Kumar, 2018 by having a similarly-shaped embolus. However, *C. zhui* sp. nov. can be distinguished by the well-developed tegular lobe (vs. less well-developed in *C. proszynskii*), the ratio of the length of the embolus to the width

of the embolic disc 1:1 (vs. 2:1 in *C. prozysniskii*), the curved embolic tip (vs. straight in *C. prozysniskii*) and the blunt lamella of the embolus (vs. pointed in *C. prozysniskii*).

Description. Male (Figs 1, 2C, E, G). Total length 6.76. Carapace 3.36 long, 2.72 wide. Abdomen 3.40 long, 1.85 wide. Clypeus 0.05 high. Eye sizes and inter-distances: AME 0.67, ALE 0.45, PLE 0.43, AERW 2.21, PERW 2.12, EFL 1.44. Legs: I 6.93 (2.45 + 2.66 + 1.22 + 0.60), II 5.55 (1.63 + 2.15 + 1.22 + 0.55), III 5.81 (1.80 + 1.95 + 1.46 + 0.60), IV 6.04 (1.90 + 2.05 + 1.49 + 0.60). Carapace yellow-brown with black edge, eye region dark brown, with black rings around eyes. Fovea longitudinal, situated between PLEs. Clypeus black, covered with white setae. Chelicerae dark brown with two promarginal teeth and one retromarginal fissident tooth with two cusps. Endites, labium and sternum brown. Leg I black, other legs pale yellow except femora with black pattern. Abdomen elongated oval, dorsum with two pairs of muscle depressions medially, irregular yellow stripe across entire surface and bifurcated posteriorly, covered with brown setae and sparse, long setae; venter brown. Spinnerets brown.

Palp (Fig. 1A–C): Tibia stocky, slightly wider than long, with relatively long RTA; cymbium longer than wide; bulb approximately as long as wide; lamella of embolus blunt, embolus long, connected to embolic disc, embolic tip curved.

Female (Fig. 2A, B, D, F, H). Total length 4.82. Carapace 2.04 long, 1.63 wide. Abdomen 2.78 long, 1.61 wide. Clypeus 0.12 high. Eye sizes and inter-distances: AME

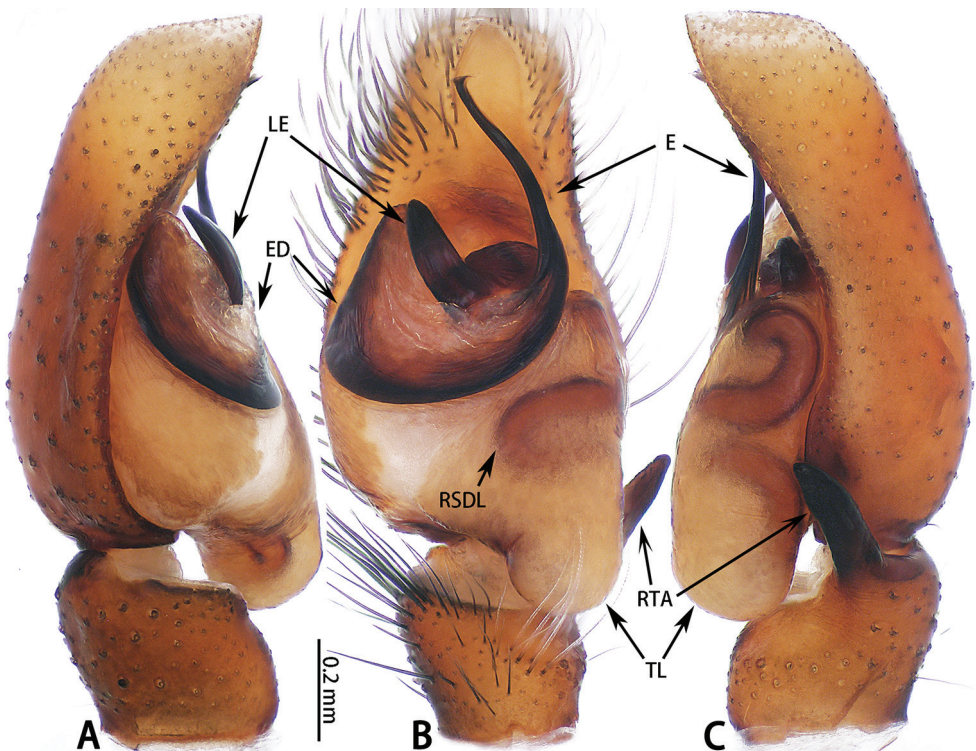


Figure 1. Palp of *Colyttus yiwui* sp. nov., male holotype. **A** prolateral **B** ventral **C** retrolateral.

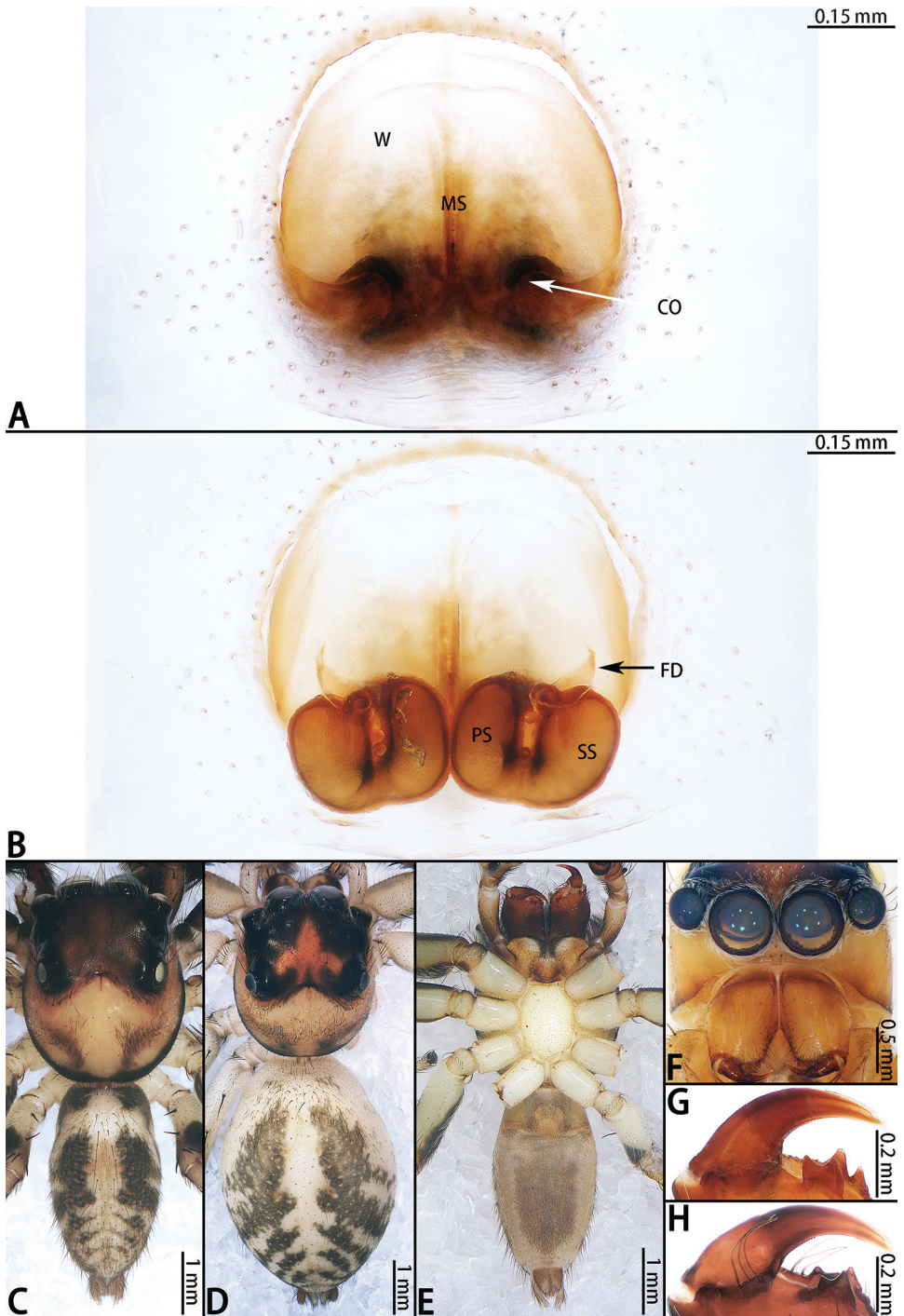


Figure 2. *Colyttus yiwui* sp. nov., female paratype and male holotype. **A** epigyne, ventral **B** vulva, dorsal **C** male holotype habitus, dorsal **D** female paratype habitus, dorsal **E** holotype habitus, ventral **F** frontal view of female paratype. **G** dorsal view of chelicerae, male holotype **H** dorsal view of chelicerae, female paratype.

0.47, ALE 0.28, PLE 0.27, AERW 2.38, PERW 2.28, EFL 1.69. Legs: I 6.16 (1.96 + 2.43 + 1.16 + 0.61), II 5.00 (1.53 + 1.96 + 1.01 + 0.50), III 5.10 (1.59 + 1.66 + 1.31 + 0.54), IV 5.71 (1.66 + 1.98 + 1.53 + 0.54). Habitus similar to that of male except paler.

Epigyne (Fig. 2A, B) as long as wide, windows large, separated by median septum; copulatory openings on each side of septum located posteriorly; copulatory ducts indistinct, primary spermathecae smaller than secondary spermathecae, overall U-shaped; fertilization ducts originating from the anterior entolateral edge of secondary spermathecae, extending almost transversely.

Distribution. Known only from the type locality in Yunnan, China.

Genus *Dendroicius* gen. nov.

<http://zoobank.org/91408531-896D-4729-8C90-AFA460B25E09>

Type species. *Dendroicius hotaruuae* sp. nov.

Etymology. The generic name is a combination of the word “*Dendro*”, referring to the habitat of the genus, and the generic name *Icius* Simon, 1876. The gender is masculine.

Diagnosis. *Dendroicius* gen. nov. can be easily distinguished from *Icius* by the following characters: the male without a stridulatory apparatus; palpal tibia with a dorsal apophysis, dorsal embolic apophysis of bulb near the tegular sclerite; epigyne with a large hood posteriorly, posterior to copulatory opening, copulatory opening circular, depression around copulatory opening, spermathecae posterior to copulatory opening, copulatory ducts curved, fertilization ducts folded 90°, well-developed.

Composition. The new genus currently includes only one species: *Dendroicius hotaruuae* sp. nov.

***Dendroicius hotaruuae* sp. nov.**

<http://zoobank.org/72556AE0-B460-402A-99B9-BA4795328B5E>

Figures 3, 4

Type material. *Holotype* ♂ (IZCAS-Ar40390), CHINA: Yunnan: Xishuangbanna, Mengla County, Menglun Township, XTBG, Leprosy Village, 21.8986N, 101.2683E, elevation ca 550 m, 27.IX.2017, Zilong Bai leg. *Paratypes* 1♂4♀ (IZCAS-Ar40391–Ar40395), same data as holotype.

Etymology. The species is named after Ms. Hotaru Amamiya, who helped us greatly with this research; noun (name) in genitive case.

Diagnosis. Same as for the genus.

Description. Male (Figs 3, 4C, D, G). Total length 3.24. Carapace 1.58 long, 1.03 wide. Abdomen 1.88 long, 1.03 wide. Clypeus 0.03 high. Eye sizes and inter-distances: AME 0.32, ALE 0.16, PLE 0.16, AERW 0.85, PERW 0.94, EFL 0.56. Legs: I 2.54 (0.82 + 1.09 + 0.33 + 0.30), II 1.89 (0.59 + 0.71 + 0.36 + 0.23), III 1.86 (0.57 + 0.61 + 0.41 + 0.27), IV 2.46 (0.77 + 0.90 + 0.48 + 0.31). Carapace dark brown,

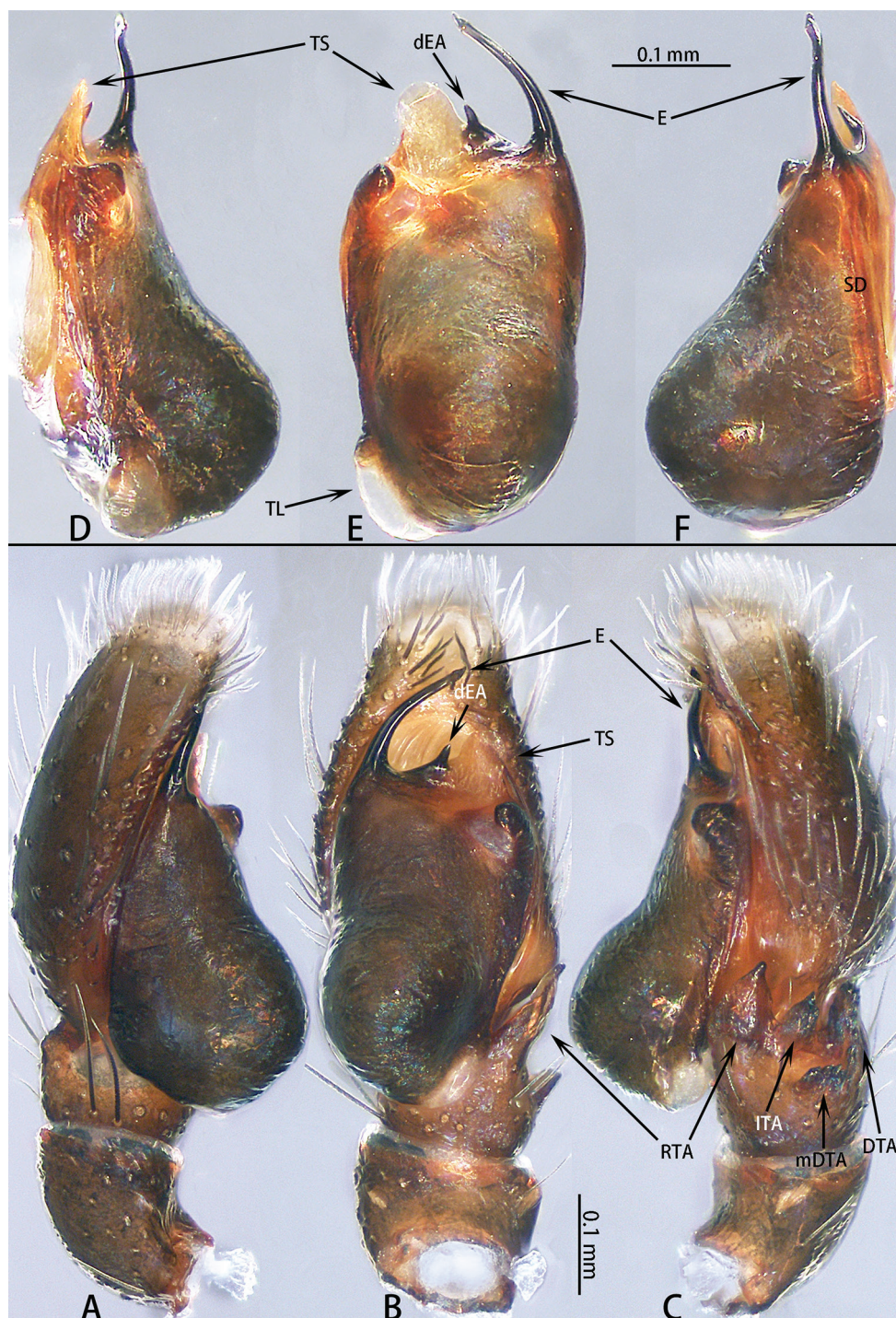


Figure 3. Male palp of *Dendroicius hotaruuae* sp. nov. **A–C** holotype, left palp; **D, E** paratype, right palp. **A** prolateral **B** ventral **C** retrolateral **D** bulb, retrolateral **E** same, ventral **F** same prolateral.

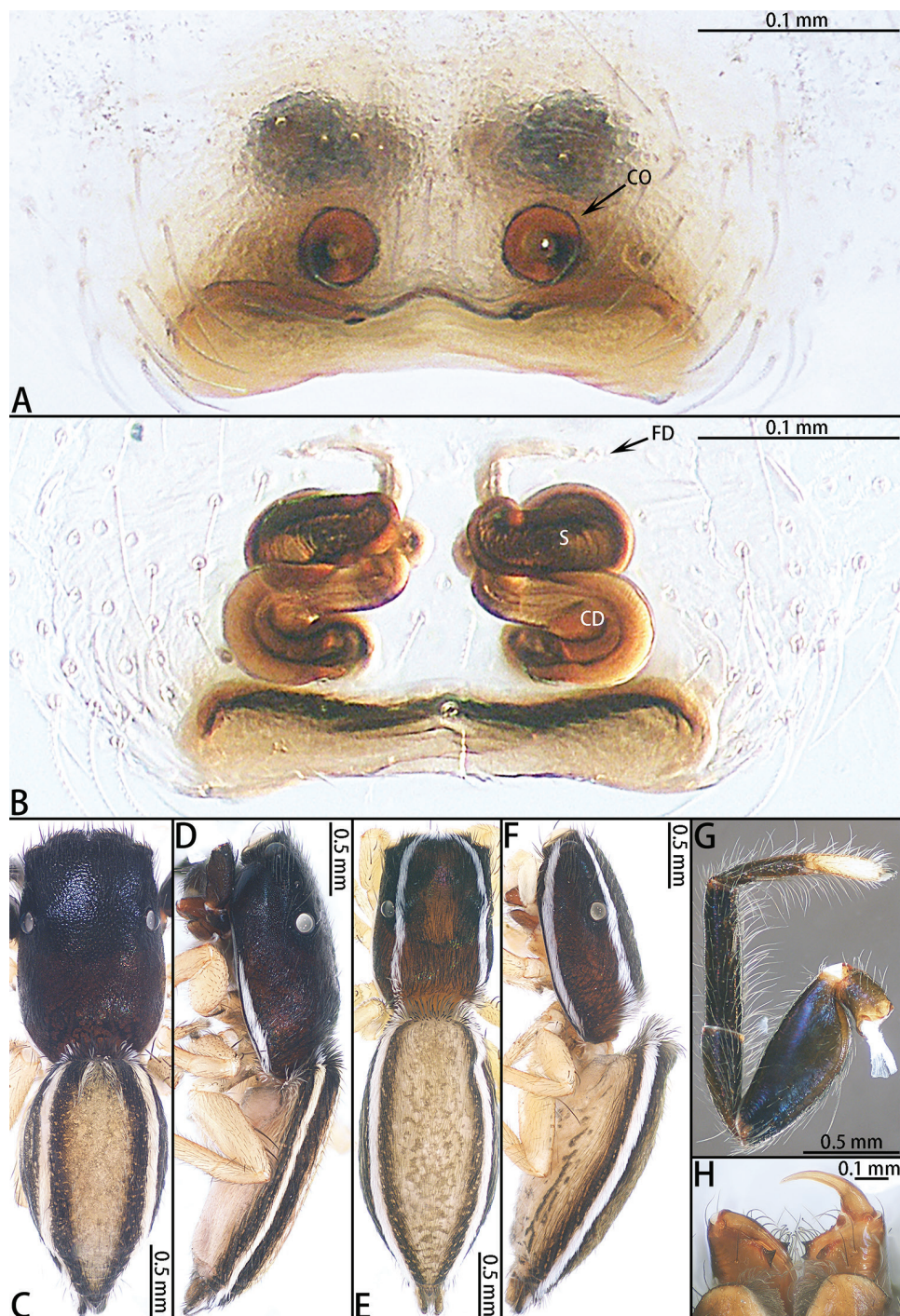


Figure 4. *Dendroicius hotaruae* sp. nov., female paratype and male holotype. **A** epigyne, ventral **B** vulva, dorsal **C** male holotype habitus, dorsal **D** same, lateral **E** female paratype habitus, dorsal **F** same, lateral **G** prolateral view of male left leg **H** ventral view of female chelicerae.

darker in eye field, almost square, covered with black setae, edge with white setal stripe originating medially, thoracic part sloping acutely. Fovea indistinct. Clypeus black, anterior margin with long setae. Chelicerae black, with one retromarginal fissident tooth with two cusps and one retromarginal tooth. Endites brown. Labium brown. Sternum colored as endites, covered with sparse setae. Leg I black, others yellow. Abdomen elongated oval, dorsum pale brown with one pair of stripes of dense white setae, darker around stripes; venter pale yellow.

Palp (Fig. 3A–F) patella dark brown, slightly wider than long, covered with setae; tibia slightly wider than long, retrolateral tibial apophysis slightly longer than wide, lateral terminal apophysis darker, serrated along edge, dorsal tibial apophysis with small, serrated mesal branch; cymbium longer than wide, slightly longer than the length of the bulb in retrolateral view; bulb longer than wide, with sperm duct extending along margin; embolus short, half as long as bulb, needle shaped; dorsal embolic apophysis small, one fifth the length of embolus; tegular sclerite sheet-like, adjacent to dorsal embolic apophysis.

Female (Fig. 4A, B, E, F, H). Total length 3.52. Carapace 1.38 long, 0.90 wide. Abdomen 2.13 long, 1.09 wide. Clypeus 0.05 high. Eye sizes and inter-distances: AME 0.28, ALE 0.16, PLE 0.09, AERW 0.79, PERW 0.88, EFL 0.62. Legs: I 1.63 (0.55 + 0.62 + 0.26 + 0.20), II 1.40 (0.46 + 0.52 + 0.24 + 0.18), III 1.55 (0.49 + 0.48 + 0.30 + 0.28), IV 2.13 (0.66 + 0.75 + 0.39 + 0.33). Appearance of abdomen and legs as in male but carapace with two pairs of white setal latero-marginal stripes from lateral sides of AME and two longitudinal stripes of white setae from AMEs along PLE to the rear margin of carapace. All legs yellow and abdomen laterally with black pattern.

Epigyne (Fig. 4A, B) wider than long, with a wide hood posteriorly; copulatory openings circular; copulatory ducts long, curved medially; accessory gland indistinct; spermathecae oval; fertilization ducts folded 90°, well-developed.

Distribution. Known only from the type locality in Yunnan, China.

Genus *Euophrys* C. L. Koch, 1834

Type species. *Aranea frontalis* Walckenaer, 1802.

Euophrys xuyei sp. nov.

<http://zoobank.org/892D8E78-05A9-443D-A6A4-E85091DF1D33>

Figures 5, 6

Type material. *Holotype* ♂ (IZCAS-Ar40396), CHINA: Yunnan: Xishuangbanna, Mengla County, Menglun Township, XTBG, Leprosy Village, 21.8932N, 101.2883E, elevation ca 550 m, 21.IX.2017, Zhigang Chen leg. *Paratypes* 1♂1♀ (IZCAS-Ar40397, Ar40398), same data as holotype.

Etymology. The species is named after Mr. Ye Xu, who helped us greatly with this research; noun (name) in genitive case.

Diagnosis. *Euophrys xuyei* sp. nov. can be easily distinguished from other species by the following characters: male palpal tibia slightly longer than RTA in retrolateral view, tapering to a slightly hooded tip; bulb with tegular lobe covering tibia; embolic terminus flat, with small cusps; epigyne with copulatory openings on each side of median septum located posteriorly; copulatory ducts around spermathecae; accessory glands adjacent to copulatory openings.

Description. **Male** (Figs 5A–C, 6C, D, F, G). Total length 3.03. Carapace 1.70 long, 1.21 wide. Abdomen 1.52 long, 0.98 wide. Clypeus 0.06 high. Eye sizes and inter-distances: AME 0.41, ALE 0.26, PLE 0.23, AERW 0.94, PERW 0.86, EFL 0.64. Legs: I 2.92 (0.89 + 1.11 + 0.51 + 0.41), II 2.35 (0.79 + 0.81 + 0.37 + 0.38), III 2.81 (0.92 + 0.88 + 0.61 + 0.40), IV 3.08 (0.92 + 0.98 + 0.72 + 0.46). Carapace dark brown, cephalic part almost square, thoracic part sloping abruptly, with scattered white setae laterally. Fovea longitudinal, bar shaped. Clypeus dark brown. Chelicerae brown, with two promarginal teeth and one retromarginal enlarged tooth. Endites, labium and sternum colored as chelicerae but paler. Sternum slightly longer than wide, covered

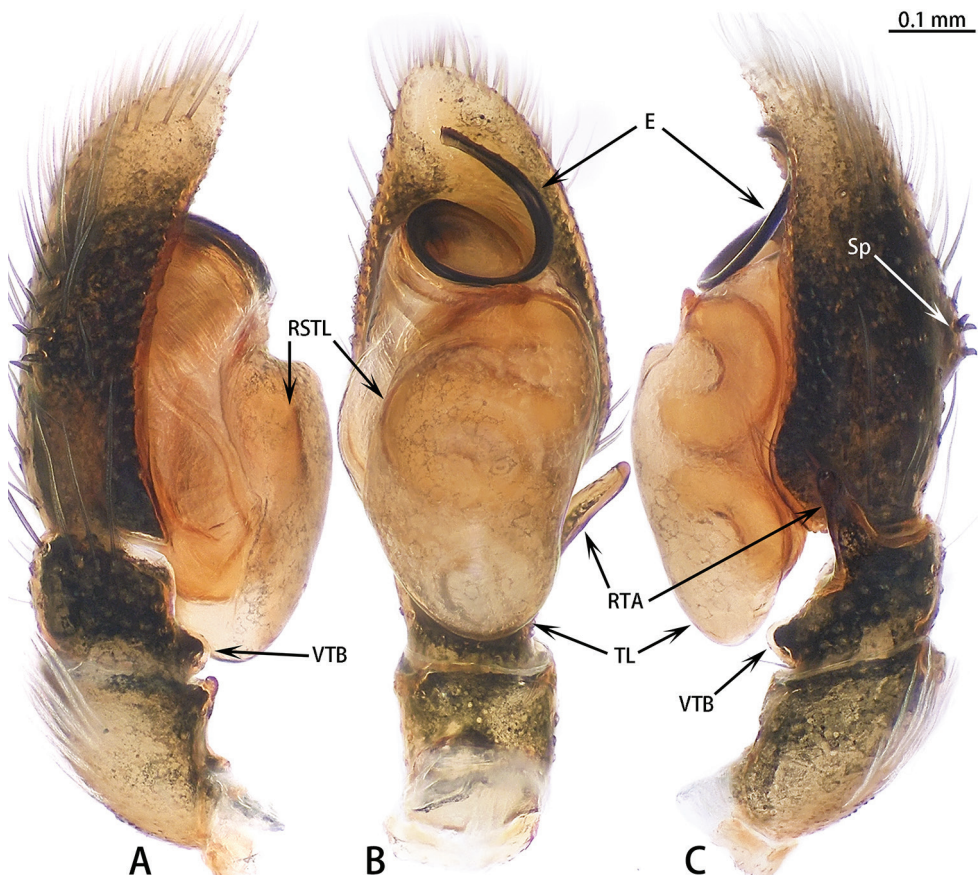


Figure 5. Palp of *Euophrys xuyei* sp. nov., male holotype. **A** prolateral **B** ventral **C** retrolateral.

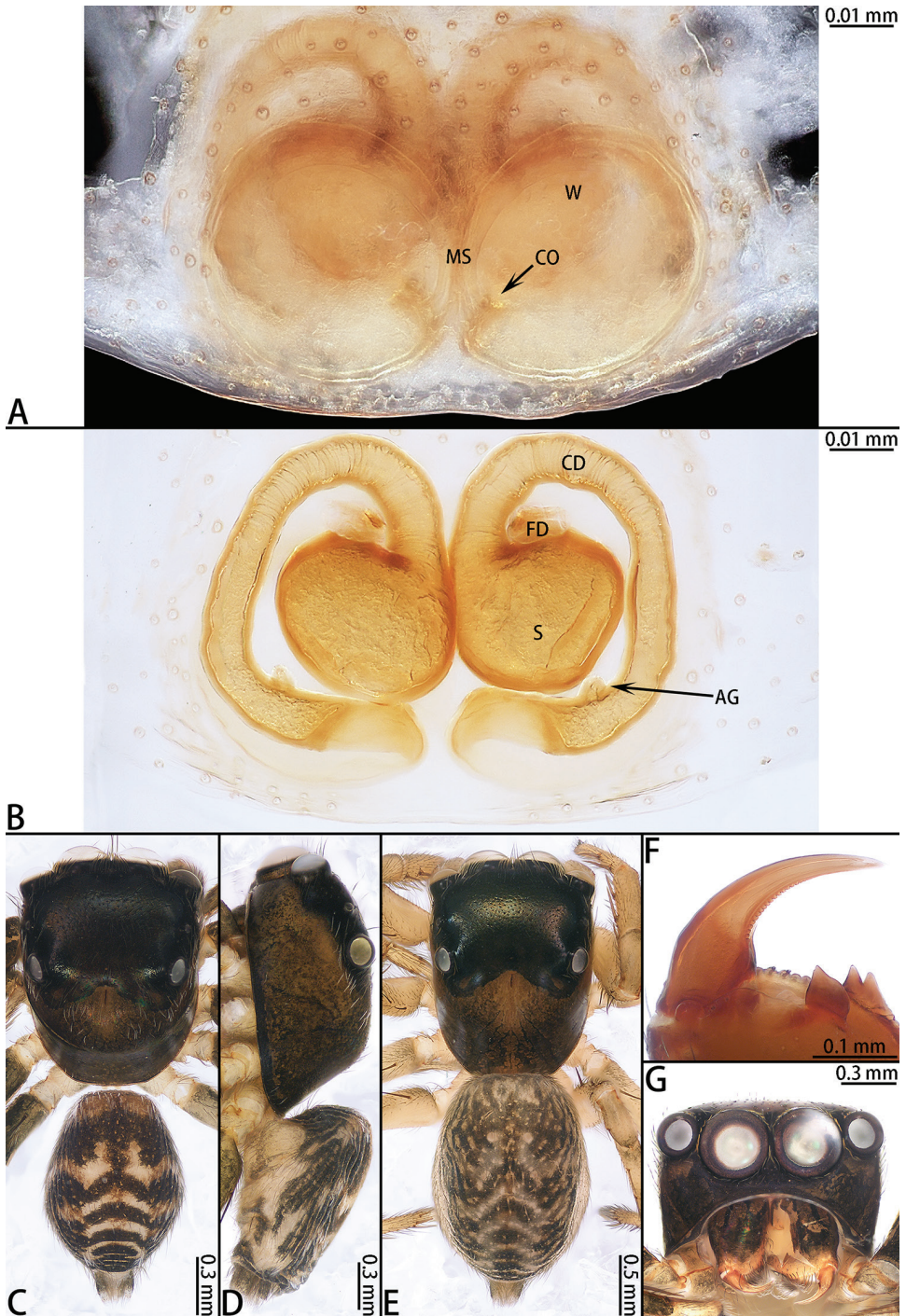


Figure 6. *Euophrys xuyei* sp. nov., female paratype and male holotype. **A** epigyne, ventral **B** vulva, dorsal **C** male holotype habitus, dorsal **D** same, lateral **E** female paratype habitus, dorsal **F** dorsal view of chelicerae, male paratype **G** frontal view of male paratype.

with dark setae. Legs yellow to black. Abdomen elongated oval, speckled laterally, with several chevrons posteriorly, covered with white setae; venter yellow-brown with spots.

Palp (Fig. 5A–C): Patella and tibia dark brown, slightly longer than wide, ventral tibial bump stout; RTA slightly shorter than tibia in retrolateral view, tapering to a slightly hooded tip; cymbium dark brown, longer than wide, widest medially, dorsally with a few short, stout spines in the middle; bulb longer than wide, with sperm duct relatively stout, meandering retrolaterally and tapering prolaterally; tegular lobe distinct, covering tibia; embolus with coiled base; embolic terminus flat with small cusps and thin membrane.

Female (Fig. 6A, B, E). Total length 3.72. Carapace 1.84 long, 1.36 wide. Abdomen 2.02 long, 1.36 wide. Clypeus 0.07 high. Eye sizes and inter-distances: AME 0.47, ALE 0.28, PLE 0.25, AERW 0.82, PERW 0.77, EFL 0.56. Legs: I 3.00 (0.97 + 1.14 + 0.47 + 0.42), II 2.65 (0.90 + 0.92 + 0.44 + 0.39), III 3.20 (1.10 + 1.02 + 0.66 + 0.42), IV 3.69 (1.10 + 1.19 + 0.89 + 0.51). Habitus similar to that of male except paler.

Epigyne (Fig. 6A, B) slightly wider than long, windows large, separated by median septum; copulatory openings on each side of median septum located posteriorly; copulatory ducts wrap around spermathecae; accessory glands adjacent to copulatory openings; spermathecae spherical; fertilization ducts originating from the median anterior edge of spermathecae, extending almost transversely.

Distribution. Known only from the type locality in Yunnan, China.

Genus *Foliabitus* Zhang & Maddison, 2012

Type species. *Foliabitus longzhou* Zhang & Maddison, 2012.

Foliabitus weihangi sp. nov.

<http://zoobank.org/CC5F3D88-678D-4BA7-9591-8A83B0D6CEC6>

Figures 7, 8

Type material. *Holotype* ♂ (IZCAS-Ar40399), CHINA: Yunnan: Xishuangbanna, Mengla County, Menglun Township, XTBG, Leprosy Village, 21.8932N, 101.2883E, elevation ca 550 m, 09.V.2018, Weihang Wang leg. *Paratypes* 4♂4♀ (IZCAS-Ar40400–Ar40407), CHINA: Yunnan: Xishuangbanna, Mengla County, Menglun Township, XTBG, Leprosy Village, 21.8986N, 101.2683E, elevation ca 523 m, 29.IV.2019, Zilong Bai leg.

Etymology. The species is named after Mr. Weihang Wang, who has helped us greatly with this research; noun (name) in genitive case.

Diagnosis. *Foliabitus weihangi* sp. nov. resembles *F. scutigerus* (Zabka, 1985) and *F. longzhou* Zhang & Maddison, 2012 by the long and coiled embolus, nearly forming a circle, but differs in the following: the RTA is curved towards the bulb medially in ventral view (vs. the RTA straight in ventral view in *F. scutigerus* and *F. longzhou*); the RTA curved without a small cusp distally (vs. with a small cusp distally in *F. longzhou*); the tegular lobe protrudes from the bulb (vs. indistinct in *F. scutigerus* and *F. longzhou*); in the female, the copulatory ducts are S-shaped (vs. C-shaped in *F. longzhou*).

Description. Male (Figs 7A–C, 8C, G). Total length 4.29. Carapace 1.94 long, 1.61 wide. Abdomen 2.35 long, 1.18 wide. Clypeus 0.05 high. Eye sizes and inter-distances: AME 0.43, ALE 0.27, PLE 0.25, AERW 1.34, PERW 1.26, EFL 1.02. Legs: I 7.25 (2.13 + 2.88 + 1.47 + 0.76), II 5.14 (1.66 + 1.78 + 1.10 + 0.60), III 5.50 (1.76 + 1.80 + 1.38 + 0.56), IV 5.61 (1.66 + 1.92 + 1.53 + 0.50). Carapace black, cephalic part with dense, green scale-like setae around eyes. Fovea longitudinal, posterior to PLEs. Clypeus yellow, covered with dense, white setae. Chelicerae black, with two retromarginal teeth and one promarginal tooth. Endites and labium dark brown. Sternum brown, covered with dark setae. Legs pale yellow, except leg I black, covered with long, dark setae. Abdomen elongated oval, dorsum black, with pale pattern; venter black with dark setae.

Palp (Fig. 7A–C): Patella red-brown, almost as long as wide; tibia stocky, slightly wider than long, with sclerotized, hook-shaped RTA, curved towards the bulb; cymbium longer than wide, covered with long setae; bulb longer than wide, regular lobe distinct, curved retrolaterally; embolus long and coiled, nearly forming a circle.

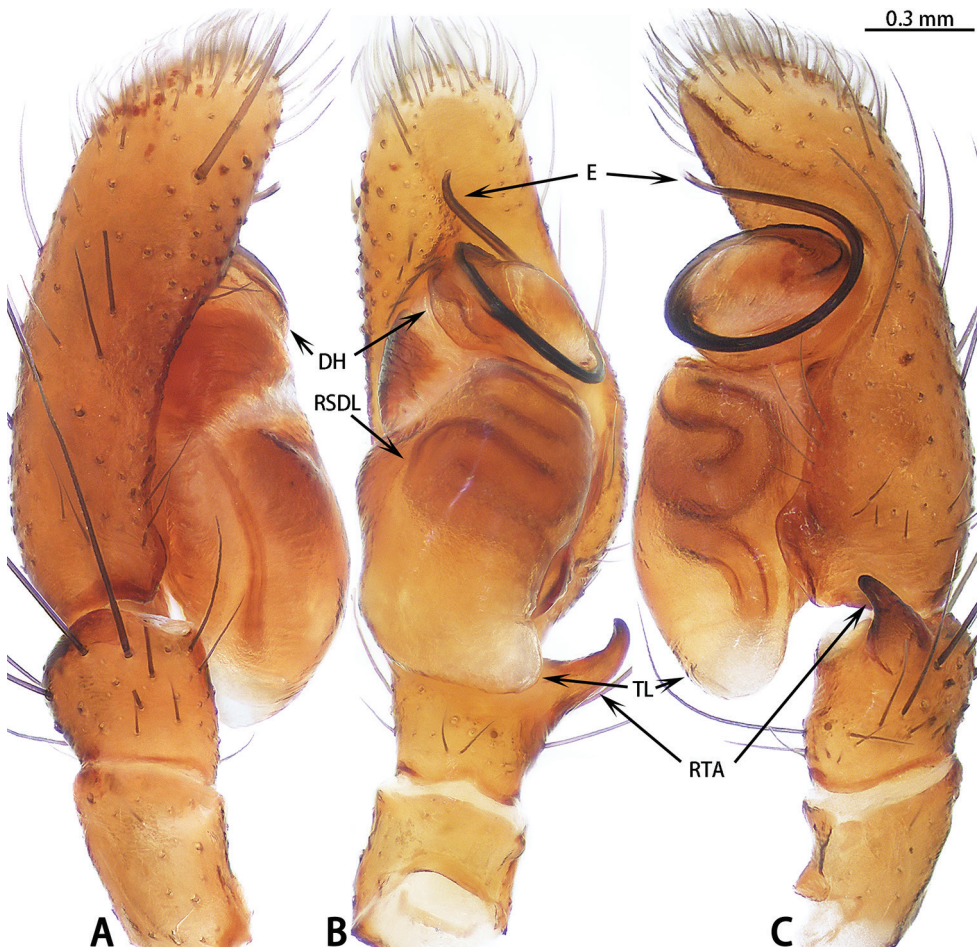


Figure 7. Palp of *Foliabitus weihangi* sp. nov., male holotype. **A** prolateral **B** ventral **C** retrolateral.

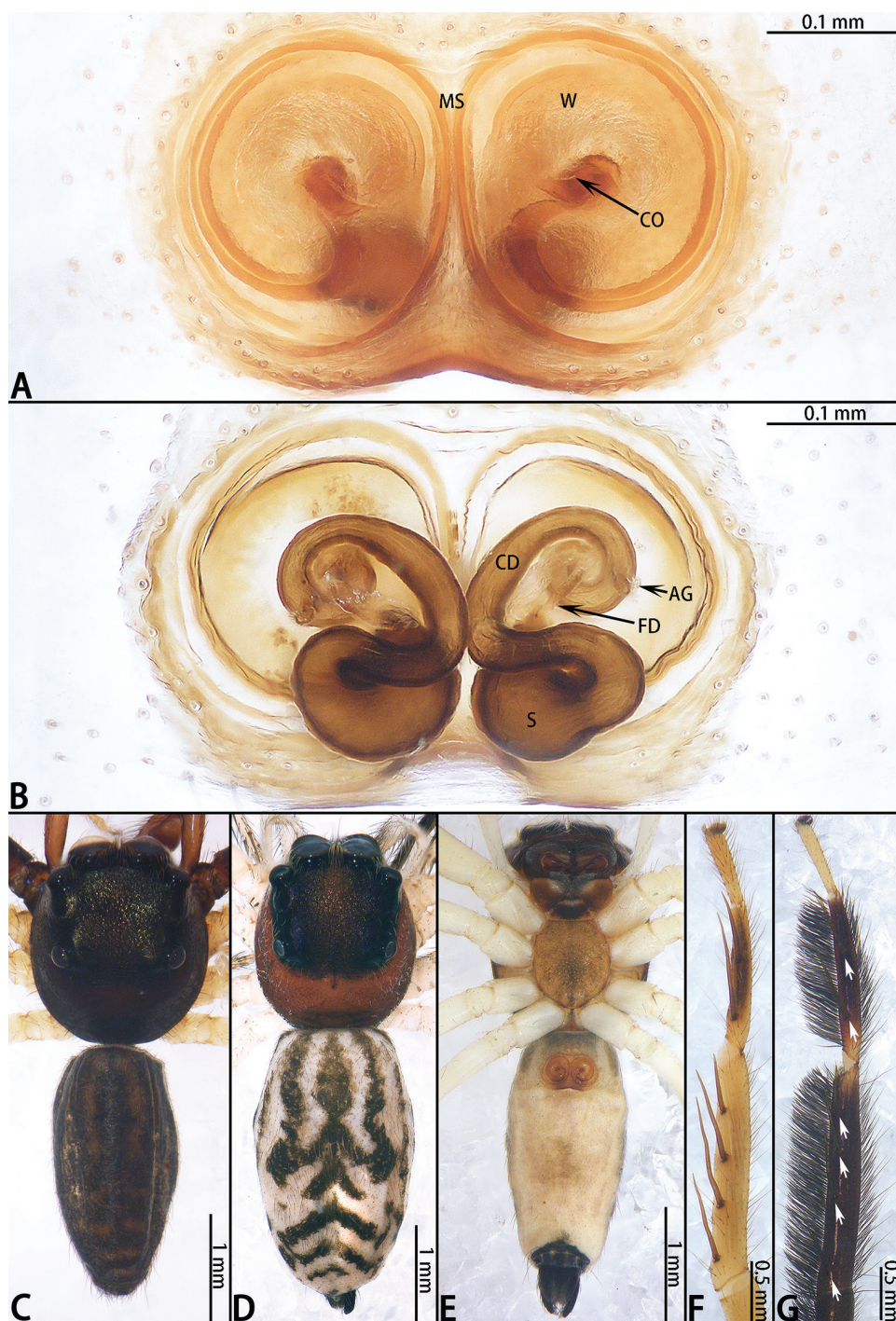


Figure 8. *Foliabitus weihangi* sp. nov., female paratype and male holotype. **A** epigyne, ventral **B** vulva, dorsal **C** male holotype habitus, dorsal **D** female paratype habitus, dorsal **E** same, ventral **F** prolateral view of right leg I, female paratype **G** prolateral view of right leg I, male holotype.

Female (Fig. 8A, B, D–F). Total length 4.82. Carapace 2.04 long, 1.63 wide. Abdomen 2.78 long, 1.60 wide. Clypeus 0.06 high. Eye sizes and inter-distances: AME 0.47, ALE 0.28, PLE 0.27, AERW 1.29, PERW 1.26, EFL 1.12. Legs: I 6.16 (1.96 + 2.43 + 1.16 + 0.61), II 5.00 (1.53 + 1.96 + 1.01 + 0.50), III 5.10 (1.59 + 1.66 + 1.31 + 0.54), IV 5.71 (1.66 + 1.98 + 1.53 + 0.54). Habitus (Fig. 8D) similar to that of male except paler. Abdomen dorsally whitish with black pattern similar to male, ventrally pale yellow, with small black triangular patch near spinnerets.

Epigyne (Fig. 8A, B) wider than long, windows large, separated by median septum; copulatory openings at center of windows; copulatory ducts long, S-shaped; spermathecae oval; fertilization ducts well-developed, membranous, lamellar.

Distribution. Known only from the type locality in Yunnan, China.

Genus *Megaepoa* gen. nov.

<http://zoobank.org/1B7801B2-2A3E-454C-9C4D-9083A5864DF1>

Type species. *Megaepoa yanfengi* sp. nov.

Etymology. The generic name is a combination of the word *Mega* and *Eupoa*, referring to the large size and evolutionary relationship of this new genus. The gender is feminine.

Diagnosis. *Megaepoa* gen. nov. resembles *Brettus* Thorell, 1895 morphologically by the stout RTA, long, undulating embolus, membranous conductor and the epigyne has one tortuous copulatory duct, but it differs in the following: an absence of ventral fringes of long, dense hairs on legs I (Caleb, Acharya and Kumar 2018), RTA stout, slightly longer than wide in lateral view (vs. the RTA is three times longer than wide in *Brettus*), half of the embolus is obscured by the embolic sheath (vs. uncovered in *Brettus*), terminal apophysis present (vs. terminal apophysis absent in *Brettus*); in the female, the vulva has two pairs of spermathecae (vs. one pair of spermathecae in *Brettus*) and the copulatory ducts are curled (vs. copulatory ducts straight in *Brettus*).

Description. Male. Total length 4.96–5.64. Carapace red-brown, covered with dense, brown setae, posteriorly with white stripes of setae, cephalic part black or brown. Fovea longitudinal. Clypeus black to brown, covered with several white setae. Chelicerae yellow-brown, with five promarginal and 9–13 retromarginal teeth. Endites pale brown. Labium pale brown, covered with brown setae. Sternum colored as endites, covered with brown setae. Legs brown, with long, white, dense setal ring and black ring pattern. Abdomen elongated oval, dorsum with one pair of stripes of dense white setae, transverse dark brown stripes medially; venter pale brown, covered with setae.

Palpal patella covered with dense, white setae dorsally; tibia slightly wider than long, with ventral apophysis, RTA stout, slightly longer than wide in lateral view; cymbium longer than wide; bulb longer than wide; embolus long, undulate, half of the embolus covered by embolic sheath, other half covered by lateral terminal apophysis; conductor membranous, sheet-shaped, adjacent to embolus; median apophysis small; lateral terminal apophysis whip-like, terminal apophysis distinct, stout.

Female. Total length 5.51. Habitus similar to those of male except paler.

Epigyne as long as wide; with posterior hood; windows large, oval; copulatory openings located medially; copulatory ducts curled on either side with two pairs of spermathecae; primary spermathecae small, situated anteriorly, secondary spermathecae large.

Composition. This new genus includes two species: *Megaepoa yanfengi* sp. nov. and *Megaepoa gravelyi* (Caleb, 2018), comb. nov.

Distribution. China (Yunnan), India.

***Megaepoa yanfengi* sp. nov.**

<http://zoobank.org/32CB491D-7AD6-4CB1-854B-5A0239E4BBCE>

Figures 9–11

Type material. *Holotype* ♂ (IZCAS-Ar40906), CHINA: Yunnan: Xishuangbanna, Mengla County, Menglun Township, XTBG, Leprosy Village, 21.8932N, 101.2883E, elevation ca 550 m, 27.IX.2017, Zhigang Chen, Yunchun Li, Qingyuan Zhao and Jincheng Liu leg. *Paratypes* 1♂3♀ (IZCAS-Ar40907–Ar40910), same locality as holotype, but 19.IX.2012, Yanfeng Tong leg.

Etymology. The species is named after Mr. Yanfeng Tong, who has helped us greatly with this research; noun (name) in genitive case.

Species compared. *Megaepoa gravelyi* comb. nov., originally described as *Brettus gravelyi* Caleb in Caleb, Acharya and Kumar (2018).

Diagnosis. The male of *Megaepoa yanfengi* sp. nov. resembles *M. gravelyi* in having a stout RTA, a long, undulate embolus and a membranous conductor but differs in the following: the RTA terminus is flat in ventral view (vs. subtriangular in *M. gravelyi*), the median apophysis is stout (vs. pointed in *M. gravelyi*), the inferior terminal apophysis is present, the terminal apophysis is semicircular (vs. inferior terminal apophysis absent and terminal apophysis subtriangular in *M. gravelyi*), and the lateral terminal apophysis wraps around the terminal apophysis (vs. next to terminal apophysis in *M. gravelyi*).

Description. Male (Figs 9, 10, 11C–E, G–H). Total length 5.64. Carapace 2.23 long, 1.74 wide. Abdomen 2.94 long, 1.33 wide. Clypeus 0.09 high. Eye sizes and inter-distances: AME 0.59, ALE 0.36, PLE 0.33, AERW 1.64, PERW 1.57, EFL 1.10. Legs: I 4.48 (1.36 + 1.64 + 0.89 + 0.59), II 4.28 (1.30 + 1.53 + 0.87 + 0.58), III 4.48 (1.33 + 1.50 + 1.02 + 0.63), IV 6.12 (1.84 + 1.98 + 1.63 + 0.67). Carapace red-brown, covered with dense, brown setae, posteriorly with white stripes of setae, cephalic part black. Fovea longitudinal. Clypeus black to brown, covered with several white setae. Chelicerae yellow-brown, with five promarginal and nine retromarginal teeth. Endites pale brown. Labium pale brown, covered with brown setae. Sternum colored as endites, covered with brown setae. Legs brown, with long, white, dense setal annulations. Abdomen elongated oval, dorsum with one pair of stripes with dense, white setae, transverse dark brown stripes medially; venter pale brown, covered with setae.

Palp (Figs 9A–D, 10A, B): Patella covered with dense, white setae dorsally; tibia slightly wider than long, with subtriangular ventral apophysis, RTA stout, slightly longer than wide in lateral view, terminus flat; cymbium longer than wide; bulb longer

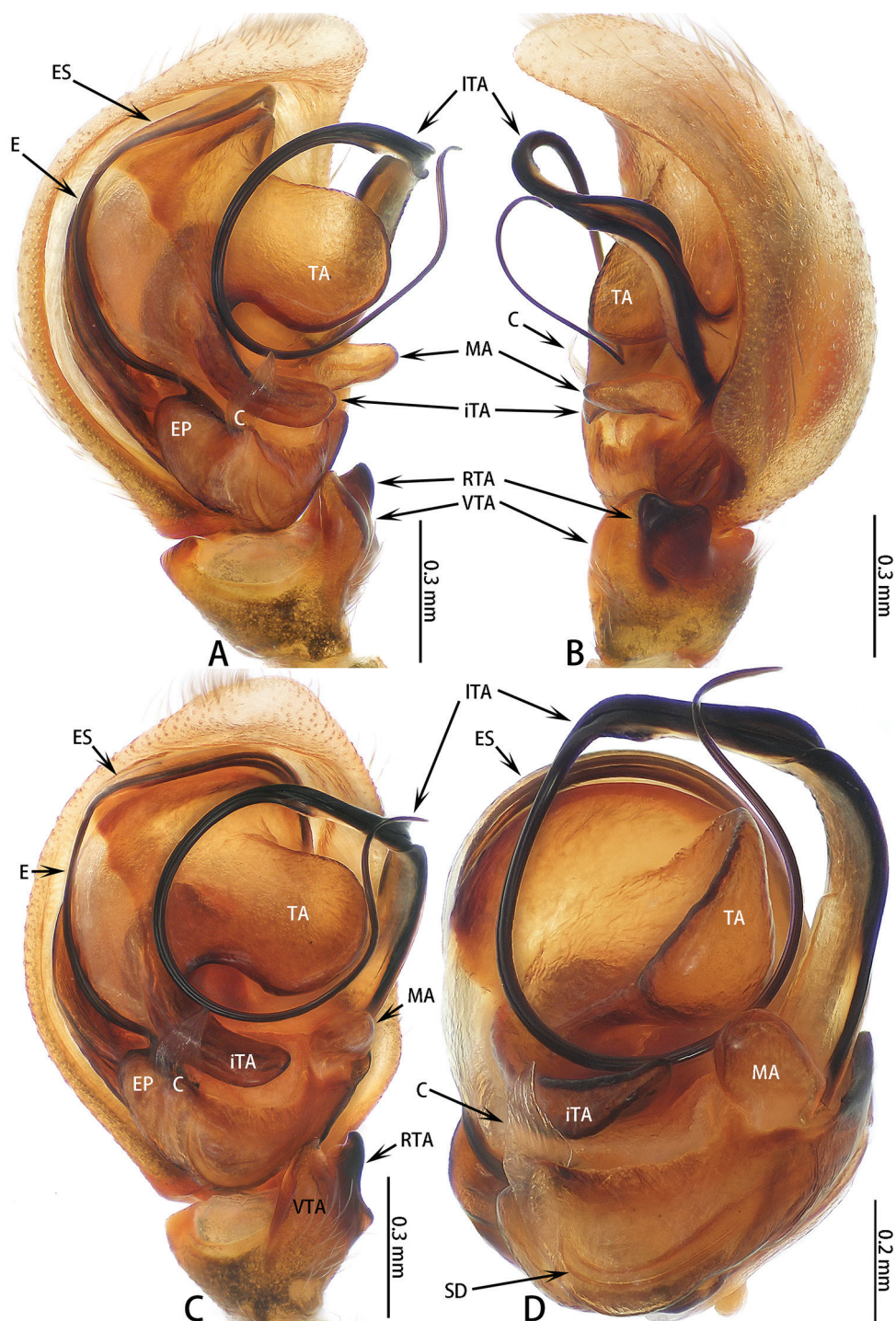


Figure 9. Palp of *Megaeupoa yanfengi* sp. nov. **A–C** male holotype; **D** male paratype. **A** prolateral **B** retrolateral **C** ventral **D** bulb, posterior.

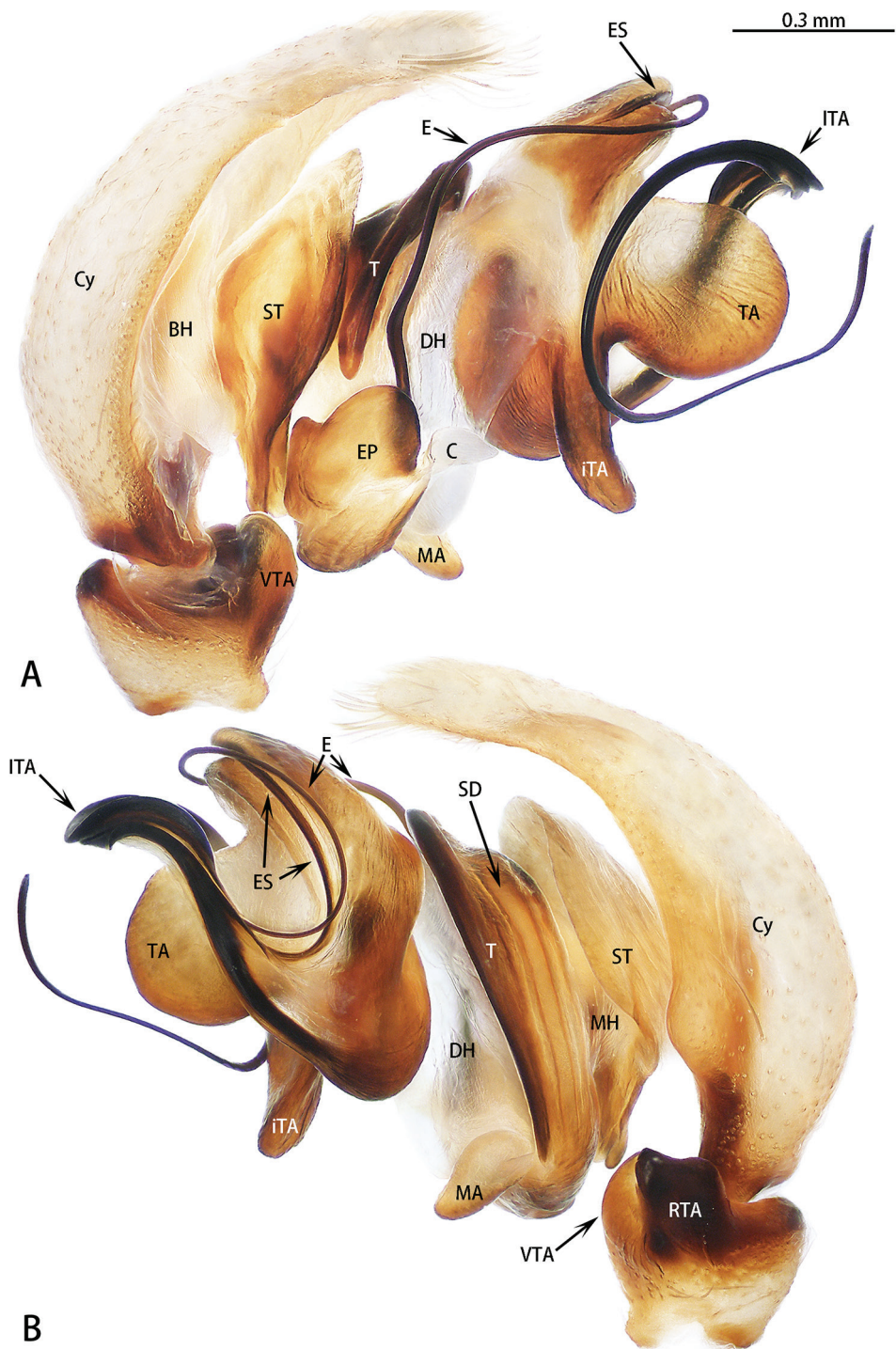


Figure 10. Right palp of *Megaeupoa yanfengi* sp. nov., male paratype (images flipped horizontally). **A** prolateral **B** retrolateral.

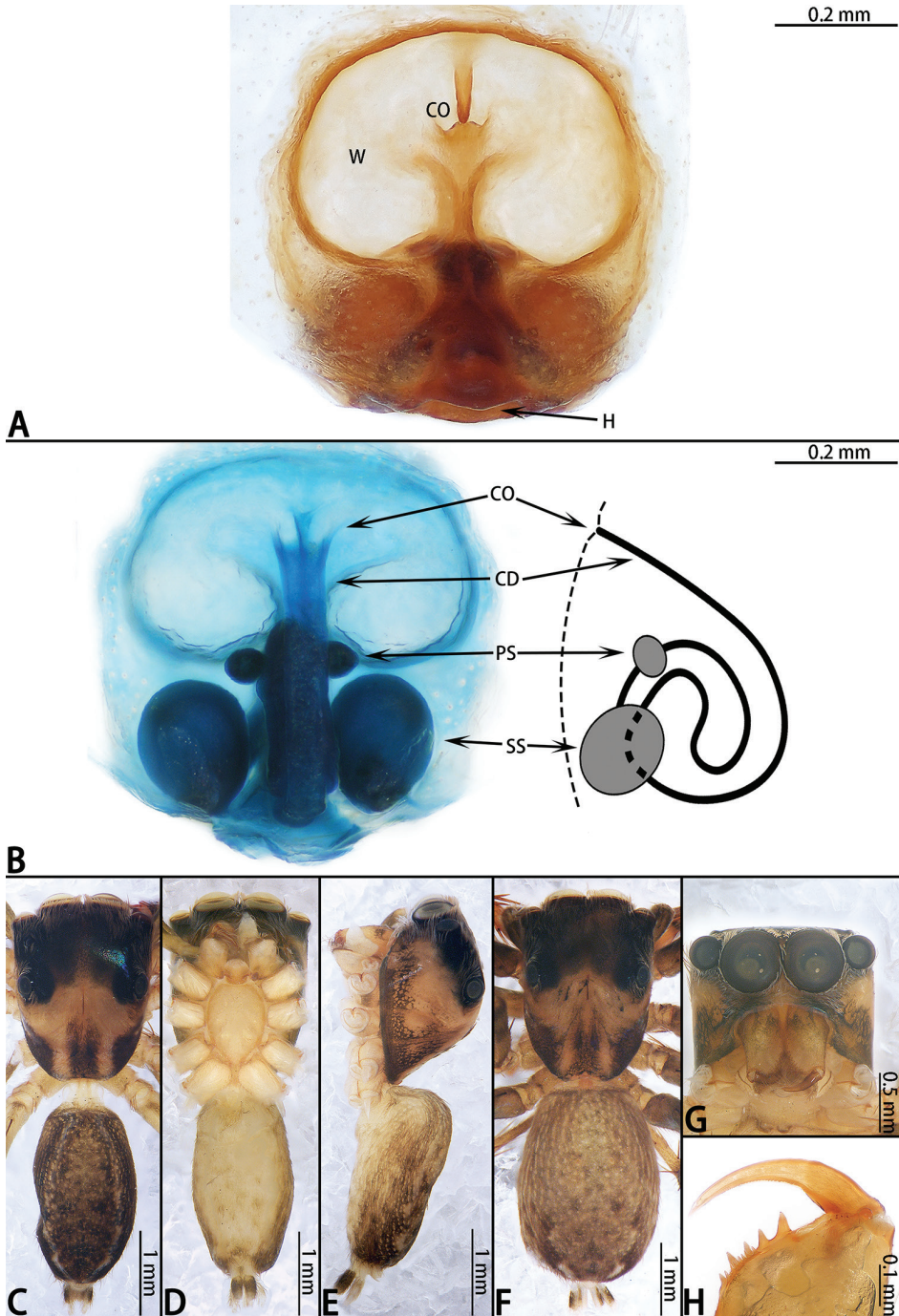


Figure 11. *Megaeupoa yanfengi* sp. nov., female paratype and male holotype. **A** epigyne, ventral **B** vulva, dorsal and schematic duct course shown in lateral view **C** male holotype habitus, lateral **D** male paratype habitus, ventral **E** male paratype habitus, lateral **F** female habitus, dorsal **G** frontal view of male paratype **H** dorsal view of chelicerae, paratype male.

than wide; embolus filiform, undulate, half of embolus obscured by embolic sheath, other half enclosed by lateral terminal apophysis; conductor membranous, sheet-shaped, adjacent to embolus; median apophysis three times longer than wide, stout; inferior terminal apophysis thin, four times longer than wide, lateral terminal apophysis filiform, embolus curled circularly, terminal apophysis semicircular.

Female (Fig. 11A, B, F). Total length 5.51. Carapace 2.35 long, 1.76 wide. Abdomen 3.09 long, 1.90 wide. Clypeus 0.09 high. Eye sizes and inter-distances: AME 0.62, ALE 0.37, PLE 0.26, AERW 1.87, PERW 1.71, EFL 1.22. Legs: I 4.29 (1.34 + 1.53 + 0.84 + 0.58), II 4.08 (1.27 + 1.38 + 0.88 + 0.55), III 4.33 (1.23 + 1.48 + 1.01 + 0.61), IV 5.81 (1.59 + 2.01 + 1.50 + 0.71). Habitus similar to that of male.

Epigyne (Fig. 11A, B) as long as wide; hood located posteriorly; windows large, oval; copulatory openings located medially; copulatory ducts curled on either side with two pairs of spermathecae; primary spermathecae small, situated anteriorly, secondary spermathecae larger than primary spermathecae.

Distribution. Known only from the type locality in Yunnan, China.

Genus *Nigorella* Wesolowska & Tomasiewicz, 2008

Type species. *Nigorella aethiopica* Wesolowska & Tomasiewicz, 2008.

Nigorella mengla sp. nov.

<http://zoobank.org/40E914DD-A047-4855-958A-7DCC3EC0C446>

Figures 12, 13

Type material. *Holotype* ♂ (IZCAS-Ar40911), CHINA: Yunnan: Xishuangbanna, Mengla County, Menglun Township, XTBG, Leprosy Village, 21.8932N, 101.2883E, elevation ca 550 m, 20.IX.2017, Yanfeng Tong leg. *Paratypes* 4♂1♀ (IZCAS-Ar40912–Ar40916), same data as holotype.

Etymology. The specific name is a noun in apposition and refers to the type locality.

Diagnosis. *Nigorella mengla* sp. nov. resembles *N. sichuanensis* Peng, Xie & Kim, 1993 and *Evarcha orientalis* (Song & Chai, 1992) by the bifurcated RTA and dorsal embolic apophysis behind the embolus but differs in the following: the palpal tibia is wider than long (vs. longer than wide in *N. sichuanensis*); the tegular lobe is folded (vs. straight in *N. sichuanensis* and *E. orientalis*). In the female, the spermathecae are S-shaped (vs. spermathecae coiled in *N. sichuanensis*), and the hoods are deeper (vs. unobvious in *E. orientalis*).

Description. Male (Figs 12, 13C, E). Total length 8.23. Carapace 4.5 long, 3.19 wide. Abdomen 4.04 long, 2.69 wide. Clypeus 0.22 high. Eye sizes and inter-distances: AME 0.79, ALE 0.38, PLE 1.04, AERW 2.35, PERW 2.34, EFL 1.02. Legs: I 7.97 (2.50 + 3.28 + 1.28 + 0.91), II 5.19 (1.64 + 1.88 + 0.96 + 0.71), III 8.01 (2.81 + 2.56 + 1.61 + 1.03), IV 7.85 (2.45 + 2.56 + 1.84 + 1.00). Carapace black, red-brown

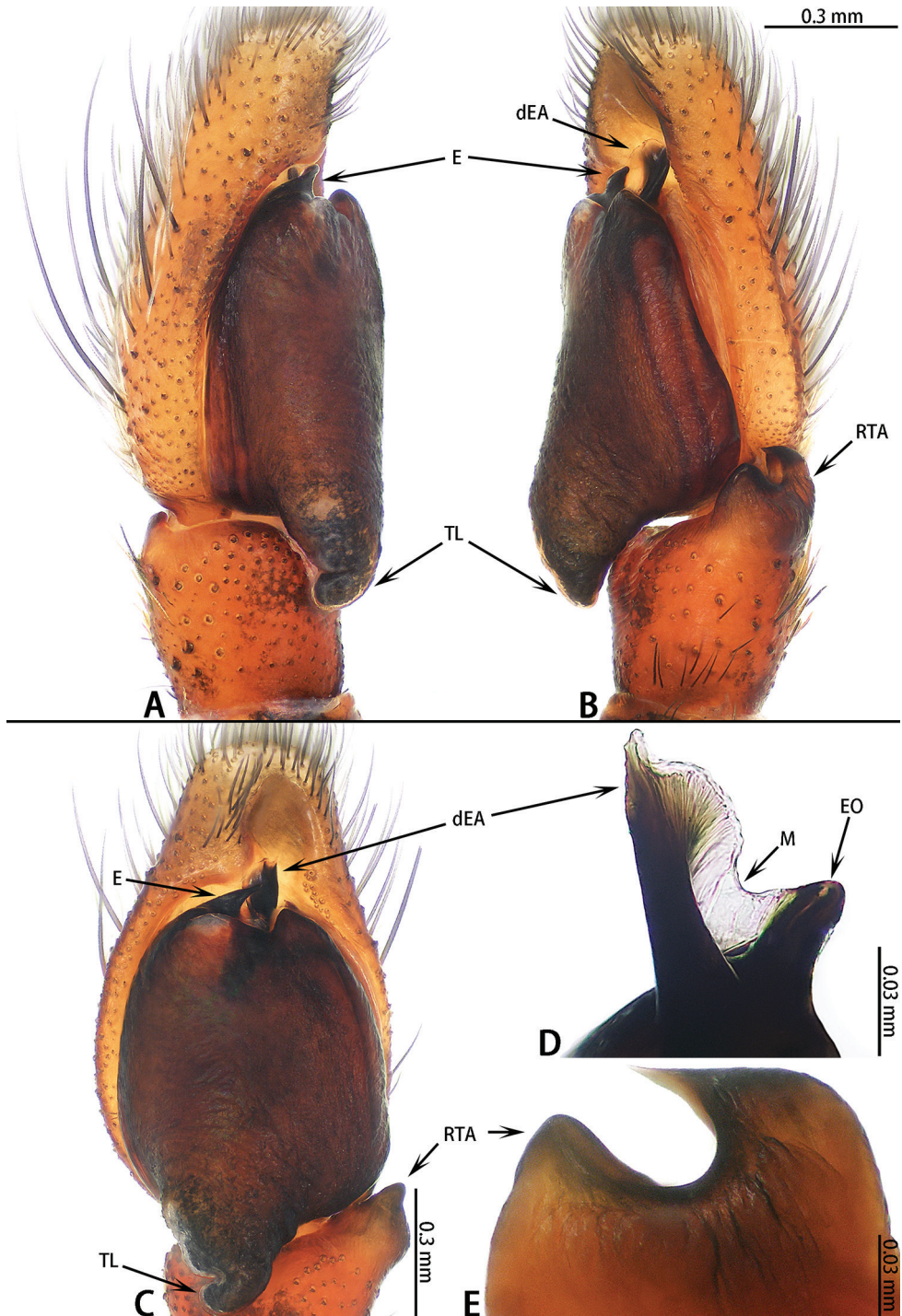


Figure 12. Palp of *Nigorella mengla* sp. nov. **A–C** male holotype; **D, E** male paratype **A** prolateral **B** retrolateral **C** ventral **D** embolic division, dorsal view **E** RTA, retrolateral view.

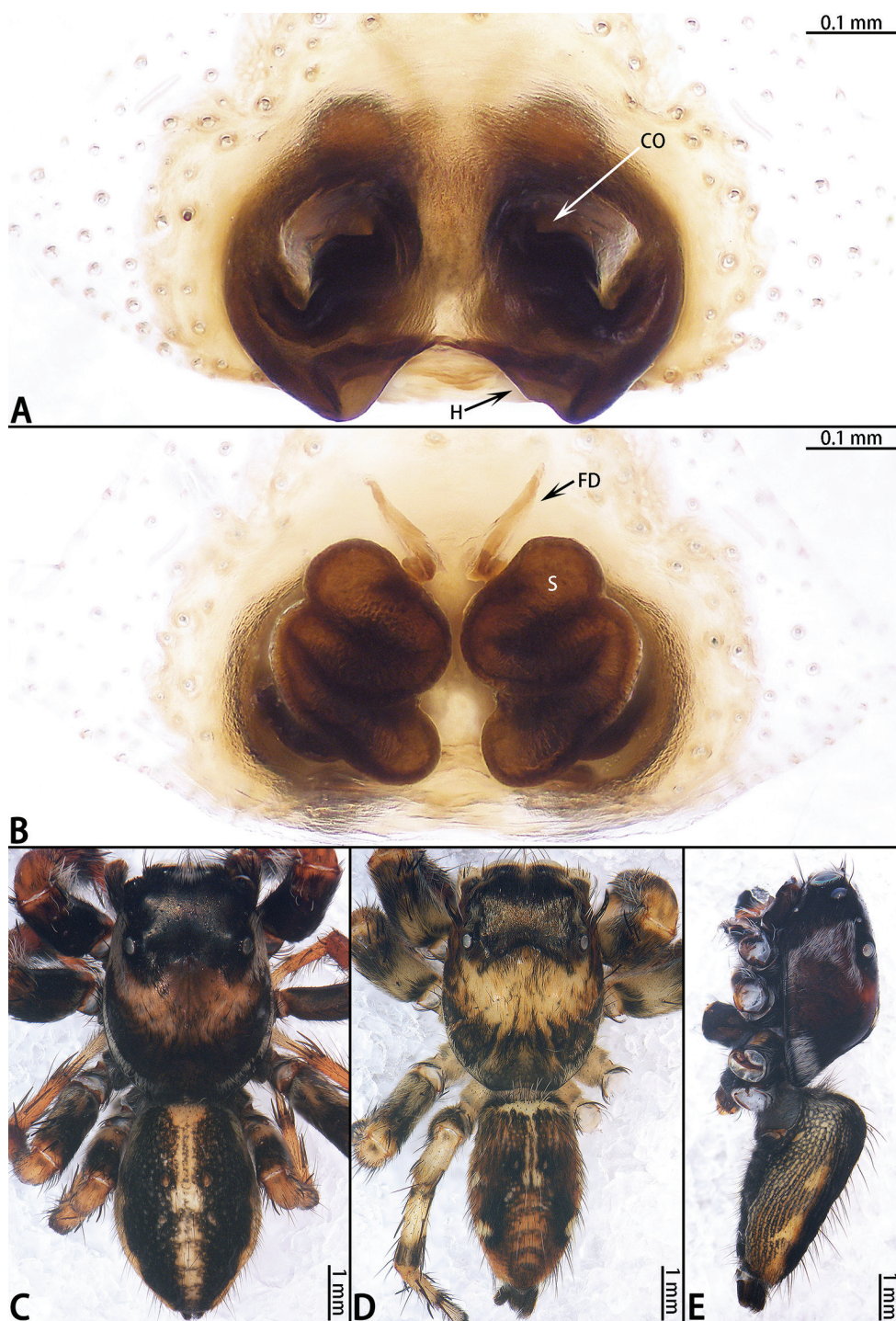


Figure 13. *Nigorella mengla* sp. nov., female paratype and male holotype. **A** epigyne, ventral **B** vulva, dorsal **C** male holotype habitus, dorsal **D** female paratype habitus, dorsal **E** male paratype habitus, lateral.

medially, carapace edge and sides of cephalic part with white setal stripes, thoracic part sloping abruptly, clothed with white and dark setae. Fovea indistinct. Clypeus orange-brown to dark brown, covered with thin setae. Chelicerae black, with two retromarginal teeth and one promarginal tooth. Endites and labium black. Sternum black, covered with dark setae. Legs red-brown except femora with black pattern. Abdomen elongated oval, dorsum with two pairs of muscle depressions, with white line centrally, white line widens medially; venter black with dark setae; sides black with white spots.

Palp (Fig. 12A–E): Tibia slightly wider than long, RTA bifurcated, ventral branch blunt, dorsal ramus well-developed, pointed; cymbium flattened, covered with long setae; bulb almost round, with sperm duct extending along margin, tegular lobe folded; embolus stout, dorsal embolic apophysis behind embolus, connected to embolus with membrane.

Female (Fig. 13A, B, D). Total length 7.85. Carapace 4.30 long, 2.94 wide. Abdomen 4.12 long, 2.04 wide. Clypeus 0.19 high. Eye sizes and inter-distances: AME 0.65, ALE 0.41, PLE 0.33, AERW 2.36, PERW 2.35, EFL 1.02. Legs: I 6.43 (2.20 + 2.58 + 0.92 + 0.73), II 6.10 (2.00 + 2.45 + 0.88 + 0.77), III 7.42 (2.56 + 2.50 + 1.48 + 0.88), IV 7.08 (2.18 + 2.48 + 1.56 + 0.86). Habitus similar to that of male except paler.

Epigyne (Fig. 13A, B) wider than long, with pair of hoods near epigastral furrow; copulatory openings situated medially, C-shaped; copulatory ducts indistinct; spermathecae S-shaped; fertilization ducts well-developed.

Distribution. Known only from the type locality in Yunnan, China.

Genus *Onomastus* Simon, 1900

Type species. *Onomastus nigricaudus* Simon, 1900.

Onomastus chenae sp. nov.

<http://zoobank.org/5D31CB6D-4D53-48E2-80EB-613A6B860611>

Figures 14, 15

Type material. *Holotype* ♂ (IZCAS-Ar40917), CHINA: Yunnan: Xishuangbanna, Mengla County, Menglun Township, XTBG, Leprosy Village, 21.8932N, 101.2883E, elevation ca 550 m, 27.IX.2017, Zhigang Chen, Yunchun Li, Qingyuan Zhao and Jincheng Liu leg. *Paratypes* 5♂8♀ (IZCAS-Ar40918–Ar40930), same data as holotype.

Etymology. The species is named after Ms. Chen Zeng, who helped us greatly with this research; noun (name) in genitive case.

Diagnosis. Males of *Onomastus chenae* sp. nov. are similar to *O. kanoi* Ono, 1995 by having the same shaped spur, a mesal branch of conductor, and a wide conductor. However, *O. chenae* sp. nov. can be distinguished by having three apophyses on the median apophysis (vs. two in *O. kanoi*); the epigyne is wider than long (vs. longer than wide in *O. kanoi*), and the copulatory opening is located posteriorly (vs. medially in *O. kanoi*).

Description. Male (Figs 14A–C, 15C, E–G). Total length 3.66. Carapace 1.60 long, 0.92 wide. Abdomen 2.30 long, 0.75 wide. Clypeus 0.02 high. Eye sizes and inter-distances: AME 0.34, ALE 0.10, PLE 0.12, AERW 0.88, PERW 0.67, EFL 0.47. Legs: I 4.67 (1.28 + 1.85 + 1.00 + 0.44), II 4.55 (1.36 + 1.65 + 1.01 + 0.53), III 4.81 (1.28 + 1.62 + 1.40 + 0.51), IV 5.90 (1.67 + 1.95 + 1.79 + 0.49). Carapace white, black ring around PLEs and PME, cephalic part covered with golden setae. Fovea longitudinal, PLEs situated posteriorly. Clypeus white, covered with white setae. Chelicerae white with five promarginal and five retromarginal teeth. Endites, labium and sternum white. Legs white, base of tibia with black spot. Abdomen elongated oval, white.

Palp (Fig. 14A–C): Patella with subtriangular patellar apophysis, longer than wide; tibia as long as wide, without retrolateral apophysis; cymbium longer than wide, covered with setae; bulb approximately as long as wide, structure of bulb is complex; sperm duct clearly visible; spur on mesal branch of conductor hook shaped; conductor wide; embolic division occupying large area on bulb with developed conductor; embolus filiform, very long; median apophysis with three apophyses.

Female (Fig. 15A, B, D, E). Total length 3.76. Carapace 1.61 long, 1.05 wide. Abdomen 2.2 long, 0.73 wide. Clypeus 0.02 high. Eye sizes and inter-distances: AME 0.36, ALE 0.10, PLE 0.60, AERW 0.99, PERW 0.70, EFL 1.69. Legs: I 4.59 (1.29 +

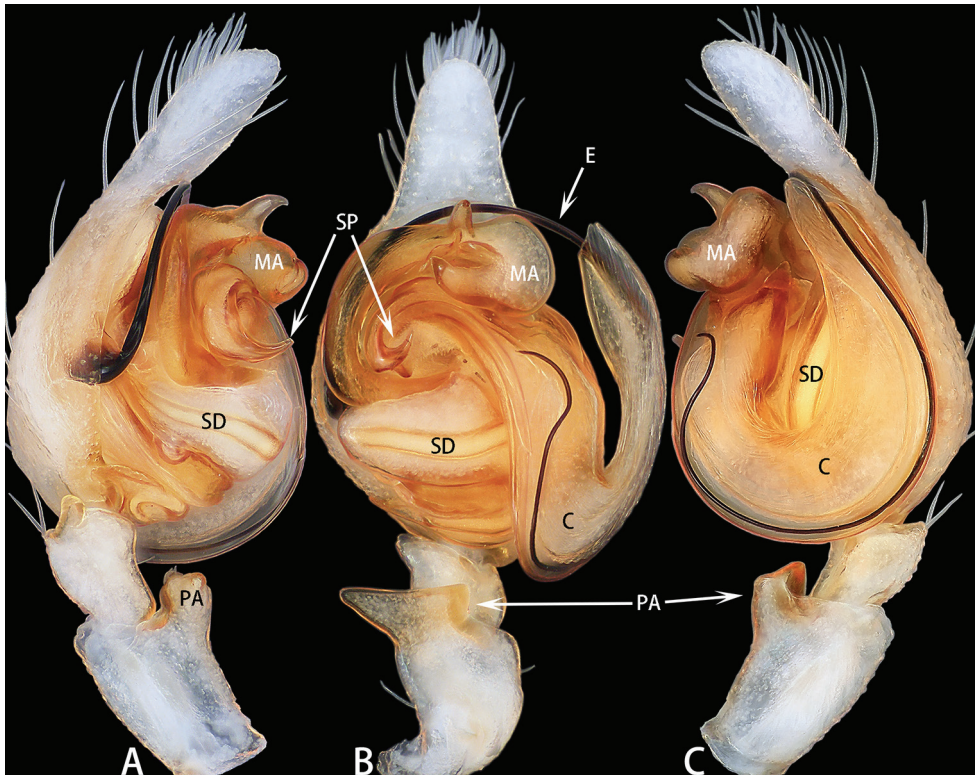


Figure 14. Palp of *Onomastus chenae* sp. nov., male holotype. **A** prolateral **B** ventral **C** retrolateral.

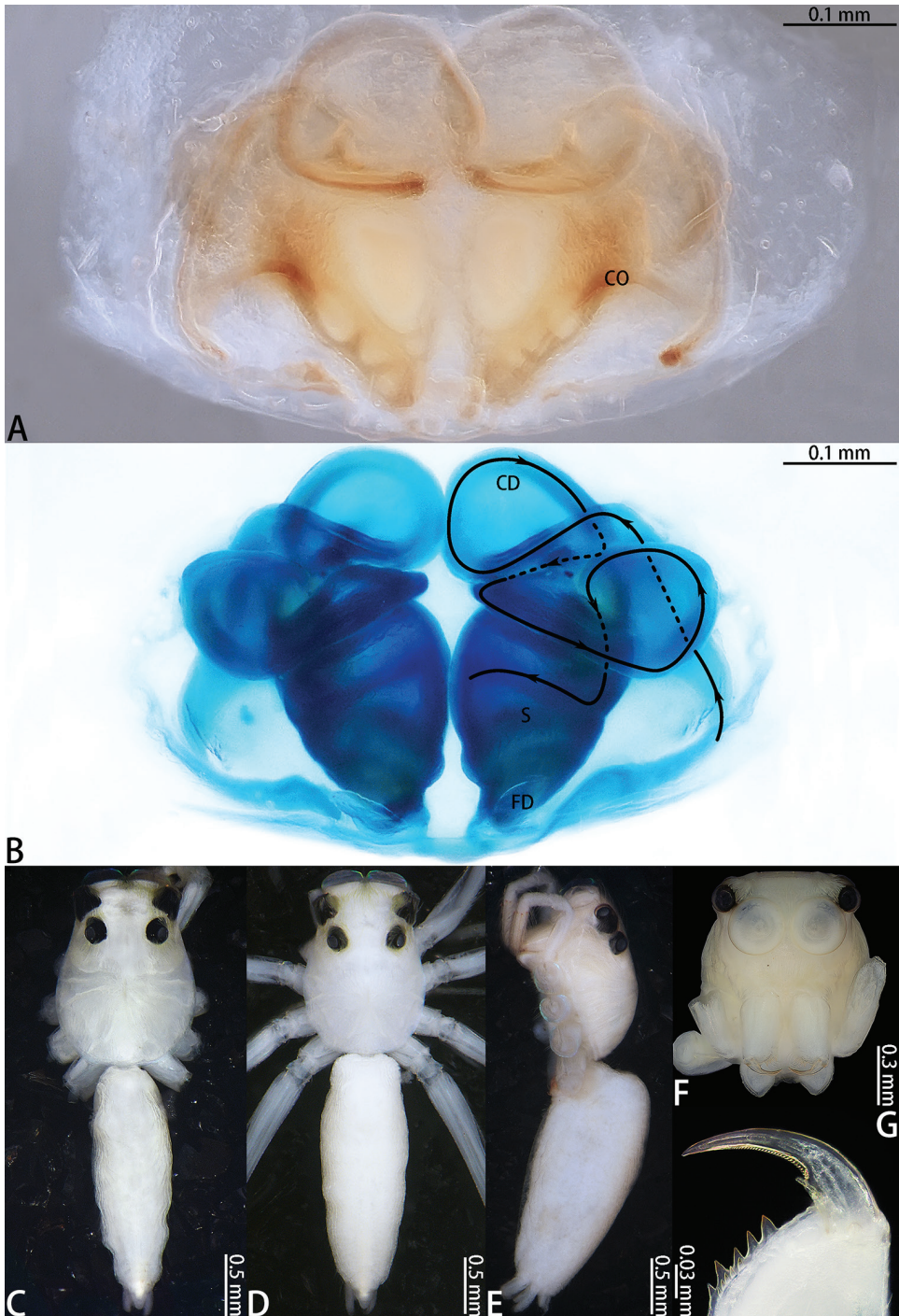


Figure 15. *Onomastus chenae* sp. nov., female paratype and male holotype. **A** epigyne, ventral **B** vulva, dorsal **C** male holotype habitus, dorsal **D** female paratype habitus, dorsal **E** same, lateral **F** frontal view of male paratype **G** dorsal view of chelicerae, paratype.

1.86 + 1.01 + 0.43), II 4.45 (1.31 + 1.70 + 1.02 + 0.42), III 4.89 (1.31 + 1.59 + 1.45 + 0.54), IV 5.96 (1.68 + 1.98 + 1.76 + 0.54). Habitus similar to that of male.

Epigyne (Fig. 15A, B) wider than long; transverse copulatory openings sclerotized posteriorly; copulatory ducts and spermathecae visible on epigynal surface, copulatory ducts meandering; spermathecae oval posteriorly.

Distribution. Known only from the type locality in Yunnan, China.

Genus *Synagelides* Strand, 1906

Type species. *Synagelides agoriformis* Strand, 1906.

Synagelides platnicki sp. nov.

<http://zoobank.org/D99DB9E7-6486-4471-9BDD-C5D20635D47B>

Figures 16, 17

Type material. *Holotype* ♂ (IZCAS-Ar40931), CHINA: Yunnan: Xishuangbanna, Mengla County, Menglun Township, XTBG, Leprosy Village, 21.8932N, 101.2883E, elevation ca 550 m, 27.IX.2017, Zhigang Chen, Yunchun Li, Qingyuan Zhao and Jincheng Liu leg. *Paratypes* 6♂7♀ (IZCAS-Ar40932–Ar40944), same data as holotype.

Etymology. The species is named after the late Norman I. Platnick (1951–2020, see Li 2020b) to commemorate his immense contribution to arachnology; noun (name) in genitive case.

Diagnosis. *Synagelides platnicki* sp. nov. resembles *S. lushanensis* Xie & Yin, 1990 by having the same shaped median apophysis and a coiled embolus but differs by the following: the length of the RTA is four times as long as the length of the cymbium (vs. two times the length in *S. lushanensis*), the dorsal tibial apophysis is absent (vs. present in *S. lushanensis*) and the retrolateral median apophysis is L-shaped in retrolateral view (vs. straight in *S. lushanensis*); in the female, the hood of the epigyne is as long as wide (vs. two times longer than wide in *S. lushanensis*), and the copulatory duct is coiled 360° (vs. S-shaped in *S. lushanensis*).

Description. **Male** (Figs 16, 17C, D, F, G). Total length 3.22. Carapace 1.50 long, 0.99 wide. Abdomen 1.85 long, 0.75 wide. Clypeus 0.03 high. Eye sizes and inter-distances: AME 0.35, ALE 0.20, PLE 0.19, AERW 0.98, PERW 1.03, EFL 0.90. Legs: I 3.93 (1.18 + 1.02 + 1.00 + 0.44 + 0.29), II 2.14 (0.63 + 0.24 + 0.52 + 0.49 + 0.26), III 2.44 (0.71 + 0.26 + 0.58 + 0.60 + 0.29), IV 3.24 (0.89 + 0.36 + 0.84 + 0.79 + 0.36). Carapace red-brown, widest between coxae II and III, covered with white setae. Clypeus dark brown. Fovea subtriangular. Chelicerae yellow-brown, with two pro-marginal teeth and one retromarginal tooth. Endites yellow-brown. Sternum brown, covered with thin setae. Femur of leg I red, other femora with black pattern ventrally. Abdomen elongated oval, dorsum with two pairs of white dorso-lateral spots, covered with white setae on the spots and laterally; venter black.

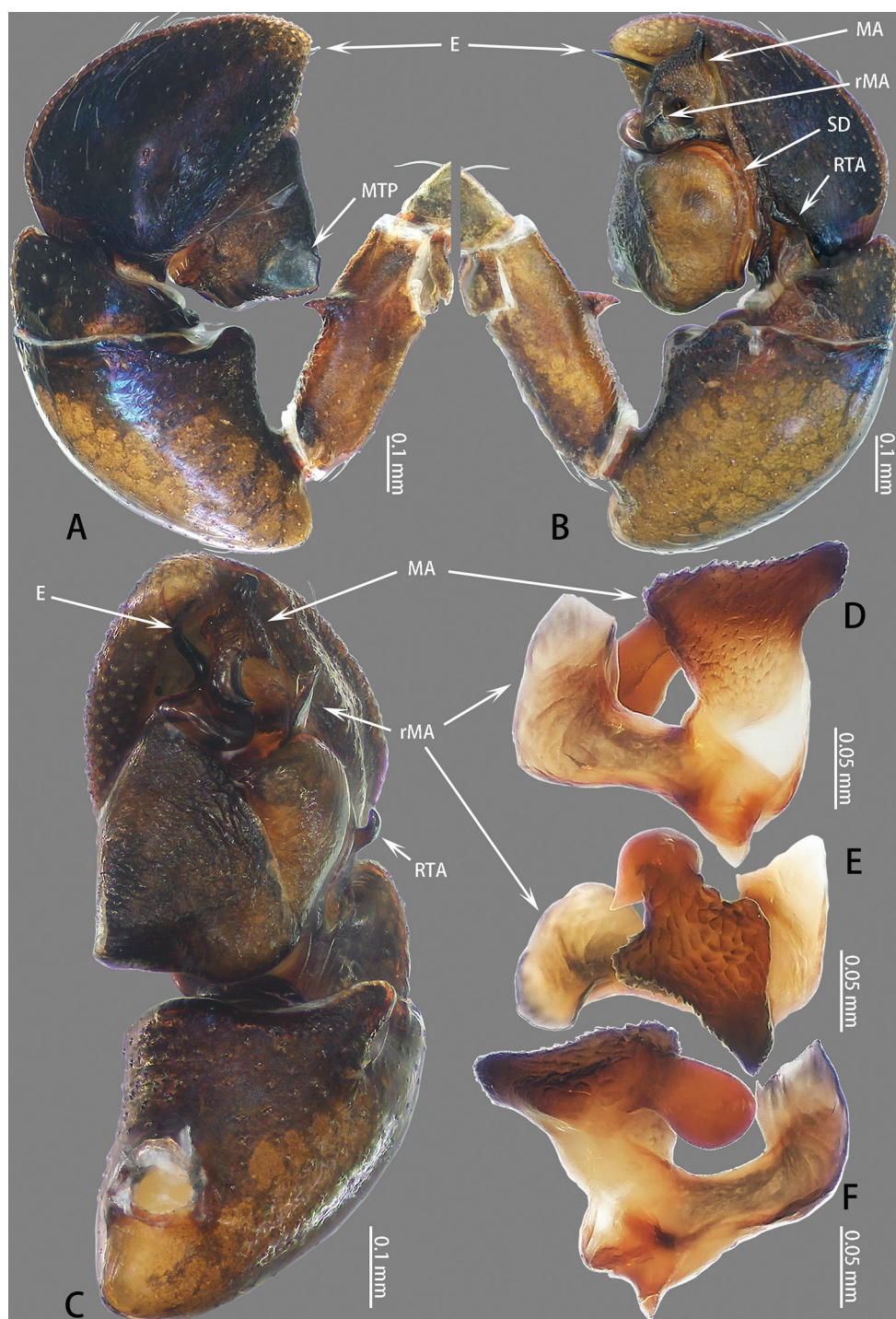


Figure 16. Palp of *Synagelides platnicki* sp. nov. **A–C** male holotype; **D–F** retrolateral median apophysis on right palp, male paratype. **A** prolateral **B** retrolateral **C** ventral **D** retrolateral **E** ventral **F** prolateral.

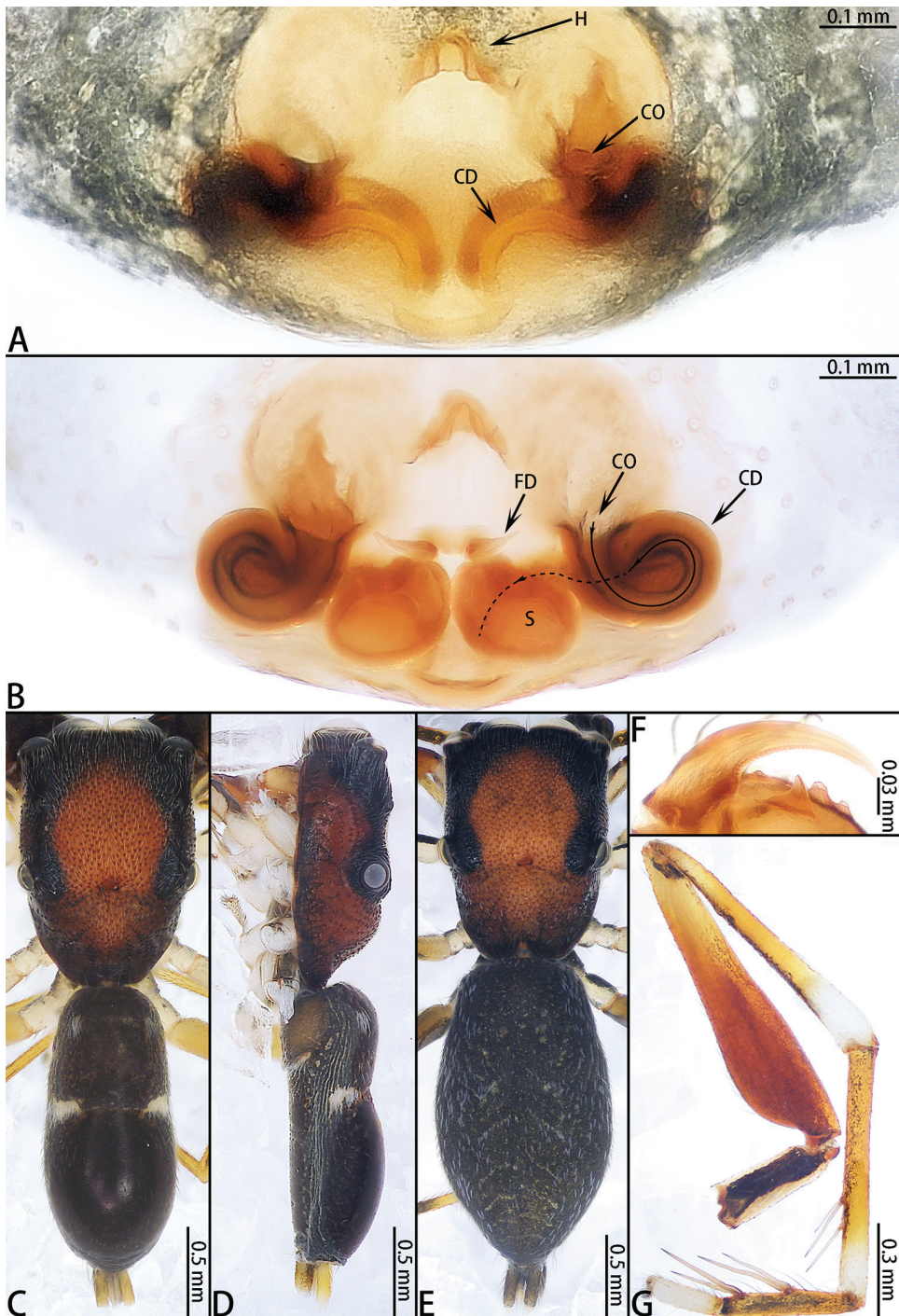


Figure 17. *Synagelides platnicki* sp. nov., female paratype and male holotype. **A** epigyne, ventral **B** vulva, dorsal **C** male holotype habitus, dorsal **D** male paratype habitus, lateral **E** female paratype habitus, dorsal **F** dorsal view of chelicerae, paratype male **G** prolateral view of left leg I, male paratype. female.

Palp (Fig. 16A–F) femur brown, approximately three times longer than wide, with ventral median apophysis; patella brown, almost as long as wide, with ventral bulge; tibia wider than long, with RTA tapering towards tip, slightly longer than tibia, tip slightly bent ventrally then dorsally; cymbium flattened, widest medially; bulb widest at base; embolus coiled 360°, median apophysis with serrated apophysis, terminus blunt; retrolateral median apophysis L-shaped.

Female (Fig. 17A, B, E). Total length 3.68. Carapace 1.48 long, 0.98 wide. Abdomen 2.14 long, 1.03 wide. Clypeus 0.02 high. Eye sizes and inter-distances: AME 0.33, ALE 0.20, PLE 0.20, AERW 1.03, PERW 1.03, EFL 0.85. Legs: I 2.91 (0.88 + 0.69 + 0.70 + 0.37 + 0.27), II 1.99 (0.61 + 0.23 + 0.47 + 0.41 + 0.27), III 2.14 (0.61 + 0.25 + 0.49 + 0.51 + 0.28), IV 2.73 (0.75 + 0.30 + 0.70 + 0.69 + 0.29). Habitus similar to that of male.

Epigyne (Fig. 17A, B) wider than long, with anterior hood, copulatory openings located medially; copulatory ducts visible on epigynal surface, coiled 360°, connecting with anterior edge of spermathecae; spermathecae spherical, touching medially; fertilization ducts originating from the median anterior edge of spermathecae, extending almost transversely.

Distribution. Known only from the type locality in Yunnan, China.

Discussion

The following two jumping spiders were also collected from Xishuangbanna Tropical Botanical Garden (XTBG).

Irura mandarina Simon, 1903

Irura mandarina Simon 1903: 735 (♀); Prószyński 2017: 18, fig. 6D (♀)

Kinhia prima Żabka 1985: 233, figs 246–250 (♂) syn. nov.

Irura prima: Prószyński 2017: 18, fig. 6E (♂).

Comments. Conspecificity of the *Irura mandarina* female and *I. prima* (Żabka, 1985) male is based on a large number of spider specimens collected at the same locality in XTBG with similarities in size and color pattern.

Ptocasius montiformis Song, 1991

Ptocasius montiformis Song 1991: 163, figs 1A–D (♀); Song, Zhu and Chen 1999: 543, figs 313T–U (♀)

Evarcha digitata Peng & Li 2002: 469, figs 1A–D (♂); Prószyński 2018: 155, fig. 151 (♂) syn. nov.

Comments. Conspecificity of the *Ptocasius montiformis* female and *Evarcha digitata* male is based on a large number of spider specimens collected at the same locality in XTBG with similarities in size and color pattern.

Adding the new species reported here, a total of 121 jumping spider species are reported from Xishuangbanna, of which, 77 species (marked with an asterisk) were collected in XTBG by us. A checklist of Xishuangbanna jumping spiders follows, and for a complete list of taxonomic references see WSC (2020).

1. *Afraflacilla ballarini* Cao & Li, 2016*
2. *Agorius tortilis* Cao & Li, 2016*
3. *Attulus penicillatus* (Simon, 1875)*
4. *Bavia capistrata* (C. L. Koch, 1846)
5. *Bavirecta exilis* (Cao & Li, 2016)*
6. *Bianor angulosus* (Karsch, 1879)
7. *Bristowia heterospinosa* Reimoser, 1934*
8. *Burmattus pococki* (Thorell, 1895)
9. *Burmattus sinicus* Prószyński, 1992*
10. *Carrhotus sannio* (Thorell, 1877)
11. *Carrhotus sarahcrewsae* Cao & Li, 2016*
12. *Carrhotus yunnanensis* (Song, 1991)
13. *Chalcoscirtus lii* Lei & Peng, 2010*
14. *Chalcoscirtus nenilini* Marusik, 1990*
15. *Cheliceroides longipalpis* Zabka, 1985*
16. *Chinattus dactyloides* (Xie, Peng & Kim, 1993)
17. *Chinattus wengnanensis* Cao & Li, 2016*
18. *Chinophrys mengyangensis* Cao & Li, 2016*
19. *Chrysilla acerosa* Wang & Zhang, 2012
20. *Cocalus menglaensis* Cao & Li, 2016*
21. *Colyttus proszynskii* Caleb, Chatterjee, Tyagi, Kundu & Kumar, 2018*
22. *Colyttus yiwui* sp. nov.*
23. *Cosmophasis xiaolonghaensis* Cao & Li, 2016*
24. *Cytaea tongi* Wang & Li, 2020*
25. *Cytaea yunnanensis* Cao & Li, 2016*
26. *Dendroicius hotaruae* sp. nov.*
27. *Dexippus pengi* Wang & Li, 2020*
28. *Emathis sumatranus* Prószyński & Deeleman-Reinhold, 2012*
29. *Epeus bicuspidatus* (Song, Gu & Chen, 1988)
30. *Epeus flavobilineatus* (Doleschall, 1859)
31. *Epeus indicus* Prószyński, 1992
32. *Epocilla calcarata* (Karsch, 1880)*
33. *Euophrys subwanyan* Wang & Li, 2020*
34. *Euophrys xuyei* sp. nov.*

35. *Eupoa yunnanensis* Peng & Kim, 1997
36. *Evarcha orientalis* (Song & Chai, 1992)*
37. *Evarcha pococki* Zabka, 1985
38. *Foliabitus weihangi* sp. nov.*
39. *Gedea fungiformis* (Xiao & Yin, 1991)*
40. *Gedea pinguis* Cao & Li, 2016*
41. *Gelotia liuae* Wang & Li, 2020*
42. *Gelotia syringopalpis* Wanless, 1984
43. *Gelotia zhengi* Cao & Li, 2016*
44. *Harmochirus brachiatus* (Thorell, 1877)
45. *Harmochirus insulanus* (Kishida, 1914)*
46. *Hasarius adansonii* (Audouin, 1826)
47. *Hyllus diardi* (Walckenaer, 1837)*
48. *Icius bamboo* Cao & Li, 2016*
49. *Icius minimus* Wesolowska & Tomasiewicz, 2008*
50. *Irura longiochelicerca* (Peng & Yin, 1991)
51. *Irura lvshilinensis* Wang & Li, 2020*
52. *Irura mandarina* Simon, 1903*
53. *Irura yunnanensis* (Peng & Yin, 1991)*
54. *Lechia squamata* Zabka, 1985*
55. *Megaeupoa yanfengi* sp. nov.*
56. *Menemerus bivittatus* (Dufour, 1831)
57. *Myrmapeni borneensis* (Peckham & Peckham, 1907)*
58. *Myrmaplata platyleoides* (O. Pickard-Cambridge, 1869)*
59. *Myrmaplata turriiformis* (Badcock, 1918)*
60. *Myrmarachne angusta* (Thorell, 1877)
61. *Myrmarachne brevis* Xiao, 2002
62. *Myrmarachne circulus* Xiao & Wang, 2004
63. *Myrmarachne cornuta* Badcock, 1918
64. *Myrmarachne elongata* Szombathy, 1915*
65. *Myrmarachne gisti* Fox, 1936
66. *Myrmarachne jacksoni* Prószyński & Deeleman-Reinhold, 2010*
67. *Myrmarachne lugubris* (Kulczyński, 1895)
68. *Myrmarachne melanocephala* MacLeay, 1839
69. *Myrmarachne melanotarsa* Wesolowska & Salm, 2002*
70. *Nannenus menghaiensis* Cao & Li, 2016*
71. *Nigorella mengla* sp. nov.*
72. *Onomastus nigrimaculatus* Zhang & Li, 2005
73. *Onomastus chenae* sp. nov.*
74. *Pancorius latus* Cao & Li, 2016*
75. *Pancorius magnus* Zabka, 1985*
76. *Phaeacius malayensis* Wanless, 1981
77. *Phintella accentifera* (Simon, 1901)*

78. *Phintella arcuata* Huang, Wang & Peng, 2015
79. *Phintella bifurcata* Prószyński, 1992*
80. *Phintella debilis* (Thorell, 1891)*
81. *Phintella dives* (Simon, 1899)*
82. *Phintella lepidus* Cao & Li, 2016*
83. *Phintella pygmaea* (Wesolowska, 1981)*
84. *Phintella sancha* Cao & Li, 2016*
85. *Phintella suavisoides* Lei & Peng, 2013
86. *Phintella vittata* (C. L. Koch, 1846)
87. *Phintelloides jesudasi* (Caleb & Mathai, 2014)*
88. *Phintelloides versicolor* (C. L. Koch, 1846)
89. *Plexippus petersi* (Karsch, 1878)
90. *Portia fimbriata* (Doleschall, 1859)*
91. *Portia labiata* (Thorell, 1887)
92. *Portia quei* Zabka, 1985
93. *Ptocius kinhi* Zabka, 1985*
94. *Ptocius montiformis* Song, 1991*
95. *Ptocius paraweyersi* Cao & Li, 2016*
96. *Ptocius strupifer* Simon, 1901*
97. *Rhene albiger* (C. L. Koch, 1846)
98. *Rhene atrata* (Karsch, 1881)
99. *Rhene flavigera* (C. L. Koch, 1846)*
100. *Rhene mengla* Wang & Li, 2020*
101. *Rhene rubrigeria* (Thorell, 1887)
102. *Rhene setipes* Zabka, 1985*
103. *Rhene triapophyses* Peng, 1995*
104. *Siler semiglaucus* (Simon, 1901)
105. *Siler zhangae* Wang & Li, 2020*
106. *Spartaeus jaegeri* Logunov & Azarkina, 2008
107. *Spartaeus spinimanus* (Thorell, 1878)*
108. *Spartaeus thailandica* Wanless, 1984
109. *Stenaelurillus fuscus* Cao & Li, 2016*
110. *Stertinius borneensis* Logunov, 2018*
111. *Synagelides cavaleriei* (Schenkel, 1963)
112. *Synagelides platnicki* sp. nov.*
113. *Synagelides yunnan* Song & Zhu, 1998*
114. *Telamonia vlijmi* Prószyński, 1984
115. *Thiania bhamoensis* Thorell, 1887
116. *Thiania suboppressa* Strand, 1907*
117. *Thyene bivittata* Xie & Peng, 1995
118. *Thyene orientalis* Zabka, 1985*
119. *Thyene triangula* Xie & Peng, 1995*
120. *Toxeus maxillosus* C. L. Koch, 1846*
121. *Zeuxippus yunnanensis* Peng & Xie, 1995

Acknowledgments

The manuscript benefitted greatly from comments by Gergin Blagoev (Guelph, Canada), John T.D. Caleb (West Bengal, India), and Galina N. Azarkina (Novosibirsk, Russia). Sarah Crews (San Francisco, USA) kindly checked the English of the manuscript. Yanfeng Tong (Shenyang, China), Hao Yu (Guiyang, China), Zhigang Chen (IZCAS), Zilong Bai (IZCAS), Shijia Liu (Shenyang, Chian) rendered effective assistance in fieldwork. This study was supported by the National Natural Science Foundation of China (NSFC-31530067) to Shuqiang Li.

References

- Caleb JTD, Chatterjee S, Tyagi K, Kundu S, Kumar V (2018) A new generic record and two new species of jumping spiders (Araneae: Salticidae) from India. *Acta Arachnologica* 67(1): 7–12. <https://doi.org/10.2476/asjaa.67.7>
- Li S (2020a) Spider taxonomy for an advanced China. *Zoological Systematics* 45(2): 73–77. <https://doi.org/10.11865/zs.202011>
- Li S (2020b) Dr. Norman I. Platnick, in memoriam (1951–2020). *Acta Arachnologica Sinica* 29(1): 1–1.
- Nentwig W, Blick T, Bosmans R, Gloor D, Hänggi A, Kropf C (2020) Version 16.2.2020. <https://www.araneae.nmbe.ch> [Accessed on 16 February 2020]
- Ono H (1995) Four East Asian spiders of the families Eresidae, Araneidae, Thomisidae and Salticidae (Arachnida, Araneae). *Bulletin of the National Museum of Nature and Science, Tokyo (A)* 21: 157–169.
- Peng X, Li S (2002) Two jumping spiders from Guangxi, China (Araneae: Salticidae). *Acta Zootaxonomica Sinica* 27: 469–473.
- Peng X, Xie L, Kim J (1993) Study on the spiders of the genus *Evarcha* (Araneae: Salticidae) from China. *Korean Arachnology* 9: 7–18.
- Prószyński J (2017) Pragmatic classification of the world's Salticidae (Araneae). *Ecologica Montenegrina* 12: 1–133. <https://doi.org/10.37828/em.2017.12.1>
- Prószyński J (2018) Review of genera *Evarcha* and *Nigorella*, with comments on *Emertonius*, *Padilothorax*, *Stagetillus*, and description of five new genera and two new species (Araneae: Salticidae). *Ecologica Montenegrina* 16: 130–179. <https://doi.org/10.37828/em.2018.16.12>
- Simon E (1903) Etudes arachnologiques. 33^e Mémoire. LIII. Arachnides recueillis à Phuc-Son (Annam) par M. H. Fruhstorfer (nov-dec. 1899). *Annales de la Société Entomologique de France* 71: 725–736
- Song D (1991) Three new species of the genus *Procasius* from China (Araneae: Salticidae). *Sinozoologia* 8: 163–168.
- Song D, Chai J (1992) On new species of jumping spiders (Araneae: Salticidae) from Wuling Mountains area, southwestern China. *Journal of Xinjiang University* 9(3): 76–86.
- Song D, Zhu M, Chen J (1999) *The Spiders of China*. Hebei Science and Technology Publishing House, Shijiazhuang, 640 pp.

- Thorell T (1895) Descriptive Catalogue of the Spiders of Burma. London, 406 pp.
- Wang C, Li S (2020) On eight species of jumping spiders from Xishuangbanna, Yunnan, China (Araneae, Salticidae). ZooKeys 909: 25–57. <https://doi.org/10.3897/zookeys.909.47137>
- WSC (2020) World Spider Catalog. Version 21.0. Natural History Museum Bern. <http://wsc.nmbe.ch> [accessed on 15.02.2019]
- Xie L, Yin C (1990) Two new species and three newly recorded species of the genus *Synagelides* from China (Araneae: Salticidae). Acta Zootaxonomica Sinica 15: 298–304.
- Żabka M (1985) Systematic and zoogeographic study on the family Salticidae (Araneae) from Viet-Nam. Annales Zoologici, Warszawa 39: 197–485.
- Zhang J, Maddison WP (2012) New euophryine jumping spiders from Southeast Asia and Africa (Araneae: Salticidae: Euophryinae). Zootaxa 3581: 53–80. <https://doi.org/10.11646/zootaxa.3581.1.2>