

627  
Un38t22

US Army Corps  
of Engineers

TECHNICAL REPORT CERC-84-7

# THE TMA SHALLOW-WATER SPECTRUM DESCRIPTION AND APPLICATIONS

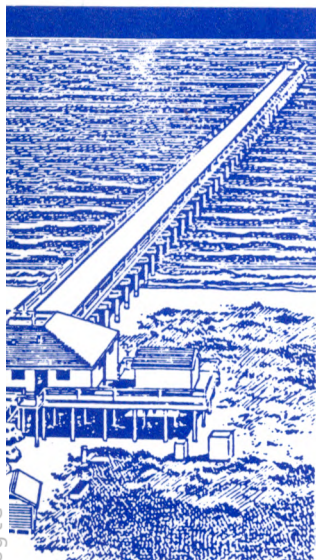
by

Steven A. Hughes

Coastal Engineering Research Center

DEPARTMENT OF THE ARMY

Waterways Experiment Station, Corps of Engineers  
PO Box 631, Vicksburg, Mississippi 39180-0631



University of Illinois  
Metz Reference Room  
B106 NCEL  
208 N. Romine Street  
Urbana, Illinois 61801

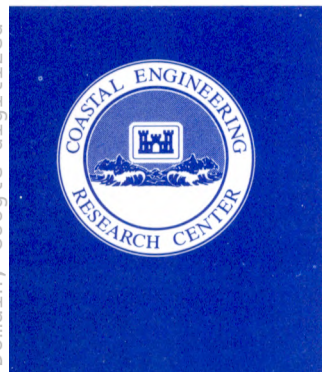
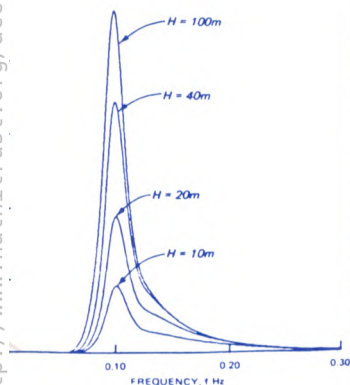
RECEIVED  
AUG 6 1985  
METZ REFERENCE ROOM



December 1984

Final Report

Approved For Public Release; Distribution Unlimited



UNIVERSITY OF MICHIGAN



3 9015 08652 6913

Prepared for DEPARTMENT OF THE ARMY  
US Army Corps of Engineers  
Washington, DC 20314-1000

Under Civil Works Research Work Unit 31592

Original from

TECHNICAL REPORT ARCHIVE & IMAGE  
LIBRARY