

Published in final edited form as:

J Med Genet. 2008 November ; 45(11): 710–720. doi:10.1136/jmg.2008.058701.

Clinical and molecular delineation of the 17q21.31 microdeletion syndrome

D A Koolen¹, A J Sharp^{2,3}, J A Hurst⁴, H V Firth⁵, S J L Knight⁶, A Goldenberg⁷, P Saugier-Verber⁷, R Pfundt¹, L E L M Vissers¹, A Destrée⁸, B Grisart⁸, L Rooms⁹, N Van der Aa¹⁰, M Field¹¹, A Hackett¹¹, K Bell¹², M J M Nowaczyk¹³, G M S Mancini¹⁴, P J Poddighe¹⁴, C E Schwartz¹⁵, E Rossi¹⁶, M De Gregori¹⁶, L L Antonacci-Fulton¹⁸, M D McLellan II¹⁸, J M Garrett¹⁸, M A Wiechert¹⁸, T L Miner¹⁸, S Crosby¹⁸, R Ciccone¹⁶, L Willatt⁵, A Rauch¹⁹, M Zenker¹⁹, S Aradhya²⁰, M A Manning²¹, T M Strom²², J Wagenstaller²², A C Krepischi-Santos²³, A M Vianna-Morgante²³, C Rosenberg²³, S M Price⁴, H Stewart⁴, C Shaw-Smith⁵, H G Brunner¹, A O M Wilkie²⁴, J A Veltman¹, O Zuffardi^{16,17}, E E Eichler^{2,25}, and B B A de Vries¹

¹ Department of Human Genetics, Nijmegen Centre for Molecular Life Sciences, Radboud University Nijmegen Medical Centre, Nijmegen, The Netherlands ² Department of Genome Sciences, University of Washington School of Medicine, Seattle, USA ³ Department of Genetic Medicine and Development, University of Geneva Medical School CMU, Geneva, Switzerland ⁴ Department of Clinical Genetics, Oxford Radcliffe Hospitals National Health Service (NHS) Trust, Churchill Hospital, Oxford, UK ⁵ Department of Medical Genetics, Addenbrooke's Hospital, Cambridge, UK ⁶ Oxford Genetics Knowledge Park, The Wellcome Trust Centre for Human Genetics, Churchill Hospital, Oxford, UK ⁷ Department of Genetics, Rouen University Hospital, & Inserm U614, Institute for Biomedical research, University of Rouen, Rouen, France ⁸ Centre de Génétique Humaine, Institut de Pathologie et de Génétique, Gosselies, Belgium ⁹ Department of Medical Genetics, University of Antwerp, Antwerp, Belgium ¹⁰ Antwerp University Hospital, Antwerp, Belgium ¹¹ Hunter Genetics, Hunter New England Area Health Service, Newcastle, NSW, Australia ¹² Genetic Services, McMaster University Medical Centre, Hamilton, Canada ¹³ Department of Pathology and Molecular Medicine, McMaster University, Hamilton, Ontario, Canada ¹⁴ Department of Clinical Genetics, Erasmus Medical Center, Rotterdam, The Netherlands ¹⁵ JC Self Research Institute, Greenwood Genetic Center, Greenwood, USA ¹⁶ Biologia Generale e Genetica Medica, Università di Pavia, Pavia, Italy ¹⁷ Fondazione IRCCS Policlinico San Matteo, Pavia, Italy ¹⁸ Genome Sequencing Center, Washington University School of Medicine, St. Louis, MO, USA ¹⁹ Institute of Human Genetics, University Hospital Erlangen, Friedrich-Alexander University Erlangen-Nuremberg, Erlangen, Germany ²⁰ Department of Pathology, Stanford University School of Medicine, Stanford, California, USA ²¹ Division of Medical Genetics, Department of Pediatrics, Stanford University School of Medicine, Stanford, California, USA ²² Institute of Human Genetics, GSF National Research Center for Environment and Health, Munich-Neuherberg, Germany ²³ Department of Genetics and Evolutionary Biology, Institute of Biosciences, University of São Paulo, São Paulo, Brasil ²⁴ Weatherall Institute of Molecular Medicine, University of Oxford, John Radcliffe Hospital, Oxford, UK ²⁵ Howard Hughes Medical Institute, Seattle, USA

Correspondence to: Dr B B A de Vries, Department of Human Genetics 849, Radboud University Nijmegen Medical Centre, PO Box 9101, 6500 HB Nijmegen, The Netherlands; B.deVries@antrg.umcn.nl.

► Supplementary methods, notes and a table are published online only at <http://jmg.bmj.com/content/vol45/issue11>

Competing interests: None.

Patient consent: Parental consent obtained

Abstract

Background—The chromosome 17q21.31 microdeletion syndrome is a novel genomic disorder that has originally been identified using high resolution genome analyses in patients with unexplained mental retardation.

Aim—We report the molecular and/or clinical characterisation of 22 individuals with the 17q21.31 microdeletion syndrome.

Results—We estimate the prevalence of the syndrome to be 1 in 16 000 and show that it is highly underdiagnosed. Extensive clinical examination reveals that developmental delay, hypotonia, facial dysmorphisms including a long face, a tubular or pear-shaped nose and a bulbous nasal tip, and a friendly/amiable behaviour are the most characteristic features. Other clinically important features include epilepsy, heart defects and kidney/urologic anomalies. Using high resolution oligonucleotide arrays we narrow the 17q21.31 critical region to a 424 kb genomic segment (chr17: 41046729–41470954, hg17) encompassing at least six genes, among which is the gene encoding microtubule associated protein tau (*MAPT*). Mutation screening of *MAPT* in 122 individuals with a phenotype suggestive of 17q21.31 deletion carriers, but who do not carry the recurrent deletion, failed to identify any disease associated variants. In five deletion carriers we identify a <500 bp rearrangement hotspot at the proximal breakpoint contained within an L2 LINE motif and show that in every case examined the parent originating the deletion carries a common 900 kb 17q21.31 inversion polymorphism, indicating that this inversion is a necessary factor for deletion to occur ($p < 10^{-5}$).

Conclusion—Our data establish the 17q21.31 microdeletion syndrome as a clinically and molecularly well recognisable genomic disorder.

Microdeletion syndromes, such as Prader–Willi syndrome, Williams–Beuren syndrome and velo-cardiofacial syndrome, were initially clinically described before the underlying causative genomic copy number rearrangement was identified. The introduction of microarray based technology enabled genome profiling in large cohorts of individuals with mental retardation, resulting in the detection of recurrent microdeletions before their clinical description. The chromosome 17q21.31 microdeletion syndrome (Mendelian Inheritance in Man (MIM) 610443) is a new genomic disorder, characterised by a recurrent 500–650 kb deletion involving chromosome 17q21.31.^{1–3} The recurrent microdeletion was first identified after screening of large heterogeneous cohorts of individuals with mental retardation using high resolution microarray screening technologies.^{1–3}

So far, 14 17q21.31 deletions have been reported in the medical literature,^{1–8} but for the majority of these cases only limited clinical and molecular data were presented. Further cases and extensive clinical descriptions and molecular studies are needed in order to define the phenotype and genotype of the syndrome.

In all 17q21.31 deletions studied to date the breakpoints map to large clusters of flanking low copy repeats (LCRs), suggesting that the deletions are stimulated by non-allelic homologous recombination (NAHR),⁹ which is further supported by the identification of the reciprocal duplication in a girl with severe psychomotor developmental delay and dysmorphic craniofacial features.¹⁰

We previously estimated the minimal critical region that is recurrently deleted in individuals with the 17q21.31 microdeletion syndrome to a 478 kb region,² encompassing six genes, including the corticotropin releasing hormone receptor 1 gene (*CRHR1*) (MIM 122561) and the microtubule associated protein tau gene (*MAPT*) (MIM 157140). The deletion interval is also the site of a common 900 kb inversion polymorphism, associated with two highly divergent haplotypes designated H1 and H2.¹¹ The H2 lineage, representing the 900 kb

inversion polymorphism, is found at a frequency of 20% in the European population.¹¹ So far, the parents of eight affected individuals have been tested and in all cases at least one of the parents carried the H2 haplotype.^{1–3} Therefore, it has been suggested that the offspring of carriers of the H2 lineage are likely to be predisposed to deletion,¹² a phenomenon which has also been described in other microdeletion syndromes, such as Williams–Beuren syndrome, Angelman syndrome, Sotos syndrome,¹³ and the recently defined 15q13.3 microdeletion syndrome.¹⁴

Here we report a collection of 22 individuals with the 17q21.31 microdeletion syndrome. We determine the size of each deletion, allowing detailed delineation of the critical region. We also present the H1/H2 genotypes of the parents, further consolidating the involvement of the H2 haplotype in the deletion. Importantly, based on detailed clinical information of all deletion carriers, the clinical phenotype of the syndrome is characterised and an estimate of the prevalence of the 17q21.31 microdeletion syndrome is obtained.

SUBJECTS AND METHODS

Study subjects

Twenty-two individuals (13 males and 9 females) with a 17q21.31 deletion were included in this study. In three cases the 17q21.31 deletion was suspected, before molecular studies, based on the clinical features of the patient. All 19 other cases had been included in broader cohorts of patients with mental retardation screened for genomic copy number changes. The identification of the 17q21.31 deletion in 11 individuals has previously been reported.^{1–8} The other cases were identified later using different molecular techniques: multiplex ligation dependent probe amplification (MLPA),¹⁵ 16 1 Mb resolution bacterial artificial chromosome (BAC) array comparative genomic hybridisation (CGH),^{6 7} quantitative multiplex polymerase chain reaction (PCR) of short fluorescent fragments (QMPSF),¹⁷ fluorescence in situ hybridisation (FISH), segmental duplication BAC microarray (SD array),¹⁸ chromosomal microarray analysis (CMA) version V6.0 (Baylor),¹⁹ whole genome oligonucleotide array CGH (Agilent Human Genome CGH Microarray Kit 44A and 244A, Agilent Technologies, Santa Clara, California, USA),²⁰ and single nucleotide polymorphism (SNP) microarray (GeneChip Human Mapping 100K, Array Set, Affymetrix, Inc, Santa Clara, California, USA).²¹ Clinical information and facial photographs were obtained from the referring clinicians. All legal representatives of the patients gave informed consent for the molecular studies and publication of clinical data.

In total 122 individuals (66 males and 56 females) with learning and/or speech and language delay who had a phenotype suggestive of the 17q21.3 microdeletion syndrome, based on facial characteristics and hypotonia, but who did not carry the recurrent deletion, were included in the study for sequencing of the *MAPT* gene. Microdeletion of 22q11.2 had been excluded previously in 48 patients.

This study was approved by the Medical Ethics Committee of the Radboud University Nijmegen Medical Centre.

Deletion mapping by high resolution microarray

The 17q21.31 deletions that had not been ascertained by a high resolution microarray platform and for which genomic DNA was available were further characterised. For this study, eight cases were tested using a *NspI* 250K SNP array, which contained 262,264 25-mer oligonucleotides. All SNP array experiments were performed according to manufacturer's protocols (Affymetrix, Inc). Copy number estimates were determined using the CNAG software package (v2.0).²²

In order to fine-map deletion breakpoints we used an ultra-high density custom oligonucleotide array (NimbleGen Systems, Madison, Wisconsin, USA). This array consisted of 385 000 isothermal 45–75 mer probes covering six genomic regions, including 121 041 probes specifically targeted to two 300 kb intervals (chr17:40800000–41100000 and chr17:41550000–41850000, hg17), corresponding to the putative breakpoints of the 17q21.31 microdeletion (mean density, one probe per 5.2 bp). Hybridisations were performed as described previously.^{18 23}

Genotyping for H1 and H2, and parent-of-origin analysis

The presence of a 238 bp deletion in intron 9 of the *MAPT* gene, characteristic for the H2 background,^{11 24 25} and the dinucleotide marker *DG17S142* in intron 9 of the *MAPT* gene¹¹ were used to genotype individuals with the 17q21.31 deletion and the accompanying parental DNA samples. The 238 bp deletion was determined through visualising by gel electrophoresis. PCR reactions were performed using primer sequences GGAAGACGTTCTCACTGATCTG (sense) and AGGAGTCTGGCTTCAGTCTCTC (antisense) as described previously (supplemental methods).²⁴ The dinucleotide marker *DG17S142*, four additional variable number tandem repeats (VNTR) inside the deletion interval, and two flanking short tandem repeats *D17S810* and *D17S920*, were used to study the parental origin of the deletions (supplemental methods). All marker analyses were performed according to standard procedures and the size of the peaks were calculated with GeneMapper (v3.7) software (Applied Biosystems, Foster City, California, USA).

Mutation screening of *MAPT*

One hundred and twenty-two patients who presented with features potentially indicative of a deletion of 17q21.31 were identified from clinical records. Each patient was first tested by MLPA (n = 15) or array CGH using a custom segmental duplication BAC microarray (n = 107),² and found not to carry the recurrent 17q21.31 deletion. A further seven patients with known deletions of 17q21.31^{1 2} were also selected. Primers targeting all exons and splice sites of the *MAPT* gene were designed (supplemental methods) and whole genome amplification of genomic DNA (REPLI-g Kit, Qiagen Inc, Valencia, California, USA) performed to yield sufficient quantities of DNA for sequencing. High throughput bidirectional dideoxynucleotide sequencing of PCR amplified gene products was performed (http://genome.wustl.edu/activity/med_seq/protocols.cgi) at the Genome Sequencing Center (Washington University, St Louis, USA) and Department of Human Genetics Nijmegen (RUNMC, Nijmegen, The Netherlands) using standard protocols. PolyPhred,²⁶ and PolyScan²⁷ software were used to generate an automated report of sequence variations by comparison against reference sequences listed in the NCBI (RefSeq) database. Chromatograms were visually inspected for confirmation of non-synonymous sequence variations.

RESULTS

Identification of novel 17q21.31 deletions

The individuals in whom a 17q21.31 deletion was identified were ordered by age at diagnosis, ranging from 10 months in case 1 to 26 years in case 22 (mean age at diagnosis 9 years). The identification of the 17q21.31 deletion in cases 3, 5, 6, 8, 10, 12, 16, 17, 20–22 have previously been reported.^{1–8} In addition, 11 previously unreported 17q21.31 deletions were ascertained: four novel deletions were found using targeted techniques (MLPA, n = 2; QMPSF, n = 1; FISH, n = 1), two deletions by semi-targeted techniques (SD array, n = 1; CMA V6.0, n = 1), and five deletions were identified using whole genome screening technologies (1 Mb resolution BAC array, n = 1; 100K SNP array, n = 2; Agilent whole genome oligonucleotide array, n = 2). Results of the FISH, MLPA, and QMPSF analyses,

and an example of a chromosome 17 profile obtained using whole genome microarray technology, are shown in fig 1. Parental samples were available for 21 patients, and showed that in each case the deletion had arisen de novo.

Deletion mapping by high resolution microarray analysis

Refinement of the 17q21.31 deletion intervals was conducted using 250K SNP array on DNA samples from eight patients (cases 4, 6, 7, 10, 13–15, 19) and using ultra high density custom oligonucleotide array targeted to the 17q21.31 region in five cases (cases 5, 8, 17, 21, 22). All cases had an overlapping deletion of the 17q21.31 interval.

The SNP array analyses revealed a 458 kb region (chr17:41012856–41470954, hg17) that is recurrently deleted in the eight affected individuals but for which aneuploidy has not been reported in a control cohort of 240 individuals using similar arrays (unpublished results). The proximal breakpoint resided within a 100 kb region in all cases, whereas the distal breakpoint showed more variation. Note that the distal breakpoint is also a site of frequent copy number variation in controls, most likely confounding the mapping and interpretation of this deletion breakpoint.

To define further the breakpoints we characterised the deletion in five different patients using an ultra high density custom oligonucleotide array targeted to the 17q21.31 region, with a mean density of one probe per 5.2 bp. These data show that all five patients have proximal deletion breakpoints that map within an interval of <500-bp (chr17:41046729–41047168, hg17), contained within a single L2 LINE motif (fig 2). Testing of nine control subjects (including carriers of both the H1 and H2 haplotypes) showed that this hybridisation signature was specific to deletion patients and does not represent a copy number variation. In contrast, we were unable to identify a deletion signature at the distal breakpoint which was specific to deletion carriers. On the basis of the location of the L2 LINE element at the proximal side and the copy number variation identified in 240 normal controls at the distal side, we refined the critical region to an 424 kb genomic interval (chr17:41046729–41470954, hg17), relative to the H1 lineage.

Genotyping

We performed genotyping of the H1 and H2 haplotypes using a dinucleotide marker (*DG17S142*) in intron nine of *MAPT* and a characteristic 238 bp deletion in the same intron. 11 24²⁵ In all parents tested (n = 42) at least one of the parents carried the H2 inversion and seven parents were homozygous for the H2 inversion. Genotyping of *D17S810*, *DG17S142* and *D17S920* and four polymorphic loci, designed in the deleted region, showed that the parent-of-origin carried the H2 inversion polymorphism (table 1, fig 3). In total, eight deletions were of maternal origin and 12 were of paternal origin, whereas in two cases marker analysis could not distinguish between the parental chromosomes.

Mutation screening of *MAPT*

A full list of nucleotide changes identified in the 122 non-deletion patients tested is shown in supplemental table 1. Two novel non-synonymous mutations were identified in *MAPT*: (1) an identical heterozygous G>A transition at hg17 position chr17:41443588, resulting in the replacement of valine with isoleucine in an alternatively spliced exon, was detected in two unrelated patients; (2) a heterozygous G>A transition at hg17 position chr17:41457221, resulting in the replacement of glycine with arginine. Screening of seven 17q21.31 deletion patients did not identify any novel variants.

Clinical details of the study subjects

The clinical features of the patients with a 17q21.31 deletion are listed in table 2 while extensive detailed descriptions are provided in the supplemental notes. A summary of the 22 patients is given below.

In the majority of cases (82%) the pregnancy was uneventful. In case 2, however, the pregnancy was characterised by a placental abruption at 7 weeks of gestation, and in cases 9 and 21, the pregnancy was complicated by intrauterine growth retardation. Low birth weight (<3rd centile) was noted in six (27%) individuals. Other birth measurements were within the normal range, although in case 9 microcephaly was noted, and cases 3 and 14 were small for gestational age. Short stature (<3rd centile) was present in four patients (18%). Case 19 was investigated for short stature at 11 years of age, with a borderline low growth hormone measurement on provocation testing.

In all patients global psychomotor developmental delay was noted from an early age. The level of developmental delay varied significantly and was estimated from mild to severe. For example, in case 17 the early motor milestones were delayed, but she started to walk at 19 months, whereas case 10 did not start walking before the age of 4 years. Eleven patients did not have any words before 3 years of age. The speech and language development of case 17 were particularly affected. She did not achieve two-three word sentences until age 6. Case 16 communicated primarily with gestures at 6 years of age, while case 10 showed no understandable speech during the investigation at the age of 6 years 2 months.

Hypotonia with poor sucking and slow feeding was evident in the neonatal period and during childhood in all but one. In at least six patients feeding difficulties required hospitalisation and/or nasogastric tube feeding in the neonatal period.

A history of epilepsy was noted in 50% of the cases. Generalised seizures were present in eight cases (36%). In case 4 unilateral clonic seizures and hypotonia were observed 48 h after birth. A parieto-occipital haemorrhagic infarction on the left side with bilateral ventricular haemorrhage was diagnosed and a large thrombus was identified in the terminal portion of the aorta.

Dysmorphic craniofacial features present in more than half of the individuals included a high/broad forehead, long face, upward slanting palpebral fissures, epicanthic folds, an abnormally formed nose (either “tubular” or “pear” shaped), bulbous nasal tip, large prominent ears, and everted lower lip and, in addition, abnormal hair pigmentation and texture was observed in 12 individuals (55%). The nose can have a high nasal bridge, a broad nasal root, long columella, hypoplastic and/or thick alae nasi. Ophthalmological evaluation showed strabismus in 45% of patients and hypermetropia was present in eight cases (36%). Facial photographs of 20 individuals are provided in fig 4. Facial photographs at different ages, spanning a significant period of time, could be obtained for five individuals (fig 5). The facial characteristics of the patients change with age. In infancy the facial gestalt is mostly characterised by the hypotonia of the face with an open mouth appearance. However, with increasing age there is elongation of the face and broadening of the chin and also the “tubular” or “pear” shape form of the nose becomes more pronounced.

Slender long fingers were reported in 61% of the patients. In addition, hypoplasia of the hand muscles was described in multiple patients (29%) as well as slender lower limbs (41%), dislocation of the hip(s) (27%), and positional deformities of the feet (27%). Case 13 had in-turned feet with significant pronation and had been fitted with an ankle-foot orthosis. He had progressive contractures in his wrists and ankles, and bilateral ulnar deviation of his wrists and deviation of his toes.

Septal heart defects, both atrial septal defects (ASD) and ventricular septal defects (VSD), were found in six cases (27%). Kidney and urologic anomalies were found in seven cases (32%). The latter included vesicoureteric reflux, hydronephrosis, right sided pyelectasis, and a duplex renal system. In case 6 pyelonephritis and bilateral vesicoureteric reflux grade II was detected. In case 14 a renal ultrasound at the age of 5 months showed left hydronephrosis due to a primary pelvi-ureteric junction stenosis. Cryptorchidism was reported in seven out of nine male patients (78%) and deformity of the spine requiring treatment was present in eight patients (36%). The spine anomalies mostly included scoliosis, but lordosis and kyphosis were also reported. In case 13 the scoliosis was progressing rapidly. A brace was required and an x ray suggested that he might be suffering from a mild degree of restrictive lung disease. Magnetic resonance imaging of the spine showed a compression of the upper cervical spinal cord, due to developmental anomaly in the craniocervical junction and upper cervical canal. Imaging of the spine in case 19 showed fusion of the C4/5 vertebrae and two small syringes in the thoracic cord.

In the vast majority of the patients (89%) the behaviour was described as friendly, amiable and cooperative with or without frequent laughing. In contrast to this general pattern, the attention span of case 7 was very short, his interaction with people limited, and he had temper tantrums. Additionally, case 15 showed behaviour problems including hyperactivity alternating with introspection, bad humour, and difficult interaction with other children.

DISCUSSION

The 17q21.31 microdeletion syndrome is a new mental retardation syndrome.^{1–3} We performed an extensive clinical and molecular characterisation of 22 patients. In the majority of cases the microdeletion was identified after microarray based genomic copy number profiling of large heterogeneous cohorts of individuals with mental retardation. In only three cases was the 17q21.31 deletion suspected, based on the clinical features of the patient (cases 7, 8, 18). The remaining 19 cases had been included in broader cohorts including a total of 2978 patients with mental retardation. Therefore, the prevalence can be estimated to be in the order of 0.64% (95% confidence interval 0.35% to 0.93%) of the individuals with unexplained mental retardation. Mental retardation occurs in approximately 2–3% of the general population,^{28,29} in approximately 50% of which a diagnosis cannot be made.³⁰ Therefore, we estimate the prevalence of the 17q21.31 deletion syndrome as approximately 1 in 16 000 individuals. For example, for the Netherlands, this implies that ~12 affected individuals are born each year. So far, only a total of four cases from the Netherlands have been reported, indicating that the 17q21.31 deletion syndrome in individuals with mental retardation is currently highly underdiagnosed.

The 17q21.31 region contains multiple copy number variations (CNVs) that are also found in the general population (<http://projects.tcag.ca/variation/>), complicating the definition of the precise deletion breakpoints. Based on 250K SNP array analyses we could delineate a minimal 424 kb critical region (41046729–41470954 Mb, hg17) that is recurrently deleted in patients, but not in controls. Further refinement of five deletions using the ultra high density oligonucleotide arrays (mean density, one probe per 5.2 bp) revealed that the proximal breakpoint in all five tested patients is contained within an interval of <500 bp within an L2 LINE motif, representing a possible hotspot for NAHR. Even with the ultra high density oligonucleotide arrays it is not possible to ascertain the distal breakpoint accurately. The deletion seems to extend more distally in some patients tested, although this might reflect the extreme copy number polymorphism at the distal side, rather than variation in the breakpoints. Future deep sequencing unravelling the H2 sequence and a putative common distal breakpoint, which is currently unknown, will be of major importance to prove NAHR as the underlying mechanism.

The 424 kb critical region encompasses at least six genes, *C17orf69*, *CRHR1* (MIM 122561), *IMP5* (MIM 608284), *MAPT* (MIM 157140), *STH* (MIM 607067), and *KIAA1267*. Haploinsufficiency of one or more of these genes might underlie the phenotype seen in the 17q21.31 deletion syndrome. The *MAPT* is of particular interest as the gene is highly expressed in brain and is involved in several neurodegenerative diseases, such as frontotemporal dementia with parkinsonism linked to chromosome 17 (FTDP-17),³¹ 32 progressive supranuclear palsy,³³ and corticobasal degeneration and Alzheimer's disease.²⁵ Therefore, we performed mutation analysis of the entire coding sequence of the *MAPT* (MIM 157140) gene in 122 patients targeted for testing on the basis of clinical features but lacking the characteristic deletion.

Two non-synonymous mutations of uncertain significance were found in this cohort. The first of these, resulting in the replacement of valine with isoleucine, was identified in two unrelated patients. Although not previously reported, the presence of this same variant in two unrelated individuals suggests that it likely represents a rare polymorphism. Furthermore, the amino acids valine and isoleucine are structurally and biochemically quite similar, suggesting that this substitution is unlikely to significantly affect protein structure. The second variant identified results in the replacement of glycine with arginine at amino acid 389. This same amino acid variant has been previously reported in two families with Pick's disease (frontotemporal dementia, MIM 172700).³⁴ 35 However, this variant only has mild effects on *MAPT* function and in neither of these reports did the mutation segregate with the neurological phenotype, suggesting that this may also represent a rare polymorphism. Although our extensive efforts to identify pathogenic mutations in *MAPT* did not uncover any variants that seem likely to be responsible for the phenotype, no firm conclusions can be made, because parental DNA samples were unavailable for further testing. These data suggest that the 17q21.31 microdeletion syndrome is not caused solely by haploinsufficiency of *MAPT*, although single exon deletions could have been missed in our analyses. We speculate that the phenotype of the 17q21.31 deletion syndrome instead results from haploinsufficiency for one or more other elements within the critical region, perhaps representing a contiguous gene syndrome. This is in contrast to some other genomic disorders in which the associated phenotypes largely or completely result from haploinsufficiency for single genes—for example, the *RAI1* gene in Smith–Magenis syndrome,³⁶ and the *UBE3A* gene in Angelman syndrome.³⁷

The 17q21.31 genomic interval contains a common 900 kb inversion polymorphism, resulting in a haplotype block with two highly divergent haplotypes designated H1 and H2.¹¹ Genotyping the parents with respect to the H1/H2 lineage showed that in each trio tested the parent originating the deleted chromosome 17 carries at least one H2 chromosome, which is significantly different from the ~20% frequency of the inversion in the European population reported by Stefansson *et al*¹¹ ($p < 10^{-5}$, Pearson's χ^2 test). In total, eight deletions were of maternal origin and 12 were of paternal origin, indicating that there is no significant bias for parental origin of the deletion. The H2 haplotype results in a genomic structure with directly oriented LCR subunits that can undergo a deletion rearrangement via NAHR,³⁸ which suggests that the inversion found in all parents of origin may be a necessary factor for the deletion to occur. Although the H2 allele is a risk factor, the frequency of de novo 17q21.31 microdeletions in carriers of the H2 inversion is low; therefore, other as yet poorly understood factors are likely to be important in the generation of the deletion. Moreover, all deletions detected to date are sporadic. Therefore, assuming the H2 allele is requisite for the deletion, based on current knowledge, the occurrence risk for the 17q21.31 deletion in a carrier of the H2 inversion polymorphism might be considered to be in the order of 1/3200 in European populations. However, from a genetic counselling perspective, the recurrence risk in a family of an affected individual could be higher, because of other factors such as germline mosaicism.

Our analysis of 22 patients with the 17q21.31 deletion syndrome shows a clinically recognisable phenotype. Common features present in more than 50% of the patients that should prompt consideration of this diagnosis include developmental delay, childhood hypotonia, abnormal hair colour/texture, high/broad forehead, long face, upward slanting palpebral fissures, epicanthal folds, tubular or pear shaped nose, bulbous nasal tip, large/prominent ears, slender/long fingers, cryptorchidism, and a friendly/amiable behaviour. Other common features that need special medical attention are epilepsy, hypermetropia, pectus excavatum, congenital heart defects (VSD/ASD), kidney and urologic anomalies, dislocation of the hip(s), positional deformities of the feet, and spinal deformities. Hypotonia of the face is most obvious in infancy, with an open mouth appearance, everted lower lip and a protruding tongue. The typical nose and other facial characteristics can be observed from birth. However, with increasing age, there is a change in phenotype, which is also seen in other mental retardation syndromes, such as Mowat–Wilson syndrome,³⁹ Noonan syndrome,⁴⁰ and Williams–Beuren syndrome.⁴¹

In conclusion, the molecular and/or clinical characterisation of 22 individuals with the 17q21.31 microdeletion syndrome defines the phenotypic features associated with this novel syndrome and provides further insight into the critical region and rearrangement hotspot. Our data further support the hypothesis that the common 17q21.31 inversion polymorphism in the parent-of-origin is a necessary factor for the deletion to occur.

Supplementary Material

Refer to Web version on PubMed Central for supplementary material.

Acknowledgments

We thank all the parents and children who have participated in this study. We would also like to acknowledge Dr Regina Regan and Mrs Cheryl Guiver (Oxford Genetics Knowledge Park), and Cindy Skinner for their assistance.

Funding: This work was supported by grants from the AnEuploidy project (LSHG-CT-2006-037627) supported by the European commission under FP6, and supplemental grants from the Netherlands Organisation for Health Research and Development (ZonMW 907-00-058, ZonMW 917-86-319 to BBAdV, ZonMW 920-03-338 to DAK, ZonMW 912-04-047 to HGB and JAV), Hersenstichting Nederland (BBAdV), South Carolina Department of Disabilities and Special Needs (CES) and the National Institutes of Health (NIH) (EEE, HD043569). EEE is an Investigator of the Howard Hughes Medical Institute.

REFERENCES

1. Koolen DA, Vissers LE, Pfundt R, de Leeuw N, Knight SJ, Regan R, Kooy RF, Reyniers E, Romano C, Fichera M, Schinzel A, Baumer A, Anderlid BM, Schoumans J, Knoers NV, Geurts van Kessel A, Sistermans EA, Veltman JA, Brunner HG, de Vries BB. A new chromosome 17q21.31 microdeletion syndrome associated with a common inversion polymorphism. *Nat Genet.* 2006; 38:999–1001. [PubMed: 16906164]
2. Sharp AJ, Hansen S, Selzer RR, Cheng Z, Regan R, Hurst JA, Stewart H, Price SM, Blair E, Hennekam RC, Fitzpatrick CA, Segreaves R, Richmond TA, Guiver C, Albertson DG, Pinkel D, Eis PS, Schwartz S, Knight SJ, Eichler EE. Discovery of previously unidentified genomic disorders from the duplication architecture of the human genome. *Nat Genet.* 2006; 38:1038–42. [PubMed: 16906162]
3. Shaw-Smith C, Pittman AM, Willatt L, Martin H, Rickman L, Gribble S, Curley R, Cumming S, Dunn C, Kalaitzopoulos D, Porter K, Prigmore E, Krepischi-Santos AC, Varela MC, Koiffmann CP, Lees AJ, Rosenberg C, Firth HV, de SR, Carter NP. Microdeletion encompassing MAPT at chromosome 17q21.3 is associated with developmental delay and learning disability. *Nat Genet.* 2006; 38:1032–7. [PubMed: 16906163]

4. Aradhya S, Manning MA, Splendore A, Cherry AM. Whole-genome array-CGH identifies novel contiguous gene deletions and duplications associated with developmental delay, mental retardation, and dysmorphic features. *Am J Med Genet A*. 2007; 143:1431–41. [PubMed: 17568414]
5. Hoyer J, Dreweke A, Becker C, Gohring I, Thiel CT, Peippo MM, Rauch R, Hofbeck M, Trautmann U, Zweier C, Zenker M, Huffmeier U, Kraus C, Ekici AB, Ruschendorf F, Nurnberg P, Reis A, Rauch A. Molecular karyotyping in patients with mental retardation using 100 K SNP arrays. *J Med Genet*. 2007; 44:629–36. [PubMed: 17601928]
6. Shaw-Smith C, Redon R, Rickman L, Rio M, Willatt L, Fiegler H, Firth H, Sanlaville D, Winter R, Colleaux L, Bobrow M, Carter NP. Microarray based comparative genomic hybridisation (array-CGH) detects submicroscopic chromosomal deletions and duplications in patients with learning disability/mental retardation and dysmorphic features. *J Med Genet*. 2004; 41:241–8. [PubMed: 15060094]
7. Varela MC, Krepischi-Santos AC, Paz JA, Knijnenburg J, Suzhai K, Rosenberg C, Koiffmann CP. A 17q21.31 microdeletion encompassing the MAPT gene in a mentally impaired patient. *Cytogenet Genome Res*. 2006; 114:89–92. [PubMed: 16717456]
8. Wagenstaller J, Spranger S, Lorenz-Depiereux B, Kazmierczak B, Nathrath M, Wahl D, Heye B, Glaser D, Liebscher V, Meitinger T, Strom TM. Copy-number variations measured by single-nucleotide-polymorphism oligonucleotide arrays in patients with mental retardation. *Am J Hum Genet*. 2007; 81:768–79. [PubMed: 17847001]
9. Stankiewicz P, Lupski JR. Genome architecture, rearrangements and genomic disorders. *Trends Genet*. 2002; 18:74–82. [PubMed: 11818139]
10. Kirchhoff M, Bisgaard AM, Duno M, Hansen FJ, Schwartz M. A 17q21.31 microduplication, reciprocal to the newly described 17q21.31 microdeletion, in a girl with severe psychomotor developmental delay and dysmorphic craniofacial features. *Eur J Med Genet*. 2007; 50:256–63. [PubMed: 17576104]
11. Stefansson H, Helgason A, Thorleifsson G, Steinthorsdottir V, Masson G, Barnard J, Baker A, Jonasdottir A, Ingason A, Gudnadottir VG, Desnica N, Hicks A, Gylfason A, Gudbjartsson DF, Jonsdottir GM, Sainz J, Agnarsson K, Birgisdottir B, Ghosh S, Olafsdottir A, Cazier JB, Kristjansson K, Frigge ML, Thorgeirsson TE, Gulcher JR, Kong A, Stefansson K. A common inversion under selection in Europeans. *Nat Genet*. 2005; 37:129–37. [PubMed: 15654335]
12. Lupski JR. Genomic disorders: structural features of the genome can lead to DNA rearrangements and human disease traits. *Trends Genet*. 1998; 14:417–22. [PubMed: 9820031]
13. Feuk L, Carson AR, Scherer SW. Structural variation in the human genome. *Nat Rev Genet*. 2006; 7:85–97. [PubMed: 16418744]
14. Sharp AJ, Mefford HC, Li K, Baker C, Skinner C, Stevenson RE, Schroer RJ, Novara F, De GM, Ciccone R, Broomer A, Casuga I, Wang Y, Xiao C, Barbacioru C, Gimelli G, Bernardina BD, Torniero C, Giorda R, Regan R, Murday V, Mansour S, Fichera M, Castiglia L, Failla P, Ventura M, Jiang Z, Cooper GM, Knight SJ, Romano C, Zuffardi O, Chen C, Schwartz CE, Eichler EE. A recurrent 15q13.3 microdeletion syndrome associated with mental retardation and seizures. *Nat Genet*. 2008; 40:322–8. [PubMed: 18278044]
15. Schouten JP, McElgunn CJ, Waaijer R, Zwijnenburg D, Diepvens F, Pals G. Relative quantification of 40 nucleic acid sequences by multiplex ligation-dependent probe amplification. *Nucleic Acids Res*. 2002; 30:e57. [PubMed: 12060695]
16. White SJ, Vink GR, Kriek M, Wuyts W, Schouten J, Bakker B, Breuning MH, den Dunnen JT. Two-color multiplex ligation-dependent probe amplification: detecting genomic rearrangements in hereditary multiple exostoses. *Hum Mutat*. 2004; 24:86–92. [PubMed: 15221792]
17. Saugier-Verber P, Goldenberg A, Drouin-Garraud V, de La RC, Layet V, Drouot N, Le MN, Gilbert-Du-Ssardier B, Joly-Helas G, Moirrot H, Rossi A, Tosi M, Frebourg T. Simple detection of genomic microdeletions and microduplications using QMPSF in patients with idiopathic mental retardation. *Eur J Hum Genet*. 2006; 14:1009–17. [PubMed: 16773131]
18. Sharp AJ, Locke DP, McGrath SD, Cheng Z, Bailey JA, Vallente RU, Pertz LM, Clark RA, Schwartz S, Segraves R, Oseroff VV, Albertson DG, Pinkel D, Eichler EE. Segmental duplications and copy-number variation in the human genome. *Am J Hum Genet*. 2005; 77:78–88. [PubMed: 15918152]

19. Cheung SW, Shaw CA, Yu W, Li J, Ou Z, Patel A, Yatsenko SA, Cooper ML, Furman P, Stankiewicz P, Lupski JR, Chinault AC, Beaudet AL. Development and validation of a CGH microarray for clinical cytogenetic diagnosis. *Genet Med*. 2005; 7:422–32. [PubMed: 16024975]
20. Slater HR, Bailey DK, Ren H, Cao M, Bell K, Nasioulas S, Henke R, Choo KH, Kennedy GC. High-resolution identification of chromosomal abnormalities using oligonucleotide arrays containing 116,204 SNPs. *Am J Hum Genet*. 2005; 77:709–26. [PubMed: 16252233]
21. Huang J, Wei W, Zhang J, Liu G, Bignell GR, Stratton MR, Futreal PA, Wooster R, Jones KW, Shaperro MH. Whole genome DNA copy number changes identified by high density oligonucleotide arrays. *Hum Genomics*. 2004; 1:287–99. [PubMed: 15588488]
22. Nannya Y, Sanada M, Nakazaki K, Hosoya N, Wang L, Hangaishi A, Kurokawa M, Chiba S, Bailey DK, Kennedy GC, Ogawa S. A robust algorithm for copy number detection using high-density oligonucleotide single nucleotide polymorphism genotyping arrays. *Cancer Res*. 2005; 65:6071–9. [PubMed: 16024607]
23. Selzer RR, Richmond TA, Pofahl NJ, Green RD, Eis PS, Nair P, Brothman AR, Stallings RL. Analysis of chromosome breakpoints in neuroblastoma at sub-kilobase resolution using fine-tiling oligonucleotide array CGH. *Genes Chromosomes Cancer*. 2005; 44:305–19. [PubMed: 16075461]
24. Baker M, Litvan I, Houlden H, Adamson J, Dickson D, Perez-Tur J, Hardy J, Lynch T, Bigio E, Hutton M. Association of an extended haplotype in the tau gene with progressive supranuclear palsy. *Hum Mol Genet*. 1999; 8:711–5. [PubMed: 10072441]
25. Myers AJ, Kaleem M, Marlowe L, Pittman AM, Lees AJ, Fung HC, Duckworth J, Leung D, Gibson A, Morris CM, de SR, Hardy J. The H1c haplotype at the MAPT locus is associated with Alzheimer's disease. *Hum Mol Genet*. 2005; 14:2399–404. [PubMed: 16000317]
26. Nickerson DA, Tobe VO, Taylor SL. PolyPhred: automating the detection and genotyping of single nucleotide substitutions using fluorescence-based resequencing. *Nucleic Acids Res*. 1997; 25:2745–51. [PubMed: 9207020]
27. Chen K, McLellan MD, Ding L, Wendl MC, Kasai Y, Wilson RK, Mardis ER. PolyScan: an automatic indel and SNP detection approach to the analysis of human resequencing data. *Genome Res*. 2007; 17:659–66. [PubMed: 17416743]
28. Leonard H, Wen X. The epidemiology of mental retardation: challenges and opportunities in the new millennium. *Ment Retard Dev Disabil Res Rev*. 2002; 8:117–34. [PubMed: 12216056]
29. Roeleveld N, Zielhuis GA, Gabreels F. The prevalence of mental retardation: a critical review of recent literature. *Dev Med Child Neurol*. 1997; 39:125–32. [PubMed: 9062428]
30. de Vries BB, van den Ouweland AM, Mohkamsing S, Duivenvoorden HJ, Mol E, Gelsema K, van RM, Halley DJ, Sandkuijl LA, Oostra BA, Tibben A, Niermeijer MF. Screening and diagnosis for the fragile X syndrome among the mentally retarded: an epidemiological and psychological survey. Collaborative Fragile X Study Group. *Am J Hum Genet*. 1997; 61:660–7. [PubMed: 9326332]
31. D'Souza I, Poorkaj P, Hong M, Nochlin D, Lee VM, Bird TD, Schellenberg GD. Missense and silent tau gene mutations cause frontotemporal dementia with parkinsonism-chromosome 17 type, by affecting multiple alternative RNA splicing regulatory elements. *Proc Natl Acad Sci U S A*. 1999; 96:5598–603. [PubMed: 10318930]
32. Hutton M, Lendon CL, Rizzu P, Baker M, Froelich S, Houlden H, Pickering-Brown S, Chakraverty S, Isaacs A, Grover A, Hackett J, Adamson J, Lincoln S, Dickson D, Davies P, Petersen RC, Stevens M, de GE, Wauters E, van BJ, Hillebrand M, Joosse M, Kwon JM, Nowotny P, Che LK, Norton J, Morris JC, Reed LA, Trojanowski J, Basun H, Lannfelt L, Neystat M, Fahn S, Dark F, Tannenberg T, Dodd PR, Hayward N, Kwok JB, Schofield PR, Andreadis A, Snowden J, Craufurd D, Neary D, Owen F, Oostra BA, Hardy J, Goate A, van SJ, Mann D, Lynch T, Heutink P. Association of missense and 59-splice-site mutations in tau with the inherited dementia FTDP-17. *Nature*. 1998; 393:702–5. [PubMed: 9641683]
33. Pittman AM, Myers AJ, Abou-Sleiman P, Fung HC, Kaleem M, Marlowe L, Duckworth J, Leung D, Williams D, Kilford L, Thomas N, Morris CM, Dickson D, Wood NW, Hardy J, Lees AJ, de SR. Linkage disequilibrium fine mapping and haplotype association analysis of the tau gene in progressive supranuclear palsy and corticobasal degeneration. *J Med Genet*. 2005; 42:837–46. [PubMed: 15792962]

34. Murrell JR, Spillantini MG, Zolo P, Guazzelli M, Smith MJ, Hasegawa M, Redi F, Crowther RA, Pietrini P, Ghetti B, Goedert M. Tau gene mutation G389R causes a tauopathy with abundant pick body-like inclusions and axonal deposits. *J Neuropathol Exp Neurol*. 1999; 58:1207–26. [PubMed: 10604746]
35. Pickering-Brown S, Baker M, Yen SH, Liu WK, Hasegawa M, Cairns N, Lantos PL, Rossor M, Iwatsubo T, Davies Y, Allsop D, Furlong R, Owen F, Hardy J, Mann D, Hutton M. Pick's disease is associated with mutations in the tau gene. *Ann Neurol*. 2000; 48:859–67. [PubMed: 11117542]
36. Slager RE, Newton TL, Vlangos CN, Finucane B, Elsea SH. Mutations in RAI1 associated with Smith-Magenis syndrome. *Nat Genet*. 2003; 33:466–8. [PubMed: 12652298]
37. Kishino T, Lalonde M, Wagstaff J. UBE3A/E6-AP mutations cause Angelman syndrome. *Nat Genet*. 1997; 15:70–3. [PubMed: 8988171]
38. Lupski JR. Genome structural variation and sporadic disease traits. *Nat Genet*. 2006; 38:974–6. [PubMed: 16941003]
39. Adam MP, Schelley S, Gallagher R, Brady AN, Barr K, Blumberg B, Shieh JT, Graham J, Slavotinek A, Martin M, Keppler-Noreuil K, Storm AL, Hudgins L. Clinical features and management issues in Mowat-Wilson syndrome. *Am J Med Genet A*. 2006; 140:2730–41. [PubMed: 17103451]
40. Shaw AC, Kalidas K, Crosby AH, Jeffery S, Patton MA. The natural history of Noonan syndrome: a long-term follow-up study. *Arch Dis Child*. 2007; 92:128–32. [PubMed: 16990350]
41. Pober BR, Morris CA. Diagnosis and management of medical problems in adults with Williams-Beuren syndrome. *Am J Med Genet C Semin Med Genet*. 2007; 145:280–90. [PubMed: 17639596]

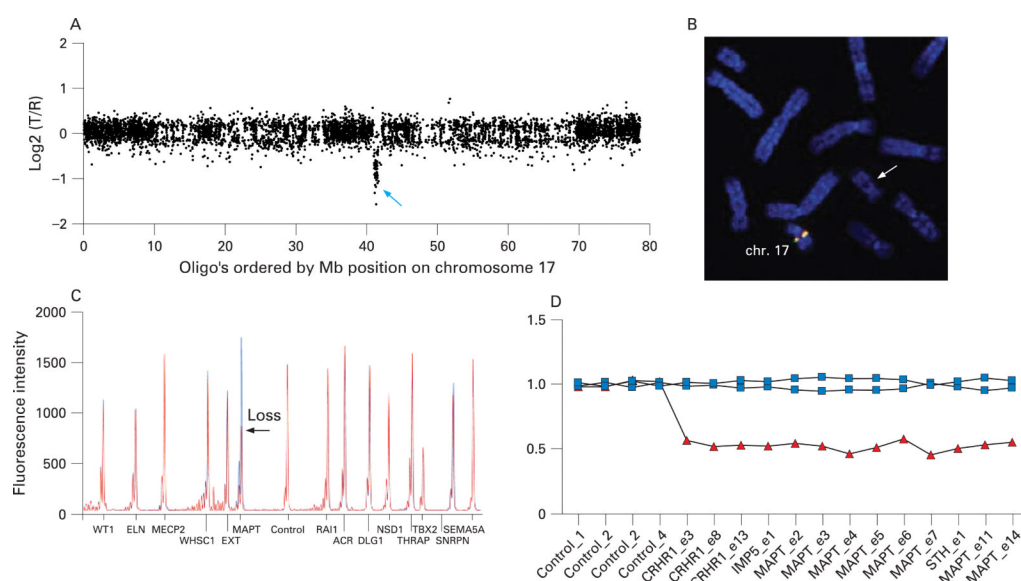


Figure 1.

Identification of the 17q21.31 deletions. (A) Chromosome 17 plot of case 1 obtained by whole genome oligonucleotide array (Agilent Human Genome CGH Microarray Kit 244A, Agilent Technologies). Chromosome 17 is represented by 5881 coding and non-coding human sequences (indicated by circles representing the log₂-transformed and normalised test: reference intensity ratios ((log₂(T/R))), ordered from pter to qter for chromosome 17, in hg17 (NCBI build 35, May 2004). The arrow indicates the presence of a copy number loss at 17q21.31. (B) FISH analysis on metaphase spreads of case 7, using the BAC clones CTD-2324N3 (red) and RP11-413P22 (green) which are both located within the deleted 17q21.31 region. The patient shows only one signal for CTD-2324N3 and RP11-413P22, indicating an aberrant chromosome 17 (arrow). (C) Detection of a heterozygous *MAPT* deletion in case 4 using the microdeletion/microduplication QMPSF assay. The electropherogram of the patient (in red) was superimposed on that of a normal female control (in blue) by adjusting to the same level the peaks obtained for the control amplicon. The Y axis displays fluorescence intensity, and the X axis indicates the genes tested. The heterozygous deletion is detected by a 50% reduction of the *MAPT* peak compared to the normal control (arrow). (D) MLPA results for case 19 (triangles) and two healthy controls (rectangles), showing a deletion of all 13 probes in the *CRHR1*, *IMP5*, *MAPT*, and *STH* genes within the 17q21.31 genomic interval.

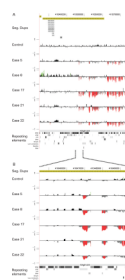


Figure 2.

Ultra high resolution oligonucleotide array analysis. Results of ultra high resolution oligonucleotide array analysis of the 17q21.31 microdeletion proximal breakpoint (mean probe density 1 probe/5.2 bp). (A) Data from a 50 kb region (chr17:41025000–41075000, hg17) in five unrelated 17q21.31 deletion patients and one control. In each deletion, the proximal breakpoint occurred in a segmental duplication of length, 34.2 kb, identity 98.7% (chr17:41026709–41060948). (B) Zoomed view showing a 5 kb region (chr17:41044500–41049500). All five patients have breakpoints which are indistinguishable, mapping to within an interval of <500 bp contained within an L2 LINE motif. The highly variable dynamic response of certain probes in this region to report the deletion is likely a result of their different sequence properties (38). For each individual, deviations of probe log₂ ratios from zero are depicted by grey/black bars, with those exceeding a threshold of 1.5 standard deviations from the mean probe ratio coloured green and red to represent relative gains and losses, respectively. Tracks above each plot indicate segmental duplications (grey/yellow bars represent duplicons with 90–98%/98–99% sequence identity, respectively).

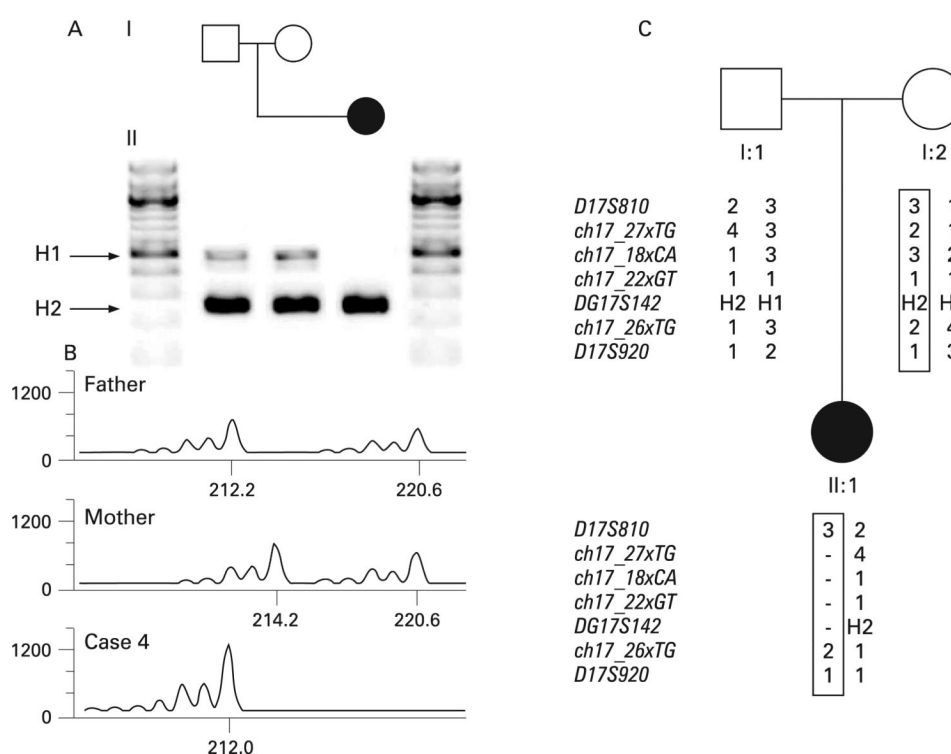


Figure 3.

Genotyping H1 and H2 on 17q21.31 and parent-of-origin analysis. Genotyping results in the family of case 4. (A) PCR results of a 238 bp deletion in intron 9 of *MAPT* indicative for the H2 lineage. Both parents are H1/H2 heterozygotes. Far left and far right: 100 bp marker lanes. (B) PCR results of a VNTR (chr17: 41,224,986–41,225,022) within the deleted 17q21.31 region excluding a paternal origin. (C) Reconstruction of genomic markers located within and outside the deleted 17q21.31 segment shows the maternal origin of the deletion. Dinucleotide marker *DG17S142* is indicative for the H2 lineage (11).



Figure 4.

Faces of individuals with a 17q21.31 deletion. Facial photographs of case 1, at age 10 months; case 2, at age 1 year; case 3, at age 2 years; case 4, at age 3 years; case 5, at age 3 years; case 6, at age 3 years 5 months; case 7, at age 3 years 8 months; case 8, at age 3 years; case 9, at age 5 years 8 months; case 10 at age 5 years; case 11, at age 3 years 9 months; case 12, at age 8 years 6 months; case 14, at age 13 years; case 15, at age 14 years; case 16, at 14 years; case 18, at 16 years; case 19, at 13 years; case 20, at age 18 years; case 21, at 17 years and case 22, at age 26 years.



Figure 5. Facial photographs at different ages (<1, 1-4, 5-6, 7-12, and >12 years of age). Note that the facial characteristics of the patients change with age. With increasing age there is elongation of the face and broadening of the chin and also the “tubular” or “pear” shape form of the nose becomes more pronounced.

Table 1

Genotyping results

Case	Father	Mother	Parent-of-origin
1	H1/H2	H1/H2	Maternal
2	H1/H1	H1/H2	Maternal
3	H1/H2	H1/H1	Paternal
4	H1/H2	H1/H2	Maternal
5	H1/H2	H1/H1	Paternal
6	H2/H2	H1/H1	Paternal
7	H1/H2	H1/H2	Paternal
8	H2/H2	H1/H1	Paternal
9	H1/H2	H1/H2	Paternal
10	H1/H2	H1/H2	Maternal
11	H2/H2	H1/H1	Paternal
12	H2/H2	H1/H2	–
13	H1/H1	H1/H2	Maternal
14	H1/H2	H1/H1	Paternal
15	H1/H2	NA	Paternal
16	H1/H2	H1/H1	Paternal
17	H1/H2	H1/H1	Paternal
18	NA	H1/H2	–
19	H1/H1	H2/H2	Maternal
20	H1/H2	H2/H2	Paternal
21	H1/H1	H1/H2	Maternal
22	H1/H1	H2/H2	Maternal

The parent-of-origin was determined by genotyping for H1/H2 status as well as by other polymorphic markers in the region. For cases 6, 8, 11, and 16 the parent-of-origin was inferred by SNP array data and extrapolation from child and parental alleles. NA, DNA sample not available; –, marker analyses could not distinguish between the paternal or maternal origin of the deletion.

Table 2

Clinical features of the patients with a 17q21.31 microdeletion

Case	1	2	3	4	5	6	7	8	9	10	11	12	13	14	15	16	17	18	19	20	21	22	Total (%)
Current age (years)	10/12	1	3	3	3	3 ^{5/12}	3 ^{6/12}	4	5 ^{8/12}	6	6	13	13	13 ^{9/12}	14	14	15	17	18	20	21	22	26
Gender	M	M	F	F	F	F	M	F	F	F	F	F	M	M	M	F	F	F	M	M	F	M	
Growth parameters																							
Low birth weight	-	-	-	-	-	+	-	-	-	-	-	+	-	-	-	-	+	+	-	+	+	-	27
Microcephaly	-	+	-	-	-	-	-	-	-	-	-	-	-	-	-	-	-	-	-	-	-	-	5
Short stature	-	-	-	-	-	-	-	-	-	+	-	-	-	-	+	+	-	-	-	+	-	-	18
Developmental delay	+	+	+	+	+	+	++	+	++	+	+	++	++	+	+	++	+	+	+	++	+	+	100
Hypotonia (childhood)	+	++	+	++	++	+	+	-	+	++	+	+	+	++	++	+	+	+	+	+	+	++	96
Epilepsy	-	-	+	-	-	+	-	+	-	+	-	+	-	-	-	+	+	+	+	+	+	-	50
Facial features																							
Abnormal hair colour/texture	+	+	+	+	+	+	+	+	+	+	-	-	-	-	+	-	+	+	-	-	-	-	55
High/broad forehead	+	-	+	+	+	+	+	-	+	+	-	+	+	+	-	+	-	-	+	+	-	+	68
Long face	-	+	-	-	+	-	+	-	+	+	-	+	+	+	+	+	-	+	-	+	+	+	74
Hypermetropia	-	-	+	-	-	+	-	+	-	-	-	-	-	+	-	+	+	-	-	+	+	-	36
Nasal speech	na	na	na	na	na	na	na	-	+	na	+	+	+	+	-	-	+	-	-	-	+	+	50
Pale irides	-	-	-	-	+	-	+	+	-	+	-	+	-	+	-	+	+	+	-	-	+	-	45
Strabismus	+	-	+	-	+	+	+	+	+	-	-	-	-	-	-	+	+	-	-	-	-	+	45
Upward slant	+	+	+	-	+	+	+	+	+	+	+	+	-	+	-	+	-	+	-	-	+	-	68
Blepharophimosis	-	-	+	-	+	-	-	+	-	-	-	-	-	+	-	-	+	+	-	-	+	+	36
Ptosis	-	-	+	-	+	+	+	+	+	+	-	-	-	+	-	+	-	-	-	-	+	+	50
Epicanthal folds	+	+	+	+	+	+	+	+	+	+	+	-	-	+	-	+	+	+	-	-	-	-	68
Tubular or pear shaped nose	+	+	-	+	+	-	+	+	+	+	-	-	+	+	+	+	+	+	+	+	+	+	82
Bulbous nasal tip	+	+	+	+	+	-	+	+	+	+	+	+	+	+	+	+	+	+	+	+	+	+	95
Large/prominent ears	+	-	-	+	+	+	-	+	+	+	-	-	+	+	+	-	+	-	-	-	+	+	59
Narrow/high palate	+	+	-	-	+	-	-	-	+	-	-	-	+	+	+	-	-	+	+	+	-	+	50
Cleft palate	-	-	-	-	-	-	-	-	-	-	-	+	+	-	-	-	-	-	-	-	-	-	9
Broad chin	-	-	-	-	+	-	+	-	-	+	+	-	+	-	-	+	-	+	-	-	+	+	42
Extremities																							
Narrow hands	+	+	-	-	+	-	-	+	+	-	-	-	-	-	-	-	-	-	-	-	+	-	28

Case	1	2	3	4	5	6	7	8	9	10	11	12	13	14	15	16	17	18	19	20	21	22	Total (%)
Slender/long fingers	+	+	-	-	+		-		+	+	+	-	-		-	-	+	+	+	+	+	+	61
Hypoplasia hand muscles	-	+	-	-	-		-		+	-	-	-	+	-	+			-	-	-	+	-	29
Dislocation of the hip(s)	-	-	+	-	+	-	-	+	-	-	-	+	+	-	+	-	-	-	-	-	-	-	27
Slender lower limbs	+	-	-	-	+		-		+	+	-	-	+		-	-	-	-	+	-	+	-	41
Positional deformity feet	-	-	-	-	-	-	-	-	+	-	+	-	+	+	-	-	-	-	-	-	+	+	27
Other congenital malformations																							
Heart defects (VSD/ASD)	+	+	+	-	-	-	+	+	-	+	-	-	-	-	-	-	-	-	-	-	-	-	27
Kidney and urologic anomalies	-	-	-	+	-	+	-	-	-	+	-	+	+	+	+	-	-	+	-	-	-	-	32
Cryptorchidism	+	+					+				-	-	+	+	-	-				+	+	+	78
Scoliosis/kyphosis	-	-	+	-	-	-	-	-	-	-	-	-	+	+	+	-	-	+	-	+	+	+	36
Pectus excavatum	+	+	-	-	+	-	-	-	-	-	-	+	-	-	-	-	-	-	-	+	-	-	23
Ventriculomegaly	+	-	-	-	+		-	-	-	-	-	-	+	-	-	-	-	-	+	-	+	+	38
Friendly/amiab behaviour	+	+	+	+	+	+	-	§	**	+	+	+	+	+	-	+	+	+	+	+	+	+	89
Other clinical features			*	†	‡			§	¶		††	‡‡	§§; ¶¶; ***	†††	§; ‡‡‡		+	§§§; ¶¶¶; ****	‡‡‡; ****	¶¶	+	+	‡‡‡‡

ASD, atrial septal defects; VSD, ventricular septal defects.
 +, feature present; ++, feature severe; -, absent; na, not assessable.
 * Persistent ductus arteriosus
 † neonatal haemorrhagic parenchymal infarction, aortic thrombus
 ‡ periventricular white matter lesions
 § behavioural problems
 ¶ metopic ridge
 ** hypothyroidism
 †† sagittal synostosis
 ‡‡ bilateral cataract
 §§ ulnar deviation of wrists
 ¶¶ contractures
 **** compression of upper cervical spinal cord

^{†††} severe ichthyosis
^{†††} agenesis of corpus callosum
^{§§§} pyloric stenosis
^{¶¶¶} tracheomalacia
^{****} c4/5 fused vertebrae
^{††††} communicating hydrocephalus.