



Article
scientifique

Revue de la
littérature

2009

Published
version

Open
Access

This is the published version of the publication, made available in accordance with the publisher's policy.

Initial clinical manifestations of Parkinson's disease: features and pathophysiological mechanisms

Rodriguez-Oroz, Maria; Jahanshahi, Marjan; Krack, Paul; Litvan, Irene; Macias, Raul; Bezard, Erwan; Obeso, Jose

How to cite

RODRIGUEZ-OROZ, Maria et al. Initial clinical manifestations of Parkinson's disease: features and pathophysiological mechanisms. In: Lancet neurology, 2009, vol. 8, n° 12, p. 1128–1139. doi: 10.1016/S1474-4422(09)70293-5

This publication URL: <https://archive-ouverte.unige.ch/unige:95918>

Publication DOI: [10.1016/S1474-4422\(09\)70293-5](https://doi.org/10.1016/S1474-4422(09)70293-5)

Initial clinical manifestations of Parkinson's disease: features and pathophysiological mechanisms

Maria C Rodríguez-Oroz, Marjan Jahanshahi, Paul Krack, Irene Litvan, Raúl Macías, Erwan Bezard, José A Obeso

Lancet Neurol 2009; 8: 1128–39

Department of Neurology, Clínica Universitaria and Medical School and Neuroscience, CIMA, University of Navarra, Pamplona, Spain (M C Rodríguez-Oroz MD, J A Obeso MD); Centro Investigación en Red-Enfermedades Neurodegenerativas (CIBERNED), Instituto de Carlos III, Ministerio de Sanidad, Spain (M C Rodríguez-Oroz, J A Obeso); Sobell Department of Motor Neuroscience and Movement Disorders, UCL Institute of Neurology, The National Hospital for Neurology and Neurosurgery, London, UK (M Jahanshahi MD); Movement Disorders Unit, Department of Psychiatry and Neurology, University Hospital Grenoble, France and Grenoble Institute of Neuroscience, Inserm, Grenoble, France (P Krack MD); University of Louisville Division of Movement Disorders at Frazier Neuroscience Rehabilitation Institute, Louisville, KY, USA (I Litvan MD); Centro Internacional Restauración Neurológica (CIREN), Havana, Cuba (R Macías MD); Université Victor Segalen-Bordeaux 2, Centre National de la Recherche Scientifique, Bordeaux Institute of Neuroscience, Bordeaux, France (E Bezard PhD)

Correspondence to: José A Obeso, Clínica Universitaria and CIMA, Universidad de Navarra, Pamplona 31008, Spain jobeso@unav.es

A dopaminergic deficiency in patients with Parkinson's disease (PD) causes abnormalities of movement, behaviour, learning, and emotions. The main motor features (ie, tremor, rigidity, and akinesia) are associated with a deficiency of dopamine in the posterior putamen and the motor circuit. Hypokinesia and bradykinesia might have a dual anatomo-functional basis: hypokinesia mediated by brainstem mechanisms and bradykinesia by cortical mechanisms. The classic pathophysiological model for PD (ie, hyperactivity in the globus pallidus pars interna and substantia nigra pars reticulata) does not explain rigidity and tremor, which might be caused by changes in primary motor cortex activity. Executive functions (ie, planning and problem solving) are also impaired in early PD, but are usually not clinically noticed. These impairments are associated with dopamine deficiency in the caudate nucleus and with dysfunction of the associative and other non-motor circuits. Apathy, anxiety, and depression are the main psychiatric manifestations in untreated PD, which might be caused by ventral striatum dopaminergic deficit and depletion of serotonin and norepinephrine. In this Review we discuss the motor, cognitive, and psychiatric manifestations associated with the dopaminergic deficiency in the early phase of the parkinsonian state and the different circuits implicated, and we propose distinct mechanisms to explain the wide clinical range of PD symptoms at the time of diagnosis.

Introduction

Parkinson's disease (PD) has typically been considered to be a motor disorder^{1,2} secondary to basal ganglia dysfunction. The definition in the 1960s of the nigrostriatal dopaminergic pathway and the discovery of dopamine striatal loss provided one of the best established correlations between clinical features and biochemical pathology.³ The main manifestations of PD—akinesia or bradykinesia, rigidity, and tremor—are now known to be directly related to dopaminergic striatal loss. Other clinical manifestations, albeit usually less noticeable, that are also seen at the time of diagnosis include sensory symptoms (eg, pain and tingling), hyposmia, sleep alterations, depression and anxiety, and abnormal executive, working memory-related functions.

The clinical manifestations of PD after diagnosis comprise a mixture of disease-related and treatment-induced manifestations. Motor and non-motor side-effects directly related to treatment such as dyskinesias or hallucinations, and other features arising after long-term disease progression (eg, gait problems and disequilibrium, autonomic failure, and dementia), are not covered in this Review. We discuss the pathophysiological mechanisms underlying the main clinical features of PD at the time of diagnosis and, therefore, when the clinical features are mainly affected by catecholaminergic (ie, mainly dopaminergic) deficits. We provide a differential explanation for the anatomo-functional basis of the major clinical manifestations of PD (ie, tremor, rigidity, akinesia, dysexecutive syndrome, and depression) to expand the views and concepts held by the classic pathophysiological model.

Key motor features: basic concepts

PD motor manifestations begin focally, typically in one limb segment, when dopamine concentrations fall below 60–70% in the contralateral striatum. The onset

of motor features correlates with loss of dopamine in the posterior putamen (figure 1), corresponding to the motor region of the striatum. The main features of PD (ie, akinesia or bradykinesia, rigidity, and tremor) are therefore mainly related to dysfunction of the motor circuit (figure 2).

Reduced and slow movements

The term akinesia (strictly defined as “lack of movement”) comprises many clinical features, which need to be differentiated for the discussion of underlying pathophysiological mechanisms. One type of akinesia, hypokinesia, consists of reduced frequency and amplitude of spontaneous movement, which is particularly noticeable in automatic movements. Typical manifestations are reduced blinking rate and facial expressions, absent or reduced arm swinging, and absence of associated movements during daily life activities such as rising from a chair and waving. All these hypokinetic features were collectively grouped under the descriptive term “poverty of movement” by Wilson¹ in his influential series on disorders of motility and tone. This term also included a tendency of patients to stand still and to have reduced gesticulation. The parkinsonian gait includes several hypokinetic features such as reduced stride length and decreased off-ground elevation of the feet, leading to short stepping and shuffling, which are associated with reduced arm swinging and predominance of flexor posture. Micrographia is a particular form of hypokinesia, in which a highly learned automatic motor task is not only characteristically reduced in amplitude but is also associated with slowness in the execution.

Bradykinesia is characterised by reduced speed when initiating and executing a single movement and progressive reduction of its amplitude, up to complete cessation^{1,2} during repetitive simple movements.

Undertaking sequential or simultaneous movements is severely disrupted and frequently impeded, which has substantial effects on daily living.⁵ Kinematic studies have consistently shown that both movement time for single movements and inter-onset latency for sequential movements are increased. Although all types of movements are slower in PD, there is some evidence that externally triggered movements are less impaired than those that are self-initiated; this is best exemplified by gait improvement when external cues are provided.⁶

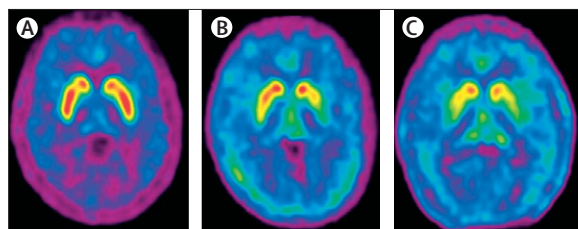


Figure 1: ¹⁸F-fluorodopa PET of a healthy individual (A) and a patient with Parkinson's disease at the time of diagnosis (B) and after 12 years of follow-up (C)

¹⁸F-fluorodopa uptake is asymmetrically reduced in the early stages of disease, mostly localised to the posterior putamen. As the disease progresses, the anterior putamen and caudate are affected. Images provided by Carlos Juri and Javier Arbizu (Neurology and Neuroscience and Nuclear Medicine Departments, University of Navarra, Pamplona, Spain).

Disorders of muscle tone

Rigidity is characterised by increased muscular tone to palpation at rest, reduced distension to passive movement, increased resistance to stretching, and facilitation of the shortening reaction. Both flexor and extensor muscular groups are involved but flexor muscles of the limbs are more affected in the early stages of disease progression.⁷ Increased resistance is dependent on velocity and is more noticeable when the examined joint is stretched slowly;⁷ fast displacement is associated with minimum or no rigidity. Joint elongation is typically increased by voluntary activation of other body parts (Froment's manoeuvre) and is commonly interrupted by so-called cog-wheel rigidity.⁸

Tremor

Tremor is typically characterised by 4–6 Hz activity at rest in the limbs with distal predominance. The fingers are most commonly affected, giving rise to the classic “pill-rolling” tremor. The jaw muscles and tongue can occasionally be involved but axial muscles (abdomen, back, and hip) and the neck are rarely affected. Tremor increases in amplitude, or can be triggered by manoeuvres such as voluntary movement of other body parts, arithmetic calculation, and stress. Levodopa and other dopaminergic drugs are less efficacious against

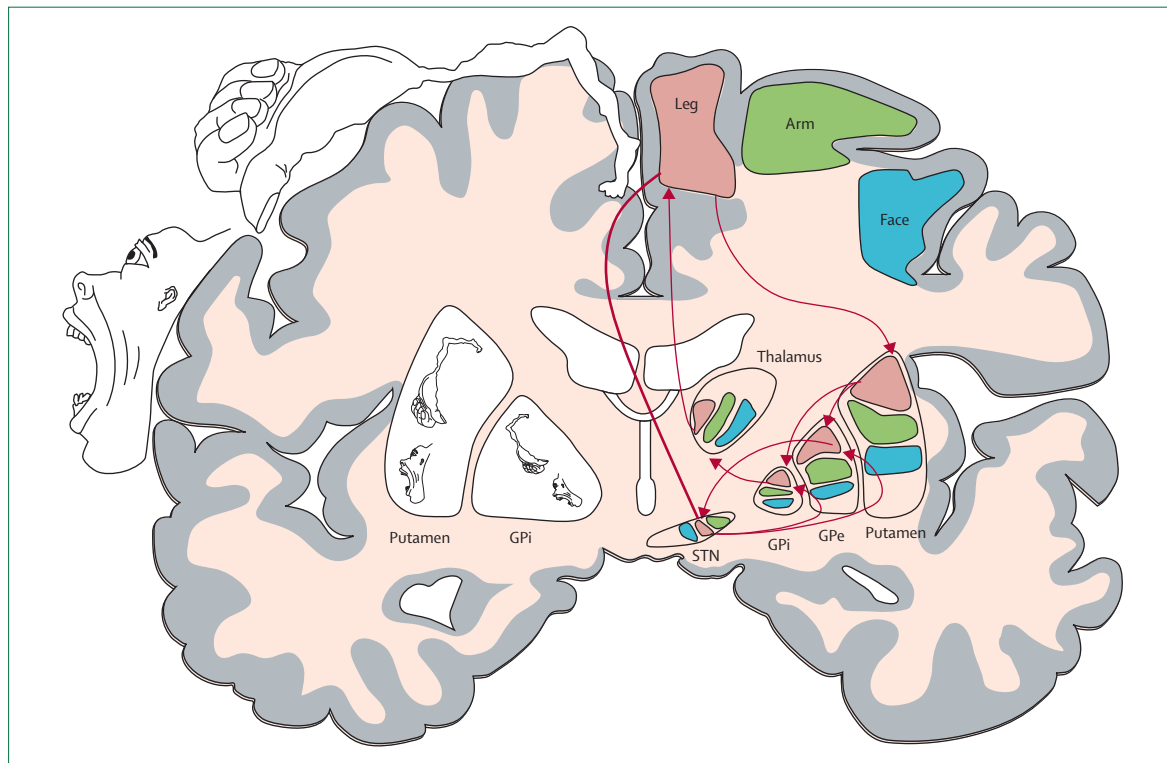


Figure 2: The motor circuit and its somatotopic organisation

The motor circuit (indicated by red arrows connecting the regions that modulate leg movements) is somatotopically organised throughout the loop, with the regions representing leg movements lying dorsal and medial, those representing face movements lying ventral and lateral, and those representing arm movements lying in-between. The somatotopic arrangement of the primary motor cortex is generally maintained in the striatopallidal and subthalamic nuclei. Figure reprinted from Obeso and colleagues.⁴ GPe=globus pallidus pars externa. GPi=globus pallidus pars interna. STN=subthalamic nucleus.

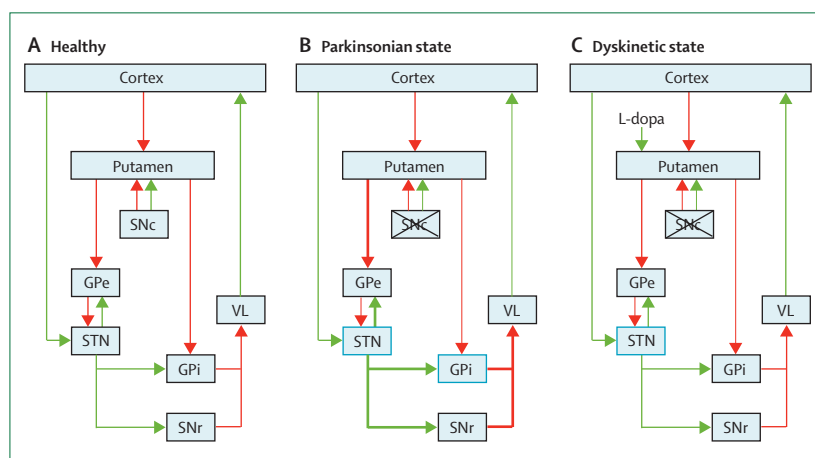


Figure 3: The classic pathophysiological model of the basal ganglia in healthy (A), parkinsonian (B), and dyskinetic (C) states

Cortical motor areas project glutamatergic axons to the putamen, which sends GABAergic projections to the GPi and the SNr by two pathways: the monosynaptic GABAergic “direct circuit” (putamen–GPi) and the trisynaptic (putamen–GPe–STN–GPi/SNr) “indirect circuit”. Dopamine from the SNc facilitates putaminal neurons in the direct pathway and inhibits those in the indirect pathway. Activation of the direct pathway leads to reduced neuronal firing in the GPi/SNr and movement facilitation, while activation of the indirect pathway suppresses movements. The STN is also activated by an excitatory projection from the cortex (“hyperdirect” pathway), a connection that was not included in the original model. In Parkinson’s disease (B), dopamine deficit leads to increased activity in the indirect circuit, in which STN hyperactivity is a key characteristic, and hypoactivity in the direct circuit. Together, these actions result in increased GPi/SNr output inhibition of the VL nucleus of the thalamus and reduced activation of cortical and brainstem motor regions. In the dyskinetic state (C), abnormal putaminal dopaminergic activation (L-dopa arrow) leads to hypoactivity in the indirect circuit and hyperactivity in the direct circuit, resulting in reduced inhibitory output activity from the basal ganglia. Green arrows indicate excitatory activity and red arrows indicate inhibitory activity. Figure modified from Obeso and colleagues.¹² GPe=globus pallidus pars externa. GPi=globus pallidus pars interna. SNc=substantia nigra pars compacta. SNr=substantia nigra pars reticulata. STN=subthalamic nucleus. VL=ventrolateral nucleus.

tremor than other key features of PD, an assumption generally accepted without clear explanation or formal assessment.

Pathophysiology of key motor features: the classic model

The classic pathophysiological model of the basal ganglia, which was elaborated in the 1980s,^{9–11} triggered a large amount of experimental and clinical activity and led to the revitalisation of surgery for PD and other movement disorders. Figure 3 provides a summary of this original model in the healthy and pathological states, and the table summarises the main experimental findings that support this model. The initial model, based on cortico-basal ganglia-cortical loops and changes in neuronal firing rate in the globus pallidus pars interna (GPi) and the substantia nigra pars reticulata (SNr), is now recognised as limited and incapable of providing explanations for many clinical observations. The main clinical paradoxes of this model^{13,14} are summarised in the panel.

However, there are several aspects that fit well with this model. The importance of hyperactivity of the subthalamic nucleus (STN) and GPi in the parkinsonian state has been substantiated by different functional approaches in patients with PD. An increased neuronal

firing rate in the “off” state is a typical finding in the STN,¹⁵ which correlates with increased metabolic activation measured by PET of the putamen and the GPi.¹⁶ Moreover, substantial amelioration of motor features and improvement of neurophysiological and PET metabolic markers have been documented after surgery (ie, pallidotomy, subthalamotomy, and deep brain stimulation).^{17,18}

Pathophysiology of PD: expanding classic concepts

The basal ganglia networks are now known to be anatomically and physiologically subdivided into motor, oculomotor, associative, and limbic territories that are involved in functions such as learning, planning, working memory, and emotions.^{19,20} (figure 4). The dopaminergic system innervates all striatal regions, as well as other non-striatal basal ganglia nuclei and limbic and associative cortical areas.²¹ Progressive loss of dopaminergic striatal innervation (figure 1) is associated with the emergence of executive dysfunction, learning problems, and mood disorders.^{22,23} Loss of dopaminergic cortical input is also an early feature,²⁴ and cell loss in the raphe nuclei and locus coeruleus²⁵ might also have a role in the origin of non-motor manifestations. In this section we discuss the origin of the main movement, cognitive, and psychiatric manifestations commonly seen in early (ie, around diagnosis) phases of PD.

Motor features

Akinesia

Difficulty with movement has been generally considered the main manifestation of dysfunction of the basal ganglia.^{1,2} The clinical characteristics of akinesia indicate that hypokinesia and bradykinesia are probably mediated by different pathophysiological mechanisms. Hypokinesia is closely associated with reduced rhythmic movements, which in turn depends on timing mechanisms. This timing is mediated by central pattern generators, which are neuronal circuits that fire synchronously without sensory input to produce rhythmic activity. Central pattern generators thus provide a pacemaker function to the nervous system. These generators are well typified in the spinal cord for locomotion in quadruped animals and in the brainstem for the respiratory centre.²⁶ Presumably, other highly rhythmic and automatic movements such as eye blinking and arm swinging also have a central pattern generator, although the precise anatomical basis is undefined.

Dopamine and other catecholamines have a fundamental role in modulating the excitability of the central pattern generator and the perception of time.²⁷ Additionally, the substantia nigra and the basal ganglia connections with the supplementary motor area and the lateral premotor and dorsolateral prefrontal cortices are involved in time processing in animals and human beings.^{28,29} Moreover, time estimation and rhythm

	Putamen	GPe	GPI	STN	SNr
Parkinsonian state	<ul style="list-style-type: none"> Increased expression of D2 receptors, enkephalin, preproenkephalin (rat, monkey) Decreased expression of D1 receptors, dynorphin, preprotachykinin and substance P (rat, monkey) 	Decreased rate of neuronal firing (rat, monkey)	<ul style="list-style-type: none"> Increased rate of neuronal firing (monkey, patients with PD) Increased expression of CO-I and GAD (rat, monkey) STN lesion reduces CO-I and GAD (monkey) and neuronal firing rate (monkey, rat) 	<ul style="list-style-type: none"> Increased rate of neuronal firing (rat, monkey, patients with PD) Increased expression of CO-I (rat, monkey) Decreased expression of 2-DG (monkey) STN lesion improves parkinsonism (monkey, rat, patients with PD) 	<ul style="list-style-type: none"> Increased expression of CO-I and GAD (monkey, rat) STN lesion reduces expression of CO-I and GAD (monkey)
Treatment with L-dopa or apomorphine	<ul style="list-style-type: none"> Normalisation of expression of D1 and D2 receptor (rat, monkey) Normalisation of expression of preprotachykinin and substance P (rat, monkey) 	Normalisation of rate of neuronal firing (monkey)	<ul style="list-style-type: none"> Decreased rate of neuronal firing (rat, monkey, patients with PD) Decreased expression of CO-I and GAD (rat, monkey) 	<ul style="list-style-type: none"> Decreased rate of neuronal firing (rat, monkey, patients with PD) Decreased expression of CO-I (monkey) 	Decreased expression of CO-I and GAD (monkey)

2-DG=2-deoxyglucose measured by autoradiography. 6-OHDA=6-hydroxydopamine. CO-I=cytochrome oxidase-I measured by in situ hybridisation. GAD=glutamic acid decarboxylase measured by in situ hybridisation. GPe=globus pallidus pars externa. GPI=globus pallidus pars interna. MPTP=1-methyl-4-phenyl-1,2,3,6-tetrahydropyridine. PD=Parkinson's disease. SNr=substantia nigra pars reticulata. STN=subthalamic nucleus.

Table: Summary of the main findings in the 6-OHDA rat and the MPTP monkey models of parkinsonism and in patients with PD

generation are abnormal in PD^{27,30} and increased striatal expression of D2 receptors in rodents (PD model; table), is associated with impaired interval timing.³¹ Extracellular neuronal recordings in non-human primate and rodent models of PD have also shown impairment in temporal processing of spatial information.³² Therefore, hypokinesia in PD is probably mediated by disruption of central pattern generators and abnormal timing mechanisms. GPI and SNr project and activate several brainstem regions (ie, the pedunculopontine nucleus and the superior colliculus) that are functionally impaired in the parkinsonian state. The clinical features of hypokinesia suggest that excessive inhibition of brainstem circuits from the basal ganglia might have a major role in its pathophysiology. For example, a low blinking rate suggests direct inhibition of the central pattern generators, whereas increased excitability of the blink reflex and Meyerson's sign might be caused by SNr overinhibition of the superior colliculus and secondary disinhibition of the nucleus gigantocellularis.³³ Brainstem mechanisms are also likely to be engaged in the origin of postural disturbances and other motor signs such as dysphagia and dysarthria; however, these features typically occur later in the disease.

Bradykinesia can be understood as a failure of neuronal recruitment or "energisation".^{34,35} Movement patterns are correctly selected but the parameters for undertaking the action in terms of speed and amplitude of the movement are incorrectly set,^{36,37} despite preserved capability to choose the appropriate parameters.³⁵ Striatal medium spiny neurons receive many glutamatergic afferents (about 10 000 synaptic contacts per medium spiny neuron) and about 100 of these neurons converge into one GPI neuron.³⁸ This large input to output gradient requires that the basal ganglia is largely involved in selecting which neuronal signals are facilitated or not.^{39,40} In the parkinsonian state,

Panel: Major clinical paradoxes and observations in Parkinson's disease that are not explained by the classic model

Origin of key features

Increased neuronal activity in the STN/GPi-SNr and the associated inhibition of the thalamocortical projection does not provide an explanation for the origin of tremor and rigidity in Parkinson's disease.

Pallidotomy abolishes dyskinesias

Levodopa-induced dyskinesias in patients with Parkinson's disease are eliminated by GPI lesions, which is incompatible with a model that associates excessive inhibition with the GPI/SNr and reduced basal ganglia efferent activity with dyskinesias.

No deficits after interrupting basal ganglia-cortical connections

Disruption of the motor circuit by surgical lesions (ie, thalamotomy or pallidotomy) does not aggravate bradykinesia in Parkinson's disease nor induces any new motor deficit.

GPI=globus pallidus pars interna. SNr=substantia nigra pars reticulata. STN=subthalamic nucleus.

activity in the motor circuit is disrupted at several fundamental levels. First, the proportion of striatal medium spiny neurons and GPI neurons responding to stimulation is increased and the inhibition to excitation ratio decreases substantially.⁴¹ Second, selectivity of somatotopic neuronal responses to peripheral stimulation is blurred in cortical motor areas^{42,43} and basal ganglia nuclei.⁴⁴ Third, corticostriatal activity is biased towards activation of striatal neurons in the indirect circuit,⁴⁵ which, in association with increased collateral inhibition from medium spiny neurons,⁴⁶ leads to globus pallidus pars externa (GPe) inhibition

and increased STN and GPi output (figure 3B). Fourth, striatal plasticity is impaired, so that synaptic changes induced by cortical afferent stimulation such as long-term depression or potentiation are eliminated.⁴⁷ Fifth, neuronal firing synchrony increases substantially within basal ganglia structures such as the STN and GPi^{43,48} and also among different structures throughout the motor loop nuclei,^{49,50} producing abnormal oscillatory activity. In patients with PD,⁵¹ the “off” medication state is characterised by a net predominance of beta-band activity in the STN, which is substantially reduced in the “on” state⁵² (figure 5). This activity propagates to the basal ganglia and thalamocortical projection, so that the entire motor circuit is synchronised at about 20 Hz.⁵⁰

Accordingly, bradykinesia can be seen as a defect of the motor circuit to generate a phasic and time-locked inhibition of GPi neurons and to achieve substantial desynchronisation in the beta band to facilitate recruitment of cortical motoneurons appropriately adjusted for the intended movement.^{41,53–55} This activity is not only due to reduced activation of medium spiny neurons in the direct circuit,⁵⁶ but also to the combination of functionally hypoactive GPe with hyperactive STN and GPi, which reduces the probability that a cortical signal will be facilitated via the STN-GPe-GPi loop.^{56,57} Increased responsiveness of the STN-GPi might also increase movement-related activity through the hyperdirect pathway and contributes to progressive attenuation of repetitive and sequential movements and micrographia. A similar explanation might account for the prolonged latency between sequential time-locked simple movements that are automatically undertaken (ie, shaking hands or saluting at a distance). When the sequence involves different

movements and body parts, there is a higher demand on serial striatal input-output and GPe-STN-GPi modulation, accounting for the greater slowness and increased errors in execution compared with single (one joint) movements.

Rigidity

The clinical features of rigidity suggest a complex pathophysiological origin for this key feature. Thus, increased muscle tone at rest and augmented resistance to passive displacement of the joint readily evoke different mechanisms. On the one hand, there must be facilitation of spinal cord motoneuron activity, probably related to increased supraspinal driving or facilitation. On the other hand, a fundamental role for the stretch reflex must be considered. Classic physiological studies have shown that rigidity is abolished by dorsal root sectioning or by local dural injection of anaesthetics supporting a reflexive origin.⁵⁸ The latter finding led to many studies of spinal cord excitability in the 1960s and 1970s. These studies showed that spinal motoneuron responsiveness to afferents from muscle spindles (type Ia fibres), which sustains the clinically applied tendon jerk, is unaltered in PD but the inhibition normally evoked from tendon organs (type Ib fibres) is reduced,⁵⁹ whereas interneurons activated by secondary muscle afferents (type II fibres) are hyperactive. These findings suggest a shifting of spinal cord motoneurons towards increased activity in response to peripheral stimulation.

The importance of supraspinal mechanisms in rigidity has also received much attention. Slow and sustained muscle stretching (giving rise to the tonic stretch reflex) is increased in patients with PD.⁷ Furthermore, brief and rapid phasic muscle stretching of the limbs evokes a typical spinal reflex (latency about 20 ms) and a long-latency response (about 40 ms). The long-latency stretch reflex is mediated through the primary motor cortex and is increased in patients with PD. However, this stretch reflex is larger in distal muscles than in proximal muscles of the upper limb, whereas rigidity is also present proximally and in the axial musculature. The correlation of this reflex with clinical rigidity is not clear.⁶⁰

The importance of cortical mechanisms is reinforced by findings of increased primary motor cortex excitability as detected by magnetic cortical stimulation.^{61,62} Stimulation of the premotor cortex in patients with PD in the “off” medication state did not increase motor cortex excitability, an effect that was present in healthy controls and in the same patients with PD when “on” medication.⁶³ These results are similar to findings in monkeys treated with MPTP (1-methyl-4-phenyl-1,2,3,6-tetrahydropyridine) in which primary motor cortex neurons responded more vigorously and with less specificity to passive limb movements, although the firing rate at rest was not modified.^{43,53}

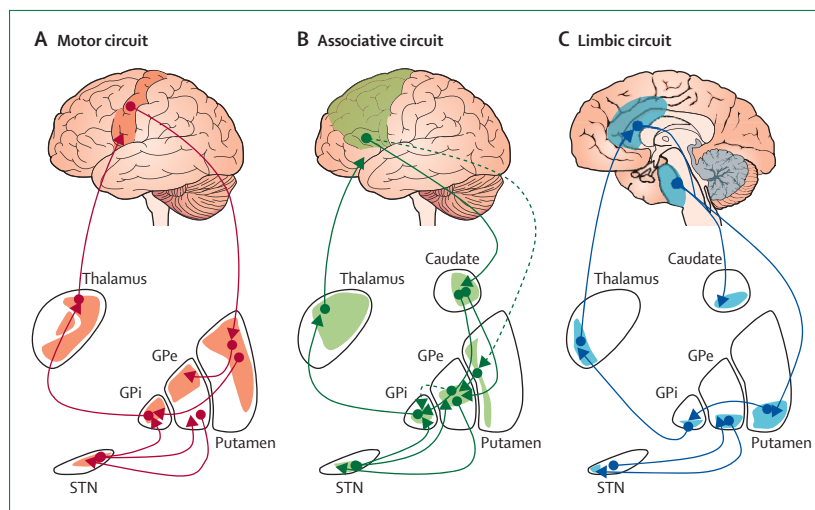


Figure 4: Functional organisation of the basal ganglia

The basal ganglia are divided into motor (A), associative (B), and limbic (C) subregions, which are topographically segregated, as highlighted by areas coloured in red (motor cortex), green (prefrontal cortex), and blue (anterior cingulate cortex). Figure reprinted from Obeso and colleagues.⁴ GPe=globus pallidus pars externa. GPi=globus pallidus pars interna. STN=subthalamic nucleus.

Surgery of the basal ganglia and motor thalamus has a clear antirigidity effect, indicating a direct role of the motor circuit in the origin of rigidity. How dopamine deficiency and increased basal ganglia output activity are associated with primary motor cortex excitability and rigidity is not understood. There might be several possible and not mutually exclusive mechanisms. For example, changes in GABA and cholinergic interneurons lead to reduce intrastriatal inhibition in the indirect circuit, which could facilitate responses to peripheral stimulation. Neuronal responsiveness of the STN and GPi to peripheral stimulation is increased in the parkinsonian state, suggesting that responses to normal muscle afferent impulses could facilitate cortically mediated responses. Hyperactivity of area 4 (the primary motor cortex) plus increased gain in the cortico-STN-GPi microcircuit and the loss of somatotopic specificity could explain Froment's sign. However, neuronal discharges in the STN and GPi should lead to cortical inhibition or absence of facilitation, which does not explain the excessive response to stretching that characterises rigidity and the increased muscle tone at rest. Thus, rigidity is not explained by the classic model of basal ganglia pathophysiology. The origin of rigidity in PD would be easier to understand if basal ganglia output to the thalamus was not only inhibitory. Additionally, rigidity probably involves disinhibition of brainstem mechanisms (ie, reticulospinal projections⁶⁴ mediating muscle tone and posture).

Tremor

Rhythmic and synchronous neuronal firing recorded in the STN and the GPi correlates with tremor in the limbs in both monkeys treated with MPTP and in patients with PD.⁶⁵ Surgery of the STN can readily stop parkinsonian tremor. This tremor is inhibited at the onset of a voluntary muscle contraction involving the same body part and by cortical magnetic stimulation, and disappears after stroke causing hemiparesis, all of which indicate that the pyramidal tract is the final output pathway mediating tremor. However, rhythmic firing is better recorded and tremor stopped in the ventralis intermedius nucleus (Vim) of the thalamus.⁶⁶ The Vim is outside the basal ganglia projection territory; it receives proprioceptive (type Ia) afferents from muscle spindles and projects to the primary somatosensory cortex and motor cortex (area 3a). In monkeys treated with MPTP, 5 Hz stimulation of the GPi is not capable of recruiting and driving motor cortex activity, revealing a filtering characteristic of low frequency activity in the motor circuit.⁶⁷ This finding means that rhythmic activity in the basal ganglia is unlikely to drive cortical-spinal motor activity to generate tremor. The origin of tremor in PD is therefore a pathophysiological puzzle. Specifically, the mechanistic link between dopamine deficiency and abnormal oscillatory activity in an extensive motor network that involves the basal

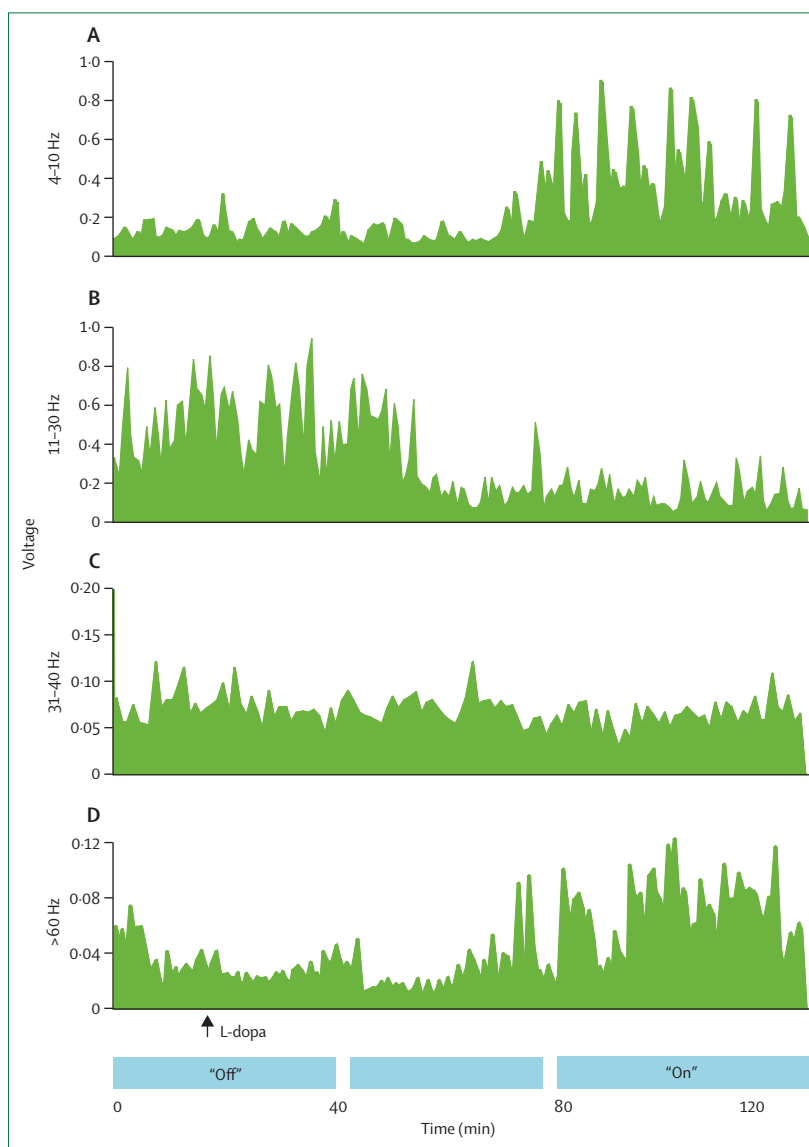


Figure 5: Oscillatory activity recorded by local field potentials in the subthalamic nucleus in a patient with Parkinson's disease

In the "off" state there is a net predominance of activity in the beta band (11–30 Hz), which is substantially reduced when the effect of levodopa starts and activity in the gamma band (>60 Hz) emerges. Figure reprinted from Alonso-Frech and colleagues.⁵²

ganglia, the cerebellar, the thalamus and the motor cortex needs to be understood. We suggest two main possible mechanisms.

First, basal ganglia could be directly involved. In this potential mechanism, increased basal ganglia output leads to increased excitability of the primary motor cortex and increased sensitivity to stretching and synchronous basal ganglia firing, thus facilitating the onset of oscillations around the motor loop. Muscle stretching evokes neuronal responses in the STN of patients with PD, which show a pronounced tendency to oscillate at tremor frequency. The latency of about 60–100 ms of

these responses and total movement time of each tremor beat of 150–200 ms fit with a loop through the basal ganglia at 5 Hz. Loss of direct dopaminergic control of the microcircuitry network formed by the STN-GPe/GPi interconnections could play a part in this regard.⁶⁸

Second, the neuronal network underlying tremor might not primarily lie in the basal ganglia. This possibility is supported by the high association between the Vim and cerebellar activation and tremor and by the exquisite sensitivity of Vim manipulations to cessation of tremor. Dopaminergic projections to the thalamus are known to be present in monkeys and human beings,⁶⁹ and the STN-GPi form a loop with the centromedian thalamic nuclei,⁷⁰ which in turn is reciprocally connected to the primary motor cortex. Extrastriatal dopamine denervation, or loss of other transmitters, could facilitate synchronous 5 Hz activity within the thalamus and basal ganglia. The possibility therefore arises that loss of catecholaminergic neurons required for tremor in PD might have a different pattern to that underlying the akinetic-rigid presentation. ¹⁸F-fluorodopa PET striatal uptake does not correlate with tremor severity⁷¹ and resting tremor is not associated with striatal lesions. However, a specific pattern of neurodegeneration accounting for tremor and differentiating predominant tremor from akinetic-rigid forms of PD has not been yet found.⁷²

Key motor features of PD: conclusions and suggestions

Two main characteristics of parkinsonian motor features are the greater difficulty in moving with self-initiated than with externally triggered movements and the abnormal activation of specific body parts. Movements of the limbs or gait improve when initiated in response to external cues, and bradykinesia is made worse when more than one body part is activated simultaneously; both rigidity and tremor are also increased or are induced by movements of other body parts. These features fit well with the concept that the basal ganglia have a fundamental role in modulating activity of premotor areas (supplementary motor area, pre-supplementary motor area, and dorsolateral prefrontal cortex) that deal with selection of self-initiated actions.^{39,40,55} However, analysis of the main motor manifestations of PD suggests a more complex pathophysiological origin. Thus, key features of hypokinesia such as absence of spontaneous movement or reduced blink rate are unlikely to share mechanisms with bradykinetic manifestations such as reduced amplitude and slowness of the limbs or simultaneous manual movements. We suggest that hypokinesia is related to overinhibition of the brainstem central pattern generator, whereas bradykinesia is related to perturbed activation or inhibition of the basal ganglia-thalamocortical pathway. The primary motor cortex is impaired in a complex way in the parkinsonian state and there is a functional uncoupling of premotor areas and primary motor area. This impairment could be due to a

preferential involvement of area 4 activity in the origin of rigidity (and possibly tremor), whereas hypoactivation of premotor areas could underlie bradykinesia. Recent data indicate that bradykinesia itself encompasses several mechanisms, with amplitude and speed of movement probably mediated by different mechanisms,³⁷ which suggest differential involvement of cortical motor areas. Additionally, the role of basal ganglia output on to the brainstem deserves greater attention. Several features of akinesia and rigidity probably involve a brainstem mechanism. It is difficult to explain the key motor features of PD on the basis of a common pathophysiological mechanism. Moreover, current data on the anatomo-functional organisation of the basal ganglia can not comprehensively explain the range of motor manifestations associated with dopamine depletion in PD.

Cognitive manifestations

Cognitive deficits in PD range from “frontal” executive dysfunction, which can be present in a mild form from early stages, to frank dementia in late stages. Here, we concentrate on disorders of executive function, which can be recognised as early features of PD.

Executive dysfunction

Executive function refers to processes involved in the higher-order control of behaviour, such as strategic planning and problem solving, maintaining and shifting attention, and behavioural regulation: the ability to initiate, execute, inhibit, and monitor a sequence of actions. Depending on sample characteristics and criteria used, cognitive deficits are present in early PD in 20–40% of patients^{73–75} but are often overshadowed by motor features.

The finding that patients with PD show deficits compared with matched controls on several standardised neuropsychological tests of executive function such as the Wisconsin card sorting test, verbal fluency, and the Stroop test has been well documented.⁷⁶ Patients with PD also show impaired performance on other tests of executive function that require planning and problem solving^{76,77} or shifting of attentional set,^{77,78} on tasks requiring suppression of prepotent or habitual responses,^{76,79} and in task situations that require sharing of attentional resources for concurrent performance of two tasks.^{80,81} Such impairment becomes more evident when patients have to rely on internal control of attention relative to when external cues are available to guide behaviour,⁸² in a way that is similar to what occurs with movement. Other deficits of cognitive function, such as impairment of visuospatial function, can also occur in PD,⁸³ but language is generally intact in early PD.^{73–75} Memory impairment in early PD could be largely due to effortful retrieval, as cueing improves recall and recognition memory is usually not impaired,^{76,84} although deficits in recognition memory have been found in other

studies (reviewed elsewhere⁸⁵). Patients with PD have impaired implicit learning on both cognitive and motor tasks, such as the weather prediction task⁸⁶ and the serial reaction time task.⁸⁷

Generally, many aspects of the dysexecutive syndrome improve with dopaminergic treatment.^{88,89} However, dopaminergic medication has a detrimental effect on other aspects of cognition, such as reversal or conditional associative learning. These deficits have been attributed to a dopamine overdose effect in the frontostriatal circuits through the ventral striatum (orbitofrontal, anterior cingulate, and inferotemporal circuits). This effect could be because there is not substantial dopamine depletion in these circuits in the early stages of PD.^{90,91}

Pathophysiology of executive dysfunction

Reduced ¹⁸F-fluorodopa uptake in the caudate has been associated with executive dysfunction in patients with PD in some^{92,93} but not all studies,⁹⁴ thus implicating nigrostriatal dopamine depletion in these cognitive deficits. The mesocortical dopamine system is also affected,⁹⁵ although prefrontal overactivity, particularly in the anterior cingulate, has been found at early stages of the disease.⁹⁶ Imaging studies have shown that executive deficits and working memory impairment in patients with PD are associated with dysfunction in the basal ganglia,^{23,79,97,98} the dorsolateral prefrontal cortex,^{79,99} or the caudate and prefrontal cortex,¹⁰⁰ thus implicating both the nigrostriatal and the mesocortical pathways in these deficits. However, a recent ¹¹C-raclopride study of spatial working memory concluded that executive dysfunction in patients with early PD is associated with impaired nigrostriatal function and that mesocortical dopaminergic function is well preserved in early PD.²² Similarly, data from several studies in monkeys with minimum motor deficits after low and slow MPTP exposure have shown deficits in executive function and attention,¹⁰¹ which were best explained by a nigrostriatal lesion.¹⁰²

These findings suggest that dysfunction of cortico-basal ganglia associative areas secondary to dopamine depletion might have an important role in early executive problems in patients with PD. However, the relative contribution of the nigrostriatal and mesocortical dopamine depletion to executive dysfunction probably varies during the course of the illness and also depends on the nature of the specific executive process under investigation. Evidence also implicates other neurotransmitters such as acetylcholine in the cognitive manifestations of PD.^{88,103–105}

Psychiatric manifestations

A premorbid personality has been described in several studies.^{106,107} The typical personality of patients with PD is mainly characterised by emotional and attitudinal inflexibility, introversion, and a depressive tendency, which can precede the development of motor abnormalities by many years.

Psychiatric symptoms might appear at any time, usually worsen as the disease progresses, and occur frequently in patients with PD but without dementia.¹⁰⁸ Depression, anxiety, and apathy are the most prevalent symptoms. Apart from these features, most psychiatric symptoms that develop in the course of PD are seen in patients with advanced PD and are associated with complications derived from chronic dopaminergic treatments.¹⁰⁹

Psychiatric problems in patients with early PD

In untreated patients with early PD, depression (37%), apathy (27%), sleep disturbances (18%), and anxiety (17%) are the most common neuropsychiatric symptoms.¹¹⁰ Patients with PD who have never been treated also have deficits on reward processing and novelty seeking, which can be reversed by dopamine agonist therapy.^{106,111}

Longitudinal studies assessing the predominant clinical psychiatric manifestations during disease progression are scarce.¹¹² Depression occurs in about 40–50% of patients with PD throughout the course of the disease,¹¹³ but this symptom is commonly underdiagnosed and undertreated, despite being a predictor of poor quality of life.¹¹⁴ Guilt and self-blame are less frequently reported. Suicidal ideation is not uncommon, but suicidal behaviour is rare. Depression is manifested as pessimism and feelings of hopelessness, can be associated with apathy and anxiety, and can occasionally be difficult to discern from symptoms such as bradyphrenia, fatigue, and sleep disturbances. Apathy is a generalised lack of motivation accounting for a decrease in goal-orientated activities, loss of interest, and blunted emotional experience. Apathy is seen in 17–70% of patients with PD,^{115,116} and frequently coexists with depression or dementia, although it can occur as the sole major manifestation¹¹⁶ or can be associated with executive dysfunction.¹¹⁷

Generalised anxiety, panic attacks, and social phobias are common in PD.¹¹⁸ About 40% of patients have anxiety,^{119,120} although a recent series reported a prevalence of 69% (930 of 1351).¹⁰⁸ The symptoms include apprehensiveness, nervousness, irritability, and feelings of impending disaster as well as palpitations, hyperventilation, and insomnia. Panic disorder is the most common anxiety disorder in PD.

Pathophysiological basis of psychiatric manifestations

The pathophysiological basis of the non-drug-induced psychiatric manifestations in PD is poorly understood. Depression and apathy have been linked to ventral striatum and mesolimbic dopaminergic denervation.^{121,122} Involvement of norepinephrine¹²² and serotonin¹²³ metabolism has also been suspected. As apathy, anxiety, and depression precede disease onset in 30% of recently diagnosed patients,¹²⁴ and there is no evidence of generalised catecholaminergic cell loss in patients with early PD, these manifestations could be associated

Search strategy and selection criteria

References for this Review were identified through searches of PubMed with the search terms "basal ganglia", "Parkinson's disease", "akinesia", "rigidity", "tremor", "executive dysfunctions", "psychiatric complications" "apathy", "depression", and "PET" as main keywords between January, 1960, and August, 2009. Papers published in English, French, and Spanish were considered.

with dopaminergic striatal deficit. Thus, dopaminergic treatments are usually beneficial¹²⁵ and lead to a period of restored behaviour and mood. However, the available data do not allow any firm conclusion regarding the relative role of catecholamines in the origin of depression and other early psychiatric manifestations. In patients with more advanced disease, depression, acute sadness, or dysphoria might be associated with "off-drug" fluctuations,¹²⁶ which could be seen as the opposite of the hyperdopaminergic behaviours (ie, impulse control disorders¹⁰⁹) induced by dopaminergic drugs. Additionally, apathy improves with dopaminergic treatment.¹²⁷

Conclusions

The basal ganglia networks involve complex sets of cortical and subcortical connections involved in motor control, cognitive functions, and emotional processing, probably through a common pathway, whereas the nigrostriatal dopaminergic system modulates input and the glutamatergic subthalamic projection regulates output. The wide clinical range of symptoms in patients with PD, even in early stages, could be due to dysfunction in distinct cortico-basal ganglia loops. The classic pathophysiological model of the basal ganglia does not explain the origin of rigidity and tremor or the constellation of features comprising akinesia. Moreover, there is insufficient understanding of the mechanisms underlying executive dysfunction and psychiatric features. The effect of deficits in neurotransmitters other than dopamine, albeit known for many years, has not been adequately incorporated in the pathophysiology of PD. What is now required is a new holistic model dealing with the broadened clinical manifestations in early and later stages. The role of compensatory mechanisms would be an important feature to consider and incorporate into future models.

Contributors

All authors contributed to the design and concepts in this paper.

Conflicts of interest

IL is on the consultancy and advisory board of Noscira. EB is a shareholder of Motac Holdings and Chief Scientific Officer of Motac Neuroscience. Motac is a contract research organisation that tests therapeutic strategies for cognitive (eg, mild cognitive impairment and Alzheimer's disease) and movement (eg, Parkinson's disease and levodopa-induced dyskinesia) disorders. All other authors have no conflicts of interest.

Acknowledgments

The content of this Review is derived from a meeting (The Role Of The Basal Ganglia In Movement, Behavior And Emotions) held in December, 2008, at the Centro Internacional de Restauración Neurológica (CIREN) in Havana, Cuba. The meeting was organised by the CIREN and the Neuroscience Department, CIMA, University of Navarra, Pamplona, Spain, and sponsored by charitable donations. Authors are grateful to Julian Alvarez (president of CIREN) for his support.

References

- 1 Wilson SAK. Disorders of motility and tone. *Lancet* 1925; **206**: 1–10, 53–62, 169–78.
- 2 Marsden CD. The mysterious motor function of the basal ganglia: the Robert Wartenberg Lecture. *Neurology* 1982; **32**: 514–39.
- 3 Hornykiewicz O. Basic research on dopamine in Parkinson's disease and the discovery of the nigrostriatal dopamine pathway: the view of an eyewitness. *Neurodegener Dis* 2008; **5**: 114–17.
- 4 Obeso JA, Rodríguez-Oroz MC, Benítez-Temiño B, et al. Functional organization of the basal ganglia: therapeutic implications for Parkinson's disease. *Mov Disord* 2008; **23** (suppl 3): S548–59.
- 5 Schwab RS, England AC, Peterson E. Akinesia in Parkinson's disease. *Neurology* 1959; **9**: 65–72.
- 6 Morris ME, Iansek R, Matyas TA, Summers JJ. Stride length regulation in Parkinson's disease. Normalization strategies and underlying mechanisms. *Brain* 1996; **119**: 551–68.
- 7 Andrews CJ, Burke D, Lance JW. The response to muscle stretch and shortening in Parkinsonian rigidity. *Brain* 1972; **95**: 795–812.
- 8 Broussolle E, Krack P, Thobois S, et al. Contribution of Jules Froment to the study of parkinsonian rigidity. *Mov Disord* 2007; **22**: 909–14.
- 9 Albin RL, Young AB, Penney JB. The functional anatomy of basal ganglia disorders. *Trends Neurosci* 1989; **12**: 366–75.
- 10 Crossman AR, Clarke CE, Boyce S, et al. MPTP-induced parkinsonism in the monkey: neurochemical pathology, complications of treatment and pathophysiological mechanisms. *Can J Neurol Sci* 1987; **14**: 428–35.
- 11 DeLong MR. Primate models of movement disorders of basal ganglia origin. *Trends Neurosci* 1990; **13**: 281–85.
- 12 Obeso JA, Rodríguez-Oroz MC, Rodríguez M, DeLong MR, Olanow CW. Pathophysiology of levodopa-induced dyskinesias in Parkinson's disease: problems with the current model. *Ann Neurol* 2000; **47** (4 suppl 1): S22–32.
- 13 Marsden CD, Obeso JA. The functions of the basal ganglia and the paradox of stereotaxic surgery in Parkinson's disease. *Brain* 1994; **117**: 877–97.
- 14 Brown P, Eusebio A. Paradoxes of functional neurosurgery: clues from basal ganglia recordings. *Mov Disord* 2008; **23**: 12–20.
- 15 Rodríguez-Oroz MC, Rodríguez M, Guridi J, et al. The subthalamic nucleus in Parkinson's disease: somatotopic organization and physiological characteristics. *Brain* 2001; **124**: 1777–90.
- 16 Lin TP, Carbon M, Tang C, et al. Metabolic correlates of subthalamic nucleus activity in Parkinson's disease. *Brain* 2008; **131**: 1373–80.
- 17 Limousin P, Brown RG, Jahanshahi M, et al. The effects of posteroventral pallidotomy on the preparation and execution of voluntary hand and arm movements in Parkinson's disease. *Brain* 1999; **122**: 315–27.
- 18 Trost M, Su S, Su P, et al. Network modulation by the subthalamic nucleus in the treatment of Parkinson's disease. *Neuroimage* 2006; **31**: 301–07.
- 19 Hikosaka O, Nakamura K, Sakai K, Nakahara H. Central mechanisms of motor skill learning. *Curr Opin Neurobiol* 2002; **12**: 217–22.
- 20 Seger CA. The basal ganglia in human learning. *Neuroscientist* 2006; **12**: 285–90.
- 21 Bjorklund A, Dunnett SB. Dopamine neuron systems in the brain: an update. *Trends Neurosci* 2007; **30**: 194–202.
- 22 Sawamoto N, Piccini P, Hotton G, et al. Cognitive deficits and striato-frontal dopamine release in Parkinson's disease. *Brain* 2008; **131**: 1294–302.
- 23 Marklund P, Larsson A, Elgh E, et al. Temporal dynamics of basal ganglia under-recruitment in Parkinson's disease: transient caudate abnormalities during updating of working memory. *Brain* 2009; **132**: 336–46.

- 24 Moore RY, Whone AL, Brooks DJ. Extrastriatal monoamine neuron function in Parkinson's disease: an 18F-dopa PET study. *Neurobiol Dis* 2008; **29**: 381–90.
- 25 Hoogendijk WJ, Pool CW, Troost D, et al. Image analyser-assisted morphometry of the locus coeruleus in Alzheimer's disease, Parkinson's disease and amyotrophic lateral sclerosis. *Brain* 1995; **118**: 131–43.
- 26 Yuste R, MacLean JN, Smith J, Lansner A. The cortex as a central pattern generator. *Nat Rev Neurosci* 2005; **6**: 477–83.
- 27 Buhusi CV, Meck WH. What makes us tick? Functional and neural mechanisms of interval timing. *Nat Rev Neurosci* 2005; **6**: 755–65.
- 28 Meck WH. Neuroanatomical localization of an internal clock: a functional link between mesolimbic, nigrostriatal, and mesocortical dopaminergic systems. *Brain Res* 2006; **1109**: 93–107.
- 29 Jahanshahi M, Jones CR, Dürnbarger G, Frith CD. The substantia nigra pars compacta and temporal processing. *J Neurosci* 2006; **26**: 12266–73.
- 30 Pastor MA, Artieda J, Jahanshahi M, Obeso JA. Time estimation and reproduction is abnormal in Parkinson's disease. *Brain* 1992; **115**: 211–25.
- 31 Drew MR, Simpson EH, Kellendonk C, et al. Transient overexpression of striatal D2 receptors impairs operant motivation and interval timing. *J Neurosci* 2007; **27**: 7731–39.
- 32 Leblois A, Meissner W, Bezard E, et al. Temporal and spatial alterations in GPe neuronal encoding might contribute to slow down movement in Parkinsonian monkeys. *Eur J Neurosci* 2006; **24**: 1201–08.
- 33 Basso MA, Powers AS, Evinger C. An explanation for reflex blink hyperexcitability in Parkinson's disease. I. Superior colliculus. *J Neurosci* 1996; **16**: 7308–17.
- 34 Hallett M, Khoshbin S. A physiological mechanism of bradykinesia. *Brain* 1980; **103**: 301–14.
- 35 Mazzoni P, Hristova A, Krakauer JW. Why don't we move faster? Parkinson's disease, movement vigor, and implicit motivation. *J Neurosci* 2007; **27**: 7105–16.
- 36 Berardelli A, Dick JP, Rothwell JC, et al. Scaling of the size of the first agonist EMG burst during rapid wrist movements in patients with Parkinson's disease. *J Neurol Neurosurg Psychiatry* 1986; **49**: 1273–79.
- 37 Espay AJ, Beaton DE, Morgante F, et al. Impairments of speed and amplitude of movement in Parkinson's disease: a pilot study. *Mov Disord* 2009; **24**: 1001–08.
- 38 Yelnik J, Francois C, Percheron G. Spatial relationships between striatal axonal endings and pallidal neurons in macaque monkeys. *Adv Neurol* 1997; **74**: 45–56.
- 39 Guthrie M, Myers CE, Gluck MA. A neurocomputational model of tonic and phasic dopamine in action selection: a comparison with cognitive deficits in Parkinson's disease. *Behav Brain Res* 2009; **200**: 48–59.
- 40 Redgrave P, Prescott TJ, Gurney K. The basal ganglia: a vertebrate solution to the selection problem? *Neuroscience* 1999; **89**: 1009–23.
- 41 Boraud T, Bezard E, Bioulac B, Gross CE. Ratio of inhibited-to-activated pallidal neurons decreases dramatically during passive limb movement in the MPTP-treated monkey. *J Neurophysiol* 2000; **83**: 1760–63.
- 42 Escola L, Michelet T, Douillard G, et al. Disruption of the proprioceptive mapping in the medial wall of parkinsonian monkeys. *Ann Neurol* 2002; **52**: 581–87.
- 43 Goldberg JA, Boraud T, Maraton S, et al. Enhanced synchrony among primary motor cortex neurons in the 1-methyl-4-phenyl-1,2,3,6-tetrahydropyridine primate model of Parkinson's disease. *J Neurosci* 2002; **22**: 4639–53.
- 44 Filion M, Tremblay L, Bedard PJ. Abnormal influences of passive limb movement on the activity of globus pallidus neurons in parkinsonian monkeys. *Brain Res* 1988; **444**: 165–76.
- 45 Mallet N, Ballion B, Le Moine C, Gonon F. Cortical inputs and GABA interneurons imbalance projection neurons in the striatum of parkinsonian rats. *J Neurosci* 2006; **26**: 3875–84.
- 46 Taverna S, Ilijic E, Surmeier DJ. Recurrent collateral connections of striatal medium spiny neurons are disrupted in models of Parkinson's disease. *J Neurosci* 2008; **28**: 5504–12.
- 47 Calabresi P, Gubellini P, Centonze D, et al. Dopamine and cAMP-regulated phosphoprotein 32 kDa controls both striatal long-term depression and long-term potentiation, opposing forms of synaptic plasticity. *J Neurosci* 2000; **20**: 8443–51.
- 48 Dejean C, Gross CE, Bioulac B, Boraud T. Dynamic changes in the cortex-basal ganglia network after dopamine depletion in the rat. *J Neurophysiol* 2008; **100**: 385–96.
- 49 Hammond C, Bergman H, Brown P. Pathological synchronization in Parkinson's disease: networks, models and treatments. *Trends Neurosci* 2007; **30**: 357–64.
- 50 Eusebio A, Pogossyan A, Wang S, et al. Resonance in subthalamo-cortical circuits in Parkinson's disease. *Brain* 2009; **132**: 2139–50.
- 51 Brown P. Oscillatory nature of human basal ganglia activity: relationship to the pathophysiology of Parkinson's disease. *Mov Disord* 2003; **18**: 357–63.
- 52 Alonso-Frech F, Zamarbide I, Alegre M, et al. Slow oscillatory activity and levodopa-induced dyskinesias in Parkinson's disease. *Brain* 2006; **129**: 1748–57.
- 53 Gross C, Feger J, Seal J, Haramburu P, Bioulac B. Neuronal activity in area 4 and movement parameters recorded in trained monkeys after unilateral lesion of the substantia nigra. *Exp Brain Res* 1983; **7**: 181–93.
- 54 Mink JW, Thach WT. Basal ganglia motor control. II. Late pallidal timing relative to movement onset and inconsistent pallidal coding of movement parameters. *J Neurophysiol* 1991; **65**: 301–29.
- 55 Escola L, Michelet T, Macia F, et al. Disruption of information processing in the supplementary motor area of the MPTP-treated monkey: a clue to the pathophysiology of akinesia? *Brain* 2003; **126**: 95–114.
- 56 Kita H, Tachibana Y, Nambu A, Chiken S. Balance of monosynaptic excitatory and disynaptic inhibitory responses of the globus pallidus induced after stimulation of the subthalamic nucleus in the monkey. *J Neurosci* 2005; **25**: 8611–19.
- 57 Nambu A, Tokuno H, Hamada I, et al. Excitatory cortical inputs to pallidal neurons via the subthalamic nucleus in the monkey. *J Neurophysiol* 2000; **84**: 289–300.
- 58 Mortimer JA, Webster DD. Evidence for a quantitative association between EMG stretch responses and Parkinsonian rigidity. *Brain Res* 1979; **162**: 169–73.
- 59 Delwaide PJ, Pepin JL, Maertens de Noordhout A. Short-latency autogenic inhibition in patients with Parkinsonian rigidity. *Ann Neurol* 1991; **30**: 83–89.
- 60 Rothwell JC, Obeso JA, Traub MM, Marsden CD. The behaviour of the long-latency stretch reflex in patients with Parkinson's disease. *J Neurol Neurosurg Psychiatry* 1983; **46**: 35–44.
- 61 Lefaucheur JP. Motor cortex dysfunction revealed by cortical excitability studies in Parkinson's disease: influence of antiparkinsonian treatment and cortical stimulation. *Clin Neurophysiol* 2005; **116**: 244–53.
- 62 Cantello R, Gianelli M, Civardi C, Mutani R. Pathophysiology of Parkinson's disease rigidity. Role of corticospinal motor projections. *Adv Neurol* 1996; **69**: 129–33.
- 63 Mir P, Matsunaga K, Gilio F, et al. Dopaminergic drugs restore facilitatory premotor-motor interactions in Parkinson disease. *Neurology* 2005; **64**: 1906–12.
- 64 Delwaide PJ, Pepin JL, Maertens de Noordhout A. The audiospinal reaction in parkinsonian patients reflects functional changes in reticular nuclei. *Ann Neurol* 1993; **33**: 63–69.
- 65 Rodriguez MC, Guridi OJ, Alvarez L, et al. The subthalamic nucleus and tremor in Parkinson's disease. *Mov Disord* 1998; **13** (suppl 3): 111–18.
- 66 Hirai T, Miyazaki M, Nakajima H, et al. The correlation between tremor characteristics and the predicted volume of effective lesions in stereotaxic nucleus ventralis intermedius thalamotomy. *Brain* 1983; **106**: 1001–18.
- 67 Rivlin-Etzion M, Marmor O, Saban G, et al. Low-pass filter properties of basal ganglia cortical muscle loops in the normal and MPTP primate model of parkinsonism. *J Neurosci* 2008; **28**: 633–49.
- 68 Bevan MD, Magill PJ, Terman D, et al. Move to the rhythm: oscillations in the subthalamic nucleus-external globus pallidus network. *Trends Neurosci* 2002; **25**: 525–31.
- 69 Garcia-Cabezas MA, Martinez-Sanchez P, Sanchez-Gonzalez MA, et al. Dopamine innervation in the thalamus: monkey versus rat. *Cereb Cortex* 2009; **19**: 424–34.

- 70 Lanciego JL, Gonzalo N, Castle M, et al. Thalamic innervation of striatal and subthalamic neurons projecting to the rat entopeduncular nucleus. *Eur J Neurosci* 2004; **19**: 1267–77.
- 71 Otsuka M, Ichiya Y, Kuwabara Y, et al. Differences in the reduced 18F-Dopa uptakes of the caudate and the putamen in Parkinson's disease: correlations with the three main symptoms. *J Neurol Sci* 1996; **136**: 169–73.
- 72 Vidailhet M, Jedynak CP, Pollak P, Agid Y. Pathology of symptomatic tremors. *Mov Disord* 1998; **13** (suppl 3): 49–54.
- 73 Foltynie T, Brayne CE, Robbins TW, Barker RA. The cognitive ability of an incident cohort of Parkinson's patients in the UK. The CamPaIGN study. *Brain* 2004; **127**: 550–60.
- 74 Muslimovic D, Post B, Speelman JD, Schmand B. Cognitive profile of patients with newly diagnosed Parkinson's disease. *Neurology* 2005; **65**: 1239–45.
- 75 Elgh E, Domellof M, Linder J, Edstrom M, Stenlund H, Forsgren L. Cognitive function in early Parkinson's disease: a population-based study. *Eur J Neurol* 2009; published online June 15. DOI:10.1111/j.1468-1331.2009.02707.x.
- 76 Taylor AE, Saint-Cyr JA, Lang AE. Frontal lobe dysfunction in Parkinson's disease. The cortical focus of neostriatal outflow. *Brain* 1986; **109**: 845–83.
- 77 Owen AM, James M, Leigh PN, et al. Fronto-striatal cognitive deficits at different stages of Parkinson's disease. *Brain* 1992; **115**: 1727–51.
- 78 Cools R, Barker RA, Sahakian BJ, Robbins TW. Mechanisms of cognitive set flexibility in Parkinson's disease. *Brain* 2001; **124**: 2503–12.
- 79 Dirnberger G, Frith CD, Jahanshahi M. Executive dysfunction in Parkinson's disease is associated with altered pallidal-frontal processing. *Neuroimage* 2005; **25**: 588–99.
- 80 Brown RG, Marsden CD. Dual task performance and processing resources in normal subjects and patients with Parkinson's disease. *Brain* 1991; **114**: 215–31.
- 81 Brown RG, Soliveri P, Jahanshahi M. Executive processes in Parkinson's disease—random number generation and response suppression. *Neuropsychologia* 1998; **36**: 1355–62.
- 82 Brown RG, Marsden CD. An investigation of the phenomenon of "set" in Parkinson's disease. *Mov Disord* 1988; **3**: 152–61.
- 83 Levin BE, Llabre MM, Reisman S, et al. Visuospatial impairment in Parkinson's disease. *Neurology* 1991; **41**: 365–69.
- 84 Lees AJ, Smith E. Cognitive deficits in the early stages of Parkinson's disease. *Brain* 1983; **106**: 257–70.
- 85 Whittington CJ, Podd J, Kan MM. Recognition memory impairment in Parkinson's disease: power and meta-analyses. *Neuropsychology* 2000; **14**: 233–46.
- 86 Wilkinson L, Lagnado DA, Quallo M, Jahanshahi M. The effect of feedback on non-motor probabilistic classification learning in Parkinson's disease. *Neuropsychologia* 2008; **46**: 2683–95.
- 87 Wilkinson L, Jahanshahi M. The striatum and probabilistic implicit sequence learning. *Brain Res* 2007; **1137**: 117–30.
- 88 Cooper JA, Sagar HJ, Doherty SM, et al. Different effects of dopaminergic and anticholinergic therapies on cognitive and motor function in Parkinson's disease. A follow-up study of untreated patients. *Brain* 1992; **115**: 1701–25.
- 89 Gotham AM, Brown RG, Marsden CD. 'Frontal' cognitive function in patients with Parkinson's disease 'on' and 'off' levodopa. *Brain* 1988; **111**: 299–321.
- 90 Cools R, Altamirano L, D'Esposito M. Reversal learning in Parkinson's disease depends on medication status and outcome valence. *Neuropsychologia* 2006; **44**: 1663–73.
- 91 Swainson R, Rogers RD, Sahakian BJ, et al. Probabilistic learning and reversal deficits in patients with Parkinson's disease or frontal or temporal lobe lesions: possible adverse effects of dopaminergic medication. *Neuropsychologia* 2000; **38**: 596–612.
- 92 Bruck A, Portin R, Lindell A, et al. Positron emission tomography shows that impaired frontal lobe functioning in Parkinson's disease is related to dopaminergic hypofunction in the caudate nucleus. *Neurosci Lett* 2001; **311**: 81–84.
- 93 Marie RM, Barre L, Dupuy B, et al. Relationships between striatal dopamine denervation and frontal executive tests in Parkinson's disease. *Neurosci Lett* 1999; **260**: 77–80.
- 94 Broussolle E, Dentresangle C, Landais P, et al. The relation of putamen and caudate nucleus 18F-Dopa uptake to motor and cognitive performances in Parkinson's disease. *J Neurol Sci* 1999; **166**: 141–51.
- 95 Scatton B, Javoy-Agid F, Rouquier L, et al. Reduction of cortical dopamine, noradrenaline, serotonin and their metabolites in Parkinson's disease. *Brain Res* 1983; **275**: 321–28.
- 96 Rakshi JS, Uema T, Ito K, et al. Frontal, midbrain and striatal dopaminergic function in early and advanced Parkinson's disease: a 3D [(18)F]dopa-PET study. *Brain* 1999; **122**: 1637–50.
- 97 Owen AM, Doyon J, Dagher A, et al. Abnormal basal ganglia outflow in Parkinson's disease identified with PET. Implications for higher cortical functions. *Brain* 1998; **121**: 949–65.
- 98 Dagher A, Owen AM, Boecker H, Brooks DJ. The role of the striatum and hippocampus in planning: a PET activation study in Parkinson's disease. *Brain* 2001; **124**: 1020–32.
- 99 Cools R, Stefanova E, Barker RA, et al. Dopaminergic modulation of high-level cognition in Parkinson's disease: the role of the prefrontal cortex revealed by PET. *Brain* 2002; **125**: 584–94.
- 100 Monchi O, Petrides M, Mejia-Constrain B, Strafella AP. Cortical activity in Parkinson's disease during executive processing depends on striatal involvement. *Brain* 2007; **130**: 233–44.
- 101 Decamp E, Schneider JS. Attention and executive function deficits in chronic low-dose MPTP-treated non-human primates. *Eur J Neurosci* 2004; **20**: 1371–78.
- 102 Schneider JS. Chronic exposure to low doses of MPTP. II. Neurochemical and pathological consequences in cognitively-impaired, motor asymptomatic monkeys. *Brain Res* 1990; **534**: 25–36.
- 103 Dubois B, Danze P, Pillon B, Cusimano G, Lhermite F, Agid Y. Cholinergic-dependent cognitive deficits in Parkinson's disease. *Ann Neurol* 1987; **22**: 26–30.
- 104 Dubois B, Pillon B, Lhermite F, Agid Y. Cholinergic deficiency and frontal dysfunction in Parkinson's disease. *Ann Neurol* 1990; **28**: 117–21.
- 105 Calabresi P, Picconi B, Parnetti L, Di Filippo M. A convergent model of cognitive dysfunctions in Parkinson's disease: the critical dopamine-acetylcholine synaptic balance. *Lancet Neurol* 2006; **5**: 974–83.
- 106 Menza MA, Golbe LI, Cody RA, Forman NE. Dopamine-related personality traits in Parkinson's disease. *Neurology* 1993; **43**: 505–08.
- 107 Glosser G, Clark C, Freundlich B, et al. A controlled investigation of current and premorbid personality: characteristics of Parkinson's disease patients. *Mov Disord* 1995; **10**: 201–06.
- 108 Kulisevsky J, Pagonabarraga J, Pascual-Sedano B, et al. Prevalence and correlates of neuropsychiatric symptoms in Parkinson's disease without dementia. *Mov Disord* 2008; **23**: 1889–96.
- 109 Voon V, Fernagut P-O, Wickens J, et al. Chronic dopaminergic stimulation in Parkinson's disease: from dyskinesias to impulse control disorders. *Lancet Neurol* 2009; **8**: 1140–49.
- 110 Aarsland D, Bronnick K, Alves G, et al. The spectrum of neuropsychiatric symptoms in patients with early untreated Parkinson's disease. *J Neurol Neurosurg Psychiatry* 2009; **80**: 928–30.
- 111 Bodi N, Keri S, Nagy H, et al. Reward-learning and the novelty-seeking personality: a between- and within-subjects study of the effects of dopamine agonists on young Parkinson's patients. *Brain* 2009; **132**: 2385–95.
- 112 Martinez-Martin P, Carod-Artal FJ, da Silveira Ribeiro L, et al. Longitudinal psychometric attributes, responsiveness, and importance of change: an approach using the SCOPA-psychosocial questionnaire. *Mov Disord* 2008; **23**: 1516–23.
- 113 Reijnders JS, Ehrt U, Weber WE, et al. A systematic review of prevalence studies of depression in Parkinson's disease. *Mov Disord* 2008; **23**: 183–89.
- 114 Schrag A, Jahanshahi M, Quinn N. What contributes to quality of life in patients with Parkinson's disease? *J Neurol Neurosurg Psychiatry* 2000; **69**: 308–12.
- 115 Leentjens AF, Dujardin K, Marsh L, et al. Apathy and anhedonia rating scales in Parkinson's disease: critique and recommendations. *Mov Disord* 2008; **23**: 2004–14.

- 116 Pedersen KF, Larsen JP, Alves G, Aarsland D. Prevalence and clinical correlates of apathy in Parkinson's disease: a community-based study. *Parkinsonism Relat Disord* 2009; **15**: 295–99.
- 117 Zgaljardic DJ, Borod JC, Foldi NS, et al. Relationship between self-reported apathy and executive dysfunction in nondemented patients with Parkinson disease. *Cogn Behav Neurol* 2007; **20**: 184–92.
- 118 Lauterbach EC. The neuropsychiatry of Parkinson's disease. *Minerva Med* 2005; **96**: 155–73.
- 119 Leentjens AF, Dujardin K, Marsh L, et al. Anxiety rating scales in Parkinson's disease: critique and recommendations. *Mov Disord* 2008; **23**: 2015–25.
- 120 Cummings JL, Diaz C, Levy M, et al. Neuropsychiatric syndromes in neurodegenerative disease: frequency and significance. *Semin Clin Neuropsychiatry* 1996; **1**: 241–47.
- 121 Deblieck C, Wu AD. Neuroimaging of nonmotor features of Parkinson's disease. *Rev Neurol Dis* 2008; **5**: 125–33.
- 122 Remy P, Doder M, Lees A, et al. Depression in Parkinson's disease: loss of dopamine and noradrenaline innervation in the limbic system. *Brain* 2005; **128**: 1314–22.
- 123 Mayeux R, Stern Y, Williams JB, et al. Clinical and biochemical features of depression in Parkinson's disease. *Am J Psychiatry* 1986; **143**: 756–59.
- 124 Shiba M, Bower JH, Maraganore DM, et al. Anxiety disorders and depressive disorders preceding Parkinson's disease: a case-control study. *Mov Disord* 2000; **15**: 669–77.
- 125 Maricle RA, Nutt JG, Carter JH. Mood and anxiety fluctuation in Parkinson's disease associated with levodopa infusion: preliminary findings. *Mov Disord* 1995; **10**: 329–32.
- 126 Richard IH, Frank S, McDermott MP, et al. The ups and downs of Parkinson disease: a prospective study of mood and anxiety fluctuations. *Cogn Behav Neurol* 2004; **17**: 201–07.
- 127 Czernecki V, Schupbach M, Yaici S, et al. Apathy following subthalamic stimulation in Parkinson disease: a dopamine responsive symptom. *Mov Disord* 2008; **23**: 964–69.