

Are your MRI contrast agents cost-effective?

Learn more about generic Gadolinium-Based Contrast Agents.



**FRESENIUS
KABI**

caring for life

AJNR

**Alteration of Human Fetal Subplate Layer
and Intermediate Zone During Normal
Development on MR and Diffusion Tensor
Imaging**

E. Widjaja, S. Geibprasert, S.Z. Mahmoodabadi, S. Blaser,
N.E. Brown and P. Shannon

This information is current as
of May 6, 2024.

AJNR Am J Neuroradiol 2010, 31 (6) 1091-1099

doi: <https://doi.org/10.3174/ajnr.A1985>

<http://www.ajnr.org/content/31/6/1091>

ORIGINAL
RESEARCH

E. Widjaja
S. Geibprasert
S.Z. Mahmoodabadi
S. Blaser
N.E. Brown
P. Shannon

Alteration of Human Fetal Subplate Layer and Intermediate Zone During Normal Development on MR and Diffusion Tensor Imaging

BACKGROUND AND PURPOSE: The subplate layer and intermediate zone are the precursors for neonatal white matter. The aims of this study were to evaluate 1) T1 and T2 signal intensity, and 2) FA of subplate and intermediate zone in postmortem fetuses and correlate with histology, and 3) T2 signal intensity of subplate and intermediate zone on antenatal MR imaging.

MATERIALS AND METHODS: Fourteen immersion-fixed normal brains from 18 to 25 gestational weeks underwent 1.5T MR imaging, including DTI and histologic examination. The subplate and intermediate zone were graded on a scale of 1–5 on T1 and T2, and FAs were evaluated and then correlated with age. Seventeen antenatal MR images from 20 to 26 gestational weeks with normal brain were evaluated by using the same grading.

RESULTS: On T1 postmortem MR imaging, subplate has lower signal intensity compared with intermediate zone; subplate signal intensity correlated positively ($r = 0.66$, $P = .012$) with age, and intermediate zone signal intensity correlated negatively ($r = -0.78$, $P = .001$) with age. On T2 postmortem MR imaging, subplate has higher signal intensity compared with intermediate zone and remained persistently high in signal intensity; intermediate zone signal intensity showed moderate correlation ($r = 0.48$, $P = .086$) with age. FA of subplate correlated positively ($r = 0.55$, $P < .001$) with age; FA of intermediate zone correlated negatively ($r = -0.64$, $P < .0001$) with age. On histology, extracellular matrix decreased and cellularity increased in subplate layer, tangentially organized cellularity decreased, and projecting fibers became thicker in intermediate zone with increasing gestation. The findings on T2-weighted antenatal MR imaging were similar to T2-weighted postmortem MR imaging.

CONCLUSIONS: The changes in signal intensity and FA of subplate and intermediate zone in the second trimester reflect microstructural changes on histology.

ABBREVIATIONS: CSF = cerebrospinal fluid; DTI = diffusion tensor imaging; FA = fractional anisotropy; FOV = field of view; HASTE = half-Fourier acquired single-shot turbo spin-echo; ICC = intraclass correlation coefficient; ROI = region of interest; TR = repetition time; TE = echo time

Transient laminar organization occurs during normal development of the fetal cerebrum. The 5-layer laminar compartments can be visualized consistently on postmortem MR imaging in fetuses from 15 to 26 postovulatory weeks, which corresponds to the laminar compartments as delineated by histochemical sections.¹ These laminar compartments include 1) germinal matrix of high T1 signal intensity, 2) periventricular zone of low T1 signal intensity, 3) intermediate zone of moderately high T1 signal intensity, 4) subplate layer of lower T1 signal intensity, and 5) cortical plate of high T1 signal intensity. The marginal zone cannot be visualized on MR imaging as a separate layer from the cortex. The laminar organization of the postmortem fetal brain has been described on T1-weighted images^{1,2} but not on T2-weighted images. Because antenatal fetal MR imaging relies predominantly on T2-weighted imaging for assessment, it is

essential to understand the laminar organization of the fetal cerebrum on T2.

Apart from anatomic evaluation by using T1-weighted imaging, laminar organization can also be visualized on DTI. Maas et al³ have described the laminar organization of the human cerebrum in 24 and 25 week premature infants. On FA maps, the cortical plate has medium anisotropy, the subplate layer has low anisotropy, and the deep to subplate layer, which is composed of the intermediate zone, subventricular zone, periventricular zone, and germinal matrix, was of medium anisotropy. There are currently minimal data on diffusion changes in fetal cerebral lamination in fetuses younger than 24 weeks.^{4,5}

The subplate layer is an important structure for neural migration and axonal guidance and has been found to be selectively vulnerable to hypoxic-ischemic injury in preterm infants.^{6,7} The intermediate zone contains the fetal white matter. Both the subplate layer and intermediate zone are the precursors of neonatal white matter; therefore, it is important to understand the normal changes in the subplate layer and intermediate zone on imaging to detect abnormal white matter development. The aims of this study were to evaluate 1) the signal intensity on T1- and T2-weighted imaging and 2) FA of the subplate layer and intermediate zone in postmortem fetuses in the second trimester and to correlate these findings

Received October 25, 2009; accepted after revision November 4.

From Diagnostic Imaging (E.W., S.G., S.Z.M., S.B., N.E.B), Hospital for Sick Children, Toronto, Canada; and Department of Pathology (P.S.), Mount Sinai Hospital, Toronto, Canada

This work was supported by the Ontario Foundation for Cerebral Palsy and Department of Medical Imaging, University of Toronto, Research and Development Award.

Please address correspondence to Elysa Widjaja, Diagnostic Imaging, Hospital for Sick Children, 555 University Ave, Toronto, ON, M5G 1X8, Canada; e-mail: Elysa.Widjaja@sickkids.ca

DOI 10.3174/ajnr.A1985

with histology. Due to the potential for tissue fixation to affect T1 and/or T2 contrast,⁸⁻¹² we also assessed the signal intensity of the subplate layer and intermediate zone on T2-weighted imaging in antenatal fetal MR images.

Materials and Methods

The study had the approval of the institutional research ethics board, and written informed consent was obtained from parents. The inclusion criteria for the postmortem study were fetuses <30 gestational weeks and normal cerebral lamination as defined by histology. The exclusion criteria were significant tissue autolysis, brain malformation, hemorrhage, or ischemia resulting in disruption of cerebral laminar organization. The gestational age was estimated based on maternal last menstrual period, sonographic assessment ~12 weeks gestational age, as well as sulcation and gyration pattern of the cerebral hemispheres. Fourteen fetuses ranging from 18 to 25 weeks gestational age were included in the study. The fetuses were aborted due to extracranial anomalies.

Antenatal fetal MR imaging performed at our institution was retrospectively reviewed, and 17 fetuses between 20 and 26 weeks gestational age with normal antenatal MR images were recruited. The antenatal MR images were reviewed by 2 pediatric neuroradiologists independently (E.W. and S.B.) to confirm that the brain imaging was normal. The gestational age was estimated based on maternal last menstrual period and sonographic assessment ~12 weeks gestational age. The indications for antenatal fetal MR imaging were suspected extracranial anomalies in 7 fetuses and Dandy-Walker malformation or corpus callosum agenesis in 10 fetuses.

Postmortem MR Imaging and DTI

Postmortem MR imaging was done by using a 1.5T CV/I magnet (GE Healthcare, Milwaukee, Wisconsin) with maximum gradient amplitude and slew rate of 40 mT/m and 150 T/m/s, respectively. Postmortem MR imaging was performed with an 8-channel knee coil following dissection and tissue fixation. Axial, sagittal, and coronal spin-echo T1 (TR, 500 ms; TE, 10 ms; FOV, 16 cm; section thickness, 2 mm; matrix, 320 × 256) and T2 (TR, 4115 ms; TE, 115 ms; FOV, 16 cm; section thickness, 2 mm; matrix, 320 × 256) and axial 3D T1 (TR, 23 ms; TE, 8 ms; FOV, 18 cm; section thickness, 1.0 mm; matrix, 256 × 256) were performed in all 14 cases. DTI was acquired by using single-shot echo-planar imaging (TR, 8300 ms; TE, 99 ms; FOV, 160 mm; section thickness, 2 mm; $b = 700 \text{ mm}^2/\text{s}^2$; NEX, 8; matrix, 128 × 128, 25 directions) in 13 cases. Echo-planar distortion was automatically corrected on the scanner with Functool version 3.1.23 M4HD research mode (GE Medical Systems, Milwaukee, Wisconsin).

Autopsy

The fetal brains were removed at autopsy and immersion fixed for 14 days in formalin/5% acetic acid. Histology was performed by using standard paraffin embedding and sectioned at 6 μm in the coronal plane. Whole mounts were performed by using agar stabilization.¹³ Staining was done with hematoxylin-eosin or cresyl violet. Alcian blue stain was used to demonstrate acid mucopolysaccharide. Vimentin was used to identify cellular processes and radial glia, and neurofilament was used to identify axons. Histology sections were reviewed by a neuropathologist (P.S.).

Antenatal MR Imaging

Antenatal fetal MR imaging was performed at 1.5 T (Magnetom Avanto; Siemens Medical Solutions, Erlangen, Germany) with maximum gradient amplitude and maximum slew rate of 45 mT/m and 200 T/m/s, respectively. HASTE was performed in 3 planes with a body matrix coil by using the following parameters: TR, 1250 ms; TE, 166 ms; FOV, 31 cm; section thickness, 3.5 mm; matrix, 320 × 256.

Postmortem MR Imaging Analysis

The signal intensity of the subplate layer and intermediate zone was graded on T1- and T2-weighted imaging, by 2 raters independently (E.W. and S.G.). The intermediate zone and subplate layer were graded on a scale of 1 to 5 on T1 (1, same signal intensity as CSF; 2, slightly higher signal intensity than CSF; 3, intermediate signal intensity between CSF and cortex; 4, less hyperintense than cortex; 5, same signal intensity as cortex) and on T2 (1, same signal intensity as cortex; 2, slightly higher signal intensity than cortex; 3, intermediate signal intensity between cortex and CSF; 4, less hyperintense than CSF; 5, same signal intensity as CSF).

DTI processing was performed by using DTIStudio V 2.4 (Johns Hopkins University, Baltimore, Maryland).

The DTI raw datasets were fitted to the diffusion tensor equations to yield 6 independent tensor elements^{14,15} and subsequently 3 eigenvalues (λ_1 , λ_2 , and λ_3) and eigenvectors.¹⁶ Maps of FA were then calculated. Two assessors (E.W. and S.Z.M.) placed the ROIs manually and independently on $b = 0$ images and then transposed onto FA map. All ROIs measured 8 voxels in size and were placed in the subplate layer, which was immediately deep to the cortical ribbon. Similar ROIs were also placed in the intermediate zone, adjacent to the lower signal intensity of the germinal matrix on $b = 0$ images, and deep to the subplate layer (Fig 1). The ROIs were placed anteriorly at the level of frontal horn of lateral ventricles and posteriorly at the level of trigones of both hemispheres.

Antenatal MR Imaging Analysis

The signal intensity of the subplate layer and intermediate zone was graded on T2 antenatal MR imaging, by using the same grading scale as for T2 postmortem MR imaging (1, same signal intensity as cortex; 2, slightly higher signal intensity than cortex; 3, intermediate signal intensity between cortex and CSF; 4, less hyperintense than CSF; 5, same signal intensity as CSF). The grading was done by 2 raters independently (E.W. and S.G.).

Statistical Analysis

Data were analyzed by using SAS 9.2 (SAS Institute, Cary, North Carolina). The interrater agreement for grading of signal intensity of the subplate layer and intermediate zone on T1 and T2 postmortem MR imaging was assessed by using κ statistics. The interrater agreement on FA of the subplate layer and intermediate zone was evaluated by using ICC. The interrater agreement on T2 antenatal MR imaging was evaluated by using κ statistics. Kappa values and ICC of 0.00–0.20 indicated poor agreement, 0.21–0.40 fair agreement, 0.41–0.60 moderate agreement, 0.61–0.8 substantial agreement, and 0.81–1.0 nearly perfect agreement. The mean grading of signal intensity and the mean FA of the 2 assessors were used for subsequent analysis.

Spearman correlation was performed between grading of the subplate layer and intermediate zone on T1 and T2 postmortem MR imaging with gestational age. The generalized estimation equation method was used to evaluate the relation of FA on 1 side versus the other side, anterior versus posterior regions, subplate layer versus the

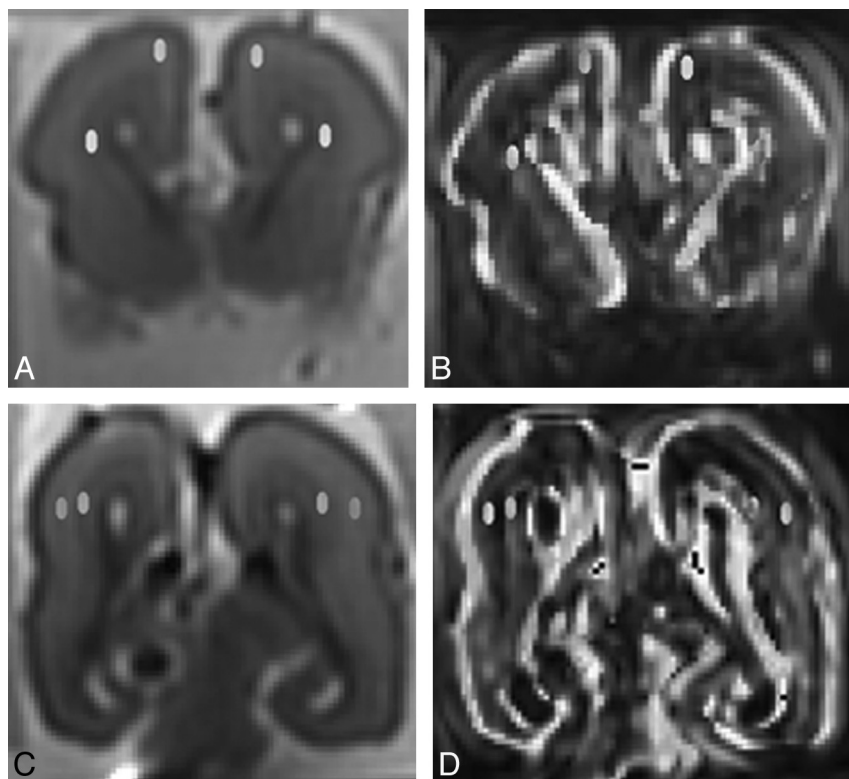


Fig 1. Postmortem coronal (A and C) $b = 0$ images and fractional anisotropy maps (B and D) demonstrating placement of regions of interest in the subplate layer and intermediate zone anteriorly (A and B) and posteriorly (C and D). The corpus callosum has been injured during autopsy.

intermediate zone, and also between FA or the subplate layer and intermediate zone with gestational age. Spearman correlation was performed between grading of the signal intensity of the subplate layer on T1 and T2, and FA of the subplate layer, as well as between grading of the signal intensity of the intermediate zone on T1 and T2 and FA of the intermediate zone on postmortem MR imaging. Spearman correlation was also performed between grading of the subplate layer and intermediate zone on T2 antenatal MR imaging with gestational age. A P value of $<.05$ was considered statistically significant.

Results

Postmortem MR Imaging and DTI

There was substantial to nearly perfect agreement between the 2 raters for the subplate layer on T1 (ICC = 0.73) and T2 (ICC = 1.0), respectively, and nearly perfect agreement for the intermediate zone on T1 (ICC = 1.0) and T2 (ICC = 1.0). There was significant positive correlation between signal intensity of subplate on T1 postmortem MR imaging and gestational age ($r = 0.66$, $P = .012$) (Table). There was significant negative correlation between signal intensity of intermediate zone on T1 postmortem MR imaging and gestational age ($r = -0.78$, $P = .001$). Below 20 weeks gestational age, the intermediate zone was of higher signal intensity on T1 compared with the subplate layer (Fig 2). Between 20 and 23 weeks gestational age, signal intensity gradually decreased in intermediate zone and gradually increased in subplate layer on T1 postmortem MR imaging, such that there was overlap between the signal intensity of intermediate zone and inner portion of subplate layer. After 23 weeks gestational age, the intermediate zone was of lower signal intensity on T1 compared with the subplate layer. There were 2 regions seen in the subplate layer: an outer zone of lower T1 signal intensity and an inner zone of higher T1 signal intensity.

Spearman correlation between signal intensity and fractional anisotropy of subplate layer and intermediate zone on postmortem MR imaging with gestational age, and also between signal intensity of the subplate layer and intermediate zone on antenatal MR imaging with gestational age

			Spearman Correlation with Gestational Age
Postmortem MR imaging			
Signal intensity on T1	Subplate layer		$r = 0.66$, $P = .012$
	Intermediate zone		$r = -0.78$, $P = .001$
Signal intensity on T2	Subplate layer		No correlation, ^a $P > .05$
	Intermediate zone		$r = 0.48$, $P = .086$
Fractional anisotropy	Subplate layer		$r = 0.55$, $P < .001$
	Intermediate zone		$r = -0.64$, $P < .0001$
Antenatal MR imaging			
Signal intensity on T2	Subplate layer		No correlation, ^a $P > .05$
	Intermediate zone		$r = 0.67$, $P = .003$

^a No measurable correlation, as signal intensity of the subplate layer remains constant.

There was no association between signal intensity of subplate on T2 postmortem MR imaging and gestational age ($P > .05$), as signal intensity of subplate remained unchanged on T2 between 18 and 25 weeks gestational age. There was an association between signal intensity of intermediate zone on T2 postmortem MR imaging and gestational age, but this did not reach statistical significance ($r = 0.48$, $P = .086$). The signal intensity of intermediate zone was lower than subplate layer on T2 postmortem MR imaging until ~22–23 weeks (Fig 3). By 25 weeks, the signal intensity of intermediate zone was similar to subplate layer on T2 postmortem MR imaging.

There was moderate to substantial agreement between FA of the subplate layer anteriorly (ICC = 0.49) and posteriorly (ICC = 0.78), respectively. There was nearly perfect and substantial agreement between FA of the intermediate zone anteriorly (ICC = 0.88) and posteriorly (ICC = 0.70), respectively.

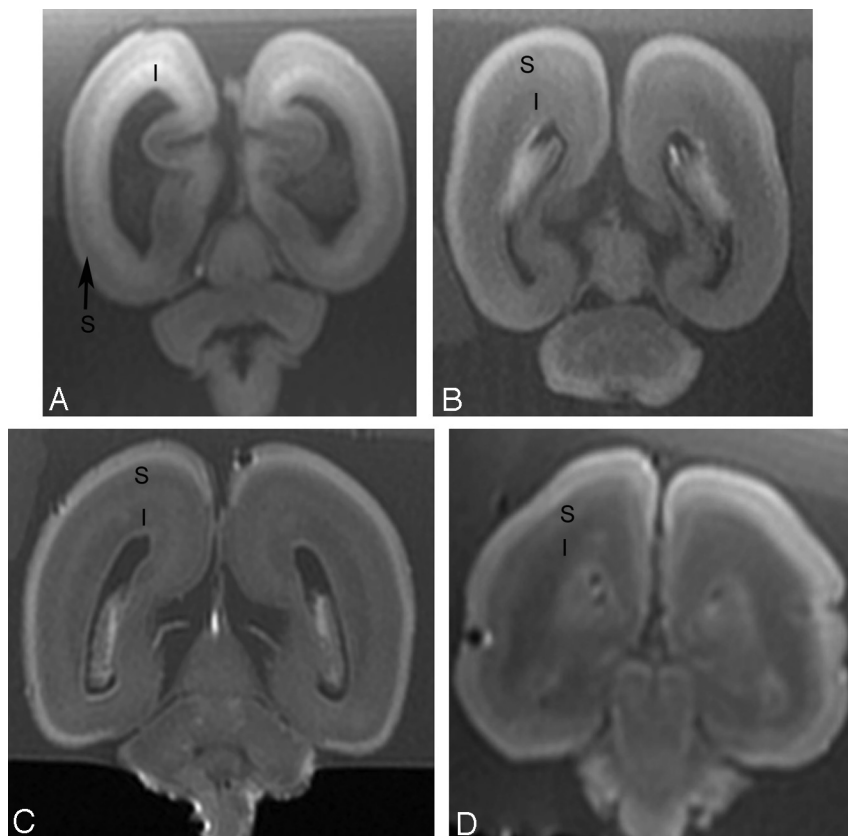


Fig 2. Postmortem coronal T1-weighted images at (A) 18 weeks, (B) 22 weeks, (C) 23 weeks, and (D) 25 weeks gestational age. At 18 gestational weeks, the intermediate zone (I) is of higher T1 signal intensity and the subplate layer (S) is of lower T1 signal intensity. With increasing gestational age, there is a reduction in the high T1 signal intensity of the intermediate zone and an increase in the signal intensity of the subplate layer. At approximately 22 weeks, the distinction between the intermediate zone and subplate layer is decreased on T1.

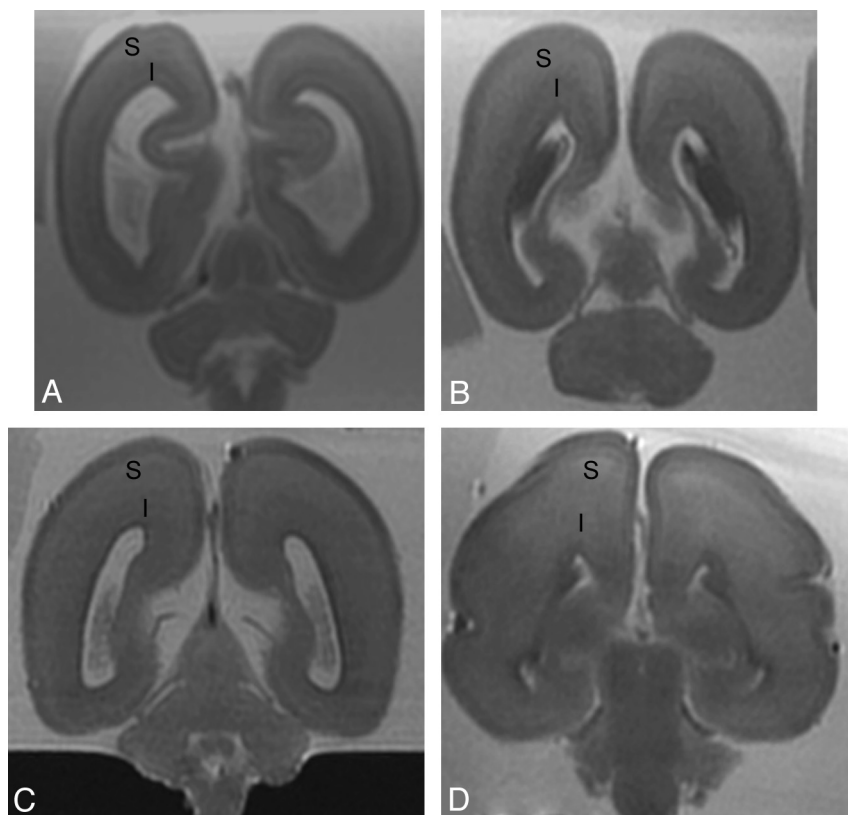


Fig 3. Postmortem coronal T2-weighted images at (A) 18 weeks, (B) 22 weeks, (C) 23 weeks, and (D) 25 weeks gestational age. At 18 gestational weeks, the intermediate zone (I) is of lower T2 signal intensity and the subplate layer (S) is of higher T2 signal intensity. With increasing gestational age, there is an increase in the T2 signal intensity of the intermediate zone, but the subplate layer remains of higher T2 signal intensity with no appreciable signal intensity alteration on visual assessment.

There was no significant difference between FA of the 2 hemispheres ($P > .05$). FA in intermediate zone was higher than subplate layer ($P < .0001$). FA of the anterior subplate layer and intermediate zone was slightly higher compared with the

posterior subplate layer and intermediate zone, but the difference did not reach statistical significance ($P = .09$). There was a positive correlation between FA of subplate layer and gestational age ($r = 0.55$, $P < .001$) and a negative correlation

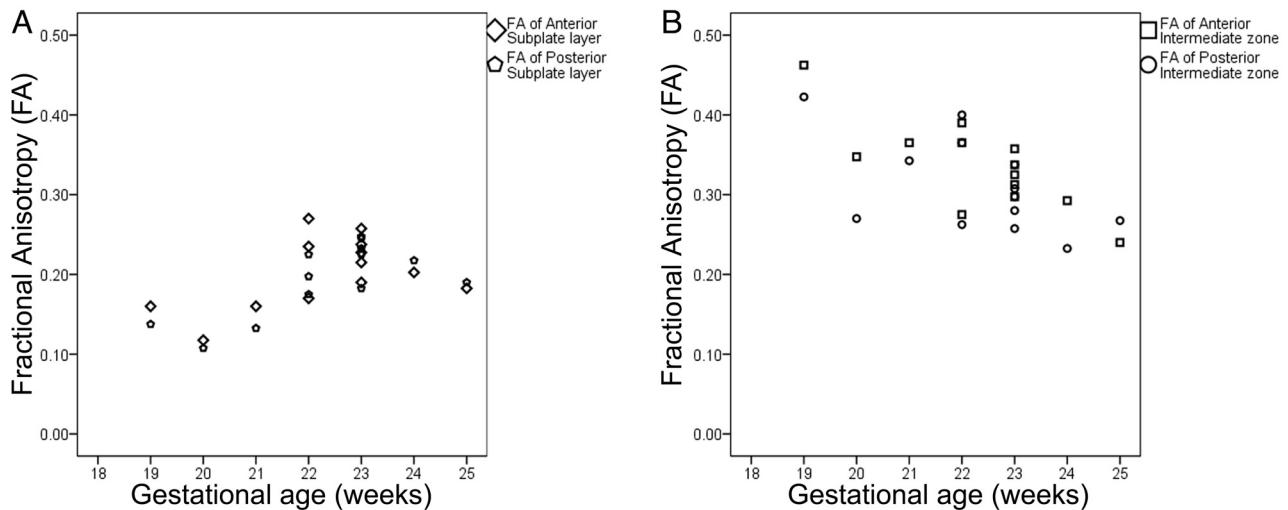


Fig 4. Scatterplots demonstrating fractional anisotropy of (A) subplate layer and (B) intermediate zone anteriorly and posteriorly at different gestational age.

between FA of intermediate zone and gestational age ($r = -0.64$, $P < .0001$) (Fig 4).

There was significant correlation between FA of subplate layer and signal intensity of subplate layer on T1 ($r = 0.58$, $P = .037$). There was no correlation between FA of subplate layer and signal intensity of subplate on T2 postmortem MR imaging, as the signal intensity remained unchanged on T2. There was no significant correlation between FA of intermediate zone and signal intensity of intermediate zone on T1 ($r = 0.41$, $P = .160$) or T2 ($r = -0.33$, $P = .264$) postmortem MR imaging.

Autopsy

The subplate layer was hypocellular and had abundant extracellular matrix at 18 weeks gestational age (Fig 5). With increasing gestation, the subplate layer became more cellular, and the deep subplate merged with the intermediate zone with an increase in the attenuation of stainable cell processes in both the subplate layer and intermediate zone (Fig 6). Stainable acid mucopolysaccharide, which formed most extracellular matrix in the developing brain, was abundant in the subplate layer but was absent in the intermediate zone at 18 weeks (Fig 7). With increasing gestation, the acid mucopolysaccharide increased in the intermediate zone. At 18 weeks, the intermediate zone was highly cellular, particularly the superficial region, which formed an attenuated tangential stripe (Fig 5), separated from the deeper aspects of the intermediate zone by the developing fiber system. As development progressed, the intermediate zone became less cellular as a whole, and the deep projecting fiber system became thicker as visualized on the neurofilament stain (Fig 6). The superficial region of the intermediate zone became harder to distinguish from the subplate layer with increasing gestational age.

Antenatal MR Imaging

There was nearly perfect agreement between the 2 raters for the subplate layer (ICC = 0.88) and intermediate zone (ICC = 1.0) on T2. There was no association between signal intensity of subplate on T2 antenatal MR imaging and gestational age ($P > .05$), as signal intensity of subplate remained unchanged

on T2 between 20 and 26 weeks gestational age. There was significant correlation between signal intensity of intermediate zone on T2 antenatal MR imaging and gestational age ($r = 0.67$, $P = .003$) (Table 1). The signal intensity of intermediate zone was lower than subplate layer on T2 antenatal MR imaging until ~22–23 weeks (Fig 8). By ~25 weeks, the signal intensity of intermediate zone was similar to subplate layer on T2 antenatal MR imaging.

Discussion

The subplate layer contains cells dispersed within the loose plexiform network of fibers and embedded in abundant and hydrophilic extracellular matrix.^{1,17–19} Kostovic et al¹ described low T1 signal intensity in the subplate layer between 15 and 26 postovulatory weeks, and an increase in T1 signal intensity in the subplate layer between 27 and 30 postovulatory weeks in the postmortem brain. The increase in T1 signal intensity in the subplate layer reduced the contrast difference between the subplate layer and intermediate zone. However, the superficial aspect of subplate layer, immediately below the cortical plate, remains visible as a narrow band of low T1 signal intensity, due to the presence of growing thalamocortical fibers. Rados et al²⁰ found the subplate layer attained its developmental peak, with respect to the thickness of the subplate layer, between 27 and 30 postovulatory weeks. However, transient fetal lamination as visualized on postmortem MR imaging reaches prominence between 22 and 26 postovulatory weeks.²⁰ We have found the increase in T1 signal intensity of the subplate layer to have occurred earlier, from ~22 weeks onward in the postmortem brain. The increase in T1 signal intensity of the subplate layer could be related to the reduction in extracellular matrix, increase in cellularity, and increase in stainable cell processes. The reduction in extracellular matrix in the subplate layer occurs after the thalamocortical fibers penetrate into the cortical plate,^{1,21} which was present by 24 postovulatory week. Between 20 and 23 postovulatory weeks, the number of synapses in the subplate layer increases,^{22,23} which could also contribute to the altered T1 signal intensity of the subplate layer.

The intermediate zone is composed of the fetal “white



Fig 5. Photomicrographs of fetal cerebrum at (A) 18, (B) 22, (C) 23, and (D) 25 gestational weeks. Images are composite photographs of a transect of the cerebral mantle, and the images have been rescaled for illustration purposes. All original photography is at $\times 12.5$ original magnification, and the superficial aspect of the brain is on the left with the ventricle on the right. At 18 weeks, the intermediate zone has a very cellular superficial region, which is separated from the deeper aspects of the intermediate zone by the developing fiber systems. In contrast, the subplate layer has an abundant extracellular matrix at 18 weeks gestational age, which decreases with increasing gestation. As development progresses, the intermediate zone becomes less cellular, and the deep projecting fiber system becomes thicker such that the cellular superficial region of the intermediate zone becomes harder to distinguish from the subplate layer.

matter,” which includes large bundles of growing axons, migratory neurons, and immature glial cells.²⁰ Previously, the intermediate zone has been described as having high T1 signal intensity between 18 and 26 postovulatory weeks.¹ The timing of signal intensity alteration of the intermediate zone was not

clear in the literature. The changes in the lamination pattern of the human fetal cerebrum on MR imaging were considered to be predominantly due to changes in the appearance of the subplate layer.¹ However, we have found that alteration in the cerebral lamination from 20 to 25 gestational weeks was

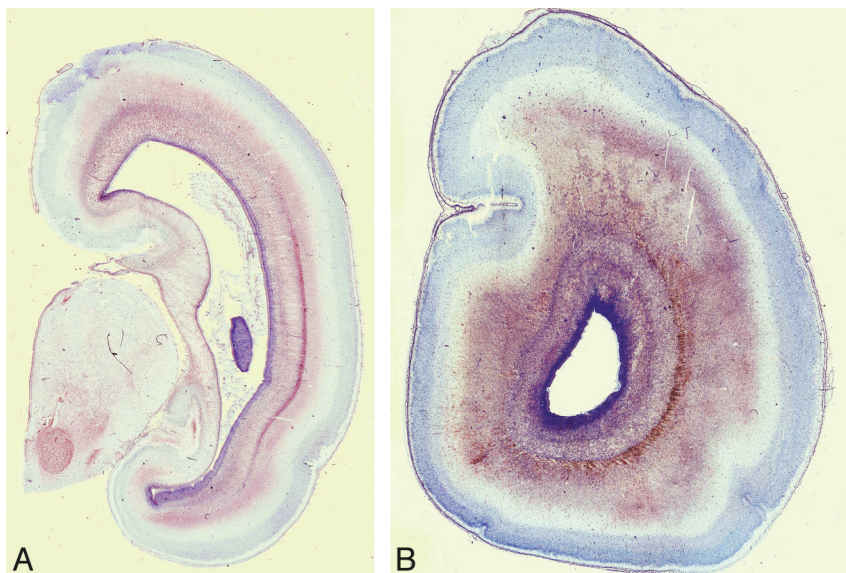


Fig 6. Whole mounts of fetal cerebrum at (A) 18 and (B) 25 gestational weeks stained with neurofilament to demonstrate axons and vimentin to demonstrate cell processes and radial glia. By 25 gestational weeks, the deep subplate merged with the intermediate zone with an increase in cell processes in both the subplate layer and intermediate zone. Neurofilament stain shows increased fibers (reddish brown) within the intermediate zone.

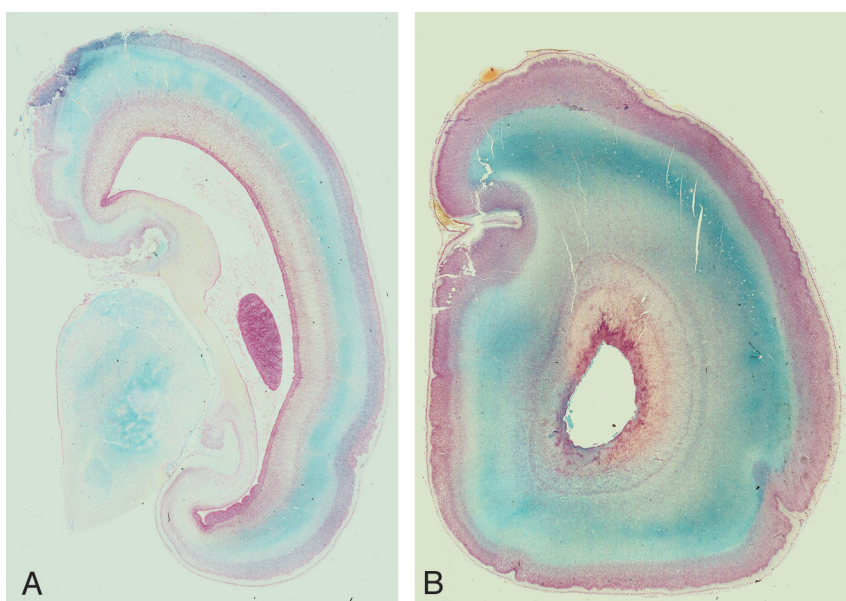


Fig 7. Whole mounts of fetal cerebrum at (A) 18 and (B) 25 gestational weeks stained with Alcian blue to demonstrate acid mucopolysaccharide, which forms most extracellular matrix in the developing brain. At 18 gestational weeks, acid mucopolysaccharide (blue) is abundant in the subplate layer but absent in the intermediate zone. By 25 gestational weeks, acid mucopolysaccharide is present in the intermediate zone.

due to altered signal intensity of both the subplate layer and intermediate zone. There was a gradual reduction of the high T1 signal intensity and increase of the low T2 signal intensity of the intermediate zone from ~22 weeks, which correlated with reduced cellularity, an increase in the thickness of deep projecting fibers, and an increase in acid mucopolysaccharide on histology.

Kostovic et al¹ and Chong et al² have used T1-weighted imaging, whereas we have used both T1- and T2-weighted imaging to evaluate the laminar organization of the post-mortem fetal brain. We have found altered signal intensity in the intermediate zone on both T1- and T2-weighted imaging with increasing gestational age. In the subplate layer, the signal intensity alteration was best appreciated on T1-weighted imaging, but remained unchanged on T2 between 18 and 25 gestational weeks. With increasing T2 signal intensity of the intermediate zone in the postmortem brain, the contrast difference between the subplate layer and intermediate zone was minimal by 25 weeks. We have found similar findings on antenatal T2-weighted MR images. The subplate layer

was of persistently higher T2 signal intensity between 20 and 26 gestational weeks on antenatal MR imaging. The intermediate zone demonstrated lower T2 signal intensity compared with the subplate layer between 20 and 22 gestational weeks, and by 25 gestational weeks there was no contrast difference between the intermediate zone and subplate layer on antenatal MR imaging. Maas et al³ also found difficulty in distinguishing the subplate layer from the intermediate zone on T2 in 2 premature infants at 25 and 27 gestational weeks.

We have found that FA of the subplate layer was lower relative to the intermediate zone. Huang et al²⁴ assessed 2 post-mortem fetuses at 19 and 20 gestational weeks and found reduced anisotropy of the subplate layer relative to the cortex. Maas et al³ evaluated 2 premature infants at 25 and 27 gestational weeks and demonstrated that the subplate layer was of lower anisotropy compared with the intermediate zone, findings similar to ours. Neil et al²⁵ also found lower anisotropy in the subplate layer in premature neonates from 31 to 41 gestational weeks. The higher extracellular matrix in the subplate layer could have contributed to the lower FA. The tangential

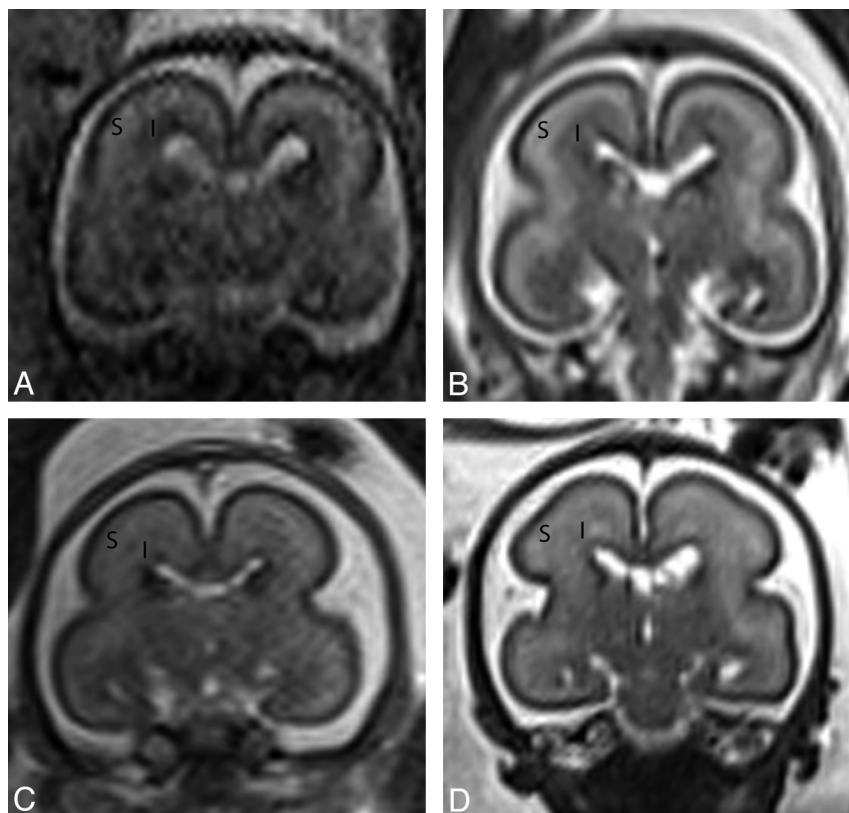


Fig 8. Antenatal coronal T2-weighted images at (A) 20 weeks, (B) 22 weeks, (C) 23 weeks, and (D) 25 weeks gestational age. At 20 gestational weeks, the intermediate zone (I) is of lower T2 signal intensity and the subplate layer (S) is of higher T2 signal intensity. With increasing gestational age, there is an increase in the T2 signal intensity of the intermediate zone, but the subplate layer remains of higher T2 signal intensity with no appreciable signal intensity alteration on visual assessment.

stripes of migratory cells and bundles of fibers in the intermediate zone¹ could have accounted for the higher anisotropy in the fetal white matter, even before the onset of myelination. We have also found a negative correlation between anisotropy of the intermediate zone and gestational age, which could be related to migration of tangential stripes of neurons away from the intermediate zone, an increase in acid mucopolysaccharide, and evolution of radial glia into astrocytes and neuroblasts. There was a significant positive correlation between FA of the subplate layer and gestational age, which could be related to a reduction in extracellular matrix, an increase in migratory neurons, and an increase in cell processes.

Gupta et al⁴ evaluated 15 unfixed postmortem fetal brains from 15 to 37 gestational weeks and have found that FA values in the subplate layer showed an inverse correlation with gestational age, but this did not reach statistical significance. They did not find a significant correlation between FA in the intermediate zone and gestational age. Trivedi et al⁵ evaluated 50 unfixed postmortem fetal brains from 12 to 42 weeks and demonstrated decreasing FA in the subplate layer and increasing FA in the intermediate zone with gestational age; however, it was not clear if these changes were statistically significant. Of the 50 fetuses in the cohort, they have assessed FA of the subplate layer and intermediate zone in 15 fetuses from 17 to 30 gestational weeks, and of these cases, approximately half were less than 24 gestational weeks. In contrast to the findings by Gupta et al⁴ and Trivedi et al,⁵ we have found increasing FA in the subplate layer and decreasing FA in the intermediate zone in the second trimester. In our study, we have evaluated fetuses over a narrower age range within the second trimester. In the study by Gupta et al,⁴ the greater number of fetuses in the third trimester, which corresponded to the period of

subplate dissolution, may have accounted for the reduced anisotropy of the subplate layer. Further development, thickening, and organization of projecting axons may lead to increased FA in the intermediate zone in the third trimester.

One of the concerns of extrapolating data from postmortem MR imaging of fixed brain was that tissue fixation may alter the signal intensity characteristics of the brain on either T1- or T2-weighted imaging. Formaldehyde fixation of tissue promotes membrane protein cross-linking to each other and/or to adjacent proteins located in the intra- and extracellular spaces,²⁶⁻²⁸ and immobilization of water molecules and may lead to a reduction of T1 and T2 values.⁸⁻¹² We have not quantified T1 or T2 values in the postmortem fetal MR images, but we have visually assessed the relative signal intensity of the subplate layer and intermediate zone relative to cortex and CSF. Using the same grading system as on postmortem MR imaging, we have assessed the subplate layer and intermediate zone on T2-weighted antenatal MR images and have found similar findings. As T1-weighted imaging is not routinely performed on antenatal MR imaging, we have not assessed the T1 signal intensity alteration of the subplate layer and intermediate zone on antenatal MR imaging. The observed signal intensity alteration of the subplate layer and intermediate zone on T1-weighted postmortem MR imaging is likely to be a marker of microstructural changes that occur secondary to brain development rather than fixation artifacts, as the signal intensity alterations on postmortem T2-weighted imaging corresponded to those observed on antenatal T2-weighted imaging.

DTI studies in postmortem brains raised 2 concerns; first, the effects of death and second, the effects of tissue fixation on DTI indices. Kim et al²⁹ demonstrated that there was no sig-

nificant alteration in FA in mouse spinal cord white matter in vivo before death, in situ 10 hours after death, and ex vivo 15 weeks after immersion fixation. Sun et al^{30,31} found that tissue fixation resulted in reduction in trace of 30%–80% but no significant alteration in anisotropy level. Shepherd et al¹² also showed that tissue fixation resulted in increase in extracellular apparent diffusion coefficient. Sun et al³² evaluated the optic nerves of mice and found that between in vivo and prefixed postmortem, axial and radial diffusivity decreased by 50%–70%, and from prefixed postmortem to fixed postmortem, axial and radial diffusivity decreased by up to 50%. Because tissue fixation may influence trace, axial, and radial diffusivity, any observed changes in trace, axial, and radial diffusivity secondary to increasing gestation could potentially be confounded by changes related to tissue fixation. We have therefore used FA to detect changes in the subplate layer and intermediate zone, as FA was less likely to be affected by tissue fixation.^{29–31} However, caution is advised in directly extrapolating FA values from postmortem specimens to in vivo cases.

In summary, we have found signal intensity alteration on T1- and T2-weighted imaging as well as FA of the subplate layer and intermediate zone on postmortem MR imaging, which corresponded to changes in a variety of histologic parameters, including extracellular matrix, cellularity, and axons between 18 and 25 gestational weeks. The observed signal intensity alteration is unlikely to be due to fixation artifacts as we observed similar signal intensity alteration on antenatal T2-weighted imaging as on postmortem T2-weighted imaging. Understanding the normal changes in the subplate layer and intermediate zone is important before such knowledge can be incorporated in the antenatal assessment of normal development, white matter injury in fetuses from ischemia or infection, as well as abnormal white matter development in association with brain malformations.

References

- Kostovic I, Judas M, Rados M, et al. Laminar organization of the human fetal cerebrum revealed by histochemical markers and magnetic resonance imaging. *Cereb Cortex* May 2002;12:536–44
- Chong BW, Babcock CJ, Salamat MS, et al. A magnetic resonance template for normal neuronal migration in the fetus. *Neurosurgery* 1996;39:110–16
- Maas LC, Mukherjee P, Carballido-Gamio J, et al. Early laminar organization of the human cerebrum demonstrated with diffusion tensor imaging in extremely premature infants. *Neuroimage* 2004;22:1134–40
- Gupta RK, Hasan KM, Trivedi R, et al. Diffusion tensor imaging of the developing human cerebrum. *J Neurosci Res* 2005;81:172–78
- Trivedi R, Husain N, Rathore RK, et al. Correlation of diffusion tensor imaging with histology in the developing human frontal cerebrum. *Dev Neurosci* 2009;31:487–96
- Volpe JJ. Encephalopathy of prematurity includes neuronal abnormalities. *Pediatrics* 2005;116:221–25
- McQuillen PS, Ferriero DM. Perinatal subplate neuron injury: implications for cortical development and plasticity. *Brain Pathol* 2005;15:250–60
- Dawe RJ, Bennett DA, Schneider JA, et al. Postmortem MRI of human brain hemispheres: T2 relaxation times during formaldehyde fixation. *Magn Reson Med* 2009;61:810–18
- Grinberg LT, Amaro E Jr, Teipel S, et al. Assessment of factors that confound MRI and neuropathological correlation of human postmortem brain tissue. *Cell Tissue Bank* 2008;9:195–203
- Tovi M, Ericsson A. Measurements of T1 and T2 over time in formalin-fixed human whole-brain specimens. *Acta Radiol* 1992;33:400–04
- Pfefferbaum A, Sullivan EV, Adalsteinsson E, et al. Postmortem MR imaging of formalin-fixed human brain. *Neuroimage* 2004;21:1585–95
- Shepherd TM, Thelwall PE, Stanis GJ, et al. Aldehyde fixative solutions alter the water relaxation and diffusion properties of nervous tissue. *Magn Reson Med* 2009;62:26–34
- Game M. Embedding in agar/paraffin. In: Masson P, ed. *Histological Techniques*. New York: Springer; 1976:95
- Pierpaoli C, Basser PJ. Toward a quantitative assessment of diffusion anisotropy. *Magn Reson Med* 1996;36:893–906
- Pierpaoli C, Jezzard P, Basser PJ, et al. Diffusion tensor MR imaging of the human brain. *Radiology* 1996;201:637–48
- Basser PJ, Mattiello J, LeBihan D. MR diffusion tensor spectroscopy and imaging. *Biophys J* 1994;66:259–67
- Pearlman AL, Sheppard AM. Extracellular matrix in early cortical development. *Prog Brain Res* 1996;108:117–34
- Judas M, Milosevic NJ, Rasin MR, et al. Complex patterns and simple architects: molecular guidance cues for developing axonal pathways in the telencephalon. *Prog Mol Subcell Biol* 2003;32:1–32
- Margolis RU, Margolis RK. Chondroitin sulfate proteoglycans as mediators of axon growth and pathfinding. *Cell Tissue Res* 1997;290:343–48
- Rados M, Judas M, Kostovic I. In vitro MRI of brain development. *Eur J Radiol* 2006;57:187–98
- Kostovic I, Jovanov-Milosevic N. The development of cerebral connections during the first 20–45 weeks' gestation. *Semin Fetal Neonatal Med* 2006;11:415–22
- Molliver ME, Kostovic I, van der Loos H. The development of synapses in cerebral cortex of the human fetus. *Brain Res* 1973;50:403–07
- Kostovic I, Rakic P. Developmental history of the transient subplate zone in the visual and somatosensory cortex of the macaque monkey and human brain. *J Comp Neurol* 1990;297:441–70
- Huang H, Zhang J, Wakana S, et al. White and gray matter development in human fetal, newborn and pediatric brains. *Neuroimage* 2006;33:27–38
- Neil JJ, Shiran SI, McKinsty RC, et al. Normal brain in human newborns: apparent diffusion coefficient and diffusion anisotropy measured by using diffusion tensor MR imaging. *Radiology* 1998;209:57–66
- Fishbein KW, Gluzband YA, Kaku M, et al. Effects of formalin fixation and collagen cross-linking on T2 and magnetization transfer in bovine nasal cartilage. *Magn Reson Med* 2007;57:1000–11
- Metz B, Kersten GF, Hoogerhout P, et al. Identification of formaldehyde-induced modifications in proteins: reactions with model peptides. *J Biol Chem* 2004;279:6235–43
- Puchtler H, Meloan SN. On the chemistry of formaldehyde fixation and its effects on immunohistochemical reactions. *Histochemistry* 1985;82:201–04
- Kim JH, Trinkaus K, Ozcan A, et al. Postmortem delay does not change regional diffusion anisotropy characteristics in mouse spinal cord white matter. *NMR Biomed* 2007;20:352–59
- Sun SW, Neil JJ, Liang HF, et al. Formalin fixation alters water diffusion coefficient magnitude but not anisotropy in infarcted brain. *Magn Reson Med* 2005;53:1447–51
- Sun SW, Neil JJ, Song SK. Relative indices of water diffusion anisotropy are equivalent in live and formalin-fixed mouse brains. *Magn Reson Med* 2003;50:743–48
- Sun SW, Liang HF, Xie M, et al. Fixation, not death, reduces sensitivity of DTI in detecting optic nerve damage. *Neuroimage* 2009;44:611–19