

Title

Water management and intensification of rice farming at the late-Neolithic site of Maoshan, Lower Yangtze River

Yijie Zhuang¹, Pin Ding², Charles French³

1: Yijie Zhuang, Institute of Archaeology, University College London, 31-34 Gordon Square, WC1H 0PY, London, UK, email: y.zhuang@ucl.ac.uk, telephone: 0044 (0) 20 7670 1092

2: Zhejiang Provincial Institute for Cultural Relics and Archaeology, 26 Jiashan Xincun, Jiashan Rd, Hangzhou, China, 310014, email: hzdp66@sina.com

3: McBurney Laboratory for Geoarchaeology, University of Cambridge, Downing Street, Cambridge, CB2 3DZ, UK, email: caif2@cam.ac.uk, telephone: 0044 (0) 1223 333533

Corresponding author: Yijie Zhuang, Institute of Archaeology, University College London, 31-34 Gordon Square, WC1H 0PY, London, UK, email: y.zhuang@ucl.ac.uk, telephone: 0044 (0) 20 7670 1092

Abstract:

Intensifying water management for rice farming and related land use involves with increasing labour investment in transforming local landscapes. By applying geoarchaeological investigation at the well preserved late Neolithic rice paddy site of Maoshan, Lower Yangtze River during the excavation, this study provides detailed information of the changing relationship between water management, agricultural intensification, environmental change and social evolution during the critical time period of the late Holocene. It illustrates that the intensification of rice farming was facilitated by successful water management and landscape management in most time, and it was the combined effect of gradually increasing aridity, fluctuating sea-level patterns, and increasing labour investment in water management that led to the eventual abandonment of the paddy field at the end of the Neolithic in this region. This study therefore draws attention from large-scale sites to small-scale, but economically important sites in enhancing our understanding of the dynamic relationship between human societies and environmental changes during the late Holocene in this region.

Key words: water management; agricultural intensification; rice farming; Lower Yangtze River; geoarchaeology; paddy field

1. Introduction

Liangzhu (5,300-4,200 cal. BP), the late Neolithic culture, in the lower Yangtze River, created one of the most fascinating cultures in Chinese prehistory. A large number of jade artefacts with intriguing patterns and amazing quality were produced (Rawson, 1995; Forsyth, 1995; Wang, 1998b; Wang, 1998a; Qin, 2013), extravagant mortuary practice was developed (Qin, 2013; Liu and Chen, 2012: Chapter 7), and more importantly, a well-structured site, the Liangzhu site, was constructed, surrounded by many contemporary satellite settlements (ZPICRA, 1999). Parallel with these are the massive investment in water management and gradually intensifying rice agriculture.

In the Lower Yangtze River, rice was consumed at the beginning of the Holocene (Liu et al., 2007). The domestication of rice, however, was a prolonged process (Fuller et al., 2007; Fuller et al., 2009). It occurred in this region between 6900-6600 cal. years ago as evidenced by the increasing proportion of nonshattering domesticated rice (*Oryza sativa*) spikelet bases in archaeobotanical assemblages (Fuller et al., 2009), along with the establishment of early farming fields as supported by the presence of arable weeds in these assemblages (Fuller et al. 2009) and related phytolith analysis (Zheng et al., 2009). However, the palaeo-diet was still largely dependent on the consumption of wild gathered and hunted foods (Qin et al., 2010). It was probably not until the Late Holocene Liangzhu period that we see rice farming became overridingly important in economic subsistence.

While systematic studies on stone tools potentially used for farming continue to provide new insights to our understanding on technological innovations in relation to agricultural development in this region through time (ongoing research by L. Qin and S. Nakamura), the excavation at a well-preserved rice paddy field site of Maoshan offers an excellent opportunity to assess the scale, practice and evolution of water management and rice farming of the Liangzhu Culture. This paper presents important discoveries of the excavation and results of the geoarchaeological investigation at Maoshan. The geoarchaeology, which combines environmental studies with archaeology, enables a closer examination of palaeo-hydrological and infield-ecological changes at Maoshan. Particularly, the high-resolution micromorphological information of cultivated soils and the underlying and overlying horizons at Maoshan reveals that the intensification of rice cultivation in the late Liangzhu period was facilitated by successful water management in most times. In addition, there is also clear micromorphological evidence of land use management such as the use of fire, land clearance, and manuring.

This research thus also promotes the integration of different lines of palaeo-environmental evidence with variable scales on the relationship of palaeo-environmental change, development of rice farming and evolution of the Liangzhu culture in this area.

2. Environmental backgrounds and geological settings

Holocene sea-level change and Asian summer monsoon are the two main factors which have exerted fundamental impacts in modifying local ecological conditions in the studied area, covering Hangzhou Bay, the Yangtze River Delta and Taihu Lake to the north (Figure 1a). The summer monsoon brings large amounts of rainwater between mid-May to late-June (Chen *et al.*, 2004; Wang and LinHo, 2002), during which lowland areas are prone to flooding. This annual variation of water regime has great influence on rice growing and harvesting, which usually takes place in spring and summer.

In the Early Holocene, a quick sea level rise (reaching -5m relative to the present sea-level) is witnessed, resulting in an accelerated sedimentation rate in low relief areas such as the Yangtze River Delta (Stanley and Chen, 1996; Zong et al., 2011; Hori et al., 2002). This transformed the regional landscape from an “open, brackish water environment” to a “largely enclosed, wetland system” and/or freshwater marsh environments (Zong *et al.*, 2011). It then experienced continued sea-level rise (reaching

-2.5m at 7000 BP and then at an average of c.0.36 mm/yr from 7000 BP onwards) (Zong *et al.*, 2011) during the middle Holocene, roughly between c. 7000-4200 cal. BP. (Wang *et al.*, 2001), but more and more evidence also suggests that instead of experiencing steady sea-level rise, the mid-Holocene sea level highstand underwent a rather undulating trend. Decadal and interannual variability was taking place (Douglas *et al.*, 2000; Atahan *et al.*, 2008; Xin and Xie, 2006). However, this mid-Holocene sea-level highstand had fundamental consequences in local environments, mainly represented by the evolution of delta plains and coastal wetlands and by the resultant rising ground-water level and poor drainage (Stanley and Chen, 1996; Zong *et al.*, 2011). Sea-level continued to rise slowly in the late Holocene from c.-2.5m to about the present level by c.3000 cal. BP., during which time small estuaries and tidal flats evolved to freshwater marsh environments (Zong *et al.*, 2011). Two cooling events occurring in around c.5500 cal. BP and between c.4300-4000 cal BP are also reported (Zong *et al.*, 2011; Tao *et al.*, 2006; Wang *et al.*, 2005; Chen *et al.*, 2005), but details and mechanisms remain unclear.

The Hang-Jia-Hu Plain, where most Liangzhu Culture sites are located, is surrounded by the Tianmu Mountains to the west, the outliers of the Tianmu Mountains and the Dazheshan Mountains to the north, and the Daxiong and Daguan mountainous areas to the south. Within the plain, there are many small hills 20-50m high. Maoshan is one of them, extending east-westerly for about 200m, and 50m in altitude. The plain is crisscrossed by a developed water system, consisting of many rivers, ponds and swamps (Shi *et al.*, 2011). The geology of the mountains is dominated by different igneous and metamorphic rocks derived from active volcanic and tectonic (geological fracture) activities particularly during the Cretaceous (Wang *et al.*, 2006). According to geological surveys, the geology of Maoshan is, however, mainly composed of sedimentary rocks, including sandy mudstone, dolomite, limestone, silicalite, and so forth. The plain primarily consists of alluvial, fluvial and colluvial deposits accumulated since the Pleistocene (Institute of Engineering and Hydrological Geology, 1979). This is manifested by the multi-faceted Holocene sequences in this region, characterized by a typical transgressive relationship between sediments of different facies, such as eluvial, colluvial and alluvial deposits derived from terrestrial sedimentation processes and estuarine and lagoonal deposits derived from marine processes (Liu and Dong, 1990; Shi *et al.*, 2011).

3. Excavation at the Maoshan site

The Maoshan site (Figure 1a and 1b) is located about 20km to the east of the Liangzhu Culture walled site. Consecutive excavations have revealed well-structured paddy fields belonging to the Mid and Late Liangzhu Culture, sitting on an intermediate zone between the flat alluvial plain and the low hillslope of the Maoshan Hill (Figure 1b), and contemporary settlements located on the slope areas.

Before the construction of the Liangzhu paddy fields, three house foundations, four graves, some 160 pits and two wells belonging to the Majiabang period (c. 7000-6000 cal. BP) were built.

The excavated Liangzhu-period archaeological features include two house foundations, some 80 pits, and 161 graves, as well as other features such as wells, road tracks, and so forth. The Mid-Liangzhu field is divided by a natural creek in the middle, roughly

northwest-southeasterly oriented. The field was initially dug into alluvial materials and segregated into a few small squares which were connected to the creek by small ditched outlets (Figure 2a). 26 squares have been unearthed, of variable plans and ranging in size from 1-2m² to 30-40m². Between the squares are higher alluvial sediments, covered by thin layers of fine sandy and clayey materials and pottery shards. In the eastern end of the natural creek, a well-preserved canoe (7.35×0.45×0.23m) was found, made of rounded-shaped Chinese red pine (Figure 2b). Besides those in the sedentary area, two wells were also dug in the field, likely used in irrigation.

The field was then overlain by light-yellowish alluvial materials, upon which the Late Liangzhu paddy field was built (Figure 2c). This period witnessed fundamental changes in the construction and use of the field. An artificial creek was newly dug between the field and the sedentary area for the purpose of water management, along with many other small ditches located further south. Coring survey finds that this creek was parallel with the natural creek in use in previous period, but extending for a longer distance in the east-west direction. Between these ditches, narrow paths made of burnt earth were constructed across the field in a north-southerly direction, which divided the field into much larger squares compared to previously. They are normally 1000m² in size, but some can be up to 2000m². The size of the entire field is about 5.5 hectares (700×45-100m), according to the excavation and survey.

After abandonment, the Late Liangzhu paddy field was covered by a layer of organic-rich and humified peat-like sediment, containing Guangfulin period pottery (dated to the end Neolithic, c. 4100–3800 BP), on top of which a line of cow footprints is preserved. The sequence is finished with the deposition of a homogeneous layer of silty clay up to 1m thick, marking the end of rice cultivation.

4. Materials and methods

Soil samples were collected from on-site and off-site contexts (Figure 3), which cover paddy fields, fills of ditches and natural alluvial sequences. These alluvial sequences are located in places c.300 m, 500 m, and 2 km away from the archaeological site respectively (Figure 3b). In addition, modern cultivated soil samples were collected from paddy fields around the site for comparison. 42 particle size analyses were conducted at the Department of Geography of University of Cambridge using Malvern Mastersizer 2000 following the standard procedure described on <http://www.geog.cam.ac.uk/facilities/laboratories/techniques/psd.html>. 77 thin sections were made following the method described by Murphy (1986) and Courty *et al.* (1989) and were observed by petrological microscope (PPL and XPL) with the help of oblique incident light (OIL) and fluorescence microscope following the terminologies provided by Bullock *et al.* (1985) and Stoops (2003). 29 AMS ¹⁴C dates were obtained at the School of Archaeology and Museology of Peking University. These dates were calibrated by using the IntCal04 calibration curve and the OxCal v3.10 software. Most of the dates for the paddy field deposits fall into the time span of 4700-4200 cal. BP, that is, the middle to late Liangzhu culture period, but full AMS ¹⁴C reports will be published separately.

5. Results

Results of particle size distribution are shown in Figure 4. Results of the micromorphological examination of the Mid to Late Liangzhu paddy fields are summarized below. More detail is given in Table 1 and Supplementary Table. Together with excavation, micromorphology provides unambiguous evidence of rice farming, water management, and the expansion of rice agriculture through time.

5.1. Water management and hydrological changes through time

Water management for rice cultivation during the Mid-Liangzhu period at Maoshan was mainly reliant on the maintenance of the natural creeks across the field. A small amount of labour was invested in building ditch outlets to connect the field with the creeks for draining and watering (Figure 2a and Figure 3a). This had caused some change in soil pedogenetic processes, among which the Fe oxide coatings and hypocoatings are most abundantly present (Figure 5c). They are mostly formed along very large plant root channels, suggesting that oxidation was taking place here when the soil was saturated, leaving the voids an aerobic environment for oxidation (Lindbo *et al.*, 2010). Such features, however, also appear in natural/undisturbed soils as rhizomes of grassy plants often derived such features under natural wet-dry alternating conditions (Vepraskas, 2001). The more diagnostic features are those clay textural features, primarily including the so-called clay concentration features and/or dusty or silty clay features, which according to some recent research (Lee, 2011), are associated with textural changes of the groundmass due to irrigation or water management under cultivation. These features are indeed characterized by their great contents of coarse particles (silt-sized), diffuse boundaries with the soil groundmass and weak or no birefringence under XPL (Figure 7b). However, while the similarity in the textural features found in our study and those recognized by Lee (2011) from modern and ancient cultivated soils in South Korean does suggest that they would have resulted from water management or related activities, cautions should be applied when making such an interpretation as such textural features can be formed as long as there are suitable conditions, including broken down soil particles, physical mobility of particles due to quick water saturation and quick precipitation with poor sorting (Lindbo *et al.*, 2010).

In addition to these are the abundant crusts, which are less-commonly encountered in thin sections from the Late Liangzhu paddy field. These crusts are composed of dusty to silty clay, with clear tendency of sorting (Figure 7c). They are formed during short periods of surface drying (Pagliai and Stoops, 2010) in an otherwise prolonged waterlogged condition. The crusts are generally densely overlapped layer by layer, partly because the surface drying was taking place frequently, but might be also due to compaction after burial. It is also interesting to note that some of them have a serrated surface, probably resulting from bioturbation when the surface was dry.

The transition from the earlier rice field to the later one was accompanied with fundamental changes in water management. Firstly, a few more artificial ditches were newly dug; between these are the paddy squares much larger in size (see above and Figure 2c). Secondly and more importantly, redoxmorphic features, especially the typical concentric features formed by repeated Fe depletion and re-precipitation are especially abundant (Figure 5d, 5e, 6g and 6h), indicative of much longer periods of water saturation (Richards and Vepraskas, 2001; Lindbo *et al.*, 2010). These were nonetheless frequently punctuated by short-term drying periods due to deliberate draining for rice farming. Associated with these are the Fe-depleted areas in the groundmass. The more commonly present dusty or silty clay textural features, including

both clay concentration features and coatings (Figure 5b), further suggest frequent wet-dry alternations resulting in chemical reactions and physical movements of particles within the soils, implying a much more controlled water regime under management.

Dramatic hydrological change was recorded towards the end of the Late Liangzhu paddy field. In the upper part of the Late-Liangzhu cultivated soil immediately underlying the peat-like sediments (Figure 6a), horizontally distributed thin lenses of organic matters are interbedded with a silty to clayey soil groundmass (Figure 6e). These organic lenses probably formed during a controlled flooding season or irrigation. Their poor preservation suggests episodic wet-dry events which encouraged organic decomposition. Further up in the profile (Figure 3a and 3c), in the transitional zone to the peat layer, organic-rich sediment is replaced by poorly-sorted orange silty clay which might be a sign of periodic flooding (Figure 5h). The presence of slightly laminated clay lenses within this horizon also indicates low water velocity. Then there was the onset of peat accumulation alternating with silty clay fraction and very few micritic quartz and other minerals (Figure 5f and 5h). This suggests on the one hand that flooding events were continuing, but for most of the year, the groundwater was already high enough to facilitate the encroachment of wetland reed fen onto the already abandoned paddy field. This quickly gave way to a sedimentation regime dominated by peat growth. However, the accumulating organic matter was often disturbed and broken up as a result of seasonal surface degradation. This suggests seasonal drying and disturbance. Between the transitional zone of peat growth and the overlying clayey flood sediment, there was a return to interspersed horizons of peaty and silty mud fractions. This episodic peat development occurred under fluctuating water-table conditions.

Albeit provides insightful information concerning water management and rice farming, the above reflects a more localized picture of the relationship between rice farming and environmental change. This should be supplemented by the examination on samples collected from wider environmental contexts. The off-site peat sediment (Figure 3b) is more homogeneous than its counterpart in the paddy fields, implying less disturbance during peat growing (Figure 5i and 6c) and probably a more stable groundwater regime. Immediately on top of the alluvial materials which are the parent materials of the cultivated soils in the paddy fields, the sequence is dominated by alternating peat and micritic minerals. The organic matter is more homogeneous, mostly with horizontal distribution except for occasional bioturbation that generates some bow-like microstructures. Of particular interest are the distinct vesicle voids found here (Figure 5i and 7d), suggesting fast aeration after saturation.

Both the paddy field and its surroundings were covered by clayey flooding deposits up to 1m in depth. It should also noted that we are not able to know how the local environmental change observed here is related to the regional alluvial activities induced by sea-level and climatic (monsoonal) changes, which is a topic subject to systematic surveys in the future.

5.2. Development of farming practices

Systematic studies have revealed a clear developmental discourse of different type of stone agricultural tools throughout the Liangzhu period. The Liangzhu agricultural tools include *potuqi* (tools for breaking up soils), *yuntianqi* (tools for cutting the whole rice plants as shown by experimental studies), and sickles (ongoing research by L. Qin

and S. Nakamura). The former two are likely bound to wooden instruments. The excavation and geoarchaeology at Maoshan provide direct evidence for their use in rice farming. Between the two periods of paddy fields and the deposits underlying them, tool marks creating clear-cut boundaries are often found (Figure 7a). The boundaries between the Late Liangzhu field and the underlying alluvial deposits are particularly sharp, implying a more intensive ploughing strategy. Moreover, the groundmass of the Late Liangzhu cultivated soils is full of disrupted soil aggregates consisting of heterogeneous materials (Figure 7a). These are probably products of severe churning and mixing of the soils during plowing.

Whilst there is already clue of manuring in the Early Neolithic rice farming in this area (Zong et al., 2007), our micromorphological examination offers straightforward evidence of deliberate addition of dung fragments, night soil, etc. to the cultivated soils as soil amendment (Figure 6d, 6f and 6k). These are, again, significantly more abundant in the Late Liangzhu cultivated soils than in the earlier ones (also see the Supplementary Table). The addition of soil amendment is also suggested by the results of particle size distribution. As can be seen in Figure 4, bulk samples from the Late Liangzhu field have a noticeable contribution from sandy particles, while their counterparts in off-site contexts contain very few or no particles larger than medium or coarse silt size. With the construction of the artificial ditch in the north of the field which essentially stopped the deposition of eroded material from the nearby hill (Figure 2c and 3d), the presence of those coarse material can be best explained as deliberate addition to the soils.

These heterogeneous aggregates were probably burned before being added to the soils, as most of them have a dense, darkish-brownish or reddish colour under both XPL and PPL (Figure 6f and 6k). In spite of this, phytoliths, commonly present in dung fragments due to animals' consumption and digestion of plants, are preserved in many aggregates.

Two harvesting methods may have been employed. The first one is involved with the use of aforementioned stone sickles. Rice plants were cut from the stem, or in some instances, only panicles were cut by sickles, leaving straw in the field (cf. Weisskopf 2009, 372-374). The second one is revealed by micromorphological examination. The occasional presence of small hole-shaped microstructures in thin sections from the Mid Liangzhu paddy field were probably caused by uprooting whole rice plants while harvesting (cf. Fuller et al., 2007). Although the information currently available at Maoshan is not sufficient to support the argument that the application of sickle harvesting in rice farming may have significantly accelerated domestication process of rice (cf. Fuller et al., 2009), future research might reveal that the development of harvesting techniques throughout the Liangzhu period may have indeed played a very important role in the evolution of rice farming in this area.

It appears that firing was widely applied in managing field ecology. Apart from the randomly distributed charcoal within the groundmass, charcoal derived from in situ burning is often found inside large root channels in both Mid and Late Liangzhu paddy fields (Figure 5c). This suggests in-field ecological interference perhaps during the growing and after the harvesting seasons. Firing not only creates ideal material, ash, for improving soil nutrient, but it might also help in reducing the growth of weedy plants.

6. Discussion

6.1. Population growth, water management and intensifying rice cultivation

The development of the Liangzhu culture was coincident with population expansion. The construction of the large walled site at Liangzhu and the associated facilities (e.g. artificial platforms used for elite burials and as an observatory) is an indication of highly stratified society and may have been both the trigger and consequence of population expansion (Liu, 2007). Especially engrossing is the construction of a huge dam in front of a canyon to the north of the walled site in the Middle Liangzhu period. This may have served as an important barrier to prevent the site from being inundated by serious floods during the monsoonal rainfall season. The walled site was surrounded by both artificial and natural water. The completion of these labour-consuming edifices and the political system that supported them could not have achieved and survived without a surplus of rice. The Late Liangzhu period (c.4500-4000 BP) witnessed a large population moving from highland to lowland areas (Wang, 2007), and the number of small-size sites reached a peak at this time, both as a direct result of population migration and re-organization for rice cultivation in the region. This intensification in the later period is corroborated by micromorphology at the Maoshan site very well. For instance, it is evidenced by the presence of those redoximorphic features resulting from frequent groundwater changes (cf. Lindbo *et al.*, 2010) as described in section 5.1. It is thus important to note that such an intensification in rice farming was probably achieved along with the success of water management. Archaeological discoveries in this region show that the later period of rice farming witnessed the increasing abundance and technological improvement of agricultural tools such as ploughing tools made of very large pieces of flat, grounded stone, as already mentioned above (ongoing research by L. Qin and S. Nakamura; Yu, 2007). But this technological transition is not very evidently seen at Maoshan. Whether this difference within the late Liangzhu culture suggests regional disparity of economic and political functions amongst these contemporary sites requires more thorough survey. But it appears to suggest that water management and associated administrative control of water resources and uses played a more central role in the later-period rice farming.

Some burials located in the toeslope of the Maoshan Hill are also revealed during the excavation, with very few burial goods. These are in marked contrast with those found at Yujiashan, a cemetery site located just c.1km away, where most burials are buried with beautiful jade objects (Zhao, 2012). Sedentary features are rare at Maoshan. This settlement structure suggests that the rice farming at Maoshan was probably practiced by farmers who had connections with other groups of people and/or with the Liangzhu walled site. This might also indicate a close relationship between the cultural centre and small sites towards the management, control, and redistribution of water by the time, a type of relationship often observed in other ancient civilizations and historic periods (Higham, 1996; Higham, 2001; Higham, 2004), although direct evidence of this relies on systematic investigation on regional palaeo-hydrology.

6.2. Managing the local landscape

As stated above, there is also growing evidence showing that hunting and gathering had been an important part of prehistoric economic subsistence in the Lower Yangtze River (cf. Fuller *et al.*, 2007; Qin *et al.*, 2010). For instance, the consumption of acorns may have been a large proportion in palaeo-diets at some site (Center of Chinese Archaeology, 2011; Qin *et al.*, 2010). The exploitation of these wild resources would

have involved with the management of local landscapes. Micromorphological examination of the off-sites samples enables a deeper scrutiny of the interaction between human activities and regional landscape changes in the Liangzhu period.

It shows that by the Liangzhu period, not only did it undergo intensified rice farming, but the management of rich natural niches for the procurement of wild rice and other resources may have been crucial for the Liangzhu communities. Evidence for this long-neglected argument can be sought on the following aspects. Firstly, as mentioned above, wetlands and marshes rich in wild rice were widely present in the Middle to Early-Late Holocene (Zong et al., 2011; Wang et al., 2001; Fuller et al., 2010). Owing to favourable temperature, humidity and environmental conditions, the Lower Yangtze River has been one of the central place for wild rice distribution since at least the Early Holocene, as revealed by some recent surveys (Fuller et al., 2010; Atahan et al., 2008). Micro-fossil plant remains derived from systematic survey show that *Oryza sativa* phytoliths are abundantly deposited not only in the paddy field but also in contemporary levels of its vicinities at Maoshan (ongoing research by Y. Zheng), for instance, indicating large-scale wild rice growth in the Liangzhu period.

Secondly, the management of marginal environments may have been important to the Liangzhu farmers too. The Manshan site, as mentioned above, is actually located in one of these places (Figure 1a). Situated between the toeslope of the Maoshan Hill and the adjacent floodplain, the paddy field was connected to both natural and artificial ditches and creeks. Compared to fields constructed on flat floodplains, the water system here, consisting of slopes with gentle gradients and developed ditches and creeks, was more optimal for water management, which is influenced by monsoonal climate and the resultant seasonal groundwater fluctuations. In addition, such intermediate zones would have also supported large biomass and biodiversity, essential for the continued hunting-gathering activities. One of the off-site sequences, where evidence of possible wild-rice gathering is found as supported by the micromorphological examination which confirms the presence of abundant charcoal probably derived from in-field burning (Figure 7e), is located in a similar environment but with a much larger mountain which would potentially have had richer biomass and diversity (Figure 7f). This indicates that the management of wild field was taking place and the view of managing marginal environments might have a wider implication.

Lastly, landscape management would have resulted in ecological consequences. Palynological studies demonstrate a marked increase of secondary forest and herbaceous species associated with human intervention in pollen assemblages in the Lower Yangtze River and the Yangtze River Delta during the Liangzhu period (5,200-4,200 cal. BP), most likely due to increased land clearance and deforestation (Li et al., 2010a; Xu et al., 2010; Yi et al., 2003; Atahan et al., 2008). At some local sites, for instance, Guangfulin in the Yangtze Delta, there is noticeable increase in both micro- and macro-charcoal from 4,700 cal. BP, which is attributable to increased human activities (Atahan *et al.*, 2008). Evidence of soil erosion in this area (Atahan *et al.*, 2008), however, is not so apparent compared to other areas in the same period (e.g., the Middle Yangtze River, see Li et al., 2010a). This, according to the authors, could be related to either relatively more favourable environmental conditions in the Lower Yangtze River or the lag-feedback effect in local ecosystems (Li et al., 2010a; Atahan et al., 2008).

There are also speculations that local processes (e.g. tectonic movements and changing sedimentary processes) may have been partly responsible for the relative sea-level change in the Lower Yangtze River (Zong, 2004). Although direct connection is still missing, effects of long-term water management and rice farming, deforestation and consequent sedimentation change should be taken into account when assessing relative sea-level changes and their effect on local ecologies (cf. Fuller and Ling, 2009; Li *et al.*, 2010b).

7. Conclusions

The excavation and geoarchaeological study at Maoshan as presented above show that it was the successful management of cultivated landscape that supported the development of the Liangzhu culture. It includes water management, land clearance and construction of paddy fields especially in the marginal areas.

The development of rice farming experienced fundamental change from the Mid to Late Liangzhu periods. During the Late Liangzhu period, the size of the divided squares in the field at Maoshan became much larger than previously. Coupled with the newly dug artificial ditches, they indicate more labour investment in agriculture. As well as technological development in the production of agricultural tools, the evolution of rice farming during the Late Liangzhu period was particularly facilitated by the more intensive ploughing, wider application of manuring and possibly new way of harvesting (more common use of sickle harvesting). A mature political organization of the Liangzhu society must have been behind these fundamental changes. This thus merits more scholarly attention.

In our study region, in parallel with the development of rice farming, the Liangzhu period also saw continuing management of local landscape for multiple purposes, including land clearance for both agriculture and domestic activities, gathering wild foods (e.g., wild rice and aquatic nuts), water management, and so on. The success of the Liangzhu society was partly to do with their increased ability in managing and sometimes even manipulating their local landscape. Our examination of samples collected from off-site contexts near the Maoshan paddy field provides important clues as to the management of local landscape during the Liangzhu period, but further research is required.

This rice farming appeared to work for a long time. There is, however, a long-lasting argument that the decline or collapse of the Liangzhu culture, manifested by the abandonment of the Liangzhu walled site, was coincident with dramatic regional or global climatic events in the Late Holocene. Among them the so-called 4.2 or 4.0 ka BP event and its ensuing ecological consequences are often mentioned (Zhou and Zheng, 2000; Li *et al.*, 2010a). While the formation of the peat-like deposits overlying the Late Liangzhu paddy field is certainly related to hydrological changes which, in a broad sense, might be indeed related to sea-level changes in this area, it is so far difficult to make any direct link between the climatic event(s) and development of rice farming. A few questions should be addressed before the establishment of such links. For example, chronological discrepancy between palaeo-ecological records and archaeological records seems to be a common problem and it calls for more systematic investigations; the ecological impacts of such climatic events should be fully

understood before they are imposed onto archaeological consideration on cultural adaptations.

Another important issue that needs to be addressed in the future is that our sample size is still relatively small and it is obviously not sufficient to illustrate the potential diversity and complexity of the rice farming practices within the Liangzhu culture (in terms of construction of rice paddy fields, farming regimes, water management, etc.). We should try to scrutinize whether the patterns seen in our study is typical in the Liangzhu culture in the future.

Nonetheless, geoarchaeological research on a small paddy field, like the one at Maoshan, of the Liangzhu culture proves to be a promising field for improving our better understanding of the mystery of the ebb and flow of the culture in the Lower Yangtze River.

Acknowledgement: The authors wish to thank Dr. L Qin for providing information about her research on the evolution of agricultural tools in the Liangzhu culture and helpful discussion. We would also like to thank the reviewers' constructive comments and suggestions.

- Atahan P, Itzstein-Davey F, Taylor D, et al. (2008) Holocene-aged sedimentary records of environmental changes and early agriculture in the lower Yangtze, China. *Quaternary Science Reviews* 27: 556-570.
- Bullock P, Fedoroff N, Jongerius A, et al. (1985) *Handbook for Soil Thin Section Description*, Wolverhampton: Waine Research Publications.
- Center of Chinese Archaeology, Peking University. (2011) *Integrated Studies on the Natural Remains from Tianluoshan (in Chinese)*. Beijing: Cultural Relics Press.
- Chen TC, Wang SY, Huang WR, et al. (2004) Variation of the East Asian summer monsoon rainfall. *Journal of Climate* 17: 744-762.
- Chen Z, Wang Z, Schneiderman J, et al. (2005) Holocene climate fluctuations in the Yangtze delta of eastern China and the Neolithic response. *The Holocene* 15: 915-924.
- Courty MA, Goldberg P and Macphail R. (1989) *Soils and Micromorphology in Archaeology*. Cambridge: Cambridge University Press.
- Douglas BC, Kearney MS and Leatherman SP. (2000) *Sea level rise: history and consequences, Volume 1*. San Diego: Academic Press.
- Forsyth A. (1995) Neolithic Chinese jades. In: Keverne R (ed) *Jade*. London: Lorenz Books, 48-87.
- Fuller D, Sato YI, Castillo C, et al. (2010) Consilience of genetics and archaeobotany in the entangled history of rice. *Archaeological and Anthropological Sciences* 2: 115-131.
- Fuller DQ, Harvey E and Qin L. (2007) Presumed domestication? Evidence for wild rice cultivation and domestication in the fifth millennium BC of the Lower Yangtze region. *Antiquity* 81: 316-331.

- Fuller DQ and Ling Q. (2009) Water management and labour in the origins and dispersal of Asian rice. *World Archaeology* 41: 88-111.
- Fuller DQ, Qin L, Zheng YF, et al. (2009) The domestication process and domestication rate in rice: spikelet bases from the Lower Yangtze. *Science* 323: 1607-1610.
- Higham C. (1996) *The Bronze Age of Southeast Asia*. Cambridge: Cambridge University Press.
- Higham C. (2001) *The Civilization of Angkor*. Berkeley and Los Angeles: California University Press.
- Higham C. (2004) Before Devanika: social change and state formation in the Mekong Valley. In: Cherry J, Scarr C and Shennan S (eds) *Explaining Social Change. Studies in Honour of Colin Renfrew*. Cambridge: McDonald Institute for Archaeology, 203-214.
- Hori K, Saito Y, Zhao Q, et al. (2002) Architecture and evolution of the tide-dominated Changjiang (Yangtze) River delta, China. *Sedimentary Geology* 146: 249-264.
- Institute of Engineering and Hydrological Geology, Seismological Bureau of China. (1979). *Atlas of Hydrology and Geology of People's Republic of China* (in Chinese). Beijing: Map Publishing House.
- Lee HJ. (2011) *The Agricultural Land Use Dynamics Associated with the Advent of Paddy Rice Cultivation in Bronze Age South Korea*. Unpublished PhD dissertation. Cambridge: University of Cambridge.
- Li Y, Wu J, Hou S, et al. (2010a) Palaeoecological records of environmental change and cultural development from the Liangzhu and Qujialing archaeological sites in the middle and lower reaches of the Yangtze River. *Quaternary International* 227: 29-37.
- Li YY, Wu J, Hou SF, et al. (2010b) Palaeoecological records of environmental change and cultural development from the Liangzhu and Qujialing archaeological sites in the middle and lower reaches of the Yangtze River. *Quaternary International* 227: 29-37.
- Lindbo D, Stolt MH and Vepraskas MJ. (2010) Redoximorphic features. In: Stoops G, Marcelino V and Mees F (eds) *Interpretation of Micromorphological Features of Soils and Regoliths*. Amsterdam: Elsevier, 129-147.
- Liu B. (2007) *The World of God and Witches: An Overview of the Liangzhu Culture (in Chinese)*. Hangzhou: Zhejiang Photographing Press.
- Liu CZ and Dong YF. (1990) Sedimentary textures and environments of the Hangzhou Bay (in Chinese with English abstract). *Marine Geology and Quaternary Geology* 10: 53-65.
- Liu L and Chen XC. (2012) *The Archaeology of China: From the Late Paleolithic to the Early Bronze Age*. Cambridge: Cambridge University Press.
- Liu L, Lee GA, Jiang LP, et al. (2007) Evidence for the early beginning (c. 9000 cal. BP) of rice domestication in China: a response. *Holocene* 17: 1059-1068.
- Murphy CP. (1986) *Thin Section Preparation of Soils and Sediments*, Berkhamsted: A B Academic Publ.
- Pagliai M and Stoops G. (2010) Physical and biological surface crusts and seals. In: Stoops G, Marcelino V and Mees F (eds) *Interpretation of Micromorphological Features of Soils and Regoliths*. Amsterdam: Elsevier, 419-440.

- Qin L. (2013) The Liangzhu Culture. In: Underhill AP (ed) *A Companion to Chinese Archaeology*. Malden, USA: Wiley-Blackwell, 574-596.
- Qin L, Fuller DQ and Zhang H. (2010) Modelling wild food resource catchments amongst early farmers: case studies from the lower Yangtze and Central China (in Chinese with English abstract). *Quaternary Sciences* 30: 245-261.
- Rawson J. (1995) *Chinese Jade from the Neolithic to the Qing*. London: British Museum.
- Richards JL and Vepraskas MJ. (2001) *Wetland Soils: Genesis, Hydrology, Landscapes, and Classification*. Boca Raton: Lewis Publishers.
- Shi CX, Mo DW, Li CH, et al. (2011) The relationship between environmental evolution and human activities in Liangzhu site group, Zhejiang Province, China (in Chinese with English abstract). *Earth Science Frontiers* 18: 347-356.
- Stanley DJ and Chen Z. (1996) Neolithic settlement distributions as a function of sea level-controlled topography in the Yangtze delta, China. *Geology* 24: 1083-1086.
- Stoops G. (2003) *Guidelines for Analysis and Description of Soil and Regolith Thin Sections*. Wisconsin: Soil Science Society of America, Inc.
- Tao J, Chen M-T and Xu S. (2006) A Holocene environmental record from the southern Yangtze River delta, eastern China. *Palaeogeography, Palaeoclimatology, Palaeoecology* 230: 204-229.
- Vepraskas MJ. (2001) Morphological features of seasonally reduced soils. In: Richards JL and Vepraskas MJ (eds) *Wetland Soils: Genesis, Hydrology, Landscapes, and Classification*. Boca Raton: Lewis Publishers, 85-106.
- Wang B and LinHo. (2002) Rainy season of the Asian-Pacific summer monsoon. *Journal of Climate* 15: 386-398.
- Wang J, Chen X, Zhu X-h, et al. (2001) Taihu Lake, lower Yangtze drainage basin: evolution, sedimentation rate and the sea level. *Geomorphology* 41: 183-193.
- Wang JH, Zhou Y, Zhen Z, et al. (2006) The Research on the late-Quaternary Sedimentary Record and Environmental Evolution in Hangzhou Bay (in Chinese). *Journal of Palaeogeography*: 551-558.
- Wang MD. (1998a) Studies on Liangzhu jades (in Chinese). In: Tang C (ed) *East Asian Jade: Symbol of Excellence*. Hong Kong: Centre for Chinese Archaeology and Art, The Chinese University of Hong Kong, 265-270.
- Wang NY. (2007) *A Remote Village: Study on the Liangzhu Settlement and Occupation Patterns*. Hanzhou: Zhejiang Photographing Press.
- Wang Y, Cheng H, Edwards RL, et al. (2005) The Holocene Asian monsoon: links to solar changes and North Atlantic climate. *Science* 308: 854-857.
- Wang ZG. (1998b) A comprehensive discussion on Liangzhu jades (in Chinese). In: Tang C (ed) *East Asian Jade: Symbol of Excellence*. Hong Kong: Centre for Chinese Archaeology and Art, The Chinese University of Hong Kong, 251-264.
- Weisskopf AR. (2009) *Vegetation, Agriculture and Social Change in Late Neolithic China: A Phytolith Study*. Unpublished PhD dissertation. London: University College London.
- Xin Z and Xie Z. (2006) Construction of the simulating model for geomorphic evolution on the Yangtze delta, China (in Chinese with English abstract). *Acta Geographica Sinica* 61: 549-560.

- Xu D, Lu H, Wu N, et al. (2010) 30 000-Year vegetation and climate change around the East China Sea shelf inferred from a high-resolution pollen record. *Quaternary International* 227: 53-60.
- Yi S, Saito Y, Zhao Q, et al. (2003) Vegetation and climate changes in the Changjiang (Yangtze River) Delta, China, during the past 13,000 years inferred from pollen records. *Quaternary Science Reviews* 22: 1501-1519.
- Yu WJ. (2007) *The Food and Cloth Culture of the Liangzhu People: Eating Rice and Clothing Nettle (in Chinese)*. Hangzhou: Zhejiang Photographing Press.
- Zhao Y. (2012) Investigations on the archaeological ensemble of heritage sites at Linping, Yuhang, Zhejiang (in Chinese with English abstract). *Dongnan Culture*: 31-39.
- ZPICRA, Zhejiang Provincial Institute of Cultural Relics and Archaeology. (1999) *The Studies of the Liangzhu Culture*, Beijing: Science Press.
- Zheng YF, Sun GP, Qin L, et al. (2009) Rice fields and modes of rice cultivation between 5000 and 2500 BC in east China. *Journal of Archaeological Science* 36: 2609-2616.
- Zhou H and Zheng XM. (2000) The Impact of Environmental Changes on the Development of Prehistoric Civilization: the Decline of the Ancient Liangzhu Culture in the Southern Plain of Yangtze River Delta (in Chinese). *Journal of East China Normal University (Natural Science)*: 71-77.
- Zong Y, Chen Z, Innes JB, et al. (2007) Fire and flood management of coastal swamp enabled first rice paddy cultivation in east China. *Nature* 449: 459-U454.
- Zong Y, Wang Z, Innes JB, et al. (2011) Holocene environmental change and Neolithic rice agriculture in the lower Yangtze region of China: a review. *The Holocene*: 1-13.
- Zong YQ. (2004) Mid-holocene sea-level highstand along the southeast coast of China. *Quaternary International* 117: 55-67.

Unit	Context	Microstructure	Coarse fractions	Organic matter	Anthropogenic and related inclusions	Ground mass	Pedofeatures
MSP2 :1-1	Horizon 5	Weakly developed platy	Well-sorted fsz quartz and micas	Horizontally distributed vf OP			FN + Calcitic nodules *
MSP2 :1-2	Horizon 6	Platy	Lenses of silt and clay	Fine OM at the base; more OP upwards			
MSP2 :1-4	Horizon 6b	Weakly developed channel and vughy	Rounded msz cherts **;	vf OM along voids +; OP +	Dung fragments?	Disrupted clay aggregates; clay lenses	

			angular fsz minerals **; angular vfsz +				
MSP2 :1-5	Horizon 7	Apedal	Vcsz to fsz chert **, vfsz quartz and other minerals **	Vf OP **, fsz and msz OM			
MSP2 :2-1	Horizon 7	Apedal; very few channels	Msz to csz chert **, fsz minerals **	Variable sizes OM **, vf OP **		Sharp boundaries consisting of iron-depleted bands of silt and very fine sand	Iron-depleted areas; dusty or silty clay infillings
MSP2 :2-2	Horizon 8	Moderately developed crack	Angular fsz to msz chert and quartz **, csz quartz , *	Msz to csz charcoal **, vfsz charcoal and OM **, vf OP **		Iron-depleted areas between Fe oxide features	Fe oxide CC and HC +; clay concentric features **, FN **, bow-like features *
MSP2 :3	Horizon 8	Developed crack; very large channels	Msz to csz chert and quartz *	Msz charcoal and OM **, vf OM **		Iron depleted area	Fe oxide CC and HC +; clay bands, **, clay concentric features **, Mn nodules **, FN, **, crust **

MSP2 :4	Horizon 9	Crack and angular blocky; large channels	Msz to csz chert and quartz *	Msz to csz OM and charcoal **; vf OM and charcoal **		Weakly or complet ely iron deplete d areas	CCF**; Mn nodules **; Mn hypocoat ings **; Fe oxide CC and HC **; FN **; clay concentri c features *; crust *
MSP4 :4-1	Horizon 5	Apedal	Same as MSP1: 1-1	Same as MSP1:1-1			
MSP4 :1-2	Horizon 6	Apedal; weakly develope d vughy	Sub- angul ar msz to csz chert, quartz and feldsp ar **	Horizonta lly or discontin uously deposited OM +; vf OM **		Very large sized, rounded HA	FN **
MSP4 :1-3	Horizon 7	Weakly develope d crack; large chambers	Msz chert and quartz **; fsz quartz *	Fine to vf OM +; msz OM **		Iron- deplete d areas	Fe oxide QC and CC +; FN **
MSP4 :2	Horizon 7-8	Weakly develope d crack; abundant channels	Sub- angul ar msz to csz chert, quartz and micas	Coarse to vfsz charcoal and OM, **; vf OP **		Iron- deplete d areas near voids and channel s	Fe oxide HC and QC *; FN *; ccf *; clay intercalat ions *; crust *; gypsum, *
MSP4 :3	Horizon 8-9	Weakly develope d crack with channels	Msz to csz chert and quartz	Very coarse charcoal *; fsz to msz charcoal and OM **; vf charcoal		Iron- deplete d areas; HA with sharp boundar ies	Fe oxide QC and HC **; clay intercalat ions *; FN *; calcitic nodules *; CCF **;

				and OM **			Mn stainings *
MSP4 :4	Uncultivated soil	Weakly developed channel	Vfsz minerals *	Almost absence of OM and charcoal > vfsz; vf OM and charcoal **		Variable size HA; iron- depleted areas	CCF **; Fe oxide HC and QC **; FN **, crust *
MSP4 :5-5	Uncultivated soil	Weakly developed channel	Same as MSP4: 4	Same as MSP4:4		Roughly same as MSP4:4	Fe oxide HC and QC, +; FN +; Mn nodules **; clay concentric features, *
MSP4 :5-4	Horizon 7	Weakly developed crack and channel	Msz to csz chert and quartz **	Very coarse charcoal *; fsz to msz charcoal and OM **, vf OM and charcoal **		Iron depleted areas **, HA **	Fe oxide QC and HC, **; clay intercalations *; FN *; CCF *; Mn stainings **
MSP4 :5-3	Horizon 8	Weakly developed crack and channel	Roughly the same as MSP4: 5-4	Less charcoal than MSP4:5-4		Iron- depleted areas; highly disturbed ground mass consisting of abundant HA	Mn pedofeatures, *; Fe oxide QC and HC *; thin dusty CC, *; CCF, **
MSP4 :5-2	Horizon 7	Apedal with cracks and channels	Msz to csz chert and quartz **	Vfsz to msz OM and charcoal +; vf OP +		Highly disturbed ground mass consisting of abundant	Fe oxide QC **; FN *

						nt aggrega tes	
MSP4 :5-1	Horizon 7	Apedal	Fsz to msz chert and quartz **	Fsz to csz OM and charcoal +; vf OP **	Bone fragment s *	Upper part has mixed material s	Mn nodules *; FN *; Fe oxide QC *
MSP5 :2-1	Horizon 7	Apedal with some channels	Fsz to csz miner als *	Fsz to msz OM and charcoal **, vf OP **		Highly disturbe d ground mass consisti ng of abunda nt HA	CCF **; FN **; Fe oxide QC *; clay concentri c features *
MSP5 :2-2	Horizon 7	Apedal with some channels	Msz to csz miner als, *	Fsz to msz OM *, vf OP **		Relative ly less disturbe d ground mass	Fe oxide QC *; clay concentri c features, *; FN *; bioturbat ed features
MSP5 :3	Horizon 7-8	Apedal with some channels	Msz miner als *	Msz to csz OM *; vf OP **		Abunda nt HA	Fe oxide QC and HC **; clay concentri c features, *; Mn nodules **, CCF *
MSP7 :1-1	Horizon 6	Apedal with some channels	Fine to msz **	Variable size OM ++			Siltly coatings, *; bow- like features *
MSP7 :1-4	Horizon 7	Apedal with some channels	Msz to csz miner als **	Csz OM +; vf OM **		Iron- deplete d areas; few HA	Fe oxide QC *; FN **; excremen tal aggregate s *
MSP7 :2	Horizon 7-8	Apedal with channels	Msz to csz chert and	Fine to csz OM and charcoal		Abunda nt HA	Fe oxide HC and QC **; FN **, CCF

			other minerals **	++; vf OM **			**; clay concentric features *
MSP7 :3	Horizon 8	Apedal with abundant channels	Msz to vcsz chert and other minerals, **	Fine to csz charcoal and OM *; vf OM **		Msz to csz HA *	Fe oxide QC and dusty CC **; clay concentric features *; clay intercalations *; CCF *
MSP7 :4	Horizon 9	Moderately developed channel and crack	Msz to vcsz minerals *	Msz to csz OM **; vf OM **		Abundant HA	Dusty clay CC and HC, layered, *; clay intercalations *; CCF *; crust +; Fe oxide HC and QC **; FN **
MSP1 0:1-1	Horizon 7	Apedal with some channels	Msz to vcsz chert and other minerals **	Fine to csz OM and charcoal +; vf OM **	Dung fragments *	Abundant HA	FN **
MSP1 0:1-2	Horizon 7	Apedal with cracks and channels	Msz to vcsz minerals, mainly chert **	Fine to csz OM and charcoal **; vf OM **	Dung fragments *	Highly mixed ground mass consisting of abundant HA	Fe oxide QC **; dusty clay HC *; FN *; CCF *; bioturbated features
MSP1 0:1-3	Horizon 8	Apedal with few channels	Fine to msz minerals, mainly quartz *	Fine to csz OM *; vf OM **		Iron depleted areas; organic-rich lens	Fe oxide QC **; dusty clay HC *; FN **; CCF *

MSP1 0:2	Horizon 8-9	Moderately developed crack with channels	MsZ to vcsz minerals *	Csz OM and charcoal **; vcsz charcoal *		Iron depleted areas	CCF **; Fe oxide QC **; dusty clay HC *, layered; FN *
MSP1 0:3	Horizon 9	Apedal; crack	Csz to vcsz minerals **	Csz to vcsz OM and charcoal, +; vf OM *		A few HA	Fe oxide HC and QC **; silty HC *; dusty clay HC *; FN **; CCF *
MSP1 :1	Horizon 5 off- site	Apedal	Absence of minerals > vfs	Very few OM		Alternating laminations of clay laminae and vf to silt- sized minerals	Mn HC and nodules **; FN +; limpid CC and dusty HC *; broken clay aggregates *; bow- like features *
MSP1 :2-1	Horizon 5 off- site	Same as MSP1:1					
MSP1 :2-2	Horizon 6 off- site	Platy and weakly developed channel	Fsz to msz minerals *	Variable size OM +		Clay rich aggregates mixed with OM	Clay intercalations *; CC *
MSP1 :2-3	Horizon 7 off- site	Apedal	Fsz to msz minerals *	Variable size OM and charcoal **			Limpid CC and HC, layered, *; dusty clay HC, *; Fe oxide HC and QC, **, FN **
MSP1 :3	Horizon 7 off- site	Moderately developed crack with large channels	Almost absence of minerals	Fsz to msz OM, *		Iron- depleted areas with variable boundaries	Fe oxide HC and QC, +; FN +; Fe oxide masses,

			als > vfsz			ies with the ground mass	**; Mn nodules **
Park 3	Horizon 7 off-site	Moderately developed crack	Msz quartz *	OM horizontally deposited in large aggregates; fsz to msz OM and charcoal **		Iron-depleted areas	Fe oxide HC and QC, ++; dusty CC and infillings, **; Mn nodules *
Park 4	Horizon 7 off-site	Moderately developed crack	Msz quartz *	Msz to csz OM, **; vf OM, **		Iron-depleted areas	Disrupted clay aggregates, *, Fe oxide HC, QC and masses +; Mn nodules +
MS-S1	Horizon 8	Massive with some channels	Msz to csz minerals, mainly chert, **	Csz charcoal *, variable size OM +	Bone fragments *, dung fragments *		Disrupted crust *, Fe oxide HC and staining, **
MS-S2	Horizon 8 and ditch No.7	Massive with channels	Msz to vcsz chert **, msz other minerals *	Variable size OM +; vcsz charcoal *		Disrupted clay rich HA, **	Fe oxide HC and QC, **
MS-S8	Horizon 8	Massive with abundant channels and vughs	Msz to csz chert, *, fsz to msz quartz *, gypsum, present	Vfsz OM **, variable size OM and charcoal **		Disrupted clay rich HA, *	Clay or silty CCF, **, Fe oxide CC and HC **
MS-S9	Horizon 8-9	Massive with large		Vfsz OM **, fsz to		Scattered iron-	Fe oxide HC and

		cracks and channels		msz OM and charcoal, **		depleted areas	CC, **; clay and silty clay bands, +
MS-S10	Horizon 9	Massive with some cracks and channels	Fsz to msz quartz, **; msz to csz chert *	Vf OM +; variable size OM and charcoal +	Highly mineralized bone fragments		Crust +; Fe oxide HC, **
MS-S11	Horizon 9	Massive with some vughs and channels	Fsz to msz quartz *; msz to csz chert +	Vfs OM, **; fsz to msz charcoal and OM, +	Bone fragments, *		Fe oxide CC and staining, **; dusty clay infillings, *
MS-S12	Horizon 9	Massive with some vughs and channels	Msz to csz chert, +; fsz to msz quartz, *	Variable size OM and charcoal ++; vf OM **	Bone fragments, *; dung fragments, *		Fe oxide HC, QC and masses, +
MS-S13	Horizon 9	Massive with cracks	Variable size chert, **	Variable size OM and charcoal, ++; vf OM, +		Disrupted clay rich aggregates, +, mainly derived from crusts	Crust, +
MS-S14	Horizon 9 and uncultivated soil below	Massive with very large cracks and channels	Msz to vcsz chert, **; fsz to msz quartz, *	Variable size OM and charcoal, **; vf OM, **	Bone fragments, *	Large-sized disrupted HA, **	Mn staining, **; Fe oxide HC, nodules and masses, +; clay intercalations, *
MS-S15	Horizon 7-8	Massive with channel and large cracks	Fsz to msz quartz and micas, *, large chunk	Fsz to msz OM, **; vf OP, **		Iron-depleted areas	Fe oxide HC, QC and masses, +

			s of chert, prese nt				
MS-S16	Horizon 8	Massive with crack and large channels	Msz quartz , *	Msz to csz OM, **, vf OP, **		Iron- deplete d areas	Fe oxide QC, HC and masses, +; Mn nodules, *; dusty CC, *; clay bands, +
MS-S23	Horizon 10 in field no. 20	Weakly develope d sub- angular blocky with plenty cracks, channels and vughs	Msz to csz chert, **, fsz to msz quartz , *	Variable size OM and charcoal, ++	Bone fragment s, *		Crust, **; Fe oxide HC, *
MS-S22	Horizon 10 in field no. 20	Massive with abundant cracks	Fsz to msz quartz , **; gypsu m with perfec t crysta lline prese nt	Fsz to msz OM and charcoal, **, vf OP, **			Fe oxide HC and CC, +; dusty clay intercalat ions, **; crust, *; Mn nodules, *
MS-S19 ¹	Horizon 10 in field no. 20 and the unculti vated soil below	Massive with few channels and cracks	Fsz to msz chert, **, fsz quartz , *;	Fsz OM and charcoal, *; vf OM, **		Clay rich HA, *; iron- deplete d areas	Crust, **; Fe oxide HC and CC, +; CCF, *
MS-S24	Horizon 10 in field no. 21	Massive with abundant cracks and some vughs and channels	Msz to csz chert, +; fsz to msz quartz and	Variable size OM and charcoal, +; vf OM, **	Bone fragment s, *	Disrupt ed clay rich HA, *	Crust, **; CCF, rare; Fe and Mn nodules, *

			feldspar, **				
MS-S20	Horizon 10 in field no. 21 and the uncultivated soil below	Massive with abundant cracks	Fsz quartz, *; msz chert, *	Fsz OM, *; vf OP, **		Abundant iron-depleted areas	Fe oxide CC, HC and QC, **; FN, *; Mn QC, nodules and linings, **; dusty or silty clay bands, **; crust, **
MS-S25	Horizon 8-10 in field no. 16	Massive with abundant voids and some cracks and vughs	Msz to csz chert, *; fsz quartz, *	Fsz to msz OM and charcoal, **; pebble-sized charcoal, *; vf OM, **	Dung fragments, present		Dusty CCF, *; dusty clay HC, *; Fe oxide HC, QC and masses, +
MS-S26	Horizon 10 in field no. 16 and the uncultivated soil below	Massive with some channels, vughs and cracks	Fsz quartz, *	Fsz OM, **; VF OP, +		Clay rich disrupted HA, *	Crust, +; Fe oxide HC, *

Legends:

Vcsz: very-coarse-sand-sized; fsz: fine-sand-sized; msz: medium-sand-sized; csz: coarse-sand-sized; vfsz: very-fine-sand-sized; vf: very fine; op: organic pigment; OP: organic pigment; OM: organic matter; CC: clay coating; HC: hypo-coating; QC: quasi-coating; FN: Fe nodules; CCF: clay concentration feature; HA: heterogeneous aggregates; ++: 10-20%; +: 5-10%; **: 5%-2%; *: <2%

Notes: depth

1: might be mistaken with MS-S12, but MS-S12 belongs to the earlier period paddy field nonetheless

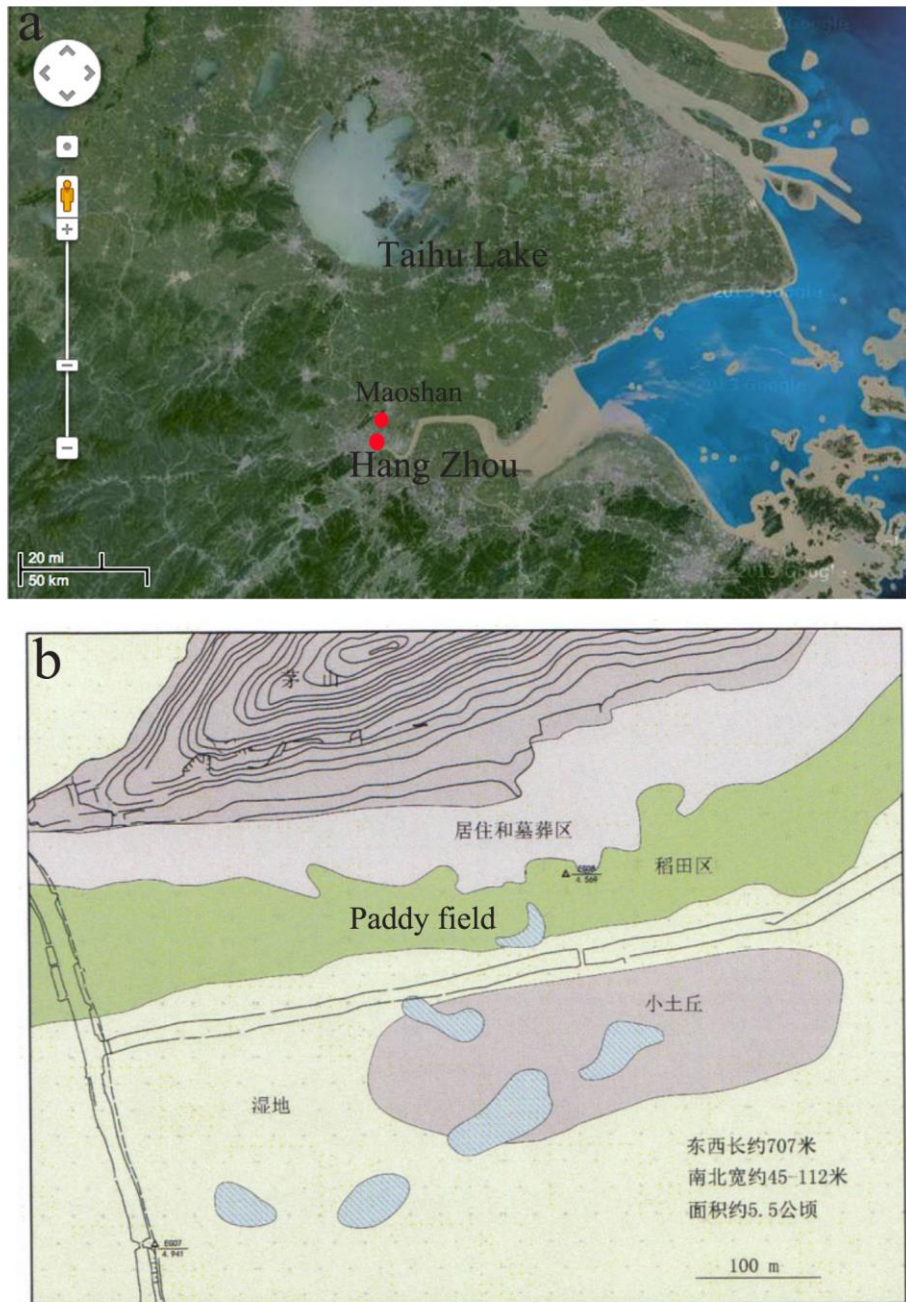


Figure 1: geographic location of the rice paddy field.

a: Google map of the research area, showing the site, the Taihu Lake and the Hangzhou Bay;

b: location of the Maoshan site, between the Maoshan Hill and the alluvial plain

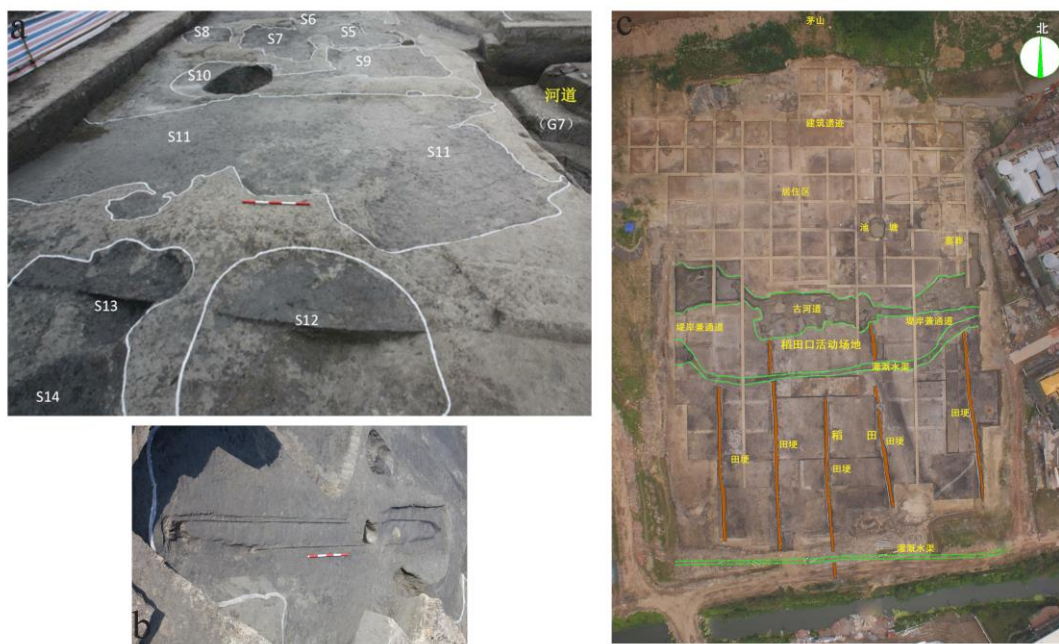


Figure 2: excavation at Maoshan.

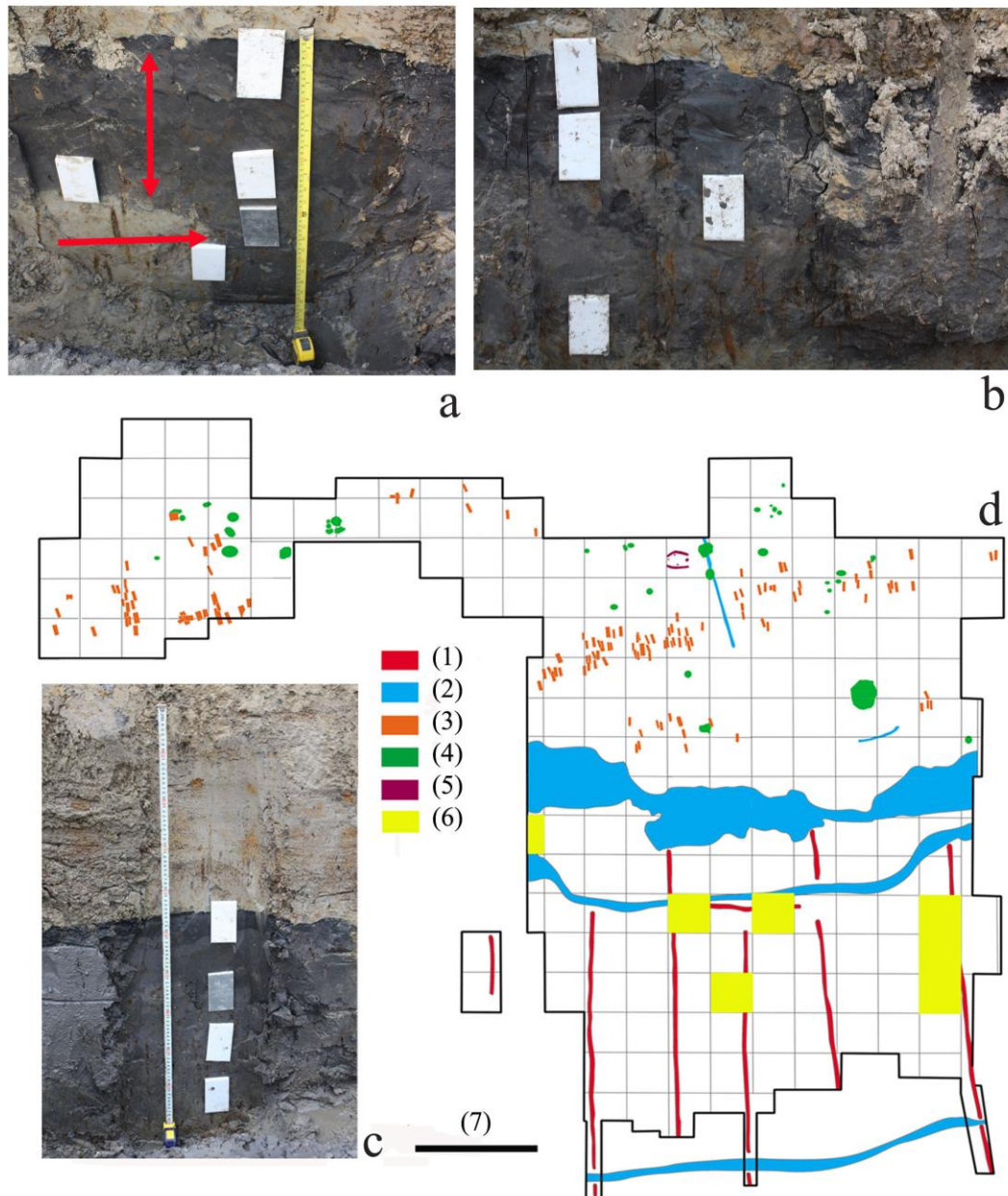


Figure 3: stratigraphies and sampling plans. a: Profile 4 showing the greyish-darkish later-period paddy field deposits (two-head arrow) and earlier-period paddy field deposits (red arrow); metal boxes show sampling locations for micromorphology, same blow; b: profile examined at the park to the east of the Maoshan site, in roughly same stratigraphic order as those examined in the field, the greyish-darkish alluvial materials overlies on top of pale-yellowish alluvial materials and covered by light yellowish flooding deposits; c: Profile 2 showing the peat-like deposits and the underlying greyish-darkish later-period paddy field deposits; d: excavation outline and sampling plans. (1) small pathways across the paddy field; (2) later-period ditches; (3) burials; (4) pits; (5) houses; (6) sampling locations, in addition to these, locations for off-site samples and modern rice paddy soils are not showed here; (7) bar length = 30m.

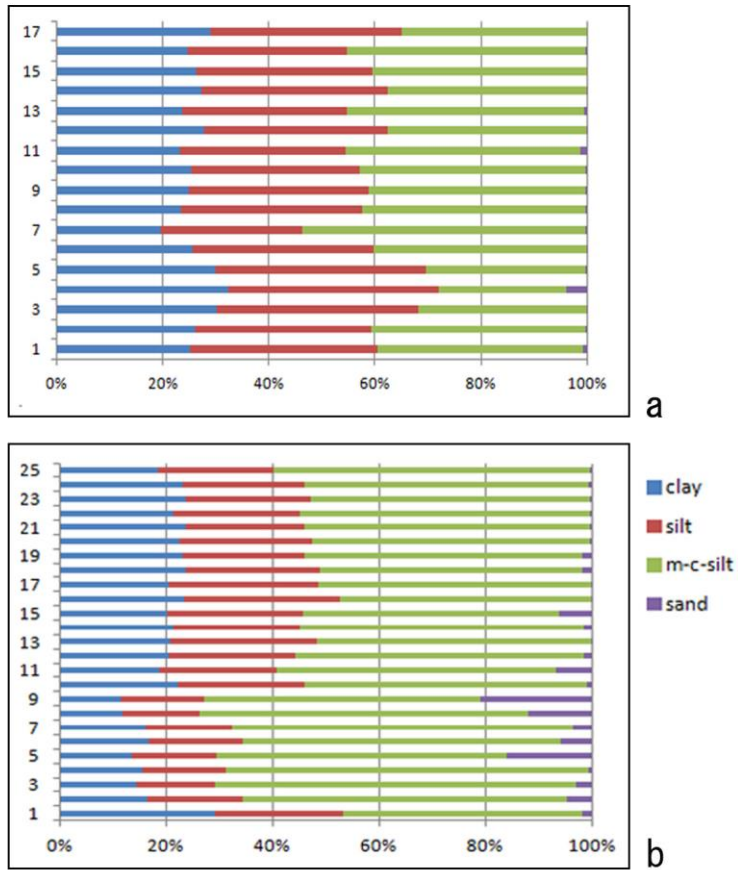


Figure 4: results of particle size distribution.

a: particle size distributions of 17 samples collected from a off-site sequence (section 1, MSP1); 17-1, bottom to top;

b: particle size distributions of 25 samples collected from section 2 (MSP2) from the paddy field, 25-1, bottom to top.

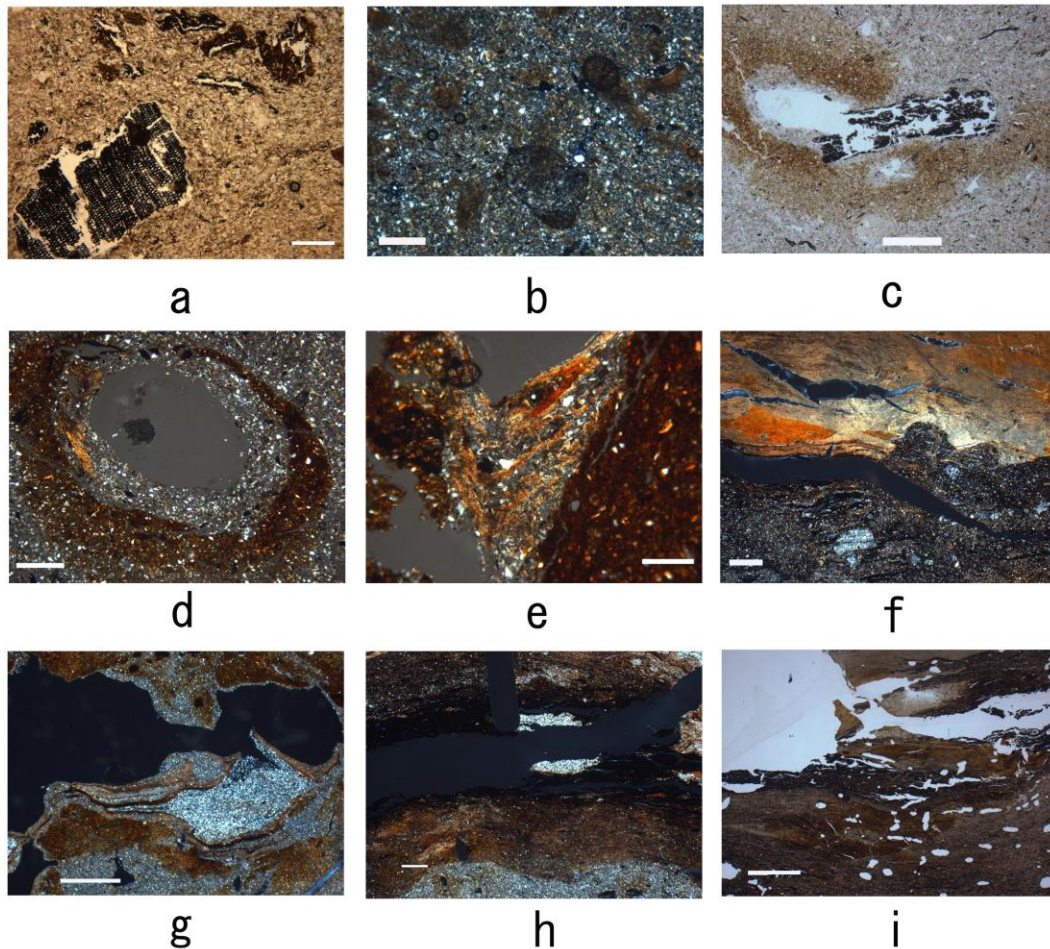


Figure 5: micromorphological images from Maoshan.

- a: later-period charcoal and organic aggregates (MSP10:1), 400 μm (scale bar length, same below), PPL (plane-polarized light, same below);
- b: later-period dusty clay concentration features as a result of irrigation (MSP10:2), 50 μm , XPL (cross-polarized light, same below);
- c: early-period charcoal in a void and Fe oxide feature (MSP10:3); 2.5 mm, PPL;
- d and e: later-period Fe oxide features and concentric dusty clay features (MSP7:2) resulting from chemical reactions and physical movement of clay particles respectively due to multi-episodes of wet-dry alternations, note iron-depletion and enriching areas in d, 500 and 200 μm respectively, XPL;
- f: the transition from later-period paddy field to weak peat growth (MSP6:1), note the presence of very-coarse-sand-sized quartz, 500 μm , XPL;
- g: later-period Fe oxide feature and multi-period dusty clay features (MSP2:3), 2 mm, XPL;
- h: the transition from later-period paddy field to peat growth (MSP2:1), note the brownish clayey layer sandwiched between the organic-rich peaty layer and the silty layer, 2.5 mm, XPL;
- i: the transition from the alluvial sediment to peat growth (off-site sample), note the vesicle voids with smooth walls, 1.5 mm, PPL.

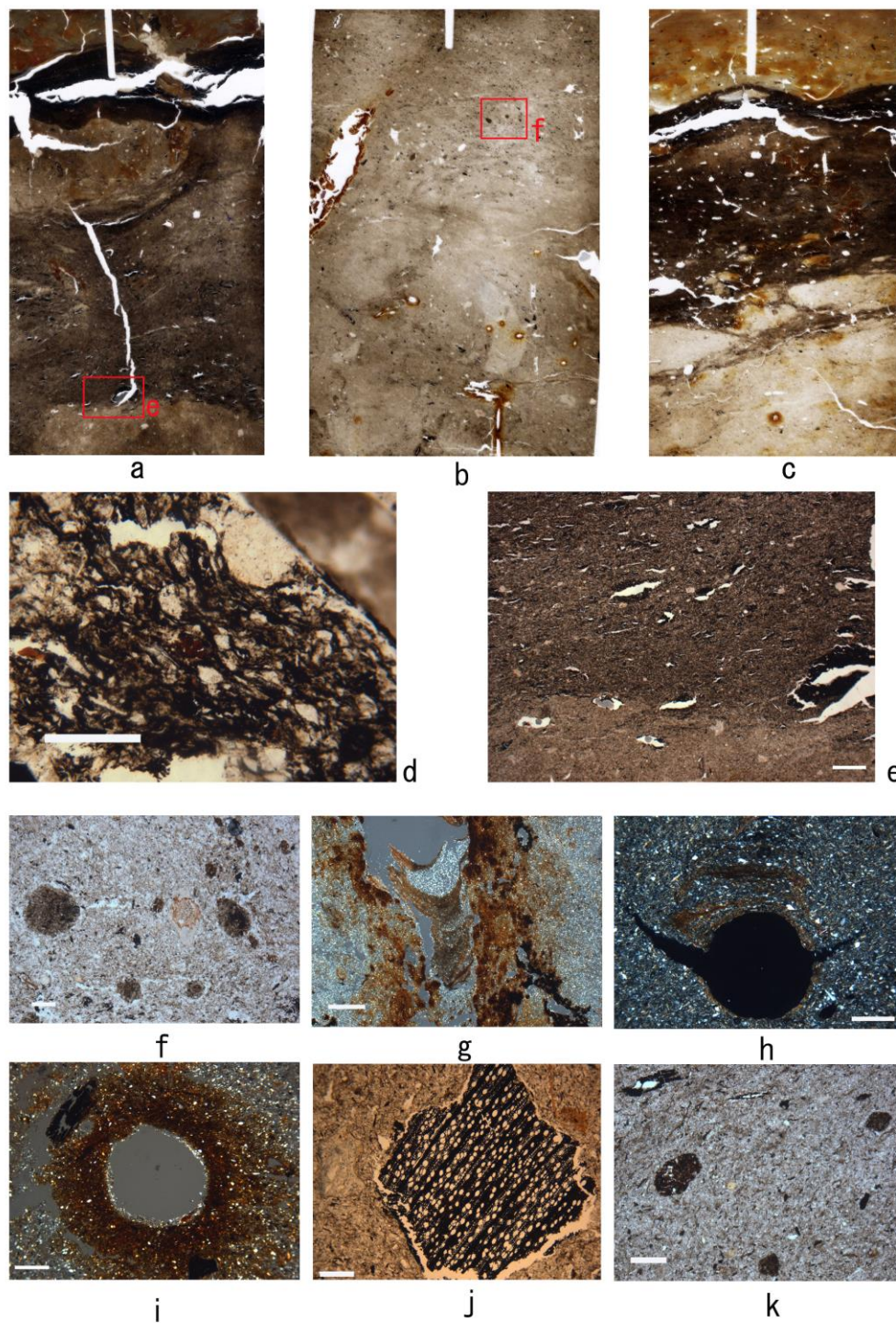


Figure 6: scanned and micromorphological images from Maoshan.

a: scanned image of MSP2:1, image size 4.5×8.5 cm;

b: scanned image of MSP7:2, note the disturbed soil structure, 5×8 cm;

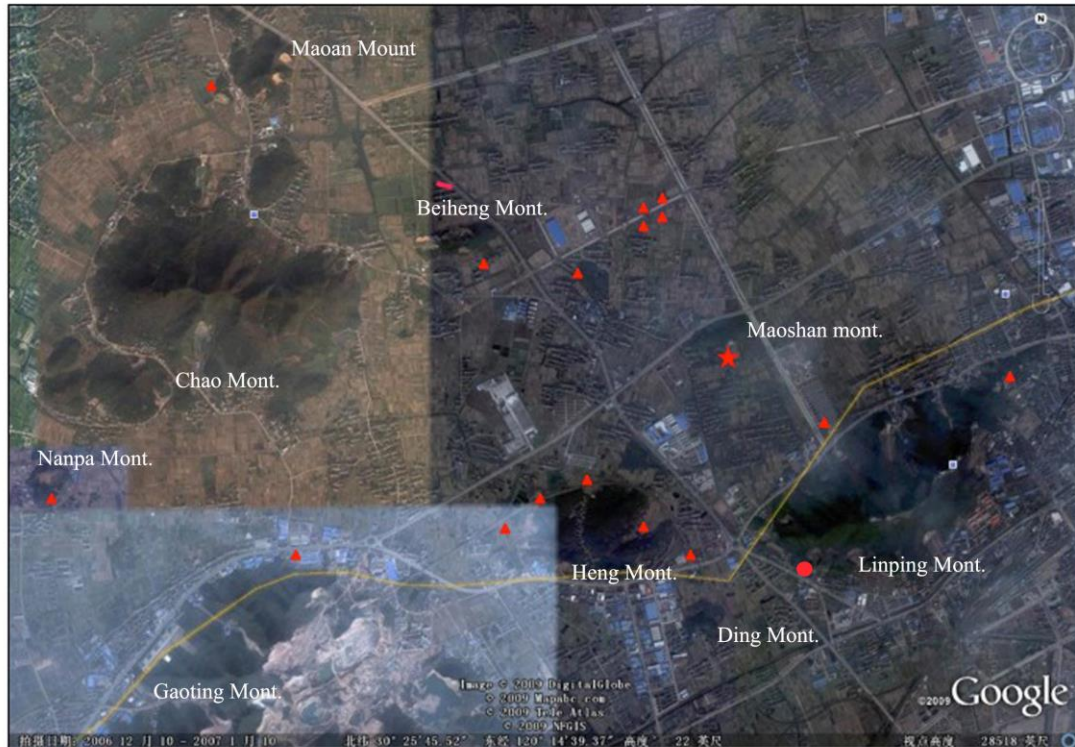
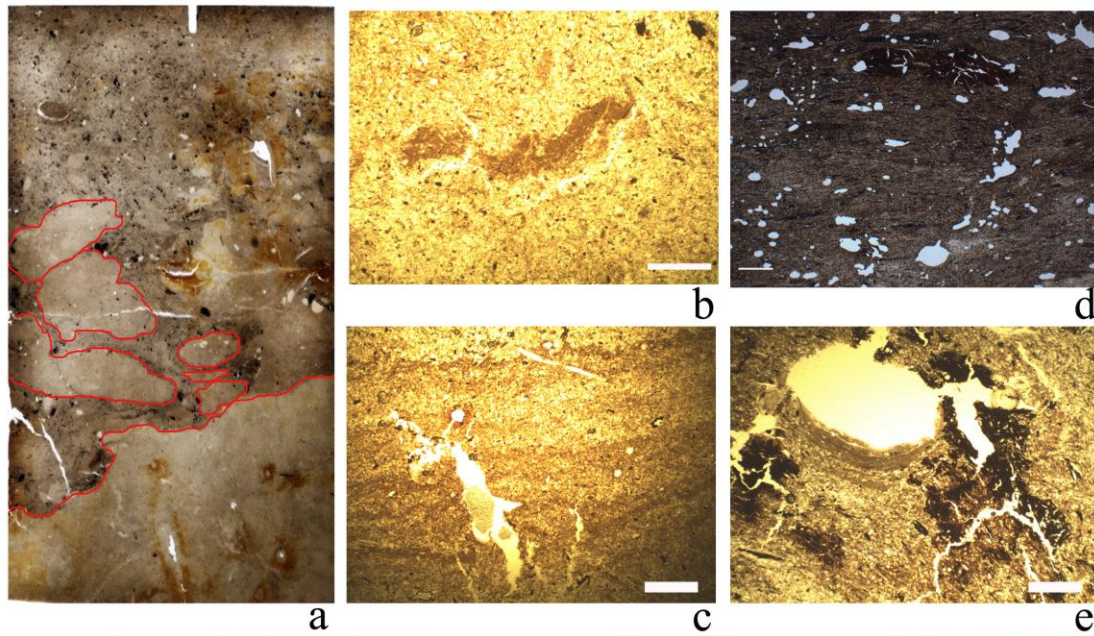
c: scanned image of MSP1:2 (off-site sample), note the homogeneous and less-disturbed soil structure, 4×7.5 cm;

d: later-period anthropogenic inclusions (MSP10:1), dung fragment, $500 \mu\text{m}$, PPL;

e: horizontally distributed thin lenses of organic materials (MSP2:1), 1.6mm , PPL;

f: later-period anthropogenic inclusions (MSP7:2), $500 \mu\text{m}$, PPL;

g: early-period Fe oxide and dusty clay features (MSP2:4), 2 mm, XPL;
h: later-period Fe oxide features, note the alternation of iron-rich and depletion areas (MSP5:2), 100 μm , XPL;
i: later-period charcoal in void and Fe oxide feature (MSP7:3), 200 μm , XPL;
j: early-period charcoal with well-preserved plant tissue structure (MSP10:3), 250 μm , PPL;
k: early-period anthropogenic inclusions (MSP10:3), 2 mm, PPL.



★ Maoshan site ▲ Contemporary Liangzhu sites: ● off-site profile f
cemeteries and settlements

Figure 7: scanned and micromorphological images from Maoshan

- a: scanned image of MSP10-1, showing later-period ploughing and cutting marks, note the whitish aggregates been churned up from the lower layer; image length 5.5×8 cm;
- b: earlier-period clay concentration features (MS-S19), note the darkish colour and diffuse boundary with the groundmass, 500 μm , PPL;
- c: earlier-period crust features (MS-S10), note the voids within these crusts, 850 μm , PPL.
- d: vesicle voids, MSP1:2, 1 mm, XPL;
- e: off-field charcoal (MS-Park), note the dust clay coatings around the void, 500 μm , PPL;
- f: locations of Maoshan and other contemporary Liangzhu-period sites, including cemeteries and settlements. Although the functions of particularly the settlement sites are not well understood, it can be seen from the map that most of the sites are indeed situated very close to small mountains in this area.