

Identification of the Single Base Change Causing the Callipyge Muscle Hypertrophy Phenotype, the Only Known Example of Polar Overdominance in Mammals

Brad A. Freking,^{1,4} Susan K. Murphy,² Andrew A. Wylie,² Simon J. Rhodes,³ John W. Keele,¹ Kreg A. Leymaster,¹ Randy L. Jirtle,² and Timothy P.L. Smith¹

¹U.S. Department of Agriculture, Agricultural Research Service, U.S. Meat Animal Research Center, Clay Center, Nebraska 68933-0166, USA; ²Department of Radiation Oncology, Duke University Medical Center, Durham, North Carolina 27710, USA; ³Department of Biology, Indiana University-Purdue University Indianapolis, Indianapolis, Indiana 46202, USA.

A small genetic region near the telomere of ovine chromosome 18 was previously shown to carry the mutation causing the callipyge muscle hypertrophy phenotype in sheep. Expression of this phenotype is the only known case in mammals of paternal polar overdominance gene action. A region surrounding two positional candidate genes was sequenced in animals of known genotype. Mutation detection focused on an inbred ram of callipyge phenotype postulated to have inherited chromosome segments identical-by-descent with exception of the mutated position. In support of this hypothesis, this inbred ram was homozygous over 210 Kb of sequence, except for a single heterozygous base position. This single polymorphism was genotyped in multiple families segregating the callipyge locus (*CLPG*), providing 100% concordance with animals of known *CLPG* genotype, and was unique to descendants of the founder animal. The mutation lies in a region of high homology among mouse, sheep, cattle, and humans, but not in any previously identified expressed transcript. A substantial open reading frame exists in the sheep sequence surrounding the mutation, although this frame is not conserved among species. Initial functional analysis indicates sequence encompassing the mutation is part of a novel transcript expressed in sheep fetal muscle we have named *CLPGI*.

[The sequence data described in this paper have been submitted to GenBank under the following accession numbers: G74891-G75331 for all STS generated; AF401294 for the amplicon identifying the specific callipyge mutation; AF533009 for the partial expressed transcript.]

Callipyge is a muscle hypertrophy phenotype in sheep (Jackson and Green 1993), resulting from an apparent single locus mutation in the telomeric region of ovine chromosome 18 (*CLPG*; Cockett et al. 1994). Dramatic effects on muscle development, carcass composition, shape, and meat quality are hallmarks of the callipyge syndrome (Koohmaraie et al. 1995; Freking et al. 1998b, 1999). The muscle hypertrophy phenotype is expressed in a unique parent of origin-dependent manner referred to as paternal polar overdominance (Cockett et al. 1996; Freking et al. 1998a). The only genotype that expresses muscle hypertrophy in this type of gene action is one in which the mutant callipyge allele (C) is inherited from the sire and a normal allele (N) from the dam (genotype CN). Interestingly, sheep with two copies of the mutant allele (genotype CC) did not express muscle hypertrophy even though other phenotypes such as increased longissimus muscle calpastatin enzyme activity and increased longissimus muscle shear force were observed relative to noncarrier (genotype NN) or maternal-derived heterozygous (genotype NC) genotypes (Freking et al. 1999). Understanding the mechanism by which the

CLPG mutation alters these phenotypes would improve our basic knowledge of factors involved in muscle growth, carcass leanness, and meat quality, as well as delineate unique forms of genomic imprinting regulation.

Two independent efforts to identify the *CLPG* mutation in sheep have resulted in refinement of physical and comparative maps of the region on chromosome 18 (Fahrenkrug et al. 2000; Berghmans et al. 2001). Animals with genetic recombination events were used to reduce the candidate interval to an approximately 400-Kb region containing plausible candidate genes such as delta, *Drosophila*, homolog-like (*DLK1*; also known as *PREF-1*) and maternally expressed gene 3 (*MEG3*; also known as *GTL2*). The homologous regions on human chromosome 14 and mouse chromosome 12 have been intensively studied because *DLK1* and *MEG3* are reciprocally imprinted and expressed from the paternal and maternal alleles, respectively (Schmidt et al. 2000; Takada et al. 2000; Wylie et al. 2000). The human *DLK1-MEG3* region also has a conserved spatial, structural, and epigenetic organization comparable to that of *IGF2-H19* region (Wylie et al. 2000). These include common CTCF binding sites, differentially methylated CpG islands, and downstream enhancer sequences. Charlier et al. (2001b) reported that the homologous imprinted domain in sheep contains the imprinted transcripts *DAT*, *PEG11*, *antiPEG11*, and *MEG8*, in addition to

⁴Corresponding author.

E-MAIL freking@email.marc.usda.gov; FAX (402) 762-4173.

Article and publication are at <http://www.genome.org/cgi/doi/10.1101/gr.571002>. Article published online before print in September 2002.

DLK1 and *MEG3*. The imprint status of the first four of these genes in humans is unknown. The *CLPG* genotype status does not alter the imprinting polarity of these genes, but does affect the expression pattern of several transcripts from the *CLPG* interval during muscle development (Bidwell et al. 2001; Charlier et al. 2001a). However, the mutation responsible for different phenotypes associated with callipyge in sheep remains elusive. Our objective was to identify the specific DNA mutation responsible for the unique gene action producing the muscular hypertrophy phenotype.

RESULTS

Development of a DNA Panel for Mutation Detection

The region containing *CLPG* was small enough to make complete sequencing of the interval a realistic approach to discover the mutation. We chose a strategy of PCR amplification and direct sequencing of the products to detect nucleotide sequence differences among animals of known *CLPG* genotypes. Principal difficulties in applying this approach were the potential to overlook large-scale inversions and the presence of nucleotide sequence variation occurring in sheep independent of the causative mutation. To ensure detection of inverted chromosomal segments on mutated versus normal chromosomes, overlapping amplicons were used that spanned the entire interval, and DNAs from both homozygous classes were used as template. At the boundaries of segments inverted by a putative mutation, primer pairs would successfully amplify normal chromosomes but fail on templates homozygous for the mutation.

A more difficult problem was presented by the relatively high frequency of polymorphisms among sheep in our panel (see below). Initial sequencing utilized four affected (CN; hypertrophy phenotype), two normal (NN; normal phenotype), and two homozygous mutant (CC; normal phenotype) animals. It was postulated that single nucleotide polymorphisms (SNPs) heterozygous in affected and homozygous for alterna-

tive alleles in NN and CC animals were candidates for the causative mutation. Areas containing coding regions of previously identified candidate genes (*DLK1*, *MEG3*; Fahrénkrug et al. 2000) were first sequenced in these animals. Although polymorphisms were detected, none uniquely differentiated the *CLPG* alleles.

We sought a more efficient approach to identify all types of potential mutations within the broader region containing *CLPG*. An experiment at the U.S. Meat Animal Research Center (MARC) used nine Dorset rams expressing the muscle hypertrophy phenotype with pedigree information tracing back to Solid Gold, the first animal known to express the phenotype. These rams were extensively progeny-tested as part of the grandparent generation of the MARC resource population. All rams were proven to be heterozygous at *CLPG* (Freking et al. 1998a); however, there were significant differences in marker heterozygosity among this group of rams. Chromosome-wide marker heterozygosity for six rams chosen to be part of the mutation detection panel is shown in Figure 1. The *CLPG* locus has been mapped by breakpoint mapping to the interval between MULGE5 and OY3 microsatellite markers (Berghmans et al. 2001), at approximately position 86–87 cM in Figure 1. This figure illustrates that two of these rams (198812900 and 199112900) exhibited no marker informativeness in the critical region of chromosome 18. Both rams were born into the flock that produced Solid Gold.

The lack of marker informativeness in the two rams, proven to be heterozygous at *CLPG*, suggested they would be useful for detecting the mutation responsible for the muscle hypertrophy phenotype. The pedigree for 198812900 was of particular interest, as the most telomeric heterozygous marker was microsatellite locus HH47, over 25 cM centromeric from *CLPG* (Freking et al. 1998a). Based on pedigree and marker data, it was hypothesized that this ram was identical-by-descent for the telomeric one-third of the chromosome, except for the *CLPG* mutation, which would be predicted to reside only on the paternally derived chromosome. One of the inbreeding paths identified for 198812900 fits

this hypothesis (common ancestor S318167; Fig. 2). Ram S318167, the sire of Solid Gold, was normal in appearance according to his owner, indicating that the ram was not CN. Moreover, the owner stated that S318167 was used extensively in the flock but produced only a single offspring (Solid Gold) displaying characteristic muscular hypertrophy, suggesting that S318167 was NN, and that the *CLPG* mutation occurred in the germ cell that produced Solid Gold. Because 198812900 was only two generations removed from Solid Gold, the likelihood of additional mutations not involved in *CLPG* having accrued in the vicinity of the locus is small. On this basis, 198812900 was chosen for complete sequencing of the entire region containing *DLK1* and *MEG3*, as detection of a polymorphism in this region should reveal the causative mutation.

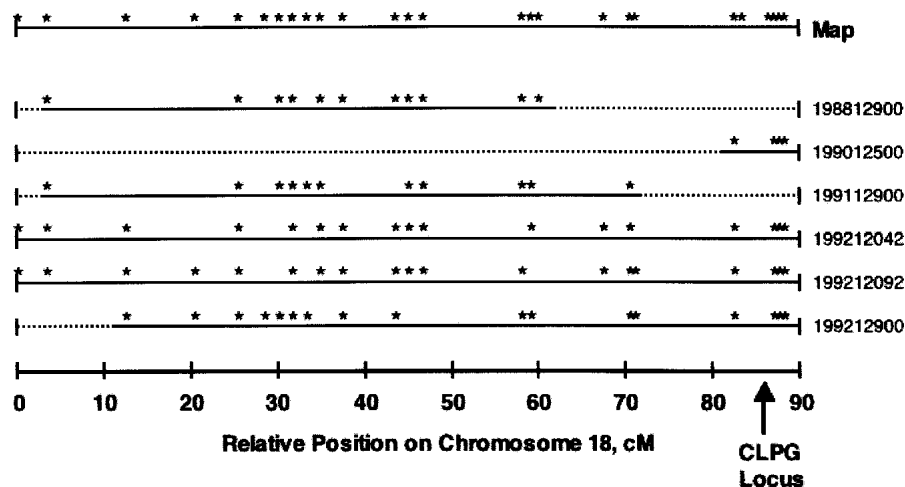


Figure 1 Marker informativeness among heterozygous (by progeny testing) *CLPG* Dorset rams used in the mutation discovery panel. Asterisks on the top row (Map) indicate relative positions of markers used to construct the chromosome 18 linkage group. The arrow (position 86–87 cM) indicates relative position of the *CLPG* locus. Markers heterozygous are presented as asterisks for each ram. All rams were genotyped for all markers on the chromosome 18 map. Regions of the linkage group for each ram not flanked by an informative marker are indicated by dotted lines. Of particular interest, rams 198812900 and 199112900 exhibit marker homozygosity in the critical region containing *CLPG*.

A second ram, 199112900, also appeared to be identical-by-descent in the telomeric region with the exception of the mutation, as markers telomeric to ILSTS054 (position 71 cM) were not informative. However, the extent of the uninformative region was smaller than that of 198812900, and the dam of 199112900 was not recorded, so an inbreeding path such as the one defined for 198812900 could not be identified. Nevertheless, detection of a polymorphism in this ram could also uncover the *CLPG* mutation, providing confirmation of results obtained for 198812900. Therefore, these two rams were both used to detect the mutation, but completion of sequencing focused on 198812900 due to his known inbreeding.

These key rams permitted establishment of the most efficient screen available for the causative polymorphism. Genomic DNAs from the parents of Solid Gold were not available for testing the hypothesis for the origin of the causative mutation. A panel of animals for SNP discovery and validation was selected that included the six progeny-tested heterozygous Dorset rams (CN genotype, Fig. 1), two CN Dorset \times Romanov F1 rams, two NN Romanov ewes, and two CC rams from an introgression flock at MARC. The two inbred CN rams were used for detection of the causative polymorphism, while NN and CC animals established normal and mutant alleles, respectively. Only products from primer pairs that successfully amplified all genotypes were used for sequencing. This prevented allele amplification bias that could potentially obscure the causative mutation.

Coverage of Candidate Interval by PCR Amplification and Sequencing

A total of 388 unique primer pairs successfully amplified sheep genomic DNA and produced sequence information targeting the region containing *CLPG*. Individual amplicons were not considered successfully amplified and finished as a sequence until at least one of the two homozygous CC templates, in addition to the inbred 198812900 ram, produced a quality sequence read. This approach allowed us to exclude allele amplification bias as the cause of homozygosity in 198812900. The resulting 441 contigs generated 400,989 overlapping bases of quality sequence (Phred score >20) in 198812900 for a total of 215-Kb coverage of the region. Individuals comprising the remainder of the panel contributed between 244,020 and 311,866 bp each of similar quality sequence. Comparison to the previously published sheep genomic sequence of the region (AF354168) suggested that over 97.5% of this candidate interval has been examined for variation in the inbred animal. A total of 5466 bases of the reference sequence was not covered specifically with 198812900, although only 3,335 of these bases are within the new telomeric exclusion boundary (see section below on Further Genetic Recombination Exclusion). Three small regions (total 1693 bp) generated amplicons that differed from the reference sequence in the middle of the amplicon, while matching one or both sides.

Mutation Discovery

In total, 616 polymorphisms were discovered, 1 SNP for every 340-bp unique sequence. Over two-thirds (67.7%) of the identified polymorphisms were purine-purine (A/G) or pyrimidine-pyrimidine (C/T) transition polymorphisms. Purine-pyrimidine transversions (A/T 3.7%; C/G 8.0%; A/C or G/T 12.8%) accounted for 24.5%, and small insertion-deletion

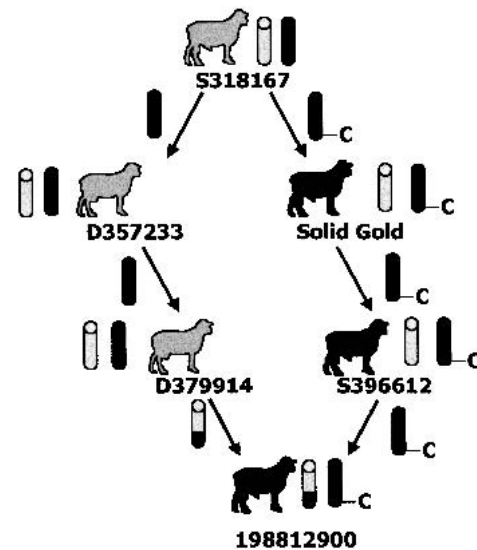


Figure 2 Ram 198812900 exhibits an inbreeding path with the sire (S318167) of Solid Gold contributing on both maternal and paternal sides of the pedigree. We hypothesized that this inbreeding path has allowed the region to be identical-by-descent, except for the *CLPG* mutation, which we propose occurred in the gamete that produced Solid Gold. The C identifies the mutated allele, and individuals with the muscle hypertrophy phenotype are identified as solid black sheep; those with normal phenotype are identified as gray sheep. Wild-type chromosomes are represented as gray chromatids. A recombination event is depicted to have occurred on the maternal side of the pedigree; however, the event could have occurred on either or both sides to generate marker informativeness in the centromeric region of chromosome 18.

events accounted for 7.6% of the total polymorphisms identified. No inversions or major deletions were observed from animals in our discovery panel.

Data presented in Table 1 summarize the SNP information by animal. Heterozygosity for individuals varied widely over this region, as expected. The overall rate of heterozygosity per bp sequenced ranged from 0.0 to 0.0011738. Four of the Dorset rams (not inbred in the region), the two Romanov ewes, and the two F1 rams produced all of the heterozygous positions discovered. The remaining four individuals allowed us to exclude polymorphisms that were not causative for *CLPG*. As anticipated given the recency of the mutation, the two CC animals did not exhibit polymorphism over the entire sequenced interval. A single common haplotype was observed in phase with the C allele for the two CC rams and the two inbred CN rams. In this region, all eight chromosomes from these four animals were identical-by-descent to a gamete that resulted in the sire of Solid Gold, except at *CLPG*. Two haplotypes were observed for the entire region in the inbred heterozygous rams, differing only by a single A/G polymorphism located at position 103,894 of AF354168 and position 267 of the GenBank STS AF401294 (Fig. 3A,B). This polymorphism was the only position heterozygous for all CN rams in the discovery panel and homozygous at alternative alleles for the Romanov ewes (NN) and the composite rams (CC). It therefore met our established criterion for the polymorphism screen. Homozygous genotypic data from the remaining 615 polymorphic positions give direct evidence that 198812900 and 19912900, in addition to the two CC animals, are homozygous by descent for this entire interval.

Table 1. SNP Information Obtained From Our Discovery Panel

Breed	Callipyge genotype ^b	Animal	Total number SNP genotypes ^c	Unique positions	Heterozygous positions	Het ^d
Dorset(D)	CN	198812900	1045	600	1	0.0000048
Dorset	CN	199112900	1020	606	1	0.0000048
CIII ^a	CC	200023844	926	575	0	0.0
CIII	CC	200023886	898	564	0	0.0
Romanov(R)	NN	199214022	815	517	86	0.0004103
Romanov	NN	199214305	899	574	246	0.0011738
Dorset	CN	199012500	1006	596	145	0.0006919
Dorset	CN	199212042	886	561	236	0.0011261
Dorset	CN	199212092	850	540	232	0.0011070
Dorset	CN	199212900	951	573	81	0.0003865
F1DxR	CN	199360105	887	559	231	0.0011022
F1DxR	CN	199360365	822	521	184	0.0008779

^aCIII population contains introgressed *CLPG* allele from Dorset into terminal sire composite population (1/2 Columbia; 1/4 Suffolk; 1/4 Hampshire). The new composite population is on average 1/16 Dorset germplasm.

^bGenotype at *CLPG* locus with C representing the mutant allele, N the normal allele; the paternally-derived allele is listed first.

^cMultiple sequence reads contributed data for each animal-SNP combination.

^dHeterozygosity per base pair over the covered region of 209,580.

Further Interval Exclusion Using Genetic Recombination

Several polymorphisms were developed into MALDI-TOF mass spectrometry assays (Table 2) and genotyped on a set of animals from a study designed to evaluate all 16 mating combinations of *CLPG* genotypes (K. Leymaster, unpubl.). Two individual animals had definitive phenotypic carcass data and recombinant marker genotypes within the region. These two individuals had evidence of recombination on an informative *CLPG* chromosome between genetic markers CSSM18 (position 84.9 cM) and haplotype for OY3 / OY15 / OY5 (position 88.6 cM), and were genotyped along with parental and grand-parental DNAs for the new SNP markers.

Individual 199860459, produced by mating a CC ram to a CN dam, did not provide definitive phase information on the maternal gamete for the new markers. These markers generated only like-heterozygote genotypes or were noninformative. Individual 199860287 exhibited the extreme muscle hypertrophy phenotype and was produced by mating two NC parents. A recombination event on the paternally derived gamete showed CSSM18 to be in phase with the inherited C allele, while OY3 was not. Phase information on the paternal gamete at the *MEG3.9* SNP locus was definitive and also not in phase with the C allele. This genotypic and phenotypic information dictates that *CLPG* is centromeric from the *MEG3.9* position in the genome (base 158520 on AF354168) and the observed recombination event on this gamete is between markers CSSM18 and *MEG3.9*. Using a defined recombinant break point, we definitively identified the new telomeric boundary for the callipyge locus to be *MEG3.9*. The causative SNP remains within this newly defined genetic boundary.

Frequency of Causative SNP Allele in Diverse Populations

The causative SNP would be expected only in descendants of Solid Gold, whereas a closely linked polymorphism would likely exist among unrelated sheep. To provide further evidence that the SNP identified by the sequencing screen represents the causative mutation, a genetically diverse panel of breeds widely used in commercial sheep production was constructed (see MARC SheepDP v1.1 in Methods below). The

objective was to estimate the frequency of alleles for polymorphisms that passed the initial screens in the discovery panel. A mass spectrometry assay for the causal SNP (9571–268.2 in Table 2) generated genotypes for 90 individuals across the nine breeds. Frequency of the normal allele (nucleotide A at position 267 on AF401294) was 100% for 180 alleles in this panel. Of particular interest was a sample of ten Dorset rams with normal muscle phenotype, as this was the breed of the progenitor animal. None of the 20 chromosomes in this sample had the causative G for A mutation. This information adds to the preponderance of evidence that this mutation represents *CLPG*.

Preliminary Functional Evaluation of Mutated Region

The mutation is not within the boundary of any previously identified transcript (Fig. 3). Therefore the mechanism by which this mutation causes the muscle hypertrophy phenotype is not obvious. Using a 144-bp sequence from the ovine genome centered on the identified SNP, corresponding regions of the cattle, human, and mouse genomes were identified between the *DLK1* and *MEG3* genes. Alignment of sheep, cattle, human, and mouse genomic sequences indicated a high degree of conservation in the region (Fig. 4). Complete conservation of sequence across these four species was observed for >74% of nucleotides. This indicates that this region has biological significance.

Various GenBank databases were searched via BLASTN analysis to identify corresponding transcripts, including dbEST for human, mouse, and other species, using the genomic region sequence for each species as reference. No significant similarity to EST sequence in the database was identified that corresponded to the genomic sequence. Using the Mapviewer tool at the National Center for Biological Information (NCBI; www.ncbi.nlm.nih.gov/cgi-bin/Entrez/hum_srch), a predicted gene was identified in humans (LocusLink ID 123090; gene prediction method GenomeScan) that spans the area homologous to the *CLPG* mutation. The sequence containing the SNP lies within the 23,416-bp intron 6 of the predicted transcript, suggesting that it does not form

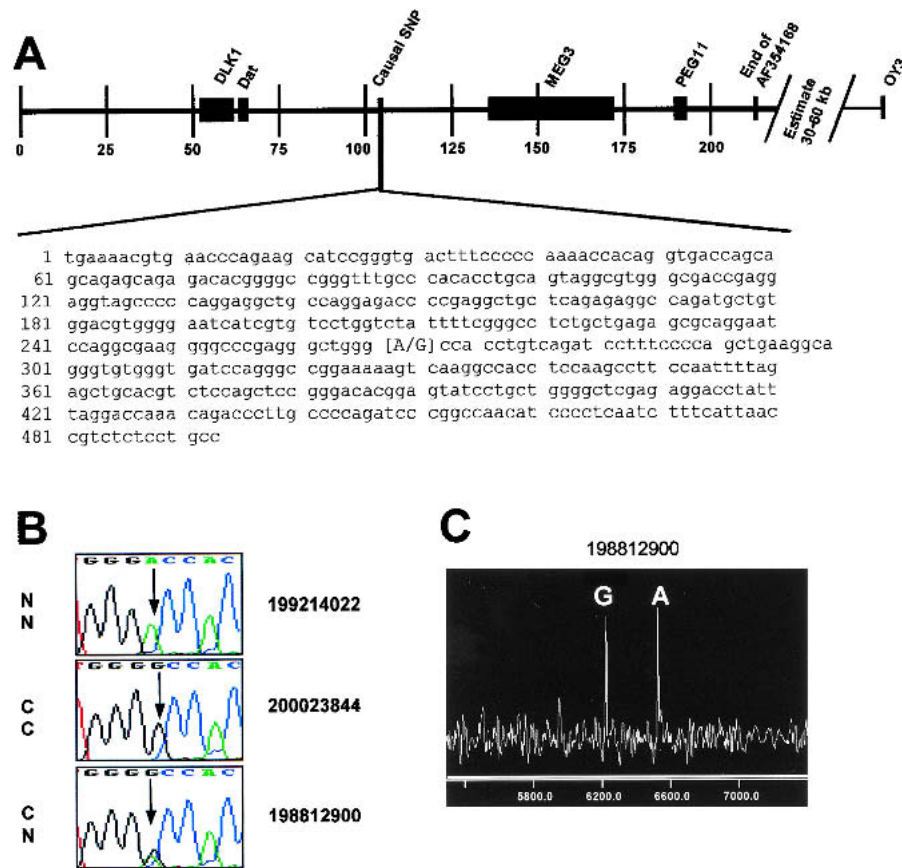


Figure 3 Identification of the causal base change (SNP) for *CLPG*. (A) Position of the identified SNP relative to previously identified candidate genes (*DLK1*, *DAT*, *MEG3*, and *PEG11*). Microsatellite marker *OY3* was the previously defined telomeric boundary. Scale is set to 1 = 1000 bp of the sheep genomic sequence in GenBank accession AF354168. The SNP is at position 267 of the sheep STS sequence in accession AF401294. (B) Sequence traces representing the different genotypes present at the noted SNP. A Romanov ewe (NN at *CLPG*) displays the homozygous adenine residue, while the progeny-tested composite ram (CC at *CLPG*) displays the homozygous guanine residue. The inbred ram 198812900 (CN at *CLPG*) exhibits both residues at this position. (C) Results from a MALDI-TOF mass spectrometry genotyping assay for this SNP. The two alleles are represented as different mass extension products from a probe primer with the 3' end adjacent to the SNP (Table 2). Probe extension in the presence of a specific di-deoxy termination mix creates the different analyte masses for each allele.

a part of this putative human gene. Moreover, no significant open reading frame (ORF) containing the mutation is conserved among the genomic segments of the four species.

To determine whether the region containing this mutation might be involved in gene regulation, it was examined using the Transcription Element Search System (TESS; www.cbil.upenn.edu). A number of motifs were identified near the SNP that were consistent with binding of muscle-related transcription control factors (data not shown). Specifically, the SNP alters a sequence motif with homology to a muscle regulatory factor (MRF) binding site (Fig. 4). To determine whether this site can be recognized by MRFs, and whether the mutation affects this putative binding, oligonucleotides corresponding to the C and N alleles were synthesized and used in electrophoretic mobility shift assays (EMSAs) with MyoD protein in the presence of the E47 partner protein (Fig. 5A). Results demonstrated that both sequences bind the MyoD complex, with similar affinities. Thus, the mutation does not act through altered affinity for this muscle transcription factor complex. However, it is possible that binding affinity may be

affected by epigenetic processes, as this region of the genome contains imprinted genes and CpG-rich imprinting regulatory elements that are methylated in a parent of origin-dependent manner (Wylie et al. 2000; Charlier et al. 2001b).

Differential methylation of CpG regions is a key component of regulation of imprinting. One of the potential models for polar overdominance would involve a reversal of the imprint from one parental origin to the other. Although the mutation does not affect a site for methylation, it could potentially have *cis*-acting effects on local methylation patterns or efficiency. Epigenetic modifications to the immediate region surrounding the SNP were therefore evaluated using bisulphite sequencing. Eleven CpG sites near the mutation were evaluated for methylation status in all four *CLPG* genotypes from fetal (n = 8 animals) and adult stages (n = 8 animals). Fetal-stage DNA samples exhibited a consistent methylation pattern that did not differ between the genotypes. In adults, overall methylation levels were increased relative to the fetal samples. Furthermore, NN genotypes exhibited the highest degree of methylation, CN and NC genotypes an intermediate level, and CC genotypes the lowest level of methylation. However, the methylation exhibited in this region is not parent of origin-dependent, and phenotypic status does not correlate with the degree of methylation. This indicated that altered methylation in the vicinity of the SNP is

not the mechanism by which this mutation affects the muscle hypertrophy phenotype.

To investigate the possibility that the sequence is part of a previously unrecognized expressed transcript, fetal sheep longissimus muscle RNA was reverse transcribed with random primers, and the resulting cDNA was amplified with primers (21911–21912) designed to amplify a 115-bp segment containing the mutation. This primer pair successfully produced a reverse transcriptase-dependent product with the correct sequence (data not shown), indicating that the sequence carrying the mutation represents a portion of an expressed transcript (Fig. 5B). Two additional reverse primers (22051 and 22052) were synthesized and also produced the appropriate products via RT-PCR in combination with primer 21911. To determine the direction of the transcript, cDNA synthesis was primed with either 21911 or 22051 prior to PCR with primers 21911–22052. Specific amplification was observed only from the cDNA produced with the 22051 primer, indicating that the transcript is produced in the direction heading from *MEG3* to *DLK1* (Fig. 5B). To obtain further sequence, cDNA

Table 2. Oligonucleotides for Amplification of Informative SNP Markers and Analytes Produced by MALDI-TOF MS Genotyping

SNP Marker name	SNP position on AF354168	Amplification primers ^a	PROBE primer ^b	Probe mass (m/z)	Amplicon length (bp)	Termination mixture	Analyte products	Analyte masses (m/z)
DLK1_406.1	47113	cactgcttgcctctctcc acttggtgcctaatcat	gaagccagagagcccgcg	5543.7	328	ddA/ddC	gaagccagagagcccgcg gaagccagagagcccgcg acaacaaacgtcaggccg	5840.9 6146.1 5759.8
DLK1_INTR1.1	54626	cacagcacactgcctagctc cgcttaacctatgagcctc	acaacaaacgtcaggccc	5446.6	270	ddC/ddG	acaacaaacgtcaggccctc gaaaggtatctgacagtggtc	6024.0 6215.1
9571-268.2	103894	tgccagagagagcgggttaac gaaaacgtgaacccagaagc	gaaaggtatctgacagtggtg	5941.9	515	ddA/ddC	gaaaggtatctgacagtggtc cacgtagcaacccgctcga	6519.3 5726.8
Meg3.1	139107	aggagaacaaaggccacctc ttcctttgtccctgtcaagc	cacgtagcaacccgctcg	5429.6	229	ddA/ddG	cacgtagcaacccgctcga atgggatcccatgttgaa	6032.0 5811.9
Meg3_enh2	151581	gtgtagaagccgccattg gggtcccagagtga	atgggatcccatgttgaa	5514.6	355	ddA/ddC	atgggatcccatgttgaa tgctcaccatccctcccacg	6141.1 6496.3
Meg3.13	157968	ttgttaagcgtccagtc acatctgagcgtggtcactg	tgctcaccatccctcccac	6183.1	539	ddC/ddG	tgctcaccatccctcccacg gaaagaggaggaattctgtg	7122.7 6543.3
Meg3.12	158139	ttgttaagcgtccagtc acatctgagcgtggtcactg	gaaagaggaggaattctgtg	6270.1	539	ddC/ddG	gaaagaggaggaattctgtg caatgaaaagccttgaag	6887.6 5524.7
Meg3.10	158394	ttgttaagcgtccagtc acatctgagcgtggtcactg	caatgaaaagccttgaag	5251.5	539	ddC/ddG	caatgaaaagccttgaag ggacacagaattcatctga	5877.9 5804.9
Meg3.9	158520	acacgttaagcgtggtcagatg gcctcgaaaggcgaaaaata	ggacacagaattcatctg	5507.7	337	ddA/ddT	ggacacagaattcatctga ccctctgaatgggtcactcct	6094.1 5698.8
Meg3.8	158616	acacgttaagcgtggtcagatg gcctcgaaaggcgaaaaata	ccctctgaatgggtcactc	5410.6	337	ddA/ddT	ccctctgaatgggtcactcct gggtcagactcccaggccca	5988.0 6361.2
Meg3.7	158663	acacgttaagcgtggtcagatg gcctcgaaaggcgaaaaata	gggtcagactcccaggccca	6064.0	337	ddA/ddT	gggtcagactcccaggccca atctctatgtatccaa	6970.6 5088.4
Meg3.5	158998	atggacaagcgtatagtgct aaggactgtgggttttctgc	atctctatgtatccaa	4791.2	382	ddA/ddC	atctctatgtatccaa atctctatgtatccagc	5393.6

^aUniversal sequence (acggatacaatttcacagg) placed at 5' end of the second locus specific primer listed.

^bPROBE primer is in sense direction relative to the first amplification primer.

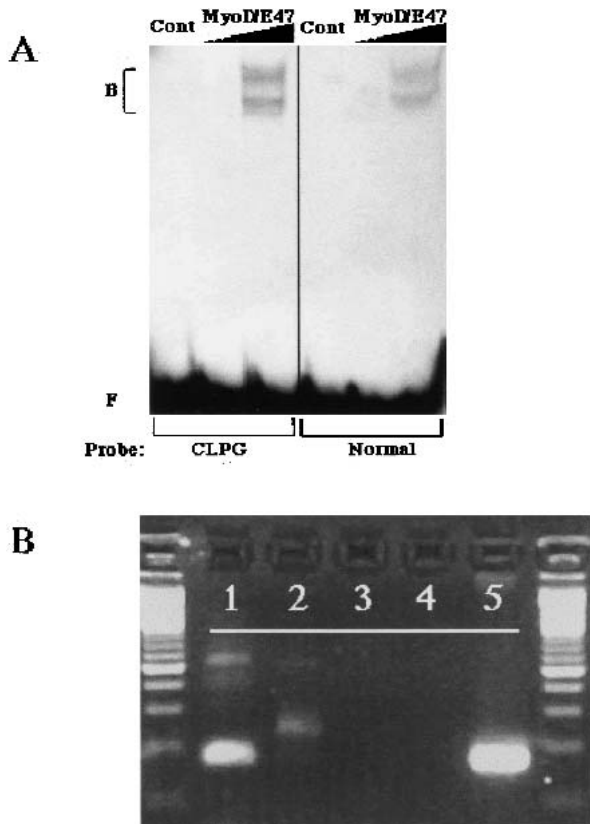


Figure 5 Functional analysis of the region that encompasses the *CLPG* mutation. (A) An electrophoretic mobility shift assay using MyoD/E47 proteins and radiolabeled oligonucleotide probes representing the *CLPG* region. Probes were incubated either with no protein (Cont), 1 μ L in vitro translated MyoD/E47, or 5 μ L MyoD/E47, and the resulting complexes (B) were separated from free probe (F) by electrophoresis. MyoD/E47 forms two complexes with target DNA elements: the upper complex contains full-length proteins, and the lower complex contains a smaller translation product of E47 (Lemerrier et al. 1998). (B) Expression of a transcript containing the *CLPG* mutation. RNA from fetal longissimus muscle was reverse transcribed with primer 21911 (primer sequence in Fig. 4) (lane 1) or 22051 5'-GCAAGGGTCTGTTGGTCCTAA - 3' (lane 2). Resulting cDNA was amplified with primer 21911 and a nested reverse primer, 22052 5'-GCTGGAGACGTGCAGCTCTAA - 3'. Control PCR with these primers utilized RNA from a mock reverse transcription to rule out DNA contamination (lane 3), no template negative control (lane 4), or ovine genomic DNA (lane 5).

imprinted; however, no polarity shift has been documented among the transcripts evaluated in sheep for different *CLPG* genotypes (Charlier et al. 2001a).

The degree of conservation of the sequence adjacent to the *CLPG* mutation across species indicates that this region has an important biological function. Sequence motifs associated with muscle regulatory factor binding were identified in this specific region; however, the mutation did not alter in vitro binding of MyoD. Epigenetic modifications observed by differentially methylated CpG sites are present in this region of the genome, but once again do not appear to be altered by *CLPG* genotypic status. Evidence has been generated, however, that demonstrated the region is expressed as an RNA transcript (*CLPG1*) in sheep muscle tissue. The 547-bp transcript identified in sheep contains an ORF predicting 123 amino acids in which the *CLPG* mutation would alter a serine

codon to a proline, but this ORF is not conserved in human and mouse genomic sequence, and the likelihood that it produces the corresponding peptide is unknown. Moreover, the conservation of sequence between species, outside of the 144-bp region shown in Figure 4, is substantially lower. Current work is aimed at determining the full length of this novel *CLPG1* transcript and establishing its functional role.

Retarded growth development and accelerated adiposity were recently observed in a knockout mouse for the *DLK1* gene (Moon et al. 2002). This evidence would be consistent with a lean muscular phenotype in response to the constitutive overexpression of *DLK1* for sheep with the *CLPG* muscle hypertrophy phenotype as observed by Charlier et al. (2001a). It is possible that the identified mutation within this new transcript could alter its function as an RNA effector molecule to regulate gene expression of *DLK1* differently in animals heterozygous for the mutation on the paternal allele.

Associations of phenotypes with specific genes, and the subsequent identification of the causal variation, have previously relied upon the presence of known gene(s) in the region linked with nearby genetic markers. This facilitates interrogation of the sequence of coding regions of positional candidate genes to identify causative mutations (e.g., Kambadur et al. 1997; Cockett et al. 1999; Galloway et al. 2000; and Mulsant et al. 2001). To our knowledge, this is the first time that a novel transcript has been identified in livestock subsequent to discovery of a causal mutation associated with a phenotype. The discovery of this mutation and a new transcript encompassing the mutation will focus new investigations on both genetic and epigenetic aspects of this important genomic region.

METHODS

Bovine BAC Clones

Genomic sequence for this area of the sheep genome was unavailable at the start of this project, and sheep BAC clones containing the region had not been identified.

Two bovine BAC clones (486B7 and 540H9) were isolated from the RPCI-42 library (Warren et al. 2000) and were positive for both *DLK1* and *MEG3* genes. To generate initial genomic sequence for primer design, a total of 5 μ g of DNA from a pool of these two BAC clones was partially digested (18 min at 37°C) with 0.5 U of the enzyme *Cvi*I. The nearly random distribution of fragments was separated on a 1% agarose gel, and the fraction between 1000 and 1200 bp was isolated using a commercial kit (Novagen). Size-selected fractions were cloned into dephosphorylated pBLUESCRIPT vector (Stratagene) prepared by *Eco*RV digestion. Eight 384-well plates of genomic subclones were picked and sequenced as described (Smith et al. 2000). Chromatograms were exported into the MARC relational database, bases called with Phred (Ewing and Green 1998; Ewing et al. 1998), and sequences assembled into contigs with Phrap (P. Green, unpubl.). Bovine contig consensus sequences were tentatively ordered relative to matching human genomic sequence obtained from two BAC clones AL132711 and AL117190 using pairwise BLAST (Tatusova and Madden 1999). Public release of the sheep genomic sequence (AF354168) of this region during the project redirected our primer design efforts to the ovine-specific sequence data.

Primer Design

Amplification primers were designed using Primer3 (Rozen and Skaletsky 2000) from either the available bovine or ovine genomic sequence data. Amplicons were designed as overlap-

ping genomic segments of approximately 1000 bp each spanning 220,000 bp of the sheep genomic region from the published sequence (AF354168). Primers were ordered from a commercial vendor (Integrated DNA Technologies). Primer sequences that generated data during this project are available from the GenBank dbSTS accessions (see below).

SNP Detection

Sequencing of PCR products from sheep genomic DNA was conducted and analyzed as described (Fahrenkrug et al. 2001) using Phred, Phrap, Polyphred, and Consed software (Ewing et al. 1998; Ewing and Green 1998; Nickerson et al. 1997; Gordon et al. 1998; P. Green, unpubl.). Position and composition of each accepted polymorphism, animal genotypes, and contig sequences were parsed to the MARC database. Consensus sequences with denoted SNP positions contained within as IUB codes were submitted to dbSTS in GenBank (Accession numbers: G74891 to G75331).

SNP Discovery Panel

A panel of twelve sheep was utilized to identify SNPs by sequencing. This panel contained six Dorset rams (198812900, 199012500, 199112900, 199212042, 199212092, and 199212900). All of these animals are heterozygous for *CLPG*, tracing back to the presumed progenitor animal (Solid Gold) within three generations. Two Romanov ewes (199214022, 199214305) which do not contain the mutated allele, two heterozygous F1 Dorset × Romanov rams (199360105, 199360365), and two rams homozygous for the mutated allele comprised the rest of the panel. All individuals in the panel were progeny-tested for *CLPG* genotypic status. The two rams homozygous for *CLPG* (200023844, 200023886) are members of a separate composite population created by introgressing and fixing the mutated allele from Dorset rams by traditional backcrossing into a different genetic background. The key individual in our panel was a Dorset ram (198812900) chosen as the primary screen for the causative *CLPG* polymorphism. He was chosen because of the high degree of homozygosity for genetic markers from the telomeric one-third of the linkage group, and the pedigree information which indicated an inbreeding path to the sire (S318167) of Solid Gold (S354432) (Fig. 2). S318167 is both the paternal and maternal great grandsire of 198812900. This inbred individual (198812900) is identical-by-descent for the telomeric one-third of ovine chromosome 18 with the exception of the specific *CLPG* mutation that likely occurred on the sperm cell that produced Solid Gold. These characteristics make 198812900 the ideal screen for the causative polymorphism. Alternatively, sequencing of Solid Gold and his parents would also have revealed the mutation. Genomic DNA from the parents of Solid Gold is not available.

Sheep Diversity Panel (MARC SheepDP v1.1)

To evaluate the frequency of the candidate polymorphism, a panel of sheep breeds was developed. Ninety DNA samples were collected from nine genetically diverse breeds of sheep. Ten rams each, with no rams produced by a common sire, were sampled from the following breeds: Composite III (Leymaster 1991), Dorper, Dorset, Finnsheep, Katahdin, Suffolk, Texel, Rambouillet, and Romanov. These breeds represent wide ranges of performance for numerous economically important traits and all functions in crossbreeding systems. They represent a wide segment of the commercial sheep populations used in the U.S. The objective of using this panel was to evaluate the frequency of alleles for the polymorphism that passed the initial screen in the discovery panel.

SNP Genotyping

Assays for automated genotype scoring by matrix-assisted laser desorption-ionization time-of-flight mass spectrometry (MALDI-TOF MS) were developed based on the Sequenom (Sequenom) genotyping technology. The MALDI-TOF MS system uses primer oligonucleotide base extension, nanoliter dispensing of extension products onto silicon chips (Little et al. 1997), and fully automated mass spectrometric analysis. Individual genotyping assays constructed are presented in Table 2. All assays were designed as a three-primer PCR amplicon with one of the gene-specific primers containing a universal tail primer sequence at the 5' end to allow incorporation of a biotin-labeled universal primer as described in Stone et al. (2002).

Genotypes were captured at SNP marker loci for two groups of animals. A set of animals from a study designed to evaluate all 16 mating combinations at *CLPG* (K. Leymaster, unpubl.) was genotyped to evaluate two additional animals with definitive phenotypic carcass data and recombinant marker genotypes within the candidate interval. The second set of animals was the diverse breed panel described above (MARC SheepDP v1.1).

Linkage Analysis

Marker genotypes from the MALDI-TOF assays were put into a relational database (Keele et al. 1994). Genotypic data from the resource population were used to construct a linkage map of the region as described by Kappes et al. (1997) with CriMap version 2.4 (Green et al. 1990). The CHROMPIC option was used to evaluate location of phase changes of the recombinant animals in our panel given the known physical marker orders.

Methylation Analysis

Bisulphite treatment of genomic DNA was performed based on an adapted protocol from Grunau et al. (2001). Briefly, one µg of genomic DNA was denatured with 3M NaOH for 20 min at 42°C, followed by deamination in saturated sodium bisulphite/10mM hydroquinone solution, pH 5.0 for 4 h at 55°C. The DNA was desalted using the Wizard DNA Clean-up System (Promega), then desulfonated in 3M NaOH (20 min at 37°C) and ethanol precipitated. The samples were resuspended in 20 µL Tris-Cl, pH 8.0 and stored at 4°C. One µL of the bisulphite-treated DNA was used as template for PCR amplification. Amplification products were purified from agarose gels using GenElute spin columns (Sigma) and cloned into a pGEM T-Easy vector (Promega); individual clones were sequenced using radiolabeled terminator cycle sequencing (USB).

MyoD Binding Assay

Mouse MyoD and E47 proteins were synthesized in a single reaction in vitro using TNT Quick coupled rabbit reticulocyte lysate reagents (Promega). Substrate DNAs were 1 µg of pcDNA3-E47 and pcDNA3-E47 cDNA plasmids (Lemerrier et al. 1998; generous gifts from Dr. S. Konieczny, Purdue University). Parallel reactions containing ³⁵S-methionine (Amersham Pharmacia) were performed, and the radiolabeled proteins were analyzed by fluorography as previously described (Sloop et al. 2000; data not shown).

Electrophoretic mobility shift assays (EMSA) were performed as described (Sloop et al. 2000) using equivalent amounts of in vitro translated MyoD/E47. Negative control reactions contained either unprogrammed lysate or no protein. ³²P-labeled DNAs representing the SNP region were generated from the following oligonucleotides: *CLPG* site, 5' GG-GAAAGGATCTGACAGGTGGCCCCAGCCCTCGG-3', and normal site, 5' GGGAAAGGATCTGACAGGTGGTCCAGC-

CCTCGG-3'. The appropriate complementary sequences were used to generate the double-stranded targets.

RT-PCR and Northern Analysis

The highly conserved portion of the sheep genomic sequence surrounding the causative mutation was used to design primers 21911 and 21912 (Fig. 4) to amplify a 115-bp product from genomic DNA. Random hexamers, primer 21911, or primer 22051 (Fig. 5B) were used to prime cDNA synthesis from 1 µg of total RNA purified from sheep fetal longissimus muscle of all four *CLPG* genotypes (NN, CC, NC, and CN). Reverse transcription was performed with Avian Moloney Virus reverse transcriptase as recommended by the manufacturer (Invitrogen), in 25 µL total reaction volume. The cDNA product (1 or 5 µL) was used as template for PCR using the 21911–21912 or 21911–22051 primer pairs, in 10 µL total reaction volume. The 5'RACE and 3'RACE reactions were performed using a GeneRacer™ kit (Invitrogen) as recommended by the manufacturer. Primer 21911 was used to prime cDNA synthesis for 5'RACE, followed by amplification employing 21911 – "5'RACE" primers in 10 µL reaction volume. One µL of this PCR product was used as template for a second round of amplification with a nested primer 22055 (5'-GGCTGGGGC-CACCTGTCAGAT-3') and the "5'RACE nested" primer. The amplification product from this reaction was separated on agarose gel, eluted from the gel, and cloned using a TOPO TA™ kit (Invitrogen) prior to sequencing.

Standard Northern blot analysis was performed using 10 or 30 µg of total RNA separated on 1% agarose containing formaldehyde as described (Sambrook et al. 1989). RNA was transferred to Zetaprobe membrane (BioRad) via capillary transfer. Probe was prepared using a commercial kit (Superscript kit; Invitrogen) from either full-length bovine GAPDH or a clone containing the RT-PCR product from the 21911–22051 primer pair. Blots were exposed to a phosphorimaging screen for 24–72 h before images were collected.

ACKNOWLEDGMENTS

We acknowledge the excellent technical support of R. Godtel for primer design, sequencing, and SNP identification. We also thank L. Flathman, T. Happold, B. Lee, S. Simcox, and K. Tennill for sequence and genotype data acquisition. We thank Dr. S. Konieczny (Purdue University) for reagents. Supported in part by a grant to S.J.R. from the USDA/NRICGP/CSREES. This study was partly supported by the NIH grants CA25951 and ES08823 to R.L.J. Further information on genomic imprinting is available at <http://www.geneimprint.com>.

The publication costs of this article were defrayed in part by payment of page charges. This article must therefore be hereby marked "advertisement" in accordance with 18 USC section 1734 solely to indicate this fact.

REFERENCES

- Berghmans, S., Segers, K., Shay, T., Georges, M., Cockett, N., and Charlier, C. 2001. Breakpoint mapping positions the callipyge gene within a 450-kilobase chromosome segment containing the *DLK1* and *GTL2* genes. *Mamm. Genome* **12**: 183–185.
- Bidwell, C.A., Shay, T.L., Georges, M., Beever, J.E., Berghmans, S., and Cockett, N.E. 2001. Differential expression of the *GTL2* gene within the callipyge region of ovine chromosome 18. *Anim. Genet.* **32**: 248–256.
- Charlier, C., Segers, K., Karim, L., Shay, T., Gyapay, G., Cockett, N., and Georges, M. 2001a. The callipyge mutation enhances the expression of coregulated imprinted genes in *cis* without affecting their imprinting status. *Nat. Genet.* **27**: 367–369.
- Charlier, C., Segers, K., Wagenaar, D., Karim, L., Berghmans, S., Jaillon, O., Shay, T., Weissenbach, J., Cockett, N., Gyapay, G., et al. 2001b. Human-ovine comparative sequencing of a 250-kb imprinted domain encompassing the Callipyge (*CLPG*) locus and identification of six imprinted transcripts: *DLK1*, *DAT*, *GTL2*, *PEG11*, *antiPEG11*, and *MEG8*. *Genome Res.* **11**: 850–862.
- Cockett, N.E., Jackson, S.P., Shay, T.L., Nielsen, D.M., Moore, S.S., Steele, M.R., Barendse, W., Green, R.D., and Georges, M. 1994. Chromosomal localization of the callipyge gene in sheep (*Ovis aries*) using bovine DNA markers. *Proc. Natl. Acad. Sci.* **91**: 3019–3023.
- Cockett, N.E., Jackson, S.P., Shay, T.L., Farnir, F., Berghmans, S., Snowden, G.D., Nielsen, D.M., and Georges, M. 1996. Polar overdominance at the ovine callipyge locus. *Science* **273**: 236–238.
- Cockett, N.E., Shay, T.L., Beever, J.E., Nielsen, D., Albrechtsen, J., Georges, M., Peterson, K., Stephens, A., Vernon, W., Timofeevskaya, O., et al. 1999. Localization of the locus causing Spider Lamb Syndrome to the distal end of ovine Chromosome 6. *Mamm. Genome* **10**: 35–38.
- Ewing, B. and Green, P. 1998. Base-calling of automated sequencer traces using phred. II. Error probabilities. *Genome Res.* **8**: 186–194.
- Ewing, B., Hillier, L., Wendl, M.C., and Green, P. 1998. Base-calling of automated sequencer traces using phred. I. Accuracy assessment. *Genome Res.* **8**: 175–185.
- Fahrenkrug, S.C., Freking, B.A., Rexrood, C.E. III, Leymaster, K.A., Kappes, S.M., and Smith, T.P.L. 2000. Comparative mapping of the ovine *CLPG* locus. *Mamm. Genome* **11**: 871–876.
- Fahrenkrug, S.C., Freking, B.A., Smith, T.P.L., Rohrer, G.A., and Keele, J.W. 2002. Single nucleotide polymorphism (SNP) discovery in porcine expressed genes. *Anim. Genet.* **33**: 186–195.
- Freking, B.A., Keele, J.W., Beattie, C.W., Kappes, S.M., Smith, T.P.L., Sonstegard, T.S., Nielsen, M.K., and Leymaster, K.A. 1998a. Evaluation of the ovine callipyge locus: I. Relative chromosomal position and gene action. *J. Anim. Sci.* **76**: 2062–2071.
- Freking, B.A., Keele, J.W., Nielsen, M.K., and Leymaster, K.A. 1998b. Evaluation of the ovine callipyge locus: II. Genotypic effects on growth, slaughter, and carcass traits. *J. Anim. Sci.* **76**: 2549–2559.
- Freking, B.A., Keele, J.W., Shackelford, S.D., Wheeler, T.L., Koohmaraie, M., Nielsen, M.K., and Leymaster, K.A. 1999. Evaluation of the ovine callipyge locus: III. Genotypic effects on meat quality. *J. Anim. Sci.* **77**: 2336–2344.
- Galloway, S.M., McNatty, K.P., Cambridge, L.M., Laitinen, M.P., Juengel, J.L., Jokiranta, T.S., McLaren, R.J., Luiro, K., Dodds, K.G., Montgomery, G.W., et al. 2000. Mutations in an oocyte-derived growth factor gene (*BMP15*) cause increased ovulation rate and infertility in a dosage-sensitive manner. *Nat. Genet.* **25**: 279–283.
- Gordon, D., Abajian, C., and Green, P. 1998. CONSED: A graphical tool for sequence finishing. *Genome Res.* **8**: 195–202.
- Green, P.K., Falls, K., and Crooks, S. 1990. Documentation for CRI-MAP, version 2.4. Washington University School of Medicine, St. Louis, MO.
- Grunau, C., Clark, S.J., and Rosenthal, A. 2001. Bisulfite genomic sequencing: Systematic investigation of critical experimental parameters. *Nucleic Acids Res.* **29**: e65.
- Heaton, M.P., Harhay, G.P., Bennett, G.L., Stone, R.T., Grosse, W.M., Casas, E., Keele, J.W., Smith, T.P.L., Chitko-McKown, C.G., and Laegreid, W.W. 2002. Selection and use of SNP markers for animal identification and paternity analysis in U.S. beef cattle. *Mamm. Genome* **13**: 272–281.
- Jackson, S.P. and Green, R.D. 1993. Muscle trait inheritance, growth performance and feed efficiency of sheep exhibiting a muscle hypertrophy phenotype. *J. Anim. Sci.* **71**: 241 (Abstr).
- Kambadur, R., Sharma, M., Smith T.P., and Bass, J.J. 1997. Mutations in myostatin (*GDF8*) in double muscled Belgian Blue and Piedmontese cattle. *Genome Res.* **7**: 910–916.
- Kappes, S.M., Keele, J.W., Stone, R.T., McGraw, R.A., Sonstegard, T.S., Smith, T.P.L., Lopez-Corrales, and Beattie, C.W. 1997. A second generation linkage map of the bovine genome. *Genome Res.* **7**: 235–249.
- Keele, J.W., Wray, J.E., Behrens, D.W., Rohrer, G.A., Sundén, S.L., Kappes, S.M., Bishop, M.D., Stone, R.T., Alexander, L.J., et al. 1994. A conceptual database model for genomic research. *J. Comput. Biol.* **1**: 65–76.
- Koohmaraie, M.K., Shackelford, S.D., Wheeler, T.L., Lonergan, S.M., and Doumit, M.E. 1995. A muscle hypertrophy condition in lamb (*callipyge*): Characterization of effects on muscle growth and meat quality traits. *J. Anim. Sci.* **73**: 3596–3607.
- Lemerrier, C., To, R.Q., Carrasco, R.A., and Konieczny, S.F. 1998. The basic helix-loop-helix transcription factor *Mist1* functions as a transcriptional repressor of *myoD*. *EMBO J.* **17**: 1412–1422.
- Leymaster, K.A. 1991. Straightbred comparison of a composite population and the Suffolk breed for performance traits of sheep. *J. Anim. Sci.* **69**: 993–999.

- Little, D.P., Cornish, T.J., O'Donnell, M.J., Braun, A., and Cotter, R.J. 1997. MALDI on a chip: Analysis of arrays of low femtomole to subfemtomole quantities of synthetic oligonucleotides and DNA diagnostic products dispensed by a piezoelectric pipette. *Anal. Chem.* **69**: 4540–4546.
- Moon, Y.S., Smas, C.M., Lee, K., Villena, J.A., Kim, K.H., Yun, E.J., and Sul, H.S. 2002. Mice lacking paternally expressed *Pref-1/Dlk1* display growth retardation and accelerated adiposity. *Mol. Cell. Biol.* **22**: 5585–5592.
- Mulsant, P., Lecerf, F., Fabre, S., Schibler, L., Monget, P., Lanneluc, I., Pisselet, C., Riquet, J., Monniaux, D., Callebaut, I., et al. 2001. Mutation in bone morphogenetic protein receptor-1B is associated with increased ovulation rate in Booroola Merino ewes. *Proc. Natl. Acad. Sci.* **98**: 5104–5109.
- Nickerson, D.A., Tobe, V.O., and Taylor, S.L. 1997. POLYPHRED: Automating the detection and genotyping of single nucleotide substitutions using fluorescence-based resequencing. *Nucleic Acids Res.* **25**: 2745–2751.
- Rozen, S. and Skaletsky, H. 2000. Primer3 on the WWW for general users and for biologist programmers. *Meth. Mol. Biol.* **132**: 365–386.
- Sambrook, J., Fritsch, E.F., and Maniatis, T. 1989. *Molecular cloning: A laboratory manual*, 2nd ed., pp. 7.43–7.45. Cold Spring Harbor Laboratory, Cold Spring Harbor, NY.
- Schmidt, J.V., Matteson, P.G., Jones, B.K., Guan, X.J., and Tilghman, S.M. 2000. The *DLK1* and *Gtl2* genes are linked and reciprocally imprinted. *Genes & Dev.* **14**: 1997–2002.
- Sloop, K.W., McCutchan-Schiller, A., Blanton Jr., J.R., Meier, B.C., Rohrer, G., Smith, T.P.L., and Rhodes, S.J. 2000. Biochemical and genetic characterization of the porcine Prophet of Pit-1 pituitary transcription factor. *Mol. Cell. Endocrinol.* **168**: 77–87.
- Smith, T.P.L., Godtel, R.A., and Lee, R.T. 2000. PCR-based setup for high-throughput cDNA library sequencing on the ABI 3700 automated DNA sequencer. *Biotechniques* **29**: 698–700.
- Stone, R.T., Gross, M.W., Casas, E., Smith, T.P.L., Keele, J.W., and Bennett, G.L. 2002. Use of bovine EST data and human genomic sequences to map 100 gene-specific bovine markers. *Mamm. Genome* **13**: 211–215.
- Takada, S., Tevendale, M., Baker, J., Georgiades, P., Campbell, E., Freeman, T., Johnson, M.H., Paulsen, M., and Ferguson-Smith, A.C. 2000. Delta-like and gtl2 are reciprocally expressed, differentially methylated linked imprinted genes on mouse chromosome 12. *Curr. Biol.* **10**: 1135–1138.
- Tatusova, T.A. and Madden, T.L. 1999. Blast 2 sequences—A new tool for comparing protein and nucleotide sequences. *FEMS Microbiol. Lett.* **174**: 247–250.
- Warren, W., Smith, T.P.L., Rexroad, C.E. III, Fahrenkrug, S.C., Allison, T., Shu, C.L., Catanese, J., and de Jong, P.J. 2000. Construction and characterization of a new bovine bacterial artificial chromosome library with 10 genome-equivalent coverage. *Mamm. Genome* **11**: 662–663.
- Wylie, A.A., Murphy, S.K., Orton, T.C., and Jirtle, R.L. 2000. Novel imprinted *DLK1/GTL2* domain on human chromosome 14 contains motifs that mimic those implicated in *IGF2/H19* regulation. *Genome Res.* **10**: 1711–1718.

WEB SITE REFERENCES

www.ncbi.nlm.nih.gov/cgi-bin/Entrez/hum_srch; Mapviewer tool at the National Center for Biological Information
www.cbil.upenn.edu; Transcription Element Search System

Received July 15, 2002; accepted in revised form July 31, 2002.



Identification of the Single Base Change Causing the Callipyge Muscle Hypertrophy Phenotype, the Only Known Example of Polar Overdominance in Mammals

Brad A. Freking, Susan K. Murphy, Andrew A. Wylie, et al.

Genome Res. 2002 12: 1496-1506

Access the most recent version at doi:[10.1101/gr.571002](https://doi.org/10.1101/gr.571002)

References

This article cites 37 articles, 12 of which can be accessed free at:
<http://genome.cshlp.org/content/12/10/1496.full.html#ref-list-1>

License

Email Alerting Service

Receive free email alerts when new articles cite this article - sign up in the box at the top right corner of the article or [click here](#).



To subscribe to *Genome Research* go to:
<https://genome.cshlp.org/subscriptions>
