

# Transcription from an upstream promoter controls methylation signaling from an inverted repeat of endogenous genes in *Arabidopsis*

Stacey Melquist<sup>1</sup> and Judith Bender<sup>2</sup>

Department of Biochemistry and Molecular Biology, Johns Hopkins University Bloomberg School of Public Health, Baltimore, Maryland 21205, USA

In plants, replication of RNA viruses and RNA from highly transcribed transgenes can trigger DNA methylation. These systems accumulate diced small RNA (smRNA) products of double-stranded RNA (dsRNA) precursors, but it is not known which RNA species directs methylation. The methylated *PAI* tryptophan biosynthetic genes in *Arabidopsis* allow the study of methylation signals for endogenous genes with lower expression levels. The *PAI* genes are arranged as a tandem inverted repeat plus two singlet genes at unlinked loci. Here we show that the predominant *PAI* transcript initiates at a novel unmethylated promoter that lies upstream of one of the inverted repeat *PAI* genes. Suppressed transcription from the upstream promoter using transgene-directed silencing reduces methylation on the singlet *PAI* genes, but not on the inverted repeat, consistent with an RNA methylation signal. RNA gel blots detect normal *PAI* transcripts and dsRNA read-through species, but not diced smRNAs, suggesting that either precursor dsRNAs or subdetectable levels of smRNAs, below the threshold to effectively degrade *PAI* transcripts, serve as the *PAI* methylation signal. Thus, the lower expression endogenous gene system allows dissection of a RNA-directed methylation pathway distinct from RNA degradation pathways.

[**Keywords:** Cytosine methylation; RNA-directed DNA methylation; RNA silencing; small RNAs; dicer]

Received February 7, 2003; revised version accepted June 19, 2003.

Genomic cytosine methylation in eukaryotes is important for control of gene expression and genome stability (for reviews, see Martienssen and Colot 2001; Bird 2002). Methylated genomic regions are typically assembled into a compacted chromatin structure that is refractory to transcription and recombination. In mammals, methylation is critical for developmental processes including genomic imprinting and X chromosome inactivation. In both mammals and plants, methylation also provides a genome defense against invasive parasitic sequences. For example, transposable element sequences in mammalian and plant genomes are often methylated (Yoder et al. 1997; Finnegan et al. 1998). In plants, loss of transposon methylation has been shown to result in activation of transposon movement with occasionally mutagenic consequences (Miura et al. 2001; Singer et al. 2001; Kato et al. 2003).

A key question is what signals direct methylation to

particular genomic sequences. In both mammals and plants, tandem repeated arrays such as centromere-associated repeats or repetitive transgene insertion arrays are usually methylated (Assaad et al. 1993; Yoder et al. 1997; Finnegan et al. 1998; Garrick et al. 1998). This observation has led to the hypothesis that repeated arrays might have intrinsic structural features that make them good substrates for methylation (Assaad et al. 1993; Henikoff 1998). Additionally in plants, a growing body of evidence suggests that some types of aberrant RNAs can stimulate methylation of genomic DNA with which they share sequence identity. The original observation of RNA-directed DNA methylation came from studies with tobacco carrying replication-proficient versus replication-defective RNA viroid-encoding sequences on a genomic transgene insertion (Wassenegger et al. 1994). More recently, RNA-directed DNA methylation has been demonstrated in a number of plant systems that express high levels of RNA, including RNA virus infections and viral promoter-driven transgenes (Jones et al. 1998, 1999; Mette et al. 1999, 2000; Dalmay et al. 2000a,b; Mourrain et al. 2000; Sijen et al. 2001; Wang et al. 2001).

In both plants and animals, double-stranded RNAs (dsRNAs) have been shown to trigger an RNA-based de-

<sup>1</sup>Present address: Mayo Clinic, 4500 San Pablo Rd., Jacksonville, FL 32224, USA.

<sup>2</sup>Corresponding author.

E-MAIL [jbender@mail.jhmi.edu](mailto:jbender@mail.jhmi.edu); FAX (410) 955-2926.

Article published online ahead of print. Article and publication date are at <http://www.genesdev.org/cgi/doi/10.1101/gad.1081603>.

fense response called RNA interference or RNA silencing (Matzke et al. 2001). In this process, the dsRNA is processed into small RNAs (smRNAs) of 21–25 nucleotides (nt) in length by a dicer RNase. The smRNAs then guide degradation of any RNA species with which they share sequence complementarity. The RNA silencing process thus serves as a defense against RNA virus infections, which typically involve dsRNA replication intermediates. In plants, RNA silencing is also often associated with DNA methylation of the affected sequences, suggesting that these two silencing responses are mechanistically interrelated, with the DNA methylation perhaps providing an extra layer of protection against any viral sequences that make their way into the plant genome by reverse transcription and integration (Bender 2001). Evidence in support of a common mechanism came from genetic studies in *Arabidopsis* that screened for suppressors of RNA silencing of reporter transgenes (Dalmay et al. 2000b, 2001; Mourrain et al. 2000). The RNA silencing-defective mutations recovered proved to also abolish transgene DNA methylation. However, these mutations are thought to block the conversion of aberrant RNA precursors into dsRNA substrates for dicing (Dalmay et al. 2000b, 2001; Béclin et al. 2002); thus, it remains unknown which downstream RNA species—dsRNA or smRNA—mediates DNA methylation in these systems.

Duplicated tryptophan biosynthetic genes in *Arabidopsis* that encode the enzyme phosphoribosylanthranilate isomerase (PAI) serve as a model system to study methylation signaling for endogenous genes in plants. *Arabidopsis* strains vary in *PAI* gene arrangements and methylation status (Bender and Fink 1995; Luff et al. 1999; Melquist et al. 1999). In the Columbia (Col) strain, there are three *PAI* genes (*PAI1*, *PAI2*, and *PAI3*) at three unlinked loci in the genome, and these genes are not methylated. In the Wassilewskija (WS) strain, there is a tail-to-tail inverted repeat of two genes *PAI1–PAI4* at the *PAI1* locus, as well as the unlinked *PAI2* and *PAI3* genes; all four genes are densely methylated across their regions of shared sequence identity, which extends for several hundred base pairs upstream and downstream of the protein-coding region. In both WS and Col, only *PAI1* and *PAI2* encode functional PAI enzyme (Melquist et al. 1999). We previously determined that the WS *PAI1–PAI4* inverted repeat locus provides the trigger for *PAI* gene-directed methylation because when this repeat is combined in a genome with unmethylated Col *PAI* genes by genetic crosses, the Col *PAI* genes become methylated within a few generations of inbreeding (Luff et al. 1999). Furthermore, a survey of wild isolates of *Arabidopsis* showed that only strains with a *PAI1–PAI4* inverted repeat display *PAI* methylation (Melquist et al. 1999).

Given the precedent for dsRNA or diced smRNA species to stimulate DNA methylation in plants, an attractive hypothesis was that transcription through the *PAI1–PAI4* locus might provide the *PAI* methylation signal. In fact, in WS and other *PAI*-methylated strains, the *PAI1* gene was found to be uniquely expressed, demonstrating

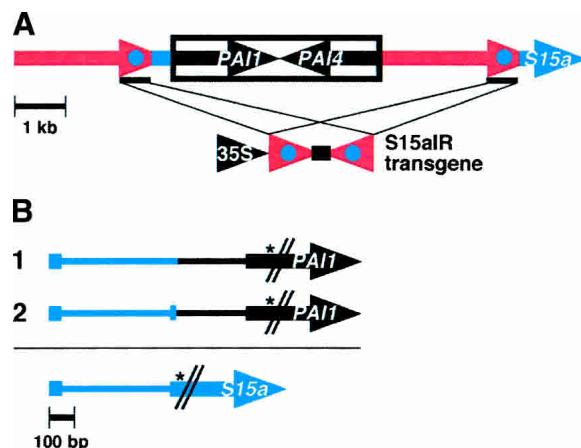
that this locus is indeed transcribed despite dense methylation (Melquist et al. 1999). Here we show that the WS *PAI1* gene is actually transcribed from a novel upstream promoter that lies beyond the methylated region. Suppression of transcription from this promoter reduces methylation on the singlet *PAI2* and *PAI3* genes, consistent with an RNA-based methylation signal. These results show that even relatively low-level transcription from an endogenous promoter through an inverted repeat sequence is sufficient to provide a potent DNA methylation signal. RNA gel blot analysis reveals detectable steady-state levels of normal *PAI1* transcripts and dsRNA read-through species, but not *PAI* smRNAs, suggesting that *PAI* methylation is triggered either by unprocessed precursor dsRNAs, or by low levels of smRNAs, below a threshold to effectively trigger *PAI* transcript degradation. Mutations in known aberrant RNA processing factors have no effect on *PAI* methylation, consistent with the direct production of dsRNA by read-through transcription of the *PAI1–PAI4* locus. Furthermore, mutation of the *DCL1* dicer gene, which has been shown to control processing of developmental micro-RNAs but not small RNAs associated with RNA silencing (Finnegan et al. 2003), has no effect on *PAI* methylation. Thus, if small RNAs trigger *PAI* DNA methylation, they are likely to be made by the same dicer(s) necessary for RNA silencing.

## Results

### *The WS PAI1–PAI4 methylated inverted repeat is transcribed from an upstream unmethylated promoter*

In the WS strain of *Arabidopsis*, the four *PAI* genes are densely methylated across the region of *PAI* sequence identity (Luff et al. 1999), which extends from ~350 bp upstream of the translational start codon to downstream of the translational stop codon for each gene (Melquist et al. 1999). The flanking sequences unique to each gene are unmethylated. In particular, the *PAI1–PAI4* inverted repeat is flanked by 2.9 kb of nearly perfect unmethylated direct repeat sequences (Melquist et al. 1999). The direct repeat proximal to *PAI1* carries the promoter and first exon of a ribosomal protein-encoding gene *S15a* oriented to be transcribed in the same direction as *PAI1*; the direct repeat proximal to *PAI4* carries the same *S15a* promoter/first exon sequence fused to the rest of the *S15a* gene (Fig. 1A). Based on eight *S15a* cDNA sequences available in the database, the *S15a* gene contains a short first exon of 39–66 bp of untranslated sequences, followed by a large intron, followed by the second exon which contains the translational start codon for the gene (Fig. 1B).

In previous studies, we showed that the *PAI1* gene in the inverted repeat is the sole expressed *PAI* gene in WS (Melquist et al. 1999). An attractive hypothesis to explain this result was that *cis*-acting sequences unique to *PAI1*—specifically the nearby unmethylated *S15a* promoter—might control *PAI1* expression. In fact, our previous analysis of *PAI* cDNAs isolated by hybridization



**Figure 1.** Genome and transcript structure for the WS *PAI1-PAI4* locus. (A) An overview of the genome structure at the WS *PAI1-PAI4* locus is shown, with black arrows indicating the *PAI* genes including noncoding *PAI*-identical sequences; red arrows indicate the flanking 2.9-kb direct repeats, a blue arrow indicates the *S15a* gene, and blue dots represent the *S15a* promoter region. The box around the *PAI* sequences indicates the region of dense DNA methylation. Below this diagram, the structure of the *S15aR* transgene construct is shown, with lines indicating the endogenous genomic regions that will be targeted for methylation by this construct. (B) The 5'-end transcript structures of *S15a* and *PAI1* are shown, with blue sequences representing *S15a* and black sequences representing *PAI1*. Wide lines indicate exons and thin lines indicate introns. The positions of ATG translational start codons are indicated by asterisks. Diagonal slashes indicate that the body of the gene beyond the start codon is not drawn to scale.

from a WS cDNA library identified one *PAI1* cDNA that carried 33 bp of sequence at the *S15a* transcription start site spliced to more proximal *PAI1* sequences, consistent with this hypothesis (Melquist et al. 1999). We performed 5' rapid amplification of cDNA ends (5' RACE) PCR analysis on WS RNA to determine where *PAI1* transcripts initiate (Table 1). We found two general types of 5'-end species, both of which initiated in the upstream unmethylated *S15a* sequences and both of which were spliced from the *S15a* first exon donor site to more proximal *PAI1* sequences. One species was spliced to a cryptic acceptor site that lies 96 bp upstream of the *PAI1* translational start codon. The other species was spliced to the normal *S15a* acceptor site, and then spliced again from a nearby cryptic donor site to the cryptic acceptor site at the 96-bp upstream position, resulting in an extra 26 bp exon between the *S15a* first exon and *PAI1* sequences. Therefore, in both cases, the bulk of the RNA between the *S15a* transcription start site, which lies ~500 bp upstream of the *PAI1* methylation boundary and ~850 bp upstream of the *PAI1* translational start codon, is spliced out of the processed *PAI1* transcript. These results support the hypothesis that the unmethylated *S15a* promoter drives *PAI1* expression in WS. These results also indicate that the dense methylation of the *PAI1* sequences beginning 500 bp downstream of the *S15a* tran-

scription initiation site does not impede expression of *PAI1*.

*An unmethylated PAI1 gene can be transcribed from either the upstream promoter or a more proximal promoter*

We also analyzed 5' ends of *PAI* transcripts isolated from the Col strain of *Arabidopsis*, which carries a singlet *PAI1* gene rather than the *PAI1-PAI4* inverted repeat and lacks *PAI* gene methylation (Bender and Fink 1995; Melquist et al. 1999). The sequences upstream of Col *PAI1*, including the *S15a* promoter regions, are similar to those found in WS. Therefore, analysis of *PAI* transcripts in Col allows us to understand where *PAI1* transcripts initiate when the *PAI1*-proximal upstream sequences are unmethylated.

Previous analysis of Col *PAI* cDNAs revealed that both *PAI1* and *PAI2* are expressed, with much lower expression of the divergent nonfunctional *PAI3* gene (Melquist et al. 1999). A similar result was found for *PAI* cDNA analysis in the Landsberg *erecta* strain (Ler), which, like Col, carries three unmethylated *PAI* genes. From this analysis, one Col *PAI1* cDNA initiated 101 bp

**Table 1.** 5' RACE determination of transcript starts for WS *PAI1* and Col *PAI1* and *PAI2*

Transcript	First upstream exon <sup>a</sup>	Second upstream exon <sup>a</sup>	First <i>PAI</i> exon <sup>a</sup>
WS <i>PAI1</i>	-868 to -803	-386 to -361	-96 to +10
WS <i>PAI1</i>	-868 to -803	-386 to -361	-96 to +10
WS <i>PAI1</i>	-855 to -803	-386 to -361	-96 to +10
WS <i>PAI1</i>	-851 to -803	-386 to -361	-96 to +10
WS <i>PAI1</i>	-868 to -803	NA	-96 to +10
WS <i>PAI1</i>	-863 to -803	NA	-96 to +10
WS <i>PAI1</i>	-860 to -803	NA	-96 to +10
WS <i>PAI1</i>	-860 to -803	NA	-96 to +10
Col <i>PAI1</i>	-847 to -777	-386 to -361	-96 to +10
Col <i>PAI1</i>	-845 to -777	-386 to -361	-96 to +10
Col <i>PAI1</i>	-845 to -777	-383 to -361	-96 to +10
Col <i>PAI1</i>	-842 to -777	-386 to -361	-96 to +10
Col <i>PAI1</i>	-834 to -777	-386 to -361	-96 to +10
Col <i>PAI1</i>	-834 to -777	NA	-96 to +10
Col <i>PAI1</i>	NA	NA	-117 to +10
Col <i>PAI1</i>	NA	NA	-93 to +10
Col <i>PAI2</i>	NA	NA	-133 to +10
Col <i>PAI2</i>	NA	NA	-122 to +10
Col <i>PAI2</i>	NA	NA	-117 to +10
Col <i>PAI2</i>	NA	NA	-117 to +10
Col <i>PAI2</i>	NA	NA	-117 to +10
Col <i>PAI2</i>	NA	NA	-114 to +10
Col <i>PAI2</i>	NA	NA	-108 to +10
Col <i>PAI2</i>	NA	NA	-99 to +10

<sup>a</sup>Numbering is relative to the first base of the *PAI* ATG translational start codon as +1 on genomic sequences. The WS genomic sequence (GenBank accession no. U34757) carries an extra 26 bp in the first intron region upstream of *PAI1* relative to the Col genomic sequence (GenBank accession no. AF130878). The *PAI* sequence identity/methylation boundary ends at -355 in the WS genomic sequence.

upstream of the translational start codon, and one Ler *PAI1* cDNA initiated at the *S15a* start site and was spliced directly to the cryptic acceptor site that lies 96 bp upstream of the start codon; the remaining cDNAs were truncated and uninformative. Additionally, two Col *PAI1* cDNA sequences available in the database initiated at the *S15a* promoter and were spliced to proximal *PAI* sequences. These results suggest that when the *PAI1* gene is unmethylated, transcripts can still initiate at the upstream *S15a* promoter, but that they can also initiate at a more proximal site ~100 bp upstream of the translation start site.

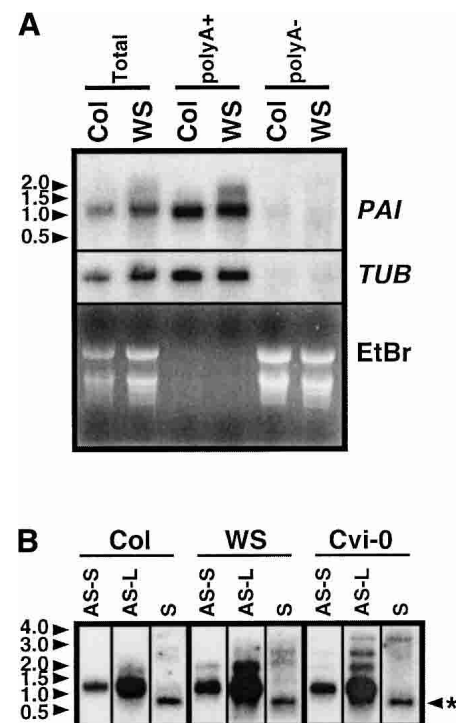
To further explore this possibility, we performed 5' RACE PCR analysis of Col *PAI* transcripts (Table 1). This analysis detected three types of *PAI1* species: both splice forms of transcripts that initiated at the *S15a* start as in WS (Fig. 1B), plus transcripts that initiated at start sites more proximal to *PAI1*, either 117 or 93 bp upstream of the translational start codon within the region of *PAI* sequence identity. These results are consistent with there being two possible transcription start regions—one at *S15a* and one in more proximal *PAI* sequences—when the *PAI1* gene is unmethylated.

Previous cDNA analysis in Col revealed *PAI2* transcripts that initiated at 102 and 106 bp upstream of the translation start codon (Melquist et al. 1999). Col *PAI* 5' RACE PCR analysis also revealed *PAI2* transcripts that initiate at proximal sites ranging from 133 to 99 bp upstream of the translation start (Table 1). These patterns, together with the patterns observed for Col *PAI1*, indicate that proximal *PAI* promoter sequences are contained in the region of *PAI* sequence identity. Thus, in WS, where the proximal promoters are methylated and silenced, only the more distal unmethylated *S15a* promoter upstream of *PAI1* is available as a transcription start site.

#### *The PAI1–PAI4 inverted repeat generates both normal PAI1 and longer 3' read-through polyadenylated transcripts*

RNA gel blot analysis of *PAI* transcripts in total RNA prepared from either WS or Col revealed a prominent band of ~1200 nt (Fig. 2A), the predicted size of the spliced *PAI1* or *PAI2* transcripts (Melquist et al. 1999). However, uniquely in WS, a heterogeneous population of higher molecular weight species was also detected, with a major band at ~1900 nt and lower levels of longer species. Both the prominent *PAI* transcript band and the longer transcripts were recovered predominantly in the polyadenylated RNA fraction.

In previous studies, we found that *Arabidopsis* strains carrying methylated *PAI1–PAI4* inverted repeats with different amounts of sequence separating the *PAI1* and *PAI4* genes displayed corresponding shifts in the size range of *PAI* higher molecular weight species detected by RNA gel blot (Melquist et al. 1999). These strains do not differ significantly from either Col or WS in their *PAI1* 5' sequences or exon/intron structures. Taken together, these observations argue in favor of the longer species



**Figure 2.** *PAI* steady-state transcript analysis. (A) Total RNA (Total) from Col or WS was separated into polyadenylated (polyA+) and nonpolyadenylated (polyA-) fractions, gel blotted, and probed with the *PAI* probe. The blot was stripped and re-probed with  $\beta$ -tubulin (*TUB*) to control for loading of polyA+ species. The ethidium bromide (EtBr) stained gel is shown to control for loading of polyA- species. Molecular weight markers in kilonucleotides are indicated in the left margin. (B) Duplicate blots of polyadenylated RNA prepared from Col, WS, or Cvi-0 electrophoresed in parallel on the same gel were hybridized with either a *PAI* antisense strand (AS) or a *PAI* sense (S) strand RNA probe. Both a short (AS-S) and a long (AS-L) exposure of the same antisense strand-probed blot are shown, in the first case to resolve the predominant lower molecular weight species, and in the second case to clearly show the less-abundant higher molecular weight species. A single exposure of the sense strand-probed blot is shown. A nonspecific band detected by the sense strand probe is marked with an asterisk in the right margin. This band serves as an internal loading control for the sense strand blot. In addition, reprobing of both blots with a *TUB* probe indicated approximately equal loading of all samples (data not shown).

detected uniquely in *PAI1–PAI4*-containing strains as corresponding to *PAI1* 3' read-through transcripts. However, we were unable to clone WS *PAI1* transcripts with unusually long 3' ends using 3' RACE analysis (Table 2), perhaps because these palindromic species can form secondary structures that inhibit reverse transcription and/or PCR amplification, or because longer species are out-competed by the more abundant shorter species in the transcript population.

To determine whether the high molecular weight *PAI* RNAs correspond to 3' read-through RNAs with palindromic *PAI4* sequences, we performed RNA gel blot analysis of polyadenylated transcripts using a *PAI* cDNA



**Table 2.** 3' RACE determination of transcript ends for WS *PAI1* and Col *PAI1* and *PAI2*

Transcript	<i>PAI</i> fifth exon <sup>a</sup>
WS <i>PAI1</i>	+1257 to +1546
WS <i>PAI1</i>	+1257 to +1613
WS <i>PAI1</i>	+1257 to +1613
WS <i>PAI1</i>	+1257 to +1613
WS <i>PAI1</i>	+1257 to +1613
WS <i>PAI1</i>	+1257 to +1613
WS <i>PAI1</i>	+1257 to +1613
Col <i>PAI1</i>	+1257 to +1613
Col <i>PAI1</i>	+1257 to +1613
Col <i>PAI1</i>	+1257 to +1613
Col <i>PAI1</i>	+1257 to +1613
Col <i>PAI1</i>	+1257 to +1616
Col <i>PAI1</i>	+1257 to +1636
Col <i>PAI1</i>	+1257 to +1694
Col <i>PAI1</i>	+1257 to +1725
Col <i>PAI2</i>	+1257 to +1604
Col <i>PAI2</i>	+1257 to +1613
Col <i>PAI2</i>	+1257 to +1613
Col <i>PAI2</i>	+1257 to +1613
Col <i>PAI2</i>	+1257 to +1616
Col <i>PAI2</i>	+1257 to +1733
Col <i>PAI2</i>	+1257 to +1745

<sup>a</sup>Numbering is relative to the first base of the *PAI* ATG translation start codon as +1 on genomic sequences. Polyadenylation occurs after the last base position given for each *PAI* fifth exon.

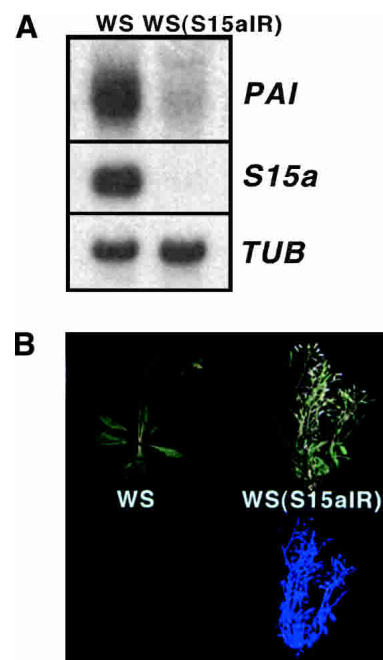
sense strand RNA probe (Fig. 2B). In this analysis, we included RNA prepared from Cvi-0, which has a *PAI1*–*PAI4* inverted repeat separated by 839 bp more central sequence than in WS (Melquist et al. 1999). The *PAI* sense strand probe detected high molecular weight species in both WS and Cvi-0, but not in Col samples, with the longest species in each case corresponding in size to the longest species detected with a *PAI* antisense strand probe. These results show that the high molecular weight RNAs that accumulate in strains carrying a *PAI1*–*PAI4* inverted repeat include transcripts that read through from *PAI1* into the palindromic *PAI4* sequences. However, the sense probe had weak or no hybridization to shorter species in WS and Cvi-0, presumably because these species do not extend far enough into palindromic *PAI4* sequences to be effectively detected. In this regard, it should be noted that the *PAI* cDNA sense strand probe will not hybridize to central material between *PAI1* and *PAI4* or to *PAI* intron sequences. The *PAI* sense strand probe cross-hybridized to an unrelated transcript of ~800 nt in all samples tested.

*The endogenous S15a promoter can be methylated and silenced by a transcribed inverted repeat of S15a sequences*

To examine the role of transcription through the WS *PAI1*–*PAI4* inverted repeat in maintaining *PAI* gene

methylation, we used a transgene-directed promoter silencing strategy (Mette et al. 2000; Sijen et al. 2001) to silence the *S15a* promoter. The basic design of this strategy is to introduce a highly transcribed inverted repeat of target promoter sequences on a transgene into the plant genome. This type of construct was shown to produce dsRNA and smRNAs corresponding to the target sequence, and to direct cytosine methylation and silencing of the target sequence. In our *S15aIR* construct, we drove expression of an inverted repeat of 430 bp upstream of and including the *S15a* transcription start site from the strong Cauliflower Mosaic Virus 35S promoter (Fig. 1A). The *S15aIR* construct was transformed into the WS genome, and lines with single-copy inserts were isolated.

The WS(*S15aIR*) transgenic strain displayed strong reduction in *PAI* steady-state transcript levels and undetectable levels of *S15a* transcripts by RNA gel blot analysis (Fig. 3A). Additionally, WS(*S15aIR*) plants displayed a number of typical *PAI*-deficient phenotypes (Bender and Fink 1995; Bartee and Bender 2001) including blue fluorescence under ultraviolet (UV) light due to accumulation of an early intermediate in the tryptophan pathway, reduced size, reduced fertility, and increased bushiness (Fig. 3B). There was no obvious consequence of reduced *S15a* transcripts, either because there is still enough residual expression of the gene to provide ribosomal protein function, and/or because the gene is redundant with three other predicted *S15a* genes elsewhere in the genome. Together, the RNA gel blot analysis and fluorescent phenotype of the WS(*S15aIR*) strain indicate that



**Figure 3.** Expression and phenotypic analysis of WS(*S15aIR*) plants. (A) Total RNA gel blot analysis of *PAI1* and *S15a* transcript levels in parental WS and WS(*S15aIR*) plants, with  $\beta$ -tubulin (*TUB*) as a loading control. (B) Visible (top) and UV (bottom) photographs of representative adult WS and WS(*S15aIR*) plants.

the *S15a* promoter is efficiently silenced by the transgene.

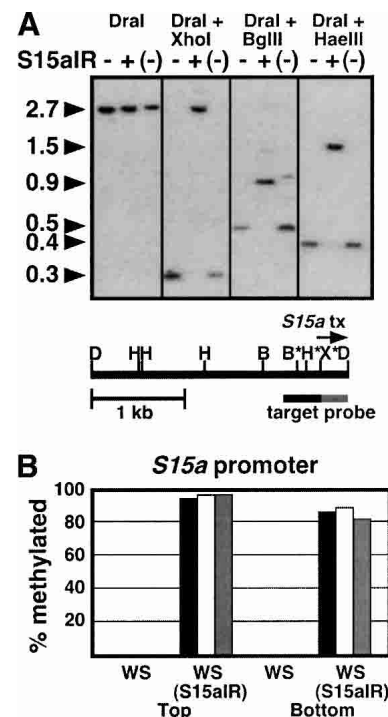
To confirm that the *S15aIR* transgene induces methylation on the target promoter sequence, as previously shown in transgene silencing systems, we assayed *S15a* methylation with two different approaches. First, we cleaved WS(*S15aIR*) genomic DNA with methylation-sensitive restriction endonucleases, and used DNA gel blot analysis with a probe specific for the endogenous *S15a* loci to detect cleavage at these target sites. This analysis showed that three different enzymes, *XhoI* (5'-CTCGAG-3'), *BglIII* (5'-AGATCT-3'), and *HaeIII* (5'-GGCC-3'), were all inhibited from cleaving WS(*S15aIR*) but not WS DNA in the target *S15a* sequences (Fig. 4A). Reprobing of the blot with a transgene-specific probe lying just downstream of the *S15aIR* construct revealed that the *S15a* sequences on the transgene were also inhibited from cleavage (data not shown). These results indicate that both the endogenous *S15a* sequences and the transgene *S15a* sequences are methylated in the WS(*S15aIR*) strain.

Second, we determined specific methylation patterns across the endogenous *S15a* promoter target region using sodium bisulfite genomic sequencing (Frommer et al. 1992). This analysis showed that the region contained almost no methylated cytosines in untransformed WS, but that it was densely methylated in the WS(*S15aIR*) strain (Fig. 4B). Methylation was found in symmetrically disposed cytosine contexts (CG and CNG) as well as in other contexts. These data are consistent with the inhibition of cleavage at restriction sites carrying cytosines in different sequence contexts (Fig. 4A).

We also investigated the consequences for *PAI1* expression and *S15a* promoter methylation when the *S15aIR* transgene was removed by genetic segregation. A segregating population generated by self-pollination of a plant that was hemizygous for the *S15aIR* transgene revealed that all of 14 progeny that segregated away from the transgene selectable marker were nonfluorescent or very weakly fluorescent. In the case of the weakly fluorescent segregants, the fluorescence did not persist in the next generation of self-pollination. These strains are termed WS(-) to indicate that they are epigenetic variants of WS. DNA prepared from a representative WS(-) segregant showed a loss of *S15a* promoter methylation via Southern blot assay (Fig. 4A). These observations indicate that the *S15aIR* construct does not leave a stable methylation imprint behind on the *S15a* promoter when it is removed by segregation.

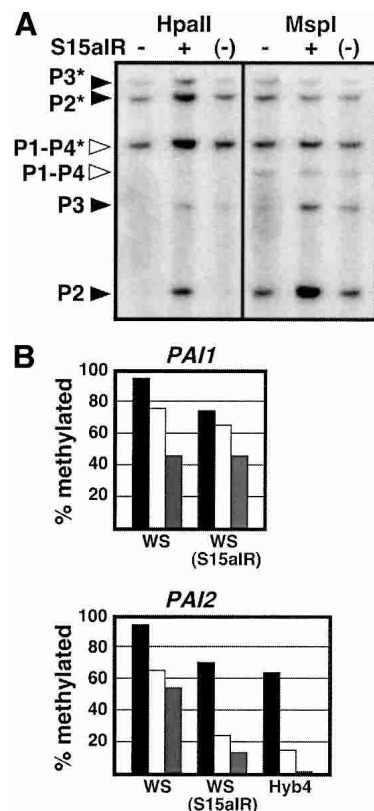
#### *Methylation of singlet PAI genes but not the PAI1-PAI4 inverted repeat is reduced in WS(S15aIR) plants*

To determine the consequences for *PAI* gene methylation when transcription through the *PAI1-PAI4* inverted repeat is suppressed by the *S15aIR* transgene, we used both Southern blot and bisulfite genomic sequencing assays for methylation. For Southern blot analysis, genomic DNA was cleaved with the isoschizomers



**Figure 4.** The targeted *S15a* promoter is methylated in WS(*S15aIR*) plants. (A) Southern blot analysis of *S15a* promoter methylation. Genomic DNA samples were prepared from WS, WS(*S15aIR*), and WS with the *S15aIR* transgene segregated away [WS(-)], shown as -, +, and (-), respectively. The restriction map of the *S15a* promoter region is shown in a diagram below the blot. The methylation-insensitive enzyme *DraI* (D) was used to release this region from flanking sequences. Cleavage within the region was then tested with the methylation-sensitive enzymes *XhoI* (X), *BglIII* (B), or *HaeIII* (H). Sites within the transgene target sequence (black bar below the restriction map, corresponding to the black bars shown in Fig. 1A) are denoted with asterisks. The flanking probe sequence unique to the endogenous target loci is shown as a gray bar. The start point and direction of the *S15a* transcript (*S15a* tx) are indicated by an arrow above the restriction map. The molecular weight of each band is shown in kilobases. (B) Genomic bisulfite methylation sequencing data for the targeted *S15a* promoter region in WS and WS(*S15aIR*). Eight independent top strand or bottom strand clones were sequenced from each sample. The percentage of 5-methyl-cytosines of total cytosines sequenced for the 430-bp region targeted by the transgene is shown, divided into the contexts CG (black), CNG (white), and other contexts (gray).

*HpaII* and *MspI* (5'-CCGG-3'), which cleave once in each *PAI* locus. *HpaII* is inhibited by methylation of either cytosine (CG or CNG) in the recognition sequence, whereas *MspI* is only inhibited by methylation of the outer (CNG) cytosine. This analysis showed that cleavage in the *PAI2* and *PAI3* genes for both enzymes was increased in WS(*S15aIR*) versus WS or WS(-), but that there was no significant effect on *PAI1-PAI4* cleavage patterns (Fig. 5A). Bisulfite genomic sequencing of the proximal promoter regions for the *PAI1* and *PAI2* genes in WS(*S15aIR*) also showed that *PAI2* methylation was reduced, with a partial reduction in CG methylation and



**Figure 5.** Methylation is reduced on singlet *PAI* genes but not on the *PAI1*–*PAI4* inverted repeat. (A) Genomic DNA samples prepared from WS, WS(S15aIR), and WS with the S15aIR transgene segregated away [WS(–)]—shown as –, +, and (–), respectively—were digested with the methylation-sensitive isoschizomers *HpaII* and *MspI* and probed with a *PAI* internal cDNA fragment. Methylated bands are denoted with asterisks. (P1–P4) *PAI1*–*PAI4*; (P2) *PAI2*; (P3) *PAI3*. The bands corresponding to the singlet genes are shown with black arrows and the bands corresponding to the inverted repeat are shown with open arrows. (B) Genomic bisulfite methylation sequencing data for *PAI1* and *PAI2* proximal promoter regions in WS(S15aIR). Eight independent top-strand clones were sequenced for *PAI1* or *PAI2*. The percentage of 5-methyl-cytosines of total cytosines sequenced within the region of *PAI* sequence identity (344 bp for *PAI1* or 338 bp for *PAI2*) is shown, divided into the contexts CG (black), CNG (white), and other contexts (gray). For comparison, previously determined wild-type WS *PAI1* and *PAI2* data and *PAI2* data from Hyb4—a Col/WS hybrid with Col *PAI1* and WS *PAI2*—are shown (Luff et al. 1999).

a stronger reduction in non-CG methylation (Fig. 5B). This *PAI2* methylation profile resembles that previously determined in the “Hyb4” strain, a hybrid from a cross of WS and Col that retains the WS *PAI2* and *PAI3* genes but which has replaced the WS *PAI1*–*PAI4* locus with the Col singlet *PAI1* gene (Fig. 5B; Luff et al. 1999). Bisulfite genomic sequencing of the *PAI1* proximal promoter region in the WS(S15aIR) strain showed a similar pattern to that previously determined for wild-type WS, except for a partial reduction in CG methylation. These results indicate that transcription through the inverted repeat is

required for maintaining dense methylation on singlet *PAI* genes but not on the inverted repeat itself.

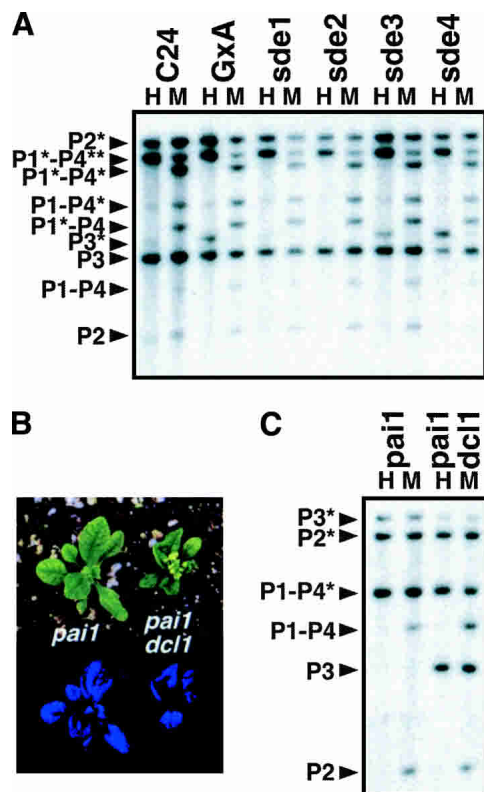
#### *RNA silencing mutations and a dicer mutation do not affect PAI methylation*

Aberrant RNAs in plants can trigger both RNA silencing of homologous transcripts and cytosine methylation of homologous genomic DNA (see introduction). Genetic screens in *Arabidopsis* have identified several loci required for RNA silencing and maintenance of DNA methylation on reporter transgenes that express aberrant RNAs, including *SDE1*, *SDE2*, *SDE3*, and *SDE4* (Dalmay et al. 2000b, 2001). The *SDE1/SGS2* locus encodes a predicted RNA-dependent RNA polymerase (Dalmay et al. 2000b; Mourrain et al. 2000), and the *SDE3* locus encodes a predicted RNA helicase (Dalmay et al. 2001). These gene products are thought to be processing factors that convert precursor aberrant RNA species into dsRNA during RNA silencing and RNA-directed DNA methylation (Dalmay et al. 2000b, 2001; Béclin et al. 2002).

To assess the potential role of these RNA metabolism loci in *PAI* gene methylation, we monitored *PAI* methylation levels in mutant backgrounds using *HpaII/MspI* Southern blot analysis. The four *sde* mutants were isolated in the C24 strain background, which has similar *PAI* gene arrangements and methylation to WS (Melquist et al. 1999). Therefore, we assayed the *sde* mutant isolates directly relative to the untransformed C24 control and to the parental transgenic strain “GxA” used in the *sde* genetic screen (Fig. 6A). This analysis showed no obvious alteration in *PAI* methylation patterns in any of the four *sde* mutants. In contrast, all four isolates were previously found to reduce methylation on the reporter transgenes used in the *sde* genetic screen (Dalmay et al. 2000b, 2001). Our result argues that *PAI1*–*PAI4* directly produces a methylation-inducing RNA, such as a dsRNA, without the need for processing by SDE factors.

We also tested whether dicer function might be involved in *PAI* methylation via processing *PAI1*–*PAI4* dsRNA read-through transcripts into smRNAs. The *dicer-like1* (*dcl1*) allele that we used for this analysis, *dcl1-9*, is a kanamycin resistance insertional disruption that confers developmental pleiotropy and sterility when homozygous (Jacobsen et al. 1999; Schauer et al. 2002). This mutation has been previously shown to block processing of endogenous micro-RNAs in *Arabidopsis* (Park et al. 2002; Reinhart et al. 2002; Kasschau et al. 2003), but not small RNAs associated with RNA silencing triggered by a high-expression inverted repeat transgene construct (Finnegan et al. 2003). Because *dcl1* was isolated in a strain background with three unmethylated *PAI* genes, we crossed this allele into the WS *pai1* reporter background to monitor effects on *PAI* gene silencing and DNA methylation. The WS *pai1* reporter strain carries a crippling missense mutation in the *PAI1* gene, and displays strong blue fluorescence and other *PAI*-deficient phenotypes because the only other functional *PAI* gene, *PAI2*, is densely methylated and silenced (Bartee and





**Figure 6.** *PAI* methylation is not reduced in *sde* or *dcl1* mutant plants. (A) Genomic DNA from wild-type C24, parental GxA (a transgenic line of C24), or the indicated *sde* mutants in the GxA background was digested with *Hpa*II (H) or *Msp*I (M) and probed with the *PAI* internal cDNA probe. Methylated bands are denoted with asterisks. (P1–P4) *PAI1–PAI4*; (P2) *PAI2*; (P3) *PAI3*. Note that in C24 there are three *Msp*I sites in *PAI1–PAI4* affected by methylation (Melquist et al. 1999). (B) Representative sibling *DCL1/dcl1* and *dcl1/dcl1* plants in the WS *pai1* reporter background are shown photographed under visible (top) and UV (bottom) light. (C) Genomic DNA from the WS *pai1* parental strain or a representative line of *pai1 dcl1* was digested with *Hpa*II or *Msp*I and probed with the *PAI* internal cDNA probe. *PAI* species are denoted as in A.

Bender 2001; Bartee et al. 2001; Malagnac et al. 2002). Mutations that reduce *PAI2* methylation and silencing confer reduced fluorescence in this background, which is easily monitored by inspection under UV light.

The effects of *dcl1* on *PAI* silencing and methylation were examined by segregating *dcl1/dcl1* homozygous progeny from *dcl1/DCL1* heterozygous parent plants in the WS *pai1* fluorescent background. The *dcl1* homozygous seedlings were strongly fluorescent, similar to their *DCL1* siblings (Fig. 6B). In *Hpa*II/*Msp*I Southern blot analysis, *pai1 dcl1* genomic DNA showed a similar cleavage pattern to *pai1 DCL1* parental strain genomic DNA for the *pai1–PAI4* and *PAI2* loci inherited from the methylated WS background (Fig. 6C). Note that one allele of the *PAI3* locus was inherited from the *PAI*-unmethylated *dcl1* parent in the cross (Materials and Methods), accounting for the presence of a *PAI3* demethylated

species. These results indicate that the *dcl1* mutation has no significant effect on *PAI* silencing or methylation.

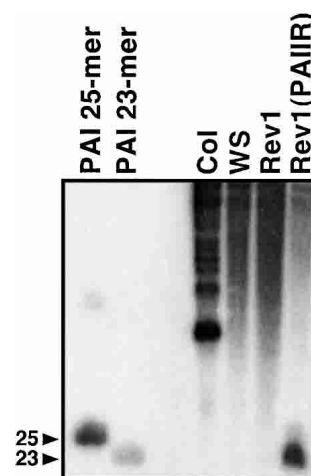
#### *PAI smRNAs are not detected in WS*

As another means of testing whether diced smRNAs might be involved in *PAI* methylation, we assayed directly for *PAI* smRNAs in WS. As a negative control for this experiment, we used RNA prepared from the Col strain, which lacks a *PAI1–PAI4* inverted repeat and which lacks *PAI* methylation. We also used RNA prepared from the Rev1 strain, which is a derivative of WS in which the *PAI1–PAI4* inverted repeat locus is deleted and the residual methylation on the *PAI2* and *PAI3* genes has been lost (Bender and Fink 1995). As a positive control, we used RNA prepared from a transgenic strain, Rev1(*PAIR*), carrying an inverted repeat of *PAI* cDNA sequences driven by the 35S promoter. The untransformed Rev1 strain is nonfluorescent, but introduction of the *PAIR* transgene in single copy induces a *PAI*-deficient fluorescent phenotype, presumably via RNA silencing. The *PAI* cDNA sequences on the transgene and the corresponding *PAI* endogenous sequences are methylated in the Rev1(*PAIR*) strain (data not shown).

Analysis of *PAI* smRNAs in these strains revealed that there were no detectable 21–25 nt RNAs in the Col, WS, or Rev1 backgrounds (Fig. 7). In contrast, *PAI* smRNAs were readily detectable in Rev1(*PAIR*) plants, with a prominent lower band and a fainter higher band, similar to the pattern previously observed for a *GFP* transgene undergoing RNA silencing (Dalmay et al. 2000b).

#### Discussion

Cytosine methylation and accompanying changes in chromatin structure play an important role in regulation



**Figure 7.** *PAI* small RNAs are not detected in WS. Small RNA fractions were prepared from Col, WS, Rev1, and Rev1(*PAIR*), and hybridized with a *PAI* cDNA antisense probe. Positions of 23 and 25 nt DNA *PAI* sense strand oligomers are denoted with arrows. Hybridization with a *PAI* cDNA sense probe gave similar results (data not shown).



of eukaryotic gene expression and genome stability. A key issue is how methylation is targeted to particular genomic regions. We characterized the nature of methylation signals for the methylated endogenous *PAI* genes in the WS strain of *Arabidopsis* using genetic and biochemical methods. Previous experiments showed that the *PAI1-PAI4* inverted repeat arrangement of the *PAI* genes in WS provides a trigger for *PAI* methylation (Bender and Fink 1995; Luff et al. 1999; Melquist et al. 1999). We found that this inverted repeat is transcribed from an upstream unmethylated promoter. To test the hypothesis that an RNA species produced from *PAI1-PAI4* triggers *PAI* methylation, we suppressed transcription from the upstream promoter using a transgene that directs methylation and silencing of the promoter sequences. Suppression of transcription through *PAI1-PAI4* resulted in reduced methylation on singlet *PAI* genes, suggesting that a *PAI* RNA species emanating from *PAI1-PAI4* targets methylation to these genes. An alternative possibility is that the reduced methylation results as an indirect consequence of chromatin structure changes at *PAI1-PAI4*, but given the body of evidence for RNA-based DNA methylation signals in plants, we think this alternative model is unlikely.

In plant genomes, methylated regions have a basal level of methylation found primarily in CG dinucleotide contexts. For example, the centromere-associated repeats in *Arabidopsis* carry mainly CG methylation (Vongs et al. 1993). This CG patterning is thought to be the most easily maintained after each round of DNA replication. However, a subset of methylated regions in the *Arabidopsis* genome, such as the *PAI* genes, have an additional layer of methylation found in non-CG cytosine contexts. Previously, it was suggested that this non-CG methylation is a hallmark of RNA-directed DNA methylation, based on methylation patterning triggered by an RNA viroid (Pélissier et al. 1999). In accord with this view, the S15aIR transgene triggers dense CG and non-CG methylation on its target promoter (Fig. 4). Therefore, the high proportion of non-CG methylation on the WS *PAI* genes (Luff et al. 1999) suggests an RNA trigger for methylation. The residual CG methylation found on the singlet *PAI* genes when transcription is suppressed in the WS(S15aIR) strain (Fig. 5) likely reflects a basal level of maintenance methylation that persists when the signal from the inverted repeat is impaired.

It has been proposed that either precursor dsRNAs or diced smRNAs processed from dsRNA could constitute the RNA-directed DNA methylation signal, because smRNAs typically accumulate in plant transgene and virus RNA silencing/DNA methylation systems. The endogenous *PAI* gene methylation system differs from previously characterized systems in that smRNA species associated with RNA silencing are not detectable by RNA gel blot analysis (Fig. 7), and full-length *PAI* transcripts, including 3' read-through species, are not efficiently degraded (Fig. 2). In addition, *PAI1-PAI4*-triggered methylation accumulates slowly over several generations of inbreeding (Luff et al. 1999; Malagnac et al.

2002) relative to methylation triggered by 35S promoter-driven transgenes or RNA viruses that produce high levels of RNAs (Jones et al. 1998, 1999; Mette et al. 1999, 2000; Dalmay et al. 2000a,b; Mourrain et al. 2000; Wang et al. 2001). Taken together, these differences can be accounted for by the relatively low level of transcription through the endogenous *PAI1-PAI4* locus producing insufficient aberrant RNAs for effective RNA silencing or rapid DNA methylation. However, the *PAI* aberrant RNAs are effective for progressive DNA methylation of target loci.

Our results are consistent with either of two general models for RNA-directed DNA methylation: *PAI* methylation could be signaled directly by dsRNA produced by read-through transcription from *PAI1* into *PAI4*, or it could be signaled by low levels of smRNAs. In the second case, a dicer activity other than DCL1 would be involved in RNA processing, because a *dcl1* mutation has no effect on *PAI* methylation (Fig. 6C). Recently, work from several groups has led to the view that plants contain two distinct dicer activities: the DCL1 activity needed to process micro-RNAs, and a different activity needed to process inhibitory smRNAs associated with RNA silencing (siRNAs; Hamilton et al. 2002; Finnegan et al. 2003; Tang et al. 2003). Thus, if *PAI* methylation is triggered by smRNAs, they are most likely produced by the siRNA dicer(s). In this regard, there are three other putative dicer-encoding genes in the *Arabidopsis* genome (Schauer et al. 2002; Finnegan et al. 2003). Mutations in these genes have not been recovered from forward genetic screens for RNA silencing mutants, suggesting that such dicer mutants may be redundant or lethal. It should be noted that the single dicer-encoding gene in *Schizosaccharomyces pombe* is required for centromeric heterochromatin formation, arguing that this fungal system uses smRNAs rather than unprocessed precursors to communicate with homologous genomic DNA (Volpe et al. 2002). Regardless of whether the *PAI* methylation signal is unprocessed dsRNA or low levels of smRNAs, our results show that efficient DNA methylation can be separated from efficient RNA silencing on the basis of the amount of aberrant RNA produced from the affected locus.

Although we can detect *PAI1-PAI4* read-through transcripts in the polyadenylated fraction of RNAs (Fig. 2B), we do not know whether the methylation trigger species, which may be subdetectable by RNA gel blot, is processed by splicing or polyadenylation. Dense methylation is found on intron as well as exon sequences of the *PAI* genes (Luff et al. 1999), suggesting that unspliced RNA is present in the trigger population. Capturing, cloning, and sequencing rare *PAI* smRNAs produced in WS might shed light on which regions of *PAI1* and *PAI4* are present in precursor dsRNA species.

Interestingly, *PAI1-PAI4* methylation itself is not affected by reduced transcription (Fig. 5). This result is in agreement with a similar observation from a transgenic promoter silencing system (Mette et al. 1999), and with our previous observation that a promoterless *pai1-pai4* inverted repeat transgene can trigger its own methyl-

ation but not the methylation of endogenous singlet *PAI* genes (Luff et al. 1999). A possible explanation is that the unusual inverted repeat structure of the locus might provide an intrinsic RNA-independent methylation signal. Alternatively, methylation-inducing RNA produced from the inverted repeat could act much more efficiently in *cis* on the inverted repeat itself than in *trans* on singlet *PAI* genes, so that the inverted repeat could maintain methylation even with extremely low levels of RNA.

We recently found that mutation of the histone methyltransferase SUVH4 confers a similar *PAI* methylation profile to that observed in the WS(S15aIR) strain: reduced non-CG methylation on singlet *PAI* genes but unaffected methylation on *PAI1*–*PAI4* (Malagnac et al. 2002). This finding suggests that SUVH4-mediated histone modifications could act to transmit an RNA signal into efficiently maintained dense DNA methylation patterning. In this model, the methylation on *PAI1*–*PAI4* would be SUVH4 independent either because it is RNA independent, or because there is a sufficiently high accumulation of *cis*-acting RNA to bypass the need for SUVH4.

We have shown that a signal for dense methylation of identical sequences at unlinked positions in a plant genome can be generated by relatively low levels of transcription through an inverted repeat gene arrangement, given sufficient generations for the DNA methylation to accumulate. This signal comprises either unprocessed dsRNAs or diced smRNAs, which presumably interact with homologous DNA sequences and recruit cytosine methyltransferases. By extension, other sequence arrangements that can produce even low levels of dsRNA, such as dispersed transposable elements that are transcribed through on sense or antisense strands from flanking promoters, could potentially provide a DNA methylation signal. For DNA-based transposons that move via a cut-and-paste mechanism, methylation of transposon ends could prevent movement by blocking access of transposase proteins. Thus, even levels of dsRNA too low to be effectively processed by the RNA silencing machinery into an RNA degradation signal could still target a defense against invasive repeated sequences.

## Materials and methods

### RNA extraction and analysis

Total RNA was isolated from 4-week-old plants as previously described (Nagy et al. 1988). Polyadenylated RNA was separated from nonpolyadenylated RNA using the Dynabeads mRNA extraction kit (Dyna). RNA gel blots were performed as previously described (Melquist et al. 1999). The *PAI* probe was an internal 0.7-kb *Pst*I Col *PAI1* (Atlg07780) cDNA fragment (Bender and Fink 1995). The *S15a* (Atlg07770) probe was an internal 400-bp cDNA fragment. A  $\beta$ -tubulin (At5g44340) cDNA probe was used to control for loading differences. Ambion Millenium RNA markers were used to determine transcript length.

For RACE analysis, 1  $\mu$ g of total RNA was used as input for first-strand synthesis with the SMART RACE cDNA amplifi-

cation kit (Clontech). A *PAI*-specific reverse primer was used to amplify the 5' ends of transcripts: P135 (5'-GATTCCCCCAGC TAAGAGCCACCC-3'). This primer is a perfect match to all the *PAI* genes in Col and WS. A *PAI*-specific forward primer was used to amplify the 3' ends of transcripts: P134 (5'-TGAGCTGC AGcGTTTCCAACACAGAG-3'). The P134 primer has complete identity with WS *PAI1* and *PAI4*; one mismatch with WS *PAI2*, Col *PAI1*, and Col *PAI2* (lowercase); and an additional mismatch with WS and Col *PAI3* (underlined). Modified amplification conditions from manufacturer's protocols were one cycle of 94°C for 5 min; five cycles of 94°C for 30 sec, 70°C for 1 min, and 72°C for 3 min; five cycles of 94°C for 30 sec, 68°C for 1 min, and 72°C for 3 min; 32 cycles of 94°C for 30 sec, 60°C for 1 min, and 72°C for 3 min; and one cycle of 72°C for 10 min. PCR products were run on 0.8% agarose gels. DNA was isolated from generous areas surrounding prominent bands and cloned using the pGEM T-EASY vector system (Promega). For each species, eight clones were sequenced to obtain an overview of the population (Tables 1, 2). The 5' and 3' RACE data agree with previous *PAI* cDNA sequencing results (Melquist et al. 1999).

Small RNAs were isolated according to previously described methods (Hamilton and Baulcombe 1999; Dalmay et al. 2000a; Mette et al. 2000). For total RNA preparation, 1 g of frozen ground tissue was resuspended in 5 mL extraction buffer (50 mM Tris-HCl at pH 8.5, 10 mM EDTA at pH 8.0, 100 mM NaCl, 2% SDS) and incubated at 55°C for 5 min. Samples were placed on ice for 2 min, and then extracted twice with phenol:chloroform. After the second extraction, samples were ethanol precipitated, and the pellets were resuspended in 3.87 mL of water and incubated for 15 min at 65°C. Enrichment of the small RNA fraction was performed as described (Dalmay et al. 2000a). Fifty micrograms of RNA was run at 400 volts for 4 h on a 15% polyacrylamide, 7 M Urea, 0.5 $\times$  TBE gel and transferred to membrane as described (Hamilton and Baulcombe 1999; Dalmay et al. 2000a). Blots were hybridized with *PAI1* 0.7-kb *Pst*I internal cDNA antisense or sense strand RNA probes in 50% formamide, 7% SDS, 50 mM sodium phosphate buffer (pH 7.2), 0.3 M NaCl, 5 $\times$  Denhardt's solution, and 100  $\mu$ g/mL salmon sperm DNA overnight at 40°C and washed three times with 2 $\times$  SSC, 0.2% SDS at 50°C.

### Plant strains

To make the WS(S15aIR) line, WS was transformed with the S15aIR construct by an *Agrobacterium*-mediated in planta method (Clough and Bent 1998). The construct was made by inserting a PCR-amplified 430-bp segment of the *S15a* promoter into the pFGC1008 vector (<http://www.chromdb.org/fgc1008.html>) in the *Asc*I–*Swa*I and in the *Bam*HI–*Spe*I polylinker sites to create an inverted repeat of this segment flanking a central *GUS* gene-derived spacer sequence. Primers used were S15a5 (5'-GCACTAGTGGCGCGCCGGAAGTTGATTGAAGTAG-3') and S15a6 (5'-GCGGATCCATTAAATTGTACCTTAAGAT TGGGAG-3'). Three independent single-copy lines were identified by Southern blot analysis with end-specific probes. Data for a single representative line are shown. The Rev1(PAIR) line was made by similar methods, using a 735-bp fragment of a Col *PAI1* cDNA inserted as an inverted repeat in the pFGC1008 vector. Primers used were PAIRF (5'-GGACTAGTGGCGCGC CACTGATCTCCATGT-3') and PAIRR (5'-CGGGATCCATT TAAATACCGCTACTAACAT-3'). Note that the *PAI* segment in this construct is coextensive with the *PAI* cDNA probe used for RNA blot analysis (Fig. 7).

To introduce the *dcl1-9* insertion allele from a strain background with unmethylated Ler alleles at all three *PAI* loci into the WS *pai1* reporter strain background (Bartee and Bender

2001), the two strains were crossed and F2 progeny were selected for kanamycin resistance diagnostic of the *dcl1* insertion (either heterozygous or homozygous) and screened for blue fluorescence diagnostic of homozygous methylated WS *pai1*-*PAI4* and WS *PAI2* loci. Eight fluorescent *DCL1/dcl1* F2 individuals were identified based on normal floral morphology, and their *PAI* genotypes at all three *PAI* loci were determined with PCR-based markers (Luff et al. 1999). F3 progeny segregating for the *dcl1* mutation were analyzed from each of the eight lines, and in every case the *dcl1* homozygous mutants showed similar fluorescence intensity to their *DCL1* siblings throughout all stages of growth. For two representative lines, which were both heterozygous Ler/WS at the *PAI3* locus, eight F3 adult plants displaying the characteristic *dcl1* morphological defects were pooled to prepare genomic DNA for Southern blot analysis of methylation.

#### DNA analysis

Southern blots were performed as previously described (Melquist et al. 1999) except that the low molecular weight fragments shown in Figure 4 were resolved on a 1.5% agarose gel. Bisulfite sequencing was performed as previously described (Luff et al. 1999) except that genomic DNA was cleaved with *EcoRV* prior to treatment, and only 5 µg of DNA was used. *PAI* PCR products were cloned into pBluescript KS II+ (Stratagene) and *S15a* promoter PCR products were cloned into pGEM T-EASY (Promega) for sequencing. For each region, eight independent clones were sequenced and the compiled data are shown in Figures 4 and 5. The *PAI1* top strand was amplified with primers PITF (5'-GCTCTAGATGYAGAATTTGTGYATTTG-3') and PITR (5'-CGGGATCCTRTTRACATCTTAATTTTCAC-3'). The *PAI2* top strand was amplified with primers P2TF (5'-GCTCTAGATTAATGTTTGAAGATGATAAG-3') and PITR. These primers are the same as those used for previous *PAI* proximal promoter region methylation analysis (Luff et al. 1999; Bartee and Bender 2001; Bartee et al. 2001; Malagnac et al. 2002). They amplify segments extending from upstream sequences unique to each gene through the *PAI*-identical regions just upstream of the translation start codon. The *S15a* top strand was amplified with primers S15aTF2 (5'-GCTCTAGAGGGAAAAGGAAGTTGATTGAAG-3') and S15aTR (5'-CGGGATCCAATTARCARTATCTCACACTTC-3'). The *S15a* bottom strand was amplified with primers S15aBF2 (5'-CTTCCCCRCCTTTRRTTCTTCTCC-3') and S15aBR2 (5'-GATAAGYAGATYAGATTYTG-3'). These primers immediately flank the region targeted for methylation by the S15aIR construct.

#### Acknowledgments

We thank the *Arabidopsis* Biological Resource Center for providing the *dcl1*-9 mutant strain (CS3828), D. Baulcombe for providing the GxA and *sde* mutant strains, and M.F. Mette and M. Matzke for advice on small RNA isolation and detection. This work was supported by National Institutes of Health grant GM61148 to J.B. and by National Institutes of Environmental Health Sciences Training Grant ES 07141 to S.M.

The publication costs of this article were defrayed in part by payment of page charges. This article must therefore be hereby marked "advertisement" in accordance with 18 USC section 1734 solely to indicate this fact.

#### References

Assaad, F.F., Tucker, K.L., and Signer, E.R. 1993. Epigenetic repeat-induced gene silencing (RIGS) in *Arabidopsis*. *Plant Mol. Biol.* **22**: 1067–1085.

- Bartee, L. and Bender, J. 2001. Two *Arabidopsis* methylation-deficiency mutations confer only partial effects on a methylated endogenous gene family. *Nucleic Acids Res.* **29**: 2127–2134.
- Bartee, L., Malagnac, F., and Bender, J. 2001. *Arabidopsis cmt3* chromomethylase mutations block non-CG methylation and silencing of an endogenous gene. *Genes & Dev.* **15**: 1753–1758.
- Béclin, C., Boutet, S., Waterhouse, P., and Vaucheret, H. 2002. A branched pathway for transgene-induced RNA silencing in plants. *Curr. Biol.* **12**: 684–688.
- Bender, J. 2001. A vicious cycle: RNA silencing and DNA methylation in plants. *Cell* **106**: 129–132.
- Bender, J. and Fink, G.R. 1995. Epigenetic control of an endogenous gene family is revealed by a novel blue fluorescent mutant of *Arabidopsis*. *Cell* **83**: 725–734.
- Bird, A. 2002. DNA methylation patterns and epigenetic memory. *Genes & Dev.* **16**: 6–21.
- Clough, S.J. and Bent, A.F. 1998. Floral dip: A simplified method for *Agrobacterium*-mediated transformation of *Arabidopsis thaliana*. *Plant J.* **16**: 735–743.
- Dalmay, T., Hamilton, A., Mueller, E., and Baulcombe, D.C. 2000a. *Potato Virus X* amplicons in *Arabidopsis* mediate genetic and epigenetic gene silencing. *Plant Cell* **12**: 369–379.
- Dalmay, T., Hamilton, A., Rudd, S., Angell, S., and Baulcombe, D.C. 2000b. An RNA-dependent RNA polymerase gene in *Arabidopsis* is required for posttranscriptional gene silencing mediated by a transgene but not by a virus. *Cell* **101**: 543–553.
- Dalmay, T., Horsefield, R., Braunstein, T.H., and Baulcombe, D.C. 2001. *SDE3* encodes an RNA helicase required for posttranscriptional gene silencing in *Arabidopsis*. *EMBO J.* **20**: 2069–2077.
- Finnegan, E.J., Genger, R.K., Peacock, W.J., and Dennis, E.S. 1998. DNA methylation in plants. *Annu. Rev. Plant Physiol. Plant Mol. Biol.* **49**: 223–247.
- Finnegan, E.J., Margis, R., and Waterhouse, P.M. 2003. Posttranscriptional gene silencing is not compromised in the *Arabidopsis* *CARPEL FACTORY* (*DICER-LIKE1*) mutant, a homolog of Dicer-1 from *Drosophila*. *Curr. Biol.* **13**: 236–240.
- Frommer, M., McDonald, L.E., Millar, D.S., Collis, C.M., Watt, F., Grigg, G.W., Molloy, P.L., and Paul, C.L. 1992. A genomic sequencing protocol that yields a positive display of 5-methylcytosine residues in individual DNA strands. *Proc. Natl. Acad. Sci.* **89**: 1827–1831.
- Garrick, D., Fiering, S., Martin, D.I.K., and Whitelaw, E. 1998. Repeat-induced gene silencing in mammals. *Nat. Genet.* **18**: 56–59.
- Hamilton, A.J. and Baulcombe, D.C. 1999. A species of small antisense RNA in posttranscriptional gene silencing in plants. *Science* **286**: 950–952.
- Hamilton, A., Voinnet, O., Chappell, L., and Baulcombe, D. 2002. Two classes of short interfering RNA in RNA silencing. *EMBO J.* **21**: 4671–4679.
- Henikoff, S. 1998. Conspiracy of silence among repeated transgenes. *Bioessays* **20**: 532–535.
- Jacobsen, S.E., Running, M.P., and Meyerowitz, E.M. 1999. Disruption of an RNA helicase/RNase III gene in *Arabidopsis* causes unregulated cell division in floral meristems. *Development* **126**: 5231–5243.
- Jones, A.L., Thomas, C.L., and Maule, A.J. 1998. *De novo* methylation and co-suppression induced by a cytoplasmically replicating plant RNA virus. *EMBO J.* **17**: 6385–6393.
- Jones, L., Hamilton, A.J., Voinnet, O., Thomas, C.L., Maule, A.J., and Baulcombe, D.C. 1999. RNA–DNA interactions

- and DNA methylation in post-transcriptional gene silencing. *Plant Cell* **11**: 2291–2301.
- Kasschau, K.D., Xie, Z., Allen, E., Llave, C., Chapman, E.J., Krizan, K.A., and Carrington, J.C. 2003. P1/HC-Pro, a viral suppressor of RNA silencing, interferes with *Arabidopsis* development and miRNA function. *Dev. Cell* **4**: 205–217.
- Kato, M., Miura, A., Bender, J., Jacobsen, S.E., and Kakutani, T. 2003. Role of CG and non-CG methylation in immobilization of transposons in *Arabidopsis*. *Curr. Biol.* **13**: 421–426.
- Luff, B., Pawlowski, L., and Bender, J. 1999. An inverted repeat triggers cytosine methylation of identical sequences in *Arabidopsis*. *Mol. Cell* **3**: 505–511.
- Malagnac, F., Bartee, L., and Bender, J. 2002. An *Arabidopsis* SET domain protein required for maintenance but not establishment of DNA methylation. *EMBO J.* **21**: 6842–6852.
- Martienssen, R.A. and Colot, V. 2001. DNA methylation and epigenetic inheritance in plants and filamentous fungi. *Science* **293**: 1070–1074.
- Matzke, M., Matzke, A.J.M., and Kooter, J.M. 2001. RNA: Guiding gene silencing. *Science* **293**: 1080–1083.
- Melquist, S., Luff, B., and Bender, J. 1999. *Arabidopsis* PAI gene arrangements, cytosine methylation and expression. *Genetics* **153**: 401–413.
- Mette, M.F., van der Winden, J., Matzke, M.A., and Matzke, A.J.M. 1999. Production of aberrant promoter transcripts contributes to methylation and silencing of unlinked homologous promoters *in trans*. *EMBO J.* **18**: 241–248.
- Mette, M.F., Aufsatz, W., van der Winden, J., Matzke, M.A., and Matzke, A.J.M. 2000. Transcriptional silencing and promoter methylation triggered by double-stranded RNA. *EMBO J.* **19**: 5194–5201.
- Miura, A., Yonebayashi, S., Watanabe, K., Toyama, T., Shimada, H., and Kakutani, T. 2001. Mobilization of transposons by a mutation abolishing full DNA methylation in *Arabidopsis*. *Nature* **411**: 212–214.
- Mourrain, P., Béclin, C., Elmayan, T., Feuerbach, F., Godon, C., Morel, J.-B., Jouette, D., Lacombe, A.-M., Nikic, S., Picault, N., et al. 2000. *Arabidopsis* SGS2 and SGS3 genes are required for posttranscriptional gene silencing and natural virus resistance. *Cell* **101**: 533–542.
- Nagy, F., Kay, S.A., and Chua, N.-H. 1988. Analysis of gene expression in transgenic plants. In *Plant molecular biology manual* (eds. S.B. Gelvin and R.A. Schilperoort), pp. B4/11–B4/12. Kluwer Academic Publishers, Dordrecht, Netherlands.
- Park, W., Li, J., Song, R., Messing, J., and Chen, X. 2002. CARPEL FACTORY, a dicer homolog, and HEN1, a novel protein, act in microRNA metabolism in *Arabidopsis thaliana*. *Curr. Biol.* **12**: 1484–1495.
- Pélissier, T., Thalmeir, S., Kempe, D., Sanger, H.-L., and Wassenegger, M. 1999. Heavy de novo methylation at symmetrical and non-symmetrical sites is a hallmark of RNA-directed DNA methylation. *Nucleic Acids Res.* **27**: 1625–1634.
- Reinhart, B.J., Weinstein, E.G., Rhoades, M.W., Bartel, B., and Bartel, D.P. 2002. MicroRNAs in plants. *Genes & Dev.* **16**: 1616–1626.
- Schauer, S.E., Jacobsen, S.E., Meinke, D.W., and Ray, A. 2002. DICER-LIKE1: Blind men and elephants in *Arabidopsis* development. *Trends Plant Sci.* **7**: 487–491.
- Sijen, T., Vijn, I., Rebocho, A., van Blokland, R., Roelofs, D., Mol, J.N.M., and Kooter, J.M. 2001. Transcriptional and posttranscriptional gene silencing are mechanistically related. *Curr. Biol.* **11**: 436–440.
- Singer, T., Yordan, C., and Martienssen, R.A. 2001. Robertson's Mutator transposons in *A. thaliana* are regulated by the chromatin-remodeling gene *Decrease in DNA Methylation* (DDM1). *Genes & Dev.* **15**: 591–602.
- Tang, G., Reinhart, B.J., Bartel, D.P., and Zamore, P.D. 2003. A biochemical framework for RNA silencing in plants. *Genes & Dev.* **17**: 49–63.
- Volpe, T.A., Kidner, C., Hall, I.M., Teng, G., Grewal, S.I.S., and Martienssen, R.A. 2002. Regulation of heterochromatic silencing and histone H3 lysine-9 methylation by RNAi. *Science* **297**: 1833–1837.
- Vongs, A., Kakutani, T., Martienssen, R.A., and Richards, E.J. 1993. *Arabidopsis thaliana* DNA methylation mutants. *Science* **260**: 1926–1928.
- Wang, M.-B., Wesley, S.V., Finnegan, E.J., Smith, N.A., and Waterhouse, P.M. 2001. Replicating satellite RNA induces sequence-specific DNA methylation and truncated transcripts in plants. *RNA* **7**: 16–28.
- Wassenegger, M., Heimes, S., Riedel, L., and Sanger, H.L. 1994. RNA-directed de novo methylation of genomic sequences in plants. *Cell* **76**: 567–576.
- Yoder, J.A., Walsh, C.P., and Bestor, T.H. 1997. Cytosine methylation and the ecology of intragenomic parasites. *Trends Genet.* **13**: 335–340.





## Transcription from an upstream promoter controls methylation signaling from an inverted repeat of endogenous genes in *Arabidopsis*

Stacey Melquist and Judith Bender

*Genes Dev.* 2003, **17**:

Access the most recent version at doi:[10.1101/gad.1081603](https://doi.org/10.1101/gad.1081603)

---

### References

This article cites 44 articles, 22 of which can be accessed free at:  
<http://genesdev.cshlp.org/content/17/16/2036.full.html#ref-list-1>

### License

### Email Alerting Service

Receive free email alerts when new articles cite this article - sign up in the box at the top right corner of the article or [click here](#).

---

