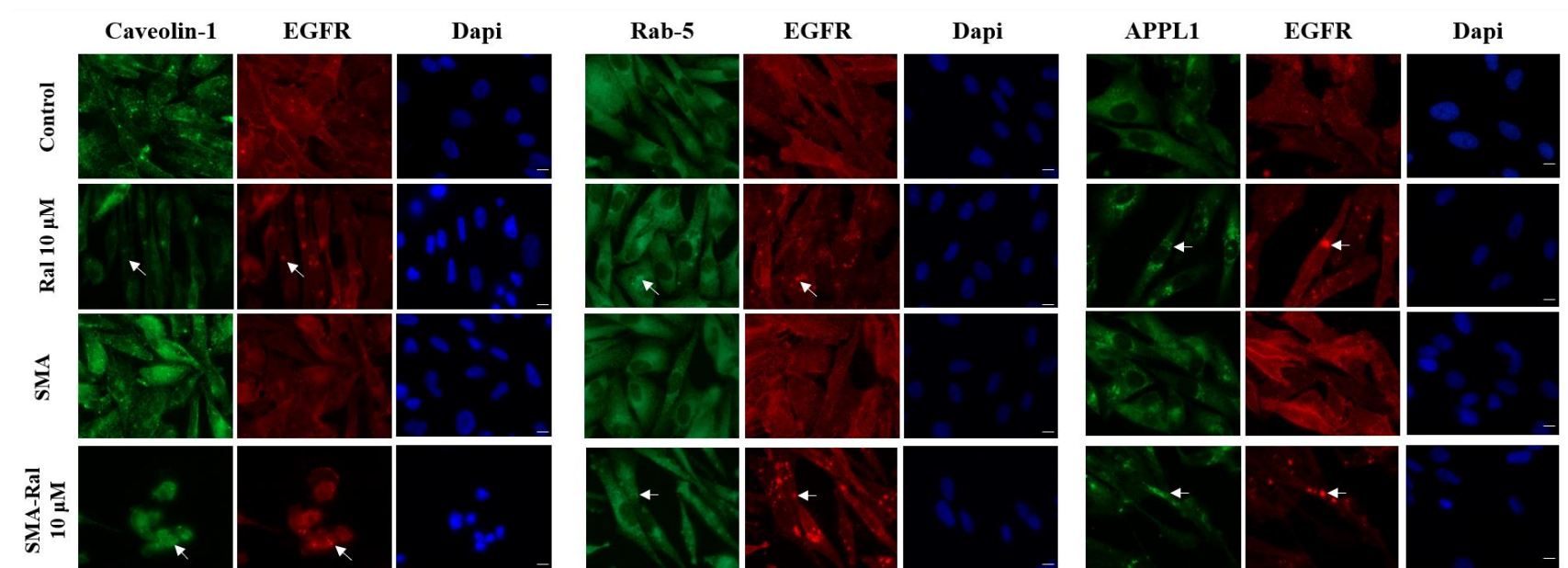


SUPPLEMENTAL DATA

Supplementary Table 1: Determination of the cytotoxicity of Ral and SMA-Ral treatments in combination with either an inhibitor of P-gp (valspodar) or an inhibitor of BRCP (Ko143) in MDA-mb-231 cell line.

Cell line	IC ₅₀ (μM)	
	SMA-Ral	Free Ral
Control	7.9 ± 0.4	11.2 ± 0.2
Valspodar	7.6 ± 0.3	9.3 ± 0.4
Ko143	7.2 ± 0.8	10.8 ± 0.6



Supplementary Figure 1: Effects of Ral and SMA-Ral on the intracellular colocalization of EGFR with caveolin-1, Rab-5 and APPL-1. MDA-MB-231 cells were treated with either Ral and SMA-Ral at 10 μ M. After 48 h incubation, the intracellular localization was visualized by immunohistochemistry. Representative pictures were taken. Scale bar = 10 μ m. Experiments were performed in triplicate (n=3).