


 Cite this: *RSC Adv.*, 2019, 9, 18641

Synthesis of a novel magnetic *Caragana korshinskii* biochar/Mg–Al layered double hydroxide composite and its strong adsorption of phosphate in aqueous solutions†

 Qingliang Cui,^{ac} Gaojie Jiao,^{ac} Jiyong Zheng,^{ID}*^{ab} Tongtong Wang,^{ID}^{ab} Gaolin Wu^{ab} and Gaoliang Li^{ac}

Phosphate pollution of aquatic ecosystems is of great concern and requires the development of high-performance materials for effective pollution treatment. To realize efficient phosphate removal from aqueous solution, an easily separable magnetic (Fe₃O₄) *Caragana korshinskii* biochar/Mg–Al layered double hydroxide composite (denoted as FCB/MAC) was synthesized via two-step electro-assisted modification for the first time. Subsequently, the physical and chemical properties of FCB/MAC were characterized. Furthermore, the sorption mechanism for phosphate removal was investigated in detail. The results indicated that Fe₃O₄ and the Mg–Al layered double hydroxide were successfully embedded in the biochar matrix. Moreover, FCB/MAC exhibited a high phosphate adsorption capacity and excellent magnetic properties for easy recovery. The maximum phosphate sorption capacity of FCB/MAC was 252.88 mg g^{−1}, which is much higher than the capacities of most magnetic phosphate adsorbents. In addition, the adsorption kinetics and isotherms indicated that phosphate adsorption by FCB/MAC was controlled by the pseudo-second-order kinetic model and the Langmuir–Freundlich isotherm model. The phosphate adsorption mechanism involves anion exchange, electrostatic attraction, and ligand exchange. After five adsorption–desorption cycles, the phosphate adsorption capacity of FCB/MAC was 25.71 mg g^{−1} with 51.43% removal efficiency and high recyclability. Thus, the composite prepared in this study is a promising adsorbent for phosphate removal from aqueous solution, and this work provides an excellent reference for constructing novel biochar-based phosphate adsorbents.

Received 17th March 2019

Accepted 5th June 2019

DOI: 10.1039/c9ra02052g

rsc.li/rsc-advances

1. Introduction

Phosphate, as a basic nutrient, is vital for the growth of aquatic organisms. However, the excessive emission of phosphate into runoff systems has been confirmed to cause eutrophication, which can result in serious water quality deterioration and aquatic ecosystem collapse. Furthermore, phosphate pollution not only could increase the cost of water treatment and decrease the recreational value of waterways but also lead to the formation of algal blooms, which is harmful to human health owing to the production of cyanotoxins.¹ Therefore, there is an

immediate need to remove excess phosphates from aquatic ecosystems.

Biochar, a pyrogenic black carbon, is mainly produced from various carbon-rich biomass and waste sources by thermal decomposition processes under moderate temperatures and oxygen-limited environments.² Owing to its wide environmental applications and excellent physicochemical properties, such as high surface porosity and numerous surface functional groups, biochar has been recognized as a promising adsorbent for the removal of various contaminants in solution.³ However, the net negative surface charge of biochar seriously limits its adsorption affinity towards anions such as phosphate.^{4,5} For example, the phosphate adsorption capacities of biochar from corn cobs, garden wood waste, and wood chips are 0.036, 0.132, and 0.296 mg g^{−1}, respectively.⁶ In addition, difficulties in separating and recycling biochar from phosphate solutions have seriously restricted its application in wastewater remediation. Therefore, methods for simultaneously improving the phosphate adsorption capacity and recovery efficiency of biochar are essential.

^aState Key Laboratory of Soil Erosion and Dryland Farming on Loess Plateau, Institute of Soil and Water Conservation, Chinese Academy of Sciences and Ministry of Water Resources, Yangling, Shaanxi, 712100, China. E-mail: zhjy@ms.iswc.ac.cn; Fax: +86-29-87016082; Tel: +86-29-87012884

^bState Key Laboratory of Soil Erosion and Dryland Farming on Loess Plateau, Northwest A&F University, Yangling, Shaanxi 712100, China

^cUniversity of Chinese Academy of Sciences, Beijing 100049, China

† Electronic supplementary information (ESI) available. See DOI: 10.1039/c9ra02052g



With the aim of improving the phosphate adsorption capacity and recycling performance of biochar, some composites, such as MgFe_2O_4 - and $\text{La/Fe}_3\text{O}_4$ -modified biochar composites, have been produced by grafting iron and another metal onto biochar.^{7–11} However, the phosphate adsorption capacities of these metal-modified biochar composites were still low. However, the formation of magnetic layered double hydroxides (LDHs) on the surface of biochar can greatly improve the adsorption capacity because LDHs are cationic clays with large anion sorption capacities. LDHs consist of positively charged metal hydroxide layers and are generally described as $[\text{M}_{1-x}\text{M}_x^{3+}(\text{OH})_2][\text{A}^{n-}]_{x/n} \cdot y\text{H}_2\text{O}$, where M^{2+} is a divalent cation (Mg^{2+} , Cu^{2+} , Zn^{2+} , etc.), M^{3+} is a trivalent cation (Fe^{3+} , Al^{3+} , Cr^{3+} , etc.), and A^{n-} is an interlayer anion (CO_3^{2-} , NO_3^- , Cl^- , OH^- , etc.). In general, the x value ranges between 0.17 and 0.33.¹² LDH composites have exhibited excellent abilities to adsorb pollutants.^{13–17} However, LDHs may have limited capabilities for removing anion contaminants owing to their tight layer stacking. Therefore, composite materials were prepared by introducing biochar onto the LDH frame, which can increase efficiency and reduce costs.

The methods for modifying biochar include microwave irradiation,¹⁸ hydrothermal coprecipitation,^{19,20} and electro-assisted modification.²¹ However, microwave irradiation is complex, and hydrothermal coprecipitation is time consuming when more than two chemicals are utilized. Furthermore, the general electro-assisted modification method gives products that are unstable. However, the electro-assisted modification method could provide some advantages, as it is simple to operate, rapid, and allows upgrading of the properties of modified biochar *via* the generation of crystalline structures. Therefore, there is an urgent need for an improved electro-assisted modification method.

In this study, the general electro-assisted modification method was optimized to facilitate both obtaining a biochar with magnetic properties and producing an LDH on the biochar surface. A novel strategy of fabricating magnetite (Fe_3O_4) and a Mg–Al LDH *via* a two-step electro-assisted modification process was developed. Magnetic Fe_3O_4 and the Mg–Al LDH were introduced to *Caragana korshinskii* biochar during the synthesis process to obtain a magnetic (Fe_3O_4) *C. korshinskii* biochar/Mg–Al LDH composite (denoted as FCB/MAC). The surface morphology, chemical composition, and magnetic properties of FCB/MAC were characterized. In addition, a series of batch experiments were carried out to investigate the effects of various parameters (initial pH, coexisting anions, contact time, and initial phosphate concentration) on the phosphate adsorption performance of FCB/MAC and elucidate the phosphate adsorption mechanism. Furthermore, the phosphate desorption behavior and recyclability of phosphate-loaded FCB/MAC were also evaluated.

2. Materials and methods

2.1. Materials

As a biochar precursor, *C. korshinskii* was collected from Shanghuang Village, Guyuan City, Ningxia Hui Autonomous

Region, China. Owing to the low utilization rate of *C. korshinskii* (<40%), there is a high abundance of most *C. korshinskii* resources. All chemicals were of AR grade and were purchased from Sinopharm Chemical Reagent Co., Ltd. (China). All experimental solutions were prepared using deionized (DI) water. Iron and aluminum electrodes were purchased from Goodfellow Cambridge Ltd. (UK).

2.2. Adsorbent preparation

2.2.1. Biochar production. The *C. korshinskii* raw materials were washed and dried in a vacuum oven for 24 h. Then, the dry raw materials were cut into pieces smaller than 2 mm. The *C. korshinskii* pieces were pyrolyzed in a box-type atmosphere furnace (GF11Q-8, Nanjing Boyuntong Instrument Technology Co., Ltd., China) at 600 °C for 2 h with a heating rate of 10 °C min^{−1} under a constant N_2 flow. A three-stage temperature-programmed thermal cracking method was used, with a uniform heating time of 1 h and a cooling time of 1 h. After the sample was cooled to room temperature, the biochar material was broken into powder using an agate mortar and pestle, and then sieved to a particle size of less than 0.1 mm.

2.2.2. Synthesis of Fe_3O_4 magnetic biochar. Magnetic *C. korshinskii* biochar was prepared using an electro-assisted modification procedure similar to a previously reported method.²¹ In brief, 3.0 g of biochar was dipped in 500 mL of a NaCl electrolyte (1.0 g L^{−1}). For electro-assisted modification of the biochar, a current density (123.91 mA cm^{−2}) was applied for 5 min using a power supply (FTS12-100 Programmable DC Power Supply, Faithtech Co., China) and iron electrodes (each electrode had dimensions of Φ 10 × 150 mm), which were placed perpendicularly in the electrolyte. The effective surface area and distance of each electrode were 32.20 cm² and 6 cm, respectively. After the electro-assisted modification process, the precipitates were collected using a magnet, washed with DI water three times, and finally dried at 60 °C under a N_2 environment.

2.2.3. Synthesis of FCB/MAC. First, 3.0 g of Fe_3O_4 magnetic biochar was dipped in 500 mL of a MgCl_2 electrolyte (5.0 g L^{−1}). A current density (123.91 mA cm^{−2}) was applied for 5 min using a power supply and aluminum electrodes. The obtained compound was aged for 24 h at 80 °C and the solution pH was adjusted to 9.0 with 0.5 M solutions of H_2SO_4 and NaOH. Then, the precipitates were collected through centrifugation, washed with DI water, and oven-dried at 60 °C under a N_2 environment.

2.3. Characterization

To investigate the surface morphology and structure of the modified biochar, scanning electron microscopy (FE-SEM, JEOL 7800F, Japan) was employed. Furthermore, the element contents were characterized by energy-dispersive X-ray spectroscopy (EDS). X-ray diffraction (XRD) analysis was performed to identify any crystalline structures in the biochar samples using a computer-controlled X-ray diffractometer (XRD-6100, Shimadzu, Japan). The BET surface area and total pore volume of the biochar samples were obtained using N_2 sorption on an ASAP 2020 Plus HD88 instrument (Micromeritics Inc.,



USA). The surface elemental composition was examined by X-ray photoelectron spectroscopy (XPS, ESCALab Xi+, Thermo Scientific, USA). The magnetization curve of the product was measured using a MPMS-SQUID-094 vibrating sample magnetometer (VSM, Quantum Design, USA) with an applied field between $-10\,000$ and $10\,000$ Oe at 298 K. Fourier transform infrared (FT-IR) spectra were recorded in the range of 4000 – 400 cm^{-1} using a FT-IR spectrometer (Nicolet iS50, Thermo Scientific, USA). Inductively coupled plasma mass spectrometry (ICP-MS, NexION 350D, PerkinElmer, USA) was used to detect the leaching concentrations of Fe, Mg, and Al from the adsorbent. The zeta potential was analyzed using a zeta potential analyzer (Zetasizer Nano ZSE, Malvin, UK).

2.4. Phosphate adsorption experiments

Adsorption experiments were performed to determine the phosphate adsorption capacity of FCB/MAC. Specifically, a stock solution of $500\text{ mg}_\text{P}\text{ L}^{-1}$ was prepared by dissolving 2.195 g of KH_2PO_4 in 1.0 L DI water. Then, the stock solution was diluted to prepare phosphate solutions with various phosphate concentrations. First, the effect of pH on phosphate adsorption was investigated in the pH range 3.0 – 11.0 with an interval of 1.0 . The pH values of the solutions were adjusted by adding 0.1 M HCl or NaOH. Then, 0.05 g of adsorbent was added to 50 mL of each phosphate solution ($50\text{ mg}_\text{P}\text{ L}^{-1}$), and the reaction vessels were agitated using a shaker operating at 120 rpm at a constant temperature of $25 \pm 1^\circ\text{C}$ for 12 h . The samples were immediately filtered using a syringe filter ($0.45\text{ }\mu\text{m}$ syringe filter, PP filter media, Whatman, UK). The concentration of phosphate remaining in each solution was measured using a spectrophotometer (UV-2600, Shimadzu, Japan) at a wavelength of 880 nm according to a standard method. The adsorption amount of phosphate and the removal efficiency (%) were calculated using the following equations:

$$q_e = \frac{(C_i - C_e)}{m} \times V \quad (1)$$

$$\text{Removal (\%)} = \frac{(C_i - C_e)}{C_i} \times 100 \quad (2)$$

Here, q_e is the amount of adsorbed phosphate per unit weight of adsorbent (mg g^{-1}), m is the mass of the adsorbent (g), V is the volume of the phosphate solution (L), and C_i and C_e are the initial and equilibrium concentrations of phosphate (mg L^{-1}), respectively.

The adsorption kinetics of phosphate on FCB/MAC were evaluated by preparing a series of solutions consisting of 0.25 g of FCB/MAC and 250 mL of phosphate solution ($\text{pH } 3.0$, $50\text{ mg}_\text{P}\text{ L}^{-1}$) in plastic bottles. The mixtures were fixed in the thermostatic oscillator at 120 rpm and $25 \pm 1^\circ\text{C}$, and 5 mL of the samples were removed from the mixtures at predetermined time intervals (5 , 15 , 30 , 60 , 120 , 240 , 360 , 480 , 600 , and 720 min). The samples were immediately filtered using a nylon membrane syringe filter with a $0.45\text{ }\mu\text{m}$ pore size. Adsorption equilibrium isotherms were obtained at $25 \pm 1^\circ\text{C}$ using 0.05 g of FCB/MAC in 50 mL of phosphate solutions ($\text{pH } 3.0$, 5 – $500\text{ mg}_\text{P}\text{ L}^{-1}$) in polyethylene centrifuge tubes. After mixing for 12 h

(sufficient to reach adsorption equilibrium), the mixtures were filtered. The amount of phosphate adsorbed on FCB/MAC under each condition was calculated using eqn (1), and the experimental results were analyzed using three kinetic models (pseudo-first-order, pseudo-second-order, and intraparticle diffusion) and five isotherm models (Langmuir, Freundlich, Langmuir–Freundlich, Redlich–Peterson, and Temkin). The expressions of the employed models are listed in Table S1.†

The effects of coexisting anions on phosphate adsorption were evaluated by mixing 0.05 g of FCB/MAC with 50 mL of phosphate solutions ($\text{pH } 3.0$, $50\text{ mg}_\text{P}\text{ L}^{-1}$) containing equal concentrations of coexisting anions (Cl^- , F^- , NO_3^- , SO_4^{2-} , and their mixture). A solution without coexisting anions was prepared as a blank. The mixtures were fixed in the thermostatic oscillator at 120 rpm and $25 \pm 1^\circ\text{C}$. After equilibration for 12 h , each mixture was filtered and the phosphate concentration was analyzed.

2.5. Phosphate desorption and reusability tests

To evaluate the recyclability of FCB/MAC, the exhausted adsorbent was collected from the solution using an ordinary magnet after the adsorption equilibrium was reached under the following conditions: adsorbent dosage = 0.05 g , initial phosphate concentration = 50 mg L^{-1} , solution pH = 3.0 , working volume = 50 mL , and contact time = 12 h . Then, the collected adsorbent was immersed in NaOH solutions with different concentrations (0.005 , 0.01 , 0.05 , 0.1 , and 0.5 M) and the mixtures were stirred at 120 rpm for 12 h to desorb phosphate from the adsorbent. Finally, the desorbed phosphate concentrations were measured and the desorption efficiency (%) was calculated using the following equation:

$$\text{Removal (\%)} = \frac{C_d \times V_d}{(C_i - V_e) \times V} \times 100 \quad (3)$$

where C_d and V_d are the desorbed phosphate concentration (mg L^{-1}) and the volume of solution (L) during the desorption test, respectively. In this study, each recyclability test consisted of five adsorption–desorption cycles.

3. Results and discussion

3.1. General characteristics of FCB/MAC

The physicochemical properties of the prepared biochar samples are presented in Table 1. Compared with raw biochar, the C and O contents of FCB/MAC decreased after Fe_3O_4 and Mg–Al LDH introduction, and the BET surface area and total pore volume of the biochar composite also decreased. In addition, the doping contents of Fe, Mg, and Al in FCB/MAC were 9.23 , 18.97 , and 7.09 wt\% , respectively, and the atomic ratio between Mg and Al was approximately 3 . Thus, the presence of magnetic Fe_3O_4 and the Mg–Al LDH were confirmed indirectly. The XRD pattern displayed sharp and symmetric principal diffraction peaks at low 2θ angles, in good agreement with those of clay minerals containing an LDH and synthetic well-crystallized hydrotalcite-like compounds (Fig. 1a). The diffraction peaks observed at $2\theta = 11.3^\circ$ (003), 23.0° (006), 35.6° (009),



and 61.2° (110) corresponded to the characteristic peaks of a Mg–Al LDH (JCPDS no. 50-1684). The interlayer spacing of the (003) plane (d_{003}) was 0.7834 nm and d_{006} was 0.3912 nm, which is consistent with the values reported in the literature.^{22–24} The peaks at $2\theta = 30.1^\circ$ (220), 43.1° (400), 53.5° (422), 57.0° (511), and 74.1° (533) were consistent with the characteristic peaks of Fe_3O_4 (JCPDS no. 19-0629). The sharpness and intensity of the peaks indicated that FCB/MAC had a highly crystalline structure. Thus, the XRD analysis confirmed the successful synthesis of FCB/MAC, which is in good agreement with the subsequent FT-IR spectral analysis.

FT-IR spectroscopy was used to further identify specific functional groups in FCB/MAC (Fig. 1b). The broad bands at 3435 and 1634 cm^{-1} are attributed to the stretching vibrations of OH groups in the brucite-like layer and the bending vibrations of water molecules in the interlayer, respectively. The band at 1384 cm^{-1} is assigned to the vibration mode of CO_3^{2-} , which suggested that CO_3^{2-} was successfully introduced into the interlayer of the Mg–Al LDH by the absorption of CO_2 during the preparation procedure.^{25,26} Moreover, the bands between 500 and 700 cm^{-1} are attributed to the characteristic lattice vibrations of MgO and Al_2O_3 . Therefore, the FT-IR spectral analysis confirmed the presence of intercalated CO_3^{2-} and water molecules in the LDH interlayer.

To determine the magnetism of FCB/MAC, the magnetic-field-dependent behavior was measured using a VSM at room temperature. As shown in Table 1, the specific saturation magnetization (M_s) of FCB/MAC was 32.9 emu g^{-1} , which is lower than the reported value of bulk Fe_3O_4 , *i.e.*, 92 emu g^{-1} .²⁷ The reduction of the M_s value of FCB/MAC is mainly attributable to the smaller size of Fe_3O_4 nanoparticles and the relatively low amount of Fe_3O_4 loaded on FCB/MAC. The magnetic remanence (M_r) of FCB/MAC was almost zero. This small M_r value indicates that FCB/MAC exhibited superparamagnetic behavior. Interestingly, the magnetic nanocomposites suspended in aqueous solution could be easily collected and separated by a nearby permanent magnet (inset digital picture, Fig. S1†).

The comprehensive elemental composition and electronic states of FCB/MAC were investigated using XPS (Fig. 2). The XPS spectra of FCB/MAC revealed that iron, magnesium, aluminum, carbon, oxygen, and chlorine were the predominant elements. The photoelectron lines at binding energy (E_B) values of approximately 711.0, 1303.3, 74.5, 284.1, 531.8, and 200.5 eV were attributed to Fe 2p, Mg 1s, Al 2p, C 1s, O 1s, and Cl 2p, respectively (Fig. 2a). Furthermore, a P 2p peak with a binding energy of 133.6 eV was clearly observed for phosphate-loaded FCB/MAC, which demonstrated the successful adsorption of phosphate on FCB/MAC. The XPS analysis further confirmed the presence of magnetite on the surface of FCB/MAC. In the Fe

2p spectrum (Fig. 2b), the peaks at 710.8 and 724.4 eV were attributed to Fe 2p_{3/2} and Fe 2p_{1/2}, respectively.^{28,29} The spin-orbital splitting of the Fe 2p peak was broad owing to the small chemical shift between Fe^{2+} and Fe^{3+} , both of which are present in Fe_3O_4 .³⁰ The absence of a satellite peak at approximately 719 eV, a characteristic of Fe_2O_3 , was indicative of the formation of a Fe_3O_4 phase in FCB/MAC, in good agreement with the XRD results.³¹

The morphological and structural features of biochar (Fig. 3a) and FCB/MAC (Fig. 3b) were characterized by SEM. The biochar surface was relatively smooth with some cracks and pores. After the two-step electro-assisted modification process, some thin layered flocculent materials and small particles were dispersed on the surface of FCB/MAC, which were presumably the Mg–Al LDH and magnetic Fe_3O_4 particles. SEM-EDS elemental mapping further confirmed the presence of Fe_3O_4 and the Mg–Al LDH on the biochar surface, as shown in Fig. 3c, as O, Cl, Fe, Mg, and Al were clearly distributed on the FCB/MAC surface.

3.2. Effect of pH on phosphate adsorption

Generally, pH is considered an important parameter that influences the adsorption properties at water–adsorbent interfaces. The phosphate adsorption capacities of FCB/MAC and the final solution pH (the pH of the solution after adsorption equilibrium) within the pH range 3.0–11.0 are shown in Fig. S2a.† It was clearly found that the adsorption of phosphate on FCB/MAC was highly dependent on the solution pH and the maximum adsorption amount of phosphate gradually decreased with the increase of the solution pH value from 3 to 11. Therefore, the ideal pH value was chosen as 3. Furthermore, to determine whether any dissolution of Fe, Mg, and Al from FCB/MAC occurred during utilization, 0.05 g of FCB/MAC was immersed in 50 mL of DI water at pH 3.0 or 11.0 for 12 h. The ICP-MS results showed that no Fe, Mg, or Al could be detected in the supernatant, indicating that these elements were strongly bound in the biochar matrix. Thus, FCB/MAC exhibited excellent stability in both acidic and basic solutions.³²

When the solution pH is lower than the point of zero charge (pH_{pzc}), the surface of the adsorbent is protonated and becomes more positively charged with decreases in pH, which would promote the adsorption of phosphate anions. However, at pH values higher than the pH_{pzc} , phosphate adsorption on the adsorbent would be inhibited owing to increased electrostatic repulsion between the adsorbent and phosphate ions. Moreover, with further increases in the solution pH, the hydroxyl ions would compete with phosphate species for the adsorption sites on the adsorbent surface, which would further reduce

Table 1 Physiochemical properties of the prepared biochar materials

Material	C (wt%)	O (wt%)	Cl (wt%)	Fe (wt%)	Mg (wt%)	Al (wt%)	Surface area ($\text{m}^2\text{ g}^{-1}$)	Total pore volume ($\text{cm}^3\text{ g}^{-1}$)	Saturated magnetization (emu g^{-1})
Raw biochar	58.43	26.67	13.68	—	1.22	—	133.49	0.09	—
FCB/MAC	36.52	17.96	10.23	9.23	18.97	7.09	27.01	0.03	32.90



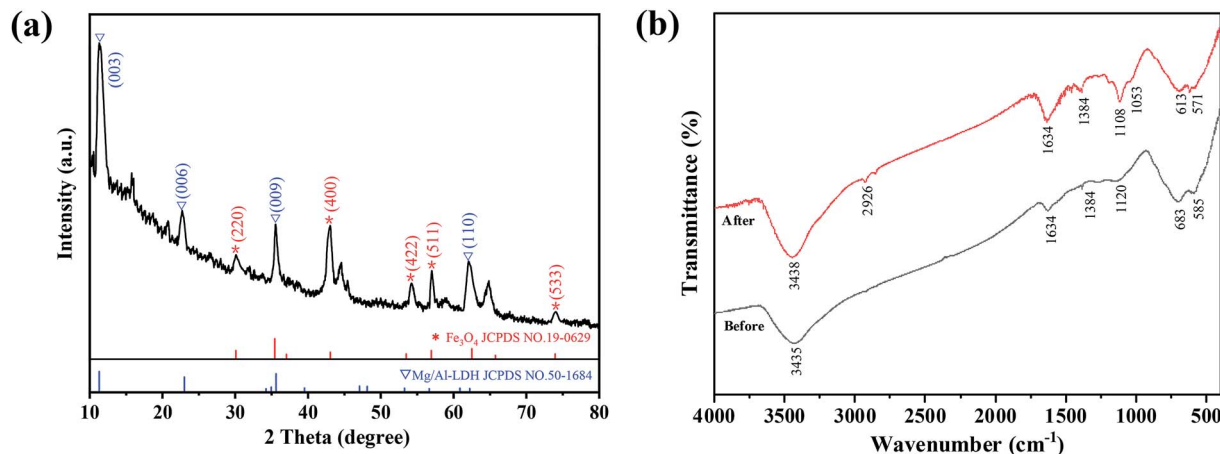


Fig. 1 (a) XRD pattern, (b) FT-IR spectra data for FCB/MAC before and after phosphate adsorption.

phosphate adsorption.^{10,11} To clarify the influence of pH on phosphate adsorption, the zeta potential values of FCB/MAC were measured at different pH values. As shown in Fig. S2b,† the pH_{pzc} of FCB/MAC is approximately 8.21. Therefore, within the pH range 3.0–7.0, FCB/MAC was protonated and positively charged, which would promote the adsorption of phosphate species $H_2PO_4^-$ or HPO_4^{2-} via electrostatic attraction, leading to a higher amount of adsorbed phosphate. However, when the pH was further increased, FCB/MAC was deprotonated and became negatively charged, which would decrease the phosphate adsorption capacity.³³ Overall, these results indicated that electrostatic attraction plays an important role in the phosphate adsorption behavior of FCB/MAC.

3.3. Effect of coexisting anions on phosphate adsorption

To investigate the effect of coexisting anions on the phosphate adsorption, adsorption experiments were conducted using phosphate solutions (pH 3, 50 mg P L⁻¹) with equal concentrations of competing anions (Fig. 4). It was obvious that the presence of Cl^- , NO_3^- , and SO_4^{2-} had a negligible influence on phosphate adsorption, as the amount of phosphate adsorbed by FCB/MAC was only reduced by 0.8, 1.3, and 0.7 mg g⁻¹,

respectively. These anions had an insignificant effect on the phosphate adsorption process because of the strong and stable interactions between the LDH and phosphate, including electrostatic attraction, anion exchange, and the formation of inner-sphere complexes with metal hydroxides.^{34,35} Compared with Cl^- , NO_3^- , and SO_4^{2-} , F^- had a more negative influence on phosphate adsorption, with the amount of phosphate adsorbed reduced by 3.9 and 5.7 mg g⁻¹ for F^- and an anion mixture, respectively. The inhibition of phosphate adsorption by F^- is likely due to strong competition between phosphate and F^- for the binding sites on the adsorbent surface. Similar results have been previously observed for other adsorbents.³² However, overall, coexisting anions have little influence on phosphate adsorption on FCB/MAC. Thus, the selectivity of this adsorbent for phosphate is high, which is important for practical applications.

3.4. Adsorption kinetics

The amounts of phosphate adsorbed on FCB/MAC as a function of contact time are shown in Fig. 5a. Clearly, phosphate adsorption on FCB/MAC occurred rapidly, reaching a phosphate adsorption capacity of 40.1 mg g⁻¹ after 2 h, which is

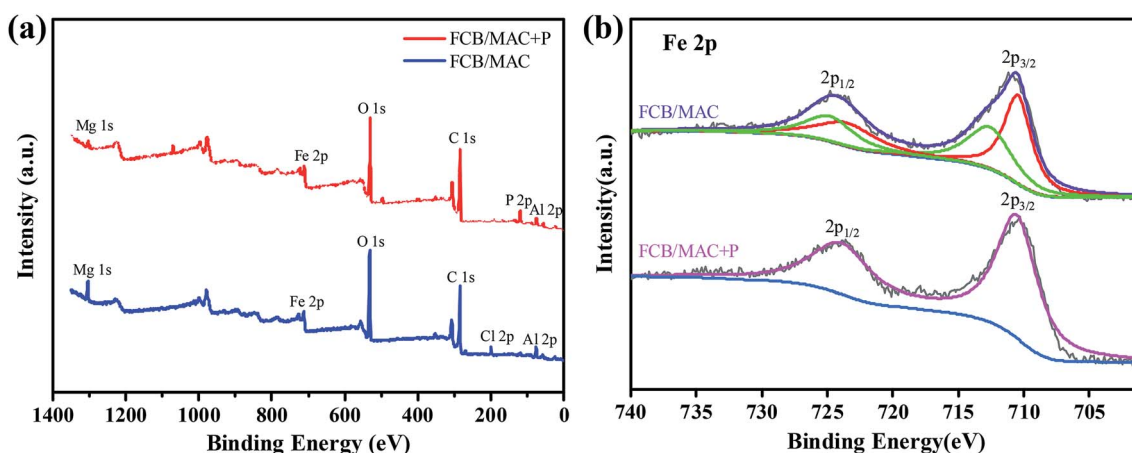


Fig. 2 The XPS spectra of FCB/MAC before and after adsorption: (a) wide spectrum, (b) Fe 2p.



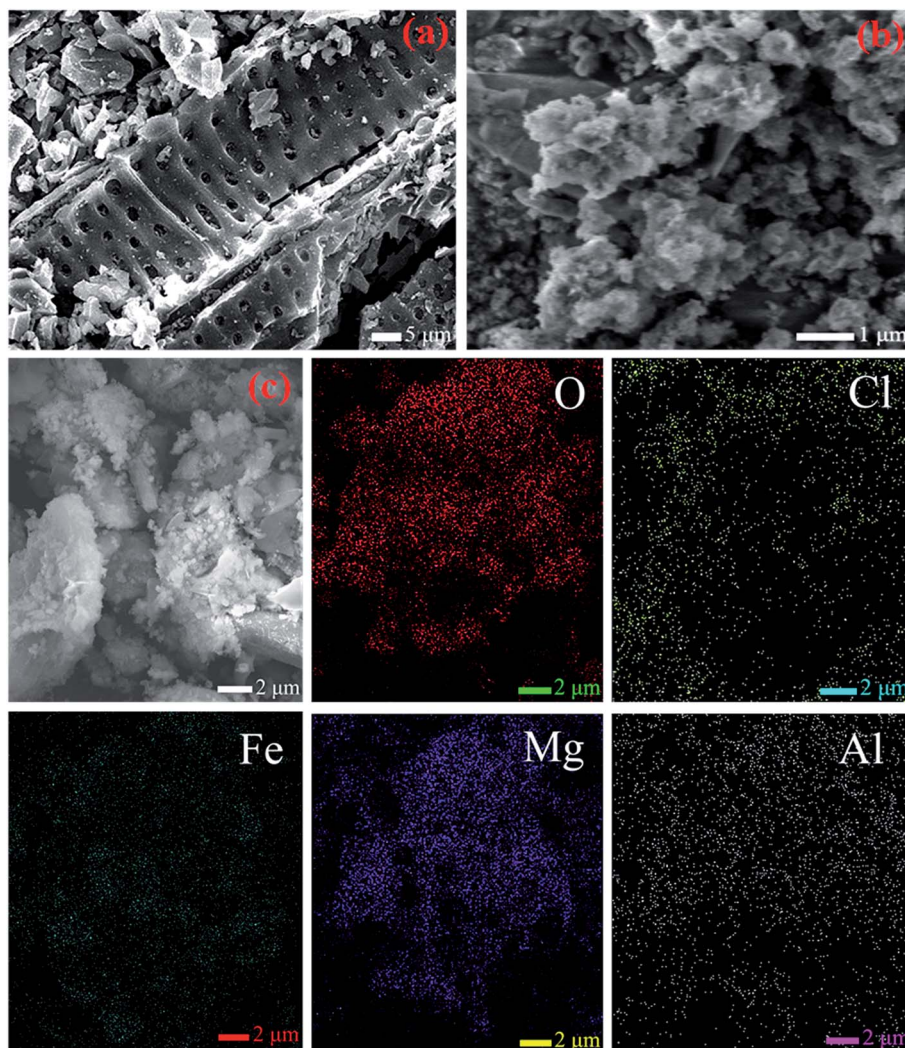


Fig. 3 SEM images of (a) raw biochar, (b) FCB/MAC and (c) the selected area of FCB/MAC for EDS analysis and EDS elemental mapping spectra of O, Cl, Fe, Mg and Al.

approximately 80% of the equilibrium adsorption capacity. The initial rapid adsorption process could be attributed to electrostatic attraction, which led to the fast transportation of phosphate from the solution onto the surface of the adsorbent. The subsequent slow adsorption process indicated that ion exchange and ligand exchange were the dominant mechanisms of phosphate adsorption.^{1,36}

The kinetic data for phosphate adsorption were analyzed using pseudo-first-order, pseudo-second-order, and intraparticle diffusion models. The fitting curves for the pseudo-first-order and pseudo-second-order models are presented in Fig. 5a and the kinetic parameters obtained using these two kinetic models are summarized in Table 2. It was found that the correlation coefficient (R^2) of the pseudo-second-order kinetic model was higher than that of the pseudo-first-order kinetic model, suggesting that the phosphate adsorption process was better described by the pseudo-second-order kinetic model.

More importantly, as clearly shown in Fig. 5b, the adsorption kinetics (plots of q_e versus $t^{1/2}$) exhibited multilinearity. The first

region is sharper and quicker, which can be ascribed to the presence of many available adsorption sites in the adsorbent and a relatively high concentration of phosphate in the solution.³⁷ Then, the second region represents phosphate molecules diffusing into the pores of the adsorbent, suggesting that intraparticle diffusion is the rate-limiting step of this stage. Finally, the third region can be attributed to the equilibrium stage, where intraparticle diffusion becomes slow owing to the low phosphate concentration in the solution.³⁸ In addition, the multilinear plots indicate that two or more steps (multistep adsorption) occur during the phosphate adsorption process on FCB/MAC. The kinetic parameters obtained from the kinetic models (Table 2) show that the intraparticle diffusion model fits the experimental data well ($R^2 = 0.99$). This finding indicates that intraparticle diffusion is involved in the adsorption process but other mechanisms also play an important role. Therefore, the kinetic and intraparticle diffusion analyses confirmed that the overall behavior of the phosphate adsorption process on FCB/MAC is likely controlled by multiple parallel processes,



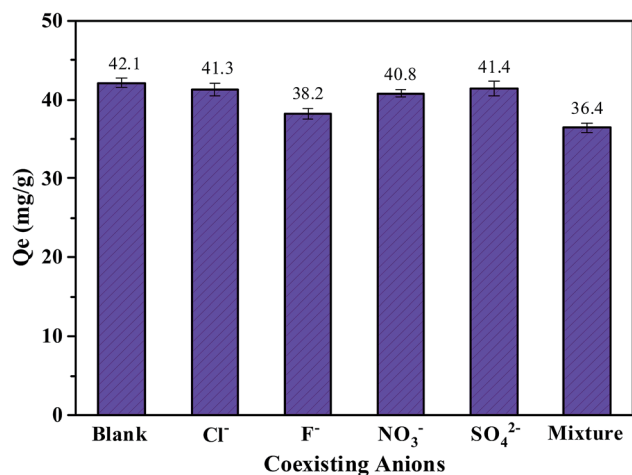


Fig. 4 Effect of coexisting anions on the phosphate adsorption by FCB/MAC. Adsorption conditions: initial phosphate concentration, 50 mg L⁻¹; solution pH, 3.0; temperature, 25 °C; FCB/MAC dosage, 0.05 g; working volume, 50 mL; contact time, 12 h.

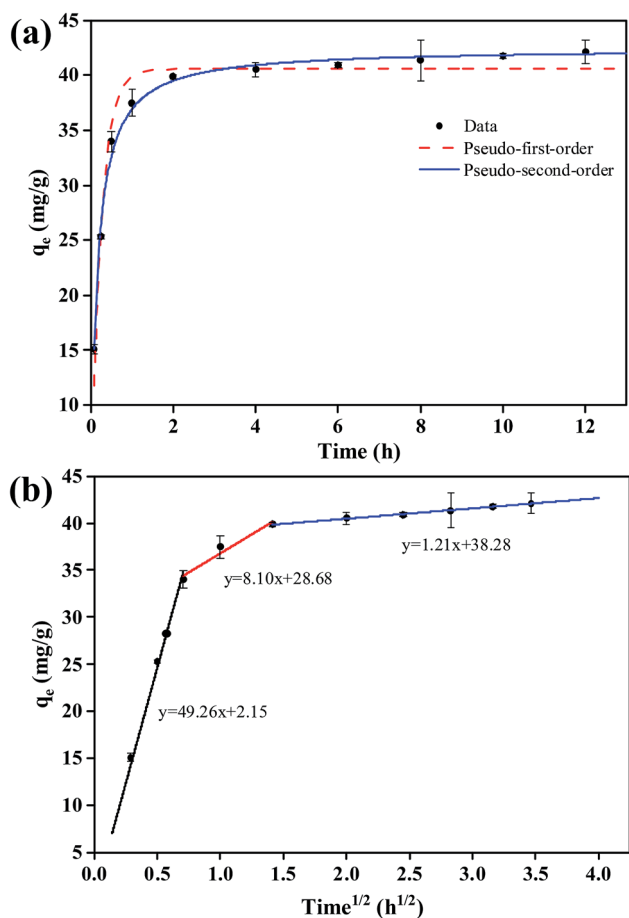


Fig. 5 Kinetics of phosphate adsorption on FCB/MAC: (a) experimental data and fitting for pseudo-first-order and pseudo-second-order models and (b) intraparticle diffusion model. Adsorption conditions: initial phosphate concentration, 50 mg L⁻¹; solution pH, 3.0; temperature, 25 °C; FCB/MAC dosage, 0.25 g; working volume, 250 mL; contact time, 12 h.

involving rapid external surface adsorption and diffusion into the interior of the prepared biochar.³⁹

3.5. Adsorption isotherms

The adsorption isotherms for phosphate adsorption on FCB/MAC are presented in Fig. 6. As shown, with an increase of the initial phosphate concentration, the adsorption capacity of FCB/MAC gradually increases. The related parameters calculated from the five models are listed in Table 2. Clearly, almost all the isotherm models reproduced the adsorption data well, except the Freundlich equation. However, the Langmuir–Freundlich (highest R^2 value of 0.9925) and Redlich–Peterson models matched the experimental data better than the other models, suggesting that the interaction between phosphate and FCB/MAC could be affected by both the Langmuir and Freundlich processes. This result is consistent with the kinetics study and suggests that the adsorption of phosphate on FCB/MAC is controlled by multiple processes, involving simultaneous physical and chemical adsorption.^{40,41}

Herein, the adsorption of phosphate on FCB/MAC occurs by ion exchange with both the intercalated anions of the Mg–Al LDH and ligand exchange reactions with the surface groups. Typically, there are three steps during the phosphate adsorption process on the Mg–Al LDH: (1) external mass transfer between the external surface of the Mg–Al LDH and the surrounding fluid phase; (2) intraparticle transport within the LDH; and (3) chemisorption.⁴² It has been suggested that lower molecular weight phosphates can easily enter the mesoporous Mg–Al LDH and undergo ligand exchange reactions with the surface groups.⁴³ The synergistic interactions of the Mg–Al LDH with phosphate lead to the highly efficient adsorption of phosphate on FCB/MAC. Notably, the theoretical maximum adsorption capacity (q_m) of FCB/MAC was calculated to be 252.88 mg g⁻¹ at 25 ± 1 °C using the Langmuir–Freundlich isotherm, which far exceeds the adsorption capacity of a pure Fe₃O₄@Mg–Al LDH, as reported by Yan *et al.*⁴⁴ These results clearly indicated that FCB/MAC is a promising adsorbent for phosphate adsorption. The significant increase of phosphate adsorption achieved by grafting an LDH on a Fe₃O₄ magnetic biochar compared with magnetic biochars modified with single metals suggested that the combination of metal modification and the positively charged Mg–Al LDH provides considerably enhanced anion adsorption. For comparison, Table 3 lists the phosphate adsorption capacities of other adsorbents, such as magnetite-particle-grafted orange peel biochar (1.24 mg g⁻¹),⁷ MgO-impregnated magnetic biochar (121.25 mg g⁻¹),⁸ La(OH)₃-modified magnetic pineapple biochar (101.16 mg g⁻¹),⁹ and MgFe₂O₄/biochar magnetic composite (159.24 mg g⁻¹).¹⁰ Obviously, FCB/MAC is a better phosphate adsorbent than these previously reported systems.

3.6. XPS analysis

To further explore the sorption mechanism of phosphate on the FCB/MAC adsorbent, the adsorbent before and after phosphate adsorption was subjected to XPS analysis. Fig. 7 shows the P 2p, O 1s, Mg 1s, and Al 2p XPS spectra. Based on the binding



Table 2 Best-fit parameter values from model simulations of phosphate adsorption kinetics and isotherms

	Parameter 1	Parameter 2	Parameter 3	R^2
Adsorption kinetics				
Pseudo-first-order	$k_1 = 4.1160 \text{ (h}^{-1}\text{)}$	$q_e = 40.5612 \text{ (mg g}^{-1}\text{)}$		$R^2 = 0.9615$
Pseudo-second-order	$k_2 = 0.1569 \text{ (g mg}^{-1} \text{ h}^{-1}\text{)}$	$q_e = 42.4511 \text{ (mg g}^{-1}\text{)}$		$R^2 = 0.9932$
Intraparticle diffusion	$k_{i1} = 49.2608 \text{ (mg g}^{-1} \text{ h}^{1/2}\text{)}$	$C_1 = 2.1493 \text{ (mg g}^{-1}\text{)}$		$R^2 (k_{i1}) = 0.9785$
	$k_{i2} = 8.1021 \text{ (mg g}^{-1} \text{ h}^{1/2}\text{)}$	$C_2 = 28.6793 \text{ (mg g}^{-1}\text{)}$		$R^2 (k_{i2}) = 0.9149$
	$k_{i3} = 1.0951 \text{ (mg g}^{-1} \text{ h}^{1/2}\text{)}$	$C_3 = 38.2825 \text{ (mg g}^{-1}\text{)}$		$R^2 (k_{i3}) = 0.9967$
Adsorption isotherms				
Langmuir	$K_L = 0.0464 \text{ (L mg}^{-1}\text{)}$	$Q_m = 248.6390 \text{ (mg g}^{-1}\text{)}$		$R^2 = 0.9916$
Freundlich	$K_F = 49.4181 \text{ (mg g}^{-1}\text{)}$	$1/n = 0.2921$		$R^2 = 0.8948$
Langmuir–Freundlich	$K_{LF} = 0.0537 \text{ (L mg}^{-1}\text{)}$	$Q_m = 252.8803 \text{ (mg g}^{-1}\text{)}$	$1/n = 0.9368$	$R^2 = 0.9925$
Redlich–Peterson	$K_R = 12.1571 \text{ (L mg}^{-1}\text{)}$	$a = 0.0375 \text{ (L mg}^{-1}\text{)}$	$1/n = 0.9566$	$R^2 = 0.9924$
Temkin	$b = 0.0964 \text{ (J g mg}^{-1}\text{)}$	$a = 1.8360 \text{ (L mg}^{-1}\text{)}$		$R^2 = 0.9173$

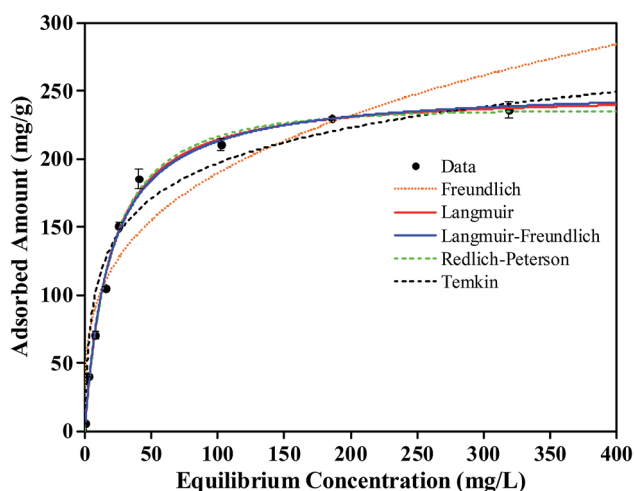


Fig. 6 Adsorption isotherm data and modeling for phosphate on the FCB/MAC. Symbols are experimental data, and lines are model results. Adsorption conditions: initial phosphate concentration range, 5–500 mg L⁻¹; solution pH, 3.0; temperature, 25 °C; FCB/MAC dosage, 0.05 g; working volume, 50 mL; contact time, 12 h.

energies of various phosphorus species, the P 2p XPS spectra (Fig. 7a) could be divided into two peaks corresponding to M–P (phosphorus bonded to metal) and M–O–P (phosphorus bonded to metal oxide), indicating a strong affinity between phosphate and FCB/MAC. For the pristine adsorbent, the O 1s XPS spectrum (Fig. 7b) could be fitted to three peaks, namely, O²⁻ at 529.5 eV, OH⁻ at 530.4 eV, and CO₃²⁻ at 531.4 eV.^{16,45,46} After phosphate adsorption, the area ratio of O²⁻ decreased from 26.40% to 26.05%, likely owing to the group exchange of M–O (oxygen bonded to metal) with phosphate. The area ratio of CO₃²⁻ also decreased from 37.89% to 31.5%, likely owing to the exchange of phosphate with CO₃²⁻. Furthermore, the area ratio of OH⁻ increased from 35.71% to 42.45%, corresponding to the one or two P–OH groups contributed by different H₂PO₄⁻/HPO₄²⁻ species.¹⁷ Thus, it is believed that the metal hydroxyl sites are capable of ligand exchange with the target phosphates. The Mg 1s and Al 2p XPS spectra of FCB/MAC are displayed in Fig. 7c and d, respectively. The binding energy of Mg 1s changed from 1304.3 to 1303.6 eV, whereas that of Al 2p changed from 74.9 to 75.7 eV, illustrating that the Mg and Al metal hydroxides participated in the adsorption process.¹⁶ Furthermore, the Fe 2p

Table 3 Comparison of phosphate adsorption capacities with other reported adsorbents^a

Adsorbent	IC (mg L ⁻¹)	pH	<i>t</i> (h)	RT (°C)	Isotherm	AM	AC (mg g ⁻¹)	References
Magnetite particles grafted orange peel biochar	0–12	NR	24	25	L	NR	1.24	7
MgO-impregnated magnetic biochar	5–500	4.0	12	23	L	EA and IC	121.25	8
La(OH) ₃ -modified magnetic pineapple biochar	100–400	NR	24	30	L	EA, LE and IC	101.16	9
MgFe ₂ O ₄ /biochar magnetic composites	2–163	3.0	12	20	S	IC	159.24	10
La/Fe ₃ O ₄ -biochar	75	6.1	15	25	D-R	EA and IC	25.00	16
Ce/Fe ₃ O ₄ -biochar	75	6.1	15	25	F	EA and IC	18.75	
Ferric oxides loaded cotton stalks biochar	7	NR	24	25	NR	AE and EA	0.31	47
Fe ₃ O ₄ @Mg–Al layered double hydroxide	13	3.0	1	25	L	AE, LE and EA	10.30	44
FCB/MAC	5–500	3.0	12	25	L-F	AE, EA, and LE	252.88	This study

^a IC, initial concentration; RT, removal temperature; L-F, Langmuir–Freundlich model; D-R, Dubinin–Radushkevich model; L, Langmuir model; F, Freundlich model; S, Sips model; AM, adsorption mechanisms; IC, inner-sphere complexation; AE, anion exchange; EA, electrostatic attraction; LE, ligand exchange; AC, adsorption capacity; NR, no report.



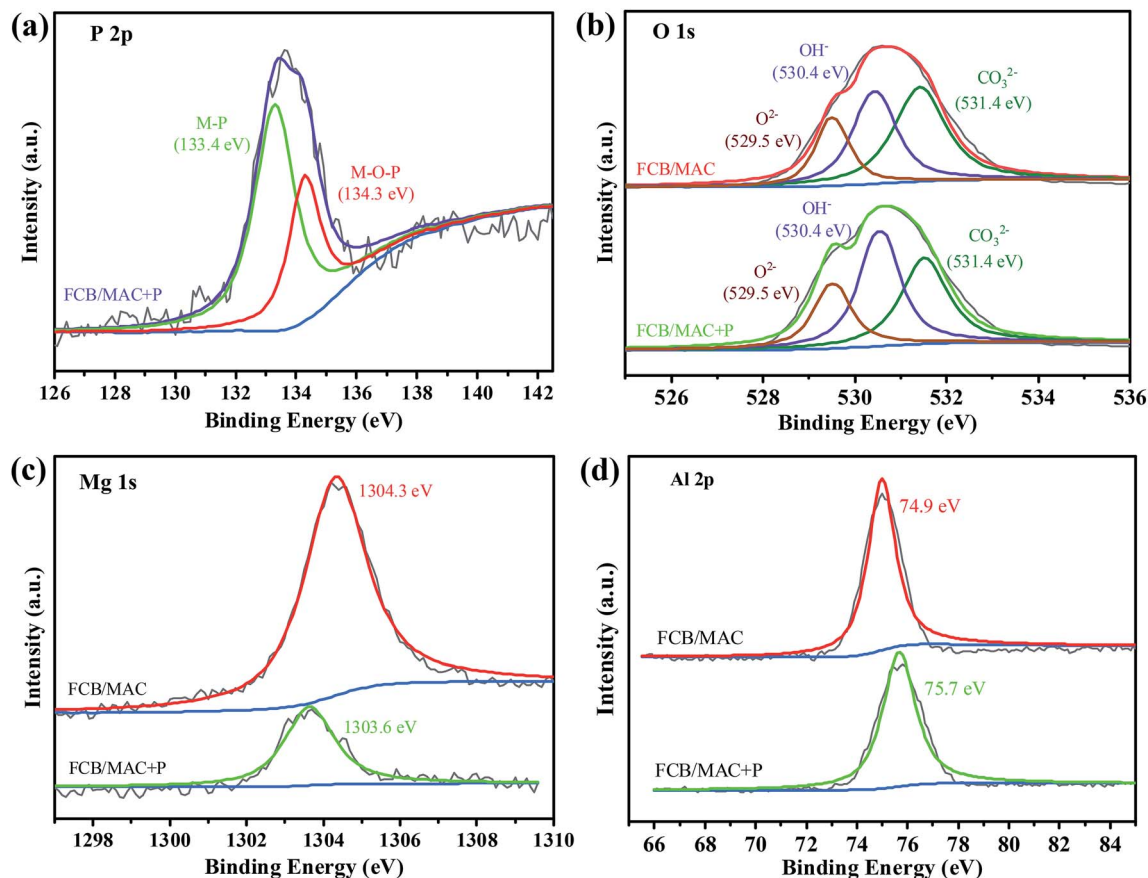


Fig. 7 (a) The XPS spectra of P 2p. The XPS analysis of the O 1s (b), Mg 1s (c), Al 2p (d) before and after phosphate adsorption.

XPS spectra (Fig. 2b) of FCB/MAC before and after adsorption were similar, indicating that the iron oxide did not participate in the adsorption process. These analyses are consistent with anion exchange and ligand exchange being involved in the phosphate adsorption process.

3.7. Adsorbent regeneration and phosphate readsorption

The stability and the recyclability of an adsorbent are vital for its industrial application. As mentioned in Section 3.2, the

phosphate adsorption capacity of FCB/MAC decreased drastically as the solution pH increased. This result indicated that alkaline conditions ($\text{pH} > \text{pH}_{\text{pzc}}$) can facilitate the desorption of phosphate from exhausted adsorbents. Thus, the desorption of phosphate from phosphate-loaded FCB/MAC was performed at different NaOH concentrations (0.005–0.5 M), and the results are shown in Fig. 8a. The desorption efficiency increased gradually from 19.95% to 81.76% with the increase of the NaOH concentration from 0.005 to 0.1 M. However, further increases

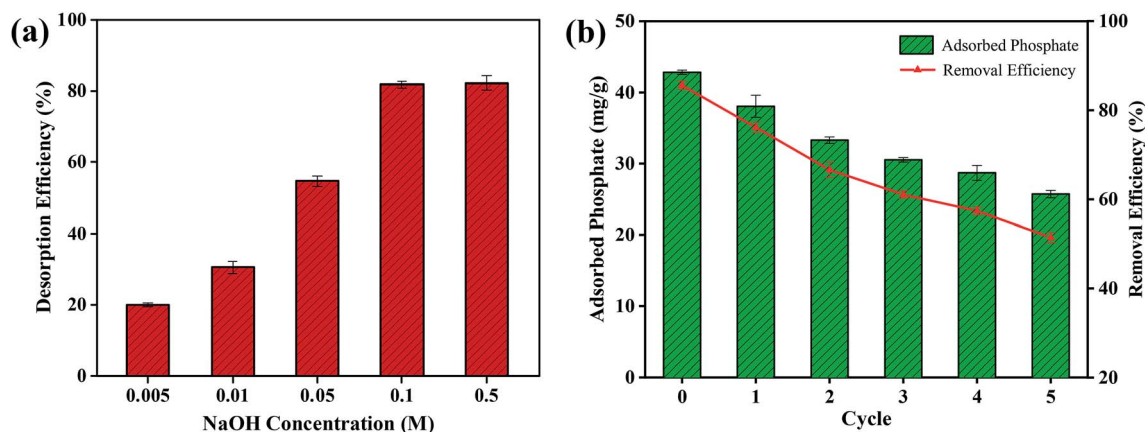


Fig. 8 (a) Desorption performance at different NaOH concentrations. (b) Cyclic stability of FCB/MAC regenerated by 0.1 M NaOH.



in the NaOH concentration had no significant effect on the desorption efficiency. Therefore, 0.1 M NaOH was chosen as the optimal condition for the regeneration process. As shown in Fig. 8b, even though the phosphate adsorption performance of FCB/MAC gradually decreased with subsequent adsorption-desorption cycles, a certain adsorption capacity (approximately 25.71 mg g⁻¹ with 51.43% removal efficiency) was still maintained after five cycles, which is better than the performance of other magnetic adsorbents. Thus, the recyclability test demonstrated that FCB/MAC could be effectively separated without any weight loss using a magnetic field and easily reused by applying a NaOH solution as an eluent for efficient phosphate removal. Subsequently, as a suggestion for recycling of the exhausted material, the exhausted FCB/MAC can be acidified to obtain the raw biochar. The raw biochar can again be subjected to the two-step electro-assisted modification process to produce FCB/MAC, thus achieving recycling of the exhausted material.

4. Conclusions

FCB/MAC was successfully prepared by a two-step electro-assisted modification process for the first time. This process enriches the technology that is available for modifying biochar. FCB/MAC provides an ideal combination of the adsorption features of biochar with the magnetic properties of Fe₃O₄ and the adsorption properties of Mg–Al LDH. FCB/MAC showed a higher phosphate adsorption capacity (252.88 mg g⁻¹) than most previously reported adsorbents. Furthermore, FCB/MAC showed good selectivity, as the presence of coexisting anions, including Cl⁻, F⁻, NO₃⁻, and SO₄²⁻, had little influence on the removal of phosphate. The adsorption kinetics of phosphate were well represented by the pseudo-second-order and intra-particle diffusion models and the adsorption isotherms were fitted best by the Langmuir–Freundlich model. The phosphate adsorption mechanism involved electrostatic attraction, ligand exchange with surface groups, and anion exchange with the interlayer anions of FCB/MAC. Phosphate-loaded FCB/MAC exhibited excellent magnetic recovery and phosphate desorption. Therefore, FCB/MAC is an optimal reusable hybrid adsorbent and has considerable potential for phosphate removal in practical applications.

Conflicts of interest

There are no conflicts to declare.

Acknowledgements

This work was supported by the National Key Research and Development Plan of China (2016YFC0501702, 2017YFC0504504), the National Natural Science Foundation of China (41571225), and Science and Technology Service Network Initiative of the Chinese Academy of Sciences (KFJ-STS-ZDTP-012). We also thank the instrument analysis center of Xi'an Jiaotong University (XJTU, China).

References

- 1 J. Lalley, C. Han, X. Li, D. D. Dionysiou and M. N. Nadagouda, *Chem. Eng. J.*, 2016, **284**, 1386–1396.
- 2 M. I. Inyang, B. Gao, Y. Yao, Y. Xue, A. Zimmerman, A. Mosa, P. Pullammanappallil, Y. S. OK and X. Cao, *Crit. Rev. Environ. Sci. Technol.*, 2016, **46**, 406–433.
- 3 S. B. Liu, X. F. Tan, Y. G. Liu, Y. L. Gu, G. M. Zeng, X. J. Hu, H. Wang, L. Zhou, L. H. Jiang and B. B. Zhao, *RSC Adv.*, 2016, **6**, 5871–5880.
- 4 Y. Yao, B. Gao, J. Chen, M. Zhang, M. Inyang, Y. Li, A. Alva and L. Yang, *Bioresour. Technol.*, 2013, **138**, 8–13.
- 5 S. Wan, S. Wang, Y. Li and B. Gao, *J. Ind. Eng. Chem.*, 2017, **47**, 246–253.
- 6 B. Micháleková-Richveisová, V. Frišták, M. Pipiška, L. Ďuriška, E. Moreno-Jimenez and G. Soja, *Environ. Sci. Pollut. Res.*, 2016, **24**, 463–475.
- 7 B. Chen, Z. Chen and S. Lv, *Bioresour. Technol.*, 2011, **102**, 716–723.
- 8 R. Li, J. J. Wang, B. Zhou, M. K. Awasthi, A. Ali, Z. Zhang, A. H. Lahori and A. Mahar, *Bioresour. Technol.*, 2016, **215**, 209–214.
- 9 T. Liao, T. Li, X. Su, X. Yu, H. Song, Y. Zhu and Y. Zhang, *Bioresour. Technol.*, 2018, **263**, 207–213.
- 10 K. W. Jung, S. Lee and Y. J. Lee, *Bioresour. Technol.*, 2017, **245**, 751–759.
- 11 L. Wang, J. Wang, C. He, W. Lyu, W. Zhang, W. Yan and L. Yang, *Colloids Surf., A*, 2019, **561**, 236–243.
- 12 M. K. R. Reddy, Z. P. Xu, G. Q. Lu and C. J. Diniz da Costa, *Ind. Eng. Chem. Res.*, 2006, **45**, 7504–7509.
- 13 K. H. Goh, T. T. Lim and Z. Dong, *Water Res.*, 2008, **42**, 0–1368.
- 14 H. Pang, Y. Wu, S. Huang, C. Ding, S. Li, X. Wang, S. Yu, Z. Chen, G. Song and X. Wang, *Inorg. Chem. Front.*, 2018, **5**, 2657.
- 15 S. Yu, Y. Liu, Y. Ai, X. Wang, R. Zhang, Z. Chen, Z. Chen, G. Zhao and X. Wang, *Environ. Pollut.*, 2018, **242**, 1–11.
- 16 S. Yu, X. Wang, Y. Liu, Z. Chen, Y. Wu, Y. Liu, H. Pang, G. Song, J. Chen and X. Wang, *Chem. Eng. J.*, 2019, **365**, 51–59.
- 17 Q. Zhang, J. Teng, G. Zou, Q. Peng, Q. Du, T. Jiao and J. Xiang, *Nanoscale*, 2016, **8**, 7085.
- 18 G. Gollavelli, C. C. Chang and Y. C. Ling, *ACS Sustainable Chem. Eng.*, 2013, **1**, 462–472.
- 19 S. Nethaji, A. Sivasamy and A. B. Mandal, *Bioresour. Technol.*, 2013, **134**, 94–100.
- 20 S. Yu, L. Yin, H. Pang, Y. Wu, X. Wang, P. Zhang, B. Hu, Z. Chen and X. Wang, *Chem. Eng. J.*, 2018, **352**, 360–370.
- 21 K. W. Jung, M. J. Hwang, T. U. Jeong and K. H. Ahn, *Bioresour. Technol.*, 2015, **191**, 342–345.
- 22 F. Cavani, F. Trifiro and A. Vaccari, *Catal. Today*, 1991, **11**, 173–301.
- 23 Y. Chen, F. Li, S. Zhou, J. Wei, Y. Dai and Y. Chen, *J. Solid State Chem.*, 2010, **183**, 2222–2226.
- 24 S. Özgümüş, M. K. Gök, A. Bal and G. Güçlü, *Chem. Eng. J.*, 2013, **223**, 277–286.



- 25 Y. Li, B. Gao, T. Wu, D. Sun, X. Li, B. Wang and F. Lu, *Water Res.*, 2009, **43**, 3067–3075.
- 26 L. Li, R. Li, S. Gai, F. He and P. Yang, *J. Mater. Chem. A*, 2014, **2**, 8758–8765.
- 27 X. Peng, Z. Luan and H. Zhang, *Chemosphere*, 2006, **63**, 300–306.
- 28 F. R. Costa, A. Leuteritz, U. Wagenknecht, M. A. D. Landwehr, D. Jehnichen, L. Haeussler and G. Heinrich, *Appl. Clay Sci.*, 2009, **44**, 7–14.
- 29 X. Lu, Y. Yu, L. Chen, H. Mao, H. Gao, J. Wang and W. Yen, *Nanotechnology*, 2005, **16**, 1660–1665.
- 30 S. Shanmugam, T. Nakanishi and T. Osaka, *J. Electrochem. Soc.*, 2009, **156**, K121–K127.
- 31 D. Zhang, Z. Liu, S. Han, C. Li, B. Lei, M. P. Stewart, J. M. Tour and C. Zhou, *Nano Lett.*, 2004, **4**, 2151–2155.
- 32 R. Li, J. J. Wang, B. Zhou, M. K. Awasthi, A. Ali, Z. Zhang, L. A. Gaston, A. H. Lahori and A. Mahar, *Sci. Total Environ.*, 2016, **559**, 121–129.
- 33 B. Wu, L. Fang, J. D. Fortner, X. Guan and I. M. C. Lo, *Water Res.*, 2017, **126**, 179–188.
- 34 F. Hu, M. Wang, X. Peng, F. Qiu, T. Zhang, H. Dai, Z. Liu and Z. Cao, *Colloids Surf., A*, 2018, **555**, 314–323.
- 35 J. Lu, H. Liu, X. Zhao, W. Jefferson, F. Cheng and J. Qu, *Colloids Surf., A*, 2014, **455**, 11–18.
- 36 J. Lü, H. Liu, R. Liu, X. Zhao, L. Sun and J. Qu, *Powder Technol.*, 2013, **233**, 146–154.
- 37 M. Ghaedi, A. Hassanzadeh and S. N. Kokhdan, *J. Chem. Eng. Data*, 2011, **56**, 2511–2520.
- 38 S. Karaca, A. Gürses, M. Ejder and M. Açıkyıldız, *J. Colloid Interface Sci.*, 2004, **277**, 257–263.
- 39 G. Crini, H. N. Peindy, F. Gimbert and C. Robert, *Sep. Purif. Technol.*, 2007, **53**, 97–110.
- 40 C. Fang, T. Zhang, P. Li, R. F. Jiang and Y. C. Wang, *Int. J. Environ. Res. Public Health*, 2014, **11**, 9217–9237.
- 41 Y. Yao, B. Gao, M. Inyang, A. R. Zimmerman, X. Cao, P. Pullammanappallil and L. Yang, *J. Hazard. Mater.*, 2011, **190**, 501–507.
- 42 M. S. Gasser, H. T. Mohsen and H. F. Aly, *Colloids Surf., A*, 2008, **331**, 195–201.
- 43 Z. P. Xu and G. Q. Lu, *Chem. Mater.*, 2005, **17**, 1055–1062.
- 44 L. G. Yan, K. Yang, R. R. Shan, T. Yan, J. Wei, S. J. Yu, H. Q. Yu and B. Du, *J. Colloid Interface Sci.*, 2015, **448**, 508–516.
- 45 J. Chen, Y. Song, D. Shan and E. Han, *Corros. Sci.*, 2012, **63**, 148–158.
- 46 Q. Zhang, S. Bolisetty, Y. Cao, S. Handschin, J. Adamcik, Q. Peng and R. Mezzenga, *Angew. Chem., Int. Ed.*, 2019, **58**, 6012–6016.
- 47 J. Ren, N. Li, L. Li, J. K. An, L. Zhao and N. Q. Ren, *Bioresour. Technol.*, 2015, **178**, 119–125.

