

Root hydrotropism is controlled via a cortex-specific growth mechanism

Dietrich, Daniela; Dyson, Rosemary

DOI:

[10.1038/nplants.2017.57](https://doi.org/10.1038/nplants.2017.57)

License:

None: All rights reserved

Document Version

Peer reviewed version

Citation for published version (Harvard):

Dietrich, D & Dyson, R 2017, 'Root hydrotropism is controlled via a cortex-specific growth mechanism', *Nature Plants*, vol. 3, 17057. <https://doi.org/10.1038/nplants.2017.57>

[Link to publication on Research at Birmingham portal](#)

Publisher Rights Statement:

Final Version of Record available at: <http://dx.doi.org/10.1038/nplants.2017.57>
Eligibility for repository: Checked on 7/4/2017

General rights

Unless a licence is specified above, all rights (including copyright and moral rights) in this document are retained by the authors and/or the copyright holders. The express permission of the copyright holder must be obtained for any use of this material other than for purposes permitted by law.

- Users may freely distribute the URL that is used to identify this publication.
- Users may download and/or print one copy of the publication from the University of Birmingham research portal for the purpose of private study or non-commercial research.
- User may use extracts from the document in line with the concept of 'fair dealing' under the Copyright, Designs and Patents Act 1988 (?)
- Users may not further distribute the material nor use it for the purposes of commercial gain.

Where a licence is displayed above, please note the terms and conditions of the licence govern your use of this document.

When citing, please reference the published version.

Take down policy

While the University of Birmingham exercises care and attention in making items available there are rare occasions when an item has been uploaded in error or has been deemed to be commercially or otherwise sensitive.

If you believe that this is the case for this document, please contact UBIRA@lists.bham.ac.uk providing details and we will remove access to the work immediately and investigate.

Root hydrotropism is controlled via a cortex-specific growth mechanism

Daniela Dietrich^{1,2,§}, Lei Pang^{3,§}, Akie Kobayashi^{3§}, John A. Fozard^{1,†}, Véronique Boudolf^{4,5}, Rahul Bhosale^{1,2,4,5}, Regina Antoni^{1,†}, Tuan Nguyen^{1,6}, Sotaro Hiratsuka³, Nobuharu Fujii³, Yutaka Miyazawa⁷, Tae-Woong Bae³, Darren M. Wells^{1,2}, Markus R. Owen^{1,8}, Leah R. Band^{1,8}, Rosemary J. Dyson⁹, Oliver E. Jensen^{1,10}, John R. King^{1,8}, Saoirse R. Tracy^{1,11,†}, Craig J. Sturrock^{1,11}, Sacha J. Mooney^{1,11}, Jeremy A. Roberts^{1,2†}, Rishikesh P. Bhalerao^{12,13}, José R. Dinneny¹⁴, Pedro L. Rodriguez¹⁵, Akira Nagatani¹⁶, Yoichiro Hosokawa¹⁷, Tobias I. Baskin^{1,18}, Tony P. Pridmore^{1,6}, Lieven De Veylder^{4,5}, Hideyuki Takahashi^{3#} and Malcolm J. Bennett^{1,2#*}

- ¹Centre for Plant Integrative Biology, University of Nottingham, Nottingham, LE12 5RD, UK
²Plant & Crop Sciences, School of Biosciences, University of Nottingham, Nottingham, LE12 5RD, UK
³Graduate School of Life Sciences, Tohoku University, Sendai 980-8577, Japan
⁴Ghent University, Department of Plant Biotechnology and Bioinformatics, (Technologiepark 927), 9052 Ghent, Belgium
⁵VIB Center for Plant Systems Biology, (Technologiepark 927), 9052 Ghent, Belgium
⁶School of Computer Science, University of Nottingham, Nottingham, NG8 1BB, UK
⁷Faculty of Science, Yamagata University, Yamagata 990-8560, Japan
⁸Centre for Mathematical Medicine & Biology, University of Nottingham, Nottingham, NG7 2RD, UK
⁹School of Mathematics, University of Birmingham, Birmingham, B15 2TT, UK
¹⁰School of Mathematics, University of Manchester, Oxford Road, Manchester, M13 9PL, UK
¹¹Agricultural and Environmental Sciences, School of Biosciences, University of Nottingham, Nottingham, LE12 5RD, UK
¹²Department of Forest Genetics and Plant Physiology, SLU, S-901 83 Umea, Sweden
¹³College of Science, KSU, Riyadh, Saudi Arabia
¹⁴Carnegie Institution for Science, Department of Plant Biology, 260 Panama Street, Stanford, CA 94305, USA
¹⁵Instituto de Biología Molecular y Celular de Plantas, Consejo Superior de Investigaciones Científicas-Universidad Politécnica de Valencia, ES-46022 Valencia, Spain
¹⁶Graduate School of Science, Kyoto University, Kyoto 606-8502, Japan
¹⁷Graduate School of Materials Science, Nara Institute of Science & Technology, Ikoma 630-0101, Japan
¹⁸Biology Department, University of Massachusetts, Amherst, Massachusetts, USA
† Present address: Computational and Systems Biology, John Innes Centre, Norwich NR4 7UH, UK (J.A.F.); Centre Nacional d'Anàlisi Genòmica (CNAG-CRG) 08028 Barcelona, Spain (R.A.); School of Agriculture and Food Science, University College Dublin, Belfield Campus, Dublin 4, Ireland (S.R.T.); School of Biological and Marine Sciences, University of Plymouth, Plymouth PL4 8AA (J.A.R.)
§ Denotes equal contribution of authors
Denotes co-corresponding authorship
* e-mail: malcolm.bennett@nottingham.ac.uk (M.J.B.); hideyuki@ige.tohoku.ac.jp (H.T.)

Plants can acclimate by using tropisms to link the direction of growth to environmental conditions. Hydrotropism allows roots to forage for water, a process known to depend on abscisic acid (ABA) but whose molecular and cellular basis remains unclear. Here, we show that hydrotropism still occurs in roots after laser ablation removed the meristem and root cap. Additionally, targeted expression studies reveal that hydrotropism depends on the ABA signalling kinase, SnRK2.2, and the hydrotropism-specific MIZ1, both acting specifically in elongation zone cortical cells. Conversely, hydrotropism, but not gravitropism, is inhibited by preventing differential cell-length increases in the cortex, but not in other cell types. We conclude that root tropic responses to gravity and water are driven by distinct tissue-based mechanisms. In addition, unlike its role in root gravitropism, the elongation zone performs a dual function during a hydrotropic response, both sensing a water potential gradient and subsequently undergoing differential growth.

Tropic responses are differential growth mechanisms that roots use to explore the surrounding soil efficiently. In general, a tropic response can be divided into several steps, comprising perception, signal transduction, and differential growth. All of these steps have been well characterized for gravitropism, where gravity sensing cells in the columella of the root cap generate a lateral auxin gradient, whilst adjacent lateral root cap cells transport auxin to epidermal cells in the elongation zone, thereby triggering the differential growth that drives bending¹⁻⁴. In gravi-stimulated roots, the lateral auxin gradient is transported principally by AUX1 and PIN carriers³⁻⁵.

Compared with gravitropism, the tropic response to asymmetric water availability, i.e., hydrotropism, has been far less studied. Previously, it was reported that surgical removal or ablation of the root cap reduces hydrotropic bending in pea⁶⁻⁸ and *Arabidopsis thaliana*⁹, suggesting that the machinery for sensing moisture gradients resides in the root cap. It has also been reported that hydrotropic bending occurs due to differential growth in the elongation zone^{7,10}. However unlike gravitropism, hydrotropism in *A. thaliana* is independent of AUX1 and PIN-mediated auxin transport^{11,12}. Indeed, roots bend hydrotropically in the absence of any redistribution of auxin detectable by auxin-responsive reporters^{13,14}. Instead, root hydrotropism requires signalling by the hormone abscisic acid (ABA)¹². These findings imply that, compared to gravitropism, hydrotropism requires a distinct signalling mechanism¹⁵.

The involvement of ABA in hydrotropism was initially suggested by aberrant responses in *A. thaliana* mutants deficient for ABA synthesis or response¹². More recently, loss-of-function ABA receptor and response mutants that are insensitive or hypersensitive to ABA have been shown to be insensitive or hypersensitive to a hydrotropic stimulus, respectively¹⁶. In addition, hydrotropism in *A. thaliana* roots requires a gene called *MIZU-KUSSEI1* (*MIZ1*)¹⁷, which is upregulated by application of 10 μ M ABA¹⁸. Despite *miz1* roots being oblivious to water potential gradients, they nevertheless bend like wild type in response to gravity¹⁷. The MIZ1 sequence contains a DUF617 domain that is conserved among the genomes of

terrestrial plants, but absent in algae and animals, suggesting a role for hydrotropism in the evolution of land plants¹⁷. A functional *MIZ1:MIZ1-GFP* fusion protein is expressed in lateral root cap cells as well as cortex and epidermis cells in the meristem and elongation zone^{18,19}. However it is unclear whether this broad expression pattern is necessary for MIZ1's function in hydrotropism or whether ABA signal transduction components in general have to be expressed in specific root tip tissues for a hydrotropic response. The present study describes a series of experiments in *A. thaliana* designed to identify the root tissues essential for a hydrotropic response. We report that MIZ1 and a key ABA signal-transduction component SnRK2.2 expressed specifically in the root cortex are sufficient to drive hydrotropism, and conversely that hydrotropism is blocked by inhibiting the ability of specifically the cortex to execute a differential growth response. Our results support a re-evaluation of hydrotropic signalling, revealing the importance of the cortex and the elongation zone for signal perception as well as bending.

Results

The root meristem and columella are dispensable for hydrotropism

To uncover which root cell types and zones are required during a hydrotropic response in *A. thaliana* roots, we ablated cells using a femtosecond laser. Successful ablation of the columella cells was confirmed by propidium iodide staining of root tissues (Fig. 1a, b) and hydro- and gravitropism assays performed as described previously^{11,17} (for details on hydrotropism assays used in this paper, see Supplementary Fig. 1). Whilst columella ablation successfully inhibited the gravitropic response as previously reported¹, it did not inhibit the hydrotropic response (Fig. 1c, e). We suggest the discrepancy with earlier experiments arose from their being performed under adverse growth conditions, as indicated by roots elongating more than an order of magnitude slower than those used here. Importantly, the ablated roots in this study elongated at an equivalent rate as the intact roots

throughout both gravitropism and hydrotropism assays (Fig. 1d, f). Further probing of the region necessary for stimulus perception showed that even when ablation encompassed essentially the entire meristem, hydrotropism was scarcely affected (Supplementary Fig. 2). Crucially, when seedlings with ablated root cap or meristem were placed in an assay system that lacked the moisture gradient, ablated roots responded in the same way as intact roots with only minimal bending, demonstrating that laser ablation *per se* did not induce a response that mimicked hydrotropism (Supplementary Fig. 2).

Because this apparent dispensability of the columella conflicts with previous results with laser ablation⁹, we independently validated the experiment in the split-agar system by excising the distal region of the root tip (~250 µm) manually. As with laser ablation, manual excision of columella and meristem did not induce bending in the absence of a water potential gradient (Supplementary Fig. 2), demonstrating root tip removal does not mimic a hydrotropism response. Most significantly, manual excision of columella and meristem did not disrupt hydrotropic bending in the presence of a water potential gradient, giving results comparable to whole roots (Supplementary Fig. 2). Whilst we cannot exclude the possibility that hydrotropic stimuli are perceived in the root cap when that tissue is present, our ablation and excision results demonstrate that roots are able to sense as well as respond to water potential gradients within the elongation zone.

Root hydrotropism depends on the ABA signalling component SnRK2.2

ABA represents a critical signal for numerous plant abiotic stress responses²⁰ including root hydrotropism. ABA responses are mediated by a negative regulatory signalling module involving soluble receptors of the START-domain superfamily (PYR/PYL/RCARs), clade A, type 2C protein phosphatases (PP2Cs) and subclass III Snf1-related kinases (SnRK2s)²⁰. ABA binds to PYR1/PYL/RCAR, which induces a conformational change that allows the receptor proteins to bind to, and thereby inhibit, PP2Cs^{21,22}. PP2Cs dephosphorylate SnRK2s, suppressing their activity; thus SnRK2 activity increases in the presence of ABA due to PP2Cs being bound to the PYR1/PYL/RCAR ABA receptors²³.

When active, the SnRK2s phosphorylate transcription factors and other downstream targets^{20,23}.

To investigate how ABA controls hydrotropism, we characterised a double mutant lacking the ABA signalling kinases SnRK2.2 and SnRK2.3²⁴. Although retaining some ABA responsiveness, this double mutant was selected for experiments because, in contrast to most mutants in ABA perception, it is neither dwarfed nor wilted. We initially assayed hydrotropism in a split-agar-based system²⁵. Hydrotropism in the *snrk2.2 snrk2.3* double mutant was strongly attenuated, but was restored in the *snrk2.2 snrk2.3* double mutant expressing the *SnRK2.2* gene under the control of its own promoter (Fig. 2b). Identical results were obtained using a moisture gradient in air hydrotropic assay (Supplementary Fig. 5). Hence, the SnRK2.2 kinase appears to be required for hydrotropism.

As the *snrk2.2 snrk2.3* double mutant had slightly shorter roots and a reduced growth rate compared to wild type (Supplementary Fig. 3), we compared the growth rates of the double mutant on half strength Murashige and Skoog (MS) medium and hydrotropism plates and found them to be comparable (Supplementary Fig. 3), ruling out hypersensitivity of the *snrk2.2 snrk2.3* double mutant to sorbitol. In addition, we performed split-agar hydrotropism assays with younger wild-type seedlings to assess whether a reduction in tip angle was caused simply by a reduced root growth rate. Roots bent with similar kinetics despite differences in length and growth rate, indicating that hydrotropic bending is not proportional to root growth rate (Supplementary Fig. 3).

Hydrotropism requires SnRK2.2 signalling only in the root cortex

To gain insight into the tissue specificity of hydrotropism, we created a translational GFP fusion to the *SnRK2.2* genomic sequence and expressed the reporter in the *snrk2.2 snrk2.3* double mutant background. In the resulting lines, roots regained wild type sensitivity to 10 μ M ABA (Supplementary Fig. 4) and bent hydrotropically in the moisture gradient in air assay (but not the split-agar assay) (Supplementary Fig. 4). We assume that the differences in hydrotropic response obtained using the different assays could be due to the moisture in

air gradient providing a steeper water potential gradient than the split-agar assays. Hence, the translational reporter appeared partially functional. Using confocal imaging *SnRK2.2*-GFP signal was detected in nuclear and cytoplasmic compartments, consistent with the sub-cellular localisation of its known regulatory targets^{26,27}. Moreover, at the tissue scale, *SnRK2.2:SnRK2.2-GFP* was ubiquitously expressed throughout the root apex, including root cap and elongation zone (Fig. 2c).

To pinpoint the root tissue where *SnRK2.2* is required during a hydrotropic response, we expressed the *SnRK2.2* genomic sequence in the *snrk2.2 snrk2.3* double mutant background using a suite of tissue- and zone-specific promoters. *SnRK2.2* expressed under the control of the meristem and transition zone-specific *RCH1* promoter²⁸ complemented the *snrk2.2 snrk2.3* hydrotropic defect (Fig. 2d). Surprisingly, rescue failed when *SnRK2.2* was expressed specifically in the root cap (*SOMBRERO*²⁹, *SMB:SnRK2.2*), epidermis and lateral root cap (*WEREWOLF*³⁰, *WER:SnRK2.2*), or endodermis (*SCARECROW*³¹, *SCR:SnRK2.2*) (Fig. 2d). In contrast, double mutant roots bent hydrotropically as the wild type when expressing *SnRK2.2* in just the cortex (*Co2*³², *Co2:SnRK2.2*) (Fig. 2d). *SnRK2.2* expression levels in the *Co2:SnRK2.2* line were low in comparison to non-rescuing epidermal, lateral root cap or endodermal driven lines, demonstrating that mutant rescue is not simply a dose effect (Supplementary Fig. 5). In addition, we confirmed the hydrotropism response of the *Co2:SnRK2.2* line using the moisture in air gradient assay (Supplementary Fig. 5). Hence, root hydrotropism appears to require the ABA response machinery specifically in the cortex.

Cortex-specific MIZ1 expression rescues the miz1 hydrotropic defect

To independently assess tissue specificity for the hydrotropic response, we determined which tissues require MIZ1, a protein previously identified as essential for hydrotropism and localized to cortex, epidermis, and lateral root cap¹⁹. We used various promoters to express MIZ1-GFP in specific tissues in the *miz1* background (Supplementary Fig.6). When constructs that included the *MIZ1* terminator were used, MIZ1-GFP expression driven by *RCH1* was detected in the meristem, by *SMB* in the root cap, by *SCR* in the

endodermis, and by *COR* and by *Co2* in the cortex, all as expected^{28,29,31-33} (Supplementary Fig. 6). Compared to *SCR* or *Co2*, the *COR* promoter drove MIZ1-GFP expression farther into the elongation zone. In contrast, the *WER* promoter drove MIZ1-GFP expression not only in the epidermis and lateral root cap, as expected³⁰, but also in the cortex. Like *COR*, expression from *WER* continued well into the elongation zone. Note that none of these constructs altered root growth rate appreciably (Supplementary Fig. 6).

Using the tissue-specific MIZ1-GFP constructs, we assayed hydrotropism using the moisture gradient in air method, which gave approximately 80° bending after 12 hours. As expected, hydrotropic bending was fully rescued by expressing MIZ1-GFP under the *MIZ1* promoter (Supplementary Fig. 6). In contrast, little or no hydrotropic curvature resulted when MIZ1-GFP was expressed in root cap (*SMB*), in endodermis (*SCR*), or in the meristem (*RCH1*). Mutant complementation was only partial using *Co2* to drive MIZ1-GFP expression, but rescue was complete employing either *WER* or *COR* promoters, revealing a requirement for MIZ1 in the elongation zone (Supplementary Fig. 6). Mutant rescue was also complete when MIZ1-GFP expression was driven by the *PIN2* promoter, which like *WER*, drives expression in lateral root cap, epidermis and cortex, which for the latter tissues continues well into the elongation zone (Fig. 2 e-g). Finally, when *WER*-driven expression was removed from the cortex, which happened if the native MIZ1 terminator was replaced by a terminator from a heat-shock protein (HSP), *miz1* rescue essentially failed (Fig. 2e,g). Identical responses for *WER*- and *PIN2*-driven MIZ1-GFP expression were obtained using the split-agar assay (Supplementary Fig. 5). Taken together, these results show that hydrotropic bending requires MIZ1 expression specifically in the root cortex and that the expression domain must span at least part of the elongation zone. This conclusion is consistent with laser ablation and *SnRK2.2* expression experiments that, when taken collectively, establishes the functional importance of the cortex within the elongation zone for the hydrotropic response.

Low levels of ABA promote root elongation

Root cortical cells abut the endodermis (Fig. 2a), a recently reported site of ABA accumulation in roots³⁴. Hence, ABA response machinery in the cortex would be ideally positioned to sense lateral movement of ABA from the endodermis into outer root tissues, and presumably triggering growth responses. In roots, whilst high ABA levels inhibit growth²⁴, low levels of this hormone promote elongation at low water potential³⁵⁻³⁷. To understand the ABA-dependent growth mechanism underlying hydrotropism, we next investigated the effect of low doses of ABA on root growth. Transferring seedlings onto 100 nM ABA stimulated root growth rate in the wild type but had minimal effect on *snrk2.2 snrk2.3* (Fig. 3a, Supplementary Fig. 7). Comparing meristem and elongation zone of those roots, 100 nM ABA appeared to change neither the length nor cell number within the meristem but significantly increased elongation-zone length in wild type and *Co2:SnRK2.2* complementation lines (Fig. 3c, Supplementary Fig. 7). The increased root growth rate was accompanied by both an increased rate of cell production and an increased mature cell length (Supplementary Fig. 7, Fig. 3b). Taken together, these data suggest that low doses of ABA in these non-stressed plants stimulate rates of cell division and elemental elongation.

To examine tissue specificity in the promotion of root growth by ABA, we analysed nuclear ploidy of specific tissues by performing cell sorting and DNA-content measurements. Significantly, 100 nM ABA stimulated endoreplication specifically in root cortical cells, as evidenced by the increased fraction of 8C nuclei at the expense of 4C (Fig. 3e). In contrast, 100 nM ABA had little if any effect on endoreplication in either atrichoblast or endodermal cells (Fig. 3d, f). Hence, ABA appears to specifically trigger changes in cell cycle machinery in just the cortex, consistent with a fundamental role for this tissue in mediating hydrotropism.

Hydrotropism is driven by differential cortical cell expansion

One might question whether an asymmetry of growth-promoting mechanisms within a single tissue could provide sufficient mechanical leverage to trigger root curvature. To

explore whether such changes in the dynamics of cortical cells are sufficient to drive root bending during hydrotropism, we developed a mathematical model (see Methods and Supplementary Note 1), taking advantage of recent theoretical work that successfully recapitulates the root's growth rate profile by ascribing distinct mechanical contributions to the various tissues³⁸. For a short period following exposure to the water potential gradient, a small group of cortical cells on the dry side of the root were treated as undergoing early entry into rapid elongation, changing their mechanical properties to be the same as cells in the elongation zone. This differential elongation, coupled with the cell-to-cell adhesion typical for plant cells, caused the root midline to bend in this region (Supplementary Fig. 8).

To assess the model further, we quantified the growth kinetics of hydrotropically bending roots by using image analysis, resolving both elemental elongation and curvature. These experimental data resembled the evolution of root tip angle predicted by the model (Supplementary Fig. 8). Hence, the root cortex emerges as a plausible driver to accomplish hydrotropic bending. Taken together, the experimental data and model simulations support our hypothesis that hydrotropism is driven by differential elemental expansion within the root cortex.

If hydrotropic bending is driven by an asymmetric expansion of cortical cells in the elongation zone, we reasoned that hydrotropism could be blocked by interfering with the orderly progression of cells through the growth zone. To test this, we took advantage of the overexpression phenotype of the cyclin-dependent kinase inhibitor SIAMESE (*SIM*), in which cell division is inhibited and endoreplication is stimulated³⁹. We used a GAL4-VP16 driven transactivation system to co-express *SIM* and a nuclear-localised GFP marker specifically in either epidermis, cortex, or endodermis. In each case, root meristem cells overexpressing *SIM* were enlarged (Fig. 4a-c) but cells in adjacent tissues were not detectably affected and were of similar length to cells of roots expressing only the *GFP* marker (Fig. 4d-e). Next, we tested each tissue-specific, *SIM* over-expressing line for hydrotropism. Roots over-expressing *SIM* in root epidermis or endodermis bent indistinguishably from the parental lines, whereas *SIM* overexpression in the cortex blocked root hydrotropic bending (Fig. 4f).

In contrast, roots of every *SIM* overexpression line retained a wild-type response to gravity (Fig. 4g), revealing that *SIM* overexpression in the cortex did not simply prevent all differential root growth processes.

Discussion

We report that root tropic responses to gravity and water are driven by distinct molecular and tissue-based mechanisms. In the case of gravity, root re-orientation is sensed by columella cells at the root tip¹, triggering the formation of a lateral auxin gradient across the root with higher concentrations on the lower side of the root^{40,41}. This auxin gradient is then transported via the lateral root cap to epidermal cells in the elongation zone³ where it elicits downward root bending by stimulating expansion on the upper side and inhibiting it on the lower-side⁴². In contrast, here, laser ablation experiments demonstrate that perceiving a water potential gradient and fully responding thereto requires neither meristem, lateral root cap, nor columella (Fig. 1). Hence, unlike its role in root gravitropism, the elongation zone is able to perform a dual function during a hydrotropic response, both sensing a water potential gradient and undergoing differential growth. This conclusion stands despite the possibility of meristem and root cap participating in hydrotropism in intact roots, for example by integrating signals from water and gravity.

We also confirm that root hydrotropism uses the hormone ABA and that the ABA signal transduction components SnRK2.2 and SnRK2.3 play a key role regulating root re-orientation. Surprisingly, targeted *SnRK2.2* expression studies in *snrk2.2 snrk2.3* (Fig. 2) revealed the critical importance during hydrotropism of ABA response machinery just in the cortex. The importance of this specific root tissue for hydrotropism was further supported by the response depending on cortical expression of MIZ1 (Fig. 2). Taken together, our results demonstrate that ABA and MIZ1 responses in the cortex of the root elongation zone play a central role in hydrotropic response of *A. thaliana* roots (Fig. 5). Hence, root gravitropic and hydrotropic responses are driven by distinct signals and tissue-based mechanisms.

Consistent with our conclusion, Krieger *et al.*⁴³ recently described the opposing effect of reactive oxygen species on these tropic responses and the distinct positions at which roots bend during gravitropic and hydrotropic responses.

A key question for hydrotropic research is to understand how a modest gradient in water potential across the root is perceived (and presumably amplified) into a growth response. Mechano-sensing, differential movement of water, ions or signalling molecules all represent likely candidates, but detection methods that are more sensitive than those currently available will be necessary to get to the root of this plant environmental response.

METHODS

Ablation of root-tip cells using laser-microscopy systems

For micro-beam laser irradiation, 4-day-old seedlings were aligned in a micro-chamber comprising two glass coverslips (25×60 mm² and 24×24 mm², Matsunami) and a seal (TaKaRa Slide Seal for in situ PCR, Takara Bio). The micro-chamber was filled with low-melting agar (0.5x MS medium, 0.4% (w/v) sucrose [Wako Pure Chemical Industries], 0.2% (w/v) low-melting agarose [SeaPlaque; FMC BioProducts]). These samples were put on the stage of a microscope (Nikon ECLIPSE TiE, Nikon) and irradiated with a N₂ pulsed micro-beam laser through Coumarin 440 with an averaged power of 330 kW for a 3 to 5 nanosecond pulse (MicroPoint PIJ-3-1; Andor Technology). For femtosecond laser irradiation, seedlings were placed on 0.5x MS medium on a glass slide. Amplified femtosecond laser pulses from a re-generatively amplified Ti:sapphire femtosecond laser system (IFRIT; 780 ± 5 nm, 230 fs, < 1 mJ/pulse, 1 kHz, Cyber Laser Inc.) were focused onto root cap cells through a 10x objective lens (UPlanSApo NA 0.4, Olympus) on a confocal laser scanning microscope (FV1000-BX51, Olympus). Laser pulses (200) were detected with a mechanical shutter (gate time: 200 ms) and delivered to the sample. The laser pulse was collimated by dual convex lenses before the microscope, and the laser focal point was tuned to the plane of the image. The diameter of the laser focal point, which is consistent with the beam waist, was about 1 µm. A neutral density filter was put between the laser and

microscope and used to tune the laser pulse energy to around 400 nJ/pulse, which is about 4 times larger than the threshold energy for cavitation bubble generation in water (100 nJ/pulse). Laser-ablated seedlings were incubated on 0.5x MS medium for 1 h in a vertical position before performing further assays.

Root tropism and growth assays

The hydrotropism assay shown in Fig. 1 and Supplementary Fig. 5b-e were performed as described previously using a split-agar system with 812 mM sorbitol¹¹. Gravitropism assays shown in Fig. 1 and Supplementary Fig. 2 were performed using 1% agar medium with or without 0.5x MS medium as described previously¹⁷. Hydrotropism assays shown in Fig. 2g and Supplementary Fig. 2g-l, 4e-f, 5 f-g and 6 were performed using a moisture gradient in air as described previously¹¹. Four-day-old seedlings were used for all tropism assays described above.

Hydrotropism assays shown in Fig. 2b,d and 4 and Supplementary Fig. 2m, 3, 4d and 8 were performed as previously described²⁵ using 5-day-old seedlings in a split-agar system with 400 mM sorbitol.

For gravitropism assays shown in Fig. 4, 5-day-old seedlings were transferred to new plates containing 0.5x MS medium with 1% agar. After acclimatisation for 2 hours in the controlled environment room, plates were rotated by 90°. Images of seedlings were acquired using an automated imaging platform⁴⁴ and root tip angle and length determined using the Fiji image processing package (<http://fiji.sc/Fiji>).

For assessing root growth response to ABA, 5-day-old seedlings were transferred to new plates containing 0.5x MS medium with the indicated amount of ABA (Sigma). To determine meristem cell number and length, longitudinal images of root tips clearly showing the cortex cell file were taken with a confocal laser scanning microscope, using propidium iodide to stain cell walls. Starting from the quiescent centre (QC), the length of individual cortex cells was determined using the Cell-o-Tape macro⁴⁵ for Fiji. The mean length of meristem cells was calculated using ten cells from the rapid amplifying region of the meristem (cells 10-19

counting shootward from the QC), and the end of the meristem deemed to have been reached when consecutive cells had reached or exceeded the mean length by two. Cell production rates were calculated as previously described⁴⁶.

Modelling root bending

A mechanical model has been developed to describe hydrotropism-associated root bending. The approach³⁸ exploits the large aspect ratio of the root, which allows a relatively simple description of bending in terms of the stretch and curvature of the root midline. A viscoplastic constitutive relation is adopted (viscous flow where the yield stress is exceeded), with the yield stress of cortical cells on the dry side of the root modified in response to a hydrotropic stimulus; the resulting partial differential equations for the dependence of midline stretch and curvature in terms of time and arc length are solved numerically by a finite-difference approach. Further details are given in the Supplementary Note 1, Section 2.

Data availability

The data that support the findings of this study are available from the corresponding authors upon request.

References

- 1 Blancaflor, E. B., Fasano, J. M. & Gilroy, S. Mapping the functional roles of cap cells in the response of *Arabidopsis* primary roots to gravity. *Plant Physiol* **116**, 213-222 (1998).
- 2 Ottenschlager, I. *et al.* Gravity-regulated differential auxin transport from columella to lateral root cap cells. *P Natl Acad Sci USA* **100**, 2987-2991, doi:10.1073/pnas.0437936100 (2003).
- 3 Swarup, R. *et al.* Root gravitropism requires lateral root cap and epidermal cells for transport and response to a mobile auxin signal. *Nat Cell Biol* **7**, 1057-1065, doi:10.1038/ncb1316 (2005).

387 4 Rahman, A. *et al.* Gravitropism of *Arabidopsis thaliana* roots requires the polarization
388 of PIN2 toward the root tip in meristematic cortical cells. *Plant Cell* **22**, 1762-1776,
389 doi:10.1105/tpc.110.075317 (2010).

390 5 Friml, J. Subcellular trafficking of PIN auxin efflux carriers in auxin transport. *Eur J*
391 *Cell Biol* **89**, 231-235, doi:10.1016/j.ejcb.2009.11.003 (2010).

392 6 Jaffe, M. J., Takahashi, H. & Biro, R. L. A pea mutant for the study of hydrotropism in
393 roots. *Science* **230**, 445-447, doi:10.1126/science.230.4724.445 (1985).

394 7 Takahashi, H. & Suge, H. Root hydrotropism of an agravitropic pea mutant,
395 *ageotropum*. *Physiol Plantarum* **82**, 24-31 (1991).

396 8 Takahashi, H. & Scott, T. K. Intensity of hydrostimulation for the induction of root
397 hydrotropism and its sensing by the root cap. *Plant Cell Environ* **16**, 99-103, doi:DOI
398 10.1111/j.1365-3040.1993.tb00850.x (1993).

399 9 Miyazawa, Y. *et al.* Effects of locally targeted heavy-ion and laser microbeam on root
400 hydrotropism in *Arabidopsis thaliana*. *J Radiat Res* **49**, 373-379,
401 doi:10.1269/jrr.07131 (2008).

402 10 Miyamoto, N., Ookawa, T., Takahashi, H. & Hirasawa, T. Water uptake and hydraulic
403 properties of elongating cells in hydrotropically bending roots of *Pisum sativum* L.
404 *Plant Cell Physiol* **43**, 393-401, doi:DOI 10.1093/pcp/pcf046 (2002).

405 11 Kaneyasu, T. *et al.* Auxin response, but not its polar transport, plays a role in
406 hydrotropism of *Arabidopsis* roots. *J Exp Bot* **58**, 1143-1150, doi:10.1093/jxb/erl274
407 (2007).

408 12 Takahashi, N., Goto, N., Okada, K. & Takahashi, H. Hydrotropism in abscisic acid,
409 wavy, and gravitropic mutants of *Arabidopsis thaliana*. *Planta* **216**, 203-211,
410 doi:10.1007/s00425-002-0840-3 (2002).

411 13 Takahashi, H., Miyazawa, Y. & Fujii, N. Hormonal interactions during root tropic
412 growth: hydrotropism versus gravitropism. *Plant Mol Biol* **69**, 489-502,
413 doi:10.1007/s11103-008-9438-x (2009).

414 14 Shkolnik, D., Krieger, G., Nuriel, R. & Fromm, H. Hydrotropism: Root Bending Does
415 Not Require Auxin Redistribution. *Mol Plant* **9**, 757-759,
416 doi:10.1016/j.molp.2016.02.001 (2016).

417 15 Shkolnik, D. & Fromm, H. The Cholodny-Went theory does not explain hydrotropism.
418 *Plant Sci* **252**, 400-403, doi:10.1016/j.plantsci.2016.09.004 (2016).

419 16 Antoni, R. *et al.* PYRABACTIN RESISTANCE1-LIKE8 Plays an Important Role for
420 the Regulation of Abscisic Acid Signaling in Root. *Plant Physiology* **161**, 931-941,
421 doi:10.1104/pp.112.208678 (2013).

422 17 Kobayashi, A. *et al.* A gene essential for hydrotropism in roots. *P Natl Acad Sci USA*
423 **104**, 4724-4729, doi:10.1073/pnas.0609929104 (2007).

424 18 Moriwaki, T., Miyazawa, Y., Fujii, N. & Takahashi, H. Light and abscisic acid
425 signalling are integrated by MIZ1 gene expression and regulate hydrotropic response
426 in roots of *Arabidopsis thaliana*. *Plant Cell Environ* **35**, 1359-1368,
427 doi:10.1111/j.1365-3040.2012.02493.x (2012).

428 19 Moriwaki, T., Miyazawa, Y., Kobayashi, A. & Takahashi, H. Molecular Mechanisms of
429 Hydrotropism in Seedling Roots of *Arabidopsis thaliana* (Brassicaceae). *Am J Bot*
430 **100**, 25-34, doi:10.3732/ajb.1200419 (2013).

431 20 Cutler, S. R., Rodriguez, P. L., Finkelstein, R. R. & Abrams, S. R. Abscisic Acid:
432 Emergence of a Core Signaling Network. *Annu Rev Plant Biol* **61**, 651-679,
433 doi:10.1146/annurev-arplant-042809-112122 (2010).

434 21 Ma, Y. *et al.* Regulators of PP2C Phosphatase Activity Function as Abscisic Acid
435 Sensors. *Science* **324**, 1064-1068, doi:10.1126/science.1172408 (2009).

436 22 Park, S. Y. *et al.* Abscisic Acid Inhibits Type 2C Protein Phosphatases via the
437 PYR/PYL Family of START Proteins. *Science* **324**, 1068-1071,
438 doi:10.1126/science.1173041 (2009).

439 23 Fujii, H. *et al.* In vitro reconstitution of an abscisic acid signalling pathway. *Nature*
440 **462**, 660-664, doi:10.1038/nature08599 (2009).

- 24 Fujii, H., Verslues, P. E. & Zhu, J. K. Identification of two protein kinases required for abscisic acid regulation of seed germination, root growth, and gene expression in *Arabidopsis*. *Plant Cell* **19**, 485-494, doi:10.1105/tpc.106.048538 (2007).
- 25 Antoni, R., Dietrich, D., Bennett, M. J. & Rodriguez, P. L. Hydrotropism: Analysis of the Root Response to a Moisture Gradient. *Methods Mol Biol* **1398**, 3-9, doi:10.1007/978-1-4939-3356-3_1 (2016).
- 26 Kline, K. G., Barrett-Wilt, G. A. & Sussman, M. R. *In planta* changes in protein phosphorylation induced by the plant hormone abscisic acid. *P Natl Acad Sci USA* **107**, 15986-15991, doi:10.1073/pnas.1007879107 (2010).
- 27 Wang, P. *et al.* Quantitative phosphoproteomics identifies SnRK2 protein kinase substrates and reveals the effectors of abscisic acid action. *Proc Natl Acad Sci U S A* **110**, 11205-11210, doi:10.1073/pnas.1308974110 (2013).
- 28 Casamitjana-Martinez, E. *et al.* Root-specific *CLE19* overexpression and the *sol1/2* suppressors implicate a CLV-like pathway in the control of *Arabidopsis* root meristem maintenance. *Curr Biol* **13**, 1435-1441, doi:10.1016/S0960-9822(03)00533-5 (2003).
- 29 Willemsen, V. *et al.* The NAC Domain Transcription Factors FEZ and SOMBRERO Control the Orientation of Cell Division Plane in *Arabidopsis* Root Stem Cells. *Dev Cell* **15**, 913-922, doi:10.1016/j.devcel.2008.09.019 (2008).
- 30 Lee, M. M. & Schiefelbein, J. WEREWOLF, a MYB-related protein in *Arabidopsis*, is a position-dependent regulator of epidermal cell patterning. *Cell* **99**, 473-483, doi:10.1016/S0092-8674(00)81536-6 (1999).
- 31 Wysocka-Diller, J. W., Helariutta, Y., Fukaki, H., Malamy, J. E. & Benfey, P. N. Molecular analysis of SCARECROW function reveals a radial patterning mechanism common to root and shoot. *Development* **127**, 595-603 (2000).
- 32 Heidstra, R., Welch, D. & Scheres, B. Mosaic analyses using marked activation and deletion clones dissect *Arabidopsis* SCARECROW action in asymmetric cell division. *Genes & Dev* **18**, 1964-1969, doi:10.1101/gad.305504 (2004).
- 33 Lee, J. Y. *et al.* Transcriptional and posttranscriptional regulation of transcription factor expression in *Arabidopsis* roots. *P Natl Acad Sci USA* **103**, 6055-6060, doi:10.1073/pnas.0510607103 (2006).
- 34 Ondzighi-Assoume, C. A., Chakraborty, S. & Harris, J. M. Environmental Nitrate Stimulates Absciscic Acid Accumulation in *Arabidopsis* Root Tips by Releasing It from Inactive Stores. *Plant Cell* **28**, 729-745, doi:10.1105/tpc.15.00946 (2016).
- 35 Sharp, R. E., Wu, Y. J., Voetberg, G. S., Saab, I. N. & Lenoble, M. E. Confirmation That Absciscic-Acid Accumulation Is Required for Maize Primary Root Elongation at Low Water Potentials. *J Exp Bot* **45**, 1743-1751 (1994).
- 36 Xu, W. F. *et al.* Absciscic acid accumulation modulates auxin transport in the root tip to enhance proton secretion for maintaining root growth under moderate water stress. *New Phytol* **197**, 139-150, doi:10.1111/nph.12004 (2013).
- 37 Rowe, J. H., Topping, J. F., Liu, J. & Lindsey, K. Absciscic acid regulates root growth under osmotic stress conditions via an interacting hormonal network with cytokinin, ethylene and auxin. *New Phytol* **211**, 225-239, doi:10.1111/nph.13882 (2016).
- 38 Dyson, R. J. *et al.* Mechanical modelling quantifies the functional importance of outer tissue layers during root elongation and bending. *New Phytol* **202**, 1212-1222, doi:10.1111/nph.12764 (2014).
- 39 Churchman, M. L. *et al.* SIAMESE, a plant-specific cell cycle regulator, controls endoreplication onset in *Arabidopsis thaliana*. *Plant Cell* **18**, 3145-3157, doi:10.1105/tpc.106.044834 (2006).
- 40 Brunoud, G. *et al.* A novel sensor to map auxin response and distribution at high spatio-temporal resolution. *Nature* **482**, 103-U132, doi:10.1038/nature10791 (2012).
- 41 Band, L. R. *et al.* Root gravitropism is regulated by a transient lateral auxin gradient controlled by a tipping-point mechanism. *Proc Natl Acad Sci U S A* **109**, 4668-4673, doi:10.1073/pnas.1201498109 (2012).

- 42 Mullen, J. L., Ishikawa, H. & Evans, M. L. Analysis of changes in relative elemental growth rate patterns in the elongation zone of *Arabidopsis* roots upon gravistimulation. *Planta* **206**, 598-603, doi:DOI 10.1007/s004250050437 (1998).
- 43 Krieger, G., Shkolnik, D., Miller, G. & Fromm, H. Reactive Oxygen Species Tune Root Tropic Responses. *Plant Physiology* **172**, 1209-1220, doi:10.1104/pp.16.00660 (2016).
- 44 Wells, D. M. *et al.* Recovering the dynamics of root growth and development using novel image acquisition and analysis methods. *Philos T R Soc B* **367**, 1517-1524, doi:10.1098/rstb.2011.0291 (2012).
- 45 French, A. P. *et al.* Identifying biological landmarks using a novel cell measuring image analysis tool: Cell-o-Tape. *Plant Methods* **8**, 7 doi:Artn 710.1186/1746-4811-8-7 (2012).
- 46 Baskin, T. I. Patterns of root growth acclimation: constant processes, changing boundaries. *WIREs Dev Biol* **2**, 65-73, doi:10.1002/wdev.94 (2013).

ACKNOWLEDGEMENTS

The authors thank Caroline Howells, Kamal Swarup and Morag Whitworth for technical assistance, Jian-Kang Zhu for providing *snrk2.2 snrk2.3* seeds, Wim Grunewald for pDONR-L1-GAL4-VP16-R2, Sumika Tsukinoki for generating *WER:MIZ1-GFP(HSPter)* and *PIN2:MIZ1-GFP(HSPter)* transgenic plants and acknowledge the following funding agencies for financial support: D.D., J.F., R.A., T. N., D.W., S.T., C.S., S.M., M.R.O., L.R.B., R.D., O.J., J.K., J.R., T.B. and M.J.B. thank the Biological and Biotechnology Science Research Council (BBSRC) for responsive mode and CISB awards to the Centre for Plant Integrative Biology; D.W., C.S., S.M., M.R.O., J.K., T.P. and M.J.B. thank the European Research Council (ERC) for FUTUREROOTS project funding; L.R.B. thanks the Leverhulme Trust for an Early Career Fellowship; V.B., R.B. and L.D.V are supported by grants of the Research Foundation Flanders (G.002911N). R.B. and M.J.B. thank the Royal Society for Newton and Wolfson Research Fellowship awards; R.A., T.I.B. and M.J.B. thank the FP7 Marie-Curie Fellowship Scheme; R.D. thanks the Engineering and Physical Sciences Research Council, J.D. and M.J.B. thank the GII scheme; and V.B., R.B., L.D.V. and M.J.B. thank the Interuniversity Attraction Poles Programme (IUAP P7/29 "MARS"), initiated by the Belgian Science Policy Office. R.B.P was funded by grants from the Knut and Alice Wallenberg Foundation. This work was also supported by a Grant-in-Aid for Scientific Research on Innovative Areas (No. 22120004) from the Ministry of Education, Culture, Sports, Science and Technology (MEXT)

of Japan to H.T., a Grant-in-Aid for Young Scientists (B) (No. 26870057) from the Japan Society for the Promotion of Science (JSPS) to A.K., a Grant-in-Aid for Scientific Research on Innovative Areas (No. 22120002) from the Ministry of Education, Culture, Sports, Science and Technology (MEXT), Japan to A.N., a Grant-in-Aid for Scientific Research on Innovative Areas (No. 22120010) from the Ministry of Education, Culture, Sports, Science and Technology (MEXT), Japan to Y.H. and the Funding Program for Next-Generation World-Leading Researchers (GS002) to Y.M. L.P. was financially supported by a scholarship from the Japanese government. T.-W.B. was financially supported by the Funding Program for Next-Generation World-Leading Researchers (GS002) and the Grant-in-Aid for Scientific Research on Innovative Areas (No. 22120004).

AUTHOR CONTRIBUTIONS

D.D., L.P., A.K., J.F., V.B., R.B., R.A., T.N., S.H., T.-W.B., Y.M., D.M.W., S.T., C.J.S. performed experimental work and data analysis and mathematical modelling. D.M.W., M.R.O., L.R.B., R.D., O.J., J.R.K., S.J.M., J.R., R.B., J.D., P.L.R., T.I.B., T.P., L.D.V., N.F., Y.M., A.N., Y.H., H.T. and M.J.B. oversaw project planning and discussed experimental results and modelling simulations. D.D., L.P., A.K., N.F., Y.M., T.I.B., H.T. and M.J.B. wrote the paper.

ADDITIONAL INFORMATION

Supplementary information is available for this paper. Reprints and permissions information are available at www.nature.com/reprints. Correspondence and requests for materials should be addressed to H.T. or M.J.B.

COMPETING FINANCIAL INTERESTS

The authors declare no competing financial interests.

FIGURE LEGENDS

Figure 1 Laser ablation of columella cells affects the gravitropic but not the hydrotropic response of roots

Confocal fluorescence micrograph of propidium iodide-stained primary root tips before (a) and after (b) femtosecond-laser ablation of the columella, scale bar = 100 μ m. Time-course study of root gravitropic curvature (c) and root growth (d). In c, 0° equals horizontal. Time-course study of root hydrotropic curvature (e) and root growth (f). In e, 0° equals vertical. The hydrotropism assay was performed using the split-agar system with 812 mM sorbitol. Values are mean \pm SEM of a representative experiment, $n = 3 - 6$, from three independent experiments. Asterisks indicate statistically significant differences (* $p < 0.05$, ** $p < 0.01$, Student's t -test).

Figure 2 ABA signalling in the cortex is crucial for root hydrotropism

a Schematic drawing indicating tissues in the root tip, grey: lateral root cap, red: epidermis, green: cortex, yellow: endodermis. b Kinetics of hydrotropic curvature after transferring seedlings to split-agar plates with 400 mM sorbitol. Values are mean \pm SEM, $n = 29 - 40$. c Expression of *SnRK2.2:SnRK2.2-GFP* in the root tip, scale bar = 100 μ m. d Hydrotropic curvature 12 h after transfer to split-agar plates with 400 mM sorbitol. Values are mean \pm SEM, $n = 24-31$. Different letters indicate statistically significant differences ($p < 0.05$, Fisher's Least Significant Difference (LSD)). e, f Expression pattern of MIZ1-GFP fusion protein under control of (e) the *WER* and (f) *PIN2* promoters with *HSP* terminator. Left-hand image shows an over lay of fluorescence from GFP (green) and PI (red), right-hand image shows GFP only. Arrowhead indicates the approximate rootward boundary of the elongation zone, scale bar = 100 μ m. g Hydrotropic curvature 12 h after transfer of seedlings to the moisture gradient in air assay system. Values are mean \pm SEM of three independent experiments, $n = 35-44$. Different letters indicate statistically significant differences ($p < 0.05$, Tukey Honest Significant Difference (HSD) test). Col, *A. thaliana* Columbia-0 accession.

Figure 3 Root growth and cortical endoreplication are induced by low levels of ABA

a – c Root growth and histology. **a** Root growth without (0.5x MS) or with 100 nM ABA 24 h after transfer. Values are mean of three experiments \pm SD, $n = 12-40$. **b, c** Seedlings treated as in (a) were stained with propidium iodide and images taken with a confocal microscope. **b** Cell length of mature cortex cells. Values are mean \pm SD, $n = 18-47$ cells for 10 roots per line and treatment. **c** Meristem length was determined using Cell-o-Tape and an arithmetic method to determine the meristem end. Elongation zone length was determined by measuring the distance from the end of the lateral root cap until the first root hair bulge. Values are mean \pm SD, $n = 11-28$. For a - c: * statistically significant different ($p < 0.01$, Student's *t*-test). **d – f** Endoreplication. DNA content of nuclei isolated from (d) the epidermis (non-hair cells), (e) cortex and (f) endodermis of roots treated for 24 h without (0.5x MS, light bars) or with 100nM ABA (dark bars). Values are mean \pm SD. For d - f: * statistically significant different ($p < 0.05$, Student's *t*-test). Col, *A. thaliana* Columbia-0 accession.

Figure 4 Inhibition of differential cell elongation in the cortex prevents hydrotropism but not gravitropism

a – c Confocal images of root tips co-expressing *SIM* and *NLS-GFP* (green) in (a) epidermis, (b) cortex, (c) endodermis. Cell walls were stained with propidium iodide (white). In c, two images of the same root are shown, for better visualization of the endodermis cell file. Scale bars for a - c = 100 μ m. **d, e** Quantification of cell lengths for epidermis, cortex and endodermis files in the meristem. Values are mean \pm SD, $n = 7-52$ cells from three plants for each line and tissue. **f** Hydrotropic curvature 10 h after transfer to split-agar plates with 400 mM sorbitol. Values are mean \pm 2x SEM, $n = 14-15$ for parental lines (GL2, Co2, En7) and $n = 56$ for *SIM* expression lines (GL2>>SIM, Co2>>SIM, En7>>SIM). Different letters indicate statistically significant differences ($p < 0.05$, Fisher's LSD). **g** Gravitropic curvature 8 h after plates were rotated by 90°. Values are mean \pm 2x SEM, $n = 30-31$.

Figure 5 Conceptual model for root hydrotropism

611 SnRK2.2 and MIZ1 expression in cortex cells of the transition and elongation zone are
612 required to mediate the ABA-dependent differential growth response to a water potential
613 gradient. Perception of the water potential gradient does not require tissues in the root cap
614 or meristem, but takes place in the transition and elongation zones where the differential
615 growth response occurs.
616

Figure 1

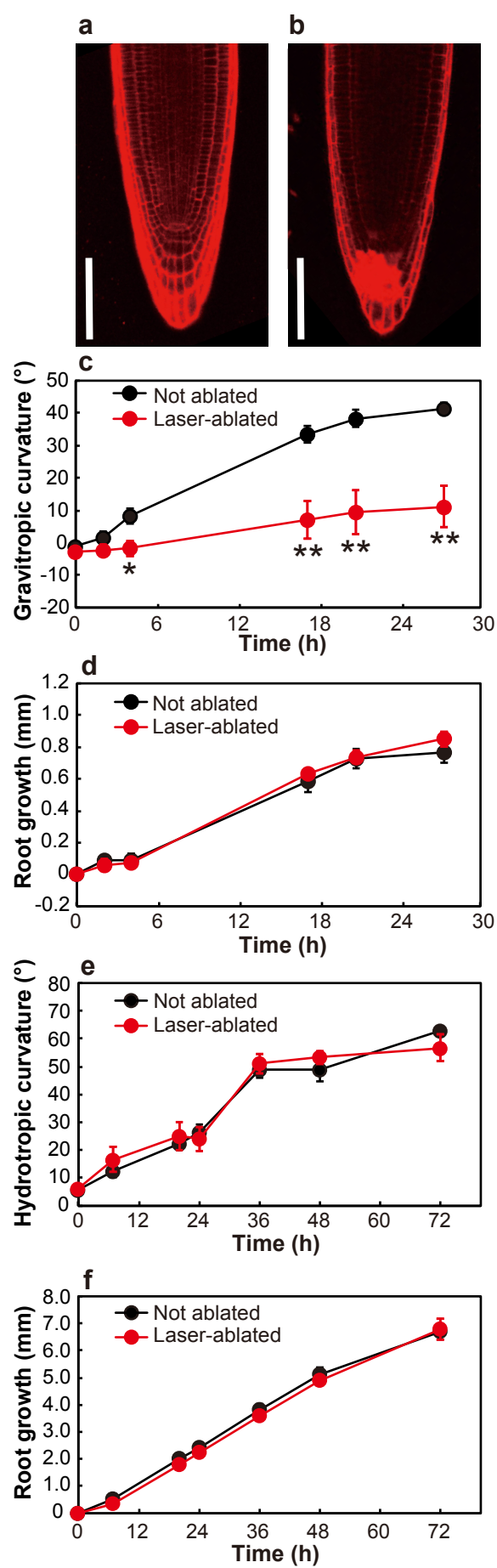


Figure 2

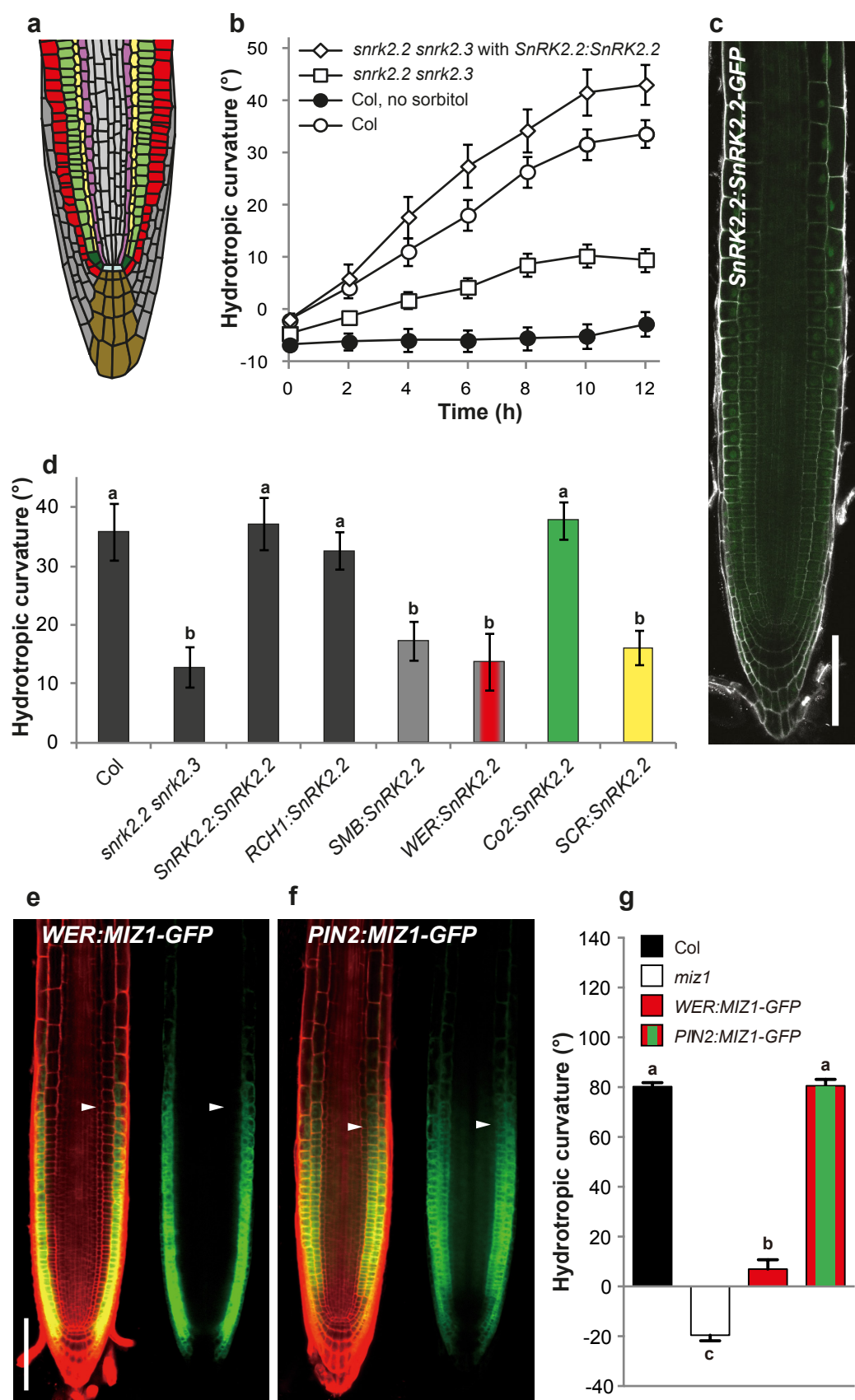


Figure 3

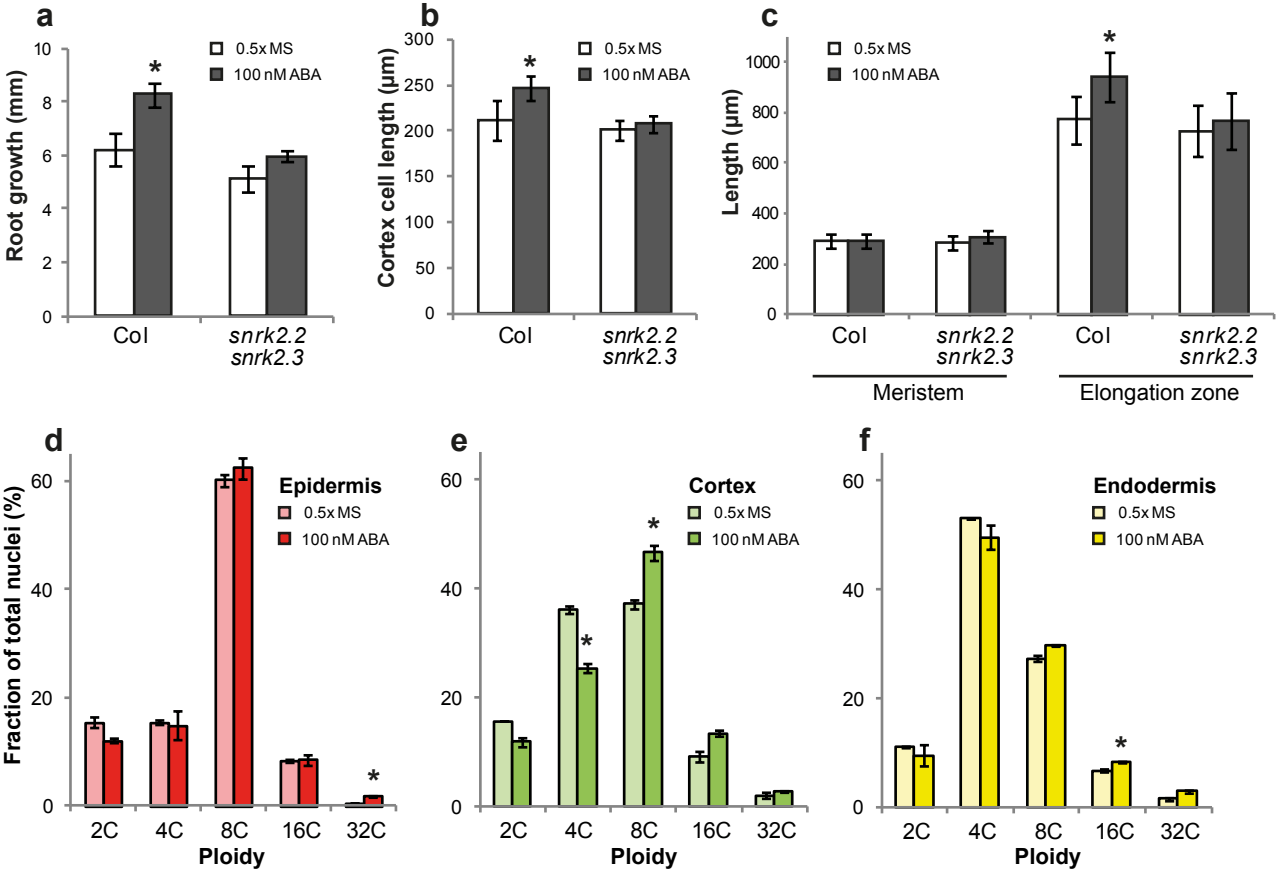


Figure 4

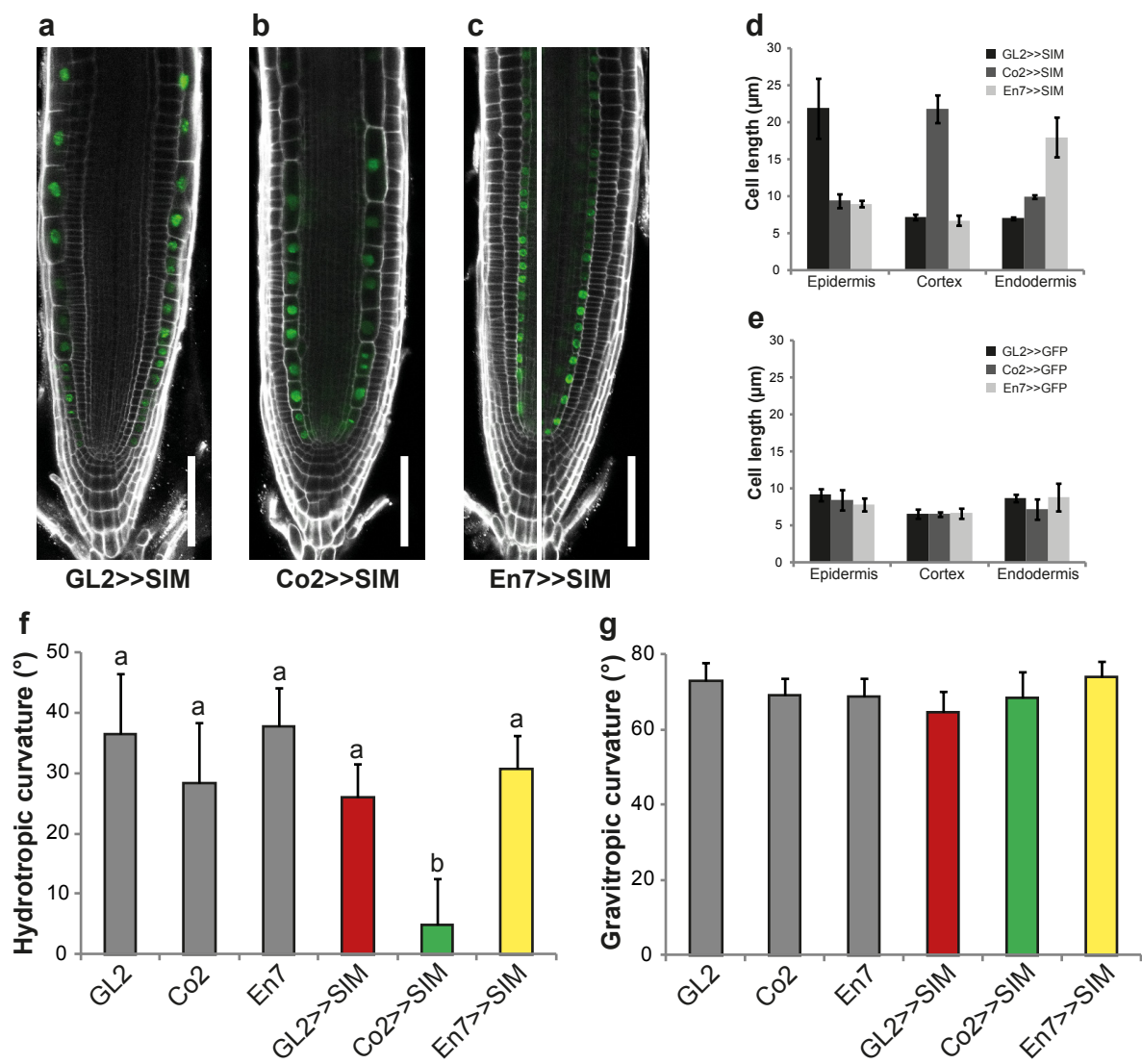
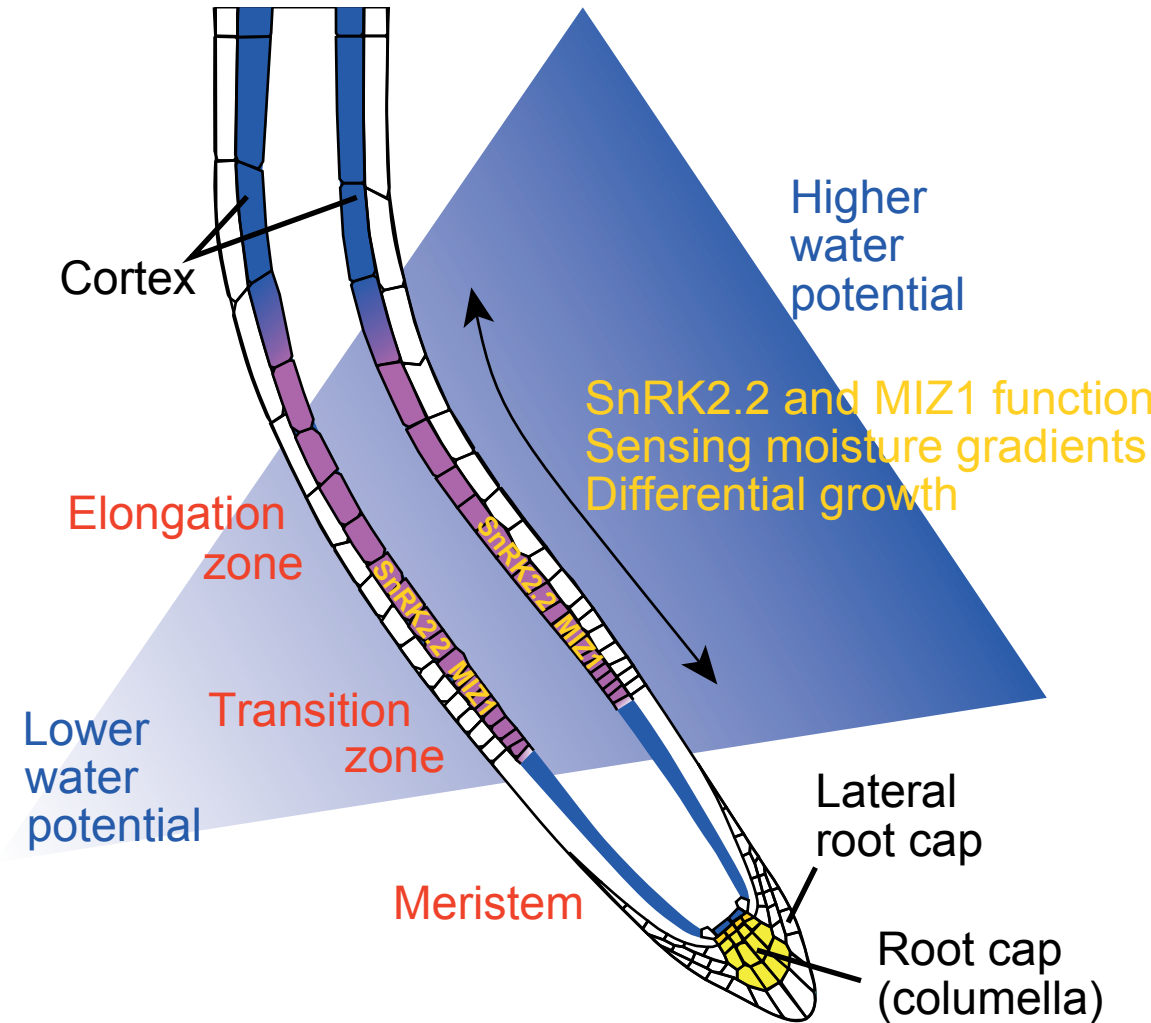
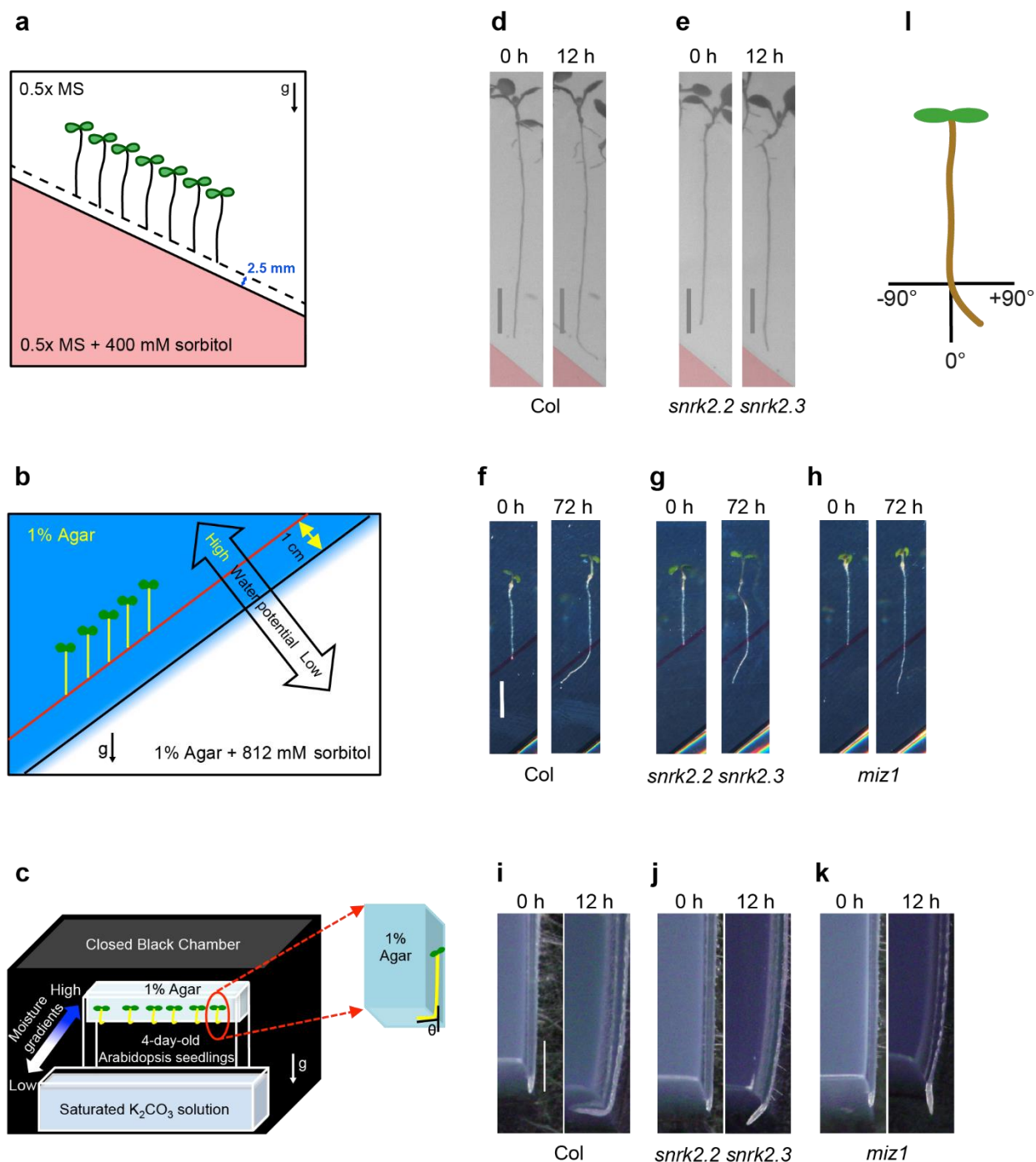


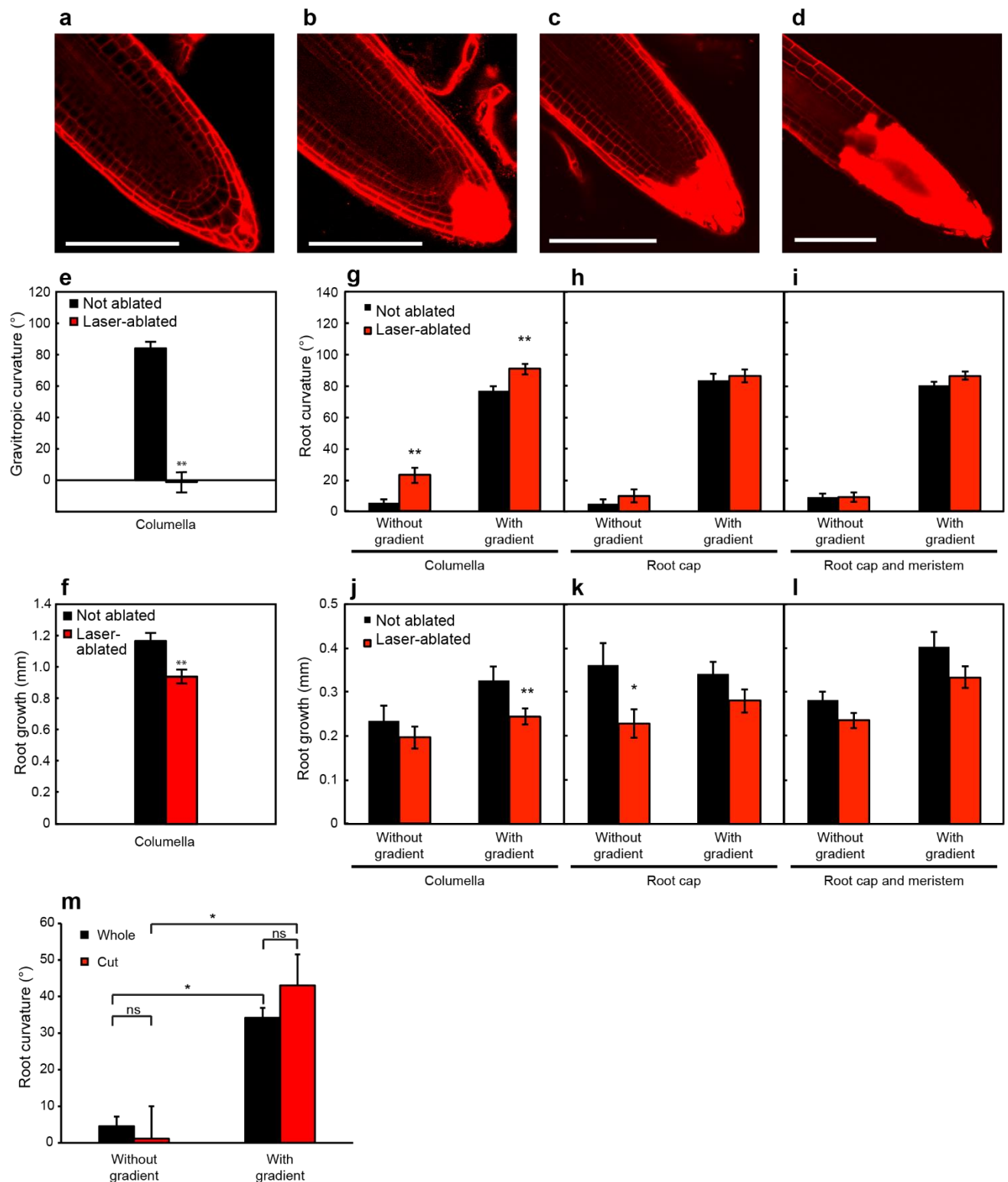
Figure 5





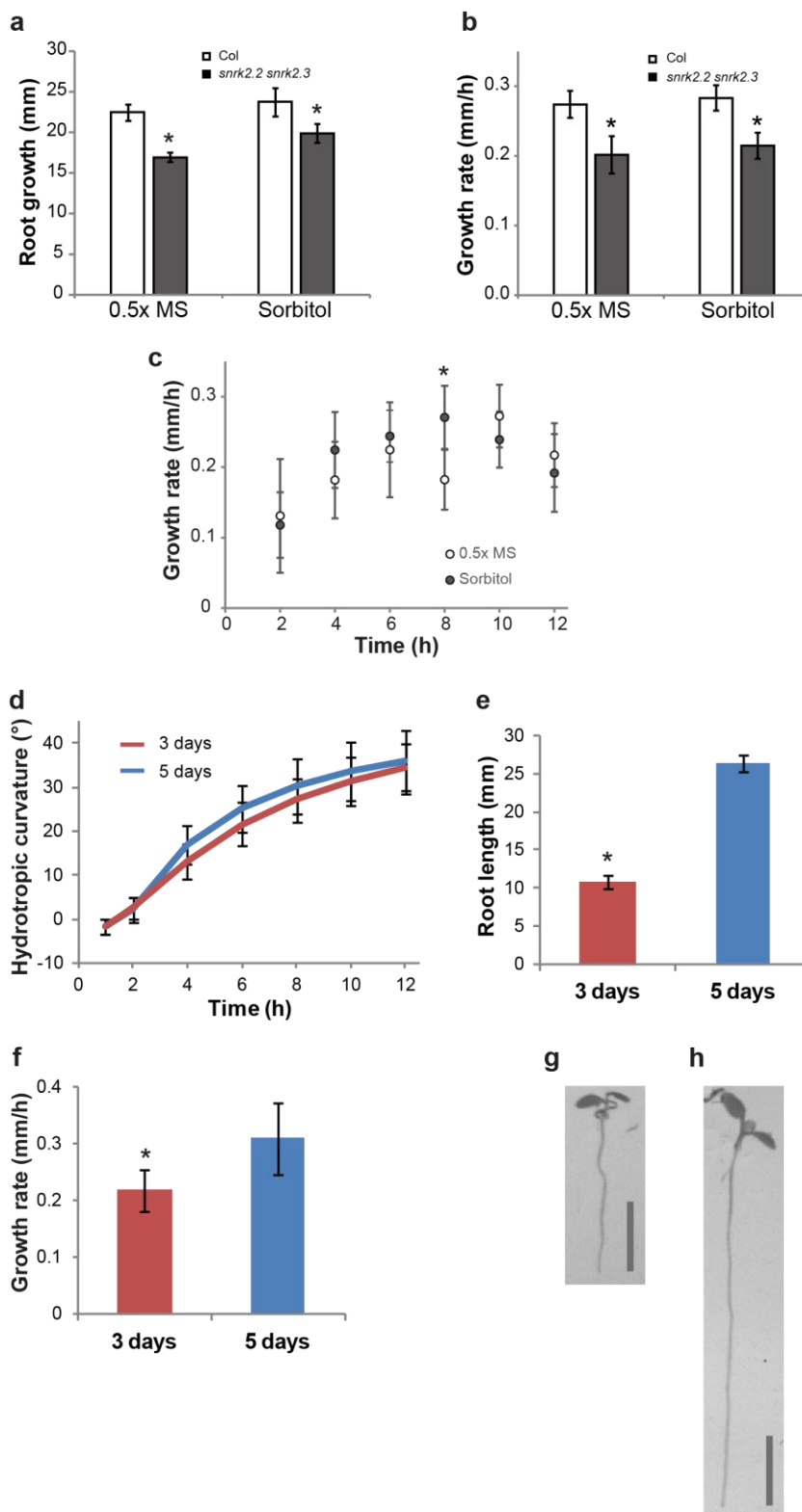
Supplementary Figure 1 Comparison of hydrotropism assays

Hydrotropism assays were performed using a split-agar-based system with (a) 400 or (b) 812 mM sorbitol or (c) a moisture gradient in air system. For detailed description of these assays see methods and references cited therein. **d**, **e** Representative images of seedlings at the start (0 h) and end (12 h) of hydrotropism assays performed with split-agar plates using 400 mM sorbitol, scale bars = 5 mm. **f** - **h** Representative images of seedlings at the start (0 h) and end (72 h) of hydrotropism assays performed with split-agar plates using 812 mM sorbitol, scale bars = 5 mm. **i** - **k** Representative images of seedlings at the start (0 h) and end (12 h) of hydrotropism assays performed using a moisture gradient in air, scale bars = 1 mm. Note that assays using 400 mM sorbitol were performed in the UK while experiments using 812 mM sorbitol and the moisture gradient in air were performed in Japan, with different growth rates of seedlings affecting the kinetics of hydrotropic bend. **l** In all assays bending of the root tip from the vertical (0°) towards medium with higher water potential was measured as a positive value.



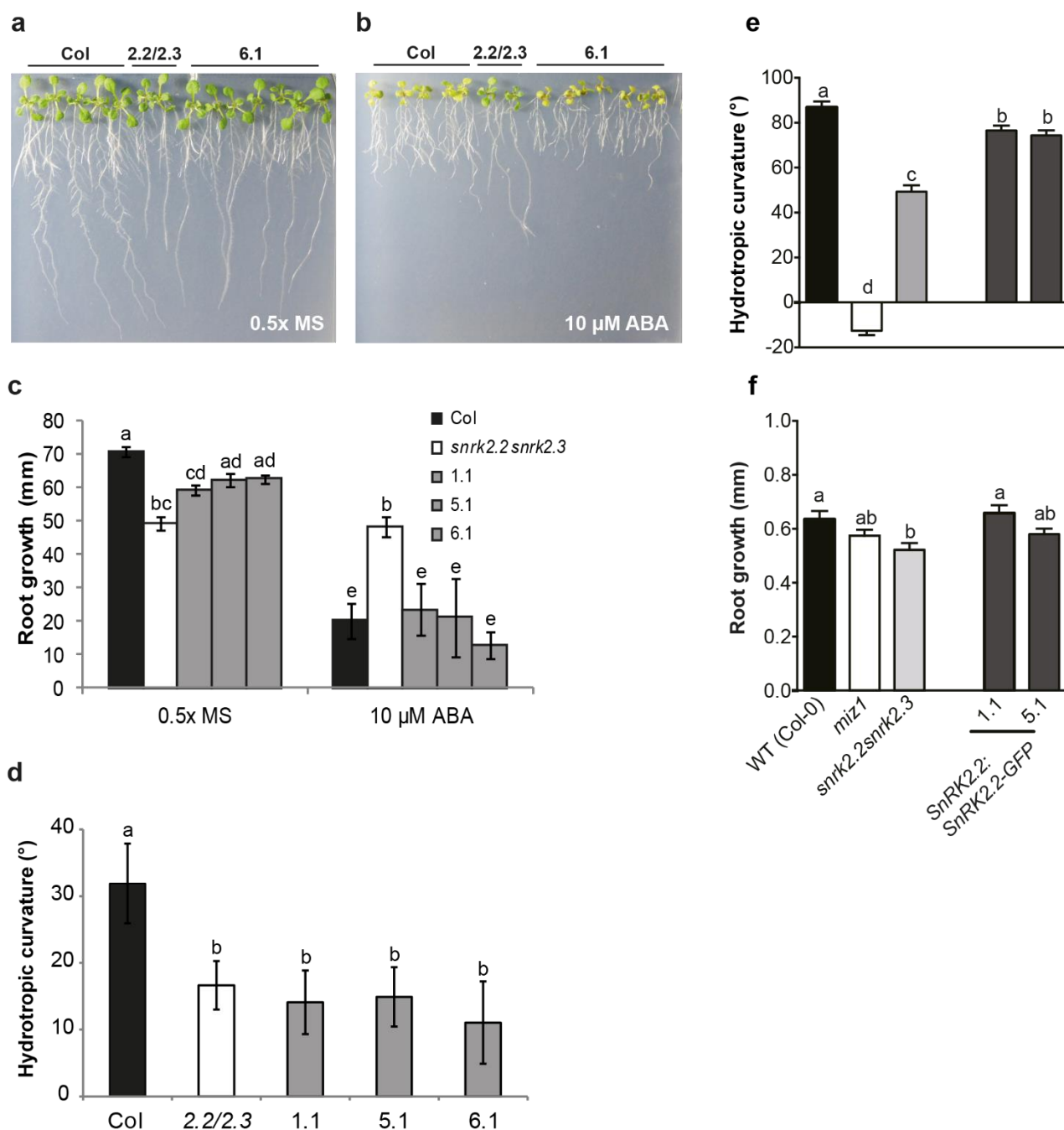
Supplementary Figure 2 Effect of laser-beam ablation and microdissection of root-tip cells on gravitropic and hydrotropic responses

Confocal fluorescence micrograph of propidium iodide (PI)-stained root cells before (a) and after (b - d) laser-beam ablation. Images of PI-stained cells show the ablation of (b) columella cells, (c) root-cap cells and (d) both the root cap and meristem, scale bars = 100 μ m. Curvature (e) and elongation growth (f) 8 h after gravistimulation. Curvature (g - i) and elongation growth (j - l) in the absence or presence of a moisture gradient 8 h after ablation of (g, j) columella, (h, k) root cap and (i, l) both root cap and meristem. Hydrotropism assays were performed using the moisture gradient in air assay. Values are mean \pm SEM of three to six independent experiments, $n = 24-62$. Asterisks indicate statistically significant differences (* $p < 0.05$, ** $p < 0.01$, Student's t -test). **m** Curvature 12 h after seedlings with whole or cut root tips were placed on hydrotropism plates without or with a water potential gradient. Hydrotropism assays were performed using the split-agar assay with 400 mM sorbitol. $n = 16-27$. Asterisks indicate statistically significant differences (* $p < 0.01$, Student's t -test, ns – not significant).



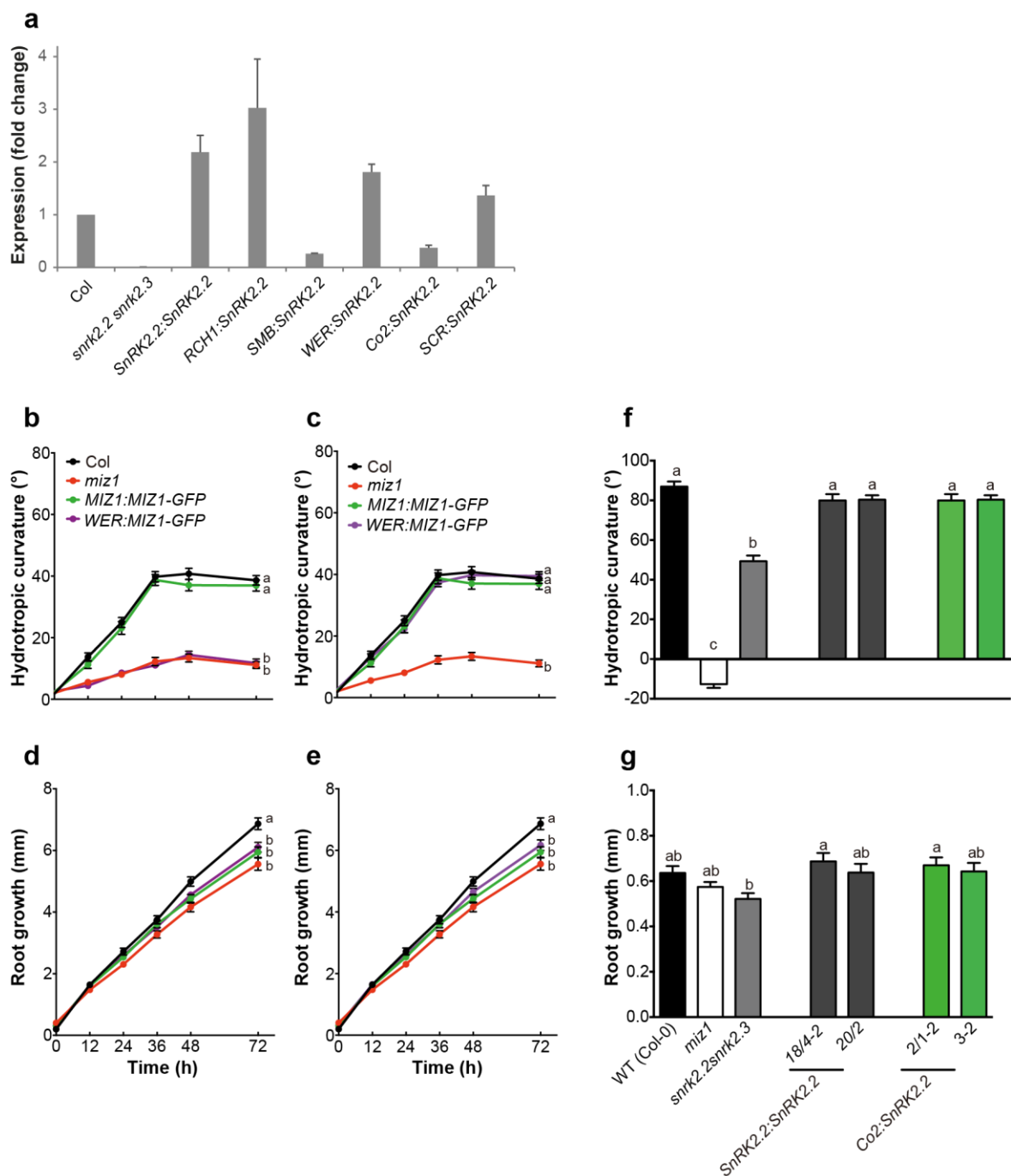
Supplementary Figure 3 Root tip angle of the hydrotropism response is not dependent on root growth rate

a – h Relationship of hydrotropic bending to growth rate. All assays used split-agar system with 0.5x MS or 0.5x MS plus 400 mM sorbitol in the bottom half of the plate. **a** Root length at the start of the assay. Values are mean \pm SD, $n = 20$. **b** Growth rate over the 12 h period of the assay. Values are mean \pm 2x SEM, $n = 20$. **c** Kinetics of growth during the assay for *snrk2.2 snrk2.3* seedlings. Values are mean \pm 2x SEM, $n = 20$. **d** Hydrotropic curvature of 3 (red line) and 5 (blue line) day-old wild type roots after transfer of seedlings to split-agar plates with 400 mM sorbitol. Values are mean \pm 2x SEM, $n = 32-36$. **e** Root length of the same seedlings as in (d), measured at the start of the assay. Values are mean \pm SD, $n = 36$. **f** Growth rate of the same seedlings as in (d) over 12 h period of the assay. Values are mean \pm SD, $n = 36$. **g – h** Images of (g) 3 and (h) 5 day-old seedlings at the start of the assay, scale bar = 5 mm. Asterisks indicate statistically significant differences (* $p < 0.01$, Student's t -test).



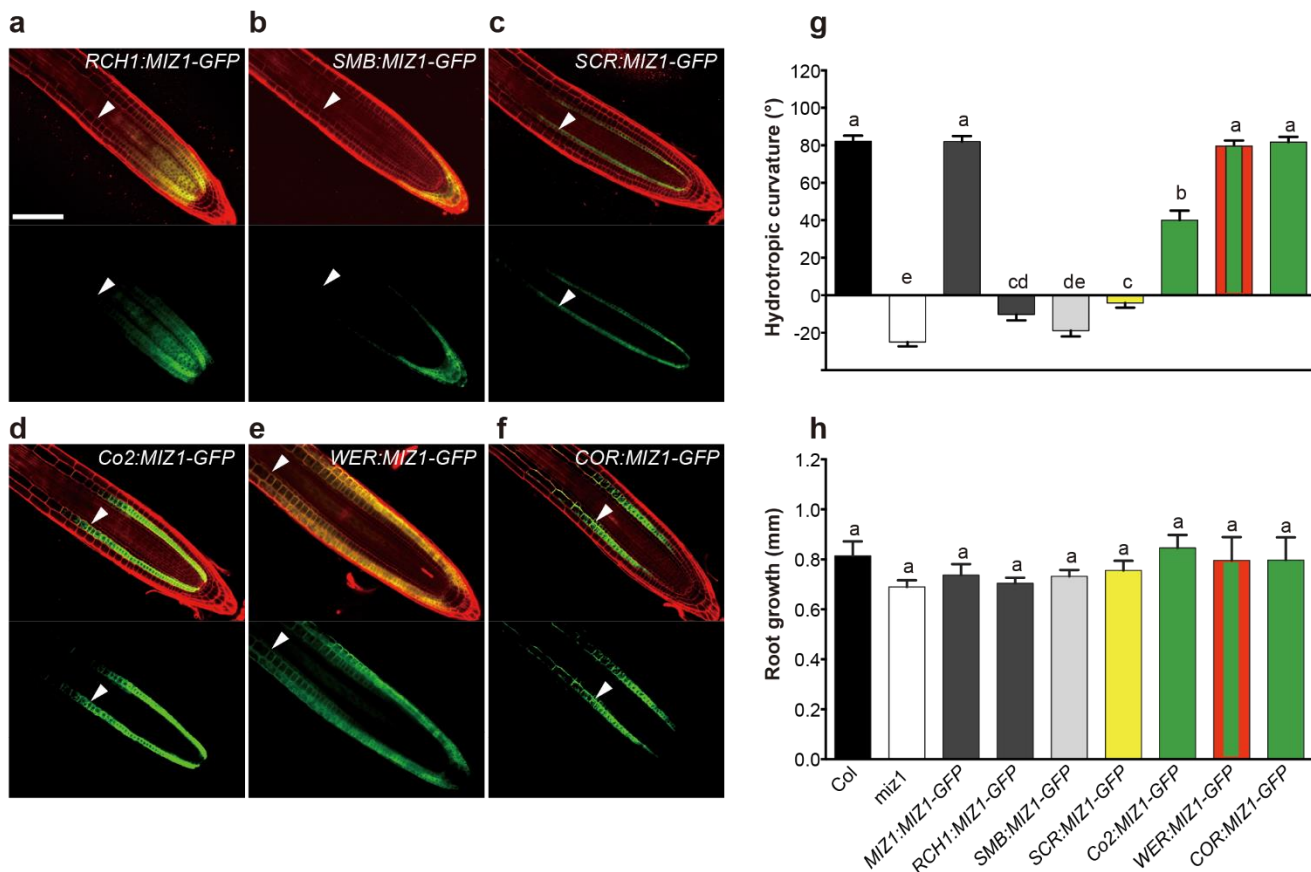
Supplementary Figure 4 The SnRK2.2-GFP fusion protein partially complements the ABA signalling defect of the *snrk2.2 snrk2.3* mutant

a – c Root growth response to ABA. Images of Col, *snrk2.2 snrk2.3* (2.2/2.3) and *snrk2.2 snrk2.3* complemented with a *SnRK2.2:SnRK2.2-GFP* fusion (6.1) seedlings 6 days after transfer to plates (a) without and (b) with 10 μ M ABA. **c** Root growth of seedlings 6 days after transfer, three independent *SnRK2.2:SnRK2.2-GFP* lines (1.1, 5.1 and 6.1) were tested. Values are mean \pm 2x SEM, $n = 7-28$. **d** Hydrotropic curvature on split-agar plates with 400 mM sorbitol, mean \pm 2x SEM, $n = 54$. **e** Hydrotropic curvature and (f) root growth using the moisture gradient in air assay. Values are mean \pm SEM, $n = 31-49$. Different letters in c – f indicate statistically significant differences ($p < 0.05$, Tukey HSD test).



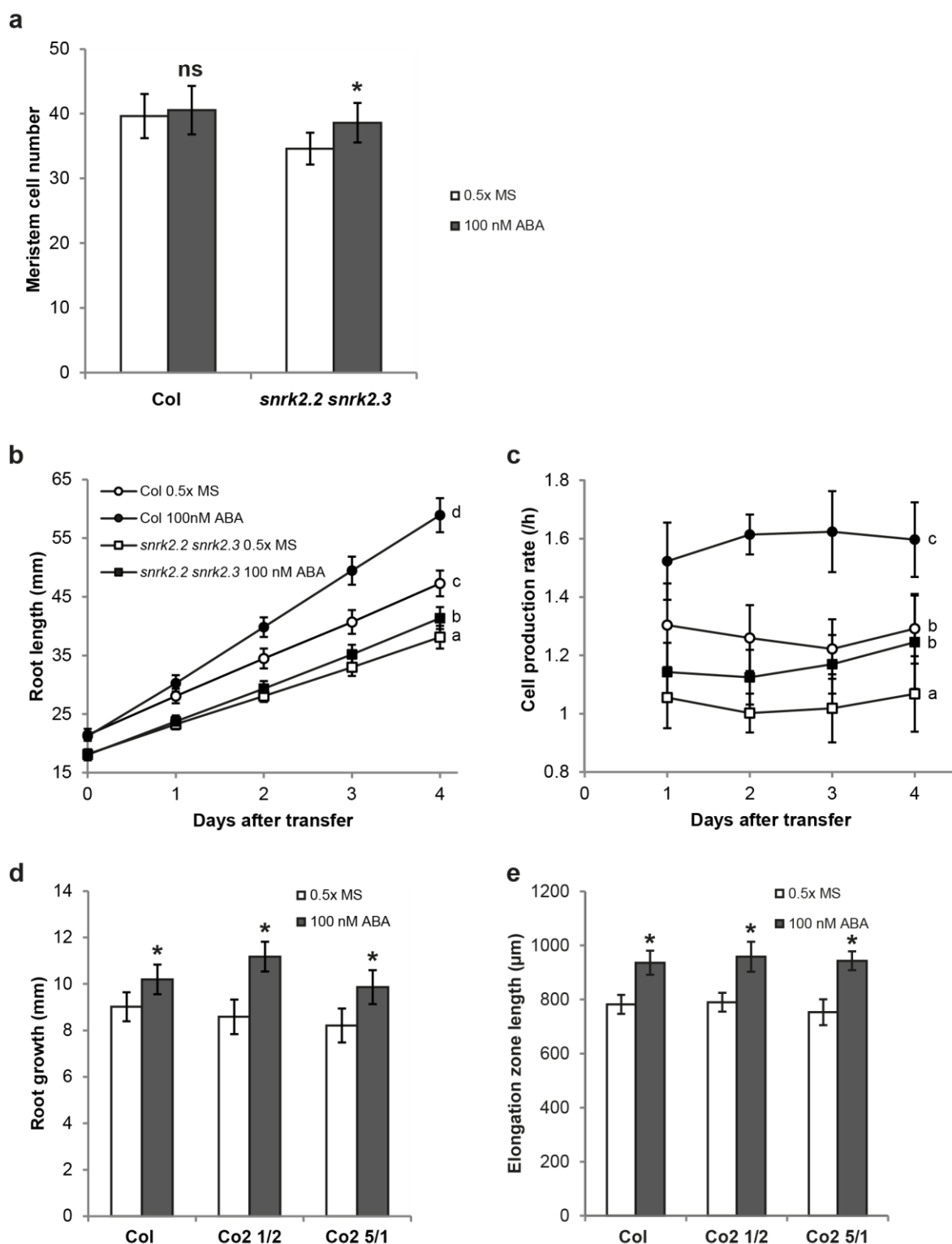
Supplementary Figure 5 *SnRK2.2* expression in complementation lines and additional hydrotropism assays for complementing lines

a mRNA levels of *SnRK2.2* in Col, *snrk2.2 snrk2.3* and complementation lines quantified by RT-qPCR. Values are mean \pm SEM of three biological replicates and have been normalised to expression in Col. **b**, **c** Hydrotropic curvature and **d**, **e** root growth of *WER:MIZ1-GFP* and *PIN2:MIZ1-GFP* complementation lines using the split-agar assay with 812 mM sorbitol. Values are mean \pm SEM, $n = 39-56$. Different letters indicate statistically significant differences at 72 h after hydrostimulation ($p < 0.05$, Tukey HSD test). **f** Hydrotropic curvature and **g** root growth of *SnRK2.2* and *Co2* complementation lines 12 h after start of the moisture gradient in air assay. Values are mean \pm SEM, $n = 31-49$. Different letters indicate statistically significant differences ($p < 0.05$, Tukey HSD test).



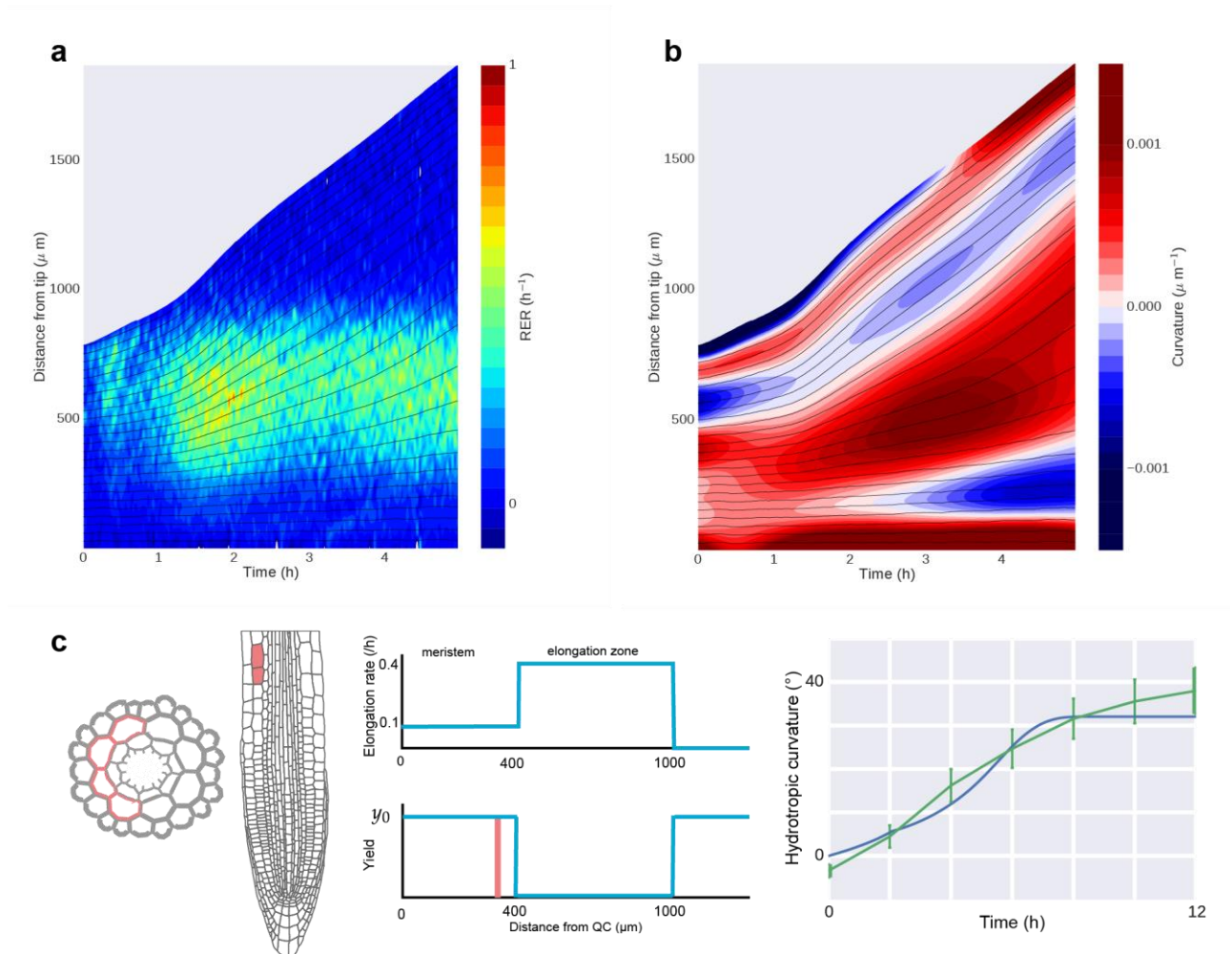
Supplementary Figure 6 MIZ1-GFP expression in the cortex is able to rescue the hydrotropic response of *miz1* roots

a-f Confocal laser scanning microscope images of roots expressing MIZ1-GFP fusion protein under control of the (a) *RCH1*, (b) *SMB*, (c) *SCR*, (d) *Co2*, (e) *WER* and (f) *COR* promoters with *MIZ1* terminator. Cell walls were stained with propidium iodide (red). Arrowhead indicates the approximate rootward boundary of the elongation zone, scale bar = 100 μ m. **g** Hydrotropic curvature and **h** root growth 12 h after start of the moisture gradients in air assay. Values are mean \pm SEM of three independent experiments, $n = 29-110$. Different letters indicate statistically significant differences ($p < 0.05$, Tukey HSD test).



Supplementary Figure 7 Effects of 100 nM ABA on root growth

a Meristem cell number 24 h after start of treatment without (light bars) and with 100 nM ABA (grey bars). Values are mean \pm SD, $n = 10-28$. Asterisks indicate statistically significant differences (* $p < 0.01$, Student's t -test); ns not statistically significant. **b** Root length and (**c**) cell production rates in response to 100 nM ABA. Values are mean \pm SD, $n = 20$. Different letters indicate statistically significant differences at 4 days after transfer ($p < 0.05$, Tukey HSD test). **d** Root growth and (**e**) elongation zone length in response to 100 nM ABA of Col and two independent *Co2:SnRK2.2* lines. Values are (d) mean \pm SD, $n = 15$ and (e) mean \pm 2x SEM, $n = 10$. Asterisks indicate statistically significant differences (* $p < 0.01$, Student's t -test).



Supplementary Figure 8 Changes in root growth in response to hydrotropism

a Relative elongation rate and **b** curvature of a hydrotropically bending root during the first 5 h after transfer to a split-agar plate with 400 mM sorbitol. Solid lines show the trajectories of points equally spaced at time zero. Representative data from four independent repeats shown.

c Modelling the hydrotropism response: The transition between the meristem and elongation zone is marked by a drop in yield stress leading to a rise in elongation rate (centre); the large yield stress y_0 in the meristem inhibits cell expansion; cortical cells on the dry side of the root (pink in transverse and axial cross-sections, left) enter elongation early for the first 2 h, with asymmetric softening across the root generating a bend. Simulated (blue) and experimental (green) hydrotropic curvature profiles are compared (right).

Supplementary Methods

Plant material and growth conditions

The accession used for all experiments in this study is *Arabidopsis thaliana* Columbia-0 (Col-0). Plants were grown in a controlled environment room (22°C/18°C), with a 16h light 8h dark photoperiod regime at 150 $\mu\text{mol m}^{-2} \text{s}^{-1}$ in compost (M3, Levington). For detailed root growth assays, seeds were surface sterilized with 0.25% - 50% (v/v) sodium hypochlorite and 0.01% (v/v) Triton X-100, washed three times with sterile water and sown on plates with 0.5x Murashige and Skoog (MS) medium (Sigma) with or without 0.4% (w/v) sucrose and solidified with either 0.3% (w/v) gellan gum (Sigma) or 1% (w/v) Bactoagar (Difco). After two days at 4° C in the dark, plates were placed vertically in a growth room at 22-23°C with continuous light at 100-150 $\mu\text{mol m}^{-2} \text{s}^{-1}$.

Complementation of *snrk2.2 snrk2.3*

To construct the *SnRK2.2:SnRK2.2-GFP* transgene, a fragment comprising 2 kb upstream of the ATG start codon plus the *SnRK2.2* coding sequence was amplified from *A. thaliana* genomic DNA by PCR, cloned into pCR8/GW/TOPO TA (Life Technologies) and verified by sequencing. Next, it was recombined by Gateway LR reaction into pGWB404 destination vector¹.

For tissue-specific complementation of the *snrk2.2 snrk2.3* mutant the coding sequence (including introns) of *SnRK2.2* was amplified from *A. thaliana* genomic DNA by PCR (Phusion, New England Biolabs) with an XhoI site at the 5' and a PstI site at the 3' end. The promoter sequences of *SnRK2.2*, *RCH1*², *SMB*³ and *WER*⁴ were amplified with a KpnI at the 5' and an XhoI site at the 3' end. PCR products were ligated into the pGEM-T Easy vector (Promega) and verified by sequencing. The coding sequence of *SnRK2.2* was cut with XhoI and PstI from pGEM-T Easy and ligated into the same sites of the vector pG0229-T⁵. The resulting vector was then opened with KpnI and XhoI and ligated with the *SnRK2.2*, *RCH1*, *SMB* or *WER* promoter sequences which had been excised from pGEM-T Easy with the same enzymes. The *Co2*⁶ and *SCR*⁷ promoters were excised with PstI/KpnI and SalI/BamHI from vectors BJ36-pCo2⁶ and pE11SCR::GAI(gai):YFP⁸ respectively, made blunt with T4 DNA polymerase and then ligated into the XhoI site of pG0229-T containing the *SnRK2.2* coding sequence.

Constructs were transferred to *A. tumefaciens* GV3101 pMP90 by electroporation and used to transform *snrk2.2 snrk2.3* plants by floral dipping as described previously⁹. At least two independent homozygous T₃ lines were used for root growth and hydrotropism assays.

Complementation of *miz1*

The sequences of *RCH1*, *SMB*, *SCR*, *WER*, *COR*, and *Co2* promoters were amplified from the pG0229-T vectors described above with forward and reverse primers containing *Acc65I* and *EagI* restriction sites, respectively (Supplementary Table 1). For constructs with tissue-specific promoters, the *MIZ1* promoter region of a *MIZ1:MIZ1-GFP* construct previously reported¹⁰ was replaced with those tissue-specific promoters. For constructing *WER:MIZ1-GFP* (-HSPter) and *PIN2:MIZ1-GFP* (-HSPter), three DNA fragments, namely promoter regions of *WER* and *PIN2* as well as coding region of *MIZ1-GFP*, were PCR-amplified and then cloned into pRI201 vector using In-Fusion Cloning kit (Clontech). All constructs were introduced into *A. tumefaciens* (strain GV3101 or LBA4404) by freeze/thaw shock method and transformed into *miz1* mutants with the floral dip method. Selection of transformed plants was performed on the half-strength MS medium with 0.4% sucrose supplemented with 50 µg/ml kanamycin, 100 µg/mL carbenicillin and 20 µg/L benomyl. PCR amplification method was adopted to confirm the presence of transgenes.

Tissue-specific overexpression of *SIAMESE*

A GAL4-VP16 driven transactivation system¹¹ was used to co-express SIM and a nuclear-localised GFP marker specifically in either epidermis, cortex, or endodermis. The pUAS-SIM construct was obtained by multisite Gateway cloning combining pDONR221-SIM (kindly provided by John Larkin¹²), pEN-L4-UAS-R1 (gateway.psb.ugent.be) and pH7m24GW,³¹³. For the endodermis, cortex and atrichoblast marker lines the promoters of *En7*, *Co2* and *GL2* were cloned^{6,14}. A 1220bp *En7*, 550bp *Co2* and 2066bp *GL2* promoter fragment was PCR amplified, cloned into the pDONR-P4-P1R vector and verified by sequencing. The latter vectors were recombined with pK9-H2AF-UAS-7m24GW (gateway.psb.ugent.be) and pDONR-L1-GAL4-VP16-R2 (kindly provided by Wim Grunewald) to obtain pEn7-GAL4—pUAS-H2AF, pCo2-GAL4—pUAS-H2AF and pGL2-GAL4—pUAS-H2AF respectively. The obtained vectors were transferred to *A. tumefaciens* strain C58C1 pMP90, which was used to transform *A. thaliana* Col-0.

The En7>>SIM, Co2>>SIM and GL2>>SIM lines were generated by pollinating homozygous pUAS-SIM lines with homozygous lines bearing the pEn7-GAL4—pUAS-H2AF, pCo2-GAL4—pUAS-H2AF and pGL2-GAL4—pUAS-H2AF constructs. Two independent pUAS-SIM lines were used for crossing and all experiments were performed with F₁ seeds from these crosses.

Confocal laser scanning microscopy

Cell walls of root tips were stained with 5 µg/mL propidium iodide (Molecular Probes, Sigma). Images were taken with a Leica SP5 microscope (Leica Microsystems Ltd) or

Olympus FV-1000 (Olympus) using the 488 nm laser for excitation and collecting emitted light at 500-550 nm (GFP) and 610-665 nm (propidium iodide).

Quantitative RT-PCR

Total RNA was extracted from 5 day-old excised root tips (root tip to first visible root hair bulge, $n = 100$) using the RNeasy Plus Micro kit with genomic DNA eliminator columns (Qiagen). Poly(dT) cDNA was prepared from total RNA using the RevertAid first strand cDNA synthesis kit (Thermo Scientific). Quantitative PCR was performed using SYBR Green Sensimix (Bioline) on a LightCycler 480 machine (Roche). Quantification of *SnRK2.2* expression was performed with primers specific to the 3' region of the gene, with expression levels normalised to the ubiquitin-associated gene UBA (At1g04850). All primer sequences can be found in supplementary table 1.

Ploidy measurements of root tissues

Tissue-specific ploidy measurements were obtained via flow cytometric analysis of nuclear-tagged *Arabidopsis thaliana* GFP marker lines.

24 hours after transfer of five-day-old plants to 100 nM ABA and MS standard media, root tips of approximately 0.5 cm length were excised and used for nuclear extraction. Root tips were chopped with a razor blade in 200 μ L of nuclei extraction buffer¹⁵ containing 45 mM MgCl₂, 30 mM sodium citrate, and 20 mM 3- morpholinopropane-1-sulfonic acid, pH 7.0 for 2 min, then filtered through a 50- μ m nylon filter. The DNA was stained with 1 mg/ml DAPI (4',6-diamidino-2-phenylindole)¹⁶. Nuclei were measured using a CyFlow Flow Cytometer (Partec) excited by illumination at 395 nm, and equipped with an additional 488 nm laser to excite and detect GFP-specific fluorescence. The DNA content of cells was derived from DAPI fluorescence measurements using FloMax software (Partec).

Microdissection of root tips

24 hours before hydrotropism assays were performed, four-day-old plants were transferred to sterile 100 μ m nylon mesh (Clarcor) on 0.5x MS plates to facilitate root dissection. 1 hour before transfer to hydrotropism assay plates, approximately 250 μ m of the distal region of the root tip were excised manually. After transfer to mesh and excision, plates were returned to the controlled environment room for recovery.

Statistical analysis

Statistical analysis of data was performed using Excel (Microsoft), KaleidaGraph (Synergy Software) and GenStat (VSN International).

Measuring root bending kinetics

More detailed measurements of root bending kinetics were obtained using a pipeline which extended upon existing methods¹⁷⁻²². Roots were imaged on hydrotropism assay plates using an adapted brightfield microscope (Zeiss AxioStar Plus, Carl Zeiss Ltd.) as detailed previously²³. Time-lapse images were acquired under near-infrared illumination using a machine vision camera connected to the microscope (Stingray F-504B, Allied Vision Technologies GmbH). Images were taken at 2 minute intervals for 5 hours using custom software written using LabVIEW System Design Software (National Instruments Corporation). To estimate root motion, the optical flow field between successive image frames was generated by the DeepFlow algorithm²⁴. In each frame, roots were separated from the background using a level set method²⁵, some parts of which were adapted from other work (<https://code.google.com/archive/p/ofeli/>)²⁶. After eliminating all background noise, root hairs were removed using a “rolling ball” algorithm²⁷, and root boundaries were smoothed by the opening operation. Root midlines for each frame were obtained by calculating the longest path between two end nodes through the skeleton obtained from the medial axis transform. Further details of these steps can be found in Supplementary Note 2. To measure distances from a biologically relevant landmark, the approximate position of the root quiescent centre (QC) was manually specified in the first frame of the image sequence, and then tracked through the rest of the image sequence using the optical flow velocity fields. Midlines from skeletonization were adjusted to end at the QC in each frame. Relative motion between camera and plate was determined using the average of the optical flow field over a section of the image away from the root, and used to stabilize the midline profiles. Smoothed midline profiles were obtained using bivariate spline interpolation of the y-pixel positions over all frames²⁸. Curvature and distance along the midline were calculated from these smoothed midlines; relative elongation rates at points along the midline were calculated using

$$RER = \mathbf{t} \cdot \frac{1}{2} (\nabla \mathbf{u} + \nabla \mathbf{u}^T) \mathbf{t}$$

where \mathbf{t} is the local tangent to the midline, and $\nabla \mathbf{u}$ the gradient of the vector flow velocity field at that point.

Code availability

All computer code generated for this study is freely available at github.

<https://github.com/tuanthng/RootAnalysis>

<https://github.com/jfozard/hydrotropism-estimates>

References

- 1 Nakagawa, T. *et al.* Improved Gateway binary vectors: high-performance vectors for creation of fusion constructs in transgenic analysis of plants. *Bioscience, Biotechnology, and Biochemistry* **71**, 2095-2100, doi:10.1271/bbb.70216 (2007).
- 2 Casamitjana-Martinez, E. *et al.* Root-specific CLE19 overexpression and the sol1/2 suppressors implicate a CLV-like pathway in the control of *Arabidopsis* root meristem maintenance. *Current Biology : CB* **13**, 1435-1441 (2003).
- 3 Willemsen, V. *et al.* The NAC domain transcription factors FEZ and SOMBRERO control the orientation of cell division plane in *Arabidopsis* root stem cells. *Developmental Cell* **15**, 913-922, doi:10.1016/j.devcel.2008.09.019 (2008).
- 4 Lee, M. M. & Schiefelbein, J. WEREWOLF, a MYB-related protein in *Arabidopsis*, is a position-dependent regulator of epidermal cell patterning. *Cell* **99**, 473-483 (1999).
- 5 Footitt, S. *et al.* The COMATOSE ATP-binding cassette transporter is required for full fertility in *Arabidopsis*. *Plant Physiol* **144**, 1467-1480, doi:10.1104/pp.107.099903 (2007).
- 6 Heidstra, R., Welch, D. & Scheres, B. Mosaic analyses using marked activation and deletion clones dissect *Arabidopsis* SCARECROW action in asymmetric cell division. *Genes & Development* **18**, 1964-1969, doi:10.1101/gad.305504 (2004).
- 7 Wysocka-Diller, J. W., Helariutta, Y., Fukaki, H., Malamy, J. E. & Benfey, P. N. Molecular analysis of SCARECROW function reveals a radial patterning mechanism common to root and shoot. *Development* **127**, 595-603 (2000).
- 8 Ubeda-Tomas, S. *et al.* Root growth in *Arabidopsis* requires gibberellin/DELLA signalling in the endodermis. *Nature Cell Biology* **10**, 625-628, doi:10.1038/ncb1726 (2008).
- 9 Dietrich, D. *et al.* Mutations in the *Arabidopsis* peroxisomal ABC transporter COMATOSE allow differentiation between multiple functions in planta: insights from an allelic series. *Molecular Biology of the Cell* **20**, 530-543, doi:10.1091/mbc.E08-07-0745 (2009).
- 10 Moriwaki, T. *et al.* Hormonal regulation of lateral root development in *Arabidopsis* modulated by MIZ1 and requirement of GNOM activity for MIZ1 function. *Plant Physiol* **157**, 1209-1220, doi:10.1104/pp.111.186270 (2011).
- 11 Haseloff, J. in *Methods in Cell Biology* Vol. 58 (eds K.F. Sullivan & S.A. Kay) Ch. 9, 139-151 (Academic Press, 1999).
- 12 Churchman, M. L. *et al.* SIAMESE, a plant-specific cell cycle regulator, controls endoreplication onset in *Arabidopsis thaliana*. *The Plant Cell* **18**, 3145-3157, doi:10.1105/tpc.106.044834 (2006).
- 13 Karimi, M., Bleys, A., Vanderhaeghen, R. & Hilson, P. Building blocks for plant gene assembly. *Plant Physiol* **145**, 1183-1191, doi:10.1104/pp.107.110411 (2007).
- 14 Szymanski, D. B., Jilk, R. A., Pollock, S. M. & Marks, M. D. Control of GL2 expression in *Arabidopsis* leaves and trichomes. *Development* **125**, 1161-1171 (1998).
- 15 Galbraith, D. W., Harkins, K. R. & Knapp, S. Systemic endopolyploidy in *Arabidopsis thaliana*. *Plant Physiol* **96**, 985-989 (1991).
- 16 Zhang, C., Gong, F. C., Lambert, G. M. & Galbraith, D. W. Cell type-specific characterization of nuclear DNA contents within complex tissues and organs. *Plant Methods* **1**, 7, doi:10.1186/1746-4811-1-7 (2005).
- 17 Walter, A. *et al.* Spatio-temporal dynamics of expansion growth in roots: automatic quantification of diurnal course and temperature response by digital image sequence processing. *Journal of Experimental Botany* **53**, 689-698 (2002).
- 18 Chavarria-Krauser, A. *et al.* Spatio-temporal quantification of differential growth processes in root growth zones based on a novel combination of image sequence

- processing and refined concepts describing curvature production. *New Phytologist* **177**, 811-821, doi:10.1111/j.1469-8137.2007.02299.x (2008).
- 19 van der Weele, C. M. *et al.* A new algorithm for computational image analysis of deformable motion at high spatial and temporal resolution applied to root growth. Roughly uniform elongation in the meristem and also, after an abrupt acceleration, in the elongation zone. *Plant Physiol* **132**, 1138-1148 (2003).
- 20 Shih, H. W., Miller, N. D., Dai, C., Spalding, E. P. & Monshausen, G. B. The receptor-like kinase FERONIA is required for mechanical signal transduction in *Arabidopsis* seedlings. *Current Biology : CB* **24**, 1887-1892, doi:10.1016/j.cub.2014.06.064 (2014).
- 21 Miller, N. D., Parks, B. M. & Spalding, E. P. Computer-vision analysis of seedling responses to light and gravity. *The Plant Journal* **52**, 374-381, doi:10.1111/j.1365-313X.2007.03237.x (2007).
- 22 Basu, P., Pal, A., Lynch, J. P. & Brown, K. M. A novel image-analysis technique for kinematic study of growth and curvature. *Plant Physiol* **145**, 305-316, doi:10.1104/pp.107.103226 (2007).
- 23 Wells, D. M. *et al.* Recovering the dynamics of root growth and development using novel image acquisition and analysis methods. *Philosophical Transactions of the Royal Society of London. Series B, Biological Sciences* **367**, 1517-1524, doi:10.1098/rstb.2011.0291 (2012).
- 24 Weinzaepfel, P., Revaud, J., Harchaoui, Z. & Schmid, C. DeepFlow: Large displacement optical flow with deep matching. *Ieee I Conf Comp Vis*, 1385-1392, doi:10.1109/lccv.2013.175 (2013).
- 25 Shi, Y. G. & Karl, W. C. Level set methods for dynamic tomography. *2004 2nd Ieee International Symposium on Biomedical Imaging: Macro to Nano, Vols 1 and 2*, 620-623 (2004).
- 26 Şuta, L., Bessy, F., Veja, C. & Vaida, M.-F. in *Intelligent Computer Communication and Processing (ICCP), 2012 IEEE International Conference on*. 181-187 (IEEE).
- 27 Vandenboomgaard, R. & Vanbalen, R. Methods for Fast Morphological Image Transforms Using Bitmapped Binary Images. *Cvgip-Graph Model Im* **54**, 252-258, doi:Doi 10.1016/1049-9652(92)90055-3 (1992).
- 28 Dierckx, P. *Curve and surface fitting with splines*. (Clarendon, 1993).

Table S1 Oligonucleotides used in this study, sequence in 5' to 3' direction

Oligonucleotides for <i>snrk2.2 snrk2.3</i> complementation		
	forward oligonucleotide	reverse oligonucleotide
SnRK2.2-GFP fusion		
SnRK2.2	ACATATTTGAGTGCAGTACAACGC	GAGAGCATAACTATCTCTCCACT
tissue-specific expression		
RCH1 promoter	GGTACCCAGAACATACATCATCAAAGAATATCAT	CTCGAGAAGAGTTTTTTTCTTTGCATTGCTC
SnRK2.2 promoter	GGTACCCAGTACAACGCAATCCACGATTTTG	CTCGAGTTTTTCTGATTCTTCTCTTCTCTAT
SMB promoter	GGTACCTCGTTGAAGATGCCTGGATTTAATACTG	CTCGAGTATCCTTACTCTTCTTTAAGCAAACCTT
WER promoter	GGTACCTTCCGACCTTAAAGCTCCTACAAAAACATGAAGAT	CTCGAGTCTTTTTGTTTCTTTGAATGATAGACGAGAGAT
SnRK2.2	CTCGAGATGGATCCGGCGACTAATTCACCGAT	CTGCAGTCAGAGAGCATAACTATCTCTTCCACTAC
Oligonucleotides for SIM overexpression		
En7	GCTCCATTAGTCCATATACACAGTTGAC	TTAAGATTCTGAGATTCACGAAGAAAAGCAGC
Co2	TAATCCATTATTTACGACTGTGCCACTCT	AAACTCTTGTTGCATTATTGTCAAATCCTT
GL2	GACCTAAGTTTCCTTCACTATACG	ACAAATCCTGTCCCTAGCTAGC
Oligonucleotides for <i>miz1</i> complementation		
tissue-specific MIZ1-GFP expression with HSP terminator		
WER promoter	CCAAGCTTGCATGCCTGCAGGGTCTTTCTTTATCTTCTC	TTGGTATGGCACCATTCTTTTTGTTTCTTTGAATG
MIZ1 for WER promoter	AAAGAAACAAAAAGAATGGTGCCATACCAAGAACT	CTTCATCTTCATAAGAGCTCTCAAATTCTCTTTAAAACC
PIN2 promoter	CCAAGCTTGCATGCCTGCAGCATCCTGTTTTATCAGGCTA	TTGGTATGGCACCATTTTGATTACTTTTTCCGGC
MIZ1 for PIN2 promoter	AAAAAGTAAATCAAAATGGTGCCATACCAAGAACT	CTTCATCTTCATAAGAGCTCTCAAATTCTCTTTAAAACC
tissue-specific MIZ1-GFP expression with MIZ1 terminator		
RCH1 promoter	CAGTGGTACCCAGAACATACATCATCAAAGAATATC	GCTACGGCCGAAGAGTTTTTTCTTTGCATTGCG
SMB promoter	CAGTGGTACCTCGTTGAAGATGCCTGGATTTAATAC	GCTACGGCCGTATCCTTACTCTTCTTTAAGCAAAC
SCR promoter	CAGTGGTACCAATTTTGAATCCATTCTCAAAGCTTTG	GCTACGGCCGGGAGATTGAAGGGTTGTTGGTCGTGAG
Co2 promoter	CAGTGGTACCTAACTCCATTATTTACGACTGTGCC	GCTACGGCCGAAACTCTTGTTGCATTATTGTCAAATC
WER promoter	CAGTGGTACCTTCCGACCTTAAAGCTCCTACAAAAAC	GCTACGGCCGTCTTTTTGTTTCTTTGAATGATAGAC
COR promoter	CAGTGGTACCCGTGCGGTCAAATAACAGAAGAAATG	GCTACGGCCGGGTTTTGGCTAATGTGATTGTGTAG
Oligonucleotides for qRT-PCR		
SnRK2.2	GGAGCTTATCCATTTCGAGGA	CCTCTGGGATCGAGTATGTGA
UBA	AGTGGAGAGGCTGCAGAAGA	CTCGGGTAGCACGAGCTTTA

Root hydrotropism is controlled via a cortex-specific growth mechanism - Supplementary Note 1

Daniela Dietrich, Lei Pang, Akie Kobayashi, John A. Fozard,
Véronique Boudolf, Rahul Bhosale, Regina Antoni, Tuan Nguyen,
Sotaro Hiratsuka, Nobuharu Fujii, Yutaka Miyazawa, Tae-Woong Bae,
Darren M. Wells, Markus R. Owen, Leah R. Band, Rosemary J. Dyson,
Oliver E. Jensen, John R. King, Saoirse R. Tracy, Craig J. Sturrock,
Sacha J. Mooney, Jeremy A. Roberts, Rishikesh P. Bhalerao,
José R. Dinneny, Pedro L. Rodriguez, Akira Nagatani,
Yoichiroh Hosokawa, Tobias I. Baskin, Tony P. Pridmore,
Lieven De Veylder, Hideyuki Takahashi and Malcolm J. Bennett

1 Estimating water potential gradients and ABA responses during hydrotropism

1.1 Model preliminaries

We wish to understand how hydrotropic responses are effected. The approach we adopt is a straightforward one, given that the mechanisms by which water potential is sensed, and how differences in growth rate are generated, are not fully understood.

We have observed that treatment of roots growing on plates without sorbitol with 100 nM ABA changed their growth rate from 6.23 mm/day to 8.28 mm/day (Figure 3). In the experiments of van der Weele [9], it was found (see Figure 3 of [9]) that plants growing on plates with small amounts of PEG (which is similar in effect to low levels of sorbitol) actually grew faster than on normal culture plates (Hoagland solution); roots in the presence of PEG (corresponding to an external water potential of -0.23MPa) grew at about 6mm/day, compared with roots on Hoagland solution (external water potential of -0.1MPa), which grew at about 5mm/day.

We are interested in how large an ABA gradient is needed to generate observed levels of root bending. From the measurements of root-tip angle (Figure 2b), we estimate that hydrotropic bending occurs at a rate of about 20 degrees in 6 hours, or slightly faster than 3 degrees per hour. We can make a

crude estimate of the difference in ABA concentration between cortical cells on the wet and dry sides of the root that is required to generate this observed rate of bending. We also wish to relate this to an estimate of the relative difference in water potential between the wet and dry sides of the root.

1.2 Estimate of water potential gradient

In the split agar-based hydrotropism assays, a cut is made in the agar plate and sorbitol-containing agar placed on one side of this cut. Using the diffusion equation, the sorbitol concentration (and consequently the water potential) can be calculated. From the solution of the diffusion equation, the sorbitol concentration c is found to be

$$c = C \operatorname{erfc} \left(\frac{x}{2\sqrt{Dt}} \right), \quad (1)$$

where x is distance from the cut, $C = 400\text{mM}$ is the initial concentration of sorbitol in the sorbitol-containing agar, the diffusion coefficient D is estimated as $D = 10^{-5}\text{cm}^2/\text{hr}$ from [5], and erfc denotes the complementary error function. The water potential Ψ is related to the sorbitol concentration by the van 't Hoff equation $\Psi = -ciRT$, where i is the van 't Hoff factor ($i \simeq 1$ for sorbitol, as it is not an electrolyte), $R = 8.314\text{ kPa M}^{-1}\text{ K}^{-1}$ is the gas constant and $T = 298\text{K}$ is room temperature; from this we find that 400mM sorbitol corresponds to a water potential of about -1MPa . Thus

$$\Psi = -A \operatorname{erfc} \left(\frac{x}{2\sqrt{Dt}} \right), \quad (2)$$

where $A \simeq 1\text{MPa}$. These estimates give a spatial distribution of water potential that is in good agreement with the experimental measurements of [8]. The root tip is placed approximately at 2.5mm from the cut in the plate at the start of the experiment. From evaluation of this water potential distribution (Figure S1) both sides of the root can be seen to be at similar external water potential, with the maximum absolute difference in water potential between the two sides of the root ($< 10\text{kPa}$, Figure S1(a)) being less than 3% of the maximum (absolute) water potential experienced at the root midline ($\simeq -400\text{kPa}$, Figure S1(b)).

1.3 Estimate of ABA gradient

In this calculation, we assume that the cortical cells are free to grow unimpeded by the neighbouring cells, both for straight growing roots treated with ABA and for roots undergoing hydrotropism (i.e. the other tissues exert no axial stresses, but simply keep the cortical cells separated by a constant distance). The bending rate of 3 degrees per hour is equivalent to 0.05 radians per hour.

From measurements of confocal images of *Arabidopsis thaliana* roots, the cortical cells on the wet and dry side of the root are separated by approximately $60\mu\text{m}$. Using this distance measurement, the estimate of the bending rate, and the formula for the circumference of a circular arc (Figure S2), we have that the

cortical cells on the dry side must be growing faster than the cortical cells on the wet side by $60 * 0.05 = 3\mu\text{m/hr} = 72\mu\text{m/day}$.

From the ABA application experiments, 100nM ABA application induced an increase in root growth of 2.05mm/day. Linearly interpolating, we find that the difference in ABA concentration between the two sides should be of the order of 4nM. This is a relatively small difference in ABA concentration, compatible with the idea that lateral ABA gradients are unlikely to be detectable using currently available experimental techniques. Taking 100nM as a physiologically relevant ABA concentration, this 4% difference between the two sides is in fact of the same order of magnitude as the relative difference in water potential between the two sides of the root.

2 Midline bending models

2.1 Model description

In the split-agar based hydrotropism assay, roots were grown on the surface of an agar gel and remained in contact with it throughout the experiment, so the geometry of a particular root can be represented by a two dimensional curve through its midline. A complete description of such a curve is supplied by the midline curvature, κ , and its stretch (logarithmic strain), ϵ_m . (We use the subscript m to indicate that this is the stretch of the midline; we will later consider the stretch in walls that are offset from the midline.) The evolution of these quantities (the rate of change of curvature, $\dot{\kappa}$, and the axial elongation rate, $\dot{\epsilon}_m$) can be related to the material properties of individual cell walls and to the cellular turgor pressures using a mechanical model based (in a sense indicated below) on that described by [3].

A representative transverse cross-section (perpendicular to the root midline) of an Arabidopsis root was used (based on Figure 1A of [1]). This was converted into a geometric template (Figure 4c), in which cells occupy polygonal regions, and the edges bounding each polygon represent cell walls. These cell walls can be thought of as one-dimensional lines lying in the two-dimensional plane of the cross-section; they will each have an associated thickness. The cross-section of the root was assumed to be uniform in the region of interest, and thicknesses h were assigned to each cell wall following the measurements of [3]; these are listed in Table S1(a).

Cell walls were treated as viscoplastic along the axis of the root, with kinematic viscosity, μ , and yield stress, y . As the diameter of the root is approximately constant shootwards of the lateral root cap, walls are considered to be inextensible in the transverse direction. This results in the geometry of the transverse cross-section remaining constant as the root elongates, and it was further assumed that the thickness of each wall segment, h , remains constant through the production of new wall material. The turgor pressure P was taken to be constant and the same within all cells.

Integrating over the wall thickness, an axial extensibility ϕ and yield Y was

associated with each wall section, namely

$$\phi = \frac{1}{4\mu h}, \quad Y = yh, \quad (3)$$

the factor of four in the axial extensibility being a consequence of the flow within an elongating viscous sheet [4]. Once we have integrated over the wall-thickness, we treat each wall as a one-dimensional line segment lying in the plane of the cross-section. Changes in the curvature of the midline are associated with walls at different distances from the midline having different axial elongation rates. A line segment parallel to the root axis, at fixed distance η from the midline of the root ($\eta > 0$ being the dry side of the root), can be found from geometrical considerations (see Section 2.5) to have elongation rate

$$\dot{\epsilon}(s, \eta, t) = \dot{\epsilon}_m - \dot{\kappa}\eta \quad (4)$$

where $\dot{\epsilon}_m$ is the elongation rate of the root midline (an approximation derived by taking the curvature to be small compared to the reciprocal of the radius of the root cross-section). In growing parts of the root, each wall section then exerts an axial tension force

$$T = Y + \phi^{-1}\dot{\epsilon} \quad (5)$$

per unit length in the transverse cross section, cf. [6]. It was assumed that the walls in each transverse cross section are either all in yield ($T > Y$), where the root is growing ($\dot{\epsilon}_m > 0$), or undergoing no stretching or bending in regions where the root is not growing ($\dot{\epsilon}_m = \dot{\kappa} = 0$).

From (5), each wall exerts an axial tension force

$$T = Y + \phi^{-1}(\dot{\epsilon}_m - \dot{\kappa}\eta) \quad (6)$$

per unit length in the cross-section, whilst the turgor pressure exerts an axial force P per unit area over the portion of the cross-section occupied by the cells. Provided there are no external forces acting on the root, the total force (parallel to the root midline) and moment (about the intersection of the midline and the cross section) must be zero over each transverse cross section; these conditions become

$$\int_w (\phi^{-1}\dot{\epsilon}_m + Y) dx - \dot{\kappa} \int_w \phi^{-1}\eta dx = PA, \quad (7)$$

$$\dot{\kappa} \int_w \phi^{-1}\eta^2 dx = \int_w (Y + \phi^{-1}\dot{\epsilon}_m) \eta dx, \quad (8)$$

where the subscript w denotes a line integral over all walls in the cross section, and x measures distance along each wall. If the stretching from curvature of the midline is small compared to the stretching from elongation of the midline, i.e $\dot{\kappa}H$ is small compared to $\dot{\epsilon}_m$, where H is the radius of the root, the second term

of the left hand side of (7) may be ignored, giving elongation and curvature generation rates

$$\dot{\epsilon}_m = \frac{P\mathcal{A} - \int_w Y dx}{\int_w \phi^{-1} dx}, \quad \dot{\kappa} = \frac{\int_w Y \eta dx + \dot{\epsilon}_m \int_w \phi^{-1} \eta dx}{\int_w \phi^{-1} \eta^2 dx}. \quad (9)$$

with \mathcal{A} being the area occupied by the cells in the cross section. These equations assume that the cross section is (approximately) symmetric about $\eta = 0$, such that

$$\int \eta dA \approx 0, \quad (10)$$

where this area integral is over the region in the cross-section occupied by the cells.

2.2 Mechanical properties of roots growing without hydrotropic gradient

A simplified, but representative, growth profile in the absence of a hydrotropic stimulus takes the form

$$\dot{\epsilon}_m(s) = \begin{cases} \dot{\epsilon}_1 & 0 \leq s < s_1 \\ \dot{\epsilon}_2 & s_1 \leq s < s_2 \\ 0 & s_2 \leq s \end{cases}, \quad (11)$$

as illustrated in Figure S3. Such a growth profile is based upon those measured by [7] and [2], although the transitions between different growth sections are made abrupt, which simplifies the model. Here s is distance along the root midline, measured from the tip of the root, $0 \leq s < s_1$ is the extent of the slowly growing zone in the root, encompassing the meristem and “transition zones”, $s_1 \leq s \leq s_2$ corresponds to the “elongation zone” within which cells undergo rapid expansion, and $s_2 \leq s$ is the “maturation zone” (in which root elongation has stopped).

Little is known about the variation in cell-wall material properties throughout the root: in the model here, changes in growth rate can be caused by changes in yield stress, extensibility, or in both quantities simultaneously. In earlier work on gravitropic bending [3], it was found that bending in regions of slow elongation is more likely to be generated by changes in wall yield stress. This can be seen in (9), where the term depending on wall extensibility has a prefactor of $\dot{\epsilon}_m$, unlike the term depending on wall yield. A plausible approach, adopted here, is to take both the wall viscosity and yield stress to be uniform within each cross section, so that $\mu \equiv \mu(s)$, $y \equiv y(s)$. The yield stress was taken constant within the meristem ($0 \leq s \leq s_1$), zero within the meristem ($s_1 < s \leq s_2$) and large elsewhere, whilst the extensibility was taken constant

within the growing portion of the root ($0 \leq s \leq s_2$); explicitly

$$y(s) = \begin{cases} y_0 & 0 \leq s \leq s_1 \\ 0 & s_1 < s \leq s_2 \\ \infty & s_2 < s \end{cases}, \quad \mu(s) = \begin{cases} \mu_0 & 0 \leq s \leq s_2 \\ \infty & s_2 < s \end{cases}. \quad (12)$$

The parameters μ_0 and y_0 were chosen such that the root adopts the growth profile (11), specifically

$$\mu_0 = \frac{P\mathcal{A}}{4\dot{\epsilon}_2 A_w}, \quad y_0 = \frac{P\mathcal{A} \left(1 - \frac{\dot{\epsilon}_1}{\dot{\epsilon}_2}\right)}{A_w}, \quad (13)$$

where the total area of walls in each transverse cross-section, A_w , was calculated using

$$A_w = \int_w h \, dx. \quad (14)$$

Although (in the absence of a hydrotropic gradient) the material parameters μ and y are uniform in each transverse cross-section, the resulting yields and extensibilities Y and ϕ are not the same for all wall sections, but depend on the thickness h of each individual wall through (3).

2.3 Modelling hydrotropic bending

It was assumed that, following a hydrotropic stimulus, cortical cells on the dry side of the root enter rapid elongation closer to the root apex than during normal growth, at $s = s_1 - \delta$ rather than at $s = s_1$, where $\delta > 0$ is chosen to be about three cortical cell-lengths (see Figure 4c, where the cortical cells undergoing early onset of elongation are indicated in pink). This corresponds to a change in the yield stresses of the cortical cell walls on the dry side, in the region $s_1 - \delta < s < s_1$, from $y = y_0$ to $y = 0$; the yield stress of the walls of the other cells in this region remains unchanged. It was assumed that this early entry into rapid elongation occurs for the period of time $0 \leq t \leq T$, subsequent to the roots being placed in the presence of a hydrotropic gradient. The parameters here are listed in Table S1(b).

By (9), the elongation rate of the root midline was given, for $0 \leq t \leq T$, by

$$\dot{\epsilon}(s) = \begin{cases} \dot{\epsilon}_1 & 0 \leq s < s_1 - \delta \\ \dot{\epsilon}_1 + (\dot{\epsilon}_2 - \dot{\epsilon}_1) \frac{1}{A_w} \int_{cw} h \, dx & s_1 - \delta \leq s < s_1 \\ \dot{\epsilon}_2 & s_1 \leq s < s_2 \\ 0 & s_2 \leq s \end{cases}, \quad (15)$$

where the subscript cw denotes integrals over the cortical cell walls on the dry side of the root $\eta > 0$.

In the region $s_1 - \delta \leq s < s_1$, we have that $y = y_0$ for all cell walls except those of the cortical cells on the dry side of the root. Using (3), (9) can be written as

$$\dot{\kappa} = \frac{\int_w y h \eta \, dx + 4\mu_0 \dot{\epsilon}_m \int_w h \eta \, dx}{4\mu_0 \int_w \eta^2 \, dx}, \quad (16)$$

and the symmetry assumption (20) allows this to be simplified to

$$\dot{\kappa} = -\frac{y_0}{4\mu_0} \frac{\int_{cw} h \eta \, dx}{\int_w \eta^2 \, dx}. \quad (17)$$

From (13),

$$\frac{y_0}{4\mu_0} = (\dot{\epsilon}_2 - \dot{\epsilon}_1), \quad (18)$$

from which it is found that curvature of the root midline generated at a rate

$$\dot{\kappa}(s) = \begin{cases} 0 & 0 \leq s < s_1 - \delta \\ -(\dot{\epsilon}_2 - \dot{\epsilon}_1) \frac{\int_{cw} h \eta \, dx}{\int_w h \eta^2 \, dx} & s_1 - \delta \leq s < s_1, \\ 0 & s_1 \leq s \end{cases} \quad (19)$$

the curvature in $s_1 - \delta \leq s < s_1$ having negative sign as the cortical cell walls on the dry side lie in $\eta > 0$. This calculation further assumed that the root template was approximately symmetrical, such that

$$\int_w h \eta \, dx \simeq 0. \quad (20)$$

Using the template shown in Figure 4c, and the cell-wall thicknesses listed in Table S1(a), we estimate the integrals appearing in (15) and (19) to be

$$\frac{1}{A_w} \int_{cw} h \, dx \simeq 0.11, \quad \frac{1}{A_w} \int_{cw} h \eta \, dx \simeq 2.8 \, \mu\text{m} \quad (21)$$

$$\frac{1}{A_w} \int_w h \eta^2 \, dx \simeq 1200 \, \mu\text{m}^2, \quad \frac{1}{A_w} \int_{cw} h \eta^2 \, dx \simeq 86 \, \mu\text{m}^2. \quad (22)$$

Using the parameter values in Table S1(b), we estimate the elongation and curvature rates within the zone of bending $s_1 - \delta \leq s < s_1$ to be

$$\dot{\epsilon}_m \simeq 0.13 \, \text{hr}^{-1} \quad \dot{\kappa} \simeq -0.0007 \, \text{radians } \mu\text{m}^{-1} \, \text{hr}^{-1}. \quad (23)$$

2.4 Numerical calculation of bending profiles

Whilst in some circumstances it is practical to calculate the bending pattern analytically [3], here the problem was treated numerically. The midline was initially taken to be straight, with length $L_0 \geq s_2$, and was split into N sections,

with lengths $l_n = L_0/N$ and curvatures $\kappa_n = 0$, for $n = 1, \dots, N$. Parameter values are listed in Table S1(c). These discrete variables evolve according to

$$\frac{d \log(l_n)}{dt} = \frac{1}{l_n} \int_{S_{n-1}}^{S_n} \dot{\epsilon}(\hat{s}, t) d\hat{s}, \quad \frac{d\kappa_n}{dt} = \frac{1}{l_n} \int_{S_{n-1}}^{S_n} \dot{\kappa}(\hat{s}, t) d\hat{s}, \quad (24)$$

where

$$S_0 = 0, \quad S_n = \sum_{m=1}^n l_m \quad (25)$$

for $n = 1, \dots, N$. Integration was performed using a simple forward Euler scheme (with variables $\log(l_n)$ and κ_n), approximating the integrals using the values of their integrands at the midpoints of each section,

$$l_n(t + \Delta t) = l_n(t) \exp \left(\dot{\epsilon} \left(\frac{S_{n-1} + S_n}{2}, t \right) \Delta t \right), \quad (26)$$

$$\kappa_n(t + \Delta t) = \kappa_n(t) + \Delta t \dot{\kappa} \left(\frac{S_{n-1} + S_n}{2}, t \right), \quad (27)$$

where Δt is the fixed timestep. Sections were split into two, each with half the length of the parent and the same curvature, when they exceeded a threshold length l_C , in order to maintain the spatial resolution of the simulation. The angle of the root-tip (relative to that at the basal end) was given by $\theta = -\sum_{m=1}^N l_m \kappa_m$, the negative sign being taken as the direction of the root tip is opposite to the direction of increasing s . Simulation results of tip angle against time are shown in Figure 2i.

2.5 Elongation rate of curves parallel to bending root midline

Here we give details of the derivation of the relationship (4) between the elongation rate $\dot{\epsilon}$ of a wall parallel to the root midline, and the bending and stretching rates ($\dot{\kappa}$, $\dot{\epsilon}_m$) of the root midline.

Consider a short curve of length l , at constant distance η from the midline of the root, measured in the direction of the normal to the midline \mathbf{n} (see Figure S4). Also assume for now that $\kappa > 0$. Then this curve has radius of curvature $\kappa^{-1} - \eta$, and subtends an angle $\kappa l / (1 - \kappa \eta)$ at the centre of curvature. It therefore projects onto a curve of length l_0 along the root midline, where l and l_0 are related through

$$l = (1 - \kappa \eta) l_0, \quad (28)$$

The same expression can be seen to hold for $\kappa \leq 0$. Differentiating (28) with

respect to time, the axial elongation rate of this curve is therefore given by

$$\begin{aligned}\dot{\epsilon}(s, \eta, t) &\equiv \frac{1}{l} \frac{dl}{dt} = \frac{1}{l_0(1 - \kappa\eta)} \left((1 - \kappa\eta) \frac{dl_0}{dt} - \dot{\kappa} l_0 \eta \right) \\ &= \frac{1}{l_0} \frac{dl_0}{dt} - \frac{\dot{\kappa} \eta}{1 - \kappa\eta} \\ &= \dot{\epsilon}_m - \frac{\dot{\kappa} \eta}{1 - \kappa\eta}.\end{aligned}\tag{29}$$

This can be approximated, again taking the limit $\kappa H \ll 1$, by

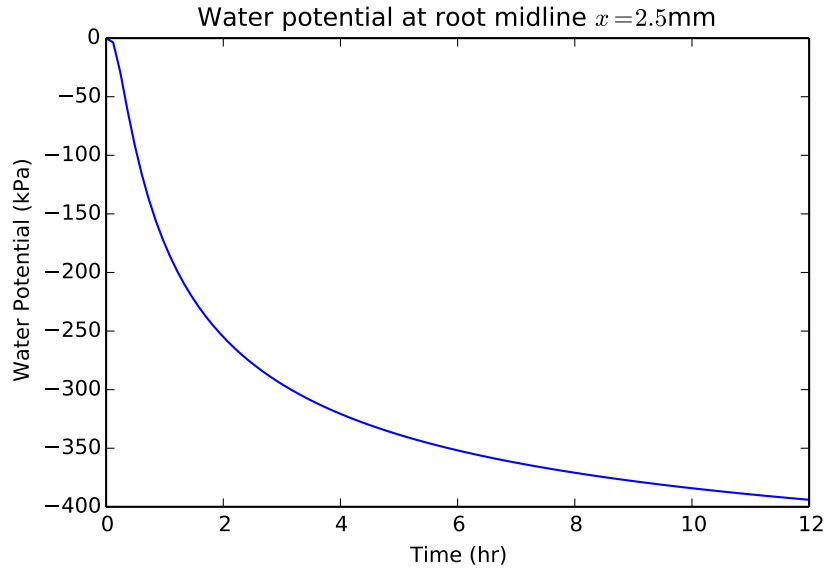
$$\dot{\epsilon}(s, \eta, t) = \dot{\epsilon}_m - \dot{\kappa} \eta.\tag{30}$$

References

- [1] I. Casimiro, A. Marchant, R. P. Bhalerao, T. Beeckman, S. Dhooge, R. Swarup, N. Graham, D. Inze, G. Sandberg, P. J. Casero, and M. Bennett. Auxin transport promotes Arabidopsis lateral root initiation. *Plant Cell*, 13:843–852, 2001.
- [2] A. Chavarria-Krauser, K. A. Nagel, K. Palme, U. Schurr, A. Walter, and H. Scharr. Spatio-temporal quantification of differential growth processes in root growth zones based on a novel combination of image sequence processing and refined concepts describing curvature production. *New Phytol.*, 177:843–852, 2008.
- [3] R. J. Dyson, G. Vizcay-Barrena, L. R. Band, A. N. Fernandes, A. P. French, J. A. Fozard, T. C. Hodgman, K. Kenobi, T. P. Pridmore, M. Stout, D. M. Wells, M. H. Wilson, M. J. Bennett, and O. E. Jensen. Mechanical modelling quantifies the functional importance of outer tissue layers during root elongation and bending. *New Phytol.*, 202:1212–1222, 2014.
- [4] RJ Dyson and OE Jensen. A fibre-reinforced fluid model of anisotropic plant cell growth. *J. Fluid Mech.*, 655:472–503, 2010.
- [5] L. Lebrun and G. A. Junter. Diffusion of sucrose and dextran through agar gel membranes. *Enzyme Microb. Technol.*, 15(12):1057–1062, Dec 1993.
- [6] J. A. Lockhart. An analysis of irreversible plant cell elongation. *J. Theor. Biol.*, 8:264–275, 1965.
- [7] W. S. Peters and T. I. Baskin. Tailor-made composite functions as tools in model choice: the case of sigmoidal vs bi-linear growth profiles. *Plant Methods*, 2:11, 2006.
- [8] N. Takahashi, N. Goto, K. Okada, and H. Takahashi. Hydrotropism in abscisic acid, wavy, and gravitropic mutants of Arabidopsis thaliana. *Planta*, 216:203–211, 2002.

- [9] C. M. van der Weele, W. G. Spollen, R. E. Sharp, and T. I. Baskin. Growth of *Arabidopsis thaliana* seedlings under water deficit studied by control of water potential in nutrient-agar media. *J. Exp. Bot.*, 51:1555–1562, 2000.

(a)



(b)

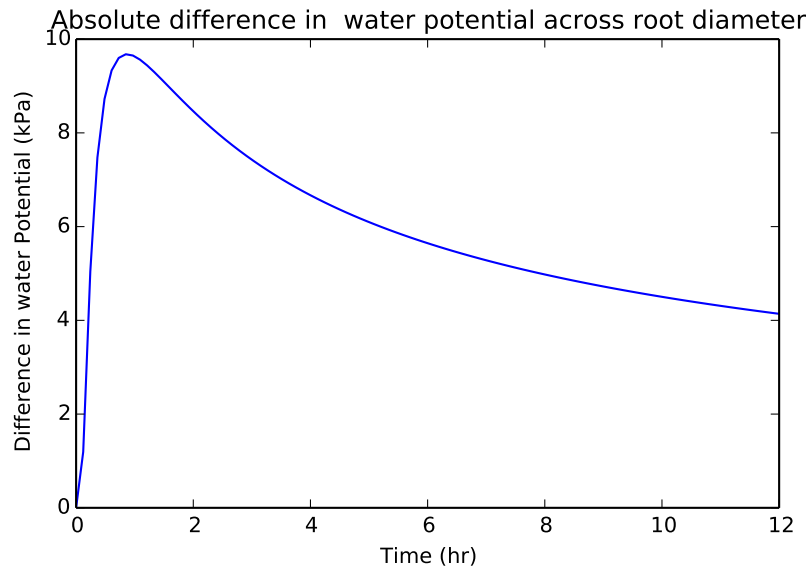


Figure S1: Water potential in the hydrotropism assay, calculated from equation (2). (a) Water potential at 2.5mm from the cut in the agar plate. (b) Absolute water potential difference between two points at $2.5\text{mm} - R$ and $2.5\text{mm} + R$ from the cut, where $R = 50\mu\text{m}$ is an estimate of root radius.

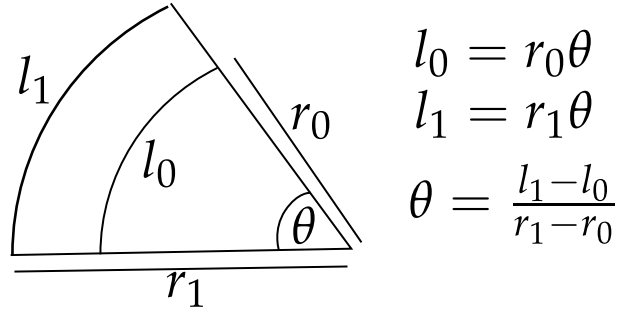


Figure S2: Relationship between bending angle, θ , and the difference in the lengths of the cortical cells on each side $l_1 - l_0$, where here $r_1 - r_0 \approx 60\mu\text{m}$ is the distance between the centres of the cortical cell files on the wet and dry side of the root.

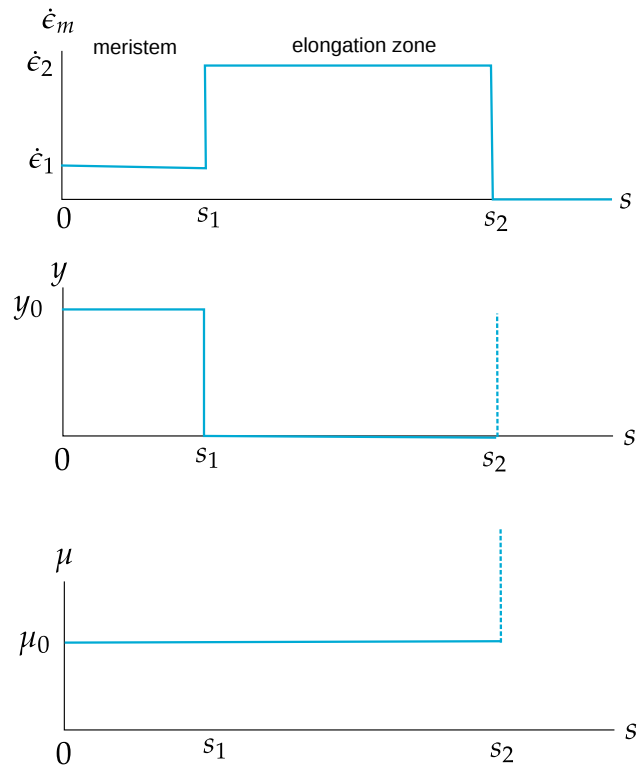


Figure S3: Growth profile ($\dot{\epsilon}_m$), yield stress (y) and viscosity (μ) assumed for straight growing roots in the absence of a hydrotropic stimulus

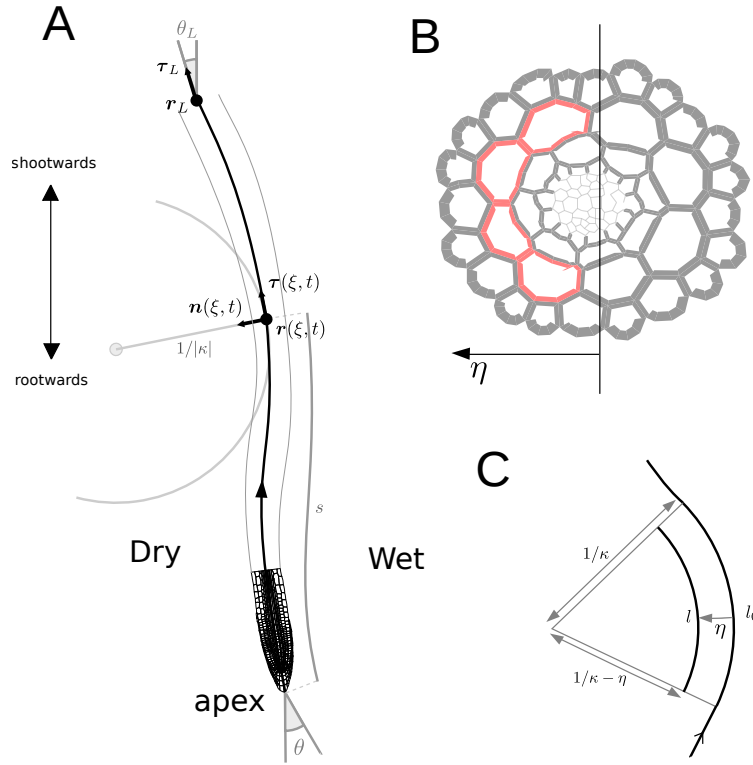


Figure S4: (A) Geometric quantities in midline model. (B) Cross section used for simulation. Line thicknesses correspond to the wall thicknesses used in the bending calculation. Cortical walls on the dry side of the root indicated in pink. (C) Projection of a line of length l , at a distance η from the root midline, onto a length l_0 along the root midline (see equation (28)).

(a)	Cell Wall Type		Thickness (nm)
	Pericycle	R	38
		O	47
	Endodermis	R	45
		I	48
		O	70
	Cortex	R	77
		I	80
		O	105
	Epidermis	R	86
		I	93
		O	198

(b)	s_1	$400\ \mu\text{m}$
	s_2	$1000\ \mu\text{m}$
	δ	$50\ \mu\text{m}$
	$\dot{\epsilon}_1$	$0.1\ \text{hr}^{-1}$
	$\dot{\epsilon}_2$	$0.4\ \text{hr}^{-1}$
	T	$2\ \text{hr}$

(c)	N	500
	L_0	$1200\ \mu\text{m}$
	l_C	$20\ \mu\text{m}$
	Δt	$0.08333\ \text{hr}$

Table S1: (a) Cell wall thicknesses. R, I, O indicates radial, inner and outer cell walls, respectively. Measurements from [3]. (b) Parameter values for growth profile used in model. (c) Parameter values for numerical simulation of bending profile.

Root hydrotropism is controlled via a cortex-specific growth mechanism - Supplementary Note 2

Daniela Dietrich, Lei Pang, Akie Kobayashi,
John A. Fozard, Véronique Boudolf, Rahul Bhosale,
Regina Antoni, Tuan Nguyen, Sotaro Hiratsuka,
Nobuharu Fujii, Yutaka Miyazawa, Tae-Woong Bae,
Darren M. Wells, Markus R. Owen, Leah R. Band,
Rosemary J. Dyson, Oliver E. Jensen, John R. King,
Saoirse R. Tracy, Craig J. Sturrock, Sacha J. Mooney,
Jeremy A. Roberts, Rishikesh P. Bhalerao, José R. Dinneny,
Pedro L. Rodriguez, Akira Nagatani, Yoichiroh Hosokawa,
Tobias I. Baskin, Tony P. Pridmore, Lieven De Veylder,
Hideyuki Takahashi & Malcolm J. Bennett

20th March 2017

1 Overview

The image analysis methods developed to provide the data reported here comprises two processing pipelines:

1. An optic flow method matches local image patches between images to recover apparent motion. This produces a vector field; each pixel location is associated with a vector describing the image motion measured at that point.
2. Segmentation and contour analysis methods are applied independently to each image to identify the root centreline.

Motion vectors lying along the root centreline are then identified and may be analysed to provide growth estimates.

2 Estimating Optical flow

Optical flow algorithms estimate the motion of the viewed object(s) between consecutive image frames, often using differential methods. Various state of the art techniques [2, 17, 8, 12, 3] have been developed to improve this estimation since the pioneering work of Horn and Schunck [5].

Recently, a local descriptor matching component [4] has been incorporated to increase performance. Local image descriptors are extracted and matched from one image to the next. Local descriptors are sparse, scale invariant and extracted from rigid image regions (those which appear to simply translate, without any deformation, across the image plane). Matching is then generally reduced to a nearest-neighbour problem [13]. When traditional optical flow methods are extended in this way, the accuracy of the motion estimation increases significantly. False and ambiguous matches can, however, be reported when the descriptors are extracted from non-rigid regions. Correct matches can also be missed in weakly to moderately textured regions. The images considered here show root structures which are both non-rigid and textured.

To overcome this problem, the DeepFlow method [16] has been utilised here. In DeepFlow, a local descriptor is divided into 4 quadrants and matching is achieved by combining the result of matching quadrants independently. The approach explicitly assumes that each quadrant can move independently to some extent. When applied recursively, this strategy allows for fine, non-rigid matching with explicit pixel-wise correspondences. The pyramid response maps in the DeepFlow method are calculated via the bottom up process for every patch of the reference image to the target image. Local maxima in the response maps correspond to good matches of corresponding local image patches. Detail of its architecture was described in [16].

Figure 1 shows the optical flow result obtained from Frames 176 and 177 of one video sequence of the growing root using our implementation of DeepFlow, adapted from the initial code of the DeepFlow’s authors. Apparent movements outside the root are the result of background noise.

3 Estimating the Root Midline

Given an image, a number of steps are required to estimate the midline of the root: separate the root from its background, remove root hairs and noise, calculate the skeleton and find the longest path through the skeleton.

3.1 Extracting the root

Level set based curve evolution [6] is a powerful method and is applied in many domains, including the analysis of biomedical images. The basic idea of the level set method is to represent a curve being fitted to some data implicitly, as the zero level set of a function defined over a regular grid. This function is then evolved (deformed) according to a specified speed function, inducing a related deformation in the curve. The speed function therefore controls fitting of the curve to the data. It is common for this function to contain terms controlling the relationship between the curve and the data points, and another constraining the overall shape, or smoothness, of the curve. Y. Shi and W.C. Karl in [10] proposed a fast two cycle algorithm for the approximation of level

set based curve evolution, one cycle for the data dependent term and the second cycle for the smoothness regularisation.

One of the strengths of the level set method is that it can be generalised to an arbitrary number of dimensions. Here it is used to grow a region - the background component of a root image - rather than a curve. The user initialises the method by marking a rectangular area of the background. A level set method then extends this region, its speed function preventing the evolving level set from crossing the object boundaries - points at which the local image gradient is high. The effect is that the level set expands to cover the background region, but does not cross over into the root.

Figure 2 shows a sample root segmentation. Some parts of our implementation are adapted from the work of [14], particularly from [1].

3.2 Removing root hairs and noise

Since the intensity of the edge of the root hairs and the main root body are similar, especially when the root is mature, level set evolution will also stop at the boundaries of root hairs, as shown in Figure 2(b) and Figure 2(c). Water bubbles on the background can also be detected. These must be removed, and root hairs reduced, as far as possible.

First, all non-background objects are detected by creating a binary image in which background pixels are labelled 0 and non-background 1, and then extracting connected components. The largest non-background object is considered to be the root, and all other components are discarded (Figure 3(a)). The "rolling ball" algorithm, using a flat disk-shaped structuring element, then erodes the body of the root, removing, or at least reducing, root hairs. The algorithm is described in [15].

Finally, the new boundary of the root should be smoothed. The opening operation [15] is applied to reduce the noise produced by the trimming process and prepare for the next step, skeletonisation.

3.3 Skeletonisation

The skeleton of an object is the set of points that lie within that object at the (locally) maximum distance from the object boundary. The skeleton is useful in general because it provides a simple and compact representation of a shape that preserves many of its topological and size characteristics. It is of particular interest here because the root centreline must coincide with it. Many skeletonisation, or thinning, algorithms exist. The medial axis transformation (MAT) [11] is perhaps the most commonly used.

The approach taken here follows a common, two stage process. First, the MAT is applied to create an initial skeleton. Given a perfectly smooth-boundaried root object, the MAT will produce a single skeleton path that marks the centreline. In practise noise, in the form of small concavities and convexities on the root boundary, will generate spurious skeleton components linking the centreline to the boundary. Removal of these artefacts needs care, as it is easy to

discard the true centreline. Short spurs (whose length is below a user-defined threshold) are first removed, then the longest path through the skeleton is sought.

3.4 Finding the longest path

Given the skeleton in the previous step, the midline of the root is defined as the longest path linking two end nodes. This is identified as follows:

1. Find all the end nodes, these are skeleton pixels which are adjacent to only one other skeleton pixel. Examples of detected end nodes are shown in Figure 5(a).
2. The user provides a starting point near the end of the root. The algorithm automatically finds the nearest end point and set it as the true starting point S .
3. Calculate the distance through the skeleton between the starting point S and the remaining end points using quasi-euclidean distance [7] and retain the longest path. Figure 5(b) shows the midline overlaid on the root image.

In most cases, only two end nodes will exist and the longest path can be calculated quickly. However, depending on the structure and maturity of the root, our methods may not remove all root hairs. There may then be more than one branch in the skeleton, as shown in Figure 6(a). It has three end nodes and one branch node. A branch node is defined as a pixel which has connections with at least three neighbour pixels. As shown in Figure 6(c), the longest path approach finds the correct midline despite this.

Note that, source codes and software for the above methods are available at <https://github.com/tuanthng/RootAnalysis> (in the Release tag).

References

- [1] Fabien Bessy. Open, fast and efficient level set implementation, 2011.
- [2] Michael J. Black and P. Anandan. The robust estimation of multiple motions: Parametric and piecewise-smooth flow fields. *Computer Vision and Image Understanding*, 63(1):75 – 104, 1996.
- [3] Thomas Brox, Andrés Bruhn, Nils Papenberg, and Joachim Weickert. *Computer Vision - ECCV 2004: 8th European Conference on Computer Vision, Prague, Czech Republic, May 11-14, 2004. Proceedings, Part IV*, chapter High Accuracy Optical Flow Estimation Based on a Theory for Warping, pages 25–36. Springer Berlin Heidelberg, Berlin, Heidelberg, 2004.

- [4] Thomas Brox and Jitendra Malik. Large displacement optical flow: Descriptor matching in variational motion estimation. *IEEE Transactions on Pattern Analysis and Machine Intelligence*, 33(3):500–513, 2011.
- [5] Berthold K. P. Horn and Brian G. Schunck. Determining optical flow. *Artificial Intelligence*, 17:185–203, 1981.
- [6] Stanley Osher and James A. Sethian. Fronts propagating with curvature-dependent speed: Algorithms based on hamilton-jacobi formulations. *J. Comput. Phys.*, 79(1):12–49, November 1988.
- [7] David W Paglieroni. Distance transforms: Properties and machine vision applications. *CVGIP: Graphical Models and Image Processing*, 54(1):56 – 74, 1992.
- [8] Nils Papenberg, Andrés Bruhn, Thomas Brox, Stephan Didas, and Joachim Weickert. Highly accurate optic flow computation with theoretically justified warping. *International Journal of Computer Vision*, 67(2):141–158, 2006.
- [9] S. Perreault and P. Hebert. Median filtering in constant time. *IEEE Transactions on Image Processing*, 16(9):2389–2394, Sept 2007.
- [10] Y. Shi and W. C. Karl. A real-time algorithm for the approximation of level-set-based curve evolution. *IEEE Transactions on Image Processing*, 17(5):645–656, May 2008.
- [11] Steven S. Skiena. *The Algorithm Design Manual*. Springer Publishing Company, Incorporated, 2nd edition, 2008.
- [12] Deqing Sun, Stefan Roth, and Michael J. Black. Secrets of optical flow estimation and their principles, 2010.
- [13] Richard Szeliski. *Computer Vision: Algorithms and Applications (Texts in Computer Science)*. Springer, 2011 edition, October 2010.
- [14] L. Şuta, F. Bessy, C. Veja, and M. F. Vaida. Active contours: Application to plant recognition. In *Intelligent Computer Communication and Processing (ICCP), 2012 IEEE International Conference on*, pages 181–187, Aug 2012.
- [15] Rein van den Boomgaard and Richard van Balen. Methods for fast morphological image transforms using bitmapped binary images. *CVGIP: Graphical Models and Image Processing*, 54(3):252 – 258, 1992.
- [16] P. Weinzaepfel, J. Revaud, Z. Harchaoui, and C. Schmid. Deepflow: Large displacement optical flow with deep matching. In *2013 IEEE International Conference on Computer Vision*, pages 1385–1392, Dec 2013.

- [17] Manuel Werlberger, Werner Trobin, Thomas Pock, Andreas Wedel, Daniel Cremers, and Horst Bischof. Anisotropic huber-l1 optical flow. In *Proceedings of the British Machine Vision Conference (BMVC)*, London, UK, September 2009. to appear.



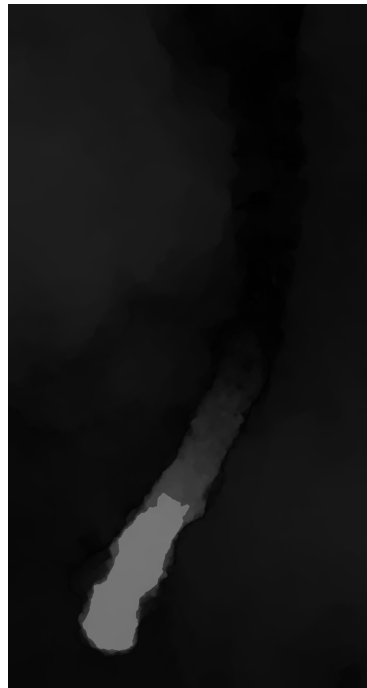
(a) Original Frame 176



(b) Original Frame 177

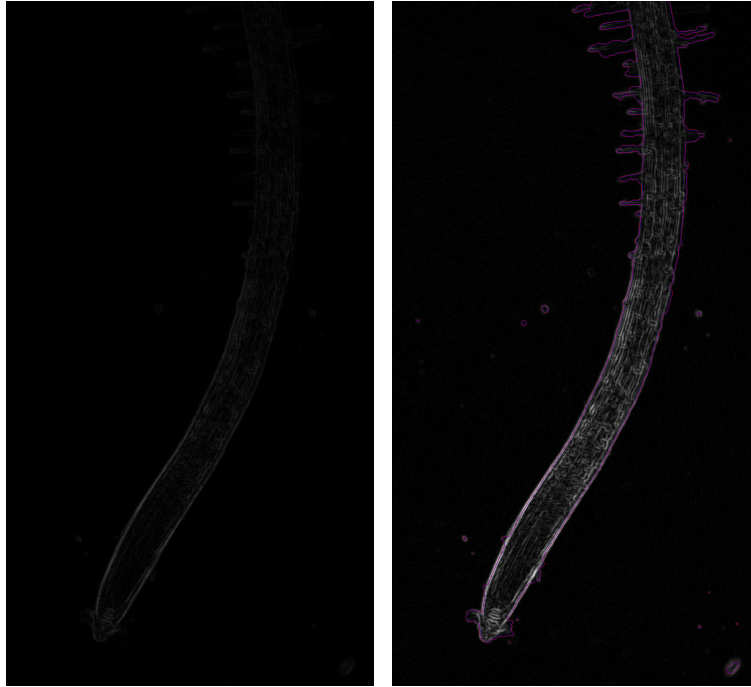


(c) Coloured Optical Flow between Frame 176 and 177 Frames. The brightest region green region has a maximum velocity.



(d) Grayed Optical Flow between Frame 176 and 177 Frames. The brightest region has a maximum velocity.

Figure 1: Examples of the optical flow result between two consecutive frames 176 and 177 of one growing root dataset.

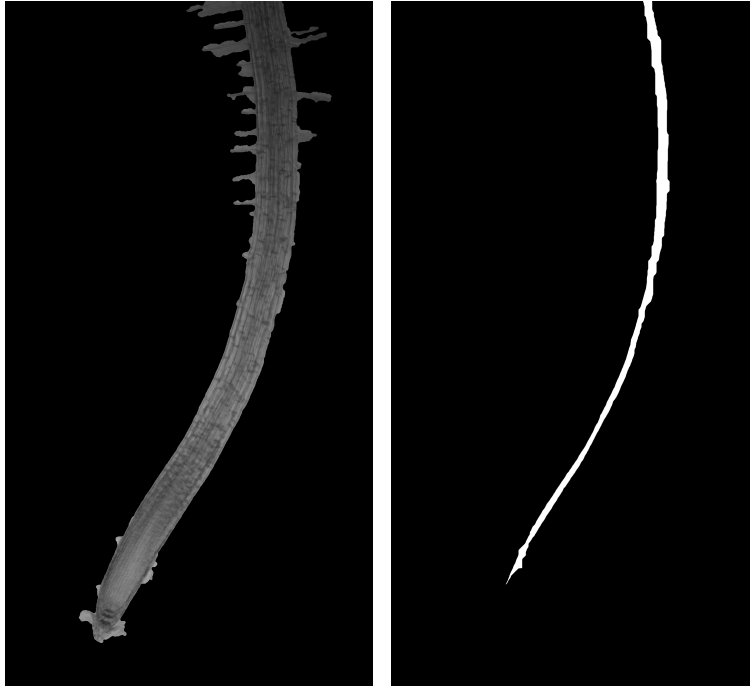


(a) Edge is detected in the Frame 176 and (b) Segmenting the root. The red line is smoothed by the median filter [9] covering the root boundary and noise.



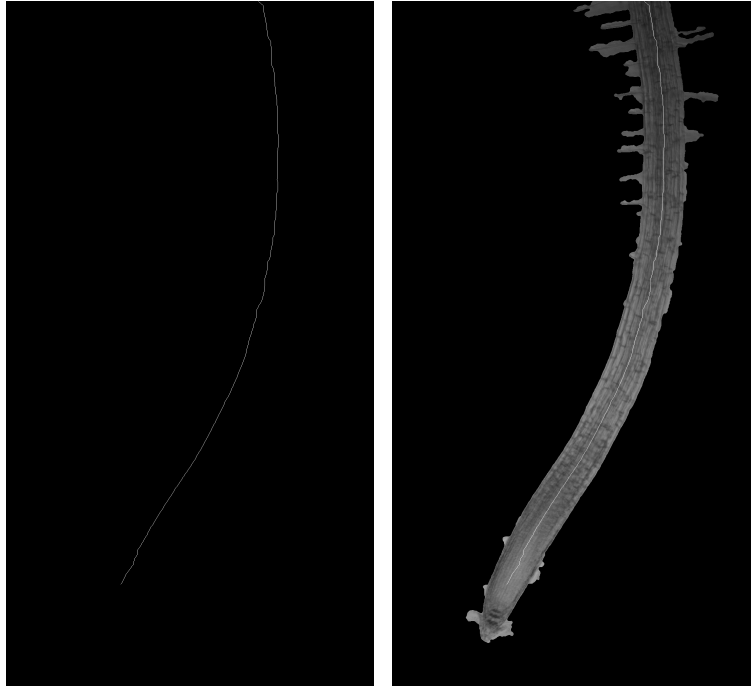
(c) The final root segmented in the Frame 176 after overlaying it on the original frame.

Figure 2: Examples of the root segmented in the Frame 176 of one growing root dataset.



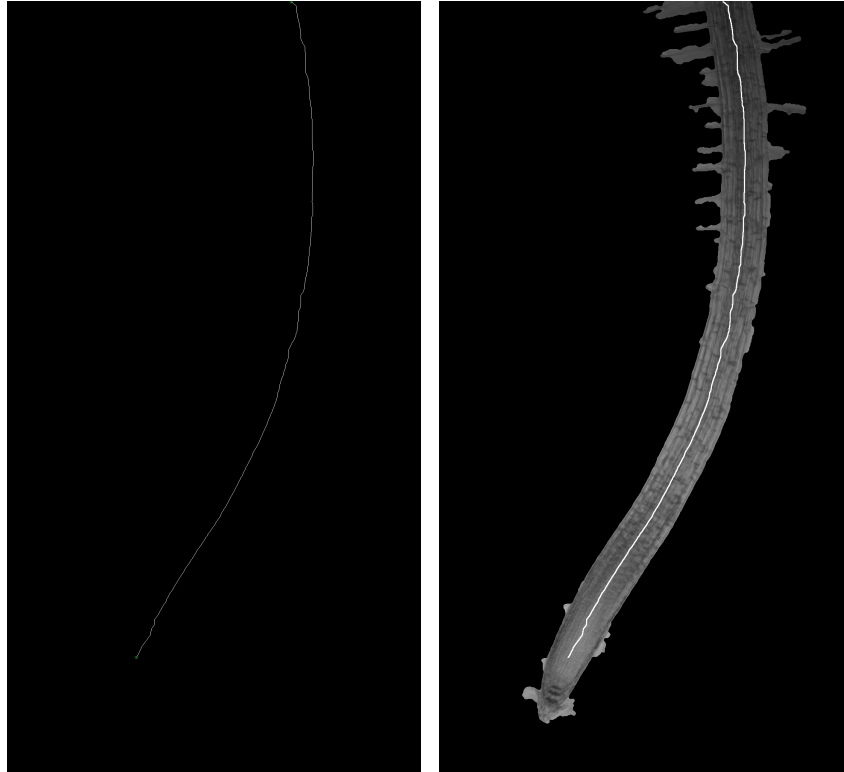
(a) The root in the Frame 176 after re- (b) The remain part of the root after re-
moving all noises from the background. moving root hair.

Figure 3: Examples of the root hairs removed in the Frame 176 of one growing root dataset.



(a) The skeleton of the root of the Frame 176. (b) The skeleton is overlaid on the root image (Figure 3(a)).

Figure 4: Examples of the skeleton detected from the Frame 176 of one growing root dataset.

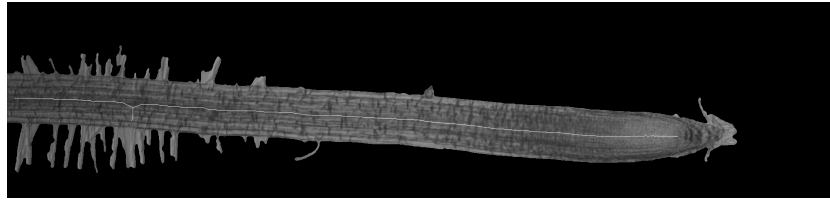


(a) The end nodes highlighted in green dot of the root of the Frame 176. (b) The midline highlighted is overlaid on the root image (Figure 3(a)).

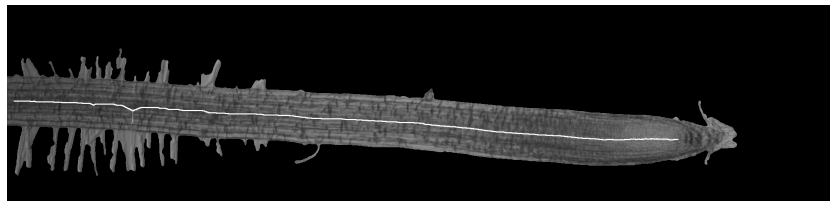
Figure 5: Examples of the midline detected from the skeleton of the Frame 176 of one growing root dataset.



(a) In the Frame 126 of the second dataset, the end nodes are highlighted in green dots and the branch nodes highlighted in red dots.



(b) The skeleton is overlaid on the root image.



(c) The midline highlighted is overlaid on the root image.

Figure 6: Examples of the midline detected from the skeleton of the Frame 126 of the second growing root dataset.