



DOI: 10.1038/srep01122

SUBJECT AREAS:

AUDITORY SYSTEM

IMAGING

NEUROSCIENCE

BIOLOGICAL TECHNIQUES

SCIENTIFIC REPORTS:

1 : 54

DOI: 10.1038/srep00054
(2011)

CORRIGENDUM: When a photograph can be heard: Vision activates the auditory cortex within 110 ms

Alice Mado Proverbio, Guido Edoardo D'Aniello, Roberta Adorni & Alberto Zani

Due to a technical error, the scale for the y-axis was reversed for Figures 1, 2 and 4. The corrected figures, along with their legends, appear below.

Published:

4 August 2011

Updated:

17 January 2013

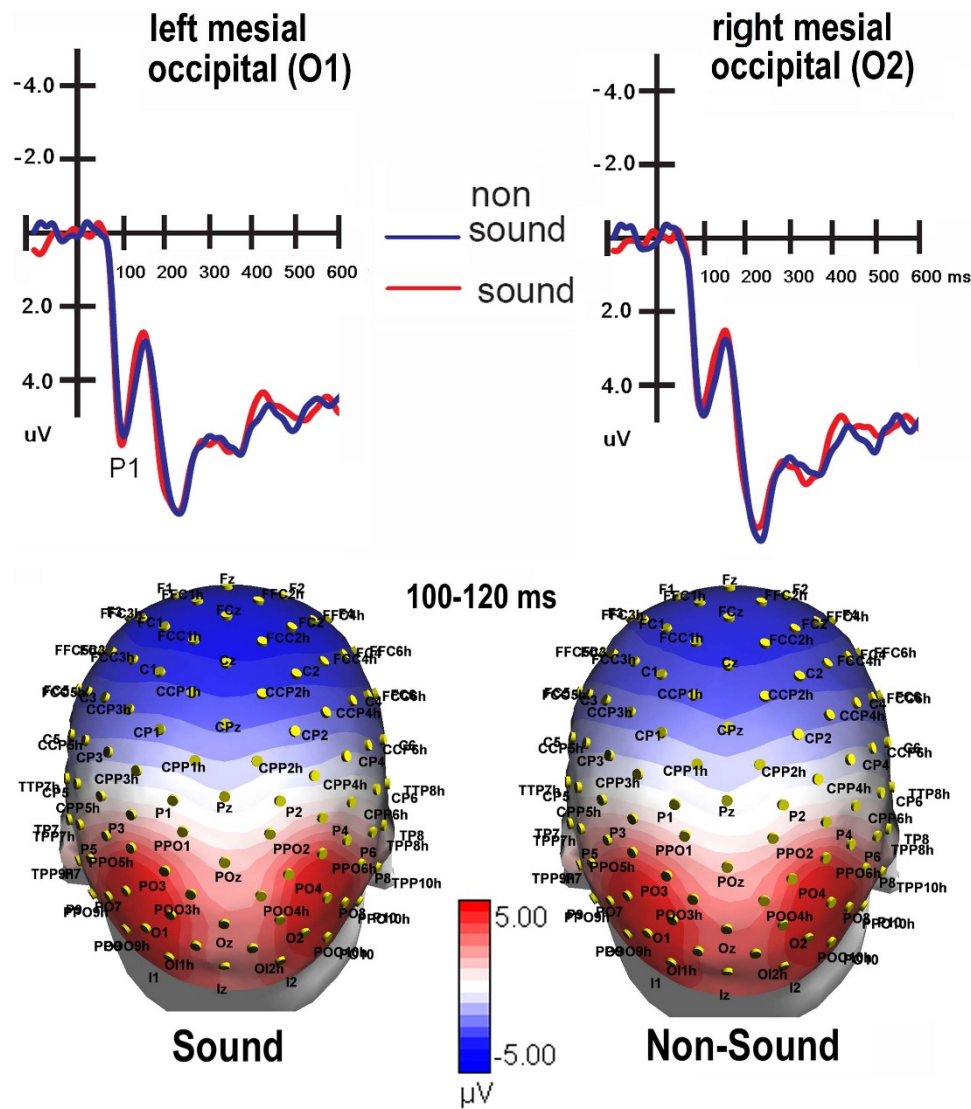


Figure 1 | (Top) Grand-average ERP waveforms recorded at left and right mesial occipital sites in response to sound and non-sound stimuli.

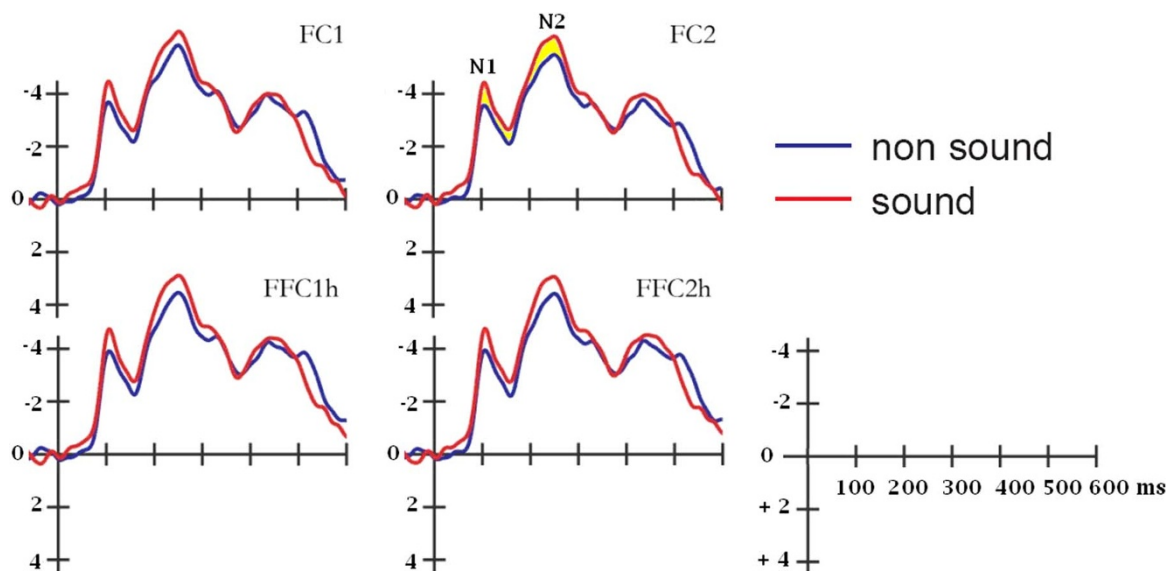


Figure 2 | Grand-average ERP waveforms recorded at left and right fronto-central sites in response to sound and non-sound stimuli.

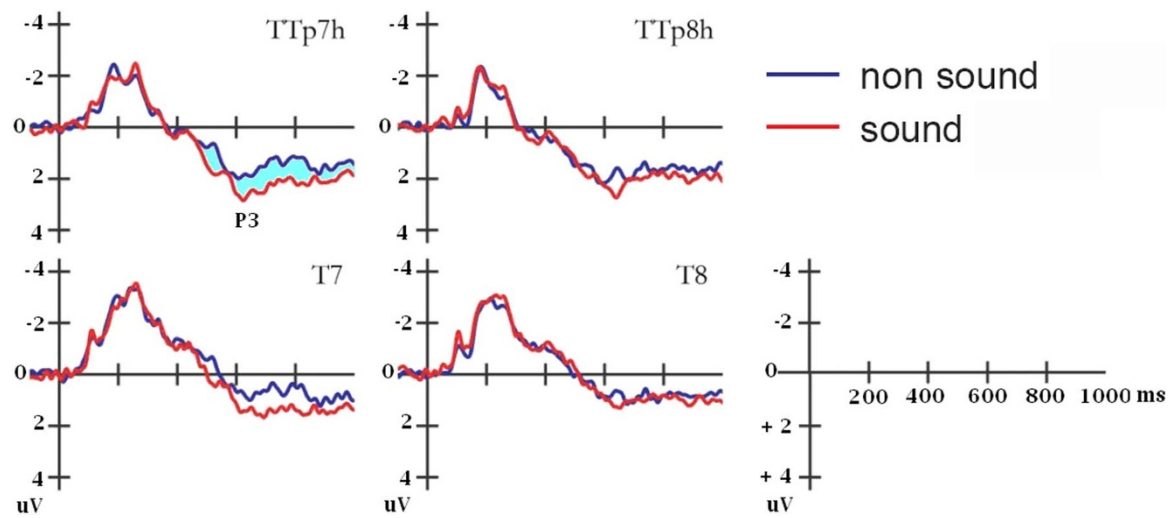


Figure 4 | Grand-average ERP waveforms recorded at left and right temporo-parietal and posterior-temporal sites in response to sound and non-sound stimuli.