

## Elicitor-stimulated induction of defense mechanisms and defense gene activation in grapevine cell suspension cultures

V. REPKA

*Laboratory of Molecular Biology and Virology, Research Institute of Viticulture and Enology, CRIVE, Matúškova 25, SK-833 11 Bratislava, Slovakia*

### Abstract

A cell culture system has been developed to examine a multicomponent defense response induced in grapevine (*Vitis vinifera* L. cv. Limberger) tissues by both biotic and abiotic elicitors. H<sub>2</sub>O<sub>2</sub> from the oxidative burst, cell death, extracellular alkalization, and defense responses such as the accumulation of defense-related proteins and expression of corresponding genes were analyzed in grapevine suspension cultures. Cultured cells responded differentially to a set of 14 elicitors. The most effective group of elicitors was represented by salicylic acid, chitosan, methyl jasmonate, and elicitor released from cell walls of phytopathogen *Botrytis cinerea*. These four representative elicitors highly stimulated accumulation of pathogenesis-related proteins and key enzymes of the phenylpropanoid pathway. Further, fungal elicitor caused rapid transcriptional activation of genes encoding diverse defense-related products. The expression kinetics of four defense-related genes (PR-1, PR-9, PAL, and CHI) were different and strongly dependent on the nature of elicitor used.

*Additional key words:* *Botrytis cinerea*, cell death, expression, immunoblotting, *in vitro* culture, oxidative burst, PR-proteins, run-off transcription, *Vitis vinifera* L.

### Introduction

Plants are not passive hosts to the constant onslaught of microorganisms with which they interact in their environment. Like most other eukaryotic organisms, plants defend themselves against such attacks with a complex array of defense mechanisms. Besides the passive or pre-existing defense reactions involving structural barriers, plants also have induced cellular defenses that prevent further colonization of the tissue once the structural barriers of the host have been breached. These inducible reactions result either from transcriptional activation of defense-related genes encoding, for example, enzymes of the general

phenylpropanoid pathway (Hahlbrock and Scheel 1989, Lamb and Dixon 1994) or from specific enzyme activation initiating cell wall reinforcement (Bradley *et al.* 1992) and the oxidative burst (Sutherland 1991). Moreover, these reactions are frequently accompanied by a highly localized response, hypersensitive cell death, although there is no direct evidence for a causal link (Atkinson 1993, Jakobek and Lindgren 1993).

The key to the cascade of events leading to these active responses is the recognition that trigger the primary response in the initially colonized or infected host cell. Thus, initiation of these events requires

Received 15 September 2000, accepted 27 February 2001.

*Abbreviations:* ASA - acetylsalicylic acid; DMSO - dimethylsulfoxide; EDTA - ethylenediaminetetraacetic acid; PR - pathogenesis-related; PRX - peroxidase; PVP - polyvinylpyrrolidone; ROS - reactive oxygen species; SAR - systemic acquired resistance; SDS - sodium dodecylsulphate; 2,4-D - 2,4-dichloro-phenoxyacetic acid.

*Acknowledgements:* For generously providing me with antisera and clones, I cordially thank Dr. John F. Antoniw (Rothamsted Exp. Stn., Harpenden, UK) for the PR-1 antiserum, Dr. Sege Kauffmann (IBMP-CNRS, Strassbourg, France) for the PR-2 antiserum, Dr. Nicolas Amrhein (ETH Zurich, Switzerland) for the PAL antiserum, Dr. Leon Mur (Free Univ. of Amsterdam, Amsterdam, The Netherlands) for the CHI antiserum, Dr. Joe E. Varner (Washington Univ., St. Louis, MO, USA) for the anti-extensin serum, Dr. Johan Memelink and Dr. Huub J.M. Linthorst (Leiden University, Leiden, The Netherlands) for the PR-1 and PR-2 clones, respectively, and Dr. Imre E. Somssich (MPI, Cologne, Germany) for the PAL and CHI clones. The technical assistance of Mrs. Irma Fischerová is gratefully acknowledged. This work was supported by Grant no. 27 - 19/STP from the Slovak Ministry of Agriculture. Fax: (+421) 754 775436, e-mail: repka@crive.axonpro.sk

perception of either plant-derived (endogenous) or pathogen-derived (exogenous) signals, collectively referred to as elicitors. The elicitors of diverse chemical nature, including sugars, lipids, peptides, and proteins, have been isolated from a variety of phytopathogenic and nonpathogenic microorganisms and have been shown to trigger plant defense responses (Ebel and Cosio 1994, Hahn 1996).

One of the most exciting questions is whether a given elicitor induces the full array of biochemical defense responses, or whether there are groups of responses each of which requires its own elicitor. A highly purified proteinaceous elicitor has been found to induce transcription of at least 18 different genes in parsley (Parker *et al.* 1991), indicating that a single compound can induce a large array of responses. In other instances, a number of different elicitors have been found to elicit essentially the same array of biochemical reactions (Kombrink and Hahlbrock 1986). However, it is also possible that different elicitors induce different parts of the defense response, others may have synergistic effect on the same defense pathway (Preisig and Kuc 1985). Nevertheless, the host signal molecules and the mechanisms underlying both elicitor perception at the plant cell surface and subsequent intracellular transmission of this signal to target sites are still not fully understood. The dissection of such a cascade is difficult in the biological system of an intricate plant-pathogen interaction. Thus, a simplified system in which plant cells would be synchronously challenged with a single molecular inducer (biotic or abiotic elicitor) of defense response, should greatly facilitate the study of these defense mechanisms. To date, plant cell suspension

cultures of parsley (Lozoya *et al.* 1991), tomato (Grosskopf *et al.* 1991), soybean, alfalfa, and tobacco (Guo *et al.* 1997, Dorey *et al.* 1999) have frequently been exploited to investigate the mechanisms underlying manifestation of plant defense responses.

Limited information is currently available regarding the physiology, biochemistry, and molecular biology of inducible defense mechanisms in grapevines. To date, the most effort has been focused on the induction of a number of PR proteins, including chitinases and  $\beta$ -1,3-glucanases, in grapevine leaves, following application of SA or infection by *Botrytis cinerea* (Renault *et al.* 1996). Busam *et al.* (1997) reported differential expression of two chitinase genes in grapevine responding to SAR activators and fungal challenge with *Plasmopara viticola*. More recently, Giannakis *et al.* (1998) reported a correlation between the combined activities of chitinase and  $\beta$ -1,3-glucanase of a range of grapevine cultivars and their observed field resistance to powdery mildew. Jacobs *et al.* (1999) induced and cloned of different PR cDNAs in grapevine infected with powdery mildew and treated with an ethylene releasing compound, ethephon.

In this study, we assessed the response of suspension-cultured grapevine cells to treatment with a wide scale of biotic and abiotic elicitors. Since recently we have shown that grapevine cell suspension is also highly responsive to an elicitation and accumulate the prominent PR-1-like protein (Repka *et al.* 2000), I further used this experimental system as a tool to study the molecular events linking initial perception of a pathogen and expression of plant defense response.

## Materials and methods

**Plants:** Grapevine (*Vitis vinifera* L. cv. Limberger) was obtained from field-grown vines at CRIVE campus and was grown *in vitro* on modified Murashige-Skoog medium (MS/D, pH 5.8) as described previously (Repka *et al.* 2000). The grapevine cell culture (line D1) was initiated from callus and grown on MS/D medium supplemented with 3 % sucrose (m/v), 1 mg dm<sup>-3</sup> NAA and 0.2 mg dm<sup>-3</sup> BAP. A suspension cell culture was established from these calluses by transferring small aliquots of well-grown callus tissue to 120 cm<sup>3</sup> of fresh MS/D medium in 250 cm<sup>3</sup> Erlenmeyer flasks and subsequent agitation at 110 rpm at 27 ± 1 °C.

**Preparation of elicitors:** The fungal cell wall elicitor was prepared from grey mold (*Botrytis cinerea* PERS. *et* FRIES, a grapevine isolate) according to Malolepsza and Urbanek (1994). The elicitor was used at a final concentration of 2.4 µg of glucose equivalents (2.2 µg of protein) per cm<sup>3</sup> cell suspension culture.

Crab-shell chitosan (*Sigma*, Deisenhofen, Germany) was ground to a fine powder and purified following the procedure of El Ghaouth *et al.* (1991). Chitin, CF-Cellulose, *Sephadex G-25*, and yeast cell walls (YBS) were autoclaved for 20 min at 121 °C, then diluted with the sterile MS/D medium. Tunikamycin (*Sigma*, Deisenhofen, Germany) and AgNO<sub>3</sub> (*Merck AG*, Bratislava, Slovakia) were directly solubilized in MS/D medium and sterilized using *Millex-GP* disposable filter unit (0.22 µm, *Millipore*, Bedford, USA). Methyl paraben, propyl paraben (*Serva*, Heidelberg, Germany), salicylic acid and acetylsalicylic acid (*Duchefa*, Haarlem, The Netherlands) were prepared in DMSO (0.5 % final concentration) and titrated to pH 5.7. 2,4-D (*Sigma*, Deisenhofen, Germany) and methyl jasmonate (MeJA, *Duchefa*, Haarlem, The Netherlands) were prepared from a stock solution in ethanol (0.1 % final concentration). Both 0.1 % ethanol and 0.5 % DMSO alone were used as control.

**Cell suspension treatment with elicitors:** Four days after subculture cells logarithmic phase of growth were used and treatment with the elicitors was performed in the original flasks in the light to avoid any stress associated with the transfer. 6 d after the treatments, the cells and the spent medium were harvested separately for protein extraction. Alternatively, after the elicitation protocol was completed suspension-cultured cells were harvested and immediately submerged in RNeasy (Ambion, Austin, USA) reagent either for subsequent RNA extraction or for archival storage at -20 °C.

**Analysis of cell death:** Dead cells were quantified according to Turner and Novacky (1974). Briefly, cell cultures were incubated 15 min with 1 % Evans blue (Sigma, Deisenhofen, Germany) and then washed extensively to remove excess and unbound dye. Dye that had bound to dead cells was solubilized in 50 % methanol with 1 % SDS for 30 min at 50 °C and then quantified by monitoring  $A_{600}$  using UV/VIS-1601 spectrophotometer (Shimadzu, Tokyo, Japan). Data are means of three separate measurements.

**Assay of the oxidative burst:** Hydrogen peroxide production was quantified in terms of the chemiluminescence due to the ferricyanide-catalyzed oxidation of luminol (Sigma, Deisenhofen, Germany), as described by Yano *et al.* (1998). The chemiluminescence, recorded with a luminometer (model FB12, Berthold, Pforzheim, Germany) was integrated for the 30-s period immediately after the start of the reaction. Destruction of exogenous and/or endogenous  $H_2O_2$  in cell suspension cultures was assayed by a starch/ $I_2$  procedure (Olson and Varner 1993).

**Protein extraction and analysis:** Frozen suspension cells were added to a mortar containing prechilled Trisepac extraction buffer (50 mM Tris-HCl, pH 8.0, 500 mM sucrose, 1 mM EDTA, 0.2 % insoluble PVP, 6 mM ascorbic acid and 0.1 % cysteine) and sterile coarse sand *ca.* 200 mg. Homogenization was for 1 min with a ratio of 2.5 cm<sup>3</sup> of buffer: 1 g fresh mass leaf tissue or cells. The grindate was filtered through a layer of Miracloth (Calbiochem, Zug, Switzerland), and the filtrate was centrifuged at 20 000 g for 20 min at 4 °C. Supernatants were centrifugally concentrated using Centriprep-3 concentrators (Amicon, Witten, Germany), passed through Sephadex G-25 PD-10 minicolumns (Pharmacia, Uppsala, Sweden) and stored at -20 °C. Protein concentrations were determined by the method of Bradford (1976). The supernatant containing soluble proteins was used for measurement of PRX activity according to Repka and Slov  kov   (1994).

**Western slot blotting:** For quantitative and rapid screening of the accumulation of the defense-related gene

products, the Slot Immuno Binding Assay coupled with enhanced chemiluminescence detection - SIBA/ECL (Repka *et al.* 1996) was employed. Individual samples equivalent to 5 µg of total proteins were slotted onto nitrocellulose membrane (PROTRAN BA-85, 0.45 µm, Schleicher and Schuell, Dassel, Germany) using the slot blot apparatus (model PR 648, Hoefer Scientific, San Francisco, USA). After loading the samples, the membrane was blocked for 1 h at room temperature in 5 % Blotto (non-fat dried milk) in TEN buffer (50 mM Tris-HCl, pH 7.4, 5 mM EDTA, 150 mM NaCl, 0.05 % Tween-20) and a panel of various antisera was used to probe the blots. Antisera used for immunodetection the presence of defense-related proteins have been raised against tobacco PR-1a (Antoniw and Pierpoint 1978), tobacco PR-2a (Kauffmann *et al.* 1987), cucumber PR-8 (Repka 1997), cucumber PR-9 (Repka and Slov  kov   1994), parsley PAL (Appert *et al.* 1994), petunia CHI (Van Tunen and Mol 1987), and carrot extensin (Cassab and Varner 1987). The membranes were washed four times in TEN buffer for 10 min each. Horse radish peroxidase-conjugated swine anti-rabbit IgG (SwaR, Sevac, Prague, Czech Republic) was diluted 1:50 000 for the secondary antibody reaction. Antigen-antibody complexes were visualized using SuperSignal West Dura (Pierce, Rockford, USA) and images were recorded on Hyperfilm-ECL (Amersham, Buckinghamshire, UK).

**Total RNA extraction and slot blot hybridization analysis:** For RNA extraction, approx. 0.5 g of cells stored in RNeasy were directly homogenized by using an RNeasy isolation reagent as directed by the manufacturer (Ambion, Austin, USA). Absorbance at 260 and 280 nm was used to determine purity and concentration of RNA. To confirm that RNA had not been degraded and that equivalent samples were loaded in each slot, the GenoGold total nucleic acid staining reagent (Vector Labs, Burlingame, USA) was used following to manufacturer instructions. For RNA slot blot analysis, aliquots containing 5 µg RNA were denatured in 2.5 M formaldehyde, 6 × SSPE (6 × SSPE = 900 mM NaCl, 60 mM NaH<sub>2</sub>PO<sub>4</sub>, 6 mM EDTA, pH 7.7) at 60 °C for 1 h in a total volume of 0.050 cm<sup>3</sup>. Samples were immediately applied to a prewetted (water then 6 × SSPE) Nytran N-13 membrane (Schleicher and Schuell, Dassel, Germany) using a slot blot apparatus PR 648 (Hoefer Scientific, San Francisco, USA). Prehybridization (17 h at 42 °C) was conducted in nuclease-free BLOTTO-MF solution (120 mM Tris-HCl, pH 7.4, 8 mM EDTA, 600 mM NaCl, 1 % non-fat dried milk powder, 50 % deionized formamide, 1 % SDS) according to Monstein *et al.* (1992). A synthetic oligonucleotide (20-mer, MWG Biotech, Ebersberg, Germany) modified at the 5' end with biotin was used as the PR-9 (prx)-RNA complementary probe designed from the nucleotide sequence of the coding strand for the

peptide HFHDCFV (5'-CATTTCACGATTGTTTCGT-3', Henriissat *et al.* 1990). Gene specific probes were used for PR-1 (pCNT3, Memelink *et al.* 1990), CHS (pLF15, Somssich *et al.* 1989), and PAL (PcPAL-4, Somssich *et al.* 1989). Probes were gel purified and psoralen-biotin-labelled using *BrightStar* nonisotopic labeling kit (Ambion, Austin, USA). Hybridization of the probes ( $100 \text{ ng cm}^{-3}$ ) to the membrane was carried out in *BLOTTO-MF* solution at  $46^\circ\text{C}$  for 24 h. Posthybridization stringency washes consisted of three 15-min washes in  $6 \times \text{SSPE}$ , 0.1 % SDS at  $25^\circ\text{C}$ , one 15-min was in  $6 \times \text{SSPE}$ , 0.1 % SDS at  $46^\circ\text{C}$ , and one 15 min-wash in  $6 \times \text{SSPE}$  at  $46^\circ\text{C}$ . Membranes hybridized with biotinylated probes were incubated at  $25^\circ\text{C}$  for 1 h in 5 % *BLOTTO-TEN* buffer (Repka and Slov  kov   1994). Membranes were then incubated in a solution of horse radish peroxidase-conjugated avidin D ( $2.5 \text{ } \mu\text{g cm}^{-3}$ , Vector Labs, Burlingame, USA) in TBS buffer (100 mM Tris-HCl, pH 7.5, 100 mM NaCl, 2 mM  $\text{MgCl}_2$ , 0.05 % Tween - 20) for 1 h. Finally, the membranes were washed three 10-min washes of TBS buffer. The signal was visualized using enhanced chemiluminescence as described for immunoblots. The levels of transcript accumulation were directly determined on films by area integration using a MD 300A Computing densitometer (Molecular Dynamics, Sunnyvale, USA).

**Preparation of intact nuclei:** Transcriptionally active nuclei were isolated from control and elicited grapevine cells following the protocol of Zhang *et al.* (1995). The intactness of isolated nuclei was estimated with DAPI staining.  $0.002 \text{ cm}^3$  of  $20 \text{ } \mu\text{g cm}^{-3}$  DAPI in  $1 \times \text{HB}$  buffer (100 mM Tris-HCl, pH 9.4, 800 mM KCl, 100 mM EDTA, 10 mM spermine, 10 mM spermidine, 500 mM sucrose) were mixed with  $0.198 \text{ cm}^3$  of grapevine nuclei prepared as above in a  $0.5 \text{ cm}^3$  microcentrifuge tube in the dark. After the mixture was incubated on ice for 1 - 2 min, about  $0.01 \text{ cm}^3$  of the stained nuclei suspension were dropped on a glass slide, gently covered with a glass cover slip, and observed under an Olympus IX-50

(Olympus, Hamburg, Germany) epifluorescence microscope equipped with phase contrast objective lenses. Isolated nuclei were suspended in 50 mM Tris-HCl (pH 8.0), 5 mM  $\text{MgCl}_2$ , 10 mM  $\beta$ -mercaptoethanol, 25 % glycerol and stored at  $-20^\circ\text{C}$  for up to 2 weeks without decrease in transcription activity.

**Nuclear run-off experiments:** Nuclei isolated from cells at various times after elicitation were allowed to complete transcripts *in vitro*. The standard "cold" *in vitro* mixture contained  $1.8 \times 10^7$  nuclei, 30 mM  $(\text{NH}_4)_2\text{SO}_4$ , 2 mM  $\text{MnCl}_2$ , 0.5 mM each of ATP, GTP, CTP, and biotin-16-UTP (40 % modified nucleotide and 60 % unmodified nucleotide) in a final volume  $0.5 \text{ cm}^3$ . Samples were incubated for 45 min at  $30^\circ\text{C}$  with occasional gentle stirring. After incubation nuclei were sedimented and total RNA was isolated with RNAwiz reagent (Ambion, Houston, USA). Alternatively, since the post-synthesis chemical labeling yield to the greatest sensitivity in hybridization we used Psoralen-Biotin nonisotopic labeling kit (Ambion, Houston, USA) to label *in vitro* transcripts. DNA fragments containing coding region of the PR-1, PR-2, PR-9, PAL, CHS or actin (BPR188, R&D Systems, Inc., Minneapolis, USA) gene were isolated, denatured and transferred to nitrocellulose membranes (BA85,  $0.45 \text{ } \mu\text{m}$ , Schleicher and Schuell, Dassel, Germany) using the PR648 slot-blot apparatus (Hoefel, San Francisco, USA). Membranes were then prehybridized for 12 h under similar condition as for Northern blots. After prehybridization, membranes were dissected and pieces containing one row of slots each of the DNA fragments were hybridized with the appropriately labeled total RNA. Hybridization was carried out in a small glass tubes using  $0.85 \text{ cm}^3$  of the hybridization mixture supplemented with probe RNA and 10 % dextrane sulphate for 48 h at  $42^\circ\text{C}$ . Hybridizations were performed in an HB-2D hybridizer (Techne, Cambridge, UK). Post-hybridization stringency washes, signal development and processing were performed essentially as described above for Northern blots.

## Results

**Plant cell responses to treatment with various biotic and abiotic elicitors:** The addition of elicitors increased, albeit to a different extent, cell death compared with control cells (Fig. 1A). Based on the effectiveness of either elicitors they may be separated into three groups: low effective (*m*-paraben, *p*-paraben and  $\text{AgNO}_3$ ), moderately effective (ASA, YBS, Sephadex G-25, tunikamycin and 2,4-D), and highly effective (SA, CF-cellulose, chitosan, chitin, MeJA and elicitor released from *Botrytis cinerea*). From the latter group the most potent and almost identically effective were plant volatile MeJA and *B. cinerea* elicitor (Bc-e).

To check if induction of cell death is causally linked to the oxidative burst,  $\text{H}_2\text{O}_2$  from the cell suspension cultures treated with the same set of elicitors was measured. Eight of 14 elicitors stimulated production of  $\text{H}_2\text{O}_2$ , while no  $\text{H}_2\text{O}_2$  accumulation was observed for all the rest. A limited amounts of  $\text{H}_2\text{O}_2$  were present in both  $\text{C}_6$  and DMSO controls (Fig. 1B). Surprisingly, treatment of cells with  $5 \text{ } \mu\text{M}$  MeJA, one of the most potent elicitors, did not cause  $\text{H}_2\text{O}_2$  production as observed for its most potent counterpart Bc-e.

Besides one exception (chitosan) the capacity of elicitors to change the extracellular pH was very low

(Fig. 1C). In turn, a slight acidification instead alkalization was determined for SA, AgNO<sub>3</sub>, YBS, MeJA, 2,4-D, and Bc-e, even when the elicitor solutions were titrated to a pH 5.7 at the onset of the treatment.

The change in the content of total soluble PRX was estimated as the fourth parameter of elicitation protocol.

The highest PRX activity was observed in cells treated with *B. cinerea* elicitor (Fig. 1D). Unexpectedly, the accumulation of total soluble PRX for all the rest of elicitors was highly decreased and there was close parallel with control cell 6 d after the onset of treatment.

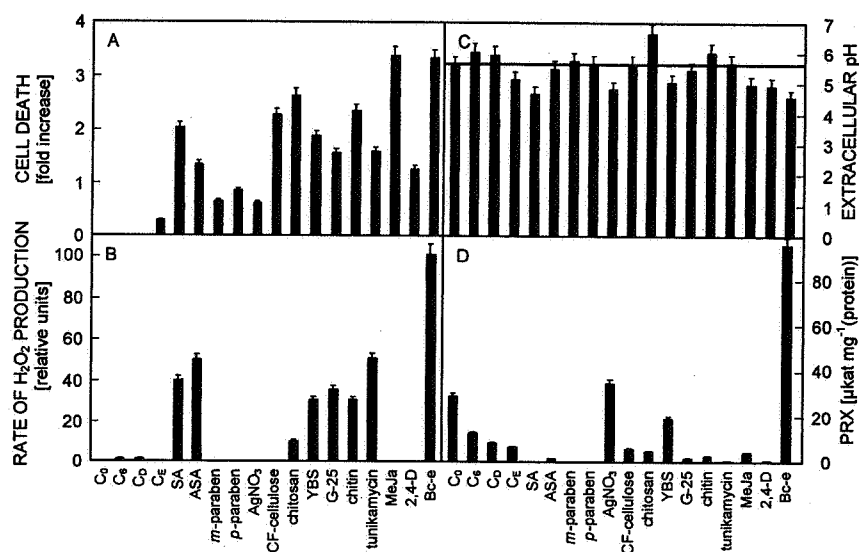


Fig. 1. Comparison of the effects of exogenously applied biotic and abiotic elicitors on cell death (A), H<sub>2</sub>O<sub>2</sub> production (B), extracellular pH (C), and change in PRX activity (D) in suspension-cultured grapevine cells. Cell death was assayed by Evans blue staining compared with unelicited cells. Horizontal line in figure C denotes the starting pH value of the culture medium at onset of treatment. Values represent the means  $\pm$  SE of three independent experiment/extractions analyzed under identical conditions. C<sub>0</sub> - control cells at time zero, C<sub>6</sub> - control cells 6 d after the onset of treatment, C<sub>D</sub> - DMSO control, C<sub>E</sub> - ethanol control; SA (500  $\mu$ M), ASA (300  $\mu$ M), m-paraben (100  $\mu$ M), p-paraben (100  $\mu$ M), AgNO<sub>3</sub> (500  $\mu$ M), CF-cellulose (10 mg cm<sup>-3</sup>), chitosan (75  $\mu$ g cm<sup>-3</sup>), YBS (10 mg cm<sup>-3</sup>), Sephadex G-25 (8 mg cm<sup>-3</sup>), chitin (8 mg cm<sup>-3</sup>), tunikamycin (10  $\mu$ g cm<sup>-3</sup>), MeJA (5  $\mu$ M), 2,4-D (25  $\mu$ M), Bc-e (2.4  $\mu$ g cm<sup>-3</sup>).

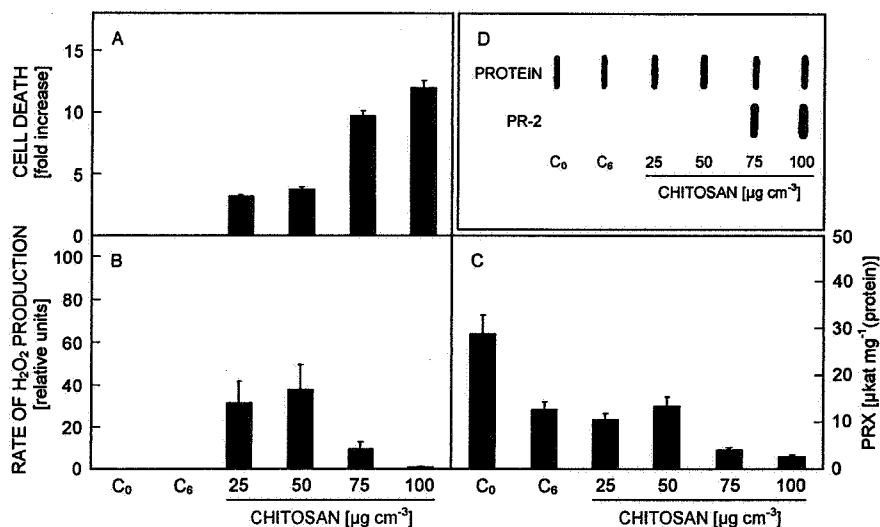


Fig. 2. Dose response for chitosan induction of cell death (A), production of H<sub>2</sub>O<sub>2</sub> from oxidative burst (B), change in PRX activity (C), and accumulation of PR-2 protein (D) in suspension-cultured grapevine cells. Values represent the means  $\pm$  SE of three independent experiment/extractions analyzed under identical conditions. C<sub>0</sub> - control cells at time zero, C<sub>6</sub> - control cells 6 d after the onset of treatment.

**Dose response for effects of representative elicitors on grapevine suspension cells:** Three representative elicitors were selected for further work on the basis of criteria of effectiveness: chitosan, SA, and MeJA. Addition of chitosan in the range of concentration 25 - 100  $\mu\text{g cm}^{-3}$  induced cell death by a concentration dependent manner (Fig. 2A). Two lowest concentration of chitosan highly stimulated production of  $\text{H}_2\text{O}_2$ , while the

highest concentration of chitosan had an opposite effect (Fig. 2B). Similar data were obtained when the total soluble PRX activity was measured (Fig. 2C). Chitosan at concentration 75 and 100  $\mu\text{g cm}^{-3}$  caused a marked accumulation of a marker protein (PR-2) whose expression level is highly correlated with the occurrence of an HR in grapevine, and the relative signal intensity shown to be concentration dependent (Fig. 2D).

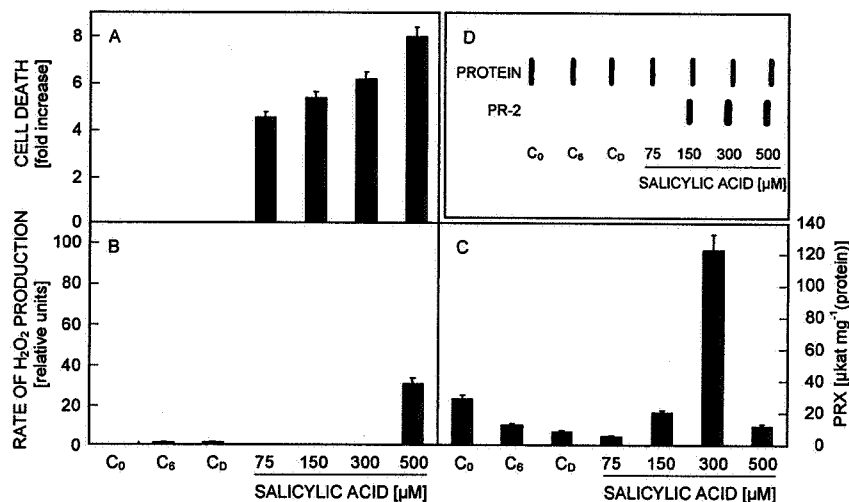


Fig. 3. Dose response for salicylic acid induction of cell death (A), production of  $\text{H}_2\text{O}_2$  from oxidative burst (B), change in PRX activity (C), and accumulation of PR-2 protein (D) in suspension-cultured grapevine cells. Values represent the means  $\pm$  SE of three independent experiment/extractions analyzed under identical conditions.  $C_0$  - control cells at time zero,  $C_6$  - control cells 6 d after the onset of treatment,  $C_D$  - DMSO control.

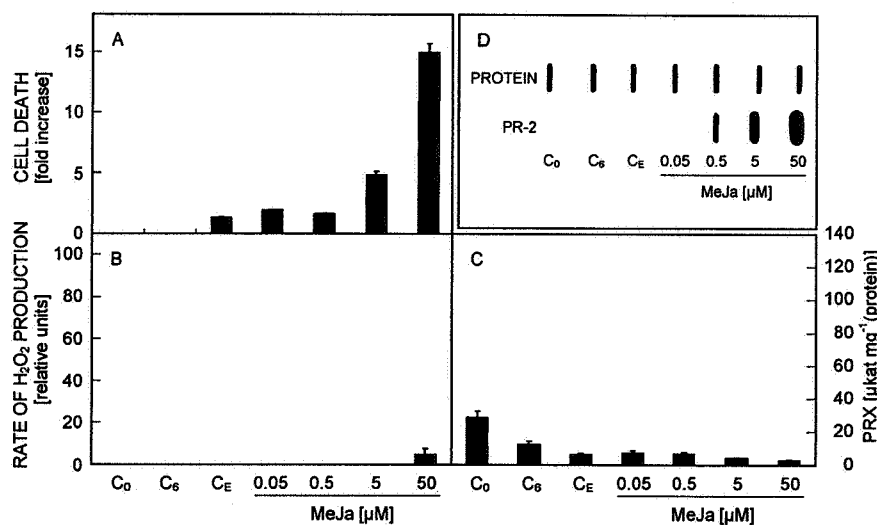


Fig. 4. Dose response for methyl jasmonate induction of cell death (A), production of  $\text{H}_2\text{O}_2$  from oxidative burst (B), change in PRX activity (C), and accumulation of PR-2 protein (D) in suspension-cultured grapevine cells. Values represent the means  $\pm$  SE of three independent experiment/extractions analyzed under identical conditions.  $C_0$  - control cells at time zero,  $C_6$  - control cells 6 d after the onset of treatment,  $C_E$  - ethanol control.

Salicylic acid was applied to cell suspension cultures at a range of concentration 75 - 500  $\mu\text{M}$ . Induction of cell death by SA also strongly depended on concentration used (Fig. 3A), but unlike to chitosan, 500  $\mu\text{M}$  SA was the only concentration able to induce the  $\text{H}_2\text{O}_2$  burst

(Fig. 3B). Stimulation of PRX activity by SA treatment was much less pronounced at concentration 75, 150 or 500  $\mu\text{M}$  when compared to 300  $\mu\text{M}$ . At this concentration the PRX activity reached about twelve-fold higher rate than in the control cells taken 6 d after the onset of

treatment (Fig. 3C). SA up to 300  $\mu$ M induced accumulation of PR-2 protein by a concentration dependent manner, while the relative signal intensity at concentration 500  $\mu$ M slightly decreased (Fig. 3D).

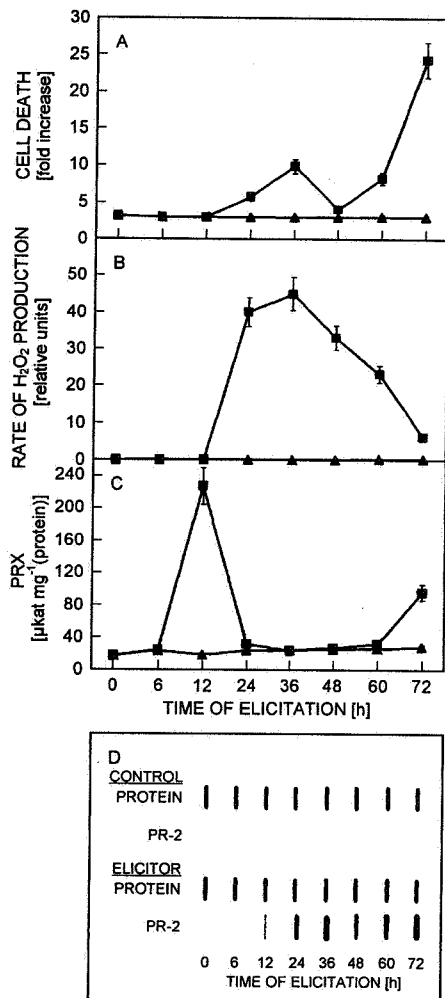


Fig. 5. Time courses of *Botrytis cinerea* elicitor-stimulated events in suspension-cultured grapevine cells. (A) induction of cell death, (B) production of H<sub>2</sub>O<sub>2</sub> from the oxidative burst, (C) change in PRX activity, (D) accumulation of PR-2 protein. Values represent the means  $\pm$  SE of three independent experiment/extractions analyzed under identical conditions. Untreated control (closed triangles), *Botrytis cinerea* elicitor (closed squares).

Methyl jasmonate (MeJA), a plant volatile molecule, markedly stimulated cell death only in two highest concentrations applied to cells (Fig. 4A). The highest cell death correlated with an increase in H<sub>2</sub>O<sub>2</sub> amount (Fig. 4B). The rate of total PRX activity was inversely proportional to concentration of the MeJA used (Fig. 4C), but in turn, an accumulation of marker PR-2 protein showed just an opposite trend (Fig. 4D).

**Kinetics of response of grapevine cells elicited with *Botrytis cinerea* elicitor:** Treatment of grapevine cell suspension cultures with an elicitor released from mycelial cell walls of *B. cinerea* caused a biphasic cell death response. First, cell death peaked 36 h post-treatment, and then decreased to a constant level. A second peak, 2.5-fold higher than the first one, was detected 72 h after the treatment (Fig. 5A). The kinetics for H<sub>2</sub>O<sub>2</sub> production was massive and there was a strong coincidence with the kinetics of the first phase of cell death (Fig. 5B). Production of H<sub>2</sub>O<sub>2</sub> also peaked 36 h after the treatment, but unlike to the cell death the oxidative burst gradually decreased and reached nearly constant level 72 h post-treatment. Bc-e induced a rapid and transient increase in PRX activity, with the maximum induction occurring 12 h after the treatment (Fig. 5C). After a lag, PRX activity increased again between 60 and 72 h post-treatment period. As a complementary test, we examined the kinetics of expression of a marker protein (PR-2). While no PR-2 protein was accumulated in control cells, elicitor treatment stimulated its expression and accumulation with the kinetics similar to cell death (Fig. 5D). The most intense signals were observed in the same intervals as that in which cell death peaked out.

**Accumulation of defense-related proteins in elicited grapevine cell suspension cultures:** Six d after the treatment of cells with four representative elicitors PR-proteins were analyzed by SIBA-ECL analysis. Seven different sera used have been shown previously to be specific to a given family of PR-proteins. Fig. 6 shows a

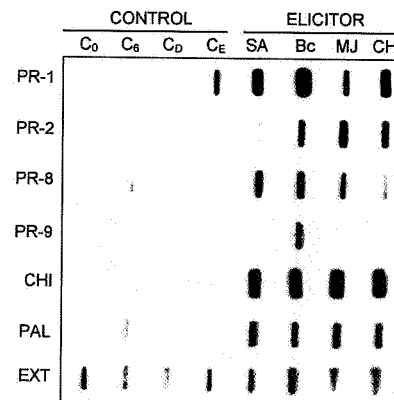


Fig. 6. Elicitor-induced accumulation of defense-related gene products in the cultivation medium. Grapevine cells were treated for 6 d with the elicitors indicated (300  $\mu$ M SA, 2.4  $\mu$ g cm<sup>-3</sup> elicitor from *B. cinerea*, 50  $\mu$ M methyl jasmonate, or 100  $\mu$ g cm<sup>-3</sup> chitosan) or with water. Slot blots (5  $\mu$ g of total protein per slot) were probed with seven different antisera and immunospecific signal was developed using chemiluminescence. SA - salicylic acid, Bc - elicitor released from *B. cinerea* mycelium, MJ - methyl jasmonate, CH - chitosan, CHI - chalcone isomerase, PAL - phenylalanine ammonia lyase, EXT - extensin.

different patterns of PR-protein accumulation in respect to the type of elicitor used. PR-1, PR-2, PR-8, as well as the CHI and PAL proteins accumulated in relatively high amounts upon treatment with either elicitors. PR-9 was shown to be accumulated in grapevine cells only after treatment with Bc-e. On the other hand, in control cells, that were non-treated and cells treated with sterile distilled water, PR-proteins were hardly detectable, except some members of the PR-8 and PAL, although in minute amounts. Constitutively expressed extensin served as a loading marker, although a slight stimulation of it was caused by Bc-e.

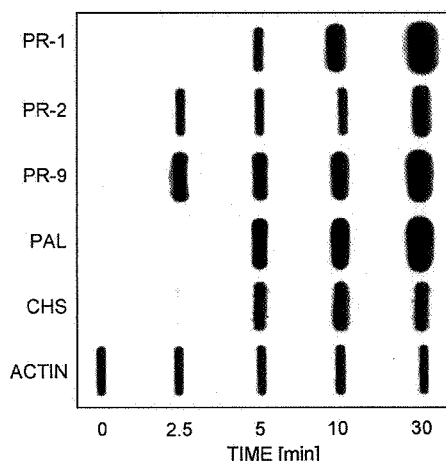


Fig. 7. Transcriptional activation of defense-related genes in response to elicitation with elicitor released from *B. cinerea* mycelium. Run-off transcription was performed from nuclei isolated from grapevine cell suspension cultures elicited for the times indicated. Slot blot hybridization was performed with immobilized cDNA specific for genes indicated.

**The induction of defense genes in elicitor-treated grapevine cells:** The effect of Bc-e treatment on the transcription of genes encoding some PR-proteins and key enzymes of the phenylpropanoid pathway, in comparison to the constitutively expressed actin gene, were determined by run-off transcription with isolated nuclei (Fig. 7). Accumulation of transcripts encoding the lytic enzyme  $\beta$ -1,3-glucanase (PR-2) and peroxidase (PR-9) were induced extremely rapidly (within 2.5 min) and continued to accumulate up to 30 min. Similarly, elicitor caused rapid transcriptional activation of PAL, CHI and PR-1 protein genes within 5 min.

Elicitor stimulated accumulation of defense-related mRNAs was further analyzed by slot blot hybridization. The cDNAs and a synthetic oligo used as probes were both PR-protein (PR-1, PR-9) gene and phenylpropanoid enzymes (PAL, CHI) gene specific. Messenger RNAs corresponding to PR-1 (A), PR-9 (B), PAL (C), and CHI (D) started to accumulate as early as 4 h after the onset of treatment with either elicitors. Maximum accumulation of PR-1-like transcript was observed at 24 h post-treatment with chitosan, Bc-e, and MeJA. The RNA induction pattern for PR-9 gene was shown to be different in that decrease in mRNA accumulation induced by chitosan and SA or Bc-e started 8 and 16 h after treatment, respectively. The maximum of steady-state level of PR-9 mRNA stimulated with MeJA was reached at 24 h. Elicitors induced accumulation of PAL mRNA which reached the maximum at 4 h and afterwards, a decrease in the steady-state level of this mRNA occurred. A biphasic accumulation of transcript represents a typical feature of CHI mRNA induced either with MeJA or with Bc-e. First peak was detected at 4 h and the next one 24 h after the

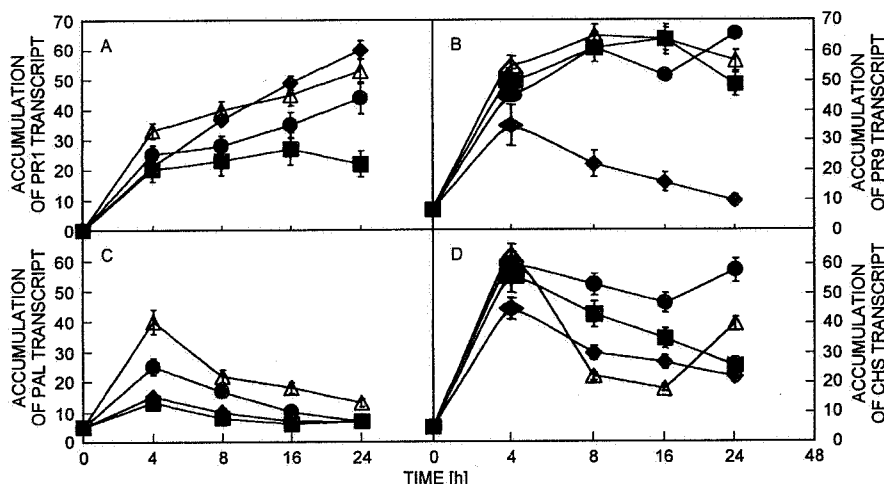


Fig. 8. Kinetics of defense-related mRNA accumulation in grapevine cell suspension cultures treated with four different elicitors. Cell suspensions were treated as indicated in Fig. 6 and total RNA was extracted. Slot blot were hybridized with the biotin labeled probes: PR-1 (A), PR-9 (B), PAL (C), or CHI (D). The data from RNA slot blot analysis was plotted as the relative transcript accumulation using the unelicited sample as the standard. Values are means  $\pm$  SE of three separate extractions analyzed under identical conditions. Elicitors: chitosan (closed diamonds), salicylic acid (closed squares), methyl jasmonate (closed circles), *B. cinerea* elicitor (open triangles).



treatment. Quite different pattern of CHI mRNA accumulation was observed for SA and chitosan, when maximum was reached at 4 h post-treatment and

## Discussion

There are two primary goals of the present work. First, I have developed a model system that demonstrates that defense metabolism is profoundly affected in cell suspension cultures of an economically important grapevine plant following treatment with an elicitor. Second, I have performed a preliminary screen for a set of representative elicitors in an attempt to further and a more precise characterization of an elicitor-stimulated activation of grapevine defense responses.

As an starting point, I have taken four measures to characterize the biological activity of a set of 14 biotic and abiotic elicitors. The relative effectiveness of these elicitors was therefore compared by monitoring the amount of  $H_2O_2$  from the oxidative burst, cell death, extracellular alkalinization, and total soluble PRX activity in elicited versus unelicited cultures. The elicitors I used in a primary screening showed a different biological activity on suspension-cultured grapevine cells. The sequence of elicitor-stimulated events such as the production of  $H_2O_2$  from the oxidative burst accompanied with a marked increase in cell death represents a typical response which is consistent with the previous results (Levine *et al.* 1994). However, chitosan and MeJA whose caused cell death did not trigger substantial accumulation of  $H_2O_2$ . These results indicate no causal connection between  $H_2O_2$  production and triggering the cell death. Several recent studies have revealed that, for example in parsley cells, elicitor-stimulated ROS production was a prerequisite for a later defense gene activation (Jabs *et al.* 1997, Zimmermann *et al.* 1997). A lack of perception by the grapevine cells can be ruled out, since both elicitors were able to trigger downstream responses, among them defense gene activation and/or, in the case of chitosan, medium alkalinization. These results are strongly consistent with the "gain and loss of function" experiments performed by Dorey *et al.* (1999) who clearly demonstrated that  $H_2O_2$  from the oxidative burst was neither necessary nor sufficient to induce cell death in cultured tobacco cells treated with three proteinaceous elicitors from *Phytophthora megasperma*. Alternatively I suggest a hypothesis that in elicitor-stimulated grapevine cells the rapid  $H_2O_2$  response needs a previous stimulation. An analogical situation was recently reported for cucumber (Becker *et al.* 2000). The epidermal cells of hypocotyls from etiolated cucumber seedlings are not constitutively competent for elicitation of the rapid  $H_2O_2$  defense response but needs a previous stimulation, for example by surface abrasion, and a subsequent conditioning period. Since the competence for  $H_2O_2$  elicitation is also induced by fungal spores germinating on the epidermal surface, competence development

thereafter its accumulation has an apparently decreasing tendency (Fig. 8).

appears to be physiologically important (Kauss *et al.* 1999).

Elicitor-stimulated medium alkalinization is considered as a hallmark of plant defense response. Surprisingly, with the except of chitosan, there was no medium alkalinization observed for the rest of elicitors used in our work. Pharmacological studies revealed that elicitor-stimulated ion fluxes, and in particular extracellular  $Ca^{2+}$ , is necessary for the production of ROS (oxidative burst), defense-related gene activation, and phytoalexin production (Hahlbrock *et al.* 1995). From this point of view it is possible that elicitors other than chitosan can require a specific sensitive plasma membrane ion channel which is specifically activated upon addition of particular elicitor. Such a specific ion channel (LEAC) has been recently revealed upon treatment of parsley protoplast with an oligopeptide elicitor derived from a cell wall protein of *Phytophthora sojae* (Zimmermann *et al.* 1997). More recently, in tobacco cells, attenuation of elicitor-induced medium alkalinization by N-acyl ethanolamines (NAE) was clearly demonstrated (Tripathy *et al.* 1999). In tobacco cell suspensions, NAE was formed from NAPE (N-acyl-phosphatidylethanolamine) following xylanase or pathogen elicitor treatment and highly accumulated extracellularly (Chapman *et al.* 1998). Interestingly, in animals NAE inhibited the permeability-dependent  $Ca^{2+}$  release from mitochondria (Epps *et al.* 1982), N-type  $Ca^{2+}$  channel activity (Mackie *et al.* 1993), and gap-junction conductance (Venance *et al.* 1995). Considered as a whole, these results suggest an involvement of NAE in the elicitor-stimulated modulation of ion fluxes at the plant plasma membrane.

Expression of the various physiological and biochemical defense responses in plants is known to be coordinately regulated (Lamb *et al.* 1989, Graham and Graham 1991). The present study demonstrated that elicitor treatment stimulated the accumulation of a wide spectrum of defense-related proteins by either concentration- and/or time-dependent manner. Differential accumulation of these proteins also seems to be strongly dependent on the nature of elicitor itself.

Most of the elicitor-induced enzymes examined so far are induced at the transcriptional level (Hahlbrock and Scheel 1989, Lamb and Dixon 1990). Similarly, my nuclear run-off analyses have confirmed a rapid transcriptional activation of several plant defense response genes, including genes encoding the PR-1, PR-2, PR-9 proteins and the phenylpropanoid pathway enzymes PAL and CHI, in elicited grapevine cells. The kinetics of transcriptional activity of a range of elicitor-

induced genes exhibited considerable variation, suggesting multiple transduction mechanisms for defense gene activation. Similar differential kinetics of gene expression were observed in several other elicitor-treated plants examined, including alfalfa (Oommen *et al.* 1994), parsley (Somssich *et al.* 1989), and tobacco (Baillieul

*et al.* 1995).

In conclusion, these results demonstrate for the first time that various biotic and abiotic elicitors induce in grapevine a set of separate, independent chains of events, strongly suggesting that these elicitors act through a specific perception mechanism.

## References

- Antoniw, J.F., Pierpoint, W.S.: Purification of tobacco leaf protein associated with resistance to virus infection. - *Biochem. Soc. Trans.* **6**: 248-250, 1978.
- Appert, C., Logemann, E., Hahlbrock, K., Schmid, J., Amrhein, N.: Structural and catalytic properties of the four phenylalanine ammonia lyase isoenzymes from parsley (*Petroselinum crispum* Nym). - *Eur. J. Biochem.* **225**: 491-499, 1994.
- Atkinson, M.M.: Molecular mechanisms of pathogen recognition by plants. - *Adv. Plant Pathol.* **10**: 35-64, 1993.
- Baillieul, F., Genetet, I., Kopp, M., Saindrenan, P., Fritig, B., Kauffmann, S.: A new elicitor of the hypersensitive response in tobacco: a fungal glycoprotein elicits cell death, expression of defense genes, production of salicylic acid, and induction of systemic acquired resistance. - *Plant J.* **8**: 551-560, 1995.
- Becker, J., Kempf, R., Jeblick, W., Kauss, H.: Induction of competence for elicitation of defense responses in cucumber hypocotyls requires proteasome activity. - *Plant J.* **21**: 311-316, 2000.
- Bradford, M.M.: A rapid and sensitive method for the quantification of microgram quantities of proteins utilizing the principle of protein-dye binding. - *Anal. Biochem.* **72**: 248-254, 1976.
- Bradley, D.J., Kjellbom, P., Lamb, C.J.: Elicitor-induced and wound-induced oxidative cross-linking of a proline-rich plant cell wall protein—a novel, rapid defense response. - *Cell* **70**: 21-30, 1992.
- Busam, G., Kassemeyer, H., Matern, U.: Differential expression of chitinases in *Vitis vinifera* L. responding to systemic acquired resistance activators or fungal challenge. - *Plant Physiol.* **115**: 1029-1038, 1997.
- Cassab, G.I., Varner, J.E.: Immunocytochemical localization of extensin in developing soybean seed coats by immunogold-silver staining and by tissue printing on nitrocellulose paper. - *J. Cell Biol.* **105**: 2581-2588, 1987.
- Chapman, K.D., Tripathy, S., Venables, B.J., Desouza, A.D.: N-acylethanolamines: formation and molecular composition. - *Plant Physiol.* **116**: 1163-1168, 1998.
- Dorey, S., Kopp, M., Geoffroy, P., Fritig, B., Kauffmann, S.: Hydrogen peroxide from the oxidative burst is neither necessary nor sufficient for hypersensitive cell death induction, phenylalanine ammonia lyase stimulation, salicylic acid accumulation, or scopoletin consumption in cultured tobacco cells treated with elicitor. - *Plant Physiol.* **121**: 163-171, 1999.
- Ebel, J., Cosio, E.G.: Elicitors of plant defense responses. - *Int. Rev. Cytol.* **148**: 1-36, 1994.
- El Ghaouth, A., Arul, J., Grenier, J., Asselin, A.: Glucanohydrolases and inhibitory activity to *Botrytis cinerea* in extracts from strawberry fruits. - *Can. J. Plant Pathol.* **13**: 315-320, 1991.
- Epps, D.E., Pulmer, J.W., Schmid, H.H.O., Pfeiffer, D.R.: Inhibition of permeability-dependent  $\text{Ca}^{2+}$  release from mitochondria by N-acylethanolamines, a class of lipid synthesized in ischemic heart tissue. - *J. Biol. Chem.* **257**: 1383-1391, 1982.
- Giannakis, C., Bucheli, C.S., Skene, K.G.M., Robinson, S.P., Scott, N.S.: Chitinase and  $\beta$ -1,3-glucanase in grapevine leaves. - *Aust. J. Grape-Wine Res.* **4**: 14-22, 1998.
- Graham, T.L., Graham, M.Y.: Cellular coordination of molecular responses in plant defense. - *Mol. Plant-Microbe Interact.* **4**: 415-422, 1991.
- Grosskopf, D.G., Felix, G., Boller, T.: A yeast-derived glycopeptide elicitor and chitosan or digitonin differentially induce ethylene biosynthesis, phenylalanine ammonia lyase and callose formation in suspension-cultured tomato cells. - *J. Plant Physiol.* **138**: 741-746, 1991.
- Guo, Z.-J., Lamb, C., Dixon, R.A.: Release and biological activity of diffusible signal compounds from elicited plant cells. - *J. Plant Physiol.* **151**: 699-710, 1997.
- Hahlbrock, K., Scheel, D.: Physiology and molecular biology of phenylpropanoid metabolism. - *Annu. Rev. Plant Physiol. Plant mol. Biol.* **40**: 347-369, 1989.
- Hahlbrock, K., Scheel, D., Logemann, E., Nurnberger, T., Parniske, M., Reinold, S., Sacks, W.R., Schmelzer, E.: Oligopeptide elicitor-mediated defense gene activation in cultured parsley cells. - *Proc. nat. Acad. Sci. USA* **92**: 4150-4157, 1995.
- Hahn, M.G.: Microbial elicitors and their receptors in plants. - *Annu. Rev. Phytopathol.* **34**: 387-412, 1996.
- Henrissat, B., Sahoheimo, M., Lavaitte, S., Knowles, J.K.C.: Structural homology among the peroxidase enzyme family revealed by hydrophobic cluster analysis. - *Proteins: Struct. Funct. Genet.* **8**: 251-257, 1990.
- Jabs, T., Tschöpe, M., Colling, C., Hahlbrock, K., Scheel, D.: Elicitor-stimulated ion fluxes and  $\text{O}_2^-$  from the oxidative burst are essential components in triggering defense gene activation and phytoalexin synthesis in parsley. - *Proc. nat. Acad. Sci. USA* **94**: 4800-4805, 1997.
- Jacobs, A.K., Dry, I.B., Robinson, S.P.: Induction of different pathogenesis-related cDNAs in grapevine infected with powdery mildew and treated with ethephon. - *Plant Pathol.* **48**: 325-336, 1999.
- Jakobek, J.L., Lindgren, P.B.: Generalized induction of defense response in bean is not correlated with the induction of the hypersensitive reaction. - *Plant Cell* **5**: 49-56, 1993.
- Kauffmann, S., Legrand, M., Geoffroy, P., Fritig, B.: Biological functions of pathogenesis-related proteins: four PR proteins of tobacco have 1,3- $\beta$ -glucanase activity. - *EMBO J.* **6**: 3209-3212, 1987.
- Kauss, H., Fauth, M., Merten, A., Jeblick, W.: Cucumber hypocotyls respond to cutin monomers via both an inducible and a constitutive  $\text{H}_2\text{O}_2$  generating system. - *Plant Physiol.*

- 120: 1175-1182, 1999.
- Kombrink, E., Hahlbrock, K.: Responses of cultured parsley cells to elicitors from phytopathogenic fungi. - *Plant Physiol.* **81**: 216-221, 1986.
- Lamb, C.J., Dixon, R.A.: Molecular communication in interactions between plants and microbial pathogens. - *Annu. Rev. Plant Physiol. Plant mol. Biol.* **41**: 339-367, 1990.
- Lamb, C.J., Dixon, R.A.: Molecular mechanisms underlying induction of plant defense gene transcription. - *Biochem. Soc. Symp.* **60**: 241-248, 1994.
- Lamb, C.J., Lawton, M.A., Dron, M., Dixon, R.A.: Signals and transduction mechanisms for activation of plant defense against microbial attack. - *Cell* **56**: 215-224, 1989.
- Levine, A., Tenhaken, R., Dixon, R., Lamb, C.:  $H_2O_2$  from the oxidative burst orchestrates the plant hypersensitive disease resistance response. - *Cell* **79**: 583-593, 1994.
- Lozoya, E., Block, A., Lois, R., Hahlbrock, K., Scheel, D.: Transcriptional repression of light-induced flavonoid synthesis by elicitor treatment of cultured parsley cells. - *Plant J.* **1**: 227-234, 1991.
- Mackie, K., Devane, W.A., Hille, B.: Anandamide, an endogenous cannabinoid, inhibits calcium currents as a partial agonist in N 18 neuroblastoma cells. - *Mol. Pharmacol.* **44**: 498-503, 1983.
- Malolepsza, U., Urbanek, H.: Changes in peroxidase activity in bean suspension cultures after *B. cinerea* and elicitor treatment. - *J. Phytopathol.* **141**: 314-322, 1994.
- Memelink, J., Linthorst, H.J.M., Schilperoort, R.A., Hoge, J.H.: Tobacco genes encoding acidic and basic isoforms of pathogenesis-related proteins displays different expression patterns. - *Plant mol. Biol.* **14**: 119-126, 1990.
- Monstein, H.J., Geijer, T., Bakalkin, G.Y.: *BLOTTO-MF*, an inexpensive and reliable hybridization solution in northern blot analysis using complementary RNA probes. - *Biotechniques* **13**: 842-844, 1992.
- Olson, P.D., Varner, J.E.: Hydrogen peroxide and lignification. - *Plant J.* **4**: 887-892, 1993.
- Oommen, A., Dixon, R.A., Paiva, N.L.: The elicitor-inducible alfalfa isoflavone reductase promoter confers different patterns of developmental expression in homologous and heterologous transgenic plants. - *Plant Cell* **6**: 1789-1803, 1994.
- Parker, J.E., Schulte, W., Hahlbrock, K., Scheel, D.: An extracellular glycoprotein from *Phytophthora megasperma* f.sp. *glycinea* elicits phytoalexin synthesis in cultured parsley cells and protoplasts. - *Mol. Plant-Microbe Interact.* **4**: 19-27, 1991.
- Preisig, C.L., Kuc, J.A.: Arachidonic acid-related elicitors of the hypersensitive response in potato and enhancement of their activities by glucans from *Phytophthora infestans* (Mont) de Bary. - *Arch. Biochem. Biophys.* **236**: 379-389, 1985.
- Renault, A., Deloire, A., Bierre, J.: Pathogenesis-related proteins in the grapevine induced by salicylic acid and *Botrytis cinerea*. - *Vitis* **35**: 49-52, 1996.
- Repka, V.: Intra- and extracellular isoforms of PR-3 class chitinase in virus-infected cucumber plants. - *Acta virol.* **41**: 71-75, 1997.
- Repka, V., Fischerová, I., Čanigová, K.: Expression of cucumber stress-related anionic peroxidases during flower development or a cryptic infective process. - *Biol. Plant.* **38**: 585-596, 1996.
- Repka, V., Kubíková, J., Fischerová, I.: Immunodetection of PR-1-like proteins in grapevine leaves infected with *Oidium tuckeri* and in elicited suspension cell cultures. - *Vitis* **39**: 123-127, 2000.
- Repka, V., Slováková, L.: Purification, characterization and accumulation of three virus-induced cucumber peroxidases. - *Biol. Plant.* **36**: 121-132, 1994.
- Somssich, I.E., Bollmann, J., Hahlbrock, K., Kombrink, E., Schulz, W.: Differential early activation of defense-related genes in elicitor-treated parsley cells. - *Plant mol. Biol.* **12**: 227-234, 1989.
- Sutherland, M.W.: The generation of oxygen radicals during host plant responses to infection. - *Physiol. mol. Plant Pathol.* **39**: 79-93, 1991.
- Tripathy, S., Venables, B.J., Chapman, K.D.: N-acyl-ethanolamines in signal transduction of elicitor perception. Attenuation of alkalization response and activation of defense gene expression. - *Plant Physiol.* **121**: 1299-1308, 1999.
- Turner, J.G., Novacky, A.: The quantitative relationship between plant and bacterial cells involved in the hypersensitive reaction. - *Phytopathology* **64**: 885-890, 1974.
- Van Tunen, A.J., Mol, J.N.: A novel purification procedure for chalcone flavanone isomerase from *Petunia hybrida* and the use of its antibodies to characterize the Po mutation. - *Arch. Biochem. Biophys.* **257**: 85-91, 1987.
- Venance, L., Piomelli, D., Glowinski, J., Giaume, C.: Inhibition by anandamine of gap-junctions in intercellular calcium signaling in striatal astrocytes. - *Nature* **376**: 590-593, 1995.
- Yano, A., Suzuki, K., Uchimya, H., Shinshi, H.: Induction of hypersensitive cell death by a fungal protein in cultures of tobacco cells. - *Mol. Plant-Microbe Interact.* **11**: 115-123, 1998.
- Zhang, H.B., Zhao, X., Ding, X., Paterson, A.H., Wing, R.A.: Preparation of megabase-size DNA from plant nuclei. - *Plant J.* **7**: 175-184, 1995.
- Zimmermann, S., Nurnberger, T., Frachisse, J.M., Wirtz, W., Guern, J., Hedrich, R., Scheel, D.: Receptor-mediated activation of a plant  $Ca^{2+}$ -permeable ion channel involved in pathogen defense. - *Proc. nat. Acad. Sci. USA* **94**: 2751-2755, 1997.