

THE PREMEIOTIC DNA REPLICATION OF EUCHROMATIN AND HETEROCHROMATIN IN LILIUM LONGIFLORUM (THUNB.)

by

PREBEN BACH HOLM

Department of Physiology, Carlsberg Laboratory,
Gamle Carlsberg Vej 10, DK-2500 Copenhagen, Valby

Key words: Premeiotic DNA replication, heterochromatin, autoradiography

The presynaptic stages of *Lilium longiflorum* have been analyzed in the light microscope. Seven substages can be defined on the basis of changes in morphology of the heterochromatin and the nucleoli. The duration of the presynaptic interval and the substages has been calculated from bud length measurements and cell stage gradients in the anthers. The premeiotic and somatic DNA replication has been investigated using ^3H -thymidine autoradiography. The premeiotic S phase lasts 50 hours whereas the somatic S phase in root tip nuclei is six times shorter. Moreover, premeiotic S phase nuclei house 2–3 times more heterochromatin than somatic nuclei. The premeiotic DNA replication can be divided into three periods: In early S phase the DNA of euchromatin is replicated; in mid S phase synthesis is arrested for a minimum of 9 hours; and in late S phase the DNA of heterochromatin is replicated. DNA synthesis in heterochromatin is correlated with a dispersal of these chromatin regions. Determinations of volume and staining characteristics of heterochromatin after the application of C and Q banding procedures indicate that the premeiotic heterochromatin comprises C bands, Q bands and interbands. The premeiotic DNA replication is discussed in relation to the observed chromatin dynamics, and a proposal is made for the significance of the replication sequence to the formation of the leptotene chromosome and the control of crossing-over.

1. INTRODUCTION

The premeiotic interphase is generally not regarded as an integral part of eukaryote meiosis. Present evidence assigns the crossing – over process to pachytene (24, 64, 77), and three-dimensional reconstructions of leptotene and zygotene nuclei have proven the absence of pre-alignment of homologous chromosomes (27, 57). Several lines of evidence have, however, demonstrated the importance of the

presynaptic interval in the control of the meiotic processes of chromosome pairing, four-strand crossing – over and regular disjunction of the homologous chromosomes during the first meiotic division. The application of radiation, heat shocks and metabolic inhibitors to premeiotic nuclei have a severe impact on chromosome pairing and crossing-over at the later stages (24, 64), indicating that meiosis specific differentiation steps are occurring.

Current hypotheses on the significance of the premeiotic interphase to meiosis are to a large extent based on results obtained with *Lilium longiflorum*. Culture experiments of extruded microsporocytes have demonstrated that the cells become irreversibly committed to meiosis during the premeiotic interphase (54, 63). The premeiotic DNA replication has been reported to be longer than somatic DNA replication (55, 64) a characteristic found in all organisms investigated (3, 17, 19, 50) and in particular in the newt *Triturus* (11, 12, 13). The major phase of premeiotic DNA replication terminates at the onset of leptotene (29, 32, 71) but biochemical analyses have demonstrated that 0.3 % of the DNA in *Lilium* is delayed in replication until zygotene (29, 32). This DNA fraction has been suggested to be of significance for chromosome pairing (29, 32, 59). Histone synthesis has been reported to be uncoupled from DNA replication at this stage (8, 66), and a histone unique to meiosis with properties similar to the H 1 histone is synthesized (60). The chromatin has been reported to undergo compaction before the leptotene stage (5, 6, 74, 75) similar to the situation in other organisms (10, 25). During the presynaptic interval in *Lilium* a succession of stages is identifiable by distinctive changes in the organization of the heterochromatin and the nucleoli, and it has been suggested that the premeiotic heterochromatin might have an impact on the control of the crossing-over process (65).

The present paper analyses the DNA synthesis during the presynaptic interval of *Lilium longiflorum* by autoradiography with special emphasis on the spatial separation of the replication of the DNA in euchromatin and that in heterochromatin. The synthesis pattern is compared to the pattern observed for somatic interphase. The morphology and organization of the heterochromatin at premeiotic interphase is studied with the aid of staining techniques used to characterize the bands of metaphase chromosomes.

2. MATERIALS AND METHODS

2.1 Plant material.

Buds and root tips were obtained from a clone of *Lilium longiflorum* grown in the phytotron of the Royal College of Forestry in Stockholm. The plants were cultivated under a 16 hours light period at 20°C followed by 8 hours in darkness at 15°C. After flowering and withering the bulbs were transferred to a 5°C room for approximately 6 weeks. After this vernalization treatment a new flowering period could be induced. In addition some root tips were obtained from the same clone grown in a greenhouse in the Botanical Garden of Copenhagen. No differences were observed between these two materials.

2.2 Bud length measurements

For growth rate calculations bud length was measured by means of a slide-gauge to the nearest 0.1 mm at 24 hours intervals. In parallel approximately 100 buds were isolated, measured and the anthers fixed for autoradiographical, cytochemical or electron microscopical investigations. These experiments were designed in order to establish a correlation between the presynaptic stages and bud length similar to the ones available for later meiotic stages (20). As described in section 3.1 these experiments failed because of difficulties in measuring with sufficient precision the length of the buds containing interphase and leptotene stages. A more time consuming procedure was therefore adopted in the experiments presented below.

2.3 Labelling procedure for autoradiography

Length of the buds was estimated without disturbing the inflorescence and the buds removed individually at appropriate stages of development. After measuring bud length the perianth was quickly removed and the exposed six anthers measured separately on mm paper. Using a grease free scalpel blade, each anther was slit longitudinally through the connective and immediately transferred to cotton stoppered glass tubes containing approximately 2 ml incubation medium and covered with alufoil. The medium on which the anther halves float was the same as the one used for culturing

meiocytes in vitro by ITO and STERN (38), consisting of WHITE's modified solution + 0.3M-sucrose with pH adjusted to 5.6. Tubes and content were autoclaved at a pressure of 2 atmospheres for 20 minutes at 120°C.

Immediately before use, thymidine-6-³H (Amersham, spec.act. 23 Ci/mM) or thymine-6-³H (Amersham, spec. act. 21 Ci/mM) were added to the culture medium to a final concentration of 50 µCi/ml.

Generally one of the six synchronous anthers was labelled with one of the tracers, whilst another was fixed immediately for cytochemistry. The remaining four were labelled with the other tracer, one of these being selected for DNase treatment. Anther halves were floated on the radioactive solution for two hours at 20°C, washed several times in "cold" medium, briefly blotted dry on filter paper and transferred to glass vials for fixation. One half was fixed in 3:1 (absolute ethanol: glacial acetic acid) for two hours, washed for one hour in three successive changes of 70 % ethanol and stored in 70 % ethanol in a refrigerator. The other half was fixed for one hour in 4 % formaldehyde in 0.05 M-K-phosphate buffer, pH 7.2, divided into three parts (tip, middle and base), and fixed for two more hours. Postfixation was carried out for two hours at room temperature in 2 % OsO₄ in phosphate buffer. The material was subsequently washed twice in buffer and distilled water, dehydrated through a graded water-ethanol series and after one hour immersion in propylene oxide, embedded in SPURR's low viscosity epoxy resin (62). The formaldehyde was prepared as a 40 % stock solution by alkaline hydrolysis of paraformaldehyde at 70°C and adjusted to pH 7.0.

Root tips were labelled in the following manner: actively growing root tips were excised, washed in distilled water and incubated for 30 minutes at 20°C in darkness. The incubation medium contained 5 µCi/ml thymidine-6-³H in distilled water, the same batch of thymidine being used for labelling both anthers and root tips. Fixation was carried out as described for anthers.

The method of QUASTLER and SHERMAN (56) was used for estimating the duration of the

somatic S phases in root tips. Excised and washed root tips were pulse-labelled for 30 minutes as described above and chased at 20°C in darkness for up to 36 hours in a solution of 10 µM/ml non-radioactive thymidine in distilled water. Samples were taken for fixation every second hour after a previous treatment with 0.05 % colchicine for two hours. Fixation was carried out as described for anthers.

2.4 Stage determination

All material embedded in SPURR's resin was sectioned for stage determination, 10 sections approximately 1.5 µm in thickness were cut from each block on a Huxley ultramicrotome using a dry glass knife. Sections of this thickness contain a reasonable amount of chromatin structure, and individual sections can easily be picked up from the knife edge with a pair of forceps. The material was transferred to water droplets on a precleaned slide and dried on a hot plate; after mounting in "Eukitt" the sections were analysed for meiotic stages using phase contrast optics.

2.5 Squashing

The desired stages of anther halves fixed in ethanol acetic acid were identified from the resin embedded sections. The anther halves were allowed to reach room temperature and subsequently hydrolyzed for 6 minutes in 1N HCl at 60°C. Each anther half was transferred to a drop of 45 % acetic acid on a slide, divided into tip, middle and base and slit through the connective. In this way two identical series could be obtained, each containing one locule from tip, middle and base. Each part was squashed in 45 % acetic acid on a slide and frozen in a squash slide freezer, the coverslip was flipped off and the slide washed twice in absolute ethanol. After three washes in 70 % ethanol the squash preparations were stored overnight in a refrigerator. Next day the ethanol was poured off and the slides were allowed to dry in air at room temperature.

2.6 DNase digestion

Air-dried slides from the ethanol acetic acid fixed anthers were transferred to 0.05M-K-phosphate buffer containing 0.003 mol/l-

MgSO₄, pH 6.5 for five minutes, blotted free of surplus buffer and incubated for four hours at room temperature with 0.1 % DNase (DNase I, Worthington, Code DPFF, RNase free) in phosphate buffer. The slides were subsequently washed in buffer, transferred to 5 % TCA for 15 minutes at 0–4°C, washed 15 minutes in cold running tap water, dipped in distilled water and dehydrated to 70 % ethanol. The preparations were either air-dried the same day or stored refrigerated overnight. Control slides were treated identically, omitting DNase in the incubation step.

Formaldehyde fixed material was treated as follows: After three hours fixation in 4 % formaldehyde followed by several washes in buffer, the anther parts were sliced into thin segments and stored refrigerated over night in 0.05M-K-phosphate buffer, containing 0.003 mol/lMgSO₄. The material was then digested for seventeen hours at 20°C in 0.1 % DNase in phosphate buffer, rinsed for 15 minutes in 5 % TCA at 0–4°C and finally washed in buffer and distilled water. Subsequent processing was identical to that described in section 2.3 for embedding in epoxy resin. Controls were carried out by omitting the DNase in the incubation step.

2.7 Autoradiographical procedure

Ilford L4 liquid emulsion was melted at 43°C in a waterbath, diluted with two volumes of preheated water, gently stirred to homogeneity and transferred to a waterbath at 20°C for 30 minutes. The emulsion was then ready; more water was added if necessary to ensure proper emulsion thickness (see below). Air dried slides of squashes and slides with attached resin sections were dipped in the emulsion and placed horizontally on trays for drying over silica gel. This procedure gives a reproducible emulsion layer with a blue to green interference colour indicating an emulsion thickness about twice that of a monolayer. Previous experiments with purple monolayers gave unduly inconsistent results, especially with squash preparations.

When dry, the slides were transferred to black slide boxes with silica gel and exposed for up to three months at 3–5°C. The emulsion was

developed for three minutes at 20°C in full strength Microdol X, transferred to 1 % acetic acid for 30 seconds and fixed in 20 % sodium thiosulphate + 2.5 % potassium metabisulphite for 5–7 minutes. After 15 minutes washing in running distilled water the squash preparations were stained for 15 minutes in 0.05 % Azur B in McIlvaine buffer pH 4.0, washed in distilled water, air dried and mounted in "Eukitt". Other autoradiographs have been stained with Feulgen before the processing for autoradiography and no differences between the Feulgen and the Azur B staining patterns have been observed. After HCl hydrolysis only chromatin structures are stained, and no staining can be observed after DNase treatment. This poststaining method seems to have some advantages over traditional Feulgen staining: no interaction between stain and emulsion can occur during long exposures, and the very faint staining of the emulsions provides a control of emulsion evenness and thickness. The slides with resin sections were viewed in phase contrast.

Silver grains were counted directly from the autoradiographs at a magnification of $\times 1600$. Grain counts were specified for three chromatin fractions: euchromatin, heterochromatin and the junction between the eu- and heterochromatin. The junction will be referred to as hetero-euchromatin border. Nuclear and cytoplasmic activity was counted from a randomly selected area and background from adjacent areas, which in phase contrast proved to be free of cellular debris.

A total of 20 buds ranging in development from early archesporial stages to mid zygotene has been pulse-labelled and analyzed by autoradiography. Other labelling procedures have been tried with less success. Stripped buds i.e. buds where the perianth has been removed (31) were floated on the incubation medium for twenty hours and the anthers fixed in the usual way. Alternatively, anthers have been isolated one at a time from partially opened buds over a period of three days and pulse-labelled.

2.8 Area and volume calculations

Nuclei were selected at random from the autoradiographs of squashed preparations and

photographed on 35 mm Agfa Ortho 25 in a Zeiss photomicroscope. Prints were made at a magnification of $\times 3000$. The outline of the nucleus, defining nuclear area, and the outline of the heterochromatin, defining heterochromatin area, were drawn on semitransparent graph paper and the areas were calculated. The area of euchromatin and borders between eu- and heterochromatin were calculated by subtracting the heterochromatin area from the nuclear area. For volume determinations each chromocenter was assumed to be spherical, and the volume of the individual chromocenters could accordingly be calculated from the area measurement.

2.9 Feulgen, Giemsa C and Quinacrine mustard staining

Giemsa C staining was performed according to I. SUMMER (69), II. VOSA and MARCHI (73) and III. as follows (26): Air-dried squash preparations were treated with 0.01M-Ba(OH)_2 for five minutes followed by incubation for 4–6 hours in $2\times \text{SSC}$ at 60°C , and subsequently stained in Giemsa (R66, GURR) diluted 50 fold with $1/15 \text{ M-phosphate buffer pH } 7.0$.

Quinacrine mustard staining was performed as described by CASPERSSON et al. (14). After initial analysis and photographing of the fluorescence patterns in interphase nuclei,

acetic orcein was added and the slides made permanent. Previously photographed nuclei were identified and rephotographed and the negatives contact copied. Prints from the quinacrine mustard and orcein stained nuclei were now directly comparable and area calculations were carried out as described in section 2.8.

Due to the fluorescence image, the quinacrine mustard stained chromocenters were slightly larger than those stained with orcein. In Table IX the size of the quinacrine mustard stained area of the chromocenters was therefore reduced to correspond to the orcein value.

3. RESULTS

3.1 Growth rates of buds

The presynaptic stages have been found in buds ranging in size from 10–15 mm. Buds of this length are not easily available for measurements since they are partially covered by leaves and other buds in the inflorescence. Measurement in situ therefore always introduces some damage to the buds and has been found to result in a reduced growth rate.

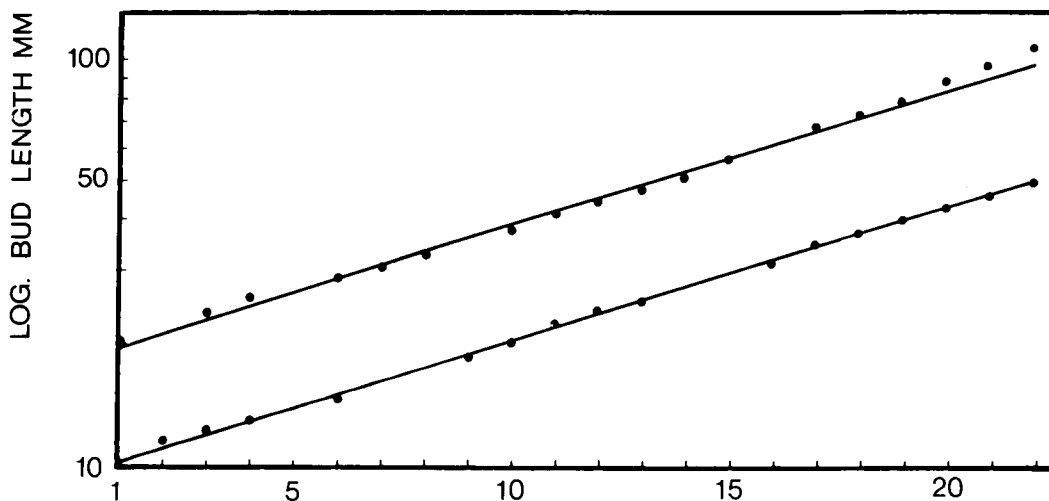


Figure 1. Growth rates for two buds of *Lilium longiflorum*

DAYS

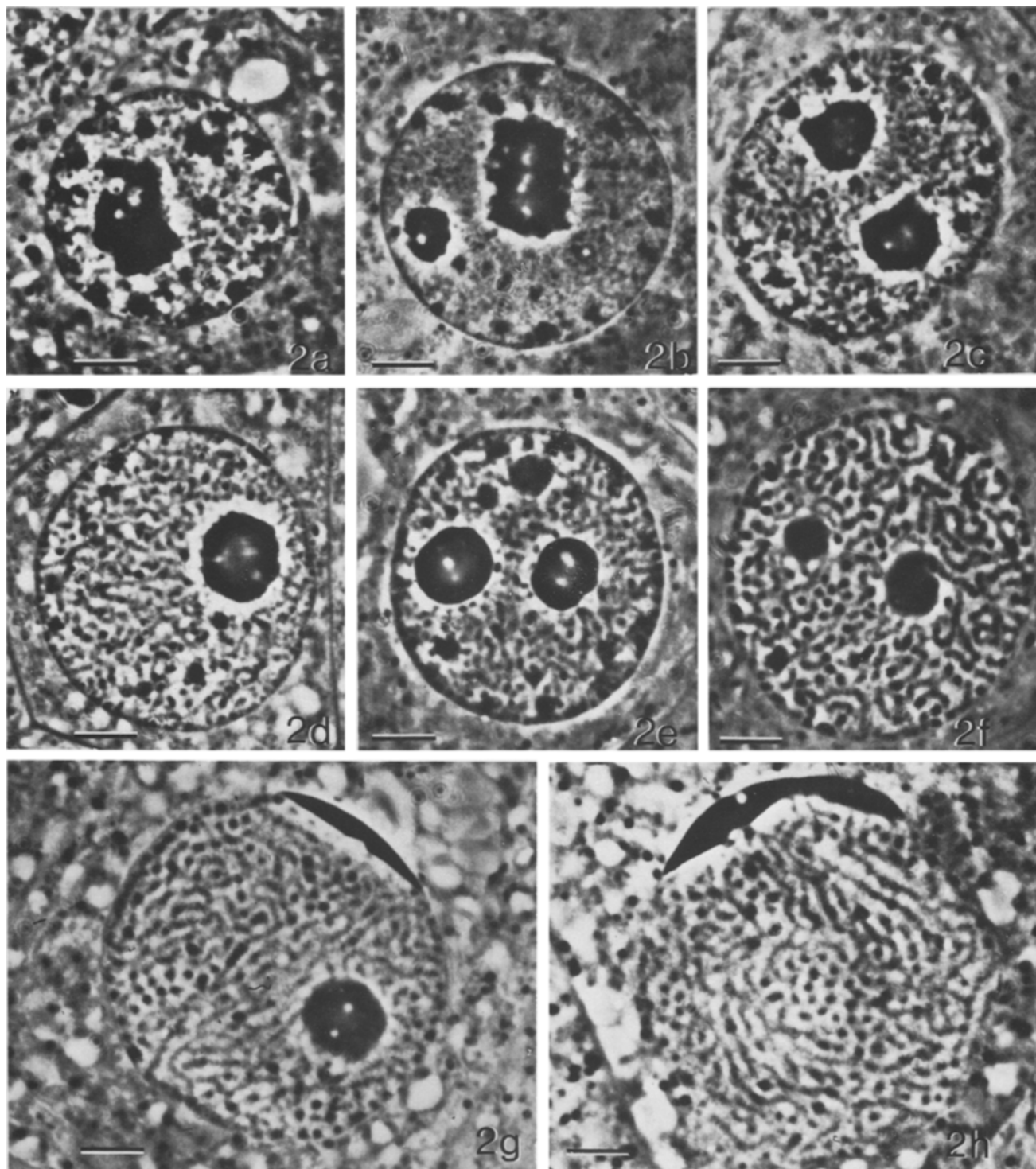


Figure 2. The substages of the premeiotic interphase and leptotene in *Lilium longiflorum*.

Distinct changes in the morphology and distribution of the euchromatin, heterochromatin and the nucleoli can be observed. 2a, G₁; 2 b, S₁; 2c, S₂; 2d, S₃; 2 e, early leptotene; 2f, early-mid leptotene; 2g, mid leptotene; 2 h, late leptotene. Formaldehyde-OsO₄ - SPURR's resin, phase-contrast. × 2000 (Bar = 5μm).

Furthermore measurements are difficult to perform with sufficient precision in a cluster of buds. For these reasons another method had to be used and in combination with the autoradiographical experiments all buds except one were removed from the inflorescence and the remaining bud followed until anthesis. This procedure gives a good logarithmic correlation between bud size and time, demonstrating that buds under controlled conditions have a constant growth rate during the pre- and postsynaptic stages (Figure 1). By insertion of bud length and time into the exponential equation describing the growth curve, a value of 7 % growth pr. 24 hours has been obtained. This growth rate is identical to the ones found in other studies on the growth of *Lilium longiflorum* buds (6, 20, 71).

3.2 Light microscopic morphology of presynaptic stages

A morphological description of the presynaptic stages in *Lilium* has been given by STERN, WESTERGAARD & VON WETTSTEIN (65). The autoradiographical data necessitate a minor extension of the terminology.

Meiocytes in *Lilium longiflorum* generally enter the premeiotic Sphase when the buds are 10–11 mm long. The cells undergo a synchronization during G_1 . Eighteen hours before DNA replication is initiated virtually no mitotic divisions can be found. Since the archesporial divisions are asynchronous, the G_1 period between the last mitosis and the premeiotic S phase must vary from cell to cell and can exceed eighteen hours, but no quantitative data are available on the in vivo schedule of this premeiotic synchronization.

The sequence of morphological changes in presynaptic nuclei beginning in G_1 and extending into leptotene is illustrated in Figure 2. The most prominent changes occur in the heterochromatin or chromocenters and in the nucleoli. During G_1 the heterochromatin is preferentially located close to the nuclear envelope (Figure 2a). The nucleoli are irregular in outline and associated with heterochromatin. Many of the chromocenters stain heterogeneously and appear to consist of regions with high and low density. This heterogeneity is

equally evident after Feulgen, Azur B or orcein staining, as well as in unstained sections viewed in phase contrast.

The transition between G_1 and the first stage of DNA replication, termed S_1 , is accompanied by a large increase in nuclear volume. The chromocenters become more diffuse in outline and may sometimes appear hollow. The nucleoli are unaltered in morphology, and the euchromatin is smoothly distributed in fine threads (Figures 2b, 4). In the following substage, the euchromatic chromatin becomes more conspicuous and can be seen as a reticulum of thicker threads (Figures 2c, 5, 13). This interval is designated as S_2 at the end of which heterochromatin starts to replicate. In the stage termed S_3 the strands are well defined (Figures 2d, 6, 12a-b). The heterochromatin is variable in organization indicating that it undergoes reversible conformational changes. In some nuclei the chromocenters have loosened and are entirely replaced by balls of threads with a staining intensity comparable to those of the euchromatin. In the majority of the nuclei this dispersal of the heterochromatin is limited to minor parts of the nucleus. At this stage the nucleoli begin to transform from an irregular to a round shape.

When the nucleoli are rounded off, the meiocytes have entered the stage defined as early leptotene (Figures 2e, 12c-d). At this stage the heterochromatin has doubled in volume (see section 3.5) and beside the heterogeneous larger chromocenters bipartite chromocenters can be recognized. Extreme condensation of the chromatin, as described for the late interphase-early leptotene stage in certain *Lilium* hybrids and varieties (5, 6, 74, 75) has never been observed in this clone. As the leptotene chromosomes thicken the heterochromatic lumps disappear successively (Figure 2f), and by mid leptotene very little heterochromatin remains. Some heterochromatic lumps can be recognized as local thickenings of leptotene chromosomes (Figures 2g, 12e-f). Concomitantly the nucleoli begin to move towards the nuclear envelope and flatten into crescent shaped structures. This stage is defined as mid leptotene. In late leptotene the only remaining heterochromatin consists of nucleolus associ-

ated knobs. All nucleoli are now flattened and many of them fused along the nuclear envelope (Figure 2h).

3.3 Duration of the presynaptic stages

In the present study the duration of the substages of interphase and leptotene had to be estimated indirectly, as experiments in which individual anthers were removed from partially

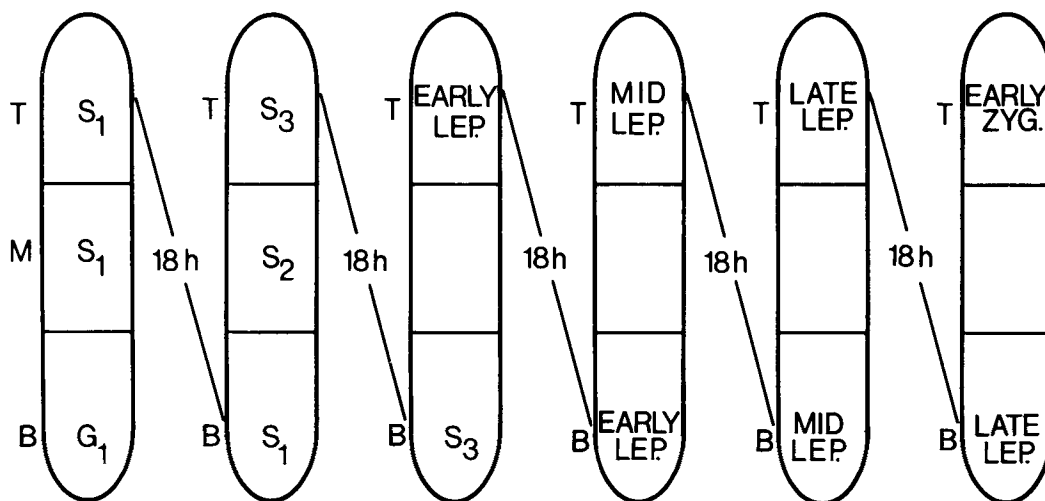


Figure 3. Temporal sequence of the presynaptic stages as elucidated by a continuous series of base-tip gradients in the anthers. The time difference of 18 hours between the gradients was calculated from the mean length of buds housing two adjacent anther gradients and the growth rate of 7%/24 hours, (see Table I). T, tip; M, middle; B, base.

Table I

The time difference between the anther gradients.

The time difference was calculated from the mean bud length housing sequential anther types and the measured growth rate of 7%/24 hours.

SD, standard deviation.

anther gradient	tip	S ₁	S ₃	early leptotene	mid leptotene	late leptotene	early zygotene
	middle	S ₁	S ₂	S ₃	early leptotene	mid leptotene	late leptotene
	base	G ₁	S ₁	S ₃	early leptotene	mid leptotene	late leptotene
number of buds		10	8	3	3	5	6
mean bud length mm		10.9	11.6	12.1	12.8	13.5	14.2
SD		0.7	0.8	0.6	1.4	0.7	1.1
time difference hours		20		16	20	18	17

opened buds at regular time intervals resulted in temporary arrest of the development of the anthers after the initial opening of the buds.

The tip, mid and base part of anthers from 35 buds were analyzed in detail by light microscopic observations of sectioned and squashed material. The existence of a basipetal developmental gradient within the anther as described in other studies of *Lilium longiflorum* (5, 71) has been confirmed. The sequence of stages within the anther has been found to be very consistent and only minor variation was noted among the six anthers of the bud. In most buds all anthers were in perfect synchrony as judged by morphological characteristics, but it was occasionally observed that one anther was slightly more advanced in development at the cellular level.

The presynaptic stages can accordingly be presented as a continuous series of developmental gradients (Figure 3). Moreover it is possible to calculate the time difference between these individual gradients using the mean lengths of buds housing two sequential types of gradients and the observed growth rate of 7 %/24 hours. The results presented in Table I demonstrate that the established sequence of developmental gradients is valid, the individual gradients being separated in time by 16–20 hours. Since the developmental difference between the anther gradients is 2/3 of the base-tip difference, the mean time difference between the stages housed in the tip and the base of the anthers is 24–30 hours. The duration of the individual stages of the presynaptic interval can accordingly be calculated and it can be seen from Table II that the premeiotic S phase and leptotene last for 40–50 hours and 48–60 hours respectively.

3.4 The premeiotic DNA replication

As described in section 3.2 the presynaptic interval can be subdivided by morphological characteristics into seven substages. The following autoradiographical data provide evidence that these substages can be correlated with events in the course of DNA replication.

An example of the autoradiographic data for an anther containing cells in G_1 at the base and in S_1 at the tip is presented in Figure 4 and

Table II

The duration of the presynaptic stages

The duration was calculated from the developmental difference of 27 hours between the stages in the base and the tip of an anther and the mean time difference of 18 hours between the sequential anther gradients.

G_1 :	exceeds 18 hours
S_1 :	18 hours
S_2 :	9 hours
S_3 :	18 hours
early leptotene :	18 hours
mid leptotene :	18 hours
late leptotene :	18 hours

Table III. The most advanced meiocytes localized in the tip of the anther are heavily labelled and have an S_1 morphology (Figure 4). In the middle of the anther, the activity is lower and in the base all meiocytes are very weakly labelled. The results of Table III can be summarized as follows: 1. The majority (75 %) of the nuclear radioactivity is DNase digestible. 2. The labelling over heterochromatin is insignificant, two-thirds of the activity being confined to euchromatin and the remaining one-third to the border between eu- and heterochromatin. 3. Externally supplied thymidine is metabolized and the degradation products incorporated into a non-DNA fraction. The cytoplasmic radioactivity is variable and DNase resistant. 4. Meiocytes in the base of the anther are in the G_1 stage.

An identical pattern has been observed in sectioned material (Table V). The labelling of cells in S_1 is again confined to euchromatin and the border region. 75 % of the nuclear radioactivity is DNase digestible while the cytoplasmic labelling is DNase resistant and variable. The replication characteristics of the subsequent stages in premeiotic S phase are presented in Table IV. Nuclei in the base of the anther show the morphology and the labelling characteristic of the S_1 stage. In the 42 days exposure series approximately 80% of the nuclear radioactivity is DNase digestible. The mid parts of the anthers house meiocytes with S_2 morphology (Figure 5). Nuclear labelling has decreased considerably, with only one of the six analyzed groups of cells showing appreciable

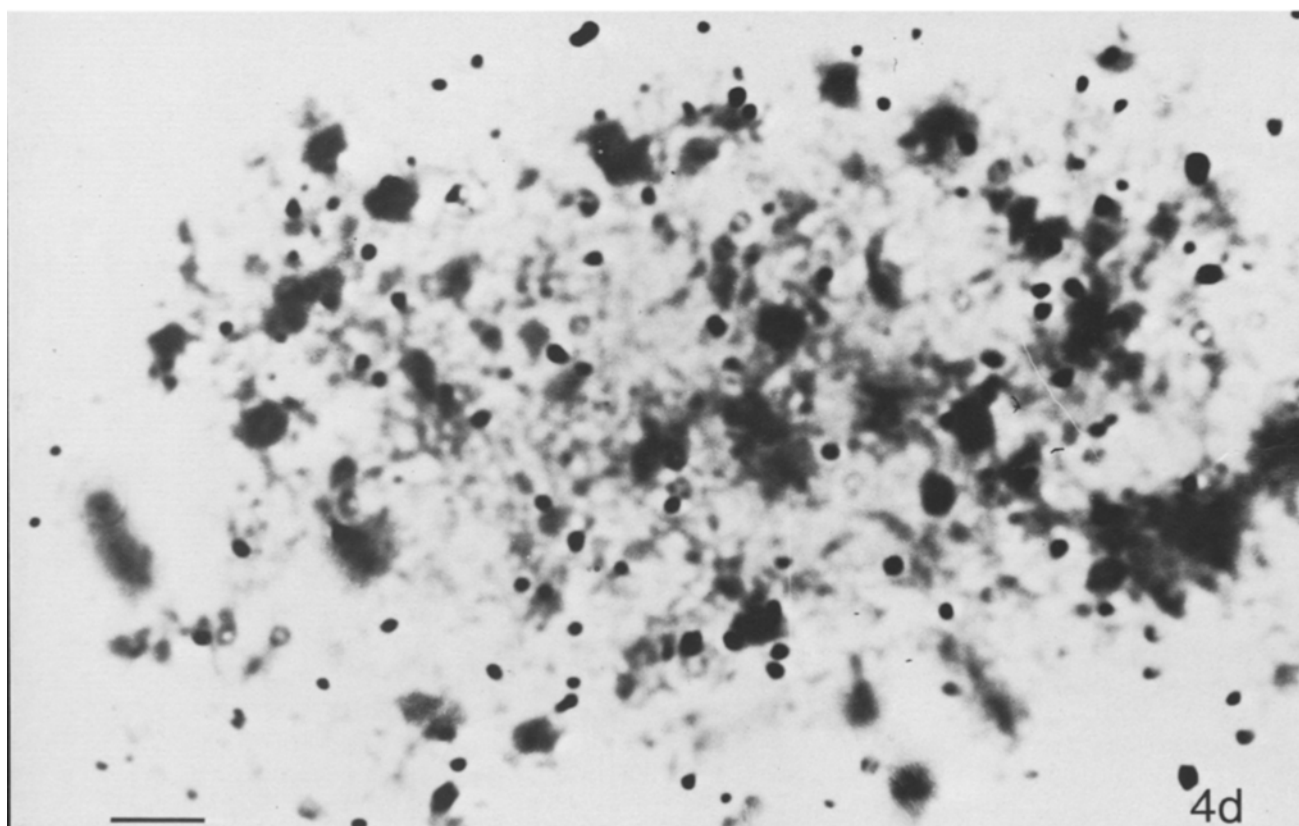
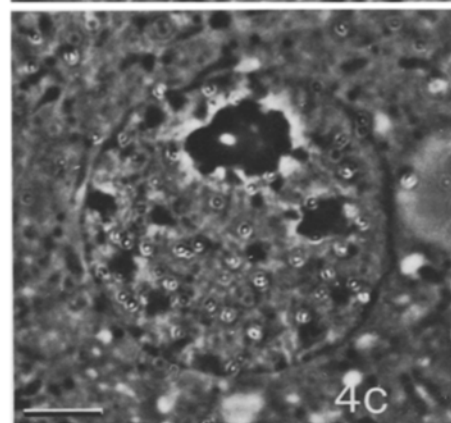
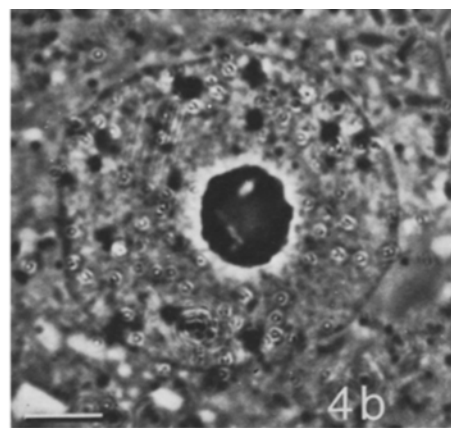
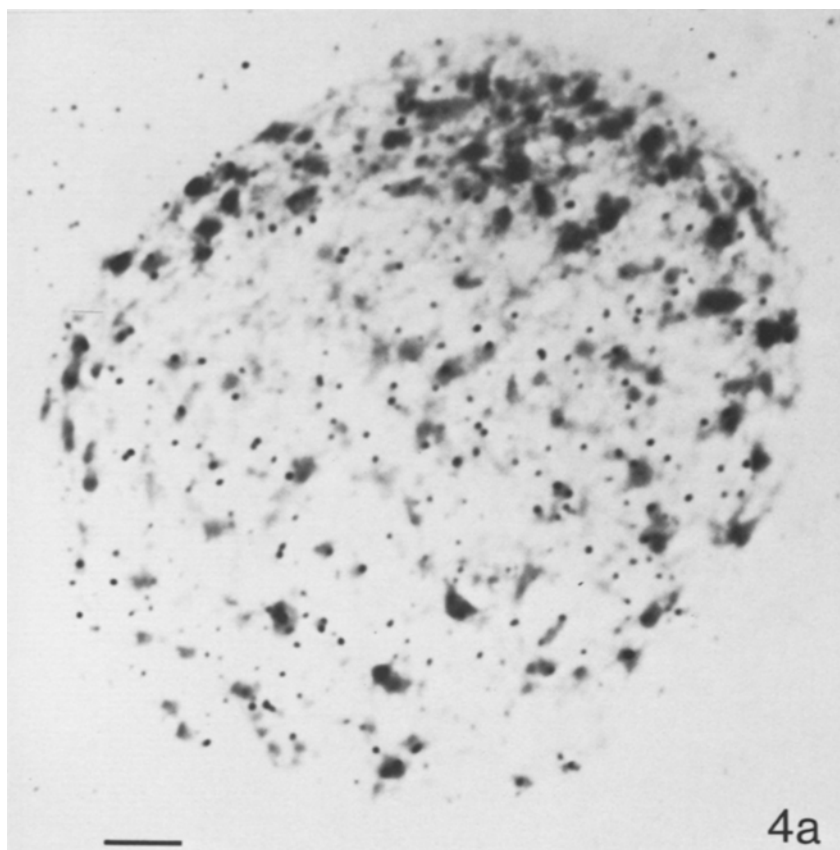


Figure 4. Labelling pattern in premeiotic S_1 nuclei.

The smoothly distributed euchromatin consists of fine fibrils and the majority of the silver grains are located above the euchromatin and the junctions between euchromatin and heterochromatin. Figure 4a. Survey micrograph of squashed nucleus in the S_1 stage. $\times 2000$ (Bar = $5\mu\text{m}$). Figure 4 b-c. Survey micrographs of sectioned nuclei. $\times 2000$ (Bar = $5\mu\text{m}$). 4d. Detail of squashed S_1 nucleus. $\times 6000$ (Bar = $5\mu\text{m}$).

Table III

Incorporation of thymidine-6- ^3H into meiocytes at the premeiotic S_1 stage. Grain counts are given for squash preparations of anther halves labelled for two hours. The number of grains were counted over $900\mu\text{m}^2$ of nuclear area, $900\mu\text{m}^2$ of cytoplasmic area and $900\mu\text{m}^2$ of an area free of cell structures (background). Specific activity of the heterochromatin is obtained from the number of grains on heterochromatin per $1000\mu\text{m}^2$ nuclear area and the area covered by the heterochromatin in this portion of the nucleus. For the calculation of the specific activity of euchromatin and the border between eu- and heterochromatin the area is obtained by subtracting the heterochromatin area from $1000\mu\text{m}^2$. This area thus includes the karyoplasm. The background has been subtracted in both calculations.
a, squashes; b, squashes made as controls to DNase treatment; c, squashes DNase treatment; SE, standard error.

Anther portion	Stage	Procedure	Exposure days	Meiocytes counted	Grains per $1000\mu\text{m}^2$ minus background				DNase sensitive grains per $1000\mu\text{m}^2$	
					nucleus	SE	cytoplasm	SE	nucleus	cytoplasm
tip	S_1	a	45	27	44.1	6.7	15.5	3.0	33.2	0
		b	45	19	47.6	3.2	23.7	2.1	36.7	7.2
		c	45	26	10.9	1.0	16.5	1.9		
middle	S_1	a	45	24	13.8	1.2	13.0	1.4	5.7	1.5
		b	45	27	28.2	2.2	17.6	1.2	20.1	6.1
		c	45	20	8.1	0.8	11.5	1.0		
base	G_1	a	45	15	5.9	1.2	9.0	1.7		
					Grains per $1000\mu\text{m}^2$ nuclear area			Specific activity grains per $1000\mu\text{m}^2$		
					heterochromatin	euchromatin	hetero-euchromatin border	heterochromatin	euchromatin + hetero-euchromatin border	
tip	S_1	a	45	27	1.3	36.3	18.9	6	47	
		b	45	19	1.4	35.1	16.5	9	54	
middle	S_1	a	45	24	0.1	13.2	5.4	0	15	
		b	45	27	0.7	19.5	10.0	8	30	
base	G_1	a	45	15	0	6.5	1.8	0	6	

Table IV

Incorporation of thymidine-6-³H into meiocytes at the premeiotic S₁, S₂ and S₃ stage. For experimental details see Table III. Procedures: a, squashes; b, DNase treatment.

Anther portion	Stage	Proce- dure	Expo- sure days	Meio- cytes counted	Grains per 1000μm ² minus background				DNase sensitive grains per 1000μm ²	
					nucleus	SE	cyto- plasm	SE	nucleus	cyto- plasm
tip	S ₃	a	42	40	12.7	2.2	3.2	0.5	9.5	0.6
		b	42	40	3.2	0.6	3.5	0.6		
		a	70	11	44.3	6.6	7.4	3.2	26.3	4.9
		a	70	20	61.2	3.1	11.0	1.4	43.2	0
		b	70	20	18.0	1.4	15.5			
middle	S ₂	a	42	40	4.1	1.1	1.5	0.9	0	0
		a	42	40	0.1	0.3	0		0	0
		b	42	20	5.6	0.8	3.9	0.9		
		a	70	40	13.5	2.1	5.7	1.5	11.8	4.3
		a	70	40	2.2	1.4	4.9	1.6	0.5	3.6
		b	70	20	1.7	1.0	1.3	1.4		
base	S ₁	a	42	40	37.0	3.3	10.6	1.4	32.0	6.0
		a	42	40	26.0	6.8	2.6	2.3	21.1	0
		b	42	40	5.0	0.8	4.6	1.1		
		a	70	40	62.5	8.1	10.2	1.2		
		a	70	20	19.8	5.4	11.3	2.1		
					Grains per 1000μm ² nuclear area			Specific activity grains per 1000μm ²		
					hetero- chromatin	euchro- matin	hetero- euchro- matin border	hetero- chromatin	euchro- matin + hetero- euchro- matin border	
tip	S ₃	a	42	40	5.1	6.2	4.5	89	8	
		a	70	11	12.5	23.8	16.4	218	34	
		a	70	20	18.8	28.8	24.0	336	46	
middle	S ₂	a	42	40	0.2	3.8	3.4	0	5	
		a	42	40	0	0.2	0.5	0	0	
		a	70	40	0.4	12.2	10.3	0	15	
		a	70	20	0.4	4.2	3.0	0	3	
base	S ₁	a	42	40	1.6	21.1	20.8	15	39	
		a	42	40	0.5	13.3	18.3	1	28	
		a	70	40	1.5	31.5	35.8	10	66	
		a	70	40	1.1	13.2	14.1	7	21	

DNA synthesis (Table IV). Whether synthesis becomes totally arrested during this interval remains to be determined but analyses of grain counts from individual nuclei indicate that the

low levels of activity observed are due to a few nuclei and thus result from asynchrony in the meiocyte population. At the base of the anther 75–90 % of the meiocytes reveal active S₁

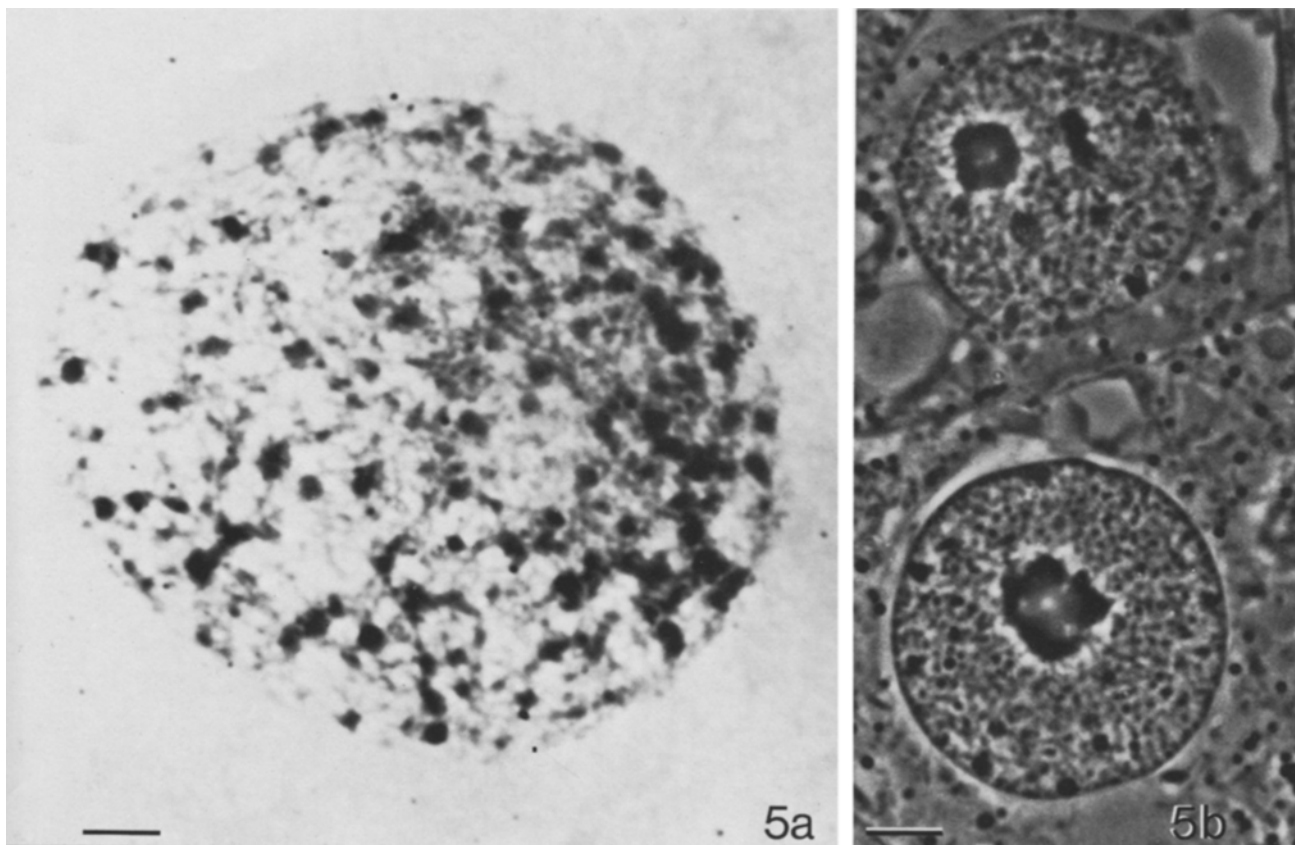


Figure 5. Labelling pattern in premeiotic S_2 nuclei.

The euchromatic fibrils are more prominent than earlier and very few silver grains can be found. 5a. Survey micrograph of squashed nucleus in the S_2 stage. $\times 2000$ (Bar = $5\mu\text{m}$). 5b. Survey micrograph of sectioned S_2 nuclei. $\times 2000$ (Bar = $5\mu\text{m}$).

replication while the remaining nuclei have low grain counts. In the mid part of the anther the reverse pattern is observed. As expected, S_2 cells may also be found in the tip of an anther (Table V).

The final phase in the premeiotic DNA replication, S_3 , is characterized by the DNA synthesis in heterochromatin (Tables IV, V, Figure 6). DNase digestions reduce the radioactivity by 60–75 %. The majority of the grains are still recorded as euchromatic and on the border of the two chromatins, but the specific activity expressed as grains per $1000\mu\text{m}^2$ heterochromatin is extremely high. From both squash and section autoradiography it can be observed that most of the grains

classified as positioned on the heterochromatic border are located on strands and loops extending out from the chromocenters. Clusters of grains over balls of fibrillar chromatin are evident (Figure 6). These observations indicate that heterochromatin is less compacted during replication and re-condensed after replication is completed. The activity recorded as DNA synthesis in heterochromatin is accordingly an underestimate.

The DNA replication continues unchanged through the S_3 period and is terminated at the beginning of early leptotene (Table V). Replication may extend into the first quarter of this period. No evidence for DNA synthesis in mid

Table V

Incorporation of thymidine-6-³H into meiocytes. Grain counts from 2 hours pulse labelled anther halves.
Procedures: a, resin sections ; b, DNase treatment.

Anther portion	Stage	Proce- dure	Expo- sure days	Sec- tions counted	Grains per 1000µm ² minus background				DNase sensitive grains per 1000µm ²	
					nucleus	SE	cyto- plasm	SE	nucleus	cyto- plasm
tip	early- mid leptotene	a	60	32	0		1.2	1.5		
tip	early leptotene	a	60	36	3.5	1.3	2.9	1.2		
middle	S ₃	a	60	33	15.3	1.9	3.3	1.9	13.3	3.3
base	S ₃	a	60	40	14.2	2.4	8.7	1.4	12.2	8.7
base	S ₃	b	60	18	2.0	1.7	0			
tip	S ₂	a	60	40	7.4	1.6	0		1.5	0
middle	S ₂	b	60	17	5.9	2.8	3.7	2.1		
middle	S ₁	a	60	40	24.6	3.7	0		18.6	0
base	S ₁	b	60	20	6.0	1.8	12.7	1.8		
base	S ₁	a	60	26	11.6	1.8	0.8	1.3		
					Grains per 1000µm ² nuclear area			Specific activity grains per 1000µm ²		
					hetero- chromatin	euchro- matin	hetero- euchro- matin border	hetero- chromatin	euchro- matin + hetero- euchro- matin border	
tip	early leptotene	a	60	36	2.0	6.2	1.2		31	2
middle	S ₃	a	60	33	6.6	15.8	4.0		72	10
base	S ₃	a	60	40	4.0	15.3	5.0		60	12
tip	S ₃	b	60	18	1.3	5.8	1.6		16	1
tip	S ₂	a	60	40	1.0	13.3	3.1		10	7
middle	S ₂	b	60	17	0.5	19.9	4.3		0	7
middle	S ₁	a	60	40	0.1	23.0	12.7		0	27
base	S ₁	b	60	20	0	16.8	4.7		0	6
base	S ₁	a	60	26	0.2	10.7	5.3		0	13

and late leptotene has been obtained.

A summary of results from five buds spanning the interval of DNA replication is

presented in Table VI from which it is concluded that the premeiotic S phase consists of two approximately equally long intervals of

Figure 6. Labelling pattern in premeiotic S₃ nuclei.

The euchromatic chromatin fibrils are clearly defined and many silver grains are located on or close to the chromocenters. The chromocenters are looser than in earlier stages and appear as fibrillar balls. 6a, Survey micrograph of squashed nucleus in the S₃ stage. ×2000 (Bar = 5µm). 6b-c. Survey micrographs of sectioned nuclei in the S₃ stage. ×2000 (Bar = 5µm). 6d. Detail of squashed nucleus in the S₃ stage. ×4000 (Bar = 2µm). 6e. Detail of squashed nucleus in the S₃ stage. ×6000 (Bar = 2µm).

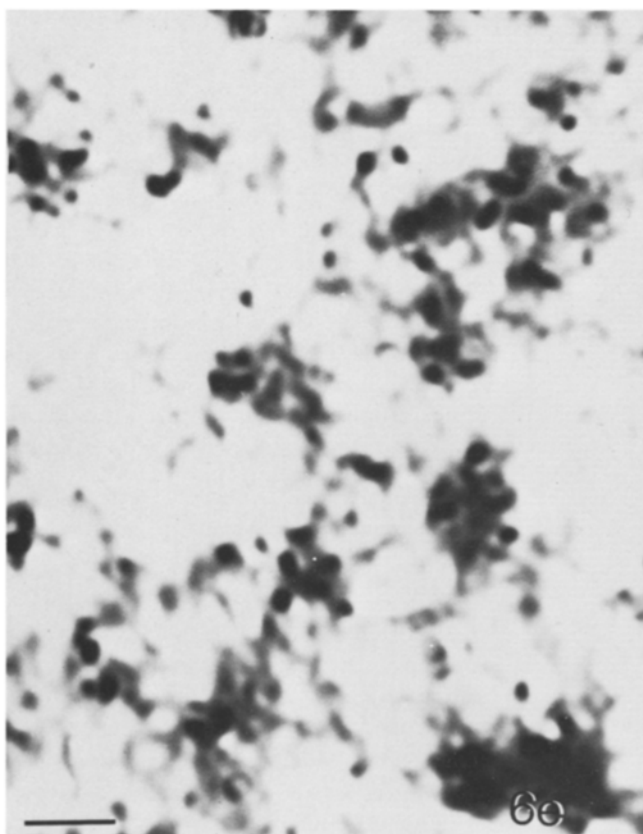
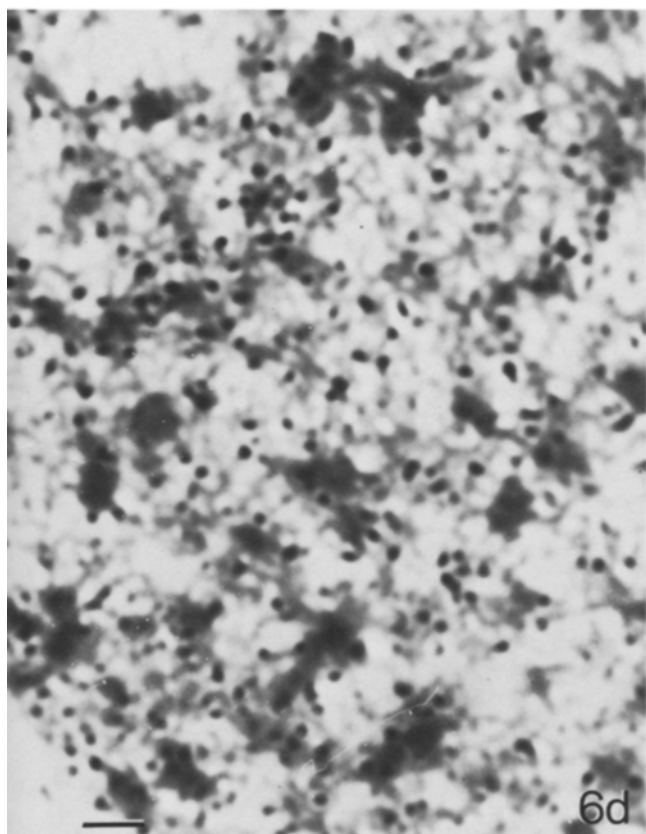
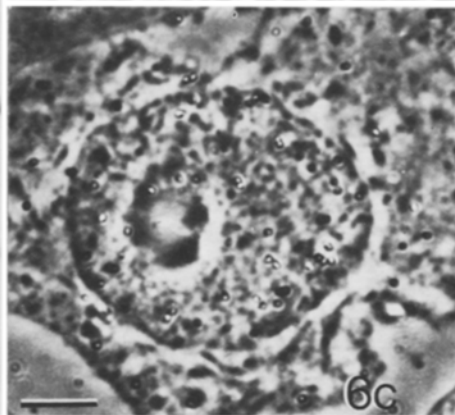
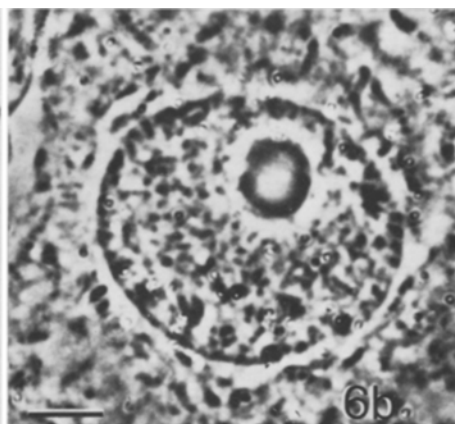
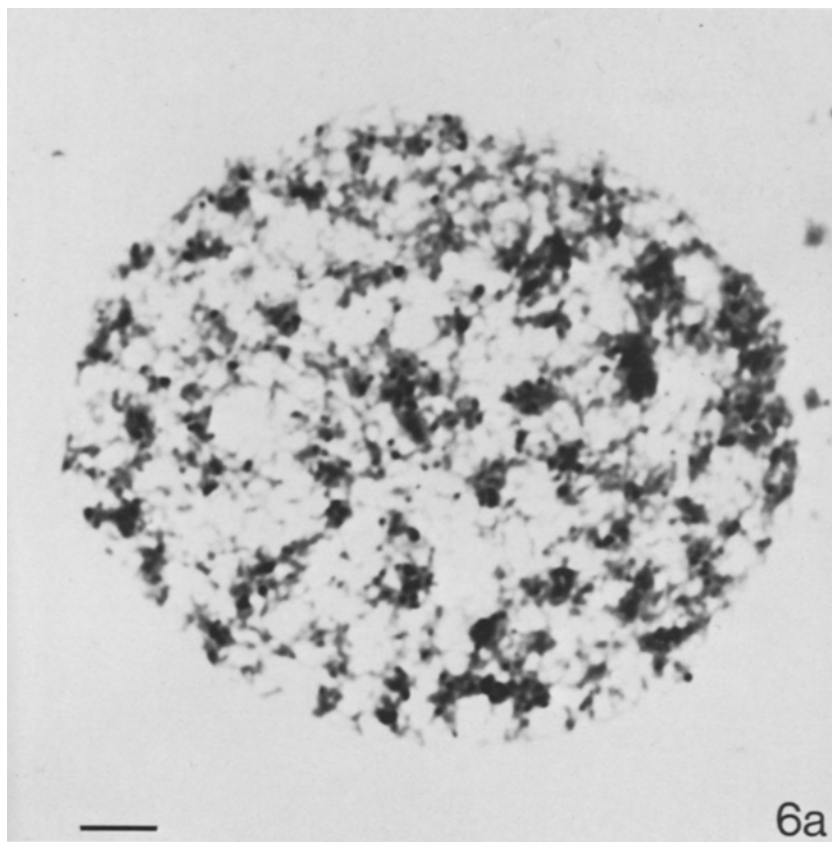


Table VI

DNA synthesis in the different chromatin fractions during the substages of the premeiotic S phase. Summary of data from five buds.

I) Squash preparation corrected to an exposure time of 70 days

II) Squash preparations from the 42 days exposure series

III) Sectioned material

Total synthesis in the different chromatin fractions during the substages of the premeiotic S phase was calculated as follows: Grain counts were corrected for background on the basis of the area measurements and the total synthesis calculated for each substage and chromatin fraction with normalization for the pulse time and the estimated duration of the particular stage. It is assumed that DNA replication extends into the first quarter of early leptotene.

Stage	duration hours	DNA synthesis in heterochromatin %			DNA synthesis in euchromatin + hetero-euchro- matin border			total DNA synthesis %		
		I	II	III	I	II	III	I	II	III
S ₁	18	2	2	0	47	54	52	37	40	43
S ₂	9	1	2	4	4	4	10	3	4	9
S ₃ + early leptotene	22.5	97	96	96	49	42	38	60	56	48
		% of total synthesis								
		23	28	17						

DNA synthesis which are separated by a period with little or no DNA synthesis. Virtually all DNA compacted into chromocenters is replicated late. Grains over heterochromatin comprise on the average at least 23 % of the total (Table VI). As mentioned above, it is likely however that a major fraction if not all of the synthesis recorded in euchromatin at S₃ actually represents DNA synthesis in newly dispersed heterochromatin. Likewise the synthesis recorded for the hetero-euchromatic border at S₃ is considered to represent heterochromatic replication. Thus all of the 50 to 60 % of DNA replicated at S₃ may be assigned to heterochromatin.

A major problem in the investigation of the premeiotic DNA replication has been the metabolization and the low uptake of the thymidine. In an attempt to improve the conditions, thymine was introduced as a tracer of DNA synthesis. The same replication pattern could be observed, but the activity was only 10–20 % of the activity recorded for thymidine. Moreover thymine is also degraded and reused, necessitating large scale DNase controls.

3.5 Volume of heterochromatin in premeiotic nuclei

In order to provide a better understanding of the replication events the heterochromatin volume has been estimated for presynaptic nuclei. The results obtained support the qualitative morphological observations (Figure 7). The slight increase in volume observed between G₁ and S₁ has been found reproducibly and might reflect either the DNA replication in the peripheral parts of chromocenters or additional heterochromatin. In the S₃ nuclei the volume of heterochromatin is found to be the same as in S₁ and S₂ nuclei. One might have expected an increase in the average volume of heterochromatin, signifying its replication. The observed decondensation of the heterochromatin during replication might lead to an underestimate of the volume of replicating chromocenters and compensate for the volume increase in chromocenters already replicated.

At early leptotene the heterochromatin has doubled in volume compared to S₁. The very large range in the distribution of the volumes indicate that replication in heterochromatin is

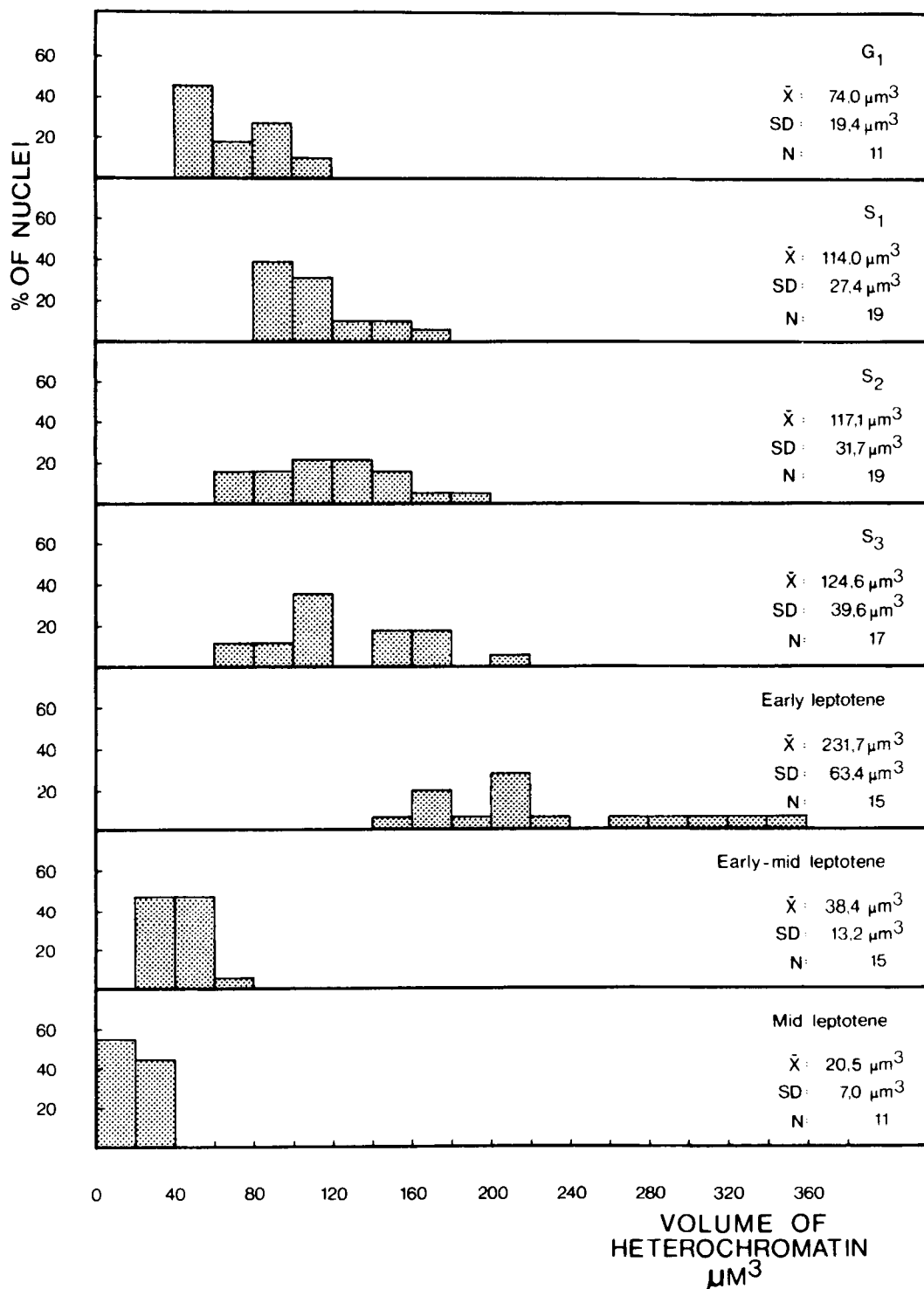


Figure 7. Volume of heterochromatin in premeiotic nuclei. Volume calculations were carried out as described under Methods, section 2.8.

SD, standard deviation. N, number of nuclei

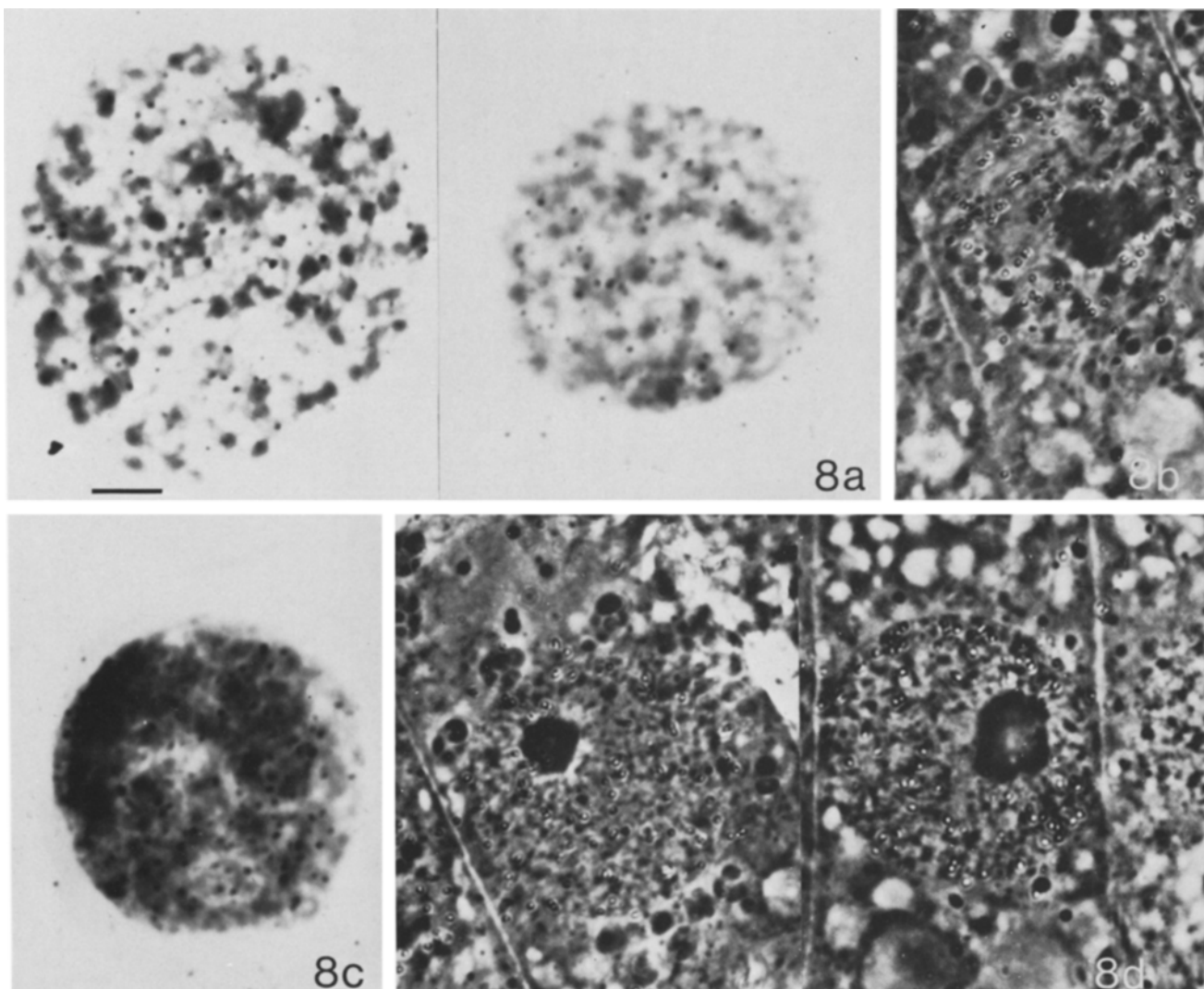


Figure 8. Labelling patterns in root tip nuclei.

In the nuclei of 8a and b the silver grains are located above the euchromatin (S_1 stage). The nuclei in Figures 8c and d illustrate groups of grains above or close to the heterochromatin, S_2 stage. 8a + c. Squashed root tip nuclei. $\times 2000$ (Bar = $5\mu\text{m}$). 8b + d. Sectioned root tip nuclei. $\times 2000$ (Bar = $5\mu\text{m}$).

still going on. It cannot be excluded however that some of the increment in chromocenter size is due to additional condensation of regions being euchromatic during the preceding intervals. The disappearance of the heterochromatin during mid leptotene can also be quantitatively assessed. In late leptotene virtually no heterochromatin can be identified

besides a few nucleolus associated knobs.

An interesting result obtained from the volume measurements is the very large variation in the amount of heterochromatin between synchronous nuclei. Variations in volume of 100–200 % are not due to errors, but must reflect native variations in chromatin compaction between the nuclei.

Table VII

Grain counts from S phase nuclei in the root tip. Five mm long root tips were labelled for 30 minutes with 5 μ Ci/ml thymidine-6- 3 H. The specific activity of the chromatin fractions was calculated from the area measurements of heterochromatin and euchromatin. The very low background was ignored.

Stage	Exposure days	Nuclei counted	Grains over				
			Nucleus	SE	Heterochromatin	Euchromatin	Hetero-euchromatin border
S ₁	30	102	39.8	2.0	0.8	23.9	15.2
S ₃	30	98	47.1	2.1	10.5	23.8	12.8
			Specific activity grains per 1000 μ m ²				
			Heterochromatin			Euchromatin + hetero-euchromatin border	
S ₁	30	102	11			84	
S ₃	30	98	131			71	

3.6 Somatic DNA replication

The duration of somatic S phases were calculated according to the method of QUASTLER and SHERMAN (56). The percentage of labelled metaphases was plotted against the duration of the chase. The plot resulted in a single broad peak. The mean duration of the S phase is defined as the width of the peak at 50 % labelled metaphases. A duration of 8 hours was obtained. Considering that variation in S phase between different tissues of the root tip has been found in other organisms investigated (15), it is reasonable to conclude that DNA replication in root tip nuclei of *Lilium* lasts between 6 and 12 hours. Pulse-labelling of root tip nuclei was performed for comparison of the premeiotic and the somatic S phase. The pulse applied to the premeiotic system covers 4 % of the S phase and that applied to the somatic cells 6 % of the replication period. The labelling patterns should thus be directly comparable.

Root tip nuclei in S phase share some morphological characteristics with the premeiotic nuclei (Figures 8, 14). They contain prominent heterochromatin lumps and the euchromatin consists of fine fibrils. DNA replication seems also in this case to be initiated in the euchromatin and in the border regions between

Table VIII

DNA synthesis in the different chromatin fractions during the somatic S phase. The calculations were performed as described in Table VI, assuming an equal length of the S₁ and the S₃ period.

Stage	DNA synthesis in heterochromatin %	DNA synthesis in euchromatin + hetero-euchromatin border %	Total DNA synthesis %
S ₁	7	52	46
S ₃	93	48	54

euchromatin and heterochromatin (Figures 8a, c) since in one group of nuclei the grains are found preferentially located over the euchromatin. In another group of nuclei the grains are preferentially located over the chromocenters signifying its replication. As in the premeiotic S₃ stage this replication is correlated with a decondensed morphology of the heterochromatin (Figures 8 b, d). No indication of a stage without grains comparable to the premeiotic S₂ interval was obtained.

The radioactivity of 200 nuclei selected at

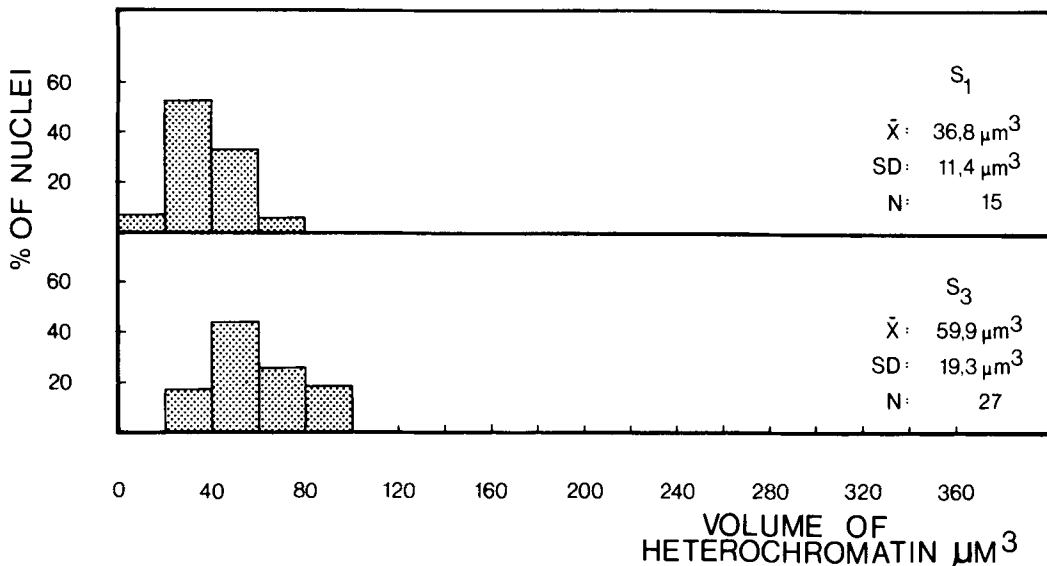


Figure 9. Volume of heterochromatin in root tip nuclei. Nuclei displaying S_1 and S_3 types of replication patterns were photographed and volume calculations carried out as described under Methods, section 2.8. SD, standard deviation. N, number of nuclei

random was recorded and grain counts specified for the different chromatin fractions (Table VII). Approximately 50 % of the nuclei were showing radioactivity in heterochromatin, 50 % only in euchromatin and hetero-euchromatic borders. Assuming that the cell populations of the root tip are asynchronous, the two substages of the somatic S phase are of equal duration. The amounts of DNA synthesis in the different chromatin fractions have been calculated using the area measurements and are given in Table VIII. The results suggest that 50 % of the total DNA synthesis takes place in nuclei which reveal delayed DNA replication in heterochromatin. Moreover it can be calculated from the data in Table VIII that 13 % of the activity is recorded over heterochromatin. As for the premeiotic S phase this figure should be considered as a minimum value for

the amount of DNA located in heterochromatin. Preliminary experiments have demonstrated that if S_3 nuclei are chased for 8 hours, 23 % of the silver grains are localized over heterochromatin of the G_2 nuclei.

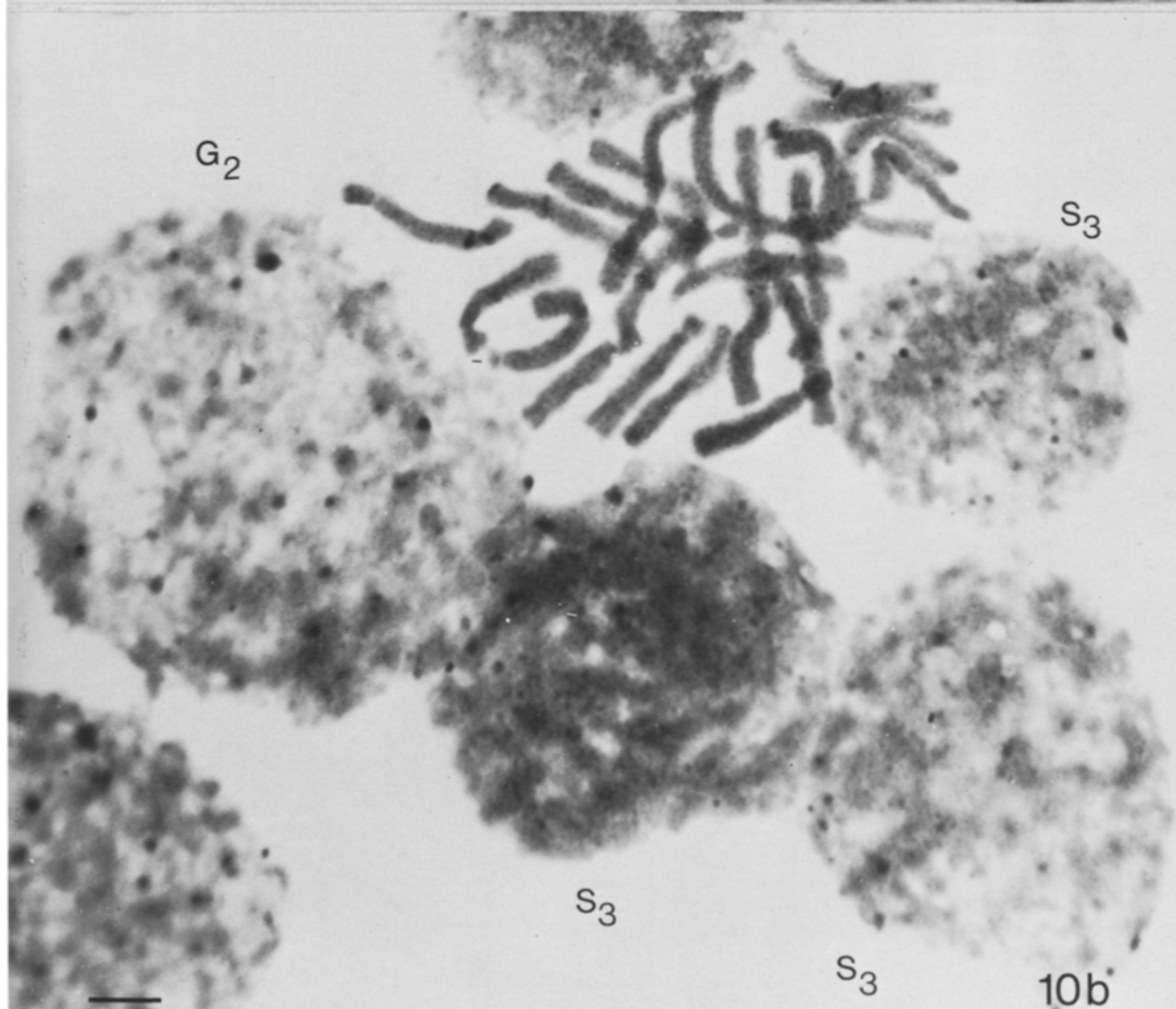
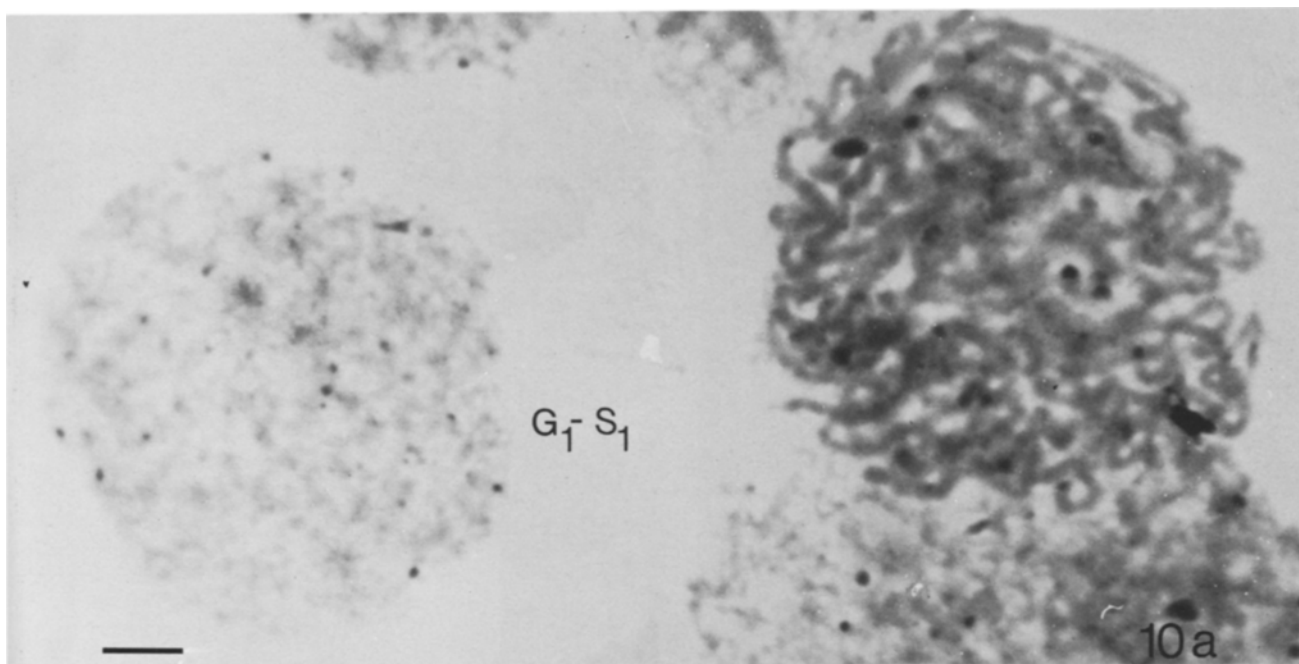
3.7 Volume of heterochromatin in somatic nuclei

Concomitantly with performing the grain counts somatic nuclei showing the S_1 and S_3 type of replication pattern were photographed and the heterochromatin volume calculated as described in section 2.8. As evident from Figure 9, heterochromatin in somatic nuclei is 2–3 times lower than in the premeiotic nuclei.

3.8 The premeiotic and somatic DNA replication in comparison

The differences between the two types of DNA replication can be summarized as follows:

Figure 10. Root tip nuclei stained with the Giemsa C (III) procedure. Nuclei displaying G_1 - S_1 , S_3 and G_2 characteristics are indicated. Giemsa bands on metaphase and prophase chromosomes are included for comparison. The G_1 - S_1 nucleus is characterized by small Giemsa stained chromocenters and smoothly distributed chromatin. The S_3 nucleus has prominent euchromatin and few Giemsa stained chromocenters, whereas the G_2 nucleus contains large Giemsa stained chromocenters. 10a–b. $\times 2000$ (Bar = $5\mu\text{m}$)



1. The premeiotic S phase lasts 50 hours versus 8 hours for the somatic S phase. It is thus 6 times longer.
2. The amount of DNA packed into chromocenters in premeiotic nuclei ($114\mu\text{m}^3$) is two-three fold higher than in somatic S phase nuclei ($37\mu\text{m}^3$). 50–60 % of the replication events in the premeiotic nuclei is associated with heterochromatin.
3. A distinct phase with low or no DNA synthesis lasting a minimum of 9 hours separates the two major replication periods in the

premeiotic S phase. Such a gap is not recognizable in the middle of the somatic S phase.

3.9 Giemsa C staining of interphase nuclei

In an attempt to characterize further the transient premeiotic heterochromatin, Giemsa C and quinacrine mustard banding procedures have been applied. The banding patterns of the karyotype have been presented previously (26). Good morphological preservation and distinct C banding were observed with procedure III

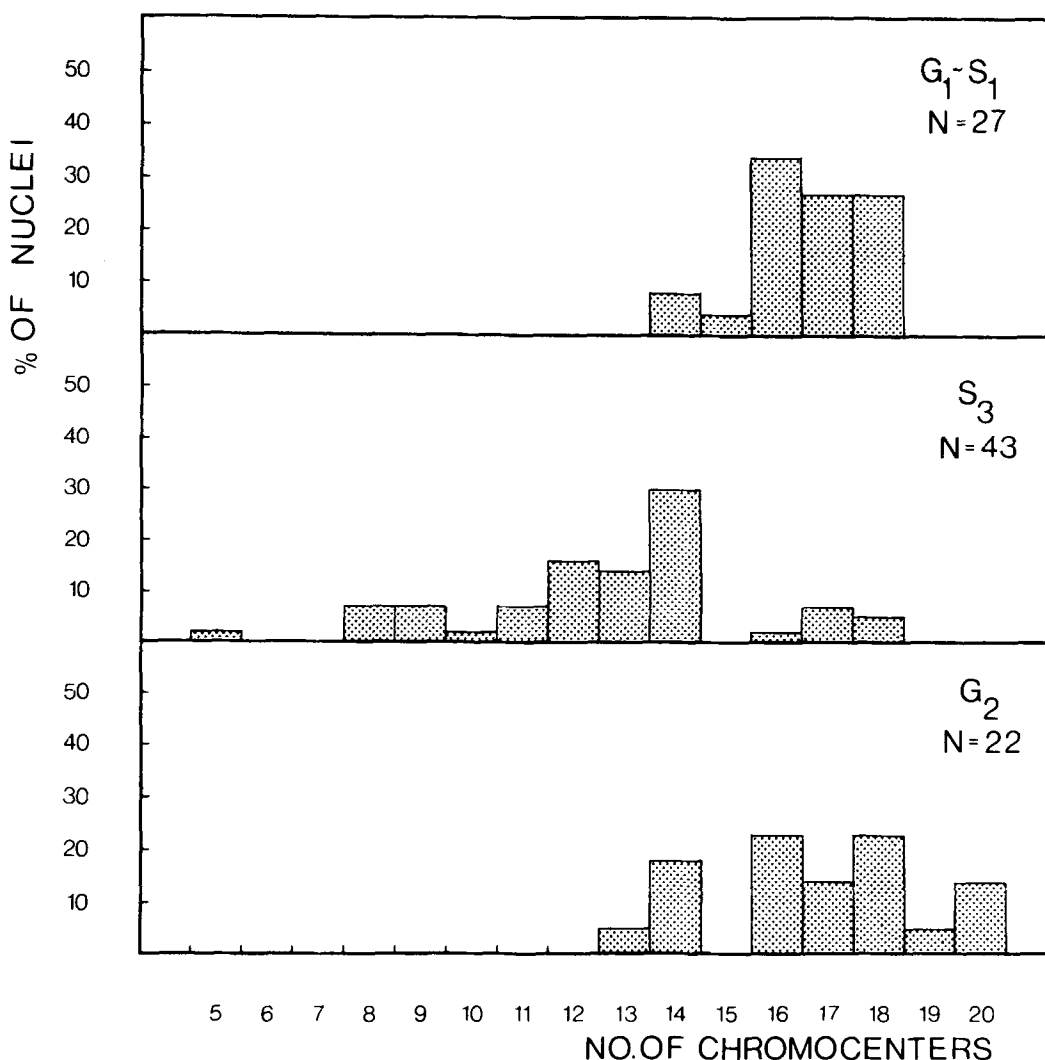


Figure 11. Histogram illustrating the number of Giemsa C stained chromocenters in root tip nuclei. For definition of the stages see section 3.9 and Figure 10. N, number of nuclei.

(see section 2.9). Using this method nuclei from root tips could be separated into three major groups (Figure 10). One displaying several small, distinct chromocenters and smoothly distributed chromatin is considered as stage G_1 - S_1 . Another group with prominent euchromatin and few chromocenters is interpreted as S_3 , whereas the third group with several large sometimes double chromocenters is regarded as G_2 stage.

Giemsa C stained nuclei in squashes were photographed at random, classified as defined above and the number of chromocenters counted (Figure 11). The *Lilium longiflorum* karyotype possess nine major C bands. Besides, tiny C bands have been observed in and around the centromere region, but in an inconsistent way (26). If C bands correspond to heterochromatin as defined by HEITZ (22), 18 major Giemsa C stained chromocenters should be evident in G_1 and G_2 nuclei. The data reported in Figures 10 and 11 support this notion, the G_1 and G_2 nuclei containing between 14 and 18 Giemsa C stained chromocenters. The minor reduction in the average number could be due to fusion, but the alternative possibility, that a few of the C banded regions have decondensed during G_1 - S_1 and G_2 cannot be excluded. The presence of 19 or 20 chromocenters in some G_2 nuclei could reflect the occasional occurrence of C bands in and around the centromere region.

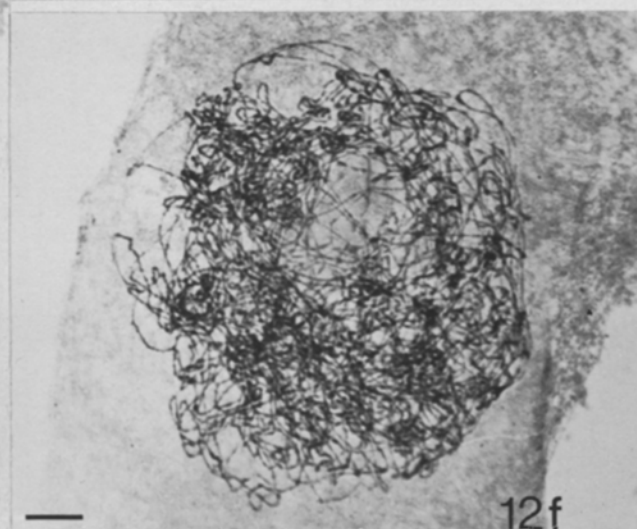
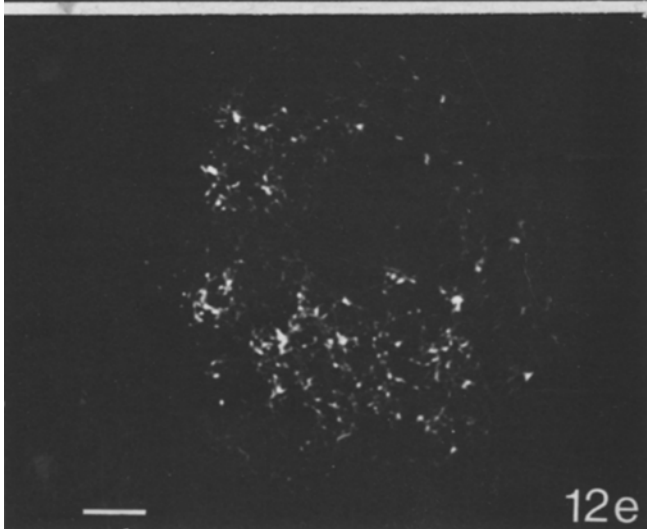
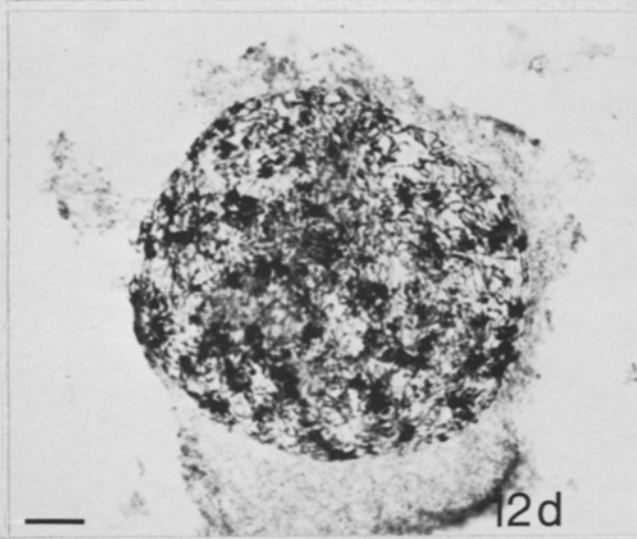
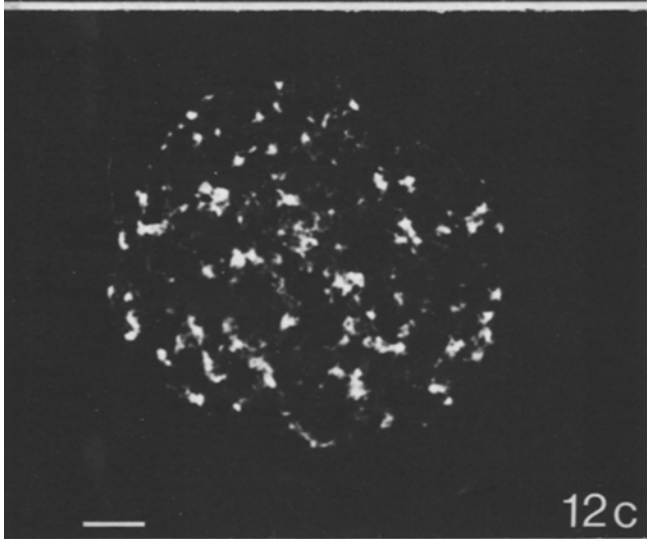
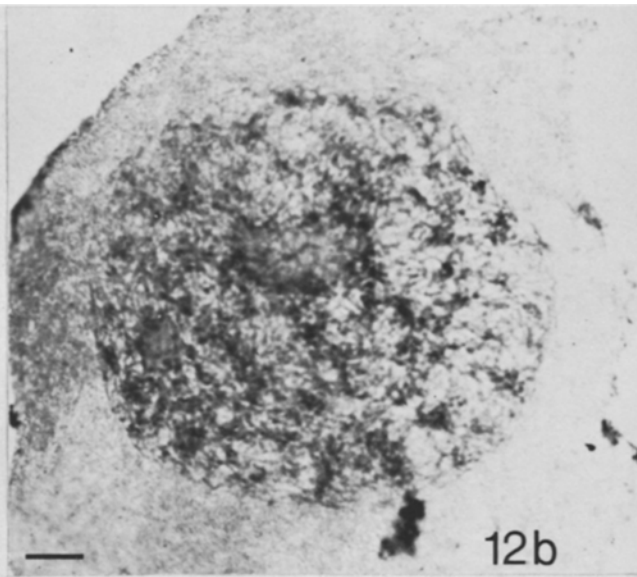
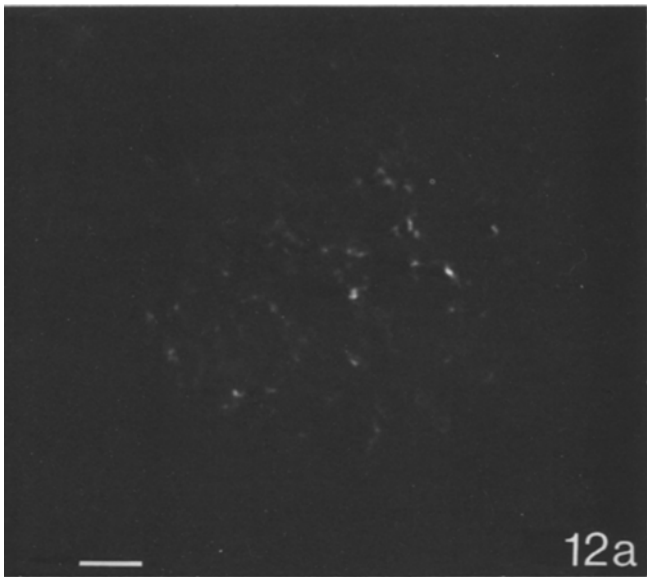
The number of Giemsa stained chromocenters in the nuclei classified as S_3 is reduced as compared to earlier and later stages. As the chromocenter's DNA replicates during the S_3 interval the reduction in Giemsa stained chromocenters is regarded as a loss of Giemsa C staining capacity during replication in agreement with the decondensation of chromocenters observed in these nuclei. Due to limited amounts of material it has not been possible to investigate the banding characteristics of premeiotic nuclei and archesporial metaphase chromosomes to the same extent as for root tips. Only procedure II (section 2.9) has been used, and no quantitative data are therefore reported. The banding pattern of colchicine treated metaphase chromosomes in anthers was similar to the pattern observed in root tip

chromosomes, and a reduction in the number of Giemsa stained chromocenters during premeiotic S_3 has been observed. The number of Giemsa C stained chromocenters was of the same order of magnitude for premeiotic G_1 and S_1 as for somatic G_1 - S_1 .

3.10 Quinacrine mustard staining of interphase nuclei

The number of Q bands observed in the chromosomes of *Lilium longiflorum* is very high; 40–50 % of the chromosome volume has been observed to be fluorescent after quinacrine mustard staining (26). Moreover only one C banded region of the chromosomes demonstrates reduced fluorescence. The abundance of Q bands and the low number of C bands in *Lilium longiflorum* chromosomes has recently been confirmed by KONGSUWAN and SMYTH (40). As an initial approach the Q banding patterns of colchicine treated archesporial metaphase chromosomes were investigated. No difference has been observed between in Q band pattern of the chromosomes in the anther tissue and those from root tips in a series of buds ranging in size from 2–3 mm to 9.5 mm.

The fluorescence patterns of interphase nuclei after staining with quinacrine mustard have been investigated for all stages from early archesporial development to late leptotene. The slides were post-stained with orcein to permit a comparison with the pattern of chromocenters revealed by the latter technique. The dynamic changes in amount and distribution of heterochromatin previously described during S_3 and leptotene are especially evident in these preparations (Figure 12). Little heterochromatin is observed during the S_3 phase (Figures 12 a, b). The heterochromatin is again prominently condensed at early leptotene (Figures 12 c, d). In late leptotene very little fluorescent heterochromatin can be observed in parallel with the few remaining heterochromatic lumps visible by orcein staining on the chromosomes. Fluorescence and staining intensity with orcein is closely parallel when comparing individual chromocenters. Area calculations from a population of S_2 nuclei are presented in Table IX. In the



majority of the nuclei an identical amount of heterochromatin is observed after quinacrine mustard and orcein staining of the same nuclei (Figures 13 a, c). This is easily judged if the micrographs of the orcein stained nuclei are printed with reverse contrast. In some nuclei however, the amount of heterochromatin stained with orcein is considerably larger (Figures 13 b, d).

In root tips the interphase nuclei can be staged clearly by staining with quinacrine mustard (Figure 14). In the G_1 - S_1 stage the chromocenters are characterized by an even fluorescence. In S_2 a few strongly and some weakly fluorescing chromocenters are found, the latter probably corresponding to decondensed centers in the state of replication. The few strongly fluorescing chromocenters may represent already replicated and recondensed heterochromatin. The G_2 nuclei are characterized by intensely fluorescing, partly bipartite chromocenters.

4. DISCUSSION

4.1 Labelling procedure

The series of relative short presynaptic stages in *Lilium longiflorum* require a pulse-labelling procedure in order to obtain a resolution of the different stages in the premeiotic DNA replication. It was accordingly considered desirable to use a shorter labelling method than that of TAYLOR and MCMASTER (71), in which whole buds are incubated for 24 hours. Pulse-labelling of whole anthers and extruded meiocytes is not feasible. HOTTA and STERN (30) reported that there is a poor penetration of nutrients and tracers through the anther filament in excised anthers, and extruded meiocytes cannot be

Table IX

Area of heterochromatin in a population of nuclei in S_2 after staining with quinacrine mustard and acetic orcein. Q.M., quinacrine mustard
 \bar{X} , mean area ; SD, standard deviation

Nucleus No.	Heterochromatin area μm^2		Q.M. area / orcein area %
	Q.M.	orcein	
1	122.8	179.3	68
2	272.5	272.5	100
3	238.0	238.0	100
4	210.3	220.3	95
5	123.8	131.8	93
6	217.5	217.5	100
7	151.0	167.1	90
8	105.5	106.8	99
9	184.8	191.8	94
10	150.5	161.5	93
11	166.5	166.5	100
12	53.8	125.8	43
13	107.0	177.8	61
14	73.3	79.1	93
15	87.8	102.8	85
16	96.5	96.5	100
17	101.5	N.D.	
18	78.5	N.D.	
19	176.5	N.D.	
20	215.3	N.D.	
\bar{X} : 146.7 \bar{X} : 164.7 \bar{X} : 89%			
SD : 59.9 SD : 53.5			

cultured appropriately during this interval since they revert to a mitotic division or undergo an achiasmatic meiosis (54, 63).

In the present procedure anther halves are floated on nutrient solution, and the meiocytes are still protected within the anther. No indications for preferential uptake of tracers in particular parts of the anther have been observed, and no aberrations have been observed to take place.

Metabolization of thymidine and thymine into other molecules than DNA could not be

Figure 12. Morphology of meiotic nuclei in S_2 (a,b), early leptotene (c,d) and mid leptotene (e,f) after staining with quinacrine mustard (left, a,c,e) and after staining of the same nuclei with orcein (right, b,d,f). During the S_2 stage the heterochromatin is largely dispersed. At early leptotene it is prominently visible with both techniques. At mid-leptotene the heterochromatin is again decondensed. Identical patterns of heterochromatin are obtained with the two techniques. $\times 750$ (Bar = $10\mu m$).

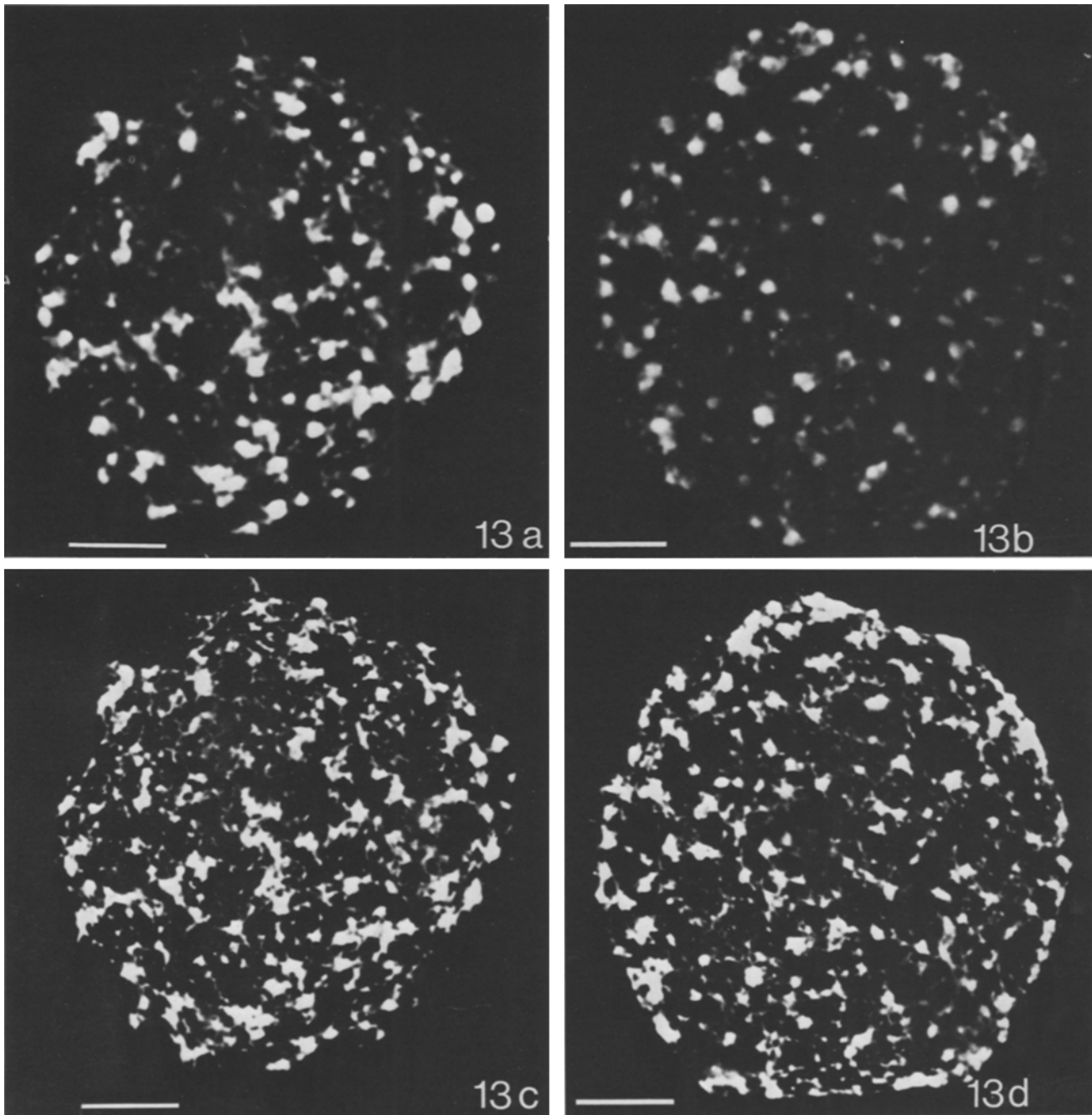


Figure 13. Pairs of light micrographs of two squashed nuclei in the premeiotic S_2 stage, stained with quinacrine mustard (a,b) and subsequently with orcein (c,d). The micrographs of the orcein stained nuclei were printed with reversed contrast to facilitate the comparisons.

Identity of the chromocenters made visible with orcein and quinacrine mustard is evident in the nucleus of Figures 13a and c. Only few of the chromocenters visible in the nucleus of Figure 13d fluoresce.

$\times 1500$ (Bar = $10\mu m$)

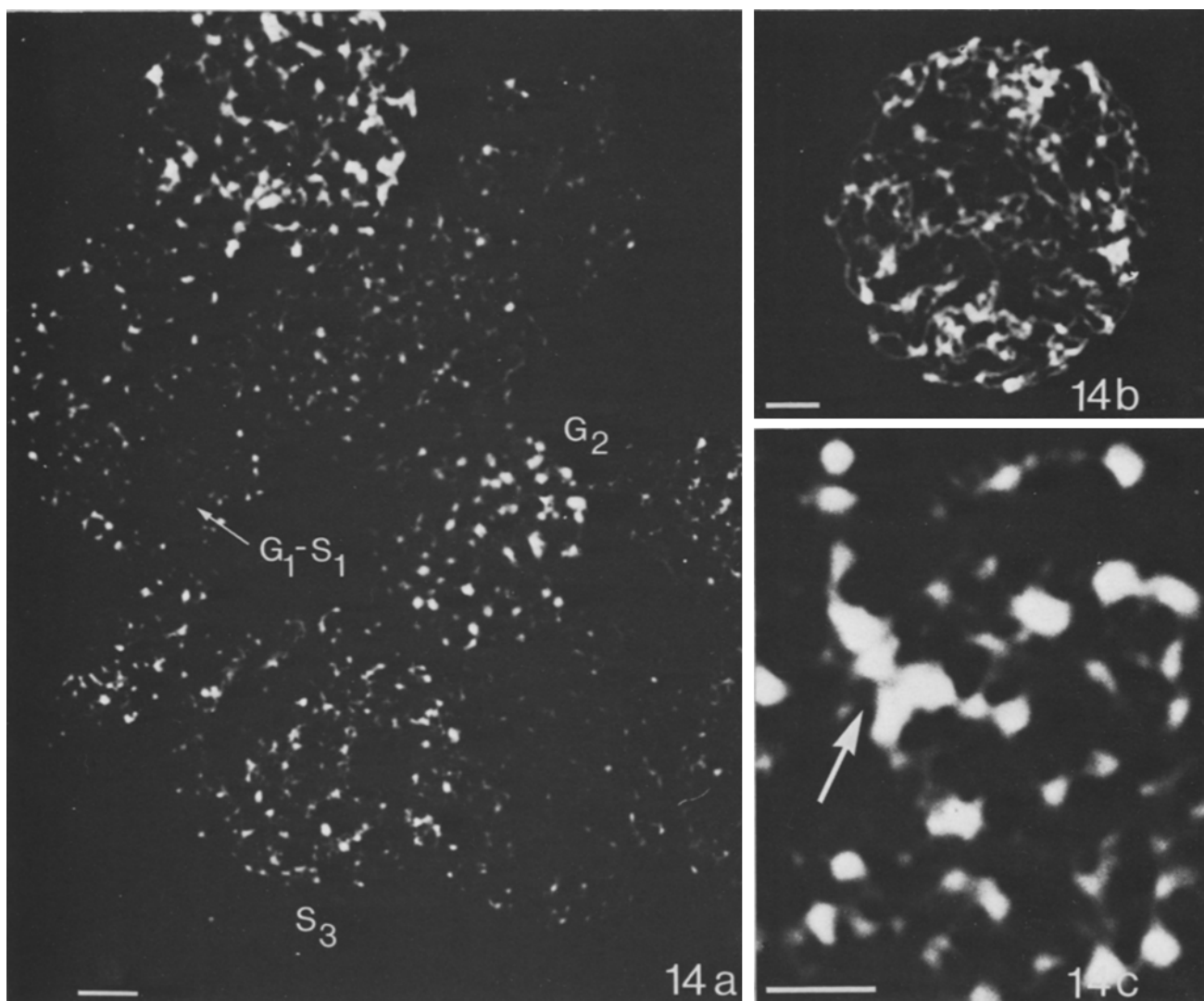


Figure 14. Fluorescence patterns in squashed root tip nuclei after staining with quinacrine mustard.

14a. Interphase nuclei in the G_1-S_1 stage can be identified by small evenly fluorescing chromocenters. The S_3 phase is characterized by a few strongly and some weakly fluorescing chromocenters. In G_2 big partly bipartite chromocenters fluoresce intensely.

$\times 750$ (Bar = $5\mu m$)

14b. Nucleus in mitotic prophase. $\times 750$ (Bar = $5\mu m$)

14c. Detail of a G_2 nucleus, composite chromocenters can be observed, arrows. $\times 3000$ (Bar = $5\mu m$).

adequately reduced. This situation which severely limits the usefulness of autoradiography has been reported repeatedly and seems to be a universal feature for anthers and buds (37, 38, 44, 70).

4.2 The premeiotic DNA replication

The present investigation has confirmed that DNA replication is terminated at the beginning of the early leptotene stage. In ultrastructural investigations I have found very few and ill

defined lateral components at early leptotene in agreement with earlier results (65). The lateral components are accordingly first formed after the replication of the vast majority of the DNA is completed. This is in agreement with results obtained in the ascomycete *Neottiella* in which DNA replication takes place prior to nuclear fusion (58, 76) and with the autoradiographical and photometrical studies on the premeiotic DNA replication in *Lilium* by TAYLOR and MCMASTER (71), who have demonstrated a termination of DNA replication before leptotene. Biochemical studies have revealed that only 0.3 % of the DNA remains unreplicated during leptotene (29, 32) and that this DNA is replicated during zygotene. Studies of other organisms have likewise shown a termination of DNA replication prior to leptotene (17, 39, 46) or even before zygotene (13, 18).

4.3 The phases of the premeiotic and somatic DNA replication

Three major characteristics of the premeiotic S phase have been observed in the present study: 1. All DNA in chromocenters is late replicating. 2. DNA replication in chromocenters is correlated with reversible decompaction of the heterochromatin. 3. Premeiotic DNA synthesis in euchromatin and heterochromatin is separated by a gap. The first two characteristics are shared with the somatic S phase.

A delayed DNA replication in constitutive and facultative heterochromatin has been found to be a general rule in somatic cells (45), and available information on the premeiotic DNA synthesis likewise suggests a similar nonrandom replication (13, 21, 39, 43). Asynchronous replication of the DNA in centromeric heterochromatin of homologous chromosomes has been reported in the mouse (39) and early replication of DNA in some heterochromatic segments was found in the grasshoppers *Myrmeleotettix* and *Corthippus* (21).

The molecular mechanisms behind this differential timing of DNA synthesis in different chromatin portions are unknown. Analysis of the delayed replication of facultative

heterochromatin (43, 51), suggests that compaction of chromatin imposes a physical constraint on the initiation of DNA replication. This hypothesis has obtained further support by the autoradiographical observation that DNA synthesis takes place only in diffuse chromatin (41, 61), and that chromocenters are decondensed while replicating (1, 42, 48, and this study). The dispersion of chromocenters during S phase has been questioned (16, 53,) and NAGL (53) reported that the dispersion stage (*Zerstäubungsstadium*), as described by HEITZ (23), marked instead the entry of the nucleus into the mitotic prophase. The results of the present investigation can resolve this conflict. Orcein and quinacrine mustard staining reveal a brief, reversible dispersion of chromocenters during the last part of premeiotic and somatic S phase in *Lilium longiflorum*. After recondensation at early leptotene and at somatic G₂, the volume of the chromocenters has doubled, most likely due to their replicated state. The chromocenters loose their compactness and distinct staining behaviour as they are incorporated into the condensing leptotene chromosome and somatic prophase chromosome respectively. The decondensation of heterochromatin reported to take place during the premeiotic interphase in *Plantago* (36) and *Oenothera* (49) and a subsequent condensation of the dispersed heterochromatin before the entry of the nucleus into leptotene may be analogous to the situation found in lily.

A major gap in the middle of the premeiotic DNA replication as found in the present investigation has not been reported from other organisms. Waves of DNA synthesis have been reported for somatic cells, however (67, 68), and evidence for a minor delay in DNA replication in the middle of the somatic S phase of root tip nuclei has been presented for *Vicia* (35) and *Zea* (15). It is conceivable that the temporary arrest in the middle of premeiotic DNA replication relates to the very protracted S phase.

4.4 Duration of the premeiotic S phase

The premeiotic S phase in *Lilium longiflorum* has in the present study been found to last approximately 50 hours, while the duration of

the somatic S phase in root tips is on the average 8 hours. This increase by a factor 6 is in good agreement with the results from *Triturus* where the premeiotic and somatic S phases lasted 9-10 and 2 days respectively (11, 13). In *Triticum* and in the mouse the premeiotic DNA replication has been estimated to take twice as long as the somatic replication (3, 17).

The significance of this extension is at present not clear. Somatic S phase duration is generally estimated from rapidly dividing cell populations and large scale variations have been observed to take place during ontogenesis (7, 11, 12, 13, 19). Likewise the different cell types in the root tip have been reported to have different S phase durations (15) and a gradual increase in S phase length has been described for the last spermatogonial cell cycles in the mouse (50).

Variation in S phase duration is caused primarily by a variation in the number of replicons activated and less by variations in the speed of replication fork movement (7, 11, 12, 19). The rate of replication fork movement may vary two- to threefold during S phase (34) but the average rate of fork movement for the entire S phase is identical for different tissues with varying durations of the DNA replication (7, 11, 12, 19). In agreement with this CALLAN obtained evidence for exceptionally long replicons and a normal rate of replication within the replicon in the premeiotic S phase of *Triturus* (11, 12).

The mechanism that determines how many replicons are activated is unknown. BLUMENTHAL et al. (7) suggested that comparatively fewer replicons were activated in the DNA of heterochromatin. This would extend the duration of the S phase in nuclei with large amounts of heterochromatin. This hypothesis has been questioned, however (19, 28, 78). Assuming a constant rate of replication for the replicon, the present results likewise suggest that the number of replicons is the same for the S_1 and S_2 period of the premeiotic S phase. The two phases are of equal duration with all of the heterochromatin being replicated in S_2 . Similar results have been obtained by LIMA-DE-FARIA and JAWORSKA (47), who noted a good correlation between relative DNA content and dura-

tion of replication of eu- and heterochromatin segments of *Secale* chromosomes. CALLAN (12) suggested that during the premeiotic DNA replication the chromomere could correspond to a replicon, and presented evidence for this from *Triturus*. If similar calculations are carried out on *Lilium longiflorum* assuming a rate of replication fork movement of 30 $\mu\text{m}/\text{hour}$ (72), the minimum number of replicons required to replicate the 60m of DNA (33) in *Lilium* would be 2500. (Duration of S_1 and S_2 : 40 hours, bidirectional replication rate of a replicon: 60 $\mu\text{m}/\text{hour}$.) BELLING (2) found 2000 chromomeres at pachytene in *Lilium pardalinum* and the number of chromomeres in *Lilium longiflorum* is probably within the same order of magnitude. A minimum of 12 replicons would thus be required to replicate the DNA of one chromomere. Evidence linking the state of chromatin as defined by light microscopy with the number of replicons activated is accordingly conflicting.

4.5 The heterochromatin of *Lilium longiflorum*

According to the present investigation 50-60 % of the premeiotic synthesis may be assigned to heterochromatin. This value agrees with the results of OONO and HOTTA (55) who found that two thirds of the DNA in the premeiotic nuclei was located in condensed chromatin. Moreover it can be stated from the volume determinations (sections 3.5, 3.7, Figures 7,9) that this chromatin fraction occurs in variable amounts in the synchronous premeiotic nuclei, the mean value being 2-3 times higher than in somatic nuclei.

Limited information is at present available on the fraction of the genome which participates in the formation of the chromocenters of premeiotic and somatic nuclei. The C banding experiments suggest that the C bands fit the definitions for constitutive heterochromatin (9, 22), since they remain condensed during interphase. This fraction however only accounts for 5 % of the genome (26). The results from the quinacrine mustard and orcein staining experiments are less clear cut since the intensity of fluorescence to some extent depends on the morphological preservation of the chromatin (26). If taken at face value the results

in Table IX indicate that both the Q bands and some interband regions may remain condensed during premeiotic interphase. The majority of the premeiotic heterochromatin can therefore not be classified as constitutive heterochromatin.

4.6 DNA replication, heterochromatin and meiosis

More information is required before detailed suggestions can be made as to the premeiotic control of the later events in meiosis. It is conceivable that the observed characteristics of the premeiotic S phase, i.e. extended duration, late replication of a quantitative variable fraction of the chromatin and the temporary arrest of DNA replication during the S₂ interval have influenced on the organization of the chromosomes, chromosome pairing and crossing-over.

It can be proposed that the longer replicons of the premeiotic S phase are a necessary prerequisite for the organization of the leptotene chromosome at a level below the chromomere. This process might also be influenced by the unique meiotic histone composition (60) and the possible uncoupling of DNA and histone synthesis (8, 66).

The 0.3 % of the DNA which remains unreplicated until zygotene (29, 32) and is of possible significance for chromosome pairing in *Lilium longiflorum* may relate to the arrest in the DNA replication at the S₂ interval. Likewise it can be visualized that the extended S phase would facilitate alterations in the organization of the chromatin housing early and late replicated DNA respectively, thereby making some of these regions inaccessible to entrapment within the synaptonemal complex. This proposal would be in line with the preselection hypothesis presented by STERN, WESTERGAARD and VON WETTSTEIN (65).

ACKNOWLEDGEMENTS

I am indebted to the late Professor MOGENS WESTERGAARD for suggesting this project and for his helpful guidance. I would also like to

thank Professor HERBERT STERN and Professor DITER VON WETTSTEIN for valuable discussions and comments on the manuscript. The staff of the phytotron at the Royal College of Forestry in Stockholm are thanked for their care of the plants. This work was supported in part by grant GM - 22051 of the National Institutes of Health, U.S. Public Health Service to Professor DITER VON WETTSTEIN.

REFERENCES

1. BARLOW, P. W.: The relation of the dispersion phase of chromocentric nuclei in the mitotic cycle to DNA synthesis. *Protoplasma* 90, 381-382 (1976)
2. BELLING, J.: The ultimate chromomeres of *Lilium* and *Aloe* with regard to the number of genes. *Univ. Calif. Pub. Bot.* 14, 307-318 (1928)
3. BENNETT, M. D. & J. B. SMITH: The effect of polyploidy on meiotic duration and pollen development in cereal anthers. *Proc. R. Soc. Lond. B.* 181, 81-107 (1972)
4. BENNETT, M. D., V. C. CHAPMAN & R. RILEY: The duration of meiosis in pollen mother cells of wheat, rye and Triticale. *Proc. R. Soc. Lond. B.* 178, 259-275 (1973)
5. BENNETT, M. D. & H. STERN: The time and duration of female meiosis in *Lilium*. *Proc. R. Soc. Lond. B.* 188, 459-475 (1975)
6. BENNETT, M. D. & H. STERN: The time and duration of preleptotene chromosome condensation stage in *Lilium* hybrid cv. *Black Beauty*. *Proc. R. Soc. Lond. B.* 188, 477-493 (1975)
7. BLUMENTHAL, A. B., H. J. KRIEGSTEIN & D. S. HOGNESS: The units of DNA replication in *Drosophila melanogaster* chromosomes. In: *Cold Spring Harbor Symp. Quant. Biol.* 38, 205-223 (1973)
8. BOGDANOV, YU. F., A. A. STROKOV & S. A. RESNIKOVA: Histone synthesis during meiotic prophase in *Lilium*. *Chromosoma (Berl.)*, 43, 237-396 (1974)
9. BROWN, S. W.: Heterochromatin. *Science* 151, 417-425 (1966)
10. BURNS, J. A.: Preleptotene chromosome contraction in *Nicotiana* species. *J. Hered.* 63, 175-178 (1972)
11. CALLAN, H. G.: Replication of the DNA in the

- chromosomes of eukaryotes. *Proc. Roy. Soc. Lond. B.* 181, 19-41 (1972)
12. CALLAN, H. G.: DNA replication in chromosomes of eukaryotes. In: *Cold Spring Harbor Symp. Quant. Biol.* 38, 195-204 (1973)
13. CALLAN, H. G. & J. H. TAYLOR: A radioautographic study of the time course of male meiosis in the newt *Triturus vulgaris*. *J. Cell Sci.* 3, 615-625 (1968)
14. CASPERSSON, T., L. ZECH, E. J. MODEST, G. E. FOLEY, U. WAGH & E. SIMONSON: Chemical differentiation with fluorescent alkylating agents in *Vicia faba* metaphase chromosomes. *Exp. Cell Res.* 58, 128-140 (1969)
15. CLOWES, F. A. L.: The duration of the G₁ phase of the mitotic cycle and its relation to radiosensitivity. *New Phytol.* 64, 355-359 (1965)
16. COMINGS, D. E.: The duration of replication of the inactive X chromosome in humans based on the persistence of the heterochromatic sex chromatin body during DNA synthesis. *Cytogenetics* 6, 20-37 (1967)
17. CRONE, M., E. LEVY & H. PETERS: The duration of premeiotic DNA synthesis in mouse. *Exp. Cell Res.* 39, 678-688 (1965)
18. DE, D. N.: Autoradiographic studies of nucleoprotein metabolism during the division cycle. *The Nucleus* 4, 1-24 (1961)
19. EDENBERG, H. J. & J. A. HUBERMAN: Eukaryotic chromosome replication. *Ann. Rev. Genet.* 9, 245-284 (1975)
20. ERICKSON, R. O.: Cytological and growth correlation in the flower bud and anther development of *Lilium longiflorum*. *Amer. J. Bot.* 35, 729-739 (1948)
21. FOX, D. P., G. M. HEWITT & D. L. HALL: DNA replication and RNA transcription of euchromatic and heterochromatic chromosome regions during grasshopper meiosis. *Chromosoma (Berl.)* 45, 43-62 (1974)
22. HEITZ, E.: Das Heterochromatin der Moose. *Jahrb. f. wiss. Bot.* 69, 762-818 (1928)
23. HEITZ, E.: Heterochromatin, Chromocentren, Chromomeren. *Ber. dtsh. bot. Ges.* 47, 276-284 (1929)
24. HENDERSON, S. A.: The time and place of meiotic crossing over. *Ann. Rev. Genet.* 4, 295-324 (1970)
25. HIRAOKA, T.: Studies of mitosis and meiosis in comparison. III. Behaviour of chromonemata in the pre-leptotene state in meiosis. *Cytologia (Tokyo)* 11, 473-482 (1941)
26. HOLM, P. B.: The C and Q banding patterns of the chromosomes of *Lilium longiflorum* (Thunb.). *Carlsberg Res. Commun.* 41, 217-224 (1976)
27. HOLM, P. B.: Three-dimensional reconstruction of chromosome pairing during the zygotene stage of meiosis in *Lilium longiflorum* (Thunb.). *Carlsberg Res. Commun.* 42, 103-151 (1977)
28. HORI, T. A. & K. G. LARK: Autoradiographic studies of the replication of satellite DNA in the kangaroo rat. *Autoradiographs of satellite DNA. J. Mol. Biol.* 88, 221-232 (1974)
29. HOTTA, Y., M. ITO & H. STERN: Synthesis of DNA during meiosis. *Proc. Nat. Acad. Sci.* 56, 1184-1191 (1966)
30. HOTTA, Y. & H. STERN: Transient phosphorylation of deoxyribosides and regulation of deoxyribonucleic acid synthesis. *J. Biophys. Biochem. Cytol.* 11, 311-319 (1961)
31. HOTTA, Y. & H. STERN: Inhibition of protein synthesis during meiosis and its bearing on intracellular regulation. *J. Cell Biol.* 16, 259-279 (1963)
32. HOTTA, Y. & H. STERN: Analysis of DNA synthesis during meiotic prophase in *Lilium*. *J. Mol. Biol.* 55, 337-355 (1971)
33. HOTTA, Y. & H. STERN: Zygotene and pachytene-labelled sequences in the meiotic organization of chromosomes. In: "The Eucaryotic Chromosome", W. S. Peacock & R. D. Brock, eds., *Austral. Nat. Univ. Press, Canberra* pp. 283-305 (1975)
34. HOUSMAN, D. & J. A. HUBERMAN: Changes in the rate of DNA replication fork movement during S phase in mammalian cells. *J. Mol. Biol.* 94, 173-181 (1975)
35. HOWARD, A. & D. L. DEWEY: Non-uniformity of labelling rate during DNA synthesis. *Exp. Cell Res.* 24, 623-624 (1961)
36. HYDE, B. B.: Differentiated chromosomes in *Plantago ovata*. *Amer. J. Bot.* 40, 809-815 (1953)
37. ITO, M. & Y. HOTTA: Radioautography of incorporated ³H-thymidine and its metabolism during meiotic prophase in microsporocytes of *Lilium*. *Chromosoma (Berl.)* 43, 391-398 (1973)
38. ITO, M. & H. STERN: Studies of meiosis in vitro I. In vitro culture of meiotic cells. *Devel. Biol.* 6, 36-53 (1967)
39. KOFMAN ALFARO, S. & A. C. CHANDLEY: Meiosis in the male mouse. An autoradiographic investigation. *Chromosoma (Berl.)* 31, 404-420 (1970)
40. KONGSUWAN, K. & D. R. SMYTH: Q-bands in *Lilium* and their relationship to C-banded heterochromatin. *Chromosoma (Berl.)* 60, 169-178 (1977)
41. KUROIWA, T.: Fine structure of interphase nuclei III. Replication site analysis of DNA during the S period of *Crepis capillaris*. *Exp. Cell Res.* 83, 387-398 (1974)

42. LAFONTAINE, J. G. & A. LORD: An ultrastructural and autoradiographic study of the evolution of the interphase nucleus in plant meristematic cells (*Allium porrum*). *J. Cell Sci.* 14, 263-287 (1974)
43. LIMA-DE-FARIA, A.: Differential uptake of tritiated thymidine into hetero- and euchromatin in *Melanoplus* and *Secale*. *J. Biophys. Biochem. Cytol.* 6, 457-466 (1959)
44. LIMA-DE-FARIA, A.: Labelling of the cytoplasm and the meiotic chromosomes of *Agapanthus* with ³H-thymidine. *Hereditas* 53, 1-18 (1965)
45. LIMA-DE-FARIA, A.: DNA replication and gene amplification in heterochromatin. In: "Handbook of Molecular Cytology", Lima-de-Faria, A., ed., North Holland Publishing Co., Amsterdam and London, pp. 277-325 (1969)
46. LIMA-DE-FARIA, A. & K. BORUM: The period of DNA synthesis prior to meiosis in the mouse. *J. Cell Biol.* 14, 381-389 (1962)
47. LIMA-DE-FARIA, A. & H. JAWORSKA: The relation between the chromosome size gradient and the sequence of DNA replication in rye. *Hereditas* 70, 39-58 (1972)
48. LORD, A. & J. G. LAFONTAINE: An ultrastructural and radioautographic study of the evolution of the interphase nucleus in plant meristematic cells (*Raphanus sativus*). *J. Cell Sci.* 21, 193-207 (1976)
49. MARQUARDT, H.: Die Meiosis von *Oenothera l.* *Z. Zellforsch.* 27, 190-210 (1937)
50. MONESI, V.: Autoradiographic study of DNA synthesis and the cell cycle in spermatogonia and spermatocytes of mouse testis using tritiated thymidine. *J. Cell Biol.* 14, 1-18 (1962)
51. MORISHIMA, A., M. M. GRUMBACH & J. H. TAYLOR: Asynchronous duplication of human chromosomes and the origin of sex chromatin. *Proc. Nat. Acad. Sci.* 48, 756-763 (1962)
52. MOSES, M. J. & J. H. TAYLOR: Desoxypentose nucleic acid during microsporogenesis in *Tradescantia*. *Exp. Cell Res.* 9, 474-488 (1955)
53. NAGL, W.: The mitotic and endomitotic nuclear cycle in *Allium carinatum* II. Relations between DNA replication and chromatin structure. *Caryologia* 23, 71-78 (1970)
54. NINNEMANN, H. & B. EPEL: Inhibition of cell division by blue light. *Exp. Cell Res.* 79, 318-326 (1973)
55. OONO, K. & Y. HOTTA: The relation of chromosome compaction to DNA synthesis during meiosis in *Lilium*. *Cell Structure and Function* 4, 1-9 (1976)
56. QUASTLER, H. & F. G. SHERMAN: Cell population kinetics in the intestinal epithelium of the mouse. *Exp. Cell Res.* 17, 420-438 (1959)
57. RASMUSSEN, S. W.: The meiotic prophase in *Bombyx mori* females analyzed by three dimensional reconstructions of synaptonemal complexes. *Chromosoma (Berl.)* 54, 245-293 (1976)
58. ROSSEN, J. M. & M. WESTERGAARD: Studies on the mechanism of crossing over II. Meiosis and the time of meiotic chromosome replication in the ascomycete *Neottiella rutilans* (Fr.) Dennis. *Compt. Rend. Trav. Lab. Carlsberg* 35/9, 233-260 (1966)
59. ROTH, I. F. & M. ITO: DNA dependent formation of the synaptonemal complex. *J. Cell Biol.* 35, 247-255 (1967)
60. SHERIDAN, W. F. & H. STERN: Histones of meiosis. *Exp. Cell Res.* 45, 325-335 (1967)
61. SPERLING, K. & P. N. RAO: Mammalian cell fusion V. Replication behaviour of heterochromatin as observed by premature chromosome condensation. *Chromosoma (Berl.)* 45, 121-131 (1974)
62. SPURR, A. R.: A low-viscosity epoxy resin embedding medium for electron microscopy. *J. Ultrastruc. Res.* 26, 31-43 (1969)
63. STERN, H. & Y. HOTTA: DNA synthesis in relation to chromosome pairing and chiasma formation. *Genetics* 61, Suppl. 1, 27-39 (1969)
64. STERN, H. & Y. HOTTA: Biochemical controls of meiosis. *Ann. Rev. Genet.* 7, 37-66 (1973)
65. STERN, H., M. WESTERGAARD & D. VON WETTSTEIN: Presynaptic events in meiocytes of *Lilium longiflorum* and their relation to crossing-over: A preselection hypothesis. *Proc. Nat. Acad. Sci.* 72, 961-965 (1975)
66. STROKOV, A. A. YU, F. BOGDANOV & S. A. RESNIKOVA: A quantitative study of histone of meiocytes II. Polyacrylamide gel electrophoresis of isolated histones from *Lilium microsporocytes*. *Chromosoma (Berl.)* 43, 247-260 (1973)
67. STUBBLEFIELD, E.: The kinetics of DNA replication in chromosomes. In: "The Cell Nucleus II.", Busch, H., ed., Academic Press, New York and London, pp. 149-162 (1974)
68. STUBBLEFIELD, E. & M. GAY: Quantitative tritium autoradiography of mammalian chromosomes II. The kinetics of DNA synthesis in individual chromosomes of chinese hamster fibroblasts. *Chromosoma (Berl.)* 31, 79-90 (1970)
69. SUMNER, A. T.: A simple technique for demonstrating centromeric heterochromatin. *Exp. Cell Res.* 75, 304-306 (1972)
70. TAKATS, S. T. & R. M. S. SMELLIE: Thymidine degradation products in plant tissue labelled with tritiated thymidine. *J. Cell Biol.* 17, 59-66 (1965)
71. TAYLOR, J. H. & R. MCMASTER: Autoradiograph

- hic and microphotometric studies of desoxyribose nucleic acid during microgametogenesis in *Lilium longiflorum*. *Chromosoma (Berl.)* 6, 489-521 (1954)
72. VAN'T HOF, J.: Replicon size and rate of fork movement in early S of higher plant cells (*Pisum sativum*). *Exp. Cell Res.* 103, 395-403 (1976)
 73. VOSA, C. G. & R. MARCHI: Quinacrine fluorescence and Giemsa staining in plants. *Nature New Biol.* 237, 191-192 (1972)
 74. WALTERS, M. S.: Evidence on the time of chromosome pairing from the preleptotene spiral stage in *Lilium longiflorum* "Croft". *Chromosoma (Berl.)* 29, 375-418 (1970)
 75. WALTERS, M. S.: The relation of temperature to preleptotene chromosome contraction in *Lilium*. *Chromosoma (Berl.)* 61, 23-39 (1977)
 76. WESTERGAARD, M. & D. VON WETTSTEIN: Studies on the mechanism of crossing-over IV. The molecular organization of the synaptonemal complex in *Neottiella* (Cooke) Saccardo (Ascomycetes). *Compt. Rend. Trav. Lab. Carlsberg* 37, 239-268 (1970)
 77. WESTERGAARD, M. & D. VON WETTSTEIN: The synaptonemal complex. *Ann. Rev. Genet.* 6, 71-110 (1972)
 78. ZAKIAN, V. A.: Electron microscopic analysis of DNA replication in main band and satellite DNAs of *Drosophila virilis*. *J. Mol. Biol.* 108, 305-331 (1976)